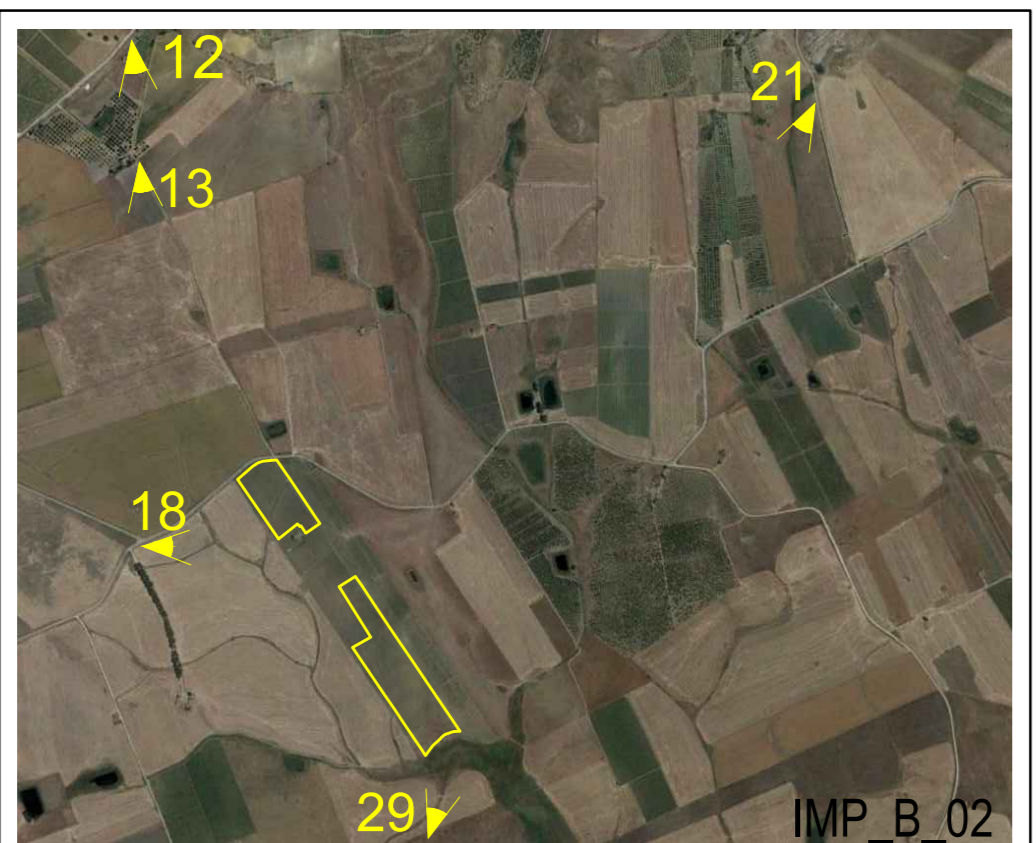
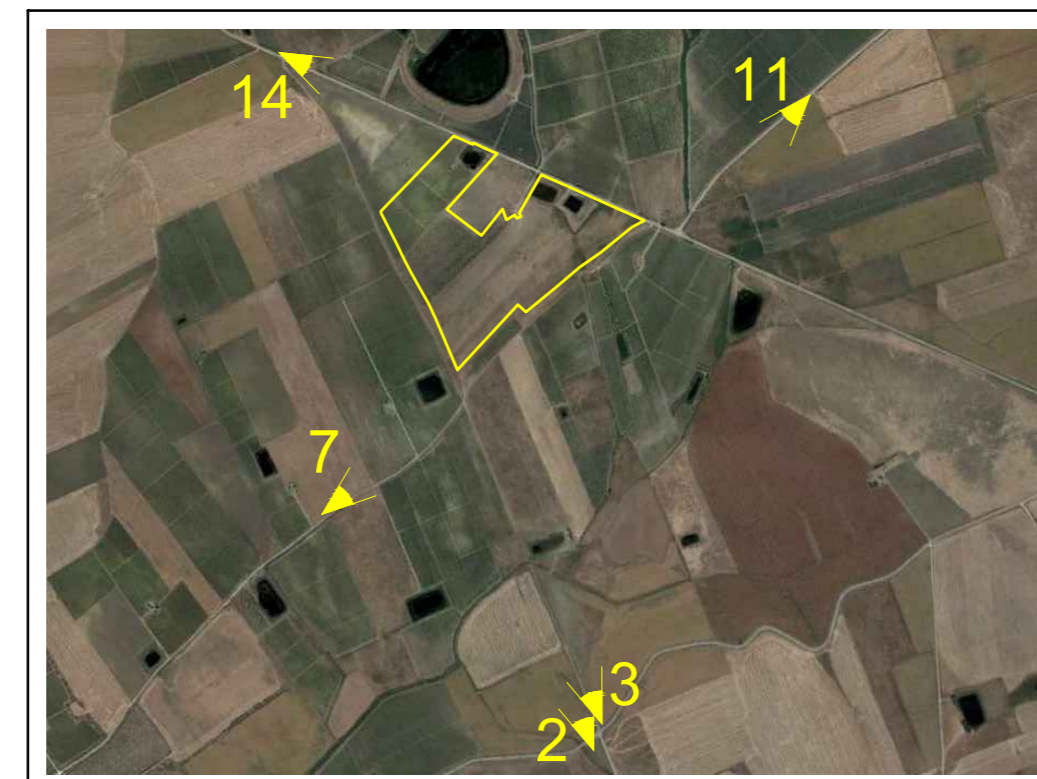


IMP\_B\_01



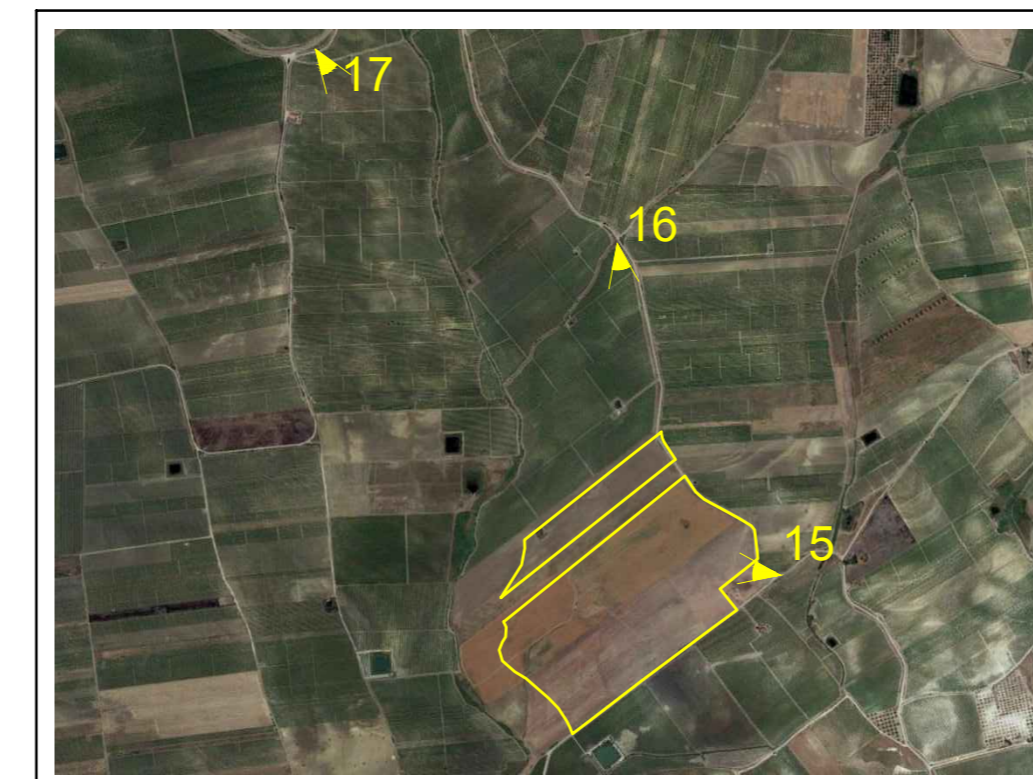
IMP\_B\_02



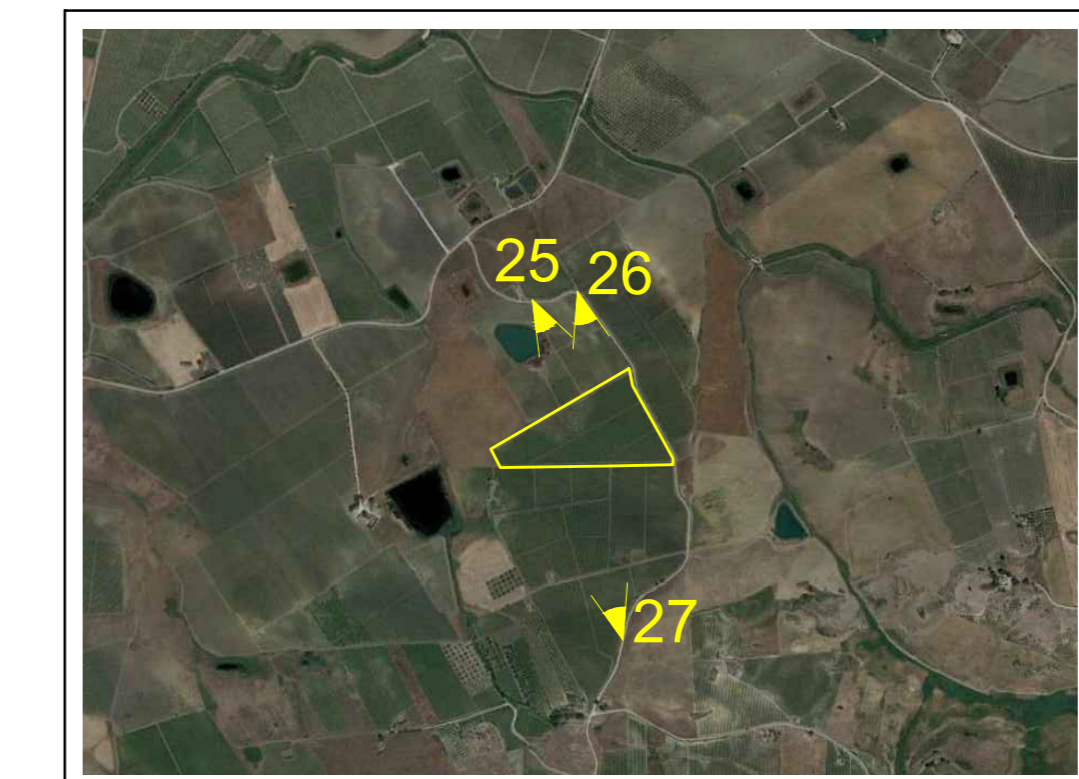
IMP\_B\_03



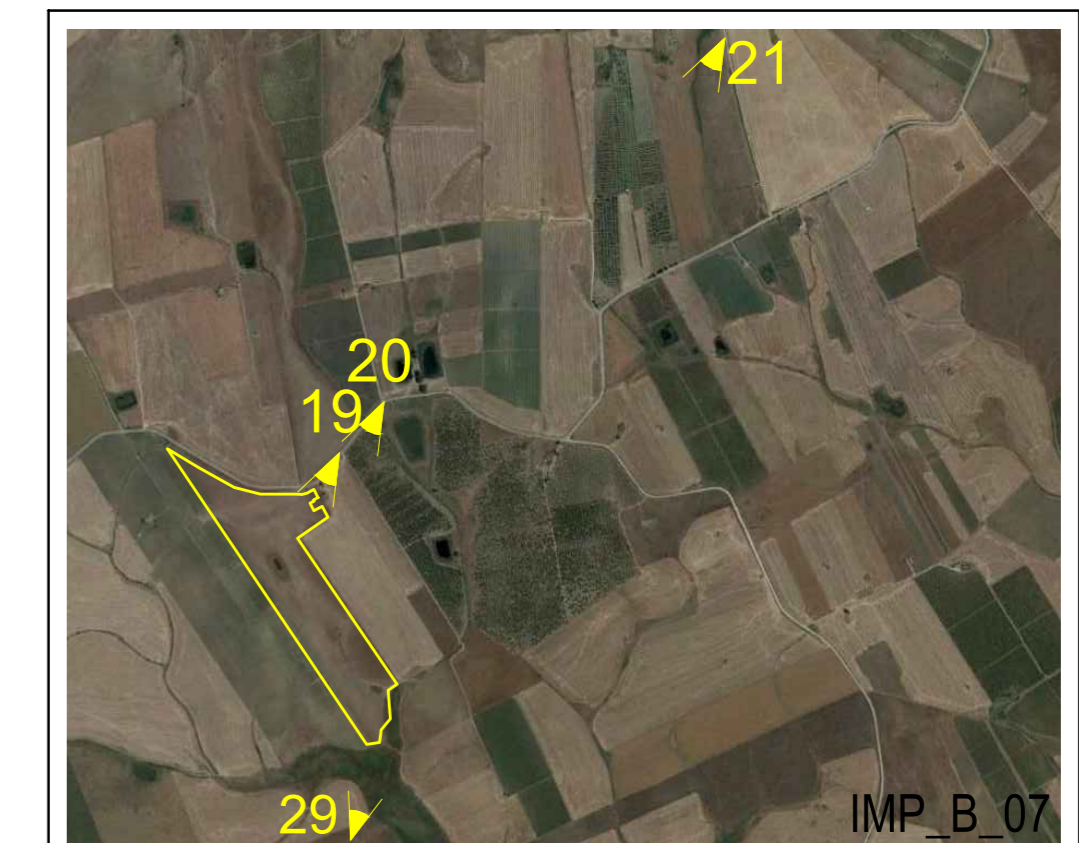
IMP\_B\_04



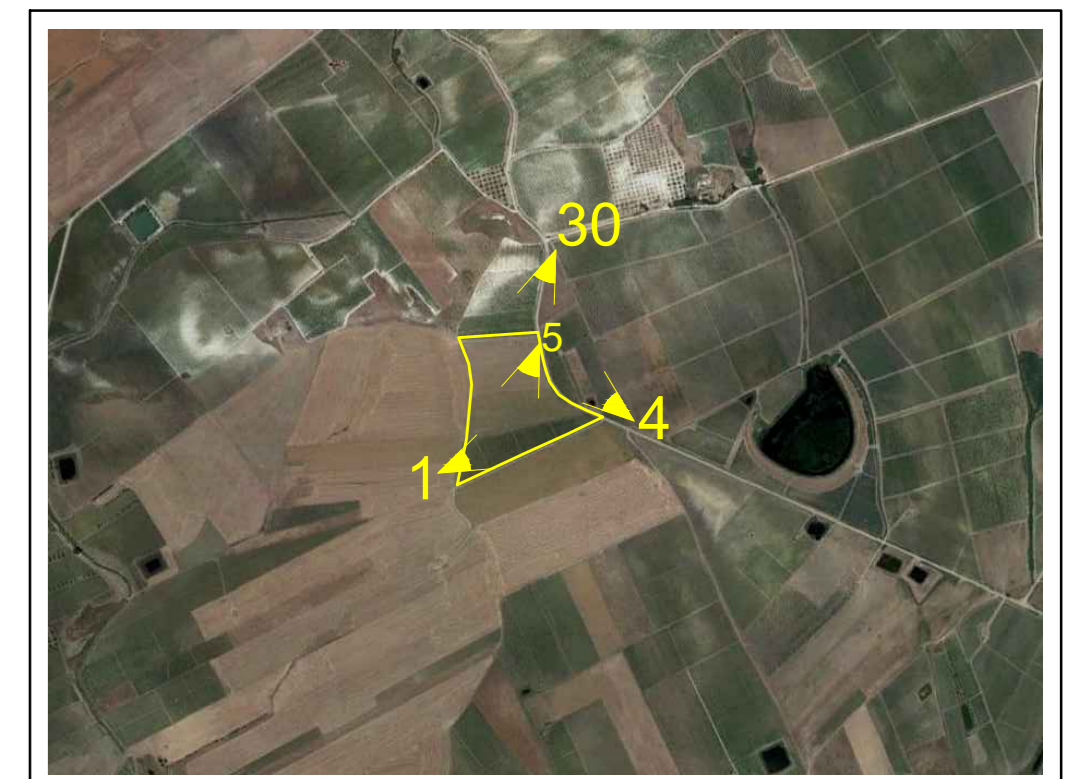
IMP\_B\_05



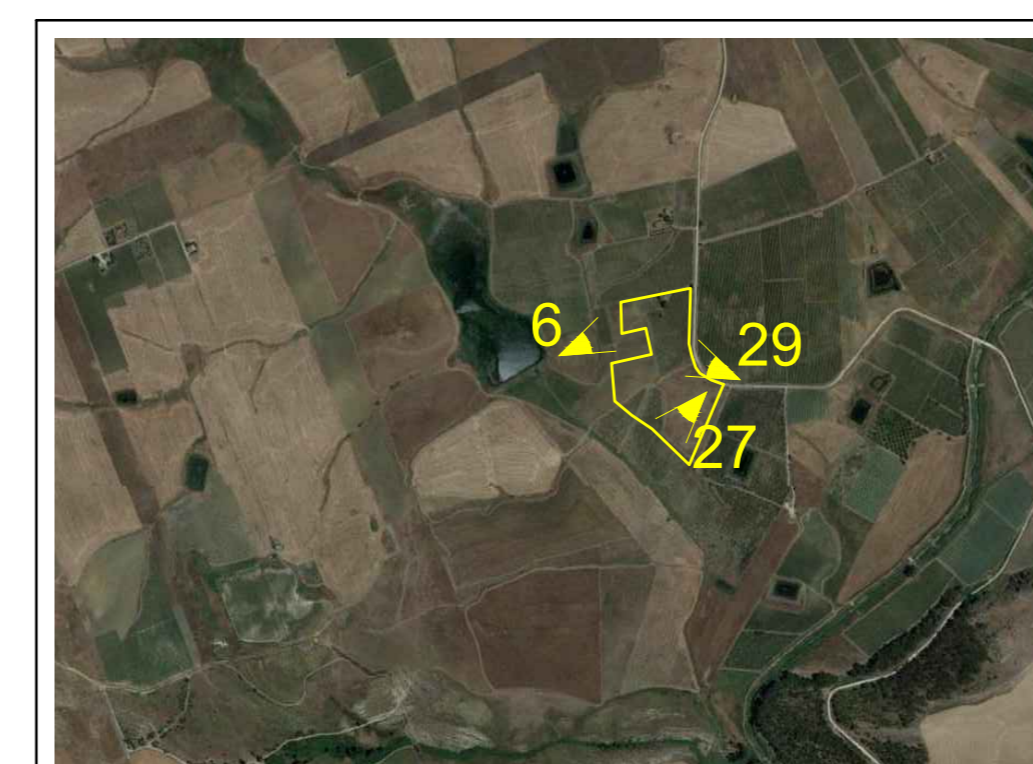
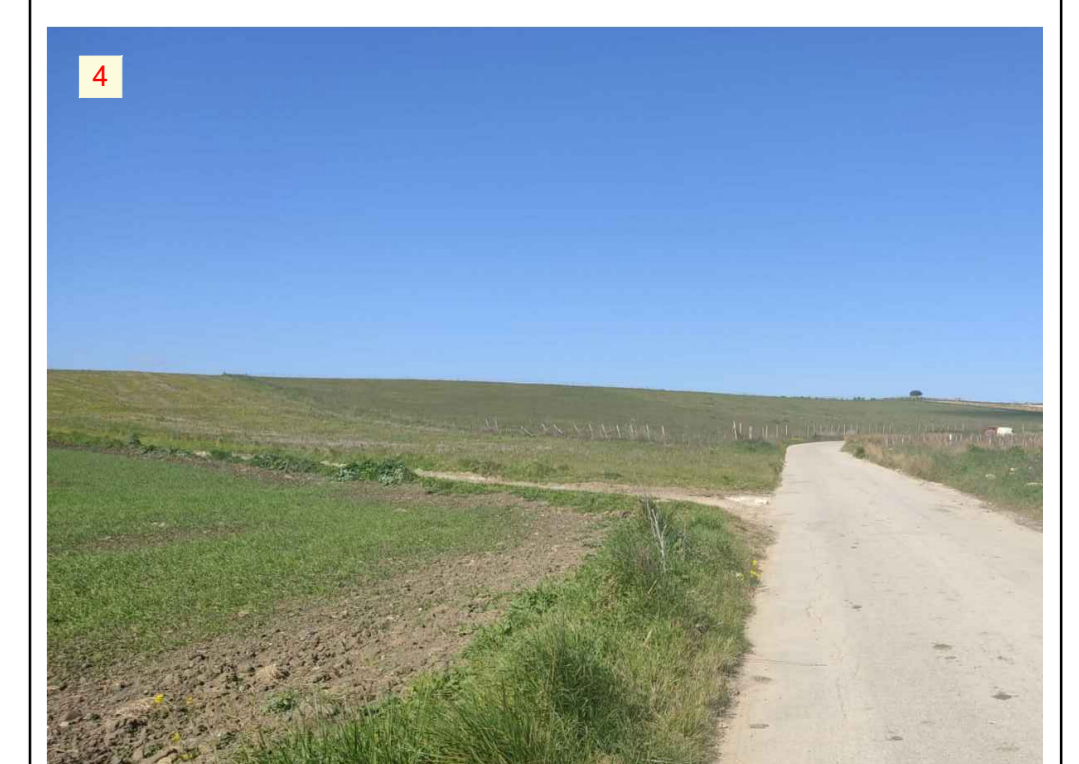
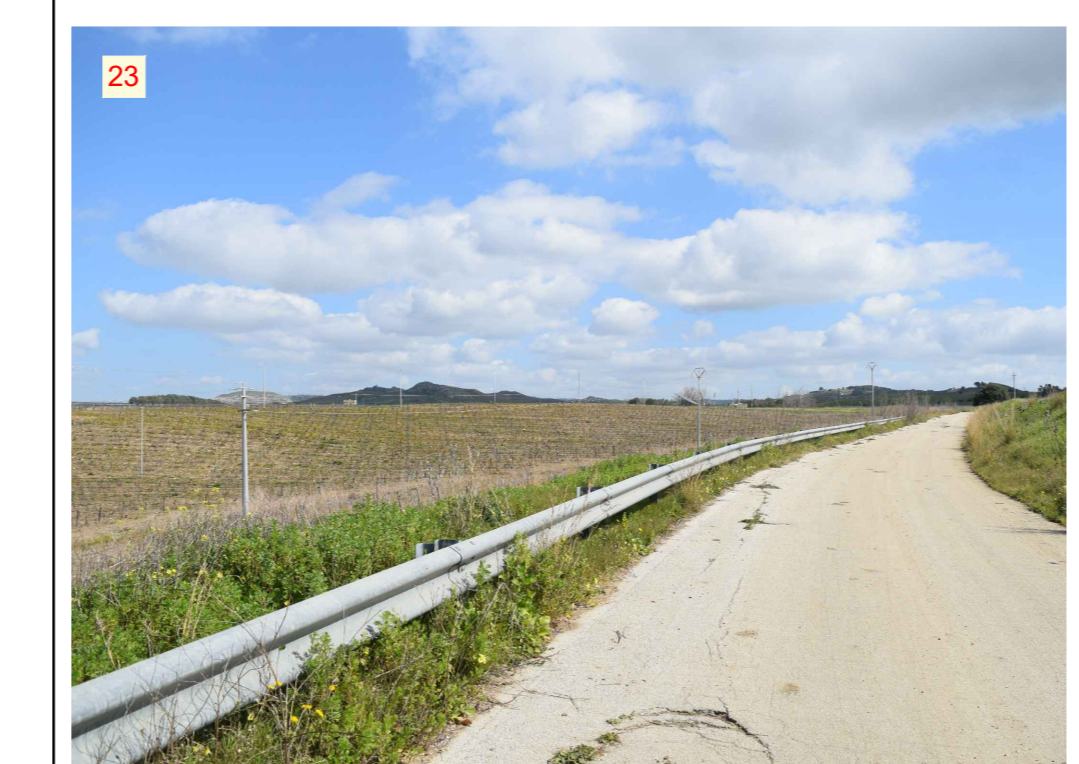
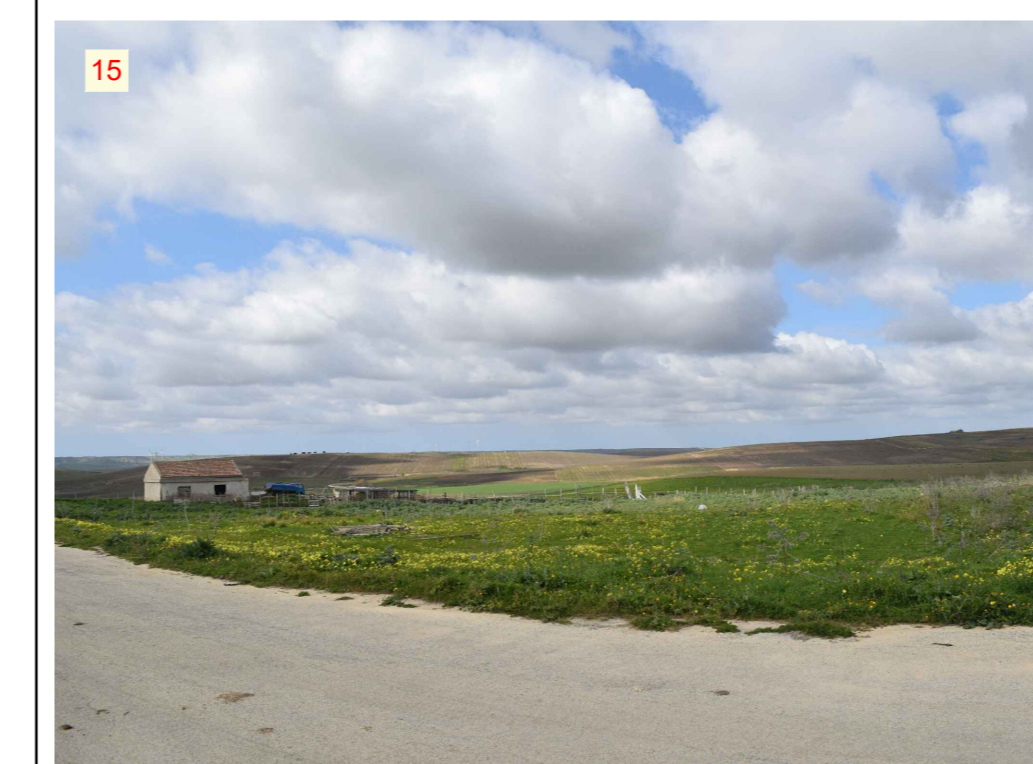
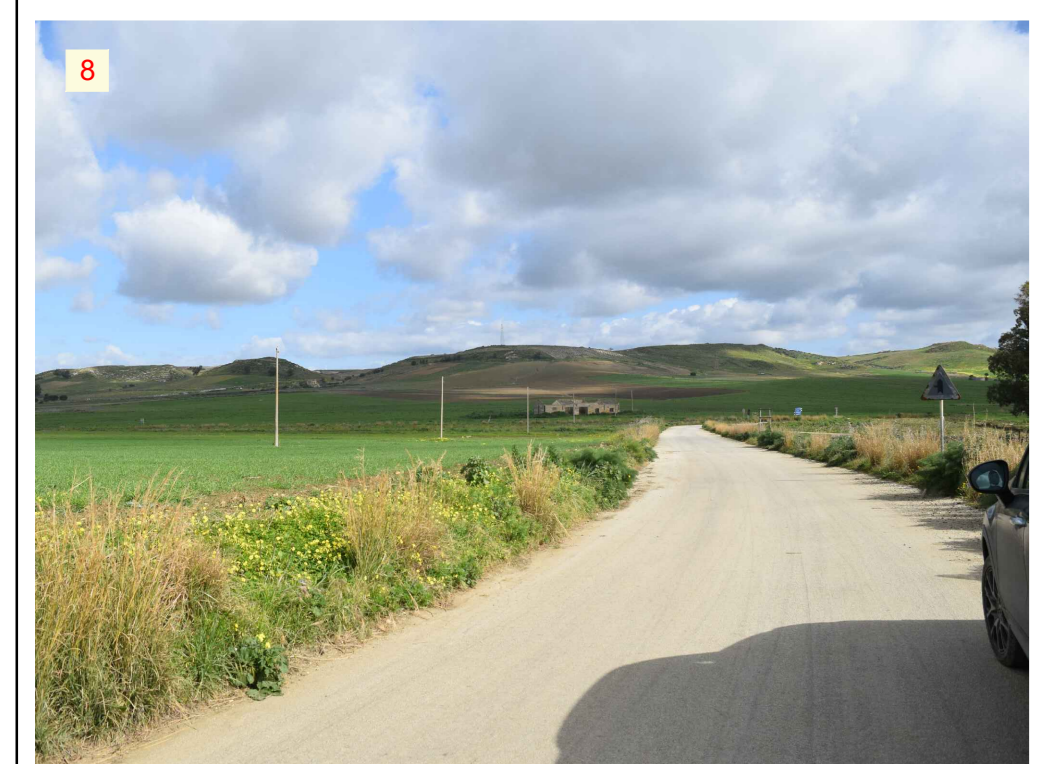
IMP\_B\_06



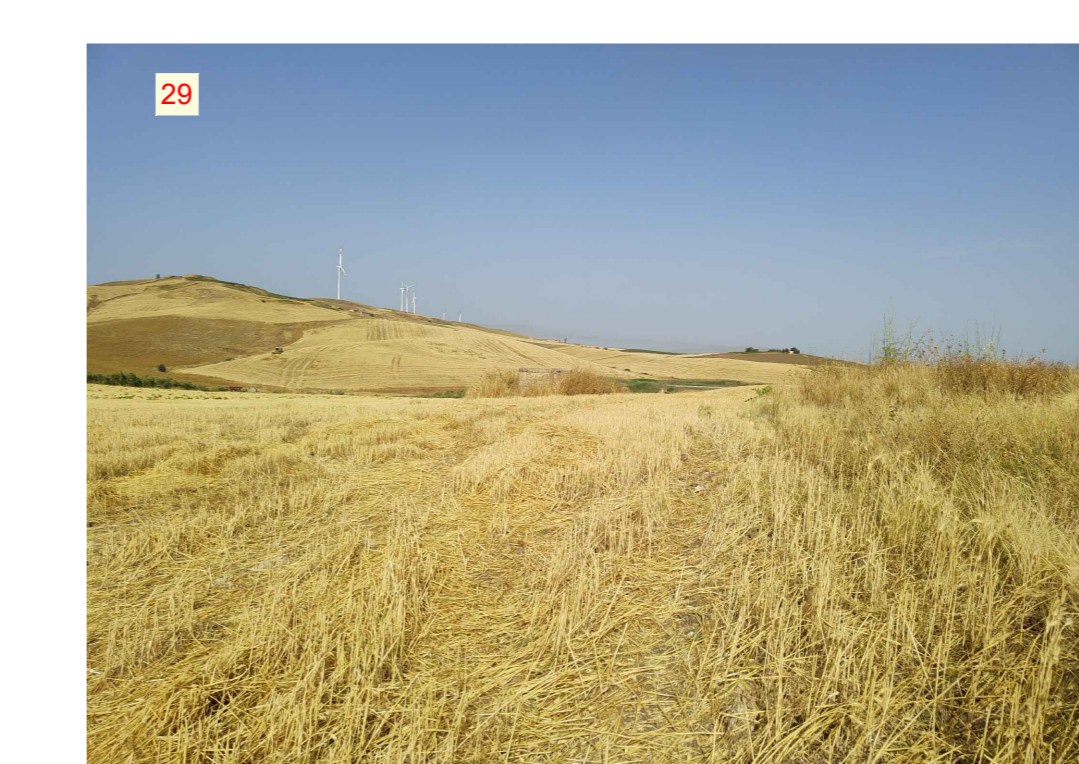
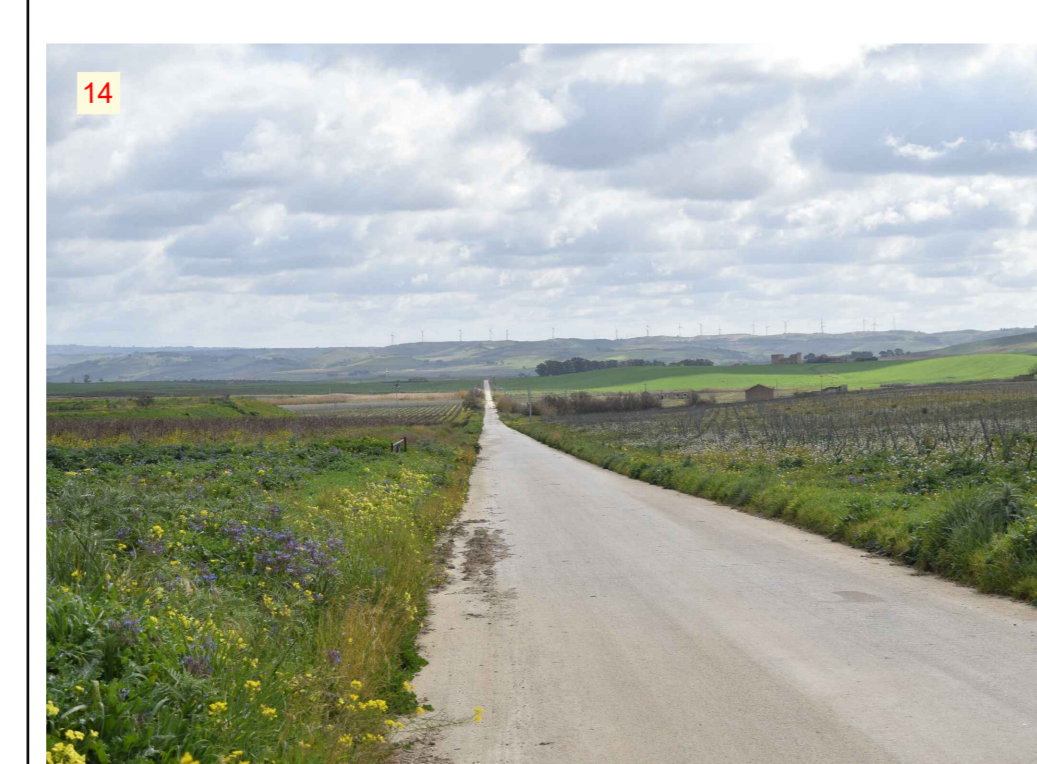
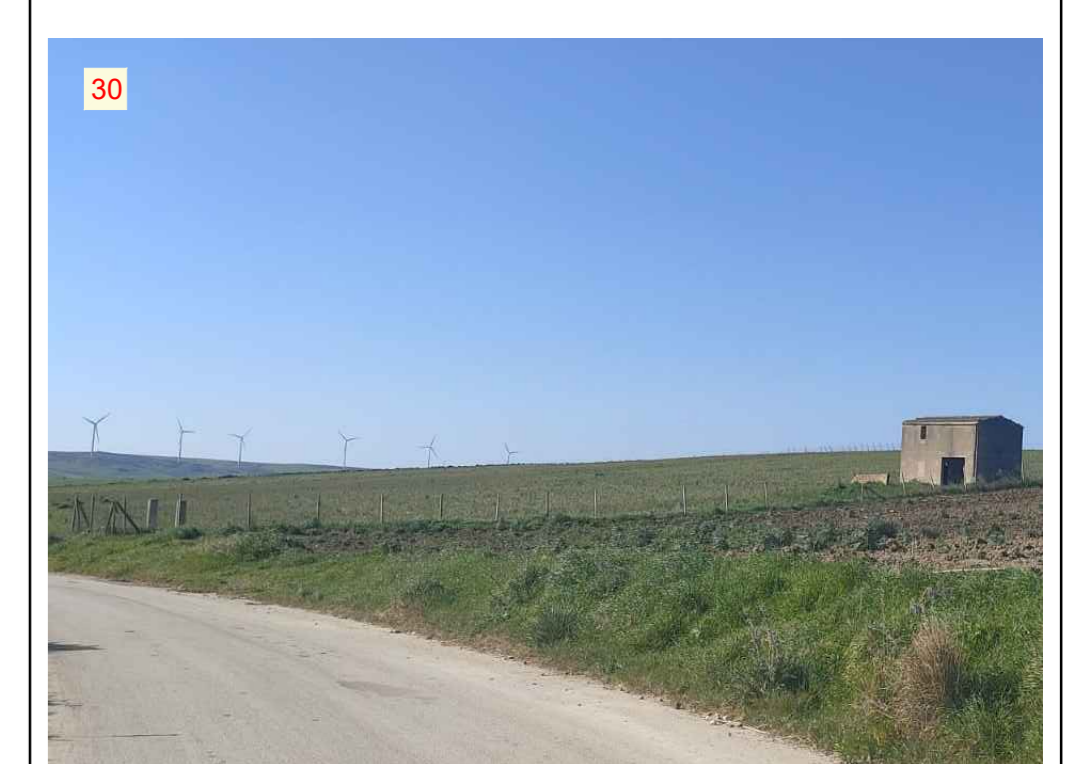
IMP\_B\_07



IMP\_B\_08



IMP\_B\_09



REGIONE SICILIA  
 COMUNI DI SALEM, MAZARA DEL VALLO,  
 SANTA NINFA E CASTELVETRANO  
 IN PROVINCIA DI TRAPANI

PROGETTO DI UN IMPIANTO AGROVOLTAICO E OPERE CONNESSE DA REALIZZARSI IN PROVINCIA DI TRAPANI NEI COMUNI DI SALEM, MAZARA DEL VALLO, SANTA NINFA E CASTELVETRANO, DENOMINATO "CLUSTER B"

PROGETTO DEFINITIVO  
 ELABORATO RILIEVO FOTOGRAFICO STATO DI FATTO

SCALA -  
 CODICE ELABORATO  
 CLBPD010-00

PROPRIONTE  
 absolute energy sicilia  
 Absolute Energy Sicilia S.R.L. - Via Virgilio Orsini, 19 - 00192 Roma

PROGETTAZIONE: Ing. Francesco Lionello  
 EolPower  
 EolPower Investments srl - Via G. Carducci, 29 - 80121 Napoli (NA) Tel. 0814243089

VERIFICA  
 Ing. Lionello  
 Ing. Lionello

20	20/06/2022	EMMISSIONE PER PROGETTO DEFINITIVO	F. LIONELLO	ABSOLUTE ENERGY SICILIA S.R.L.	ABSOLUTE ENERGY SICILIA S.R.L.
		DESCRIZIONE REVISIONE	REDAATTO	VERIFICATO	APPROVATO