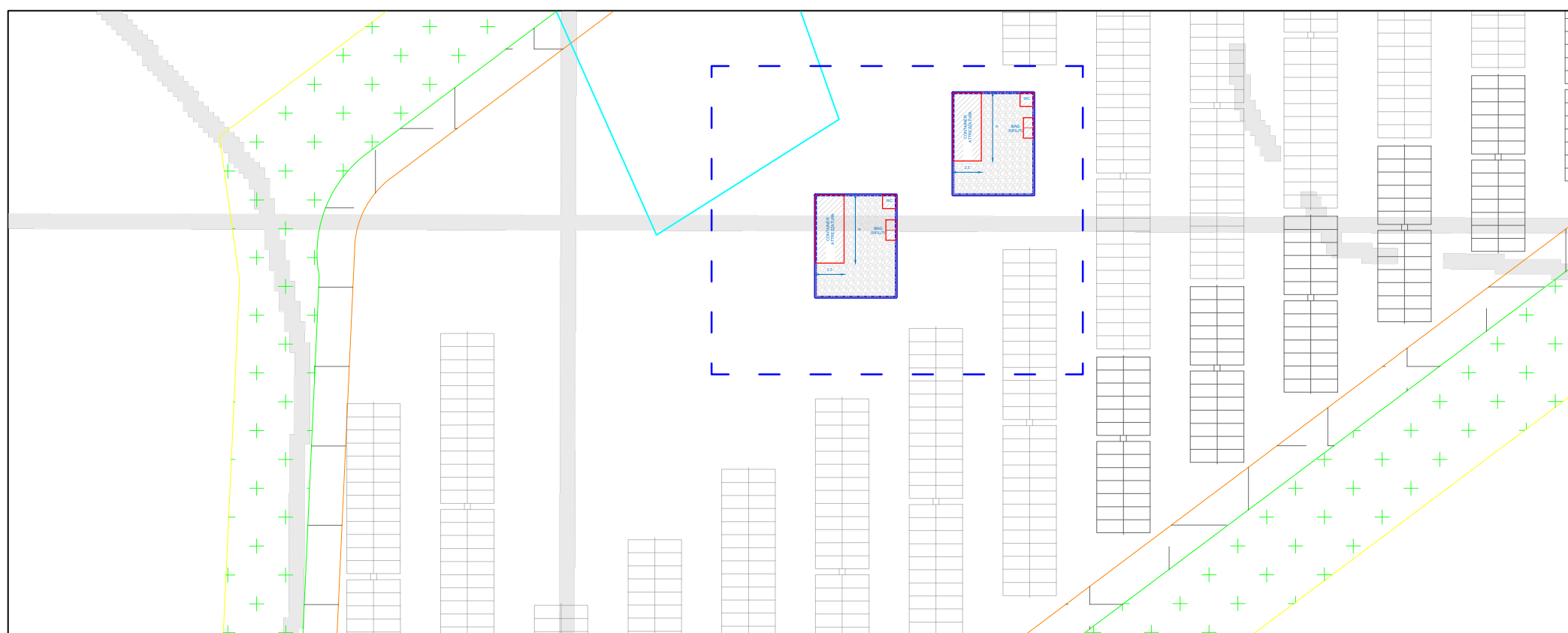
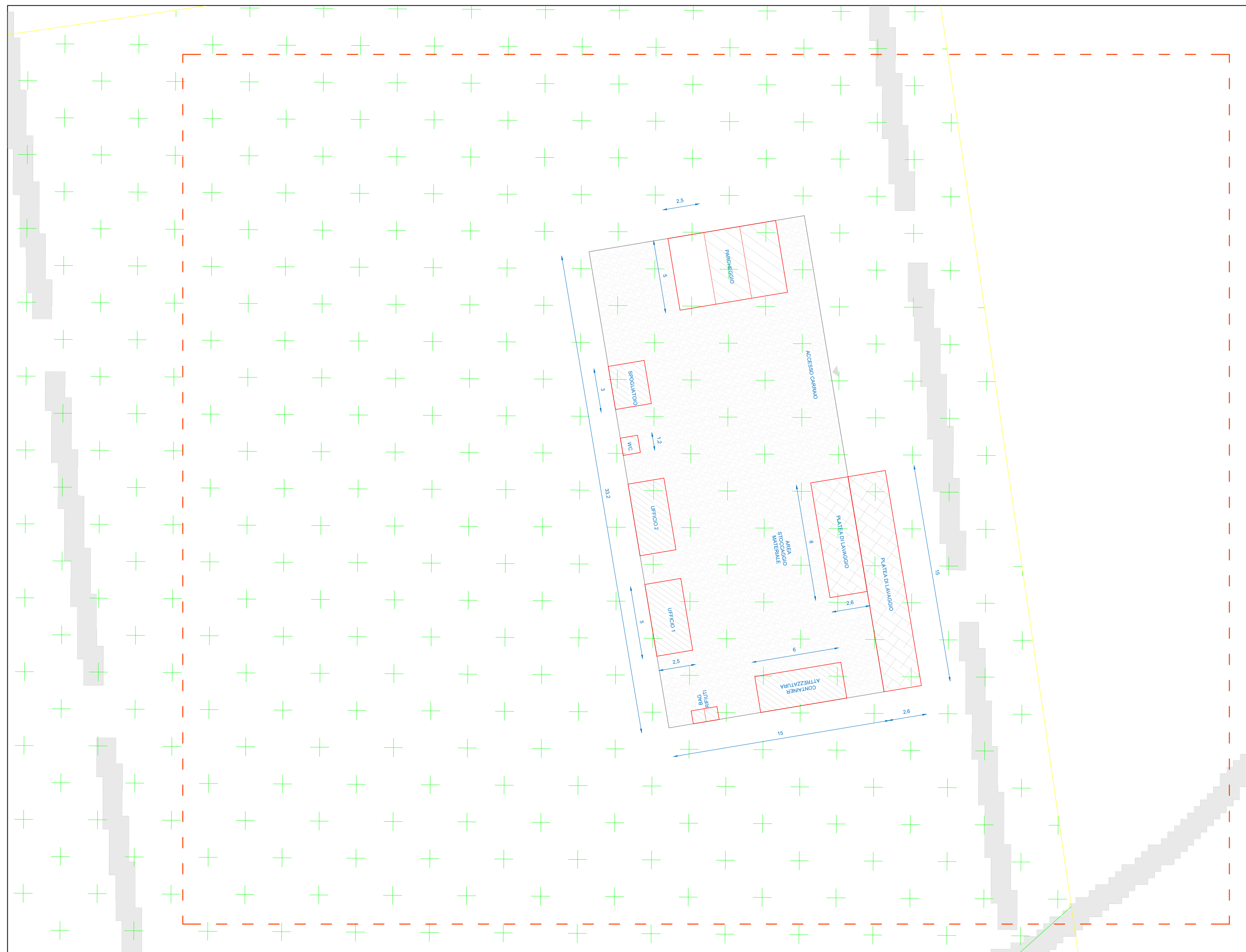


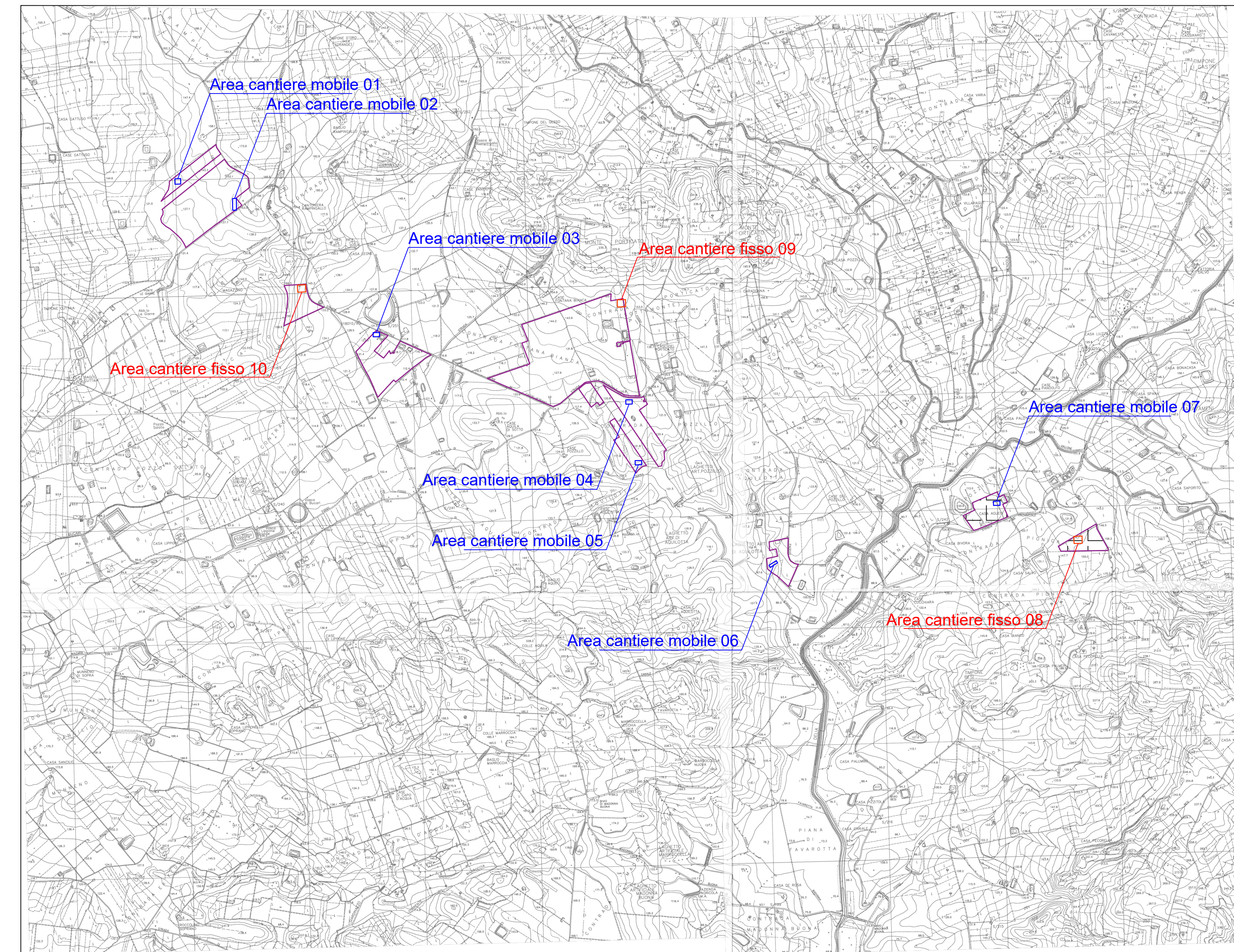
AREA CANTIERE MOBILE 01 - scala 1: 500



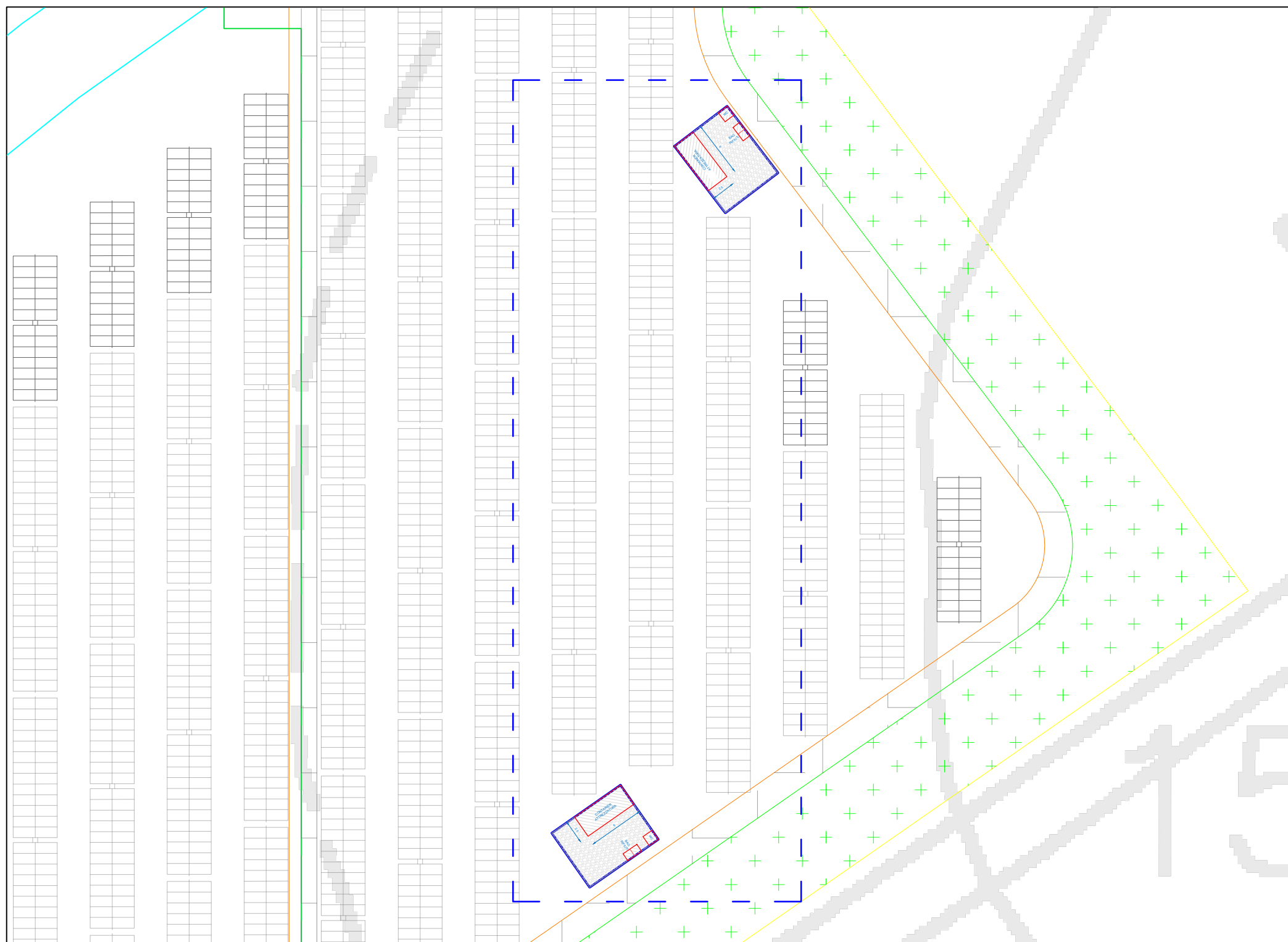
AREA CANTIERE FISSO 09 - scala 1: 200



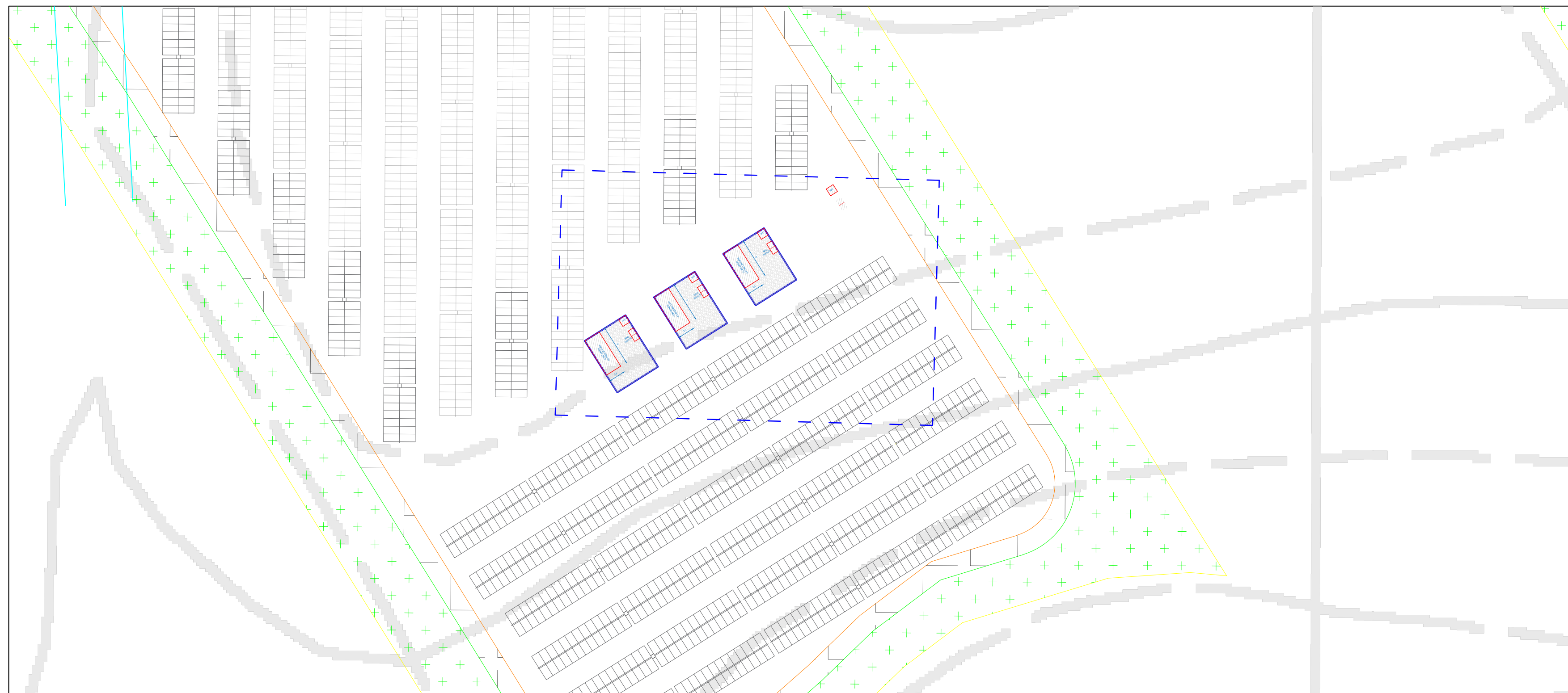
INQUADRAMENTO GENERALE SU CTR - scala 1: 25.000



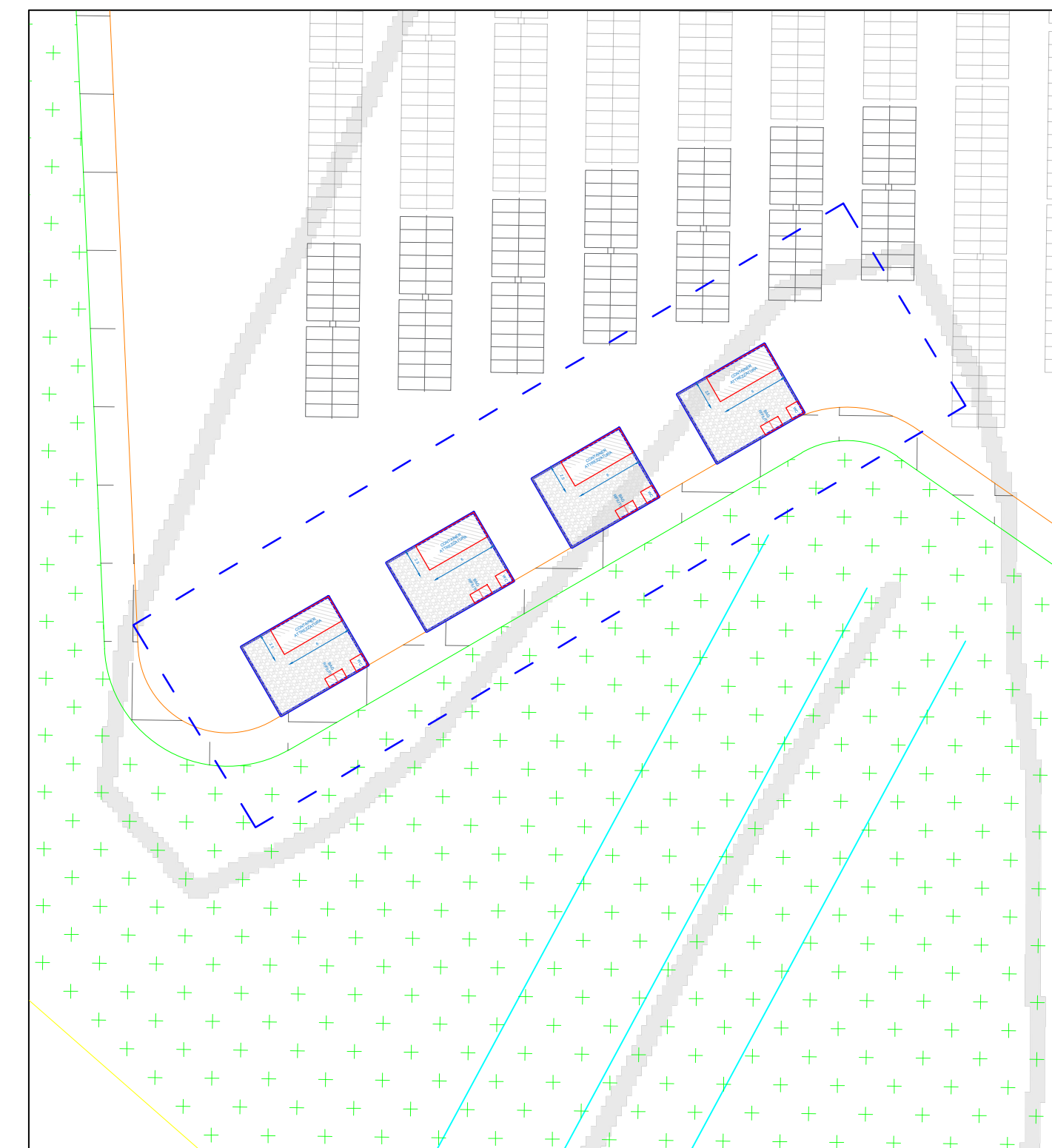
AREA CANTIERE MOBILE 02 - scala 1: 500



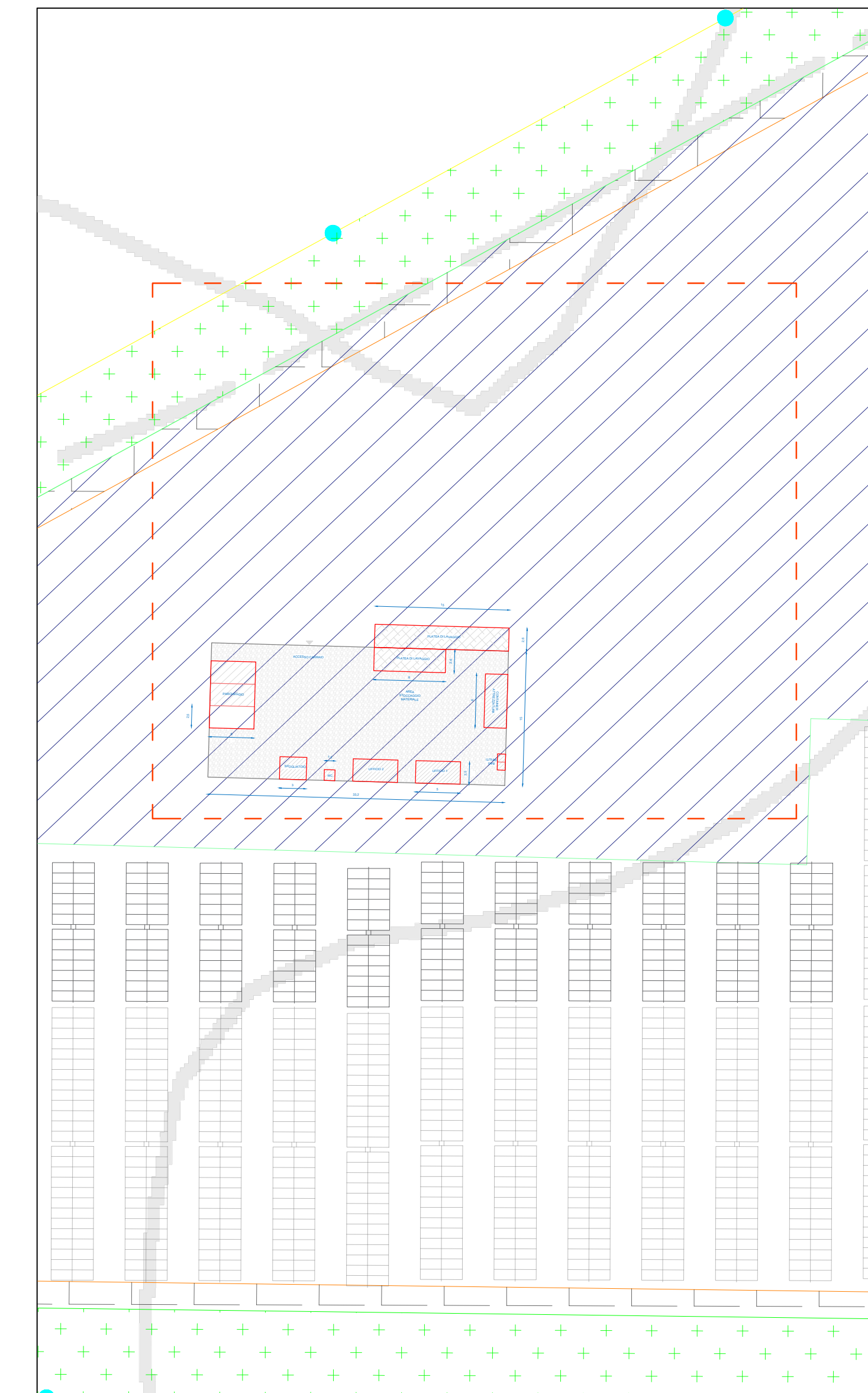
AREA CANTIERE MOBILE 05 - scala 1:500



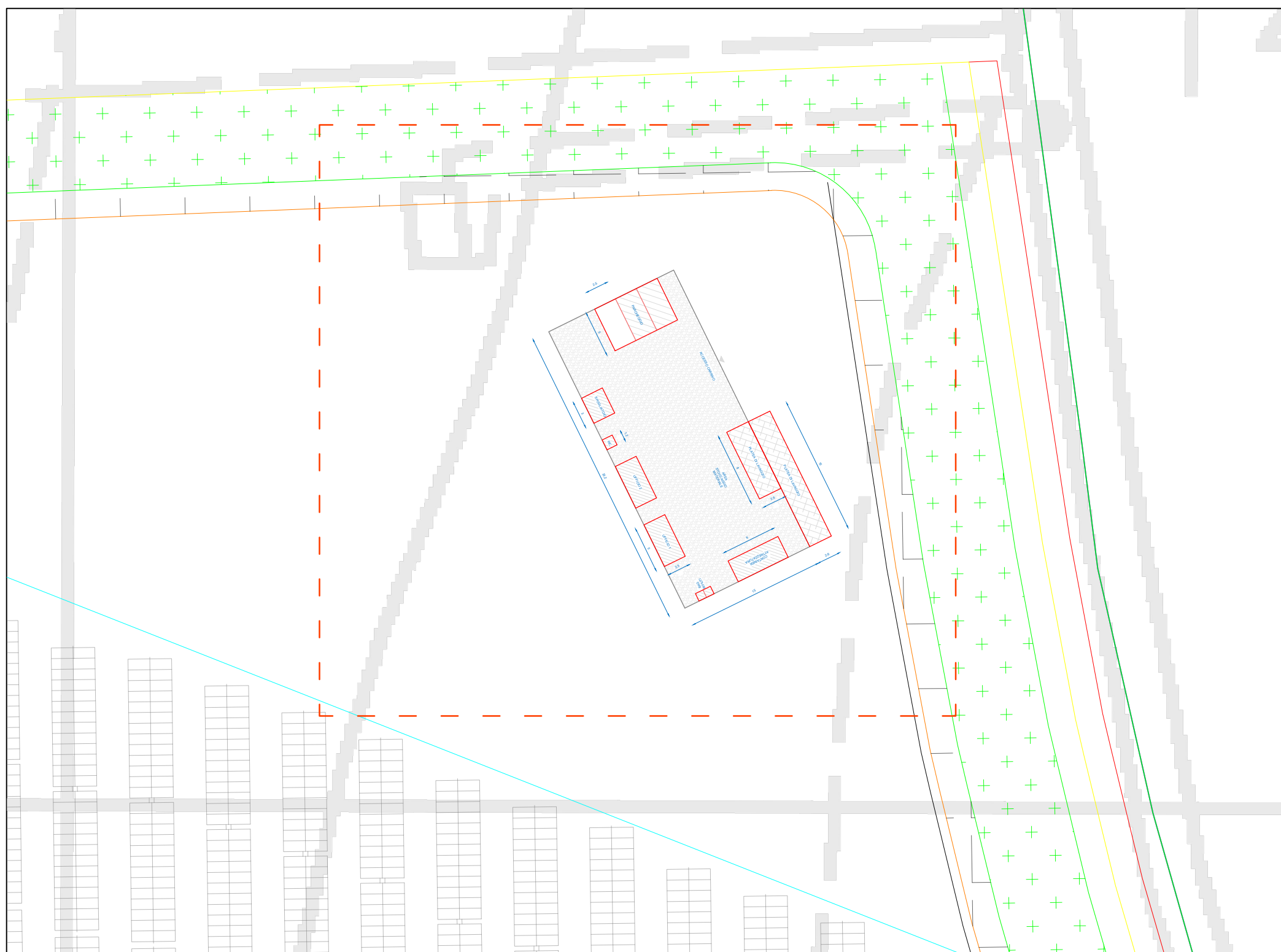
AREA CANTIERE MOBILE 06 - scala 1: 500



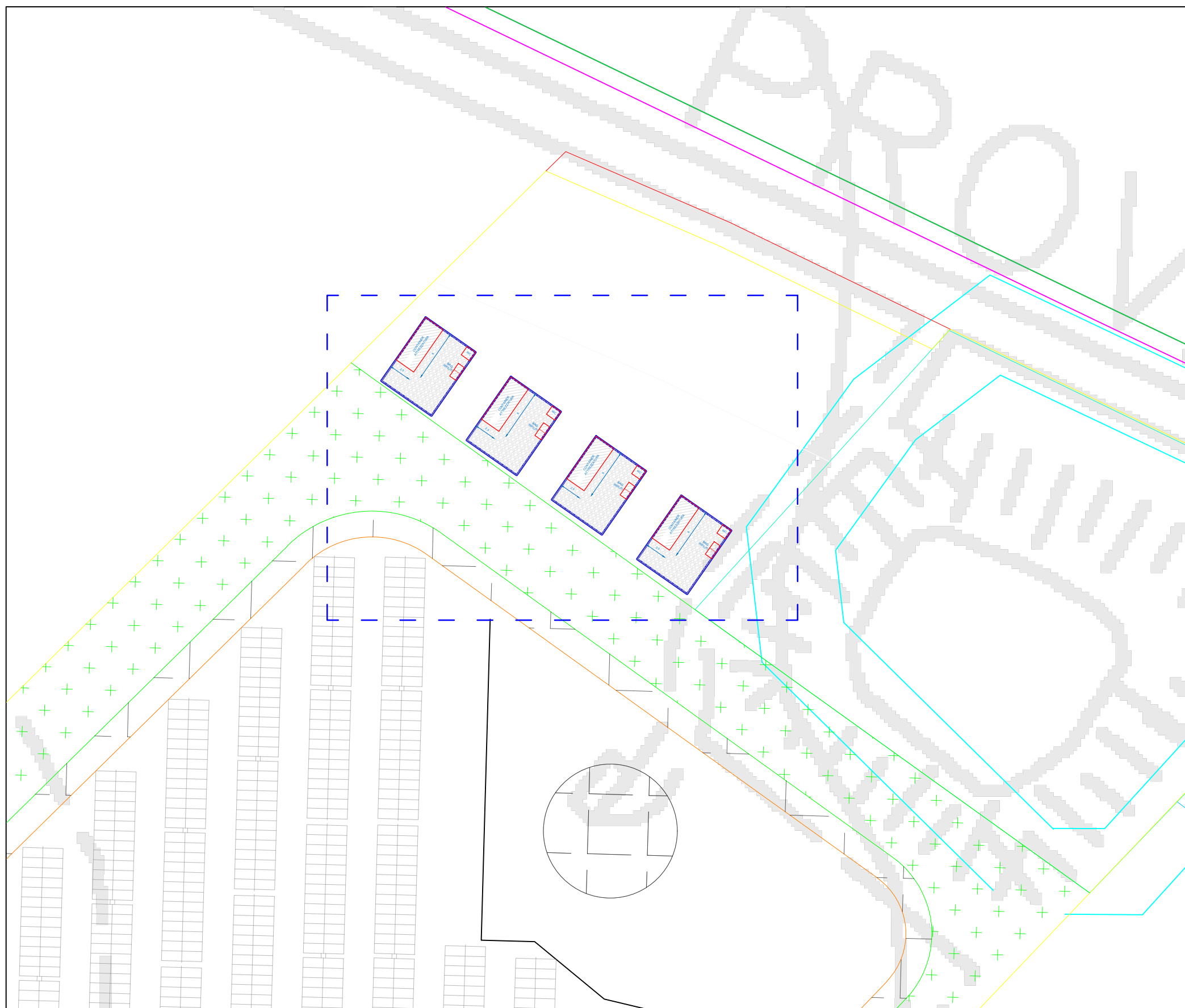
AREA CANTIERE FISSO 08 - scala 1: 500



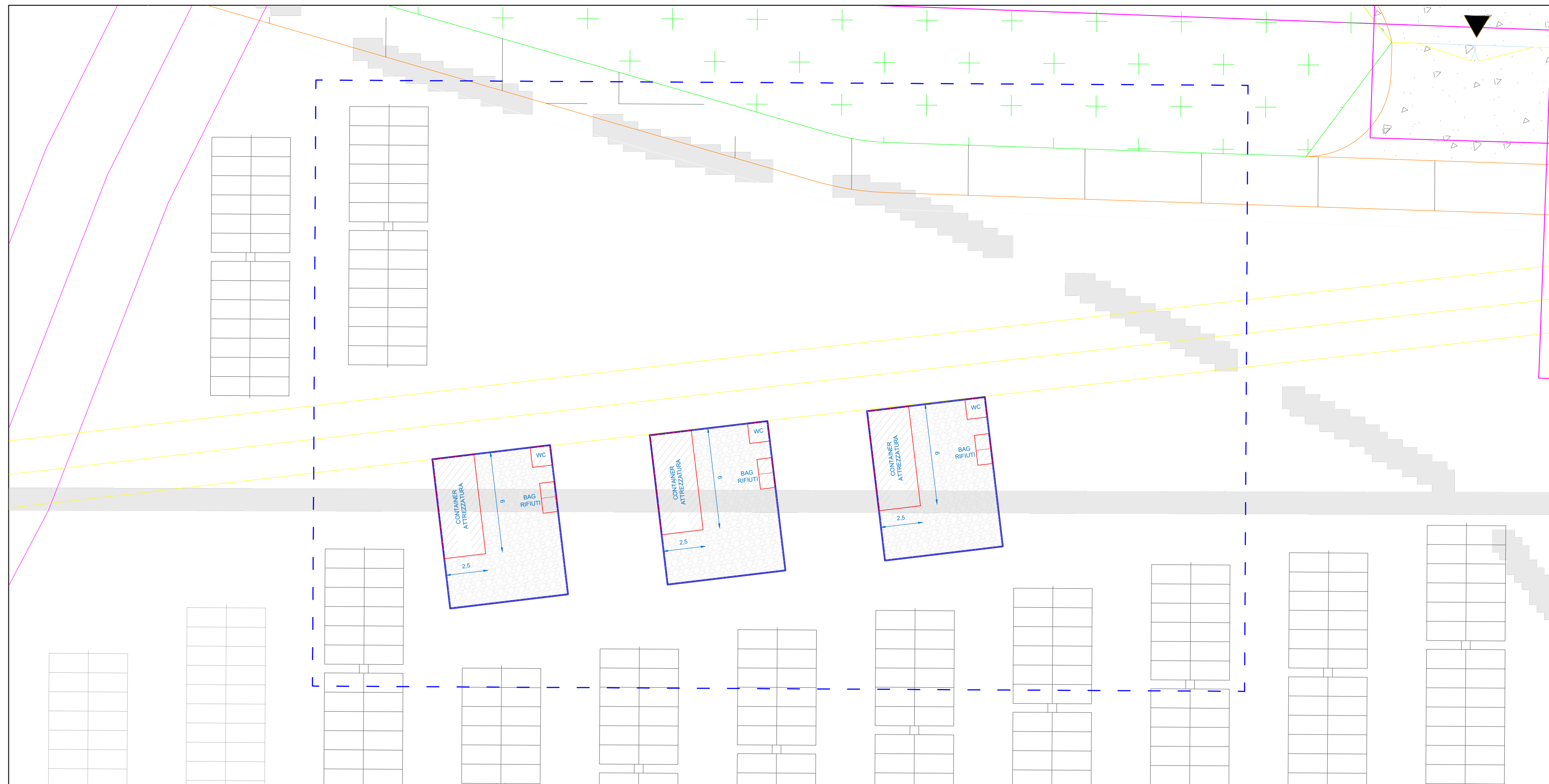
AREA CANTIERE FISSO 10 - scala 1: 500



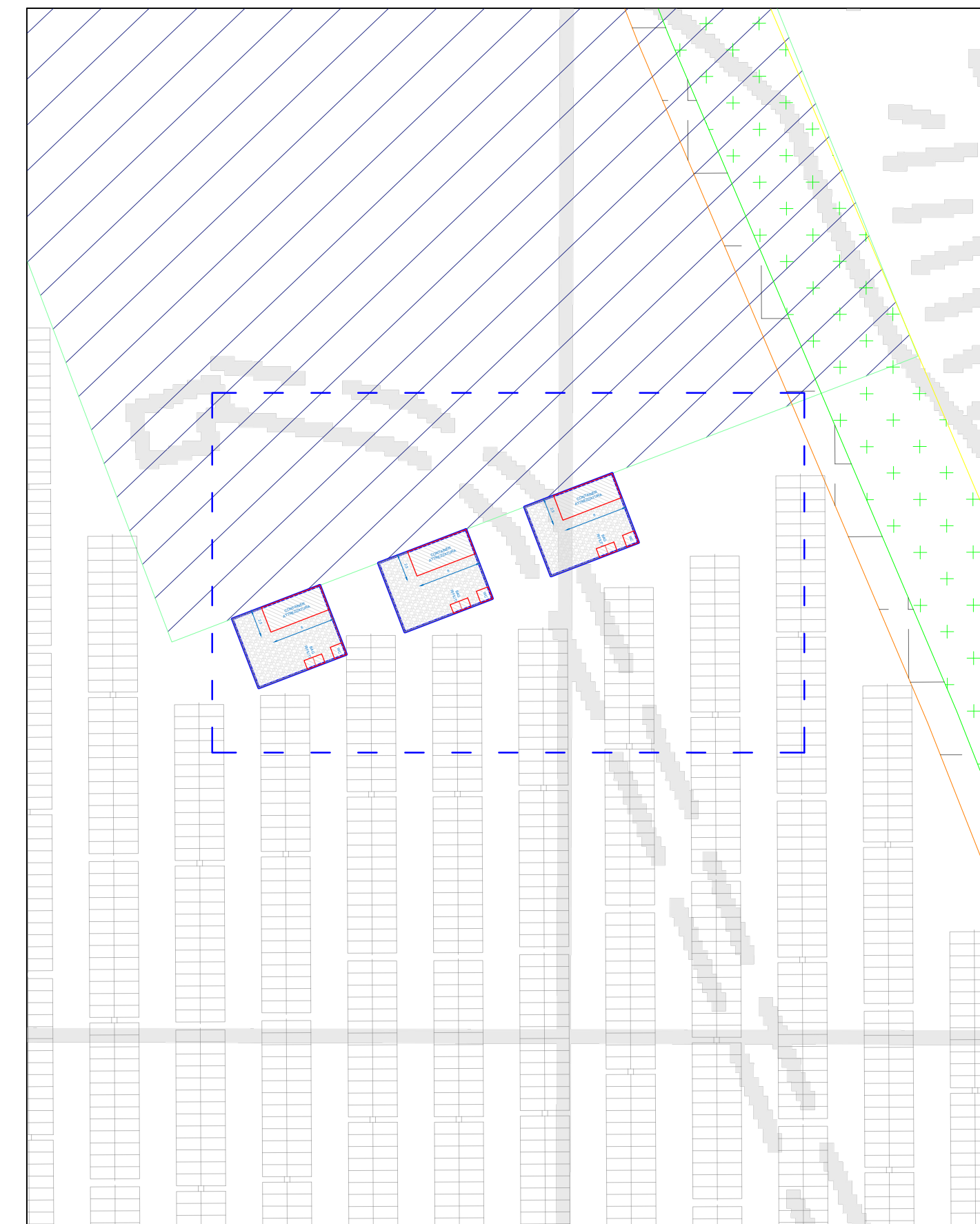
AREA CANTIERE MOBILE 03 - scala 1: 500



AREA CANTIERE MOBILE 04 - scala 1: 200



AREA CANTIERE MOBILE 07 - scala 1: 500



REGIONE SICILIA
COMANDO SALINE MAZARA DEL VALLO,
SANTA NINFA E CASTELVETRANO
IN PROVINCIA DI TRAPANI

PROPRONTE
absolute energy
E.P.T.A.

PROGETTAZIONE Ing. Francesco Luvato
EolPower
Investments

PROGETTO DI UN IMPIANTO AGROVOLTAICO E OPERE CONNESSE DA REALIZZARSI IN PROVINCIA DI TRAPANI NEI COMUNI DI SALEMI, MAZARA DEL VALLO, SANTA NINFA E CASTELVETRANO, DENOMINATO "CLUSTER B"

PROGETTO DEFINITIVO
ELABORATO PLANIMETRIA AREE DI CANTIERE SU CTR

SCALA 1: 200 / 1: 500
CODICE ELABORATO CLBD014-00

20/12/2022
REVISIONE
REVISIONE
REVISIONE
REVISIONE

F. LONELLO
VERIFICA

ABSOLUTE ENERGY SICILIA S.R.L.
APPROVATO