

- biogas ●
- biometano ●
- eolico ●
- fotovoltaico ●
- efficienza energetica ●
- waste to chemical ●

# Relazione Idrologica-Idraulica

## *Elaborati grafici PARTE II*

Progetto definitivo

Impianto eolico di "Castellana Sicula"

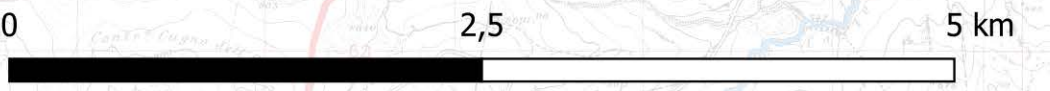
Comuni di Castellana Sicula e Polizzi Generosa (PA)

Località "Cozzo Bagianello"

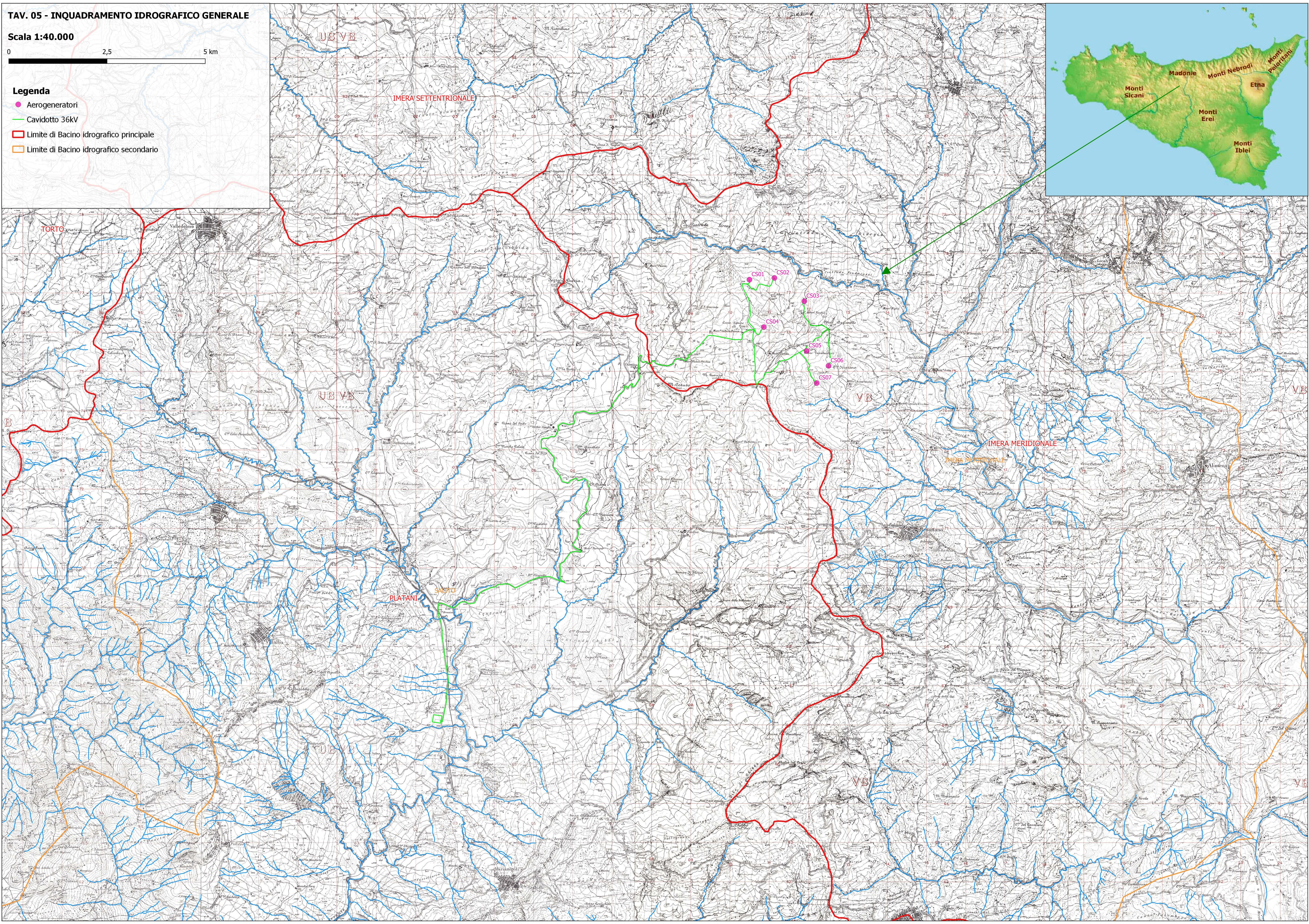
N. REV.	DESCRIZIONE	ELABORATO	CONTROLLATO	APPROVATO	
a	Emissione	Sicilwind srl	Asja Castellana Polizzi srl	Sicilwind srl	IT/EOL/E-CASI/PDF/C/CT/108-a 24/10/2022 Via Ivrea, 70 - Rivoli (TO) Italia T +39 011.9579211 F +39 011.9579241 info@asja.energy

TAV. 05 - INQUADRAMENTO IDROGRAFICO GENERALE

Scala 1:40.000

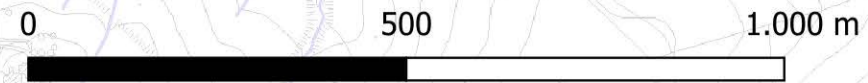


- Legenda**
- Aerogeneratori
  - Cavidotto 36kV
  - Limite di Bacino idrografico principale
  - Limite di Bacino idrografico secondario



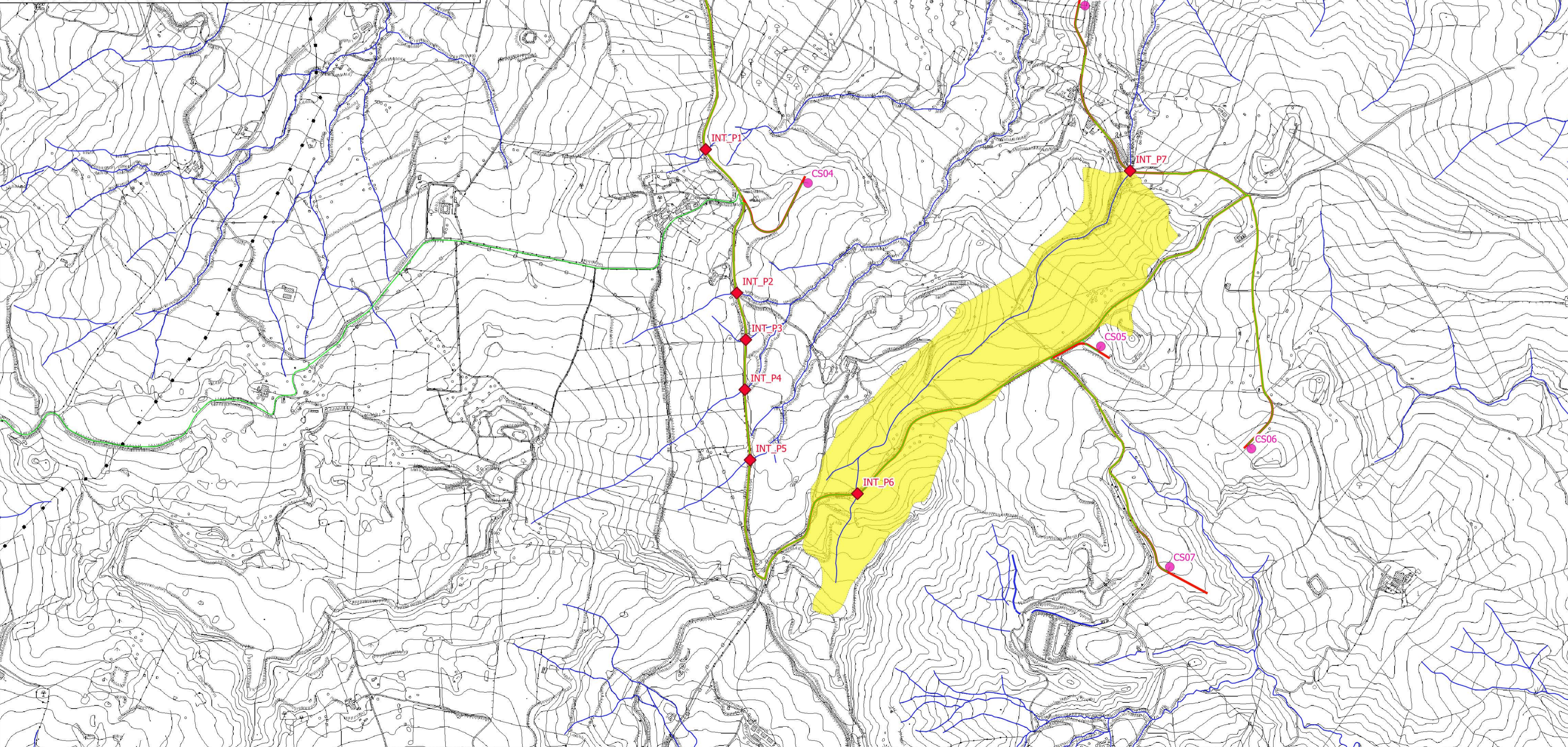
**TAV. 06\_a - RETICOLO IDROGRAFICO C.T.R. (Parco Eolico)**

**Scala 1:10.000**



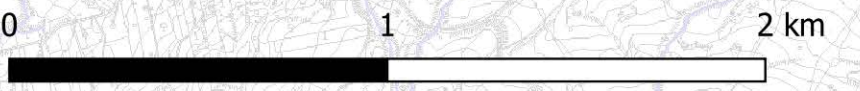
**Legenda**

- ◆ Interferenze Cavidotti Parco Eolico
- Aerogeneratori
- Cavidotto 36kV
- Strade Nuova Costruzione
- Strade Esistenti o da adeguare
- Elementi Idrografici CTR 2012-2013**
- Corsi d'acqua
- Sottobacino Idrografico INT.P7

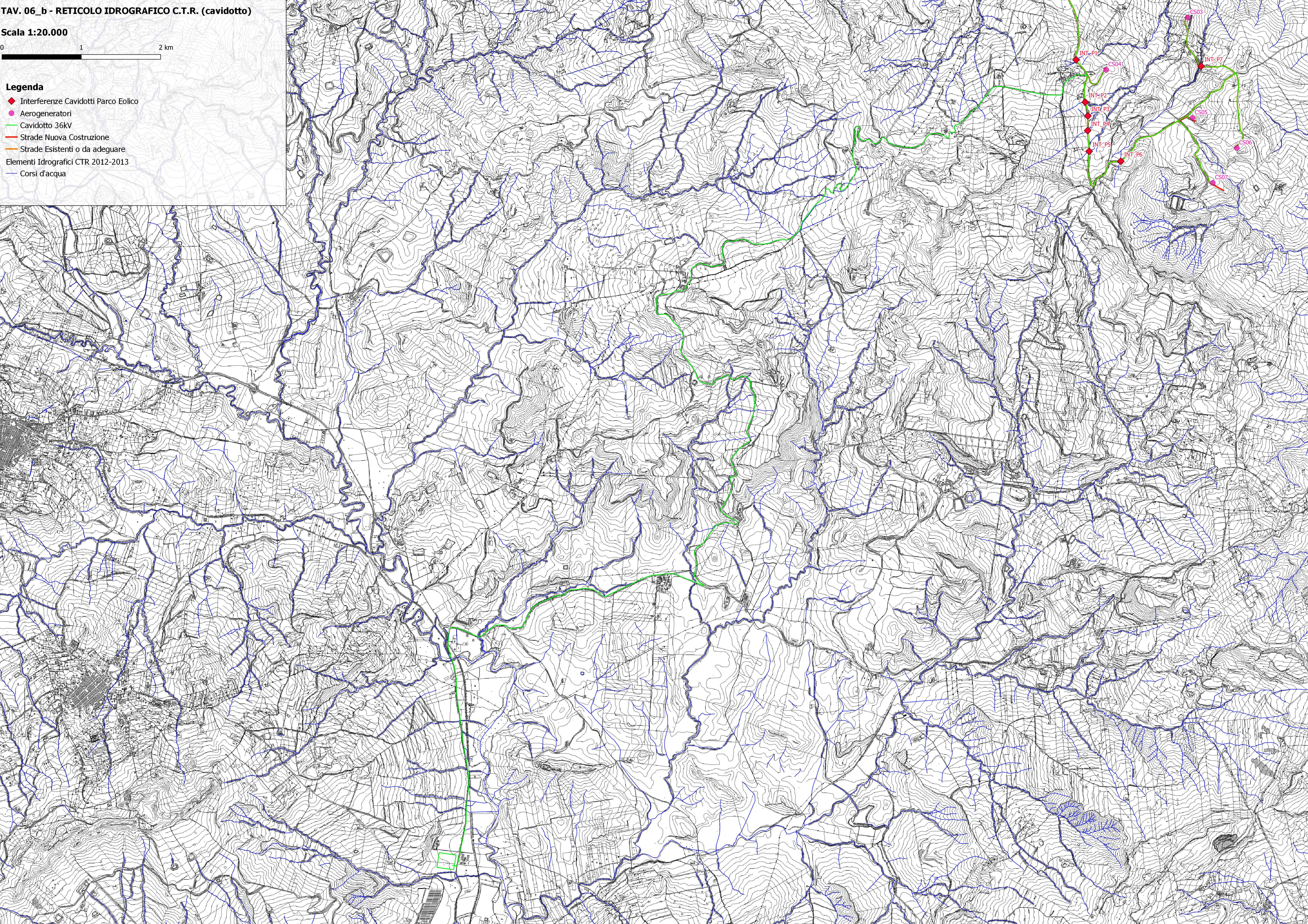


TAV. 06\_b - RETICOLO IDROGRAFICO C.T.R. (cavidotto)

Scala 1:20.000



- Legenda**
- ◆ Interferenze Cavidotti Parco Eolico
  - Aerogeneratori
  - Cavidotto 36kV
  - Strade Nuova Costruzione
  - Strade Esistenti o da adeguare
  - Elementi Idrografici CTR 2012-2013
  - Corsi d'acqua









# TAV. 07 - CARTA USO DEL SUOLO (Corine Land Cover)

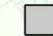
















scala 1:10.000

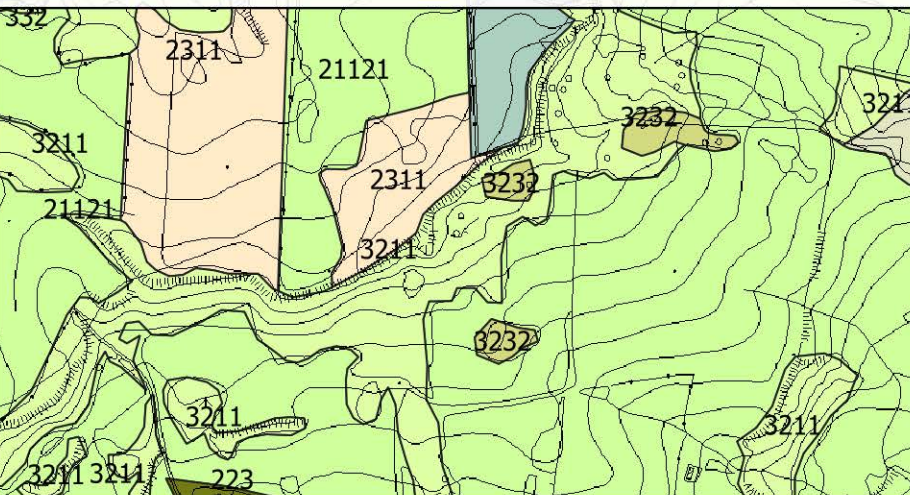
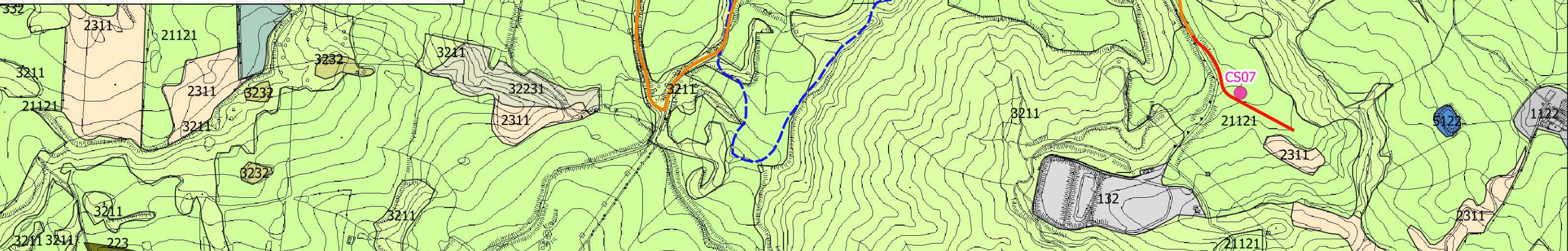
0 250 500 m

## Legenda

-  Interferenze Cavidotti Parco Eolico
-  Aerogeneratori
-  Strade Nuova Costruzione
-  Strade Esistenti o da adeguare
-  Cavidotto 36kV
-  Sottobacino Idrografico INT.P7

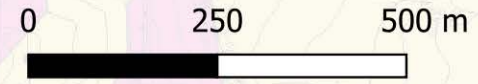
Corine\_Land\_Cover

-  1122 - Borghi e fabbricati rurali
-  132 - Aree ruderali e discatiche
-  21121-Seminativi semplici e colture erbacee estensive
-  221 - Vigneti
-  222 - Frutteti
-  223 - Oliveti
-  2311 - Incolti
-  242 - Sistemi colturali e particellari complessi (mosaico di appezzamenti agricoli)
-  31122 - Querceti termofili
-  3116 - Boschi e boscaglie ripariali
-  3125 - Rimboschimenti a conifere
-  3211 - Praterie aride calcaree
-  32222 - Pruneti
-  32231 - Ginestreti
-  3232 - Gariga
-  332 - Rocce nude, falesie, rupi e affioramenti
-  5122 - Laghi artificiali



# TAV. 08 - CARTA LITOLOGICA

scala 1:10.000



## Legenda

- Aerogeneratori
- Strade Nuova Costruzione
- Strade Esistenti o da adeguare
- ▭ Sottobacino Idrografico INT.P7

## Geologia

- AV: Alternanza caotica di argille e marne varicolori
- b: Sabbie e ghiaie a grana da media a grossolana
- FYN: Alternanze di argilliti nerastre, argille e quarzareniti
- FYN\_a: Quarzareniti e quarzoruditi
- POZ: Alternanza di calcilutiti e calcisiltiti biancastre
- SIC: Argille siltoso-marnose
- TRB: Marne e calcari marnosi
- TRV: marne e argille debolmente marnose
- TRV-1: Orto e paraconglomerati alternati a sabbie

