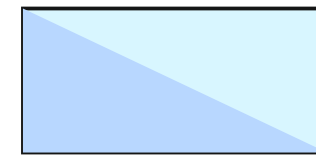
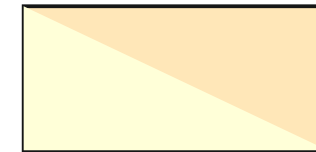





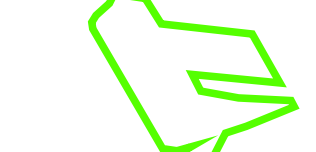
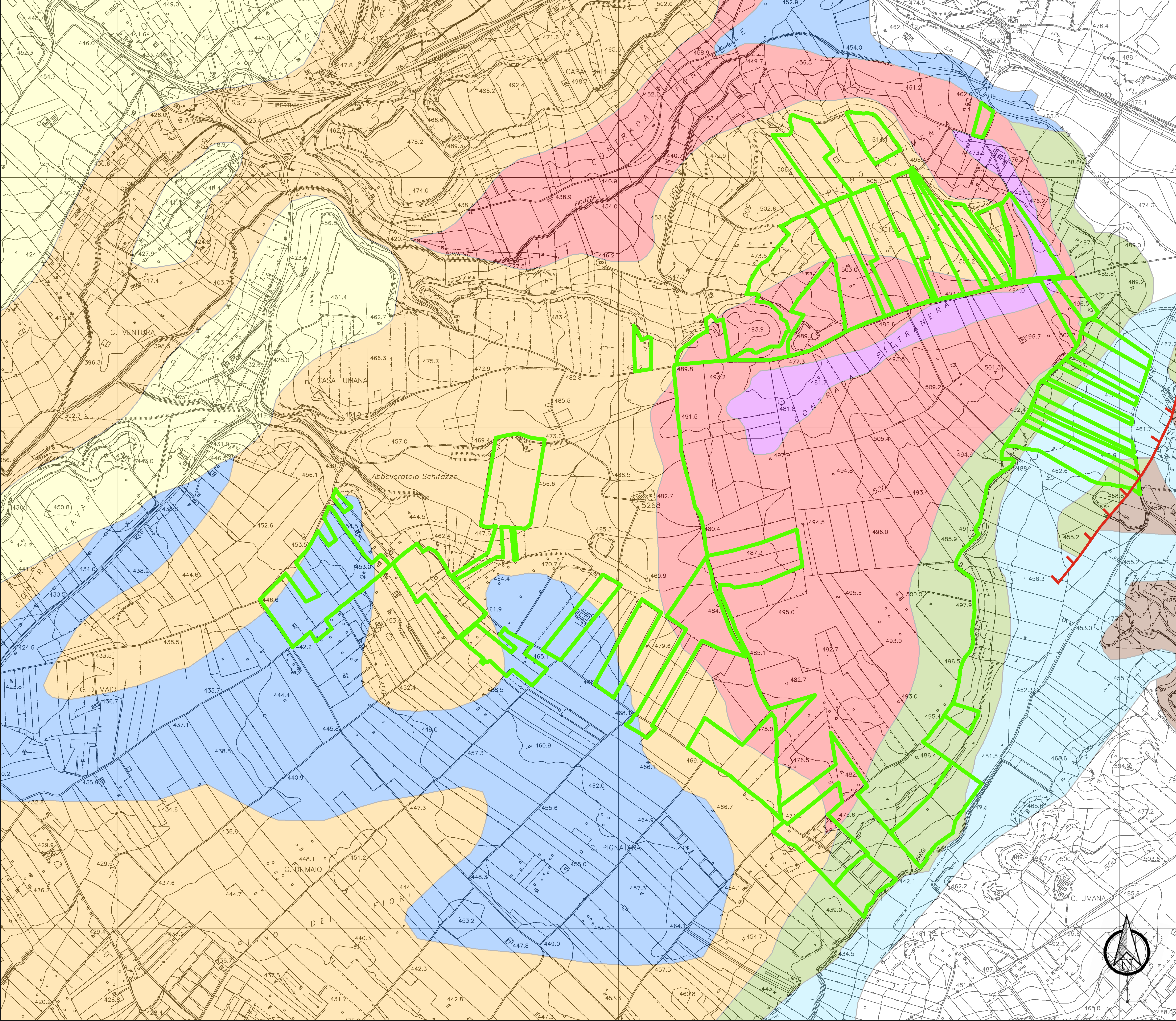


Legenda

-  Alluvioni recenti/terrazzate
 $\gamma=1.80/1.90 \text{ t/m}^3$
 $\phi=20/22^\circ$
 $c=0.0/0.05 \text{ kg/cm}^2$
 $V_s=200/250 \text{ m/s} - V_p= 600/786 \text{ m/s}$
-  Sabbie quarzose/Sabbie rossastre
 $\gamma=1.85/2.10 \text{ t/m}^3$
 $\phi=30/32^\circ$
 $c=0.0 \text{ kg/cm}^2$
 $V_s=280/380 \text{ m/s} - V_p= 670/1400 \text{ m/s}$
-  Calcari marnosi (Trubi)/Calcare di base
 $\gamma=1.9/2.0 \text{ t/m}^3$
 $\phi=33/35^\circ$
 $c=0.0/0.10 \text{ kg/cm}^2$
 $V_s=300/400 \text{ m/s} - V_p= 720/1300 \text{ m/s}$
-  Vulcaniti basiche
 $\gamma=1.9/2.2 \text{ t/m}^3$
 $\phi=33/35^\circ$
 $c=0.0 \text{ kg/cm}^2$
 $V_s=480/550 \text{ m/s} - V_p= 1180/1340 \text{ m/s}$
-  Marne grigio azzurre
 $\gamma=1.8/2.0 \text{ t/m}^3$
 $\phi=24/26^\circ$
 $c=0.1/0.20 \text{ kg/cm}^2$
 $V_s=260/278 \text{ m/s} - V_p= 630/990 \text{ m/s}$
-  Contatto stratigrafico
-  Faglia certa (trattini sul lato ribassato)
-  Aree in studio



SCALA 1:5.000

Siel
Siel Agrisolare S.r.l.
 PROPONENTE:
 - Corso Giacomo Matteotti, 20121 Milano - sttag@siel.it - p.iva 12000420963

REGIONE SICILIA
CITTA' METROPOLITANA DI CATANIA
COMUNE DI CALTAGIRONE
 Oggetto: PROGETTO PER LA REALIZZAZIONE DI UN PARCO AGRIVOLTAICO CON POTENZA DI PICCO PARI A 222,26 MW_p E POTENZA DI IMMISSIONE 195 MW, UBICATO NEL COMUNE DI CALTAGIRONE (CT) IN CONTRADA PIETRANERA E OPERE CONNESSE RICADENTI NEI COMUNI DI LICODIA EUBEA (CT) E CHIAROMONTE GULFI (RG)

ELABORATO: Carta Litotecnica

PROGETTAZIONE: i-Project S.R.L.	Elaborato da: Geol. Ranieri Santarosa	COORDINATORE SIA: Ing. Salvatore Mele	IL PROGETTISTA: Arch. Antonio Manco
ELABORATO: AVCAL-T062.4	SCALA: 1:5.000	DATA: Giugno 2022	Prot. Int. n°: 0108 Rev.: 1 Mod.: 0