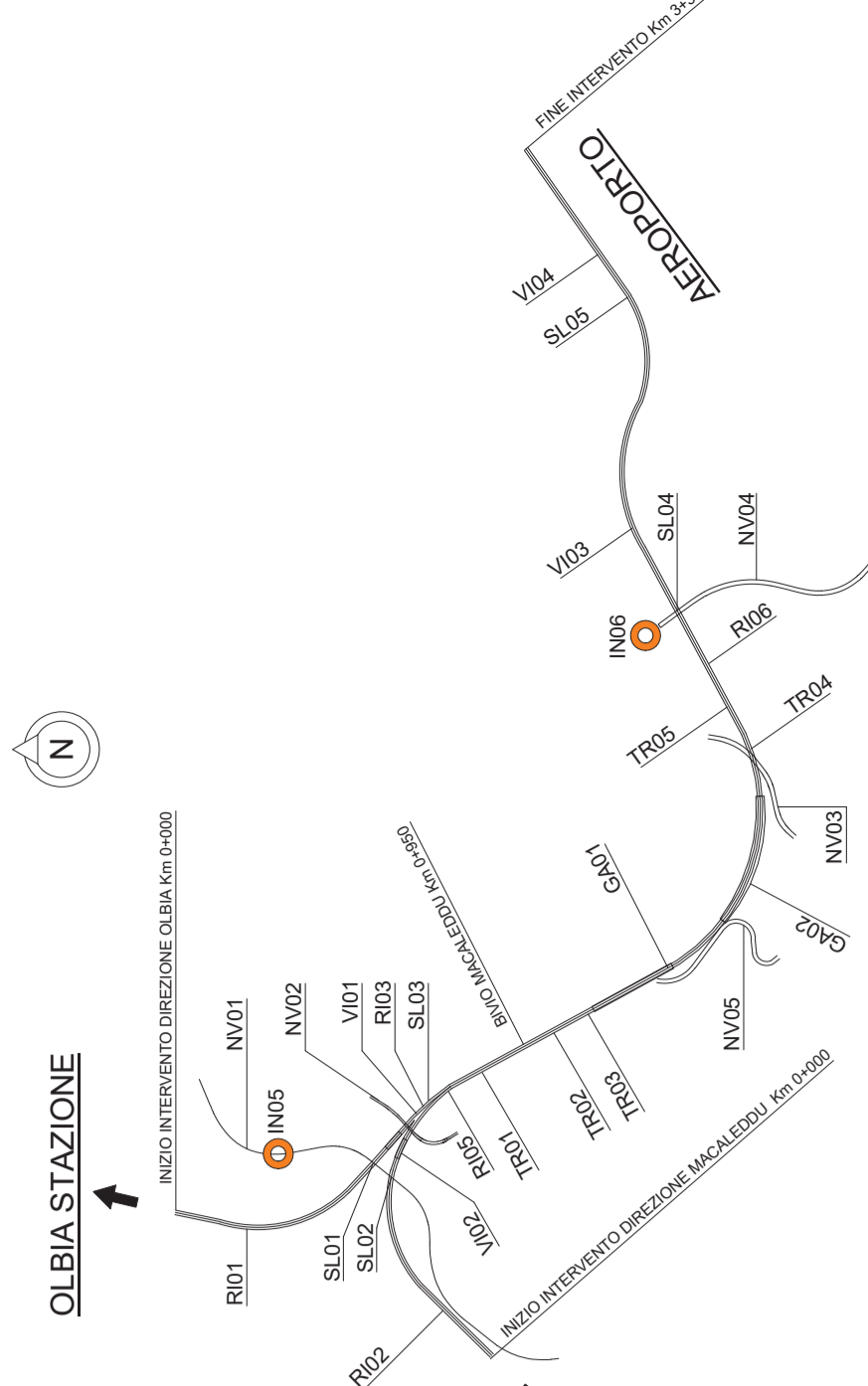
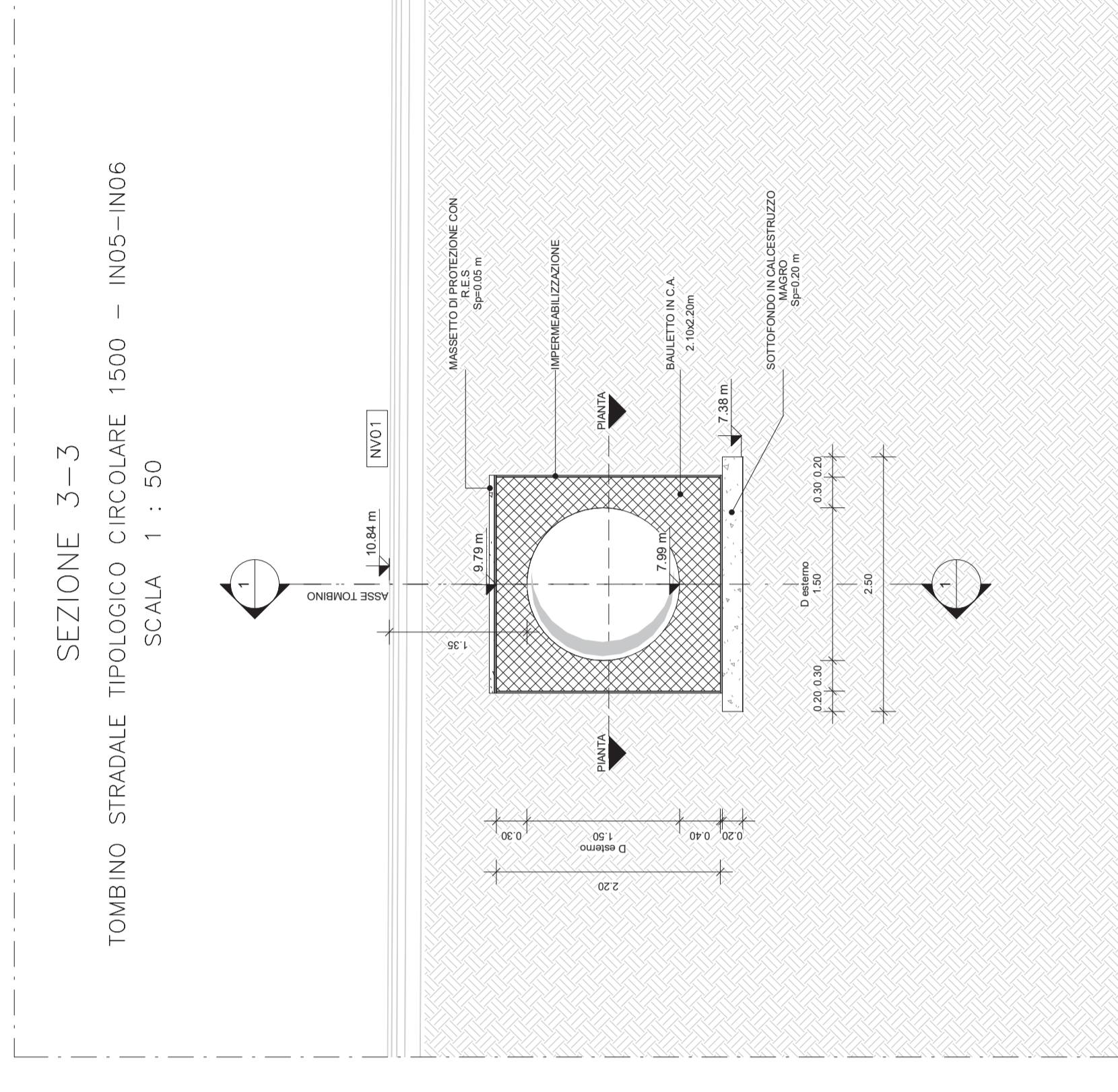
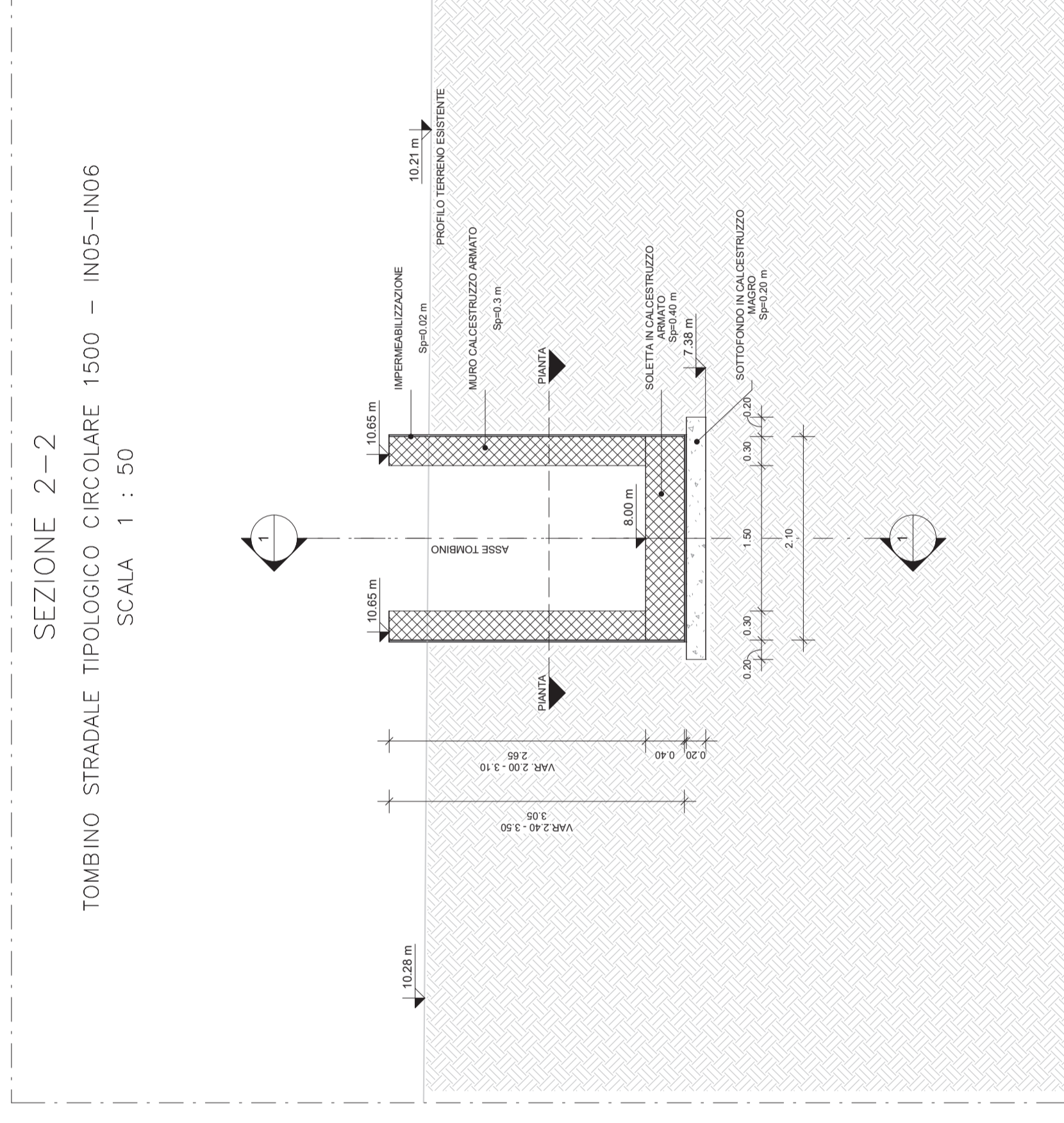
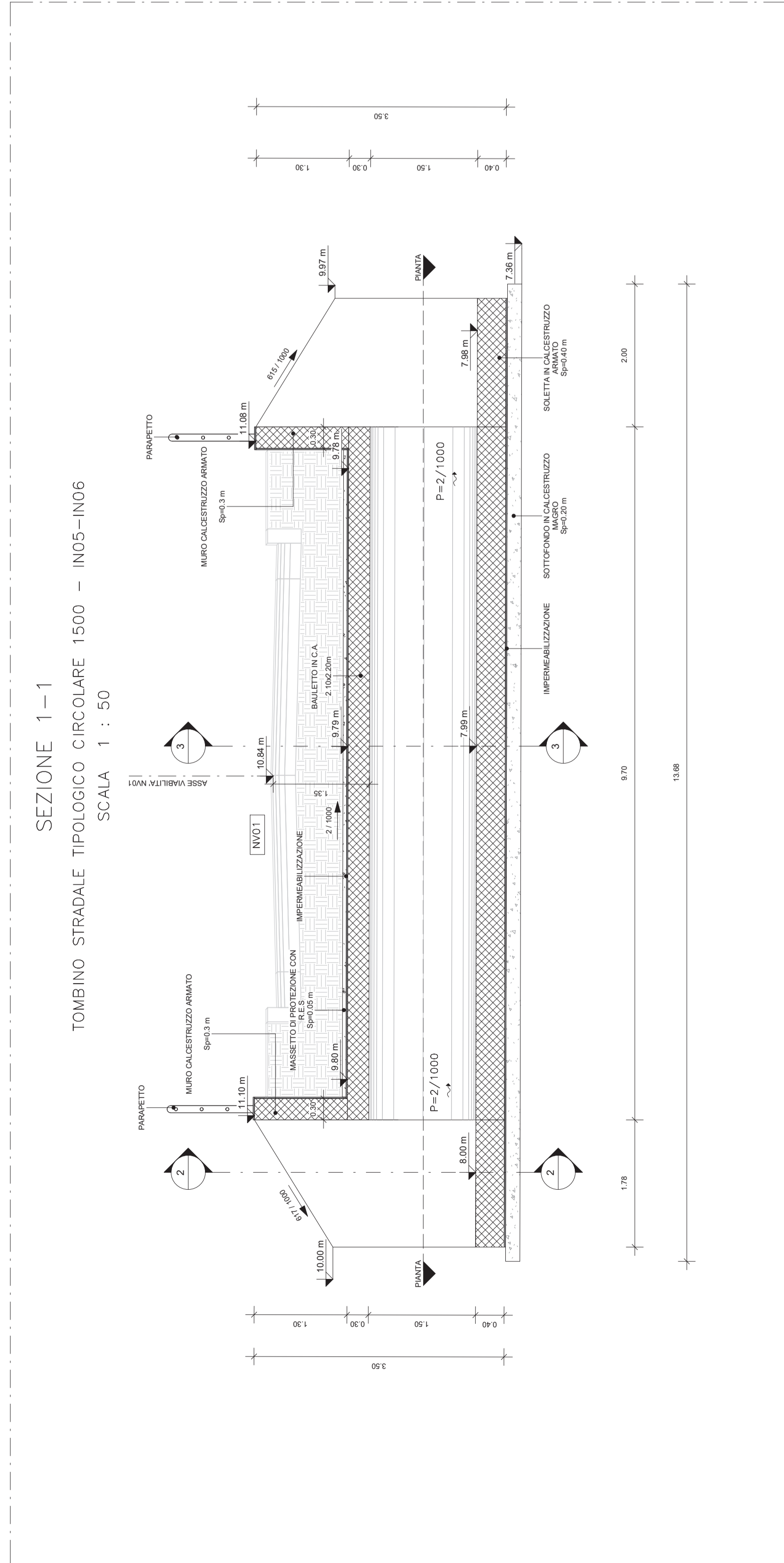
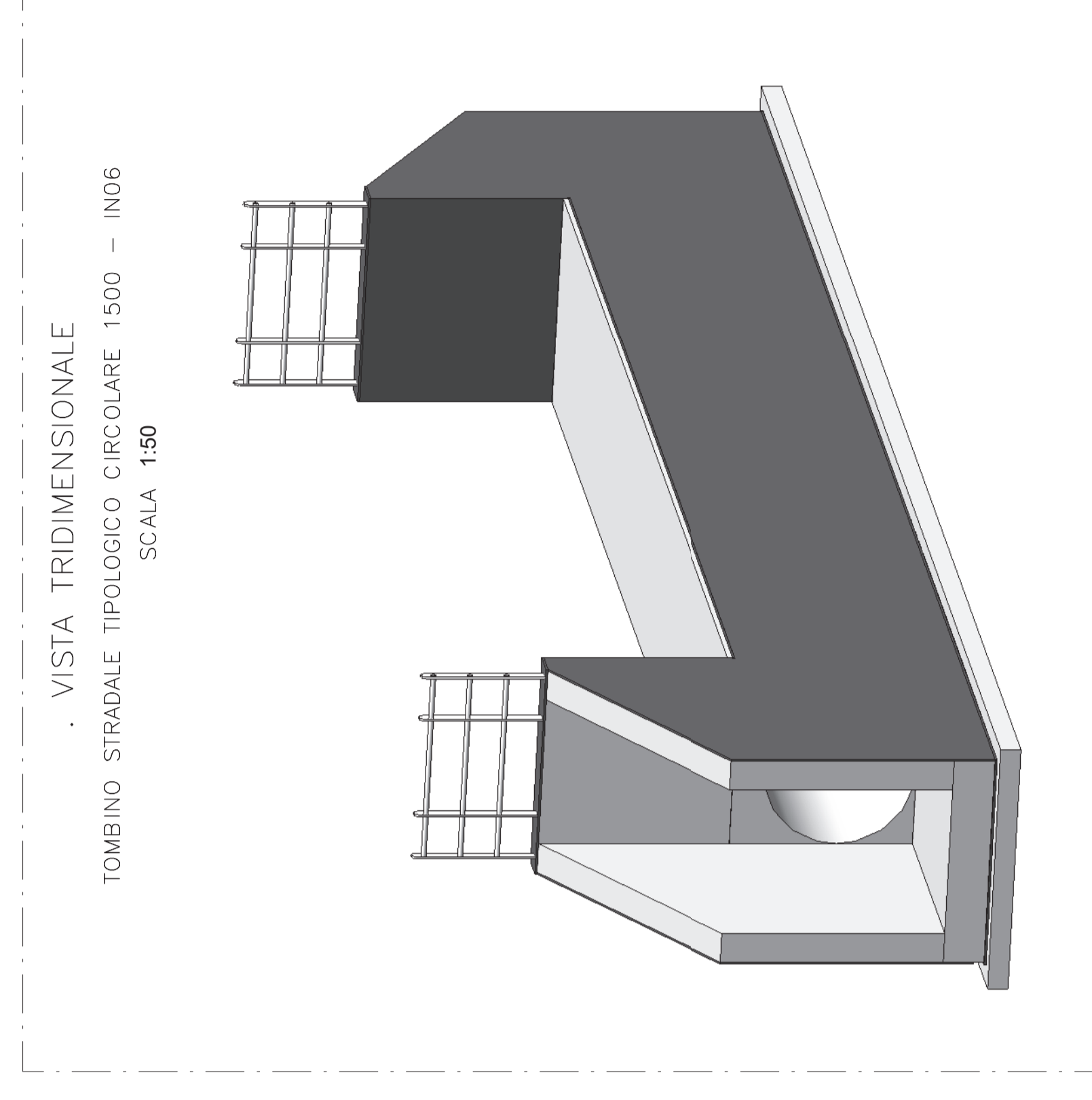
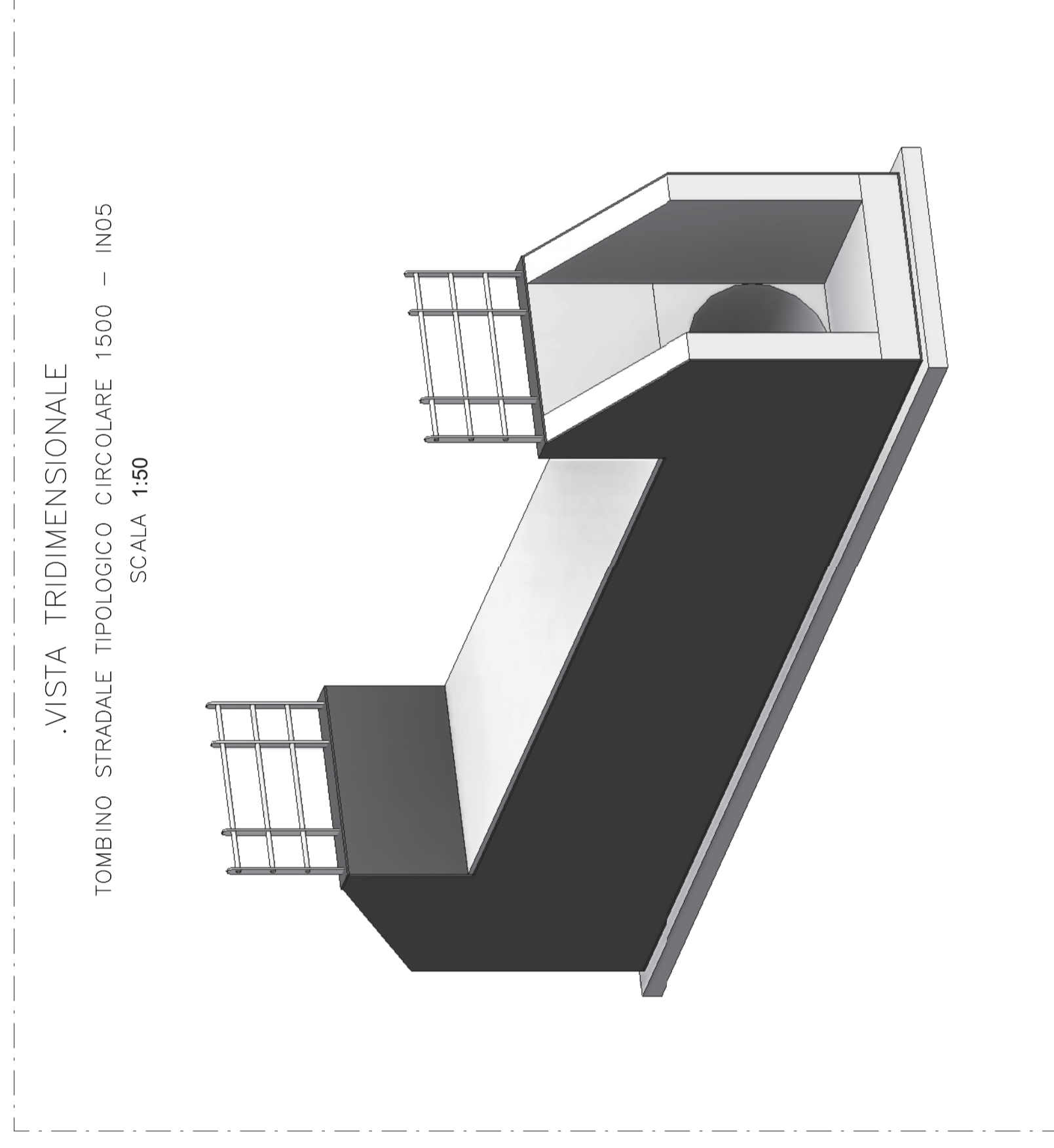
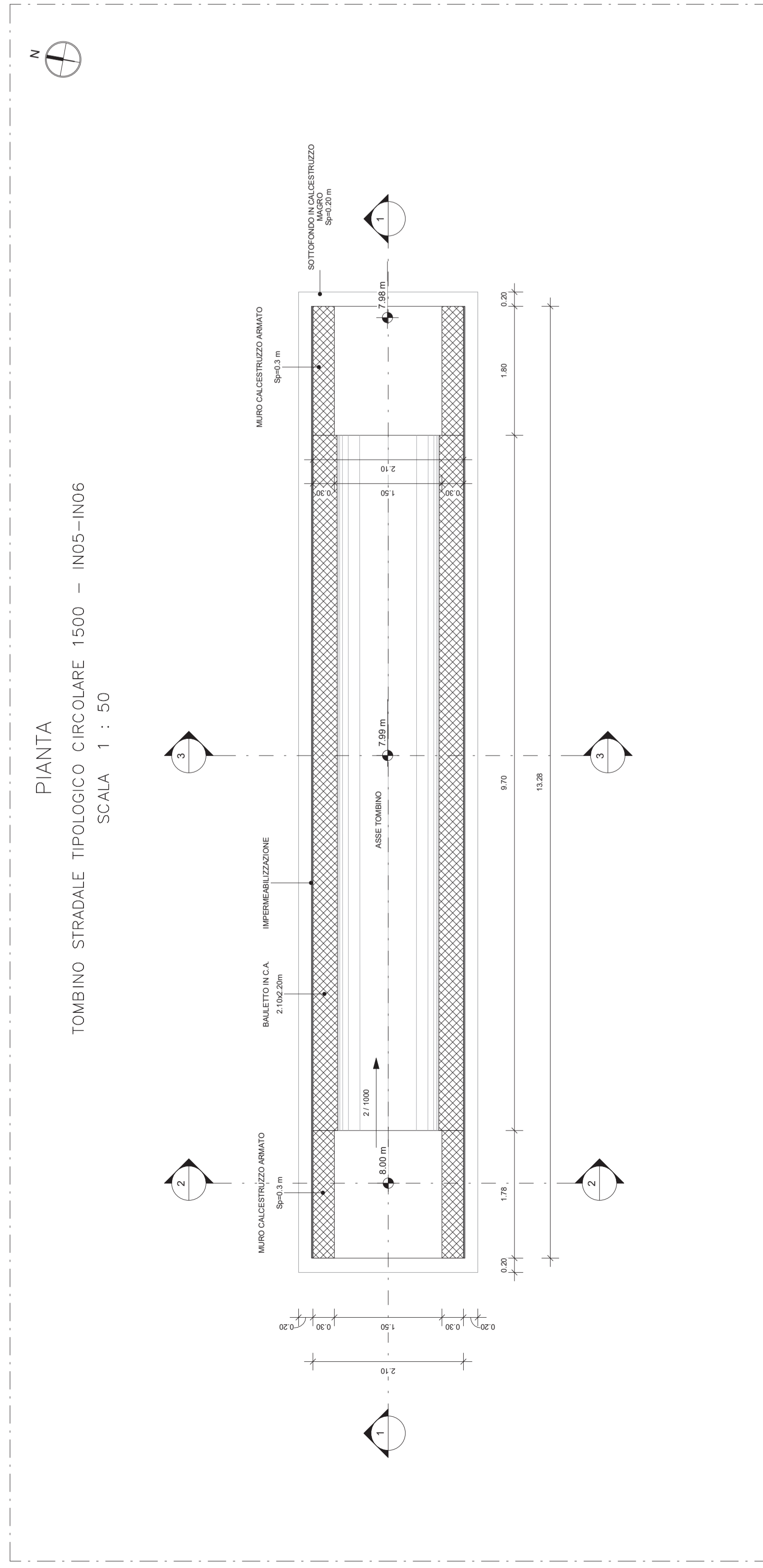


TOMBINO STRADALE IN05 - IN06			
Via/Strada	Progressiva	VBS L (m)	O.S.
IN01	0+540.00	IN05	13.28 8.00-7.98
IN04	2+050.00	IN06	17.30 8.00-7.97



COMMITTENTE:  
**RFI**  
RIF. FERRI  
GRUPPO IRI/STET/ENEL/ENEA/ENI/IRIDI/INTELEST/ITALTEL

PROGETTAZIONE:  
**ITALFER**  
ING. FRANCESCO DI GIACOMO

U.O. COORDINAMENTO DI SISTEMA E PFTE  
PROGETTO DI FATTIBILITA' TECNICA ECONOMICA

COLLEGAMENTO AEROPORTO OLBIA  
TOMBINO STRADALE TIPOLOGICO CIRCOLARE 1500 - IN05-IN06  
PIANTA, PROFILO E SEZIONI

SCALA:	VARIE
--------	-------

COMMESSA	LOTTO	FASE	ENTE	TIPO DOC.	OPERABILITÀ	PROGR.	REV.
RR00	10	R	14	BZ	IN0000	003	A

Rev.	Descrizione	Realizzato	Data	Verificato	Data	Approvato	Data	Autorizzato	Data
A	Emissione Esecutiva		03/06/2022	M. Verrini	03/06/2022	T. Pileri	03/06/2022	G. Ingrosso	03/06/2022

Fig.: RR00 1014 14.82 IN000 003 A  
n. Ediz.: 1