

Comune di
Brindisi

Regione Puglia



Provincia di
Brindisi



Committente:



TAIGETE SOL S.R.L.
VIA MERCATO 3/5 CAP 20121 MILANO (MI)
c.f. 12502490969



Titolo del Progetto:

Progetto per la realizzazione e l'esercizio di un impianto agrifotovoltaico dotato di accumulo denominato "Bardi"

Documento:	PROGETTO DEFINITIVO	Codice Pratica:	58LXIS7	N° Tavola:	R.9.a
Elaborato:	PLANIMETRIE CATASTALI AREE ESTERNE	SCALA:	1:2.000		
		FOGLIO:	1 di 1		
		FORMATO:	A3		

Nome file: **58LXIS7_ Elaborato_Grafico_R.9.a.pdf**

Progettazione:

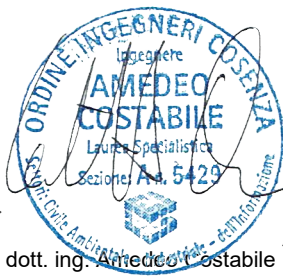


NEW DEVELOPMENTS S.r.l.
Piazza Europa, 14
87100 Cosenza (CS)

Progettisti:



dott. ing. Giovanni Guzzo Foliaro



dott. ing. Amedeo Costabile



dott. ing. Francesco Meringolo

Gruppo di lavoro

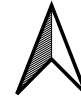
dott. ing. Denise Di Cianni
dott. ing. Diego De Benedittis
dott. ing. Giuseppe Imbrogno
dott. geol. Martina Petracca

Rev:	Data Revisione	Descrizione Revisione	Redatto	Controllato	Approvato
00	01/08/2022	PRIMA EMISSIONE	New Dev.	CSC	CSC

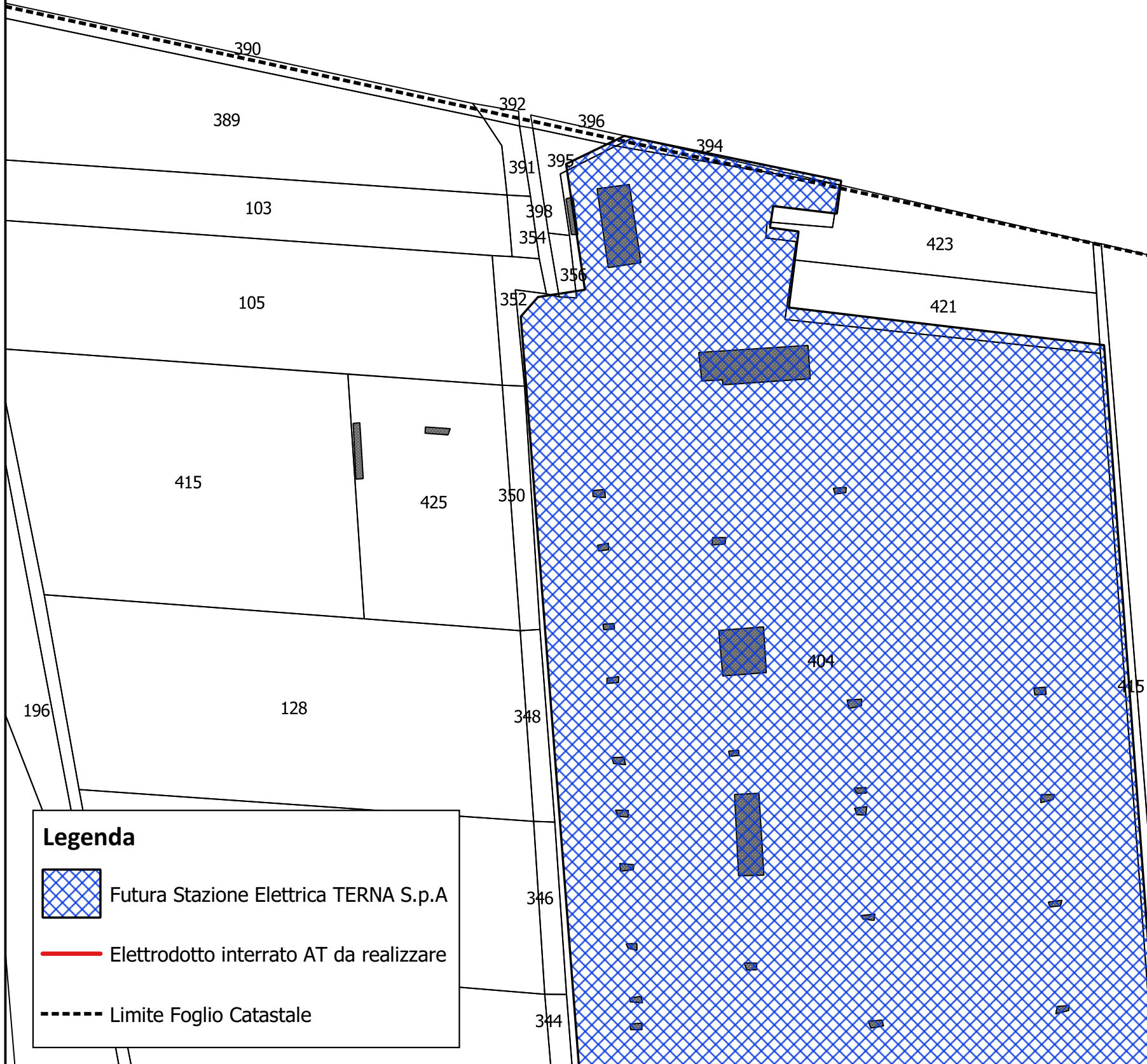
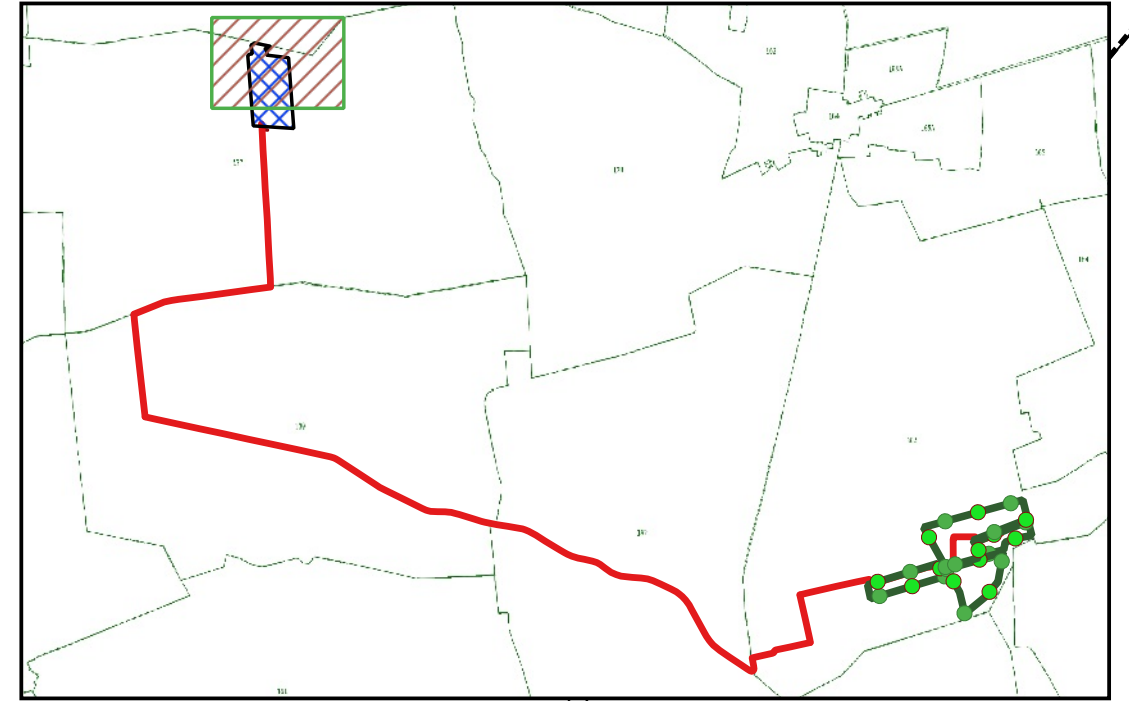
SCALA 1:2.000

BRINDISI Foglio 158

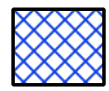


NORD



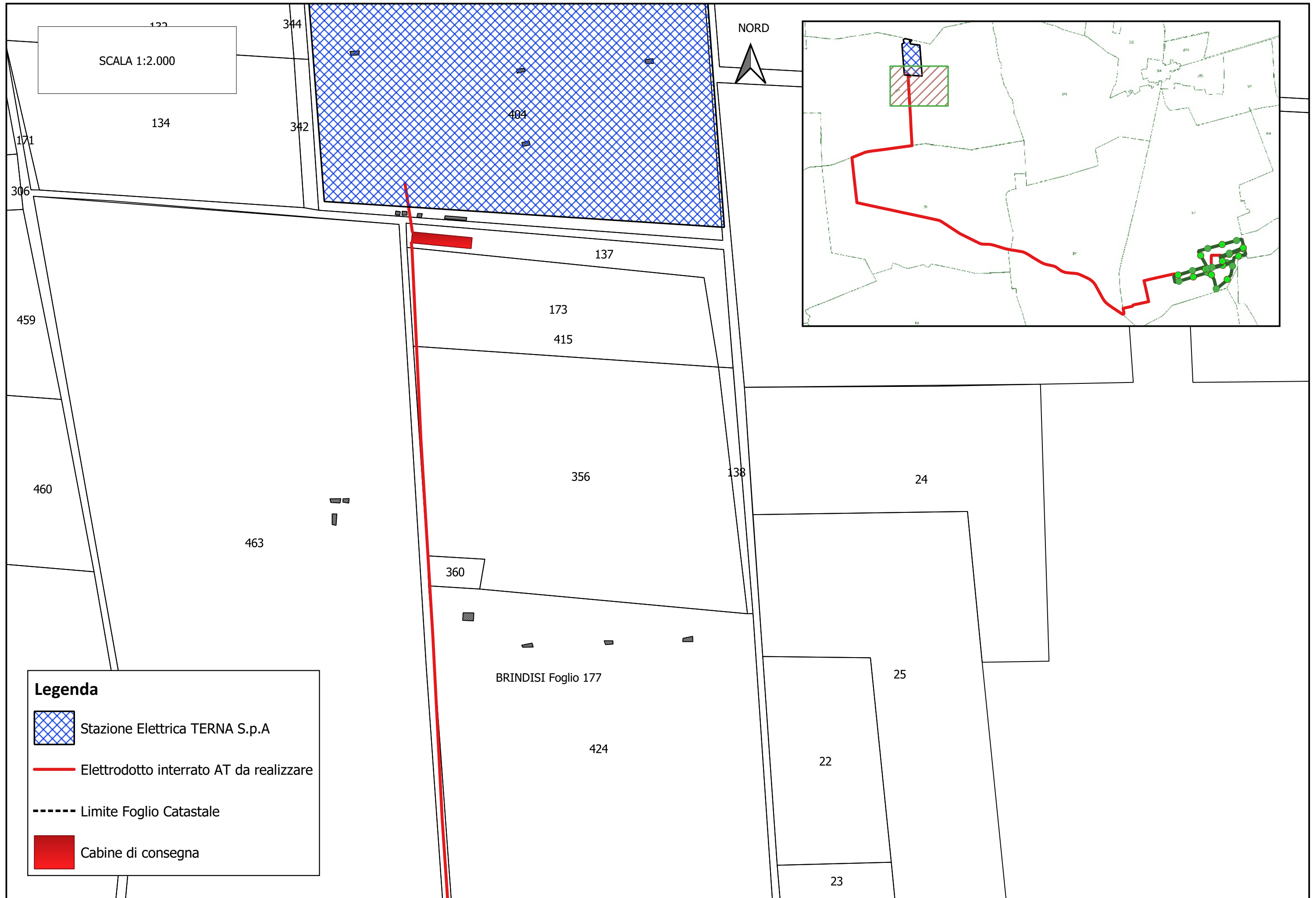
311



Legenda

-  Futura Stazione Elettrica TERNA S.p.A
-  Elettrodotto interrato AT da realizzare
-  Limite Foglio Catastale





BRINDISI Foglio 177



SCALA 1:2.000

NORD

Legenda

-  Stazione Elettrica TERNA S.p.A
-  Elettrodotto interrato AT da realizzare
-  Limite Foglio Catastale
-  Cabine di consegna

BRINDISI Foglio 177

SCALA 1:2.000

463

424

191

200

150

204

207

415

282

151

208

210

153

212

214

154

216

152

218

BRINDISI Foglio 177

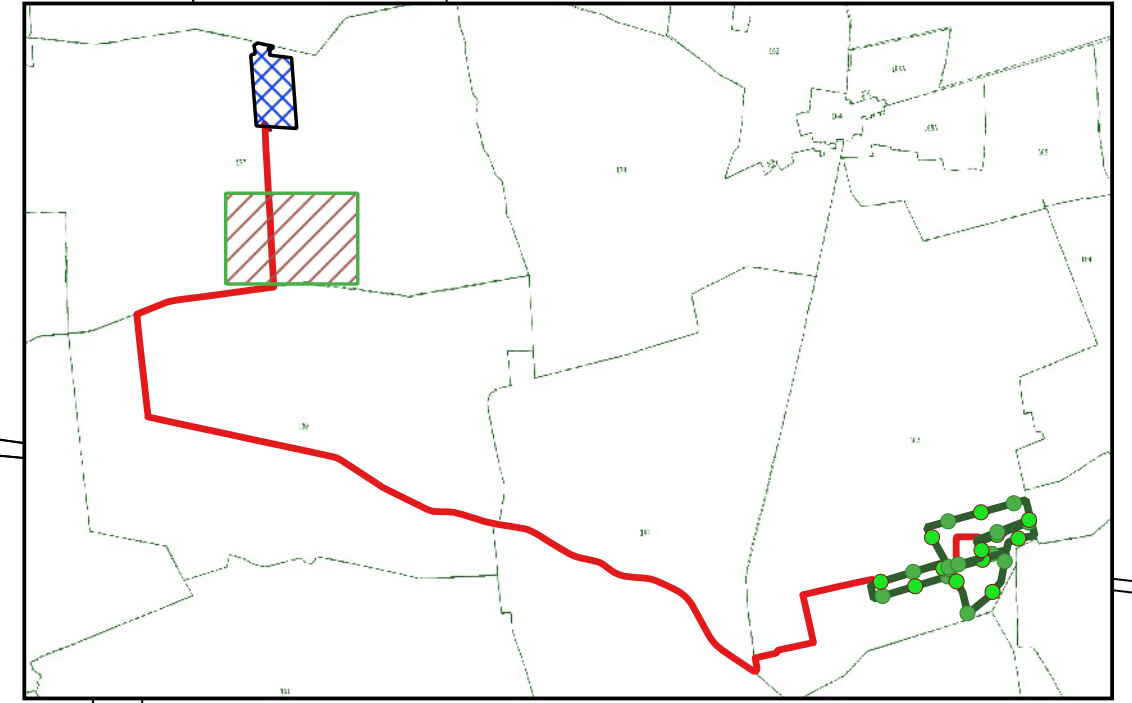
221

290

12

228

74-7579



NORD



Legenda



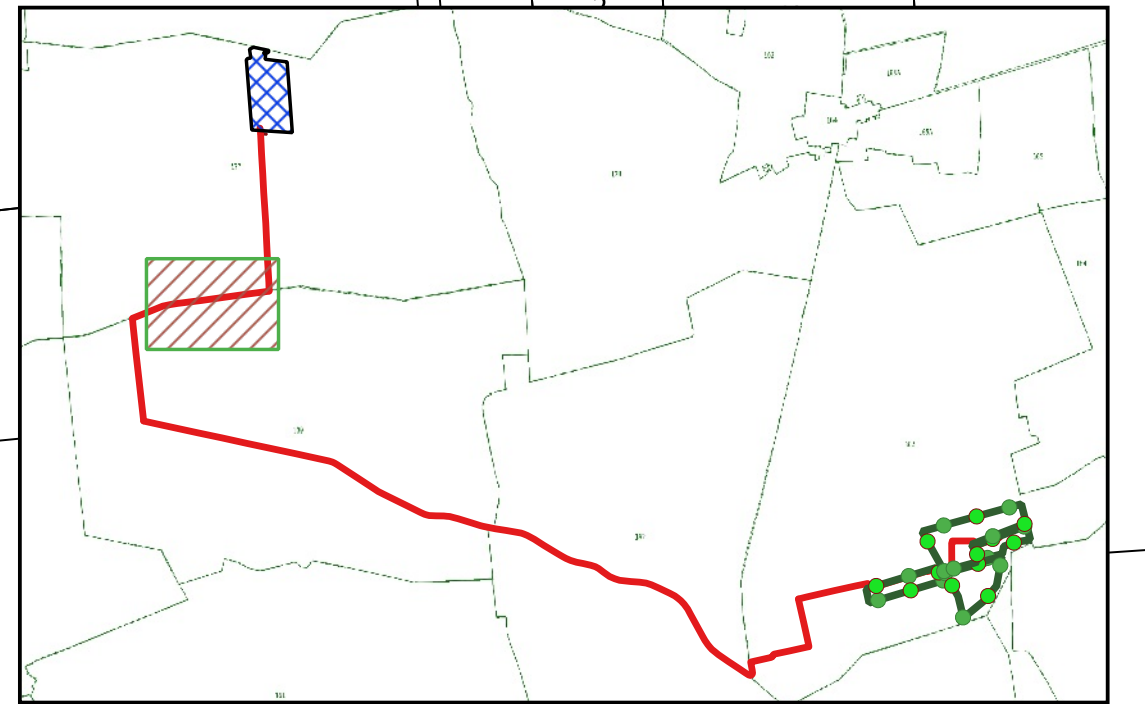
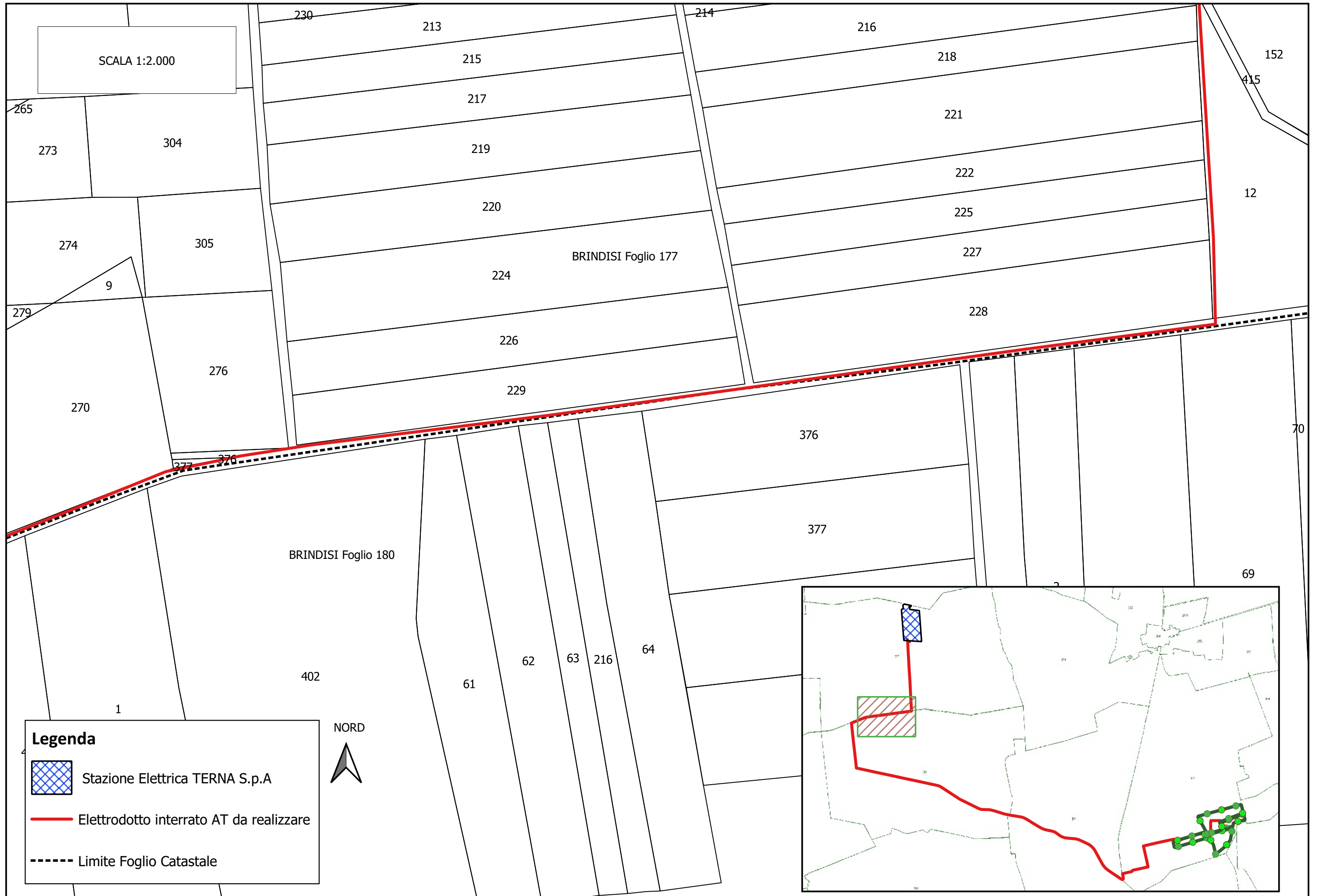
Stazione Elettrica TERNA S.p.A



Elettrodotto interrato AT da realizzare



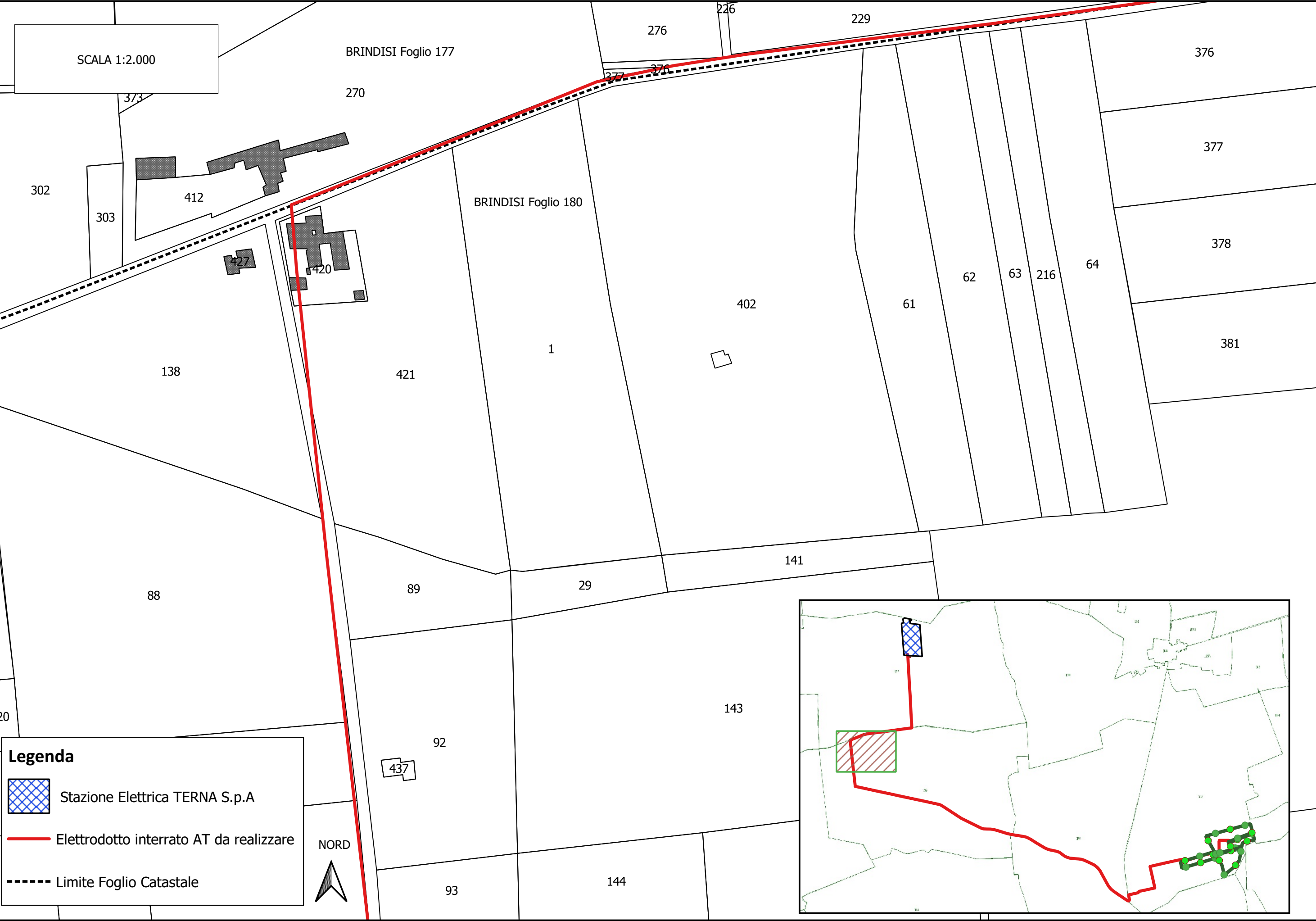
Limite Foglio Catastale






SCALA 1:2.000

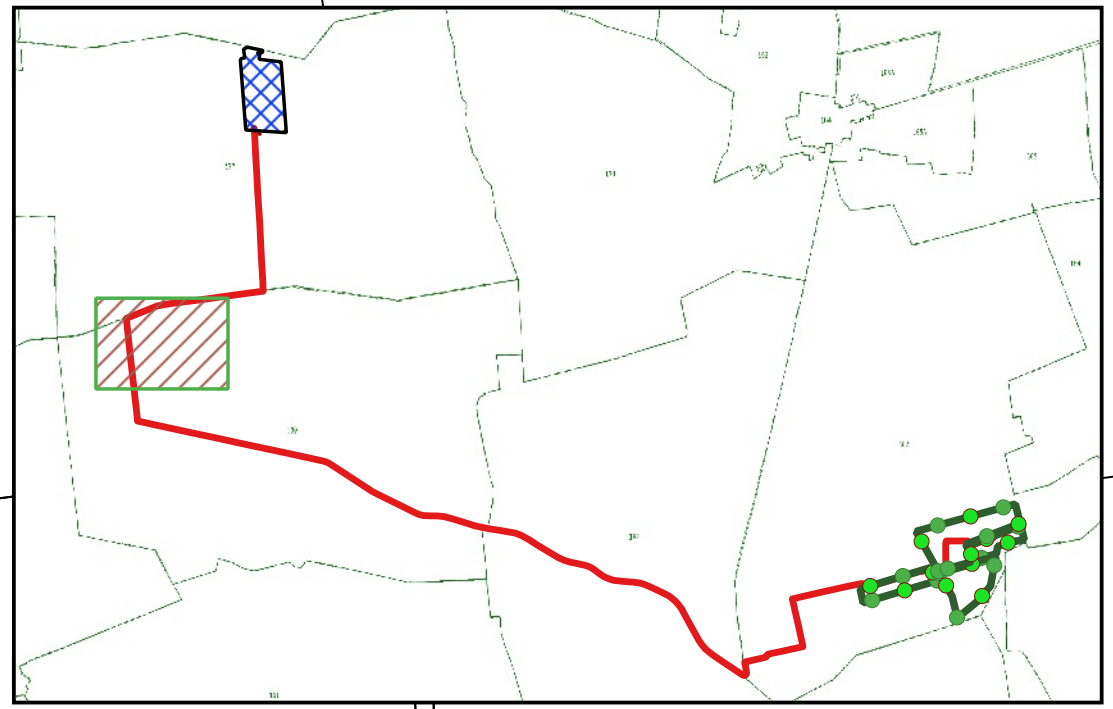
BRINDISI Foglio 177

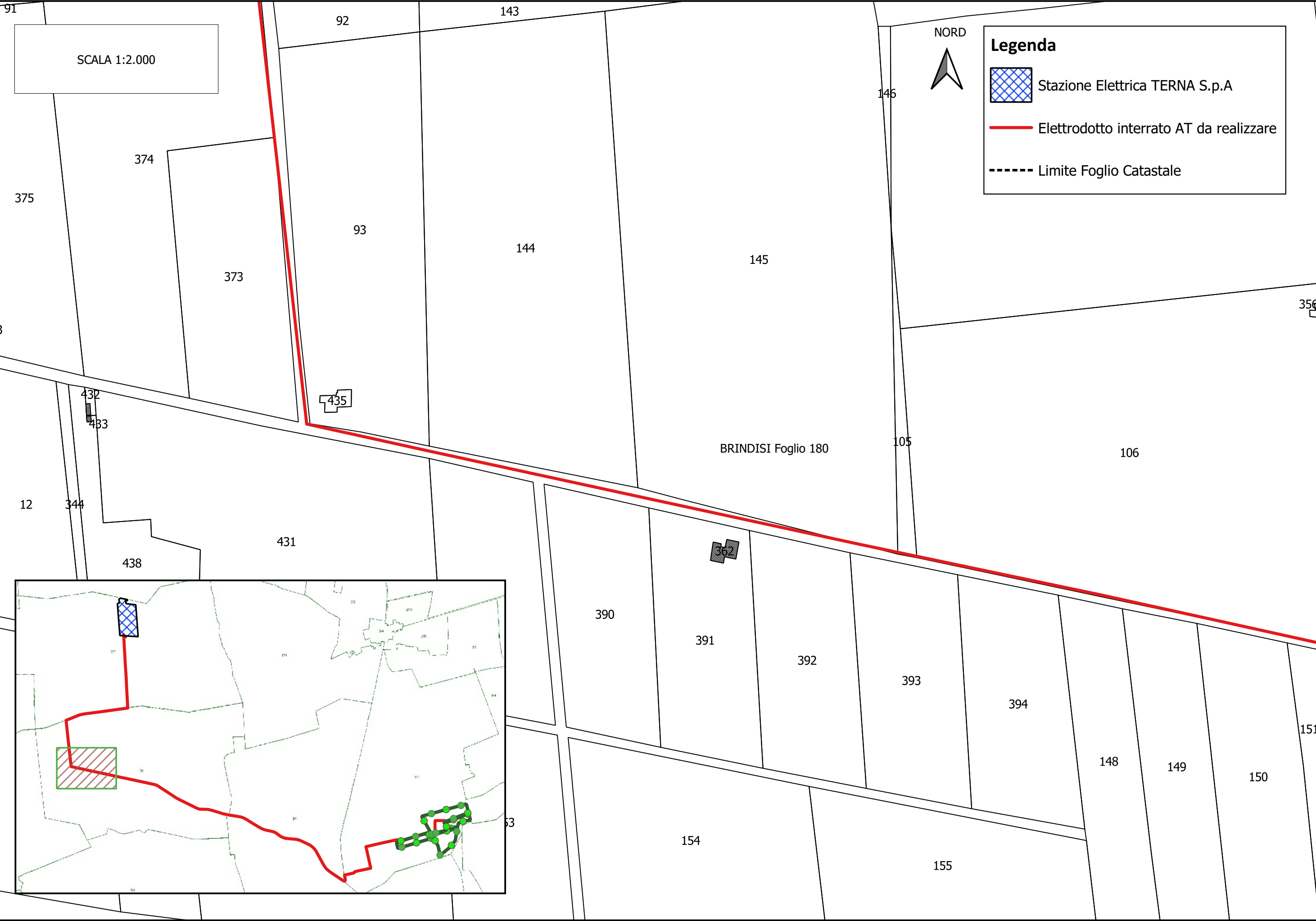
BRINDISI Foglio 180



Legenda

-  Stazione Elettrica TERNA S.p.A
-  Elettrodotto interrato AT da realizzare
-  Limite Foglio Catastale








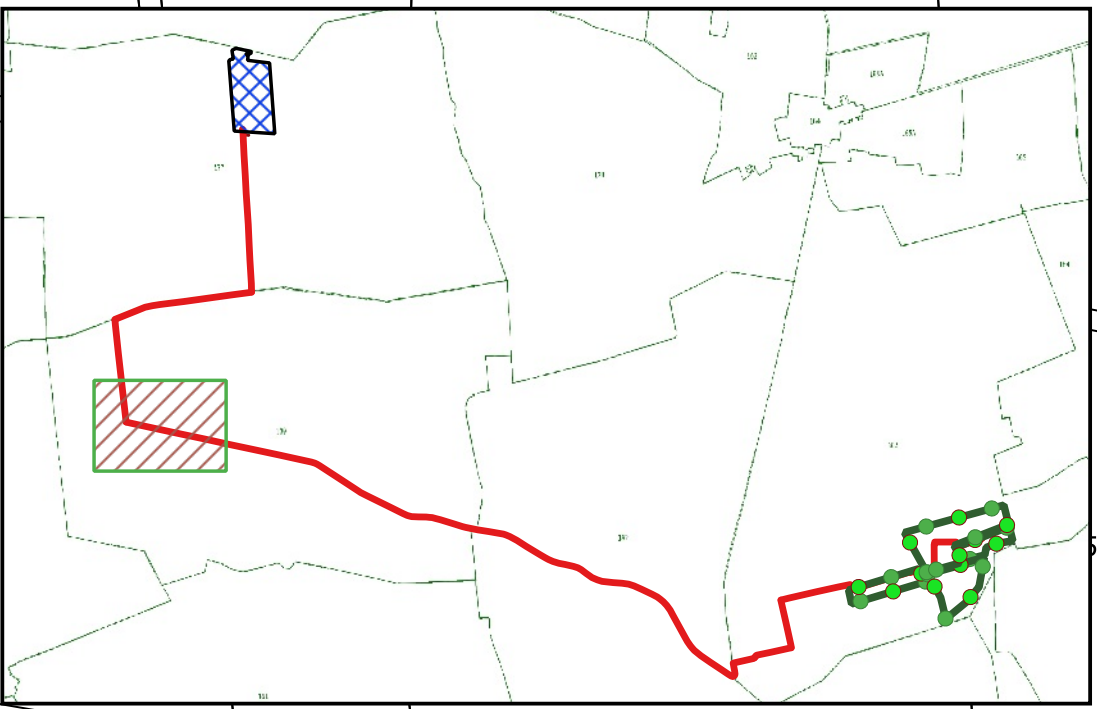
SCALA 1:2.000



Legenda

-  Stazione Elettrica TERNA S.p.A
-  Elettrodotto interrato AT da realizzare
-  Limite Foglio Catastale

BRINDISI Foglio 180



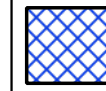
SCALA 1:2.000

NORD



352

Legenda



Stazione Elettrica TERNA S.p.A



Elettrodotto interrato AT da realizzare



Limite Foglio Catastale

106

423

219

9

35

54

251

304

33

BRINDISI Foglio 180

301

151

303

150

42
247

302

300

248

249

18

34

241

250

240

239

408

36

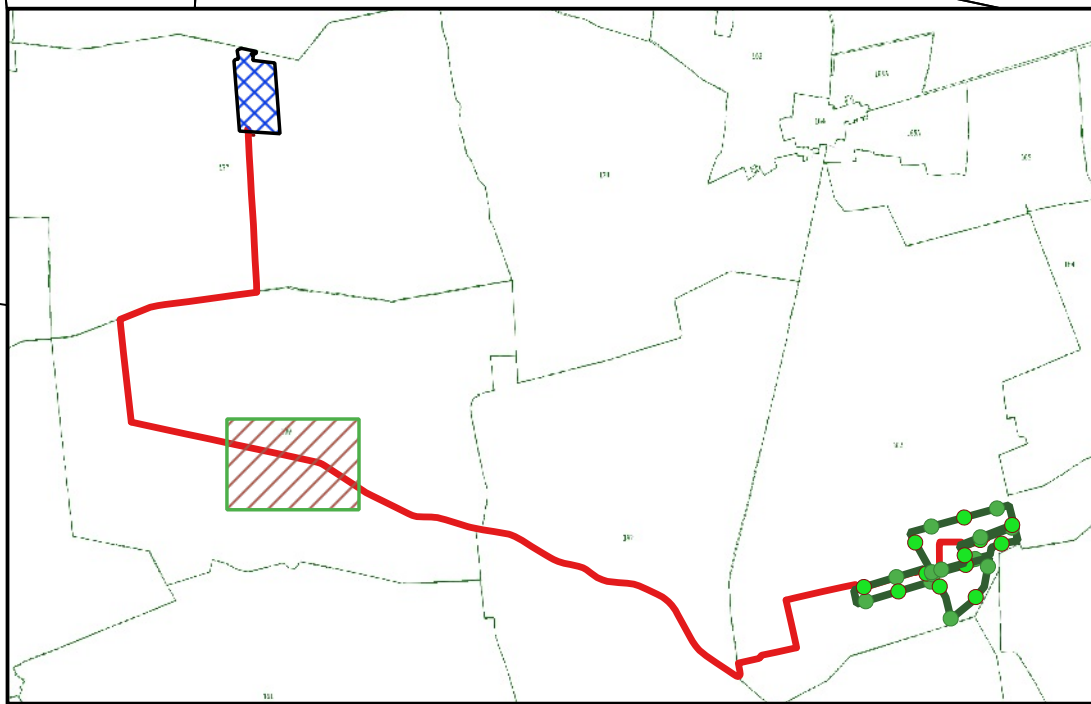
410

238

412

237

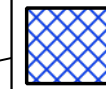
237



SCALA 1:2.000

NORD

Legenda



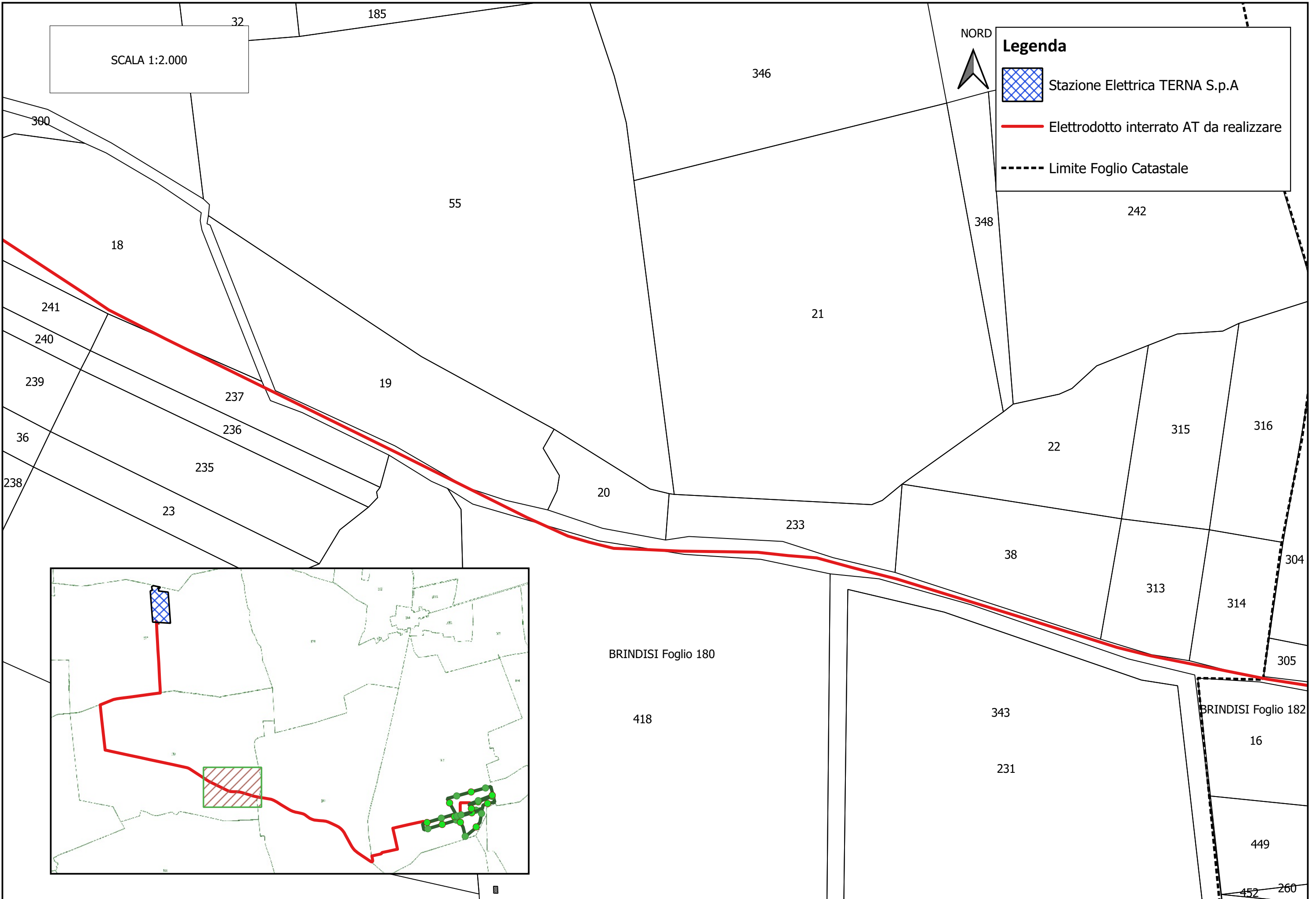
Stazione Elettrica TERNA S.p.A

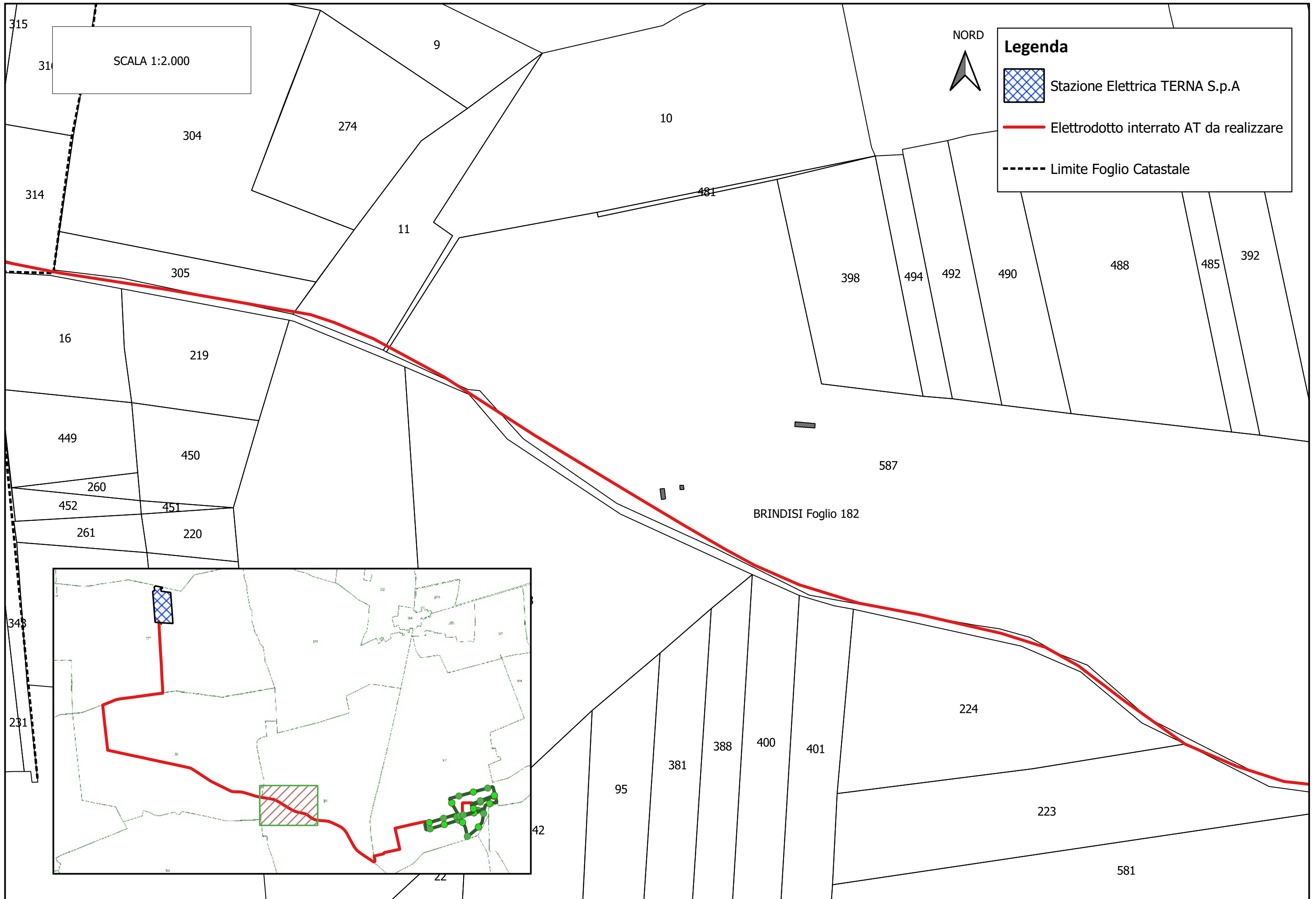


Elettrodotto interrato AT da realizzare



Limite Foglio Catastale



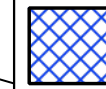


SCALA 1:2.000

587

NORD

Legenda



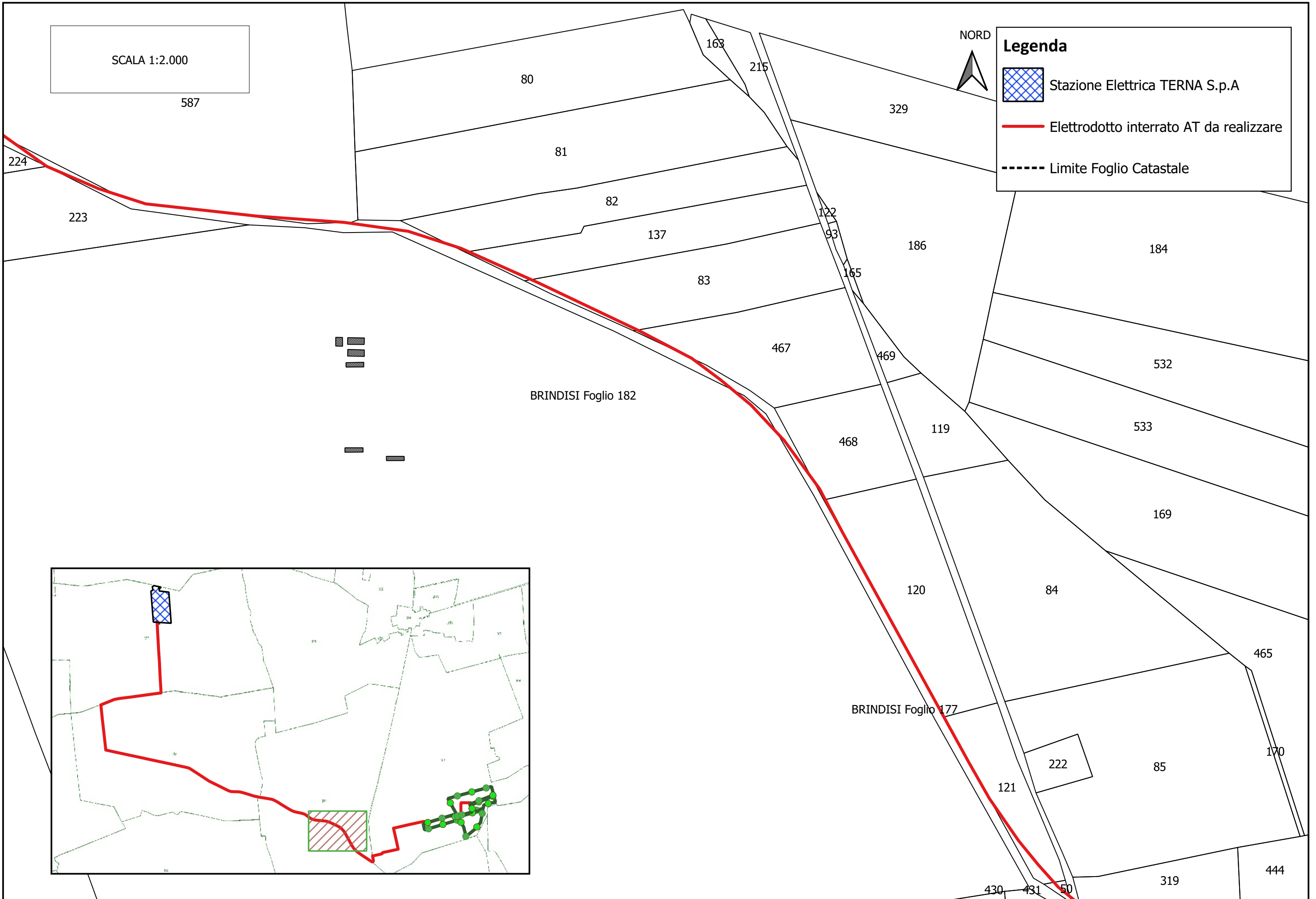
Stazione Elettrica TERNA S.p.A



Elettrodotto interrato AT da realizzare



Limite Foglio Catastale



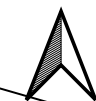
BRINDISI Foglio 182

BRINDISI Foglio 177




SCALA 1:2.000

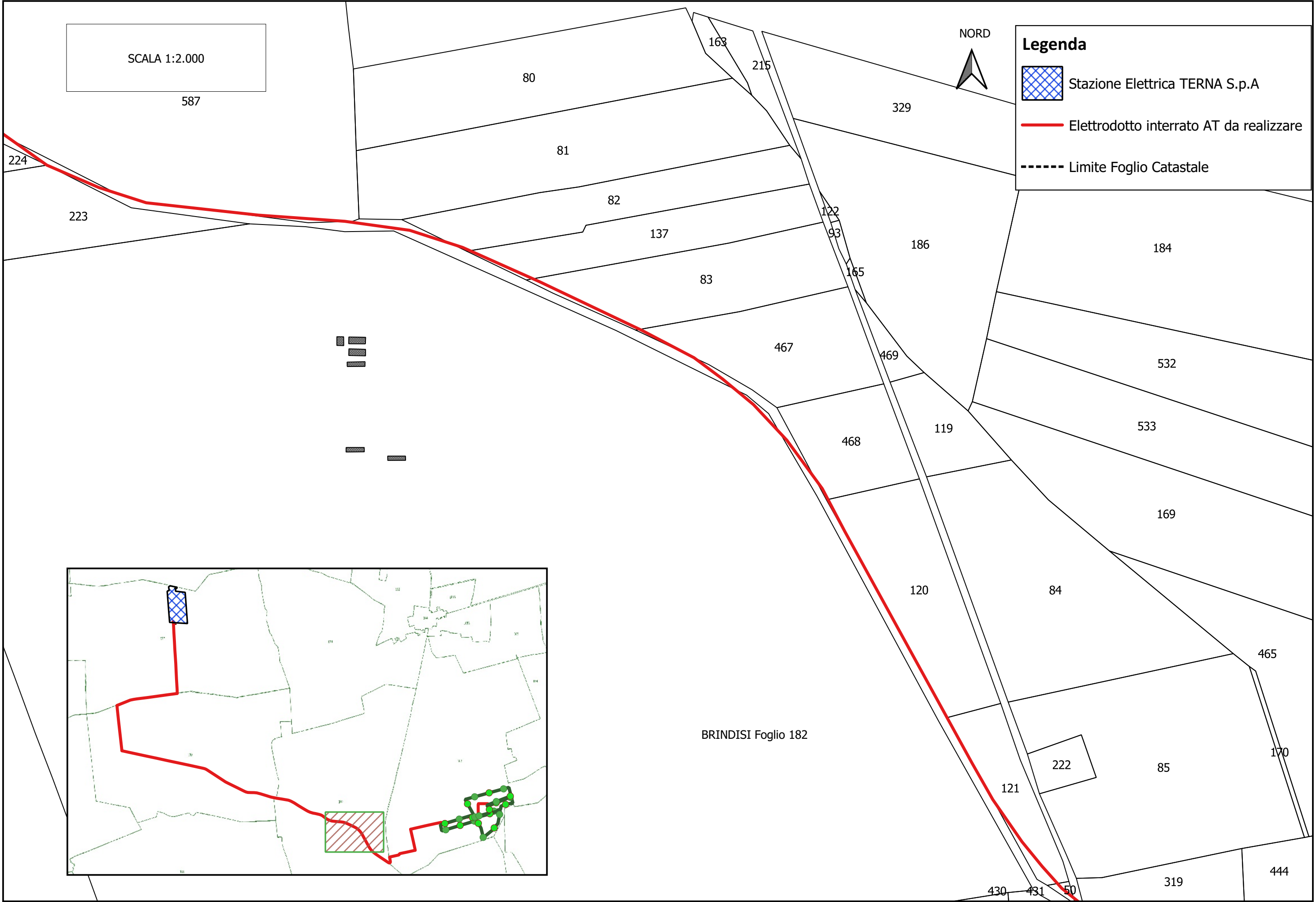
587

NORD

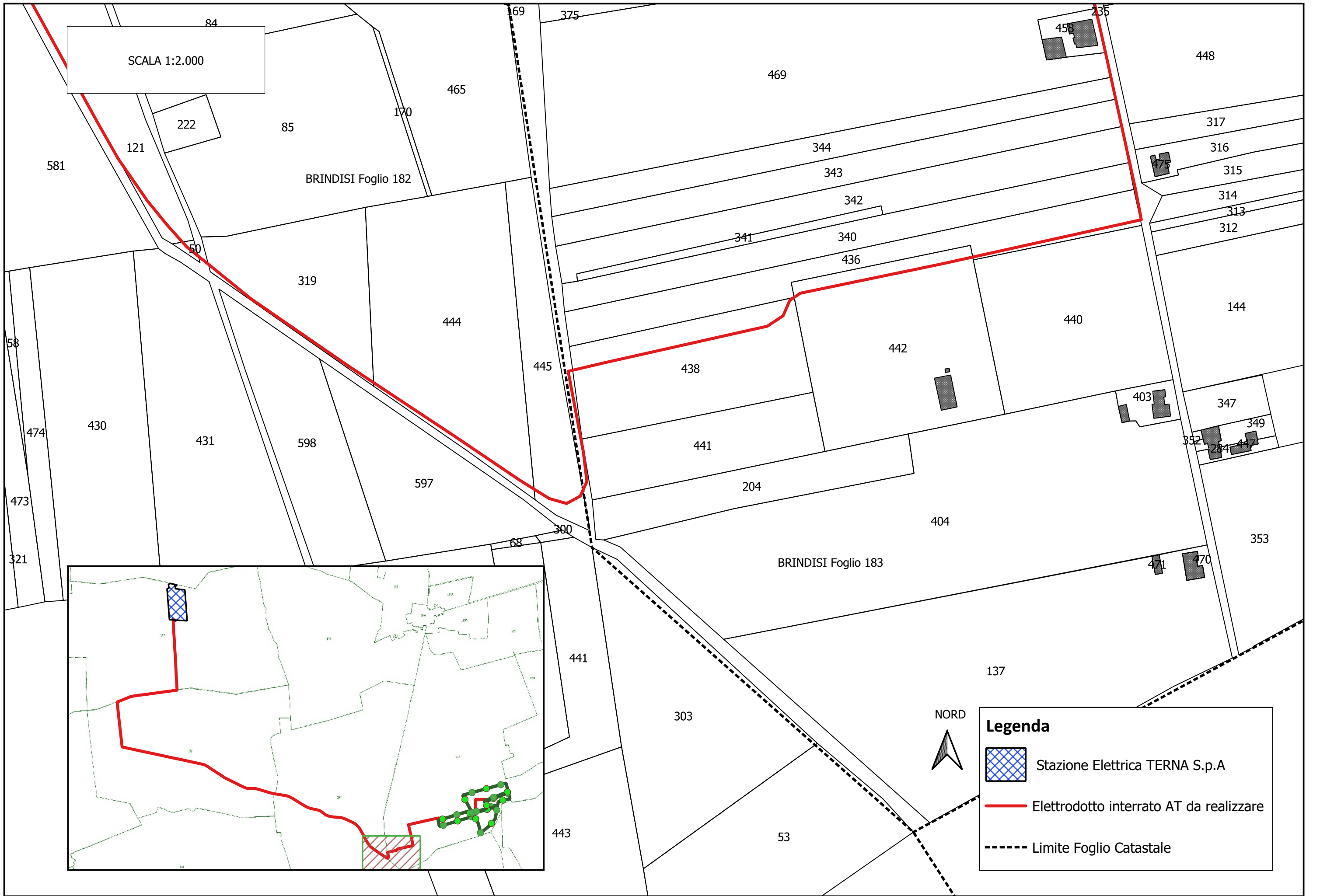


Legenda

-  Stazione Elettrica TERNA S.p.A
-  Elettrodotto interrato AT da realizzare
-  Limite Foglio Catastale

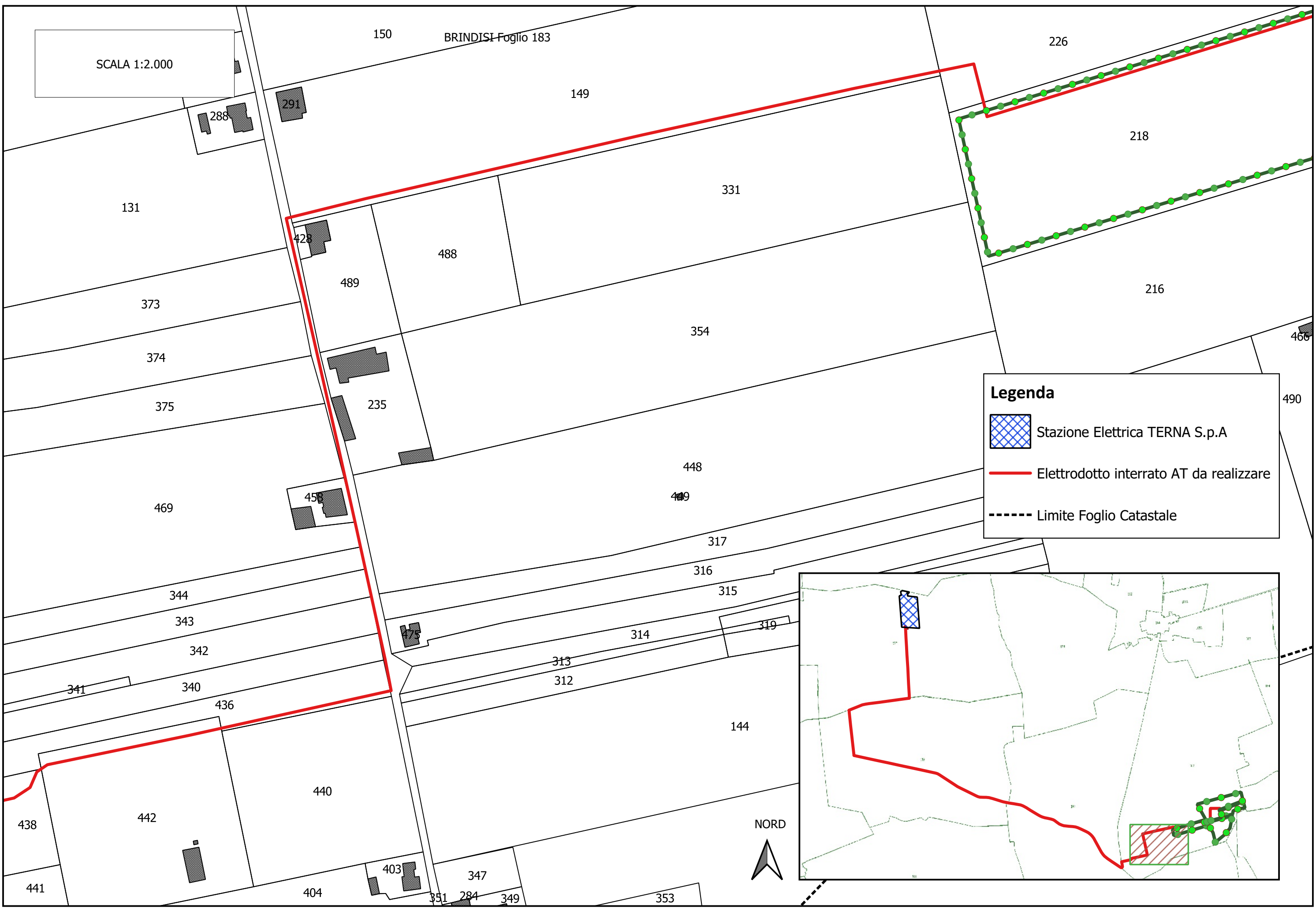


BRINDISI Foglio 182

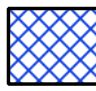




SCALA 1:2.000

BRINDISI Foglio 183



Legenda

-  Stazione Elettrica TERNA S.p.A
-  Elettrodotto interrato AT da realizzare
-  Limite Foglio Catastale

