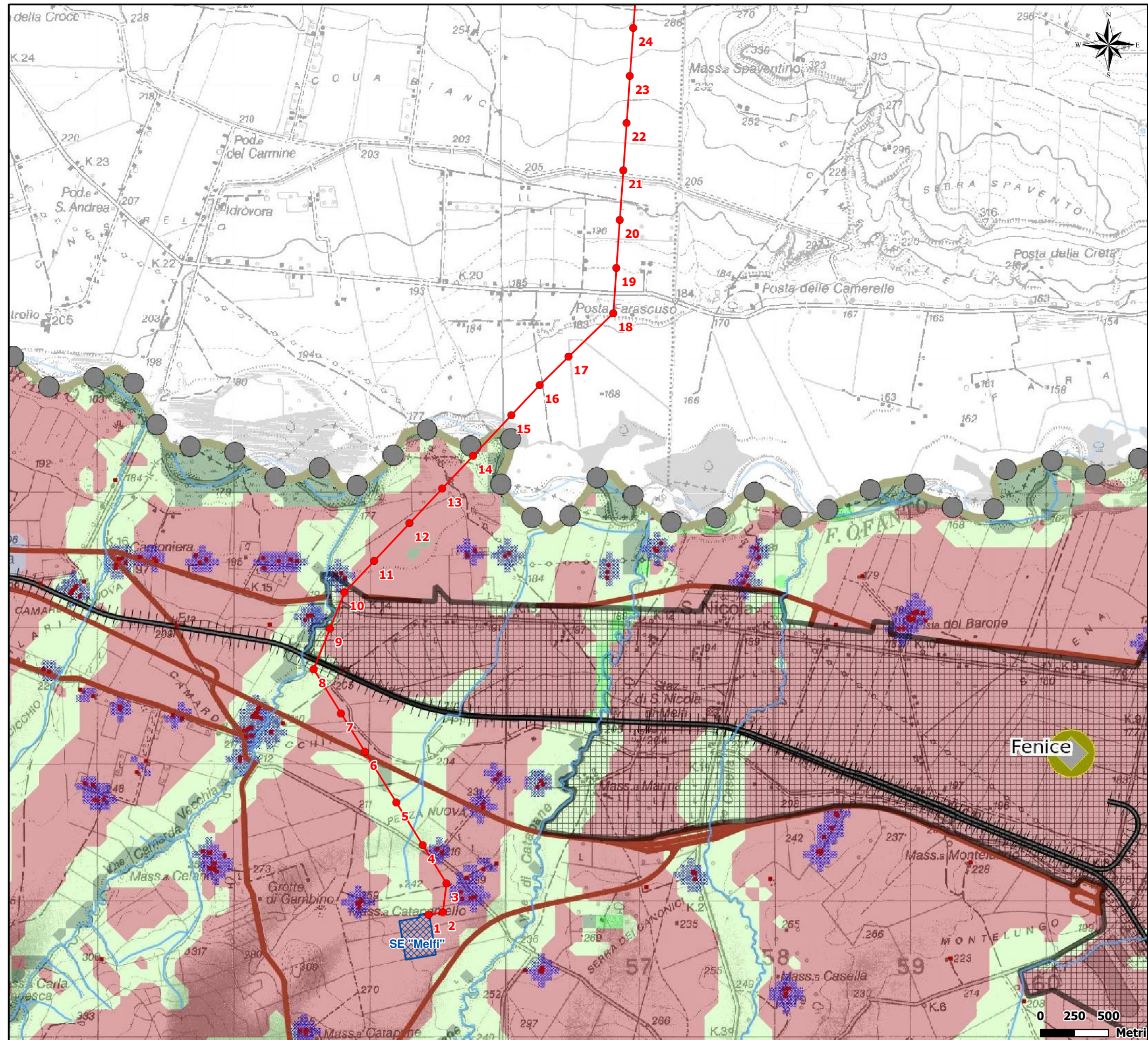






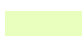
Figura 2.2.5.1d Estratto Regimi di intervento - PSP Provincia di Potenza




LEGENDA



-  Elettrodotto AT 150 kV "Melfi-Ascoli Satriano" in progetto
-  Stazione Elettrica esistente

Regimi della conservazione

-  C1
-  C2
-  C3

Regimi del nuovo impianto

-  NI1

-  Aree produttive
-  Confine regionale

