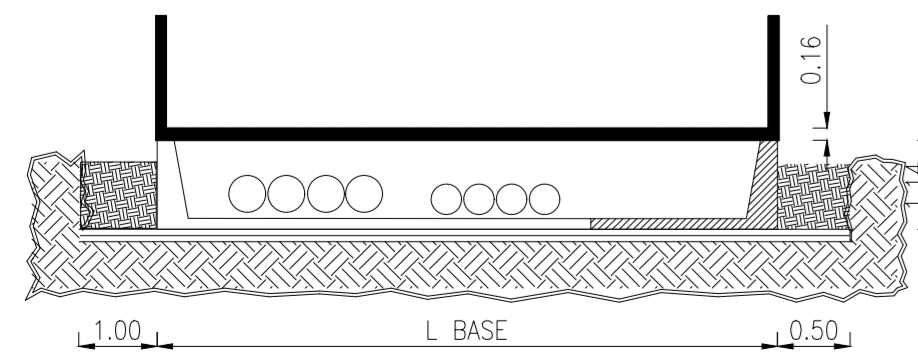
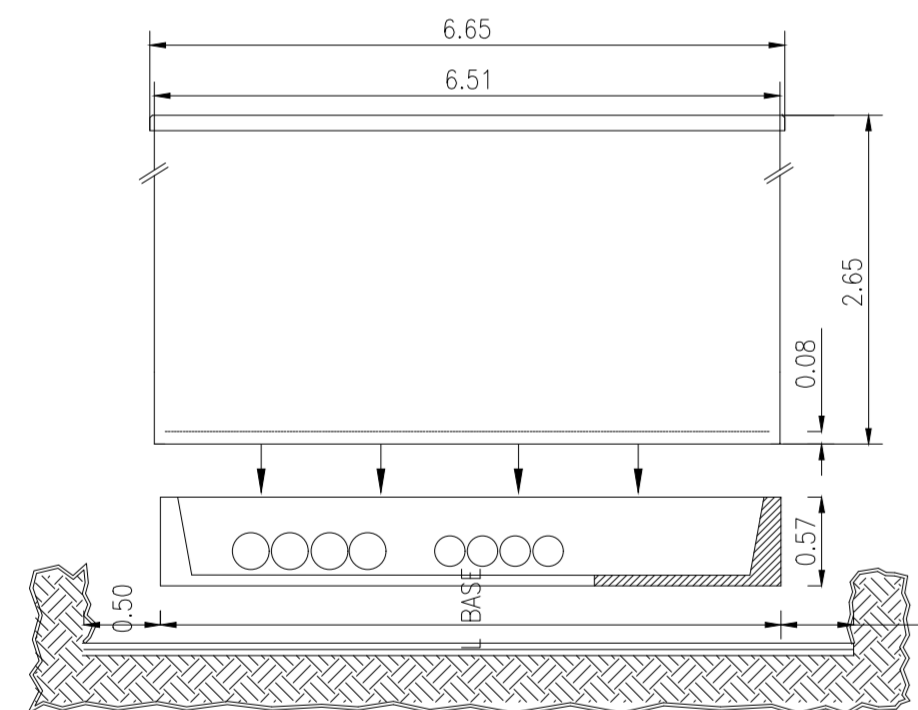
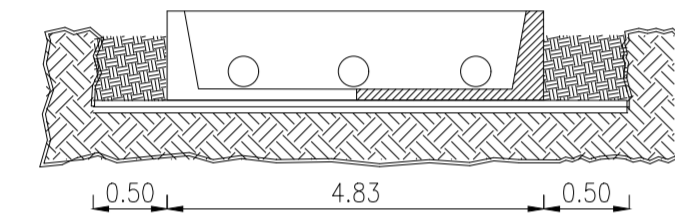
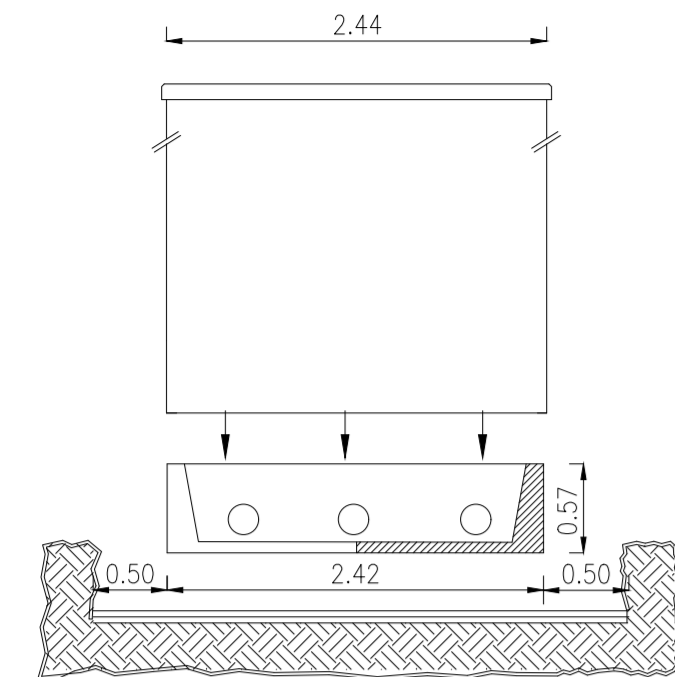
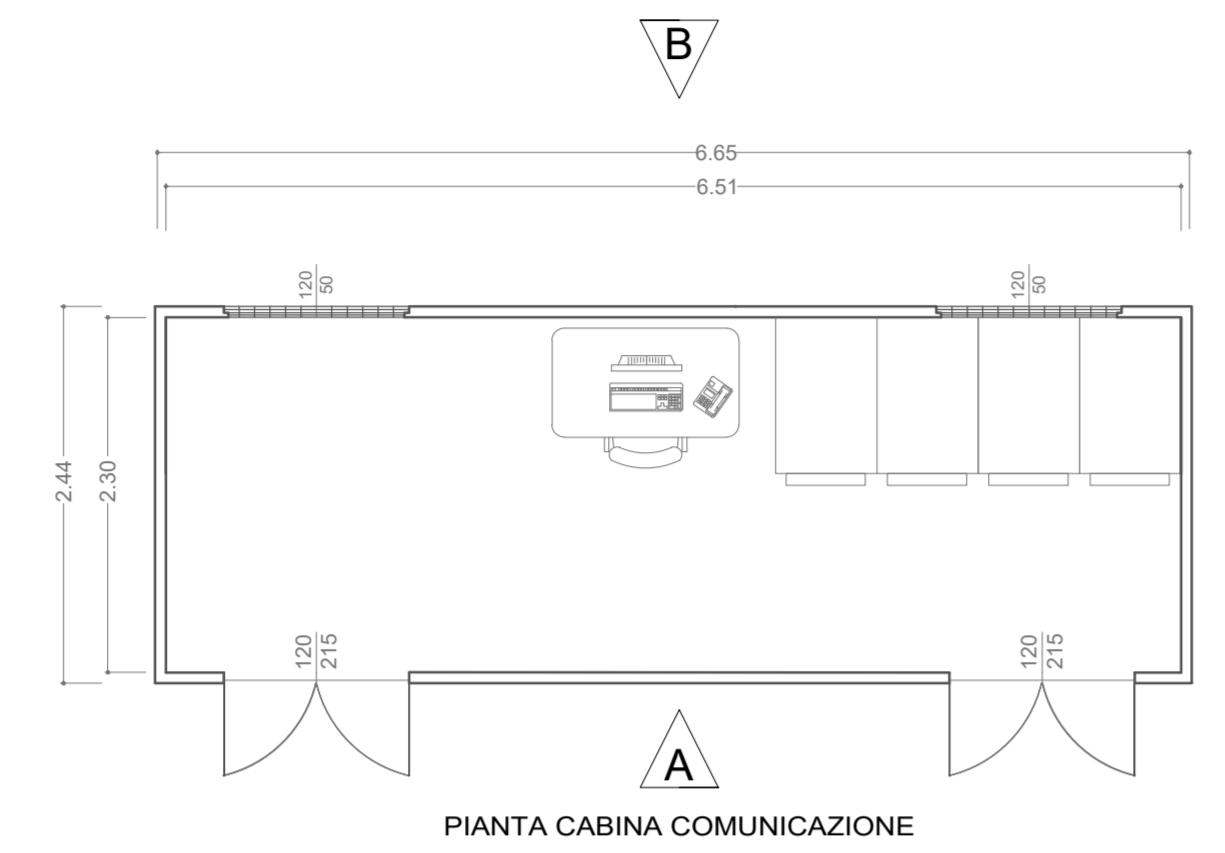


SISTEMA DI POSA DELLA CABINA

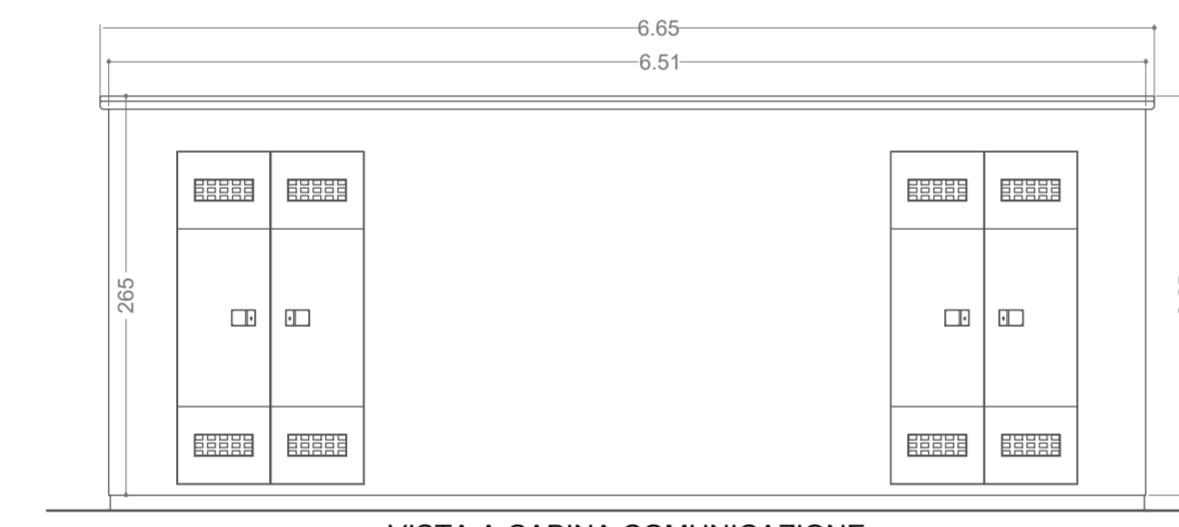


PARTICOLARE LOCALE CONTROLLO - IMPIANTO

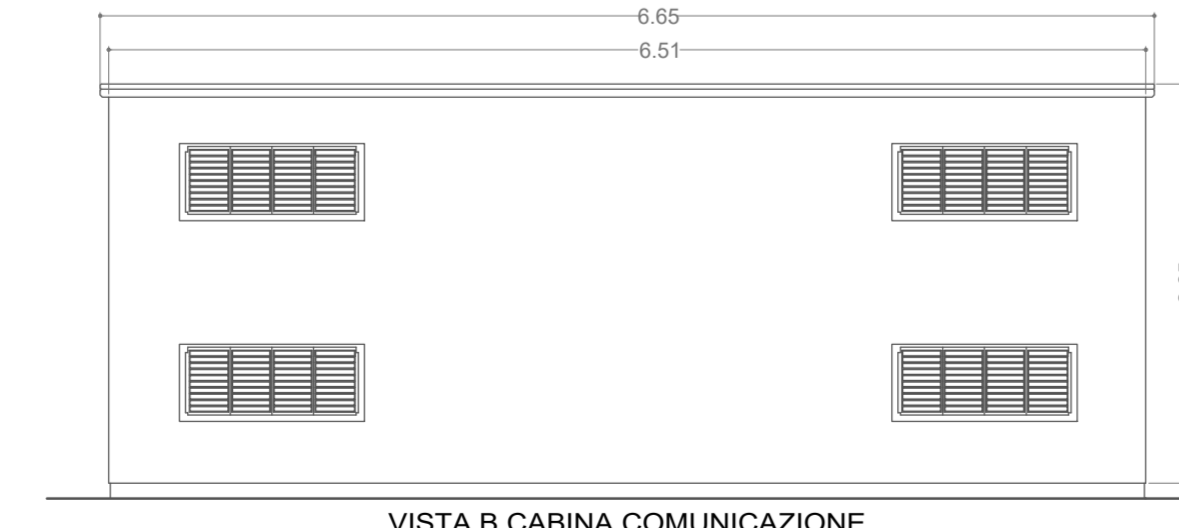
LOCALE COMUNICAZIONE



PIANTA CABINA COMUNICAZIONE

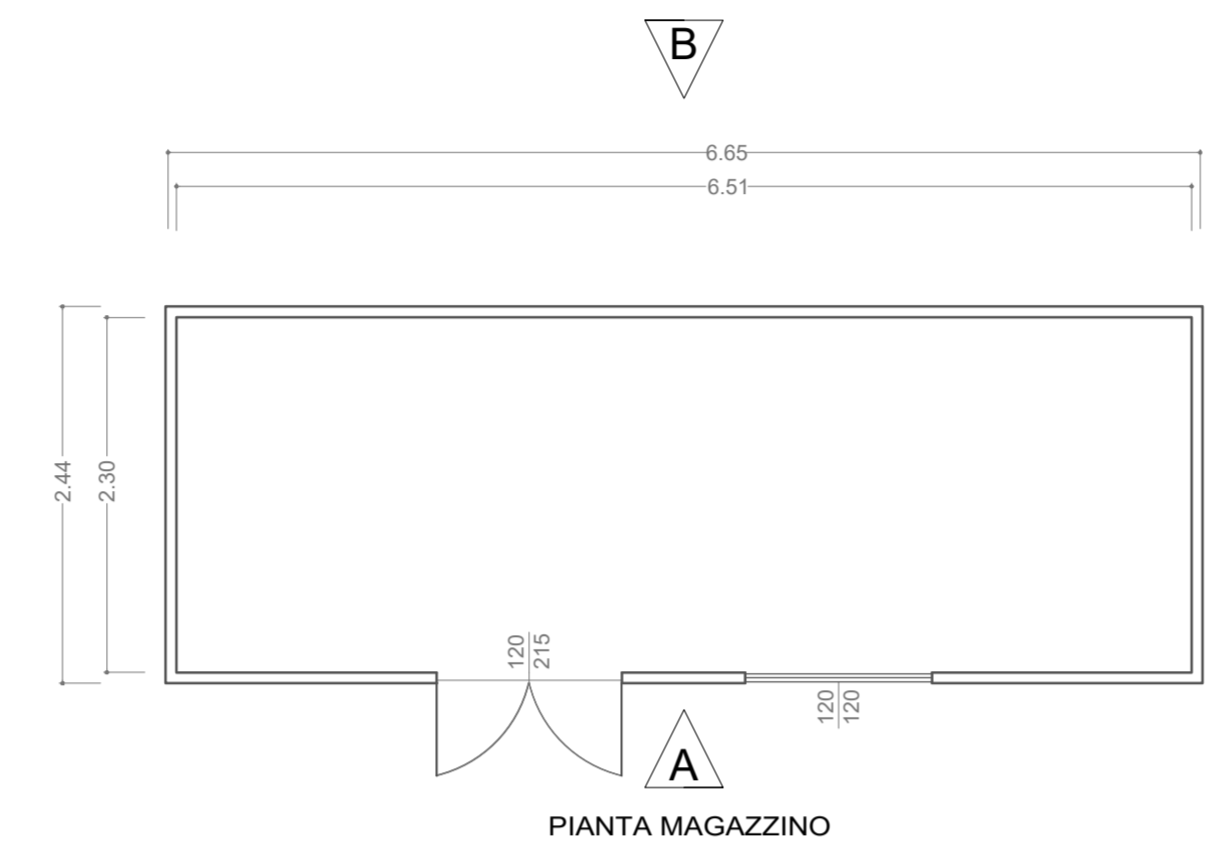


VISTA A CABINA COMUNICAZIONE

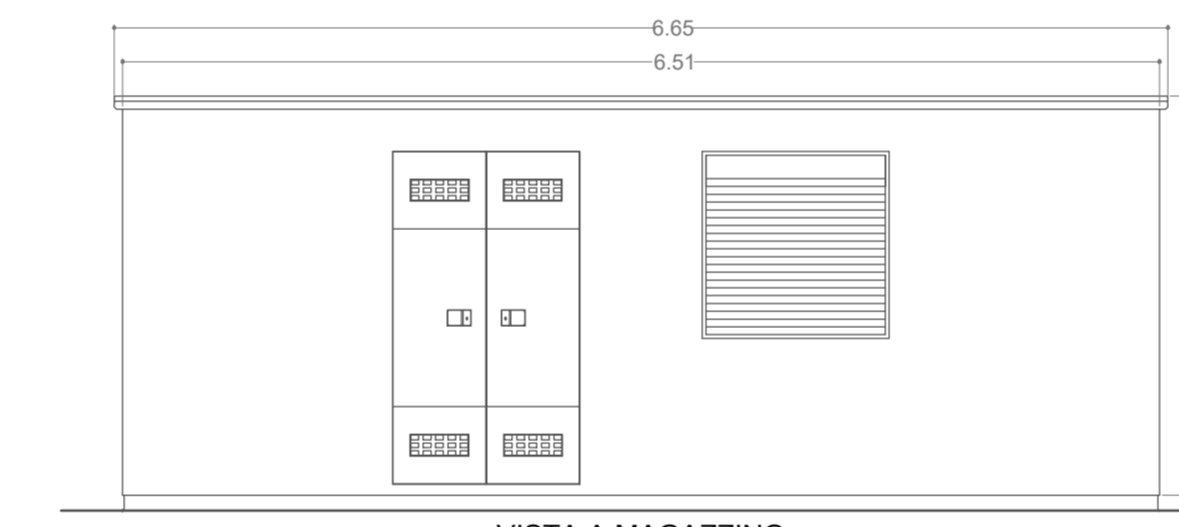


VISTA B CABINA COMUNICAZIONE

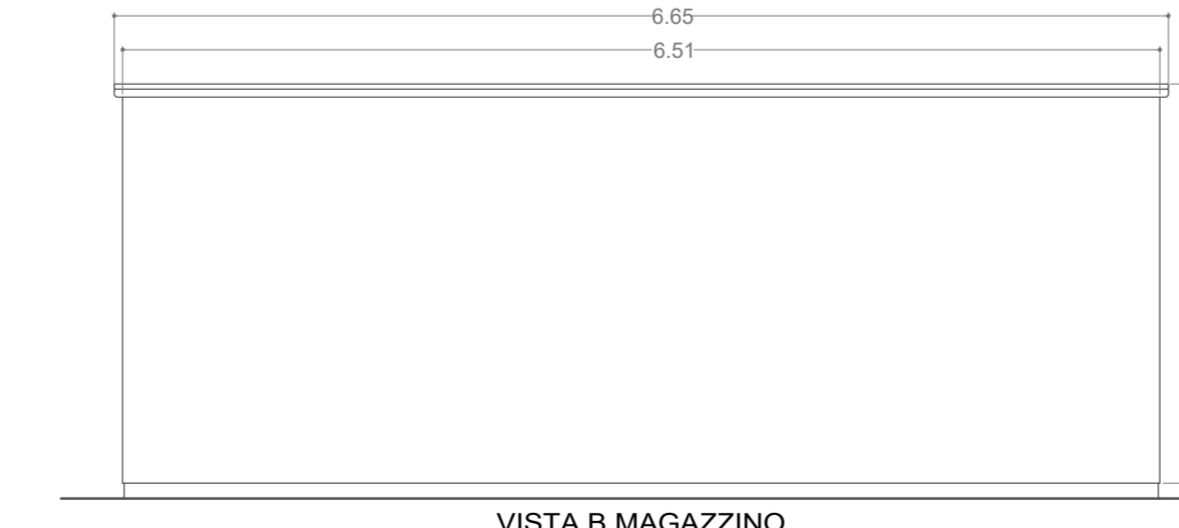
MAGAZZINO



PIANTA MAGAZZINO

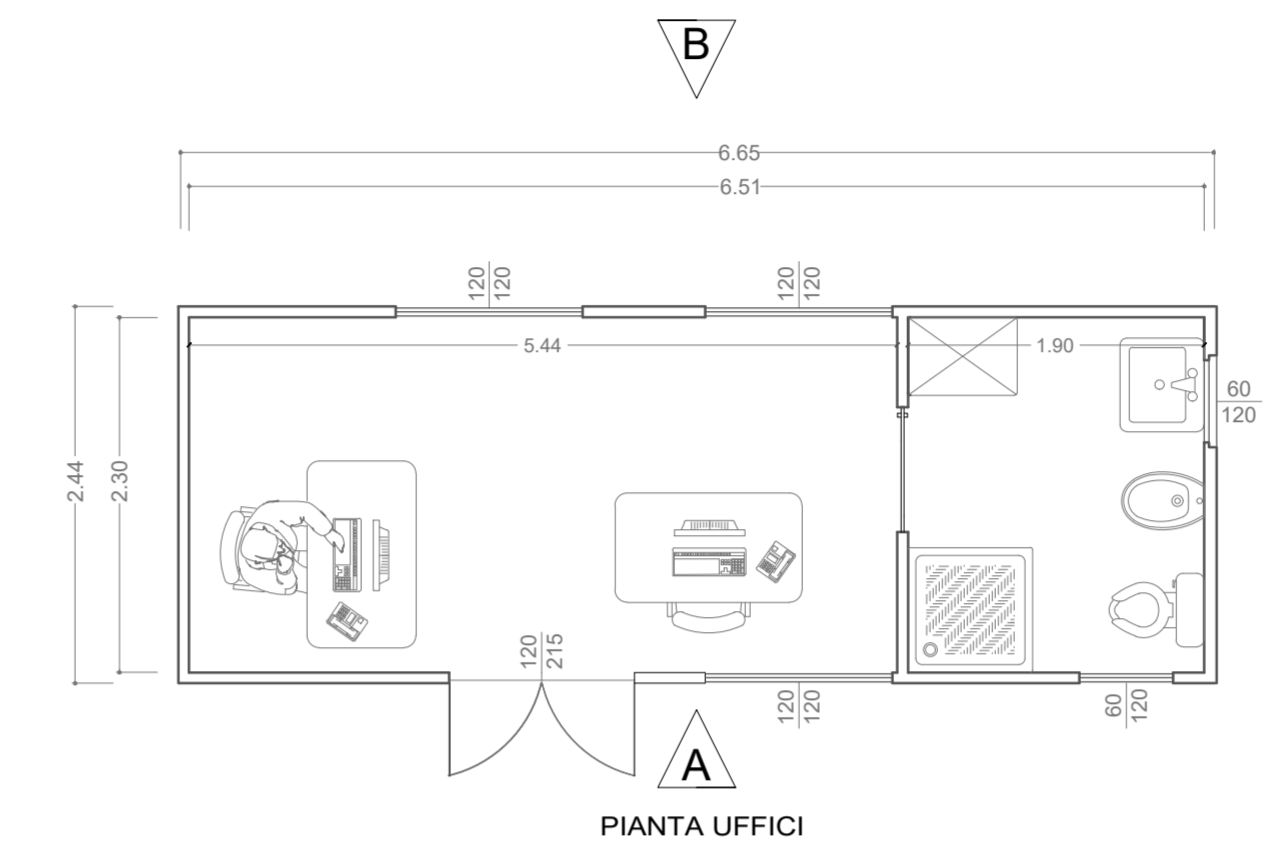


VISTA A MAGAZZINO

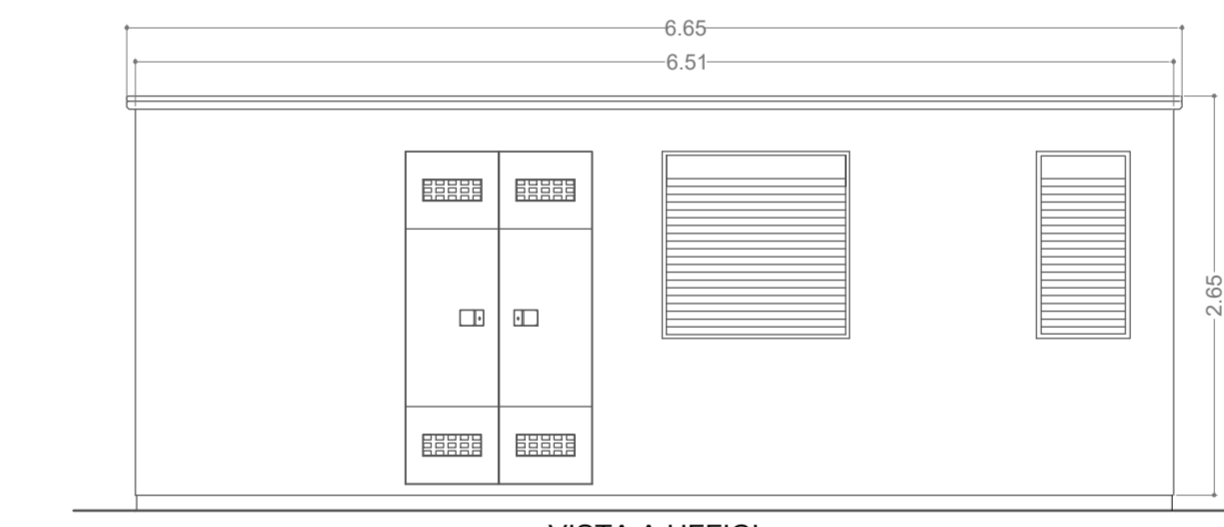


VISTA B MAGAZZINO

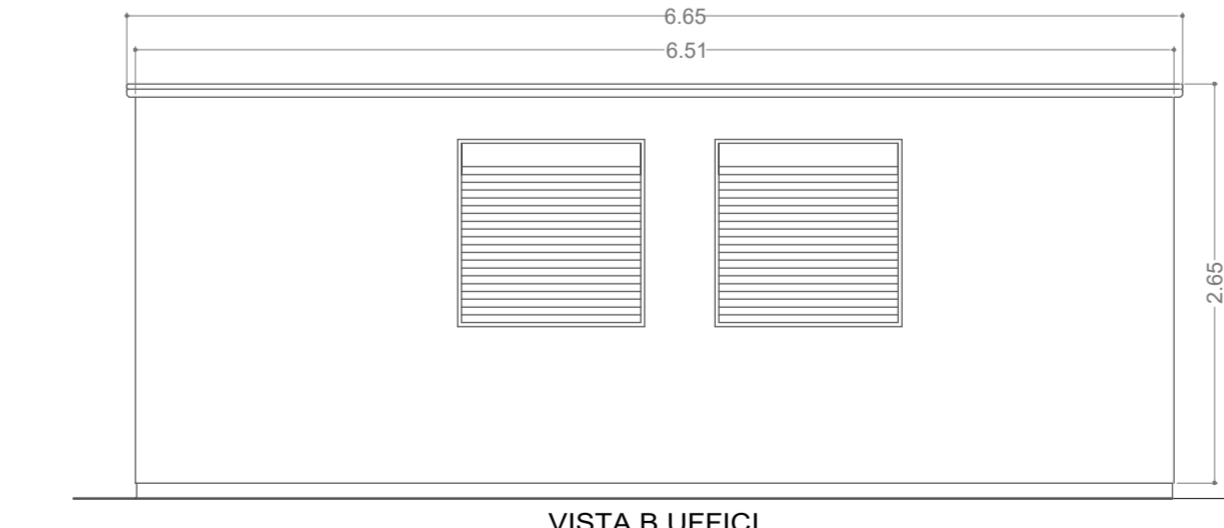
UFFICIO



PIANTA UFFICI

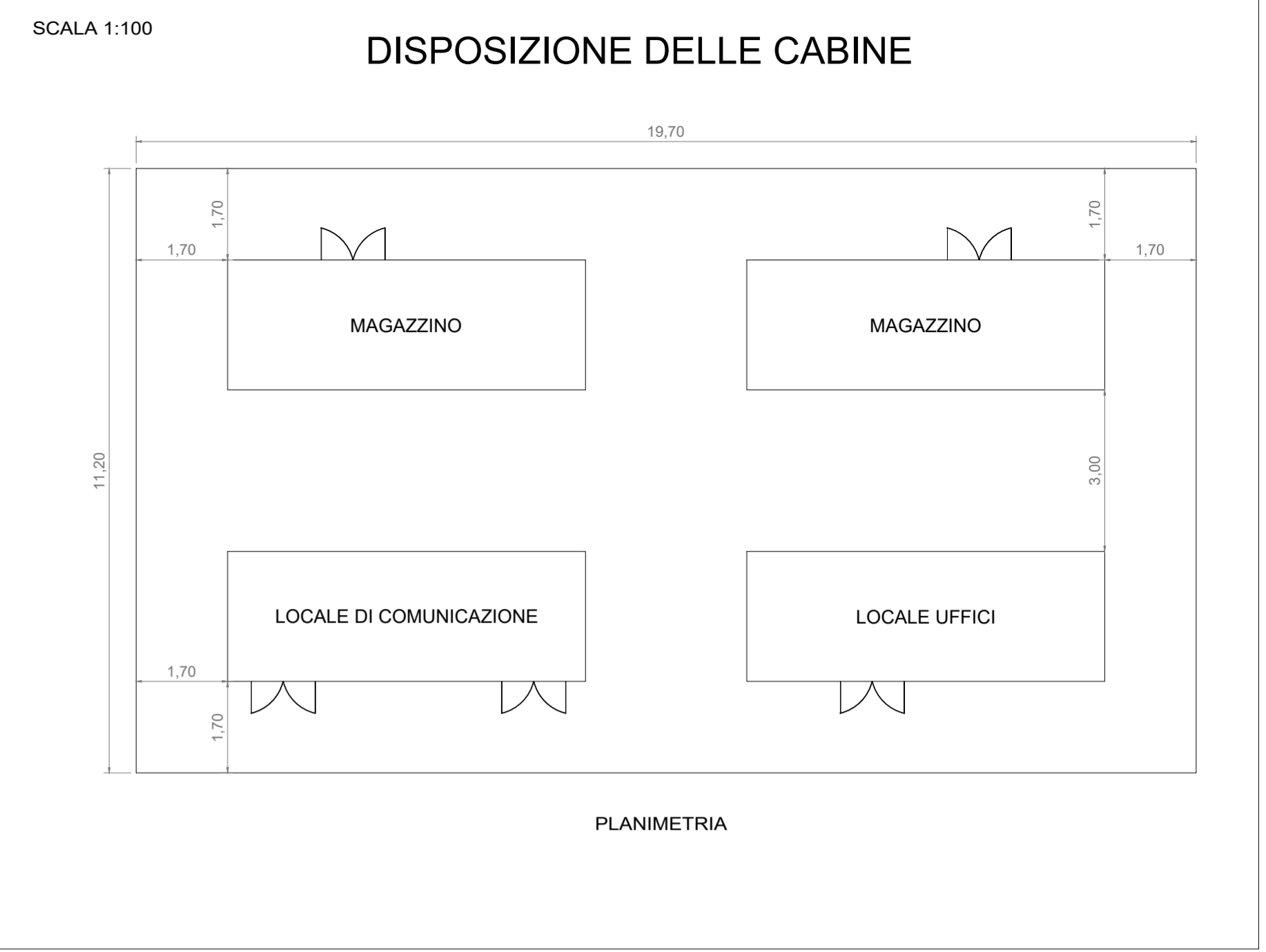


VISTA A UFFICI



VISTA B UFFICI

DISPOSIZIONE DELLE CABINE



PLANIMETRIA



REGIONE SICILIA  
CITTA' METROPOLITANA DI PALERMO

PROGETTO: Località Impianto  
COMUNI DI MONREALE, ROCCAMENA, CORLEONE (PA)  
CONTRADE ARCIVOCALE, GIANGROSSO, CASTELLANA, PONTE, STICCA, GAMBERI,  
CAPPARINI, GALARDO, PETRULLA, GIAMMARIA

Località Connessione  
COMUNE DI MONREALE (PA) CONTRADA AQUILA

Oggetto: **PROGETTO DEFINITIVO**  
Realizzazione impianto agrivoltaico denominato "S&P 12" con  
potenza di picco 367.572,00 kWp e potenza nominale 300.000 kW

CODICE ELABORATO:	PROPRONENTE:	TIPOLOGIA DOCUMENTO:	PROGRESSIVO:	REV:	DATA:
SP12EPD029_00-SetP_12-CMCU-	SP12	EPD	029	00	25/11/2022

ELABORATO: SP12EPD029\_00-SetP\_12-CMCU-  
\_Particolare\_locale\_consegna\_misura\_controllo\_e\_utente

TAV: EPD029  
SCALA: 1:50

PROGETTISTI:  
Ing. Sapienza Angelo

Ing. Rizzante Vincenzo

SPAZIO RISERVATO PER LE APPROVAZIONI

SOCIETA': S & P 12 S.R.L.  
SICILIA E PROGRESSO  
sede legale: Corso dei Mille 312, 90047 Partinico (PA)  
C.F.: 06974410828 tel.: 0919865917- fax: 0918902855  
email: sviluppoept12@gmail.com  
pec: sviluppoept12@pec.it

