

IMPIANTO FOTOVOLTAICO **EG GEMMA** E OPERE CONNESSE

POTENZA IMPIANTO 44,7 MWp in AC e 57 MWp in DC -
COMUNE DI PROCENO (VT)

Proponente

EG GEMMA S.R.L.

VIA DEI PELLEGRINI 22 · 20122 MILANO (MI) · P.IVA: 11490920961 · PEC: eggemma@pec.it

Progettazione

REGRAN S.r.l. – Contrada Quaglio n. 26 – 97013 Comiso – P.IVA 01359480884

Coordinamento progettuale

PSEM 4.0 S.r.l

località Campomorto snc - Montalto di Castro (VT)01014 · P.IVA: 02356590568 · email: psem4.0@psem.it 3280258021



Titolo Elaborato

ALL_U_Schede Tecniche

LIVELLO PROGETTAZIONE	FILENAME	RIFERIMENTO	DATA	SCALA
definitivo	ALL_U		07/05/2021	/

Revisioni

REV.	DATA APPROVATO	DESCRIZIONE	ESEGUITO	VERIFICATO
01	16/03/2022	- R	PSEM4.0	ENF



COMUNE DI PROCENO (VT)
REGIONE LAZIO



SG3125HV-MV-30/ New SG3400HV-MV-30

Turnkey Station for 1500 Vdc System MV Transformer Integrated



HIGH YIELD

- Advanced three-level technology, max. inverter efficiency 99%
- Effective cooling, full power operation at 50 °C (SG3125HV-MV-30)

SAVED INVESTMENT

- Low transportation and installation cost due to 20-foot container design
- DC 1500V system, low system cost
- Integrated MV transformer, switchgear, and LV auxiliary power supply
- Q at night function optional

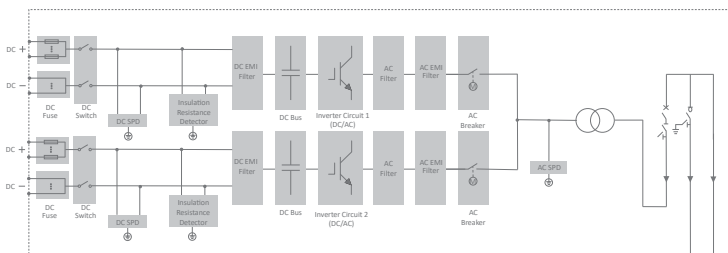
SMART O&M

- Integrated zone monitoring and MV parameters monitoring function for online analysis and trouble shooting
- Modular design, easy for maintenance
- Convenient external touch screen

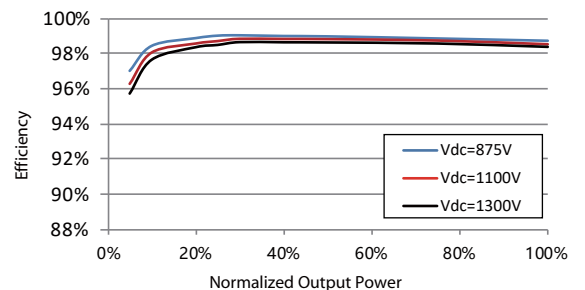
GRID SUPPORT

- Compliance with standards: IEC 61727, IEC 62116
- Low/High voltage ride through (L/HVRT)
- Active & reactive power control and power ramp rate control

CIRCUIT DIAGRAM



EFFICIENCY CURVE (SG3125HV-30)



Type designation	SG3125HV-MV-30	SG3400HV-MV-30
Input (DC)		
Max. PV input voltage	1500 V	
Min. PV input voltage / Startup input voltage	875 V / 915 V	
MPP voltage range	875 – 1300 V	
No. of independent MPP inputs	2	
No. of DC inputs	16 / 18 / 22 / 24 / 28 (max. 24 for floating system)	
Max. PV input current	3997 A	
Max. DC short-circuit current	10000 A	
PV array configuration	Negative grounding or floating	
Output (AC)		
AC output power	3125 kVA @ 50 °C / 3437 kVA @ 45 °C	3437 kVA @ 45 °C
Max. inverter output current	3308 A	
AC voltage range	20 kV – 35 kV	
Nominal grid frequency / Grid frequency range	50 Hz / 45 – 55 Hz, 60 Hz / 55 – 65 Hz	
Harmonic (THD)	< 3 % (at nominal power)	
Power factor at nominal power / Adjustable power factor	> 0.99 / 0.8 leading – 0.8 lagging	
Feed-in phases / AC connection	3 / 3-PE	
Efficiency		
Inverter max. efficiency	99.0%	
Inverter European efficiency	98.7%	
Transformer		
Transformer rated power	3125 kVA	3437 kVA
Transformer max. power	3437 kVA	
LV / MV voltage	0.6 kV / (20 – 35) kV	
Transformer vector	Dy11	
Transformer cooling type	ONAN (Oil-natural, air-natural)	
Oil type	Mineral oil (PCB free) or degradable oil on request	
Protection & Function		
DC input protection	Load break switch + fuse	
Inverter output protection	Circuit breaker	
AC MV output protection	Circuit breaker	
Surge protection	DC Type I + II / AC Type II	
Grid monitoring / Ground fault monitoring	Yes / Yes	
Insulation monitoring	Yes	
Overheat protection	Yes	
Q at night function	Optional	
General Data		
Dimensions (W*H*D)	6058 * 2896 * 2438 mm	
Weight	15 T	
Degree of protection	Inverter: IP55 (optional: IP65) / Others: IP54	
Auxiliary power supply	5 kVA (optional: max. 40 kVA)	
Operating ambient temperature range	-35 to 60 °C (> 50 °C derating)	-35 to 60 °C (> 45 °C derating)
Allowable relative humidity range	0 – 100 %	
Cooling method	Temperature controlled forced air cooling	
Max. operating altitude	1000 m (standard) / > 1000 m (optional)	
Display	Touch screen	
Communication	Standard: RS485, Ethernet; Optional: optical fiber	
Compliance	CE, IEC 62109, IEC 61727, IEC 62116	
Grid support	Q at night (Optional), L/HVRT, active & reactive power control and power ramp rate control	



ST3440KWH(L)-3150UD-MV/ ST3727KWH(L)-3450UD-MV Preliminary

Energy Storage System



HIGH INTEGRATION

- Highly integrated energy storage system for easy transportation and O&M
- Advanced integration technology ensures optimal system performance and lower cost

SAFE AND RELIABLE

- DC electric circuit safety management includes fast breaking and anti-arc protection
- Multi-state monitoring and linkage actions ensure battery system safety

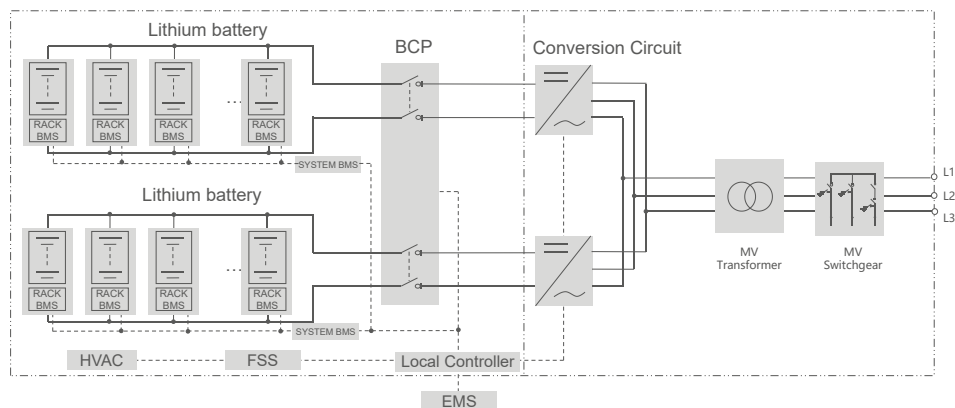
EFFICIENT AND FLEXIBLE

- Intelligent cell-level temperature control ensures higher efficiency and longer battery cycle life
- Modular design supports parallel connection and easy system expansion

SMART AND FRIENDLY

- Integrated local controller enables single point of communication interface
- Fast state monitoring and faults record enables pre-alarm and faults location

CIRCUIT DIAGRAM



ST3440KWH(L)-3150UD-MV/ST3727KWH(L)-3450UD-MV

System Type	ST3440KWH(L)-3150UD-MV	ST3727KWH(L)-3450UD-MV
Battery Data		
Cell type	LFP 280Ah	
Configuration of system	384S10P	416S10P
Battery capacity (BOL)	3,440 kWh	3,727 kWh
Battery voltage range	1,036.8 ~ 1,401.6 V	1123.2 ~ 1,497.6 V
BMS communication interfaces	RS485, Ethernet	
BMS communication protocols	Modbus RTU, Modbus TCP	
AC Data		
Nominal AC power	3,150 kVA	3,450 kVA
Max. THD of current	< 3 % (at nominal power)	
DC component	< 0.5 % (at nominal power)	
Grid voltage range	10 ~ 35 kV	
Power factor	> 0.99 (at nominal power)	
Adjustable power factor	1.0 leading ~ 1.0 lagging	
Nominal grid frequency	50 / 60 Hz	
Grid frequency range	45 ~ 55 Hz / 55 ~ 65 Hz	
Isolation method	Transformer	
Transformer		
Transformer rated power	3,150 kVA	3,450 kVA
LV/MV voltage	0.63 kV / 10 ~ 35 kV	0.69 kV / 10 ~ 35 kV
Transformer vector	Dy11	
Transformer cooling type	ONAN (Oil Natural Air Natural)	
Oil type	Mineral oil (PCB free) or degradable oil on request	
General Data		
Dimensions of PCS unit (W * H * D)	6,058 * 2,896 * 2,438 mm / 238.5" * 114.0" * 96.0"	
Dimensions of battery unit (W * H * D)	12,192 * 2,896 * 2,438 mm / 480.0" * 114.0" * 96.0"	
Weight of PCS unit (with MV transformer)	16.0 T / 35274 lbs	
Weight of battery unit (with / without battery)	43.5T 95,901.1 lbs / 15.5 T 34,171.7 lbs	45.5T 100,310.3 lbs / 15.5 T 34,171.7 lbs
Degree of protection	IP54	
Operating temperature range	-30 to 50 °C / -22 to 122 °F (> 45 °C / 113 °F derating)	
Relative humidity	0 ~ 95 % (non-condensing)	
Max. working altitude	1,000 m (standard) > 1,000 m (optional)	
Cooling concept of battery chamber	Heating, Ventilation and Air Conditioning	
Cooling concept of PCS chamber	Temperature controlled forced air cooling	
Fire suppression system of battery unit	Novec1230 extinguishment system	
Communication interfaces	RS485, Ethernet	
Communication protocols	Modbus RTU, Modbus TCP, IEC 104	
Compliance	CE, IEC 62477-1, IEC 61000-6-2, IEC61000-6-4, IEC62619	



TR Bifacial 560-580 Watt

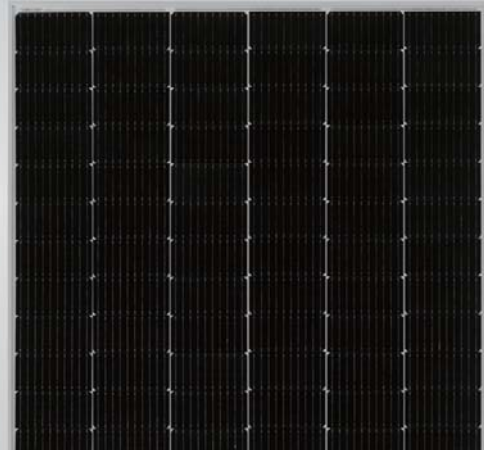
Tiling Ribbon (TR) Technology

Positive power tolerance of 0~+3%

ISO9001:2015, ISO14001:2015, ISO45001:2018 certified factory

IEC61215, IEC61730 certified product

TIGER Pro



KEY FEATURES



TR technology + Half Cell

TR technology with Half cell aims to eliminate the cell gap to increase module efficiency (bi-facial up to 21.21%)



MBB instead of 5BB

MBB technology decreases the distance between bus bars and finger grid line which is benefit to power increase.



Higher lifetime Power Yield

2% first year degradation,
0.45% linear degradation



Best Warranty

12 year product warranty,
30 year linear power warranty



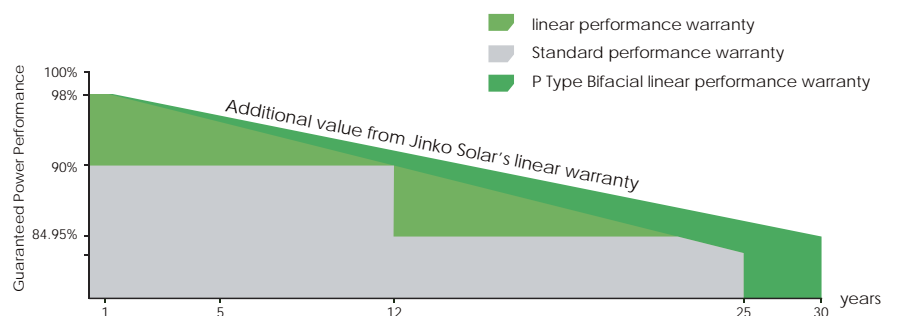
Strengthened Mechanical Support

5400 Pa snow load, 2400 Pa wind load

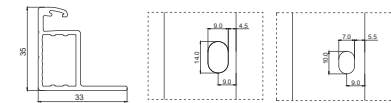
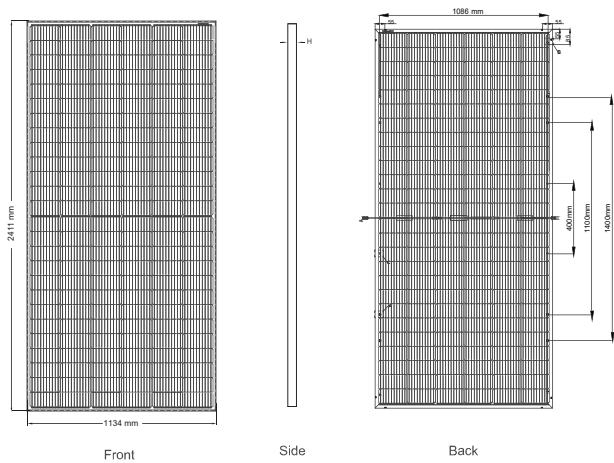


LINEAR PERFORMANCE WARRANTY

12 Year Product Warranty • 30 Year Linear Power Warranty
0.45% Annual Degradation Over 30 years



Engineering Drawings



Length: ± 2 mm
Width: ± 2 mm
Height: ± 1 mm
Row Pitch: ± 2 mm

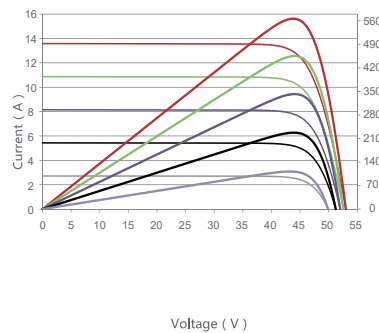
Packaging Configuration

(Two pallets = One stack)

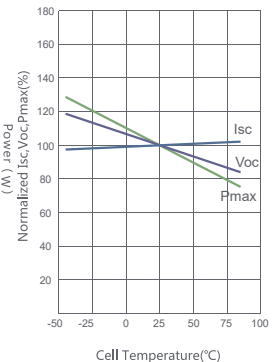
31pcs/pallets, 62pcs/stack, 496pcs/ 40'HQ Container

Electrical Performance & Temperature Dependence

Current-Voltage & Power-Voltage Curves (565W)



Temperature Dependence of I_{sc} , V_{oc} , P_{max}



Mechanical Characteristics

Cell Type	P type Mono-crystalline
No. of cells	156 (2×78)
Dimensions	2411×1134×35mm (94.92×44.65×1.38 inch)
Weight	31.1 kg (68.6 lbs)
Front Glass	3.2mm, Anti-Reflection Coating, High Transmission, Low Iron, Tempered Glass
Frame	Anodized Aluminium Alloy
Junction Box	IP68 Rated
Output Cables	TUV 1×4.0mm ² (+): 290mm, (-): 145mm or Customized Length

SPECIFICATIONS

Module Type	JKM560M-7RL4-TV		JKM565M-7RL4-TV		JKM570M-7RL4-TV		JKM575M-7RL4-TV		JKM580M-7RL4-TV	
	STC	NOCT	STC	NOCT	STC	NOCT	STC	NOCT	STC	NOCT
Maximum Power (Pmax)	560Wp	417Wp	565Wp	420Wp	570Wp	424Wp	575Wp	428Wp	580Wp	432Wp
Maximum Power Voltage (Vmp)	43.65V	40.63V	43.77V	40.74V	43.89V	40.85V	44.00V	40.96V	44.11V	41.07V
Maximum Power Current (Imp)	12.83A	10.26A	12.91A	10.32A	12.99A	10.38A	13.07A	10.44A	13.15A	10.51A
Open-circuit Voltage (Voc)	52.85V	49.88V	52.97V	50.00V	53.09V	50.11V	53.20V	50.21V	53.31V	50.32V
Short-circuit Current (Isc)	13.51A	10.91A	13.59A	10.98A	13.67A	11.04A	13.75A	11.11A	13.83A	11.17A
Module Efficiency STC (%)	20.48%		20.67%		20.85%		21.03%		21.21%	
Operating Temperature(°C)	-40°C~+85°C									
Maximum system voltage	1500VDC (IEC)									
Maximum series fuse rating	25A									
Power tolerance	0~+3%									
Temperature coefficients of Pmax	-0.35%/°C									
Temperature coefficients of Voc	-0.28%/°C									
Temperature coefficients of Isc	0.048%/°C									
Nominal operating cell temperature (NOCT)	45±2°C									
Refer. Bifacial Factor	70±5%									

BIFACIAL OUTPUT-REAR SIDE POWER GAIN

		5%		15%		25%	
		Maximum Power (Pmax)	Module Efficiency STC (%)	Maximum Power (Pmax)	Module Efficiency STC (%)	Maximum Power (Pmax)	Module Efficiency STC (%)
		588Wp	21.51%	593Wp	21.70%	599Wp	21.89%
		604Wp	22.08%	609Wp	22.27%	615Wp	22.46%
		644Wp	23.55%	650Wp	23.76%	656Wp	23.98%
		661Wp	24.19%	667Wp	24.40%	673Wp	24.61%
		700Wp	25.60%	706Wp	25.83%	713Wp	26.06%
		719Wp	26.29%	725Wp	26.52%	731Wp	26.75%

* STC: Irradiance 1000W/m² Cell Temperature 25°C

AM=1.5

NOCT: Irradiance 800W/m² Ambient Temperature 20°C

AM=1.5

Wind Speed 1m/s