



COMUNE DI GRAVINA DI PUGLIA

PROVINCIA DI BARI



REGIONE PUGLIA



REALIZZAZIONE DI UN IMPIANTO SOLARE FOTOVOLTAICO CONNESSO ALLA RETE DELLA POTENZA DI PICCO PARI A 19.093,36 kW E POTENZA IN IMMISSIONE PARI A 15.400,00 kW, COLLEGATO AD UN PIANO AGRONOMICO PER L'UTILIZZO A SCOPI AGRICOLI DELL'AREA

Denominazione Impianto:

IMPIANTO GRAVINA 1

Ubicazione:

Comune di Gravina di Puglia (BA)
Contrada Recupa Piana dei Ricci

**ELABORATO
3.12-PDRT**

COMPONENTI PRINCIPALI – DATA SHEET

Cod. Doc.: 3.12-PDRT

**COMET ENERGY
POWER**

Project - Commissioning – Consulting

Municipiul Bucuresti Sector 1
Str. HRISOVULUI Nr. 2-4, Parter, Camera 1, Bl. 2, Ap. 88
RO41889165

Scala: --

PROGETTO

Data:
02/01/2021

PRELIMINARE



DEFINITIVO



AS BUILT



Heliosophia concept S.r.l.

Strada Berthelot, 21
Bucharest
030167 ROMANIA

Tecnici e Professionisti:

*Ing. Luca Ferracuti Pompa:
Iscritto al n.A344 dell'Albo degli Ingegneri
della Provincia di Fermo*

Revisione	Data	Descrizione	Redatto	Approvato	Autorizzato
01	02/01/2021	Progetto Definitivo	F.P.L.	F.P.L.	F.P.L.
02					
03					
04					

Il Tecnico:

Dott. Ing. Luca Ferracuti Pompa

(Iscritto al n. A344, dell'Albo dell'Ordine degli Ingegneri della Provincia di Fermo)



Il Richiedente:

GRAVINA S.r.l.

Piazza Walther Von Vogelweide n.8 – 39100 Bolzano (BZ)
P.iva: 03057030219

ELABORATO.: 3.12-PDRT	COMUNE di GRAVINA DI PUGLIA PROVINCIA di BARI	Rev.: 02/21
	<i>PROGETTO DEFINITIVO</i> REALIZZAZIONE DI UN IMPIANTO SOLARE FOTOVOLTAICO DELLA POTENZA DI PICCO PARI A 19.093,36 kWp E POTENZA IN IMMISSIONE PARI A 15.400 kW, COLLEGATO AD UN PIANO AGRONOMICO PER L'UTILIZZO A SCOPI AGRICOLI DELL'AREA	Data: 02/01/21
	COMPONENTI PRINCIPALI DATA SHEET	Pagina 2 di 3

1. OGGETTO

Il Presente documento è redatto quale allegato alla documentazione per l'autorizzazione ai sensi dell'art. 152 D.Lgs 152/2006 relativa ad un impianto fotovoltaico, di potenza nominale e potenza di picco pari a 19.093,36 kWp da realizzare nel Comune di Gravina di Puglia (BA), ai fini della costruzione di un impianto conforme alle vigenti prescrizioni di legge. L'impianto sarà del tipo Grid Connected e l'energia elettrica prodotta sarà riversata completamente in rete, con allaccio in Media Tensione alla Rete Elettrica Nazionale.

Il Produttore e Soggetto Responsabile, è la Gravina S.r.l., la quale dispone dell'autorizzazione all'utilizzo dell'area su cui sorgerà l'impianto in oggetto. La denominazione dell'impianto, prevista nell'iter AUTORIZZATIVO, è "GRAVINA 1".

Allegati:

- Componenti Principali - Data Sheet;

Montegiorgio, li 02/01/2021

In Fede
Il Tecnico
(Dott. Ing. Luca Ferracuti Pompa)

SUN2000-185KTL-H1

Smart String Inverter



9
MPP Trackers



>99.0%
Max. Efficiency



String-level
Management



Smart I-V Curve
Diagnosis Supported



MBUS
Supported



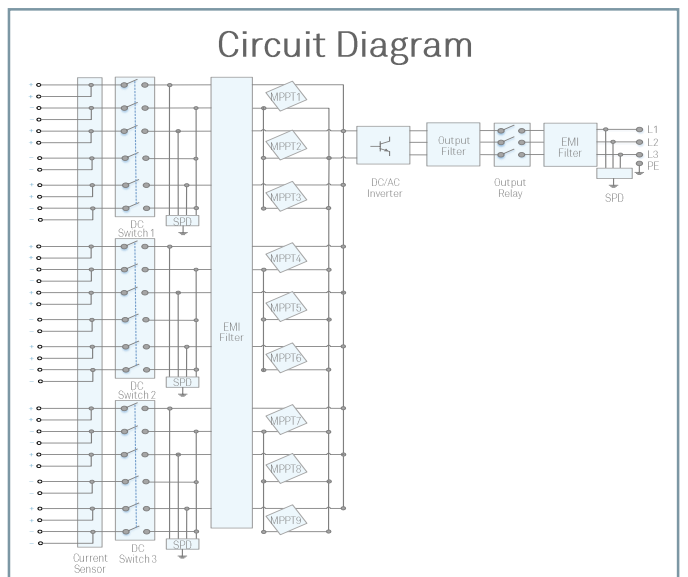
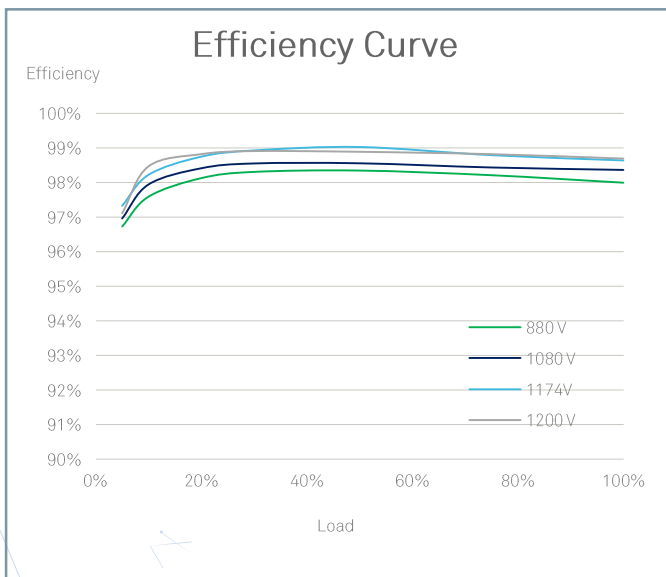
Fuse Free
Design



Surge Arresters for
DC & AC

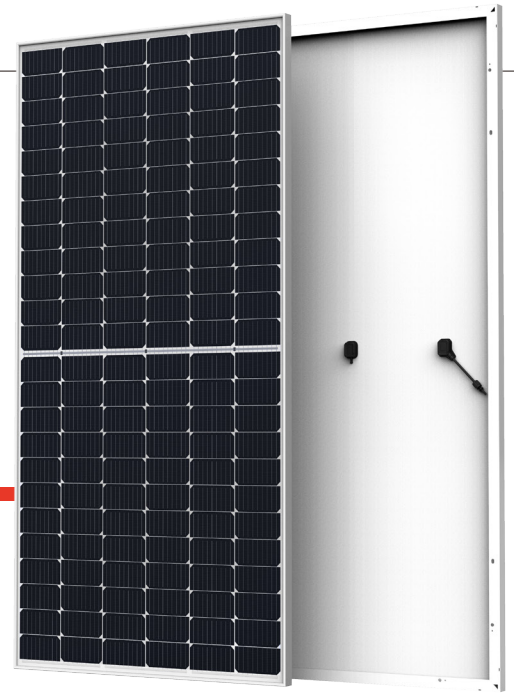


IP66
Protection



Technical Specifications

Efficiency	
Max. Efficiency	99.03%
European Efficiency	98.69%
Input	
Max. Input Voltage	1,500 V
Max. Current per MPPT	26 A
Max. Short Circuit Current per MPPT	40 A
Start Voltage	550 V
MPPT Operating Voltage Range	500 V ~ 1,500 V
Nominal Input Voltage	1,080 V
Number of Inputs	18
Number of MPP Trackers	9
Output	
Nominal AC Active Power	175,000 W @40°C, 168,000 W @45°C, 150,000 W @50°C
Max. AC Apparent Power	185,000 VA
Max. AC Active Power (cosφ=1)	185,000 W
Nominal Output Voltage	800 V, 3W + PE
Rated AC Grid Frequency	50 Hz / 60 Hz
Nominal Output Current	126.3 A @40°C, 121.3 A @45°C, 108.3 A @50°C
Max. Output Current	134.9 A
Adjustable Power Factor Range	0.8 LG ... 0.8 LD
Max. Total Harmonic Distortion	< 3%
Protection	
Input-side Disconnection Device	Yes
Anti-islanding Protection	Yes
AC Overcurrent Protection	Yes
DC Reverse-polarity Protection	Yes
PV-array String Fault Monitoring	Yes
DC Surge Arrester	Type II
AC Surge Arrester	Type II
DC Insulation Resistance Detection	Yes
Residual Current Monitoring Unit	Yes
Communication	
Display	LED Indicators, Bluetooth/WLAN + APP
USB	Yes
MBUS	Yes
RS485	Yes
General	
Dimensions (W x H x D)	1,035 x 700 x 365 mm (40.7 x 27.6 x 14.4 inch)
Weight (with mounting plate)	84 kg (185.2lb.)
Operating Temperature Range	-25°C ~ 60°C (-13°F ~ 140°F)
Cooling Method	Smart Air Cooling
Max. Operating Altitude without Derating	4,000 m (13,123 ft.)
Relative Humidity	0 ~ 100%
DC Connector	Staubli MC4 EVO2
AC Connector	Waterproof Connector + OT/DT Terminal
Protection Degree	IP66
Topology	Transformerless
Standard Compliance (more available upon request)	
Certificate	EN 62109-1/-2, IEC 62109-1/-2, EN 50530, IEC 62116, IEC 60068, IEC 61683
Grid Code	IEC 61727, P.O. 12.3, RD 1699, RD 661, RD 413, RD 1565, RD 1663, UNE 206007-1, UNE 206006



THE
TALLMAX^M
 FRAMED 72 LAYOUT MODULE

72 LAYOUT
 MONOCRYSTALLINE MODULE

430-450W
 POWER OUTPUT RANGE

20.6%
 MAXIMUM EFFICIENCY

0~+5W
 POSITIVE POWER TOLERANCE

PRODUCTS

TSM-DE17M(II)

POWER RANGE

430-450W



High power

- Up to 450W front power and 20.6% module efficiency with half-cut and MBB (Multi Busbar) technology bringing more BOS savings
- Lower resistance of half-cut and good reflection effect of MBB ensure high power



High reliability

- Ensured PID resistance through cell process and module material control
- Resistant to salt, acid and ammonia
- Certified to 5400 Pa positive load and 2400 Pa negative load



High energy generation

- Excellent IAM and low light performance validated by 3rd party with cell process and module material optimization
- Lower temp coefficient (-0.36%) and NMOT bring more energy leading to lower LCOE
- Better anti-shading performance and lower operating temperature

Founded in 1997, Trina Solar is the world's leading total solution provider for solar energy. With local presence around the globe, Trina Solar is able to provide exceptional service to each customer in each market and deliver our innovative, reliable products with the backing of Trina as a strong, bankable brand. Trina Solar now distributes its PV products to over 100 countries all over the world. We are committed to building strategic, mutually beneficial collaborations with installers, developers, distributors and other partners in driving smart energy together.

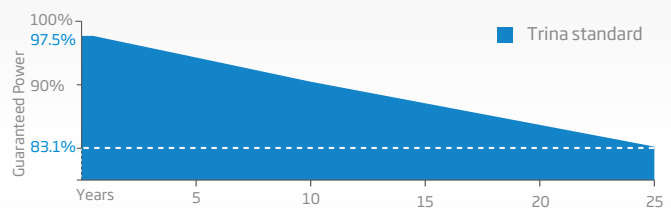
Comprehensive Products and System Certificates

IEC61215/IEC61730/IEC61701/IEC62716
 ISO 9001: Quality Management System
 ISO 14001: Environmental Management System
 ISO14064: Greenhouse Gases Emissions Verification
 OHSAS 18001: Occupation Health and Safety Management System



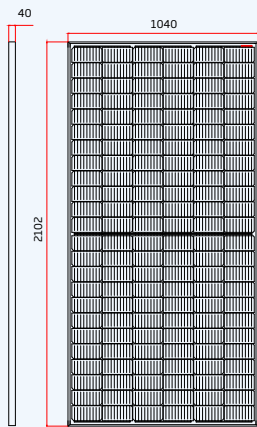
PERFORMANCE WARRANTY

10 Year Product Warranty · 25 Year Power Warranty

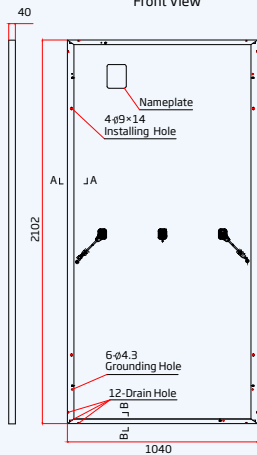


From the 2nd year to the 25th year, the average annual power decline will be no more than 0.6%.

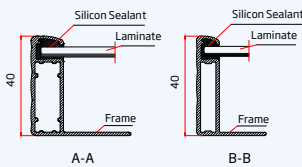
DIMENSIONS OF PV MODULE(mm)



Front View



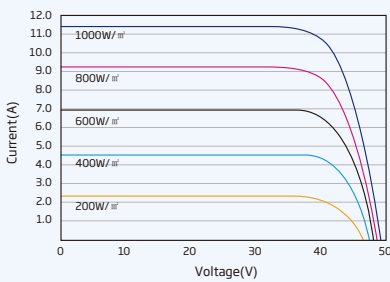
Back View



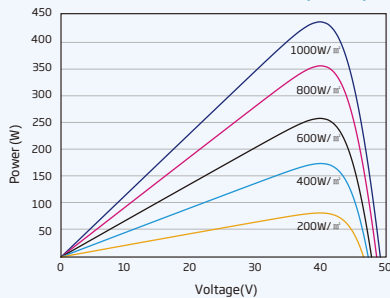
A-A

B-B

I-V CURVES OF PV MODULE(440W)



P-V CURVES OF PV MODULE(440W)



ELECTRICAL DATA (STC)

Peak Power Watts- P_{MAX} (Wp)*	430	435	440	445	450
Power Output Tolerance- P_{MAX} (W)			0 ~ +5		
Maximum Power Voltage- V_{MPP} (V)	40.3	40.5	40.7	40.8	41.0
Maximum Power Current- I_{MPP} (A)	10.67	10.74	10.82	10.90	10.98
Open Circuit Voltage- V_{OC} (V)	48.7	49.0	49.2	49.4	49.6
Short Circuit Current- I_{SC} (A)	11.22	11.31	11.39	11.46	11.53
Module Efficiency η_m (%)	19.7	19.9	20.1	20.4	20.6

STC: Irradiance 1000W/m², Cell Temperature 25°C, Air Mass AM1.5.

*Measuring tolerance: ±3%.

ELECTRICAL DATA (NMOT)

Maximum Power- P_{MAX} (Wp)	325	329	333	336	340
Maximum Power Voltage- V_{MPP} (V)	38.0	38.2	38.4	38.5	38.7
Maximum Power Current- I_{MPP} (A)	8.56	8.61	8.68	8.73	8.80
Open Circuit Voltage- V_{OC} (V)	46.0	46.3	46.4	46.6	46.8
Short Circuit Current- I_{SC} (A)	9.03	9.11	9.17	9.23	9.28

NMOT: Irradiance at 800W/m², Ambient Temperature 20°C, Wind Speed 1m/s.

MECHANICAL DATA

Solar Cells	Monocrystalline
Cell Orientation	144 cells (6 × 24)
Module Dimensions	2102 × 1040 × 40 mm (82.76 × 40.94 × 1.57 inches)
Weight	24.9kg (54.9lb)
Glass	3.2 mm (0.13 inches), High Transmission, AR Coated Heat Strengthened Glass
Encapsulant Material	EVA
Backsheet	White
Frame	40 mm (1.57 inches) Anodized Aluminium Alloy
J-Box	IP 68 rated
Cables	Photovoltaic Technology Cable 4.0mm ² (0.006 inches ²), Portrait: N 280mm/P 280mm(11.02/11.02inches) Landscape: N 1400 mm /P 1400 mm (55.12/55.12 inches)
Connector	MC4 EVO2 / TS4*

*Please refer to regional datasheet for specified connector.

TEMPERATURE RATINGS

NMOT (Nominal Module Operating Temperature)	41 C (±3 C)
Temperature Coefficient of P_{MAX}	- 0.36%/ C
Temperature Coefficient of V_{OC}	- 0.26%/ C
Temperature Coefficient of I_{SC}	0.04%/ C

(Do not connect Fuse in Combiner Box with two or more strings in parallel connection)

MAXIMUM RATINGS

Operational Temperature	-40~+85 C
Maximum System Voltage	1500V DC (IEC) 1500V DC (UL)
Max Series Fuse Rating	20A

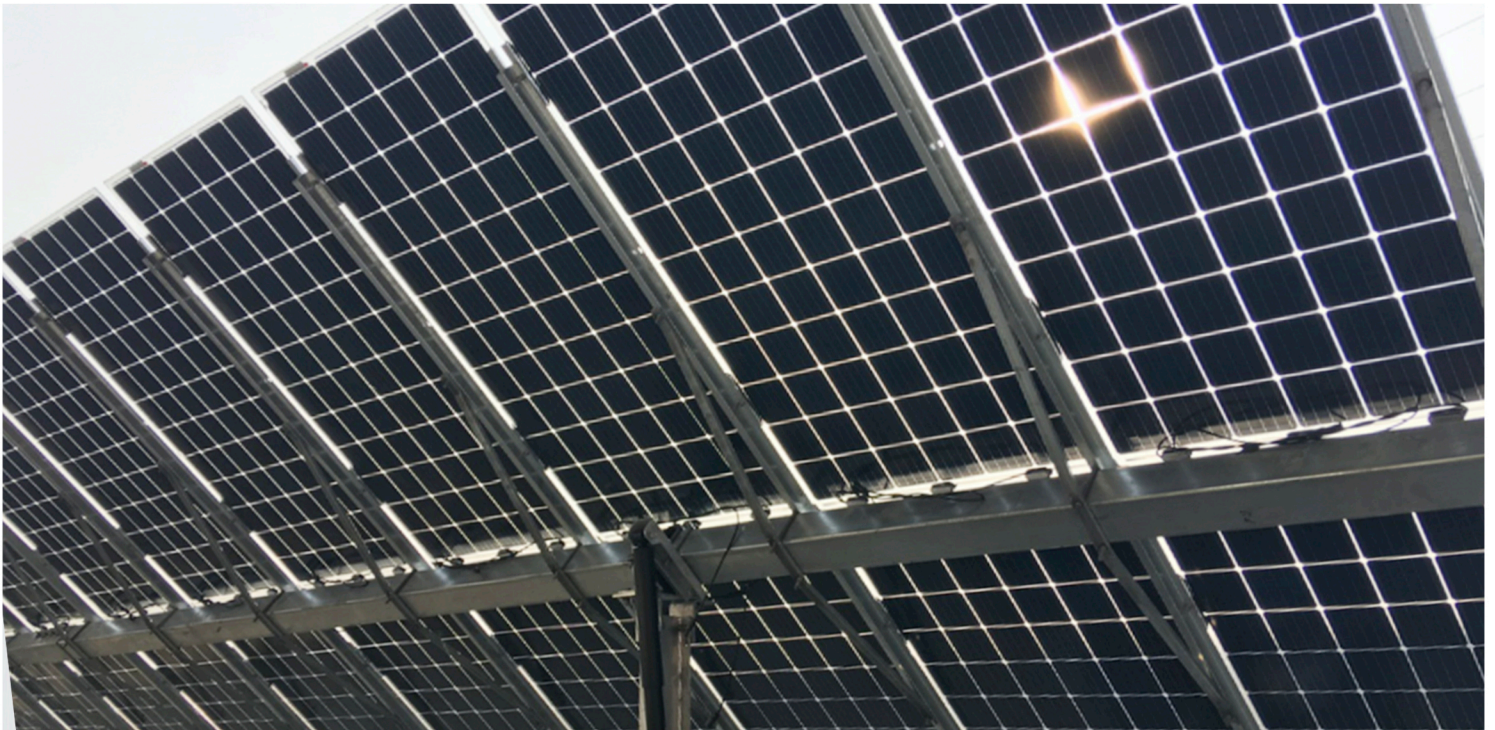
WARRANTY

10 year Product Workmanship Warranty
25 year Power Warranty

(Please refer to product warranty for details)

PACKAGING CONFIGURATION

Modules per box: 27 pieces
Modules per 40' container: 594 pieces



SkySmart

Single Row Double Performance

SkySmart Product Features

1

The industrial
N-S slope
record **20%**



2

Only **200**
foundations/MW



3

Apply to
✓ bifacial module
✓ regular module



4

Self-powered system
with Li-ion battery
as a backup



5

1st tracker supplier
to apply LoRa-wireless
communication
technology



6

Double pitch risk-free
drive-through
module cleaning



SKYSMART TRACKER SPECIFICATIONS

Tracking Type	Independent Horizontal Single Axis Tracker
Tracking Range	Up to 120°(±60°)
Driving System	One Slewing Gear, 24VDC Motor
Modules per Tracker	Up to 90 modules per tracker
System Voltage	1,000 Volt or 1,500 Volt
Ground Coverage Ratio	Fully configurable by customer, typical range 33%-55%
Foundation Options	Ramming/Pre-drilling/Concrete Piles/Screw Pile
Terrain Adaption	Up to 20% N-S Slope
Structure Material	Hot Dipped Galvanized/Pre-Galvanized Steel
Power Supply	Self-powered PV series
Daily Energy Consumption	Typical 0.08kWh
Standard Wind Design	105mph(47m/s) per ASCE7-10, higher wind load available
Wind Protection	Stow when wind speed > 18m/s
Module Supported	Most commercially available
Operation Temperature	-30°C to 60°C

ELECTRONIC CONTROLLER SPECIFICATIONS

Control System	1 Controller per 3 Trackers
Control Algorithm	Astronomical Algorithms + Tilt Sensor Close Loop
Tracking Accuracy	$\leq \pm 2^\circ$
Backtracking	Yes
Communication	RS 485 cable/ LoRa wireless
Night Position	Yes

