



REGIONE PUGLIA

Provincia di BARI

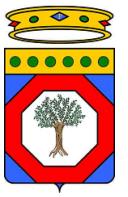
**Comune di
GRAVINA**


COMUNE DI GRAVINA IN PUGLIA

PROVINCIA DI BARI



REGIONE PUGLIA



**REALIZZAZIONE DI UN IMPIANTO SOLARE FOTOVOLTAICO CONNESSO
ALLA RETE ELETTRICA NAZIONALE DELLA POTENZA DI PICCO PARI A
19.093,36 kW E POTENZA IN IMMISSIONE PARI A 15.400,00 kW,
COLLEGATO AD UN PIANO AGRONOMOICO PER L'UTILIZZO A SCOPI
AGRICOLI DELL'AREA**

Denominazione Impianto:

IMPIANTO GRAVINA 1

Ubicazione:

Comune di Gravina di Puglia (BA)
Contrada Recupa Piana dei Ricci

**ELABORATO
6.2-PDEG**

INSERIMENTO URBANISTICO

Cod. Doc.:6.2-PDEG

**COMET ENERGY
POW//R**

Project - Commissioning - Consulting
Municipiul Bucuresti Sector 1
Str. HRISOVULUI Nr. 2-4, Parter, Camera 1, Bl. 2, Ap. 88
RO41889165

Scala: Varie

PROGETTO

Data:
02.01.2021

PRELIMINARE	DEFINITIVO	ESECUTIVO
<input type="checkbox"/>	<input checked="" type="checkbox"/>	<input type="checkbox"/>

 **HELIOSOPHIA**
concept

Heliosophia concept S.r.l.
Strada Berthelot, 21
Bucarest
030167 ROMANIA

Tecnici:
Dott. Ing. Luca Ferracuti Pompa
Iscritto al n.A344 dell'Albo degli Ingegneri
della Provincia di Fermo

Revisione	Data	Descrizione	Redatto	Approvato	Autorizzato
01	06.02.2020	Progetto Definitivo	F.P.L.	F.P.L.	F.P.L.
02	06.02.2020	Revisione	F.P.L.	F.P.L.	F.P.L.
03					
04					

Il Tecnico:

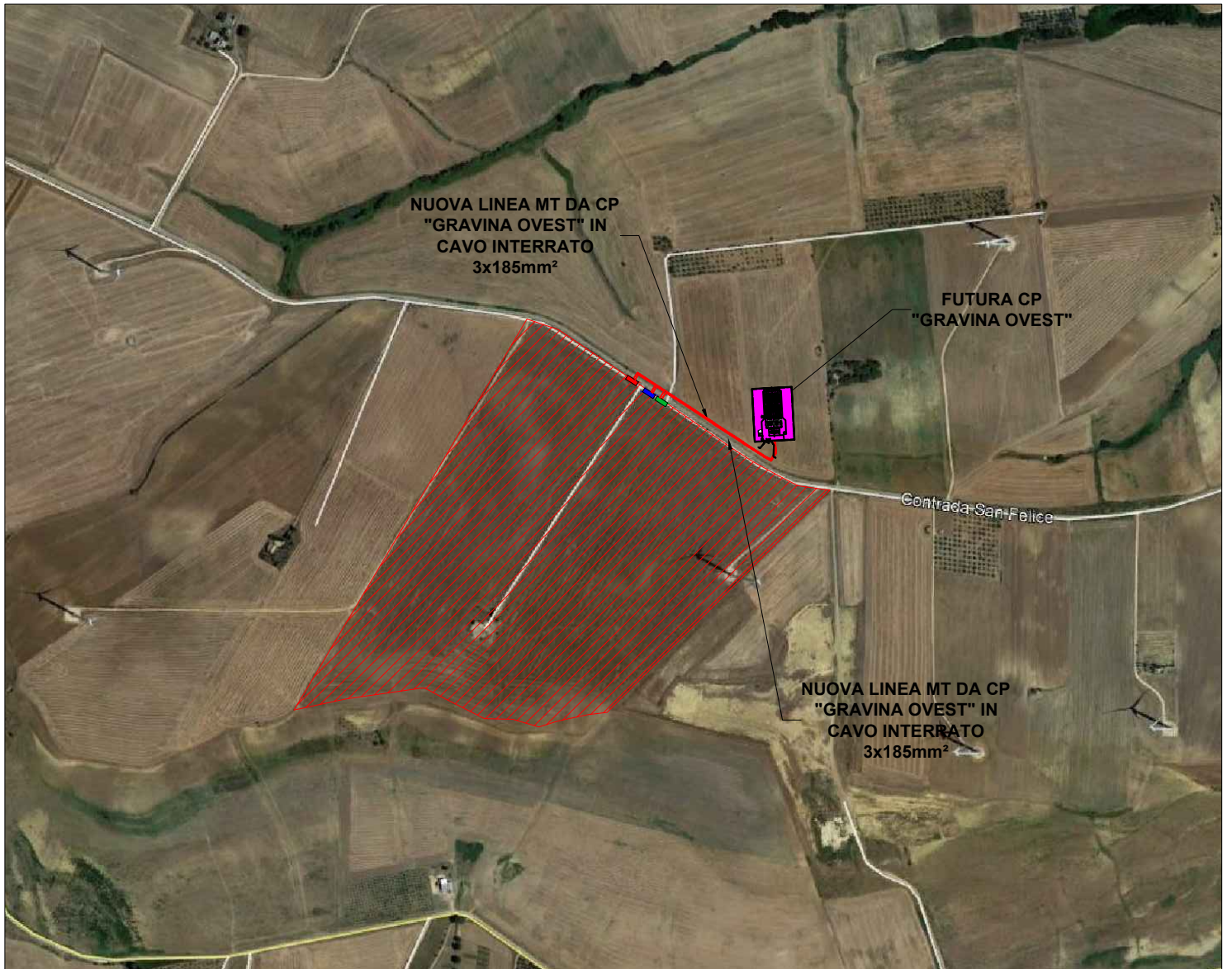
Dott. Ing. Luca Ferracuti Pompa
(Iscritto al n. A344, dell'Albo dell'Ordine degli Ingegneri della Provincia di Fermo)

il Richiedente:







GRAVINA S.r.l.

Piazza Walther Vogelweide, 8 - 39100 Bolzano (BZ)
P.iva : 03057032019

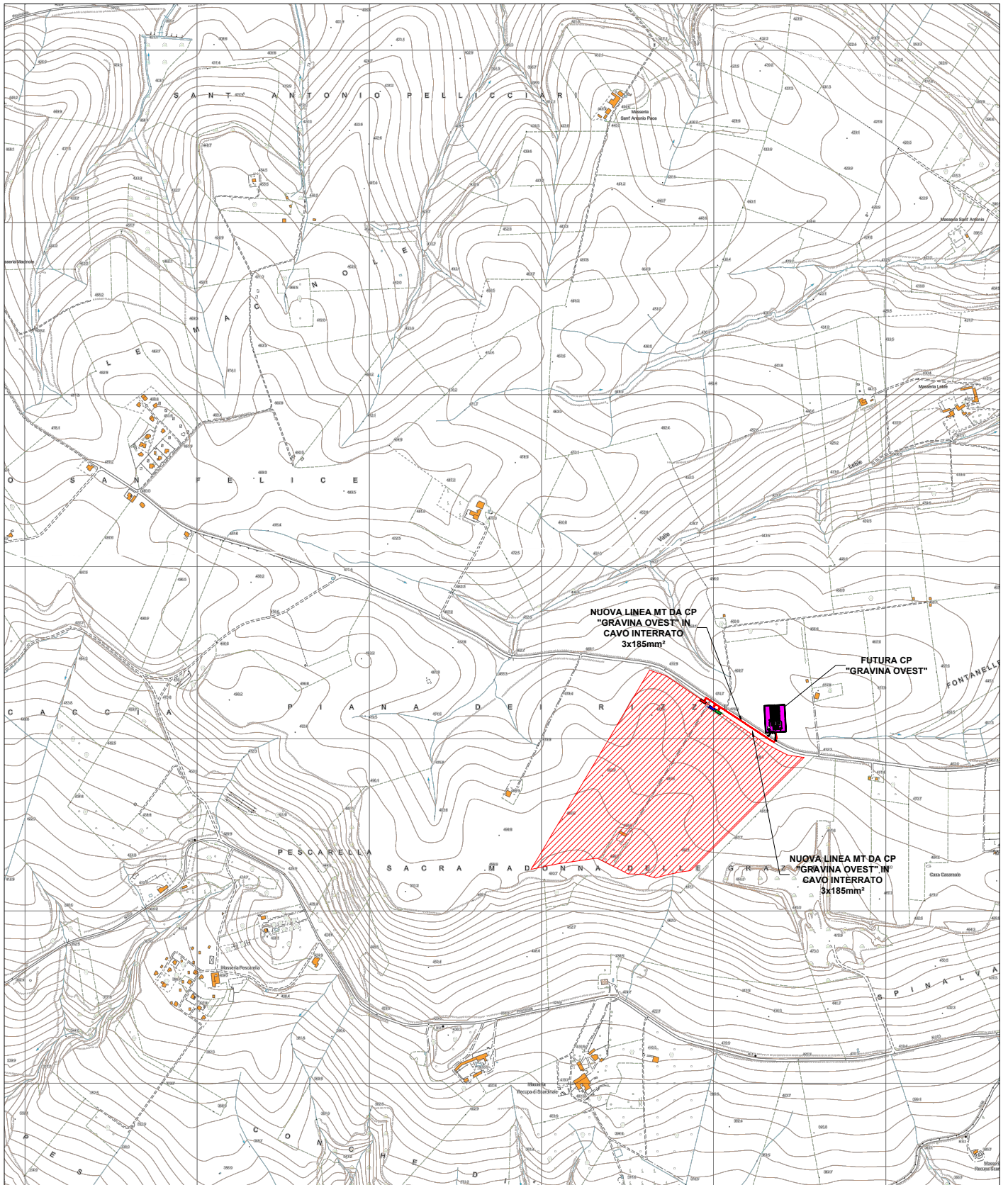
INQUADRAMENTO IMPIANTO SU IMMAGINE SATELLITARE









SCALA 1:10.000

-  IMPIANTO FV
-  PERCORSO LINEA MT INTERRATA
-  CABINA PRIMARIA "GRAVINA OVEST "
-  CABINA DI CONSEGNA FV1
-  CABINA DI CONSEGNA FV3
-  CABINA DI CONSEGNA FV2

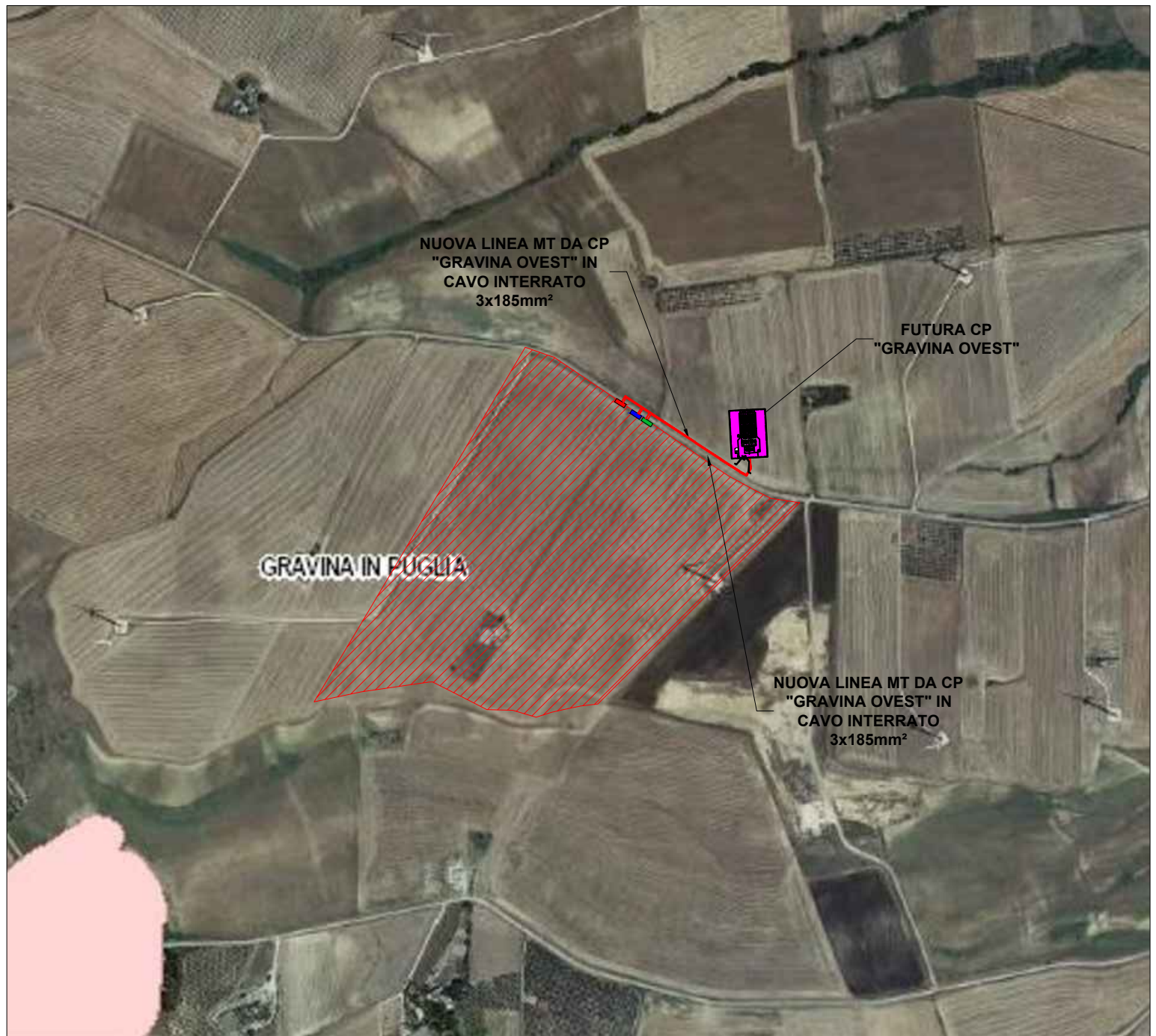
INQUADRAMENTO IMPIANTO SU CTR PUGLIA



-  **IMPIANTO FV**
-  **PERCORSO LINEA MT INTERRATA**
-  **CABINA PRIMARIA "GRAVINA OVEST"**
-  **CABINA DI CONSEGNA FV1**
-  **CABINA DI CONSEGNA FV3**
-  **CABINA DI CONSEGNA FV2**

SCALA 1:25.000

INQUADRAMENTO IMPIANTO SU PAI REGIONE PUGLIA

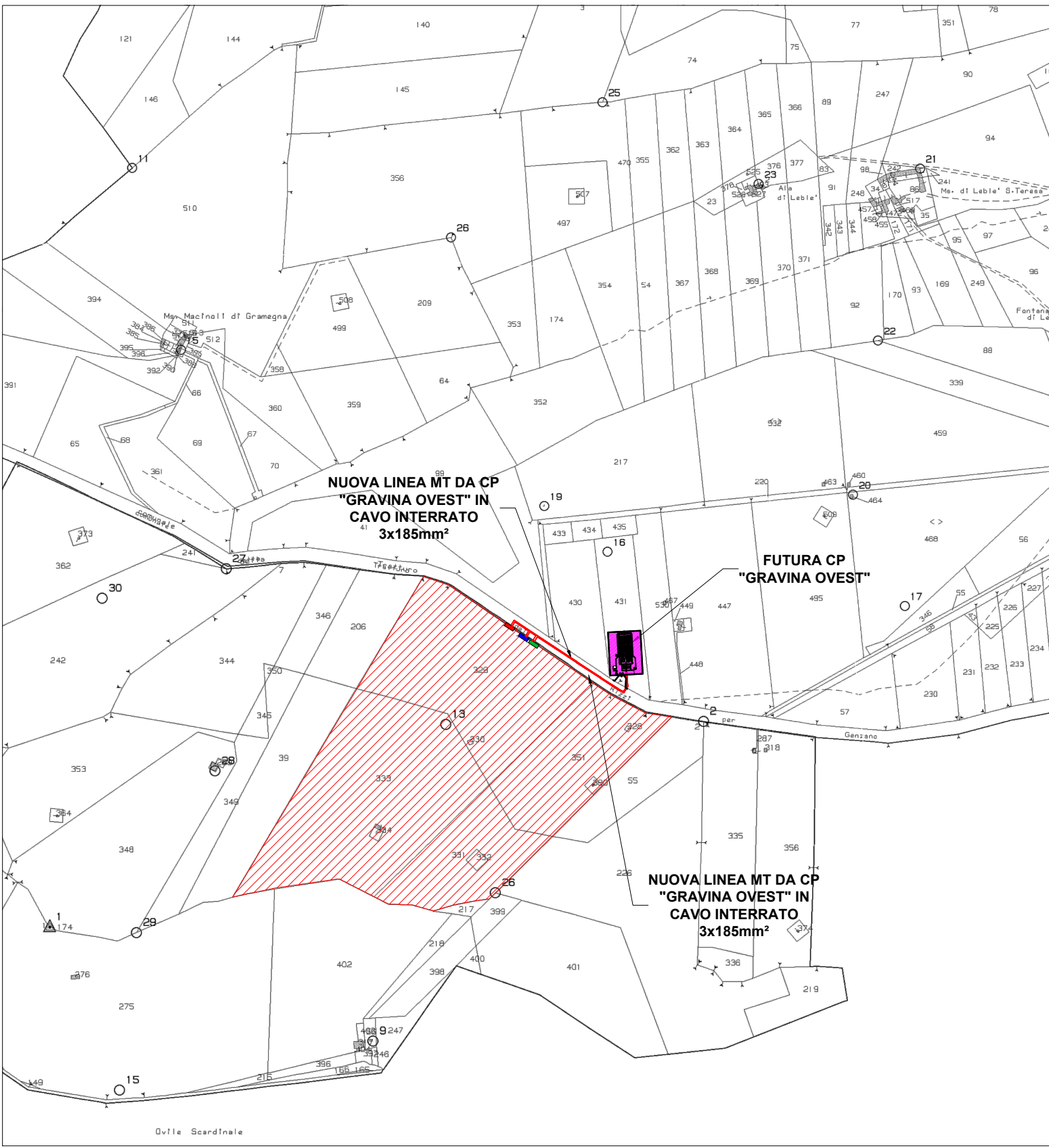


SCALA 1:10.000

- IMPIANTO FV
- PERCORSO LINEA MT INTERRATA
- CABINA PRIMARIA "GRAVINA OVEST "
- CABINA DI CONSEGNA FV1
- CABINA DI CONSEGNA FV3
- CABINA DI CONSEGNA FV2

P.A.I.	
Puglia	
Pericolosità idraulica	
	MP
	AP
Pericolosità geomorfologica	
	PG2
	PG3
Rischio	
	R3
	R4

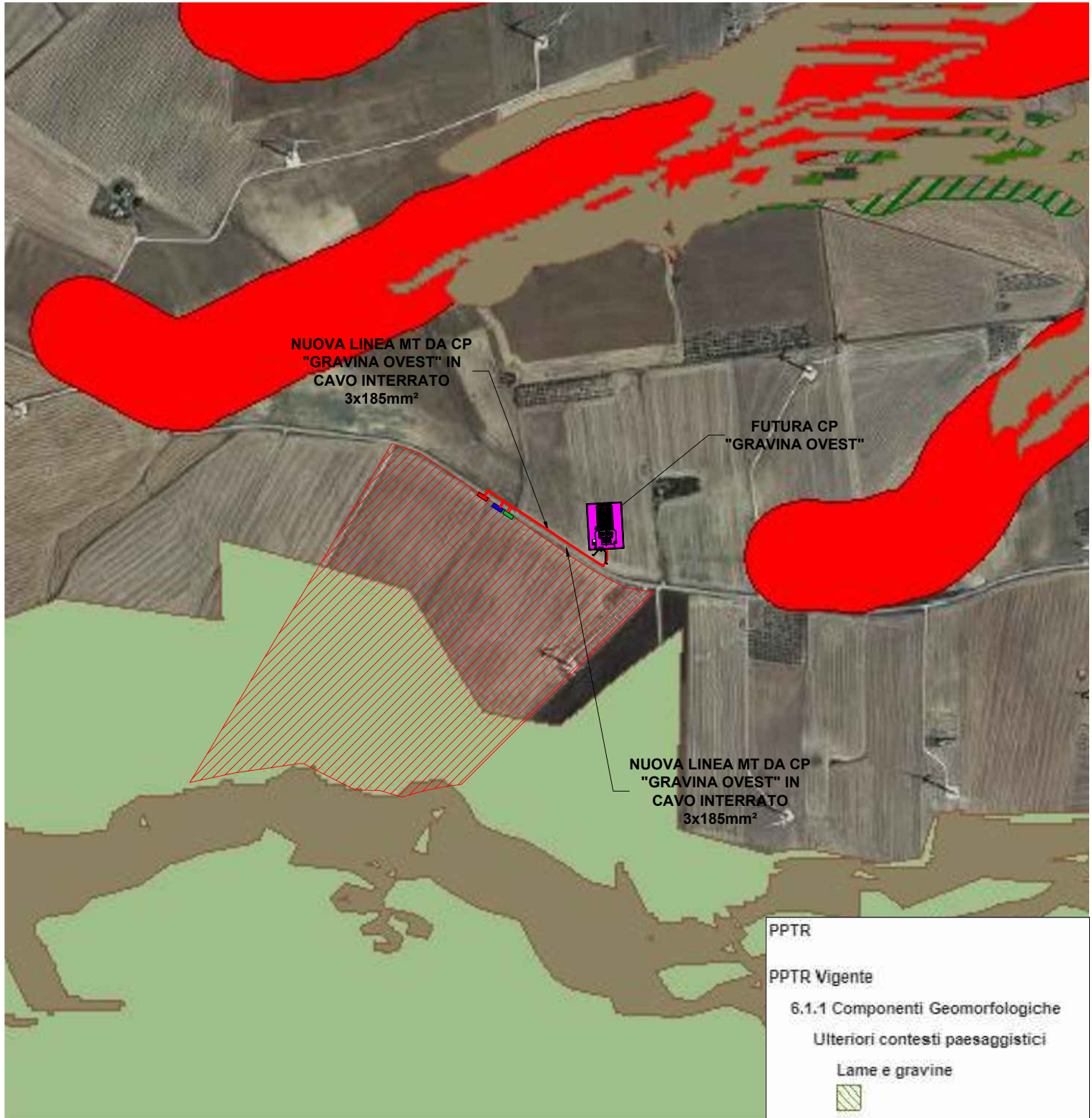
INQUADRAMENTO IMPIANTO SU ESTRATTO DI MAPPA









- IMPIANTO FV**
- PERCORSO LINEA MT INTERRATA**
- CABINA PRIMARIA "GRAVINA OVEST"**
- CABINA DI CONSEGNA FV1**
- CABINA DI CONSEGNA FV3**
- CABINA DI CONSEGNA FV2**

SCALA 1:10.000

INQUADRAMENTO IMPIANTO SU PPTR



SCALA 1:10.000

-  IMPIANTO FV
-  PERCORSO LINEA MT INTERRATA
-  CABINA PRIMARIA "GRAVINA OVEST "
-  CABINA DI CONSEGNA FV1
-  CABINA DI CONSEGNA FV3
-  CABINA DI CONSEGNA FV2

PPTR

PPTR Vigente

6.1.1 Componenti Geomorfologiche

Ulteriori contesti paesaggistici

Lame e gravine



Doline



Geositi (fascia tutela)



Inghiottitoi



Cordoni dunari



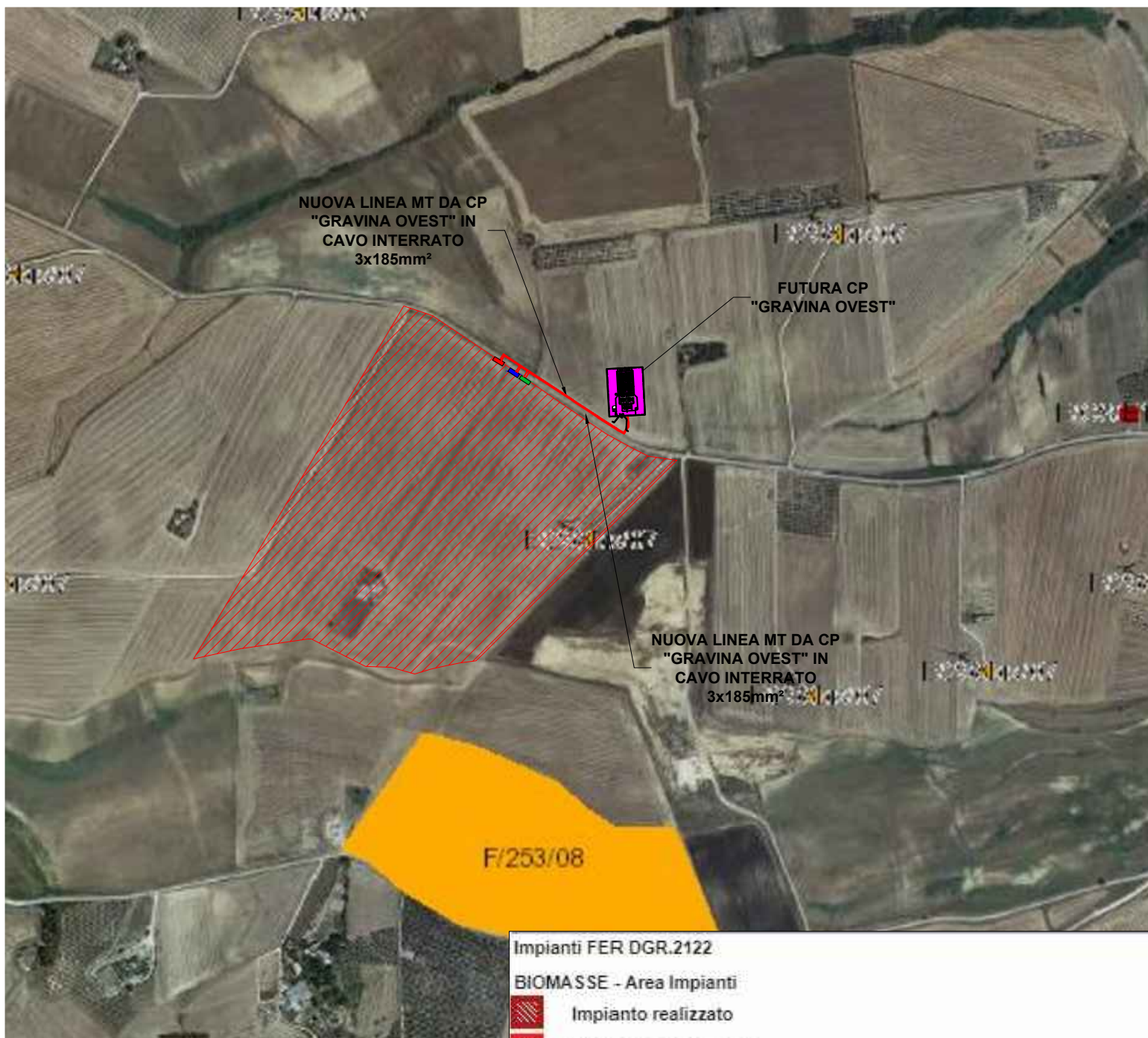
Grotte









Versanti



INQUADRAMENTO IMPIANTO SU REGOLAMENTO 24 REGIONE PUGLIA







SCALA 1:25.000





-  IMPIANTO FV
-  PERCORSO LINEA MT INTERRATA
-  CABINA PRIMARIA "GRAVINA OVEST"
-  CABINA DI CONSEGNA FV1
-  CABINA DI CONSEGNA FV3
-  CABINA DI CONSEGNA FV2

Impianti FER DGR.2122





BIOMASSE - Area Impianti

-  Impianto realizzato
-  Impianto cantierizzato
-  Impianto con iter di autorizzazione unica chiuso positivamente
-  Impianto con valutazione ambientale chiusa positivamente

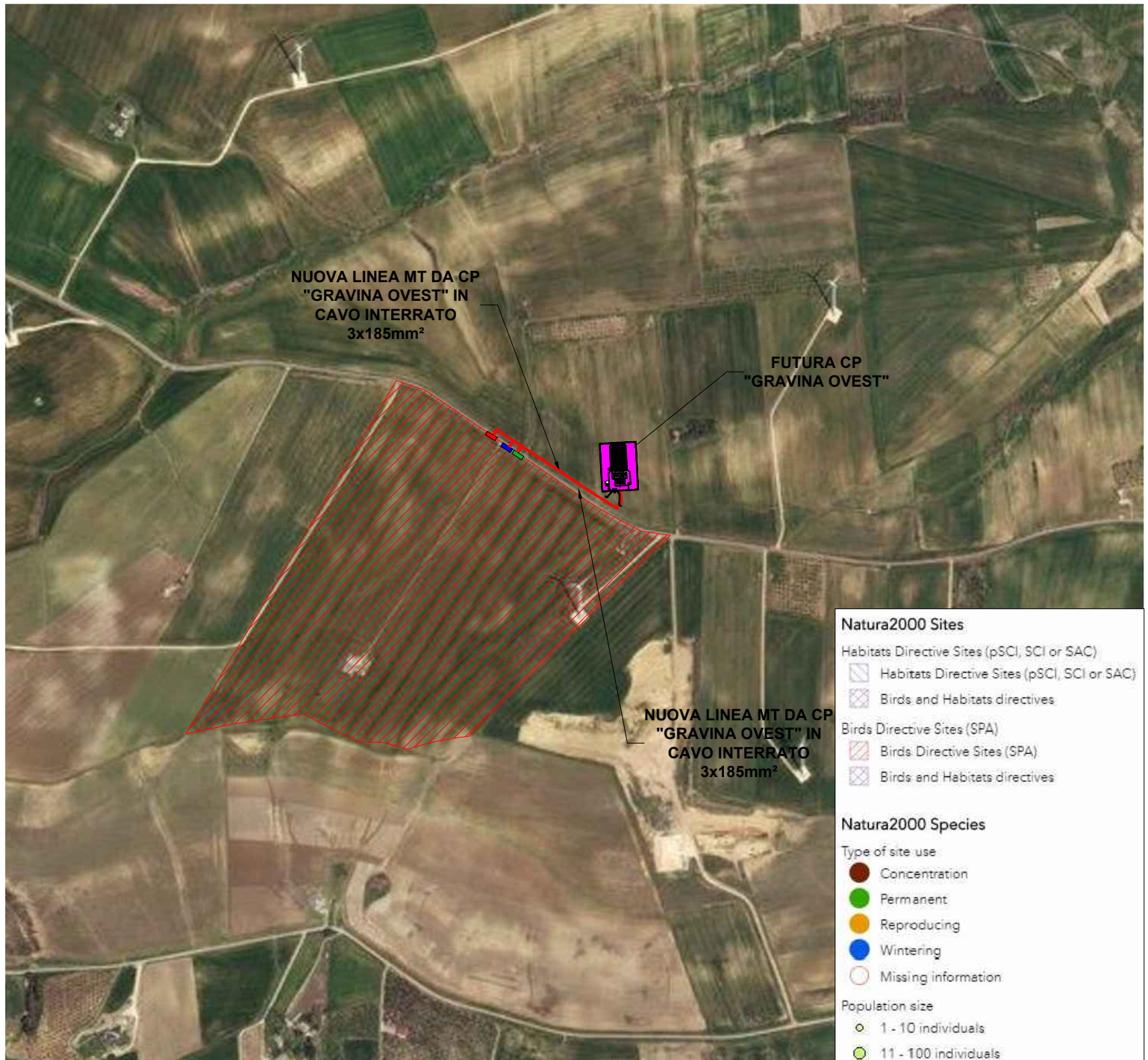
EOLICO - Aerogeneratori

-  Impianto realizzato
-  Impianto cantierizzato
-  Impianto con iter di autorizzazione unica chiuso positivamente
-  Impianto con valutazione ambientale chiusa positivamente

FOTOVOLTAICO - Area Impianti

-  Impianto realizzato
-  Impianto cantierizzato
-  Impianto con iter di autorizzazione unica chiuso positivamente
-  Impianto con valutazione ambientale chiusa positivamente

INQUADRAMENTO IMPIANTO SU RETE NATURA 2000



SCALA 1:10.000

- IMPIANTO FV
- PERCORSO LINEA MT INTERRATA
- CABINA PRIMARIA "GRAVINA OVEST "
- CABINA DI CONSEGNA FV1
- CABINA DI CONSEGNA FV3
- CABINA DI CONSEGNA FV2

Natura2000 Sites

Habitats Directive Sites (pSCI, SCI or SAC)

- Habitats Directive Sites (pSCI, SCI or SAC)
- Birds and Habitats directives

Birds Directive Sites (SPA)

- Birds Directive Sites (SPA)
- Birds and Habitats directives

Natura2000 Species

Type of site use

- Concentration
- Permanent
- Reproducing
- Wintering
- Missing information

Population size

- 1 - 10 individuals
- 11 - 100 individuals
- 101 - 1.000 individuals
- 1.001 - 10.000 individuals
- > 10.000 individuals
- + Missing information

Natura 2000 Habitat type

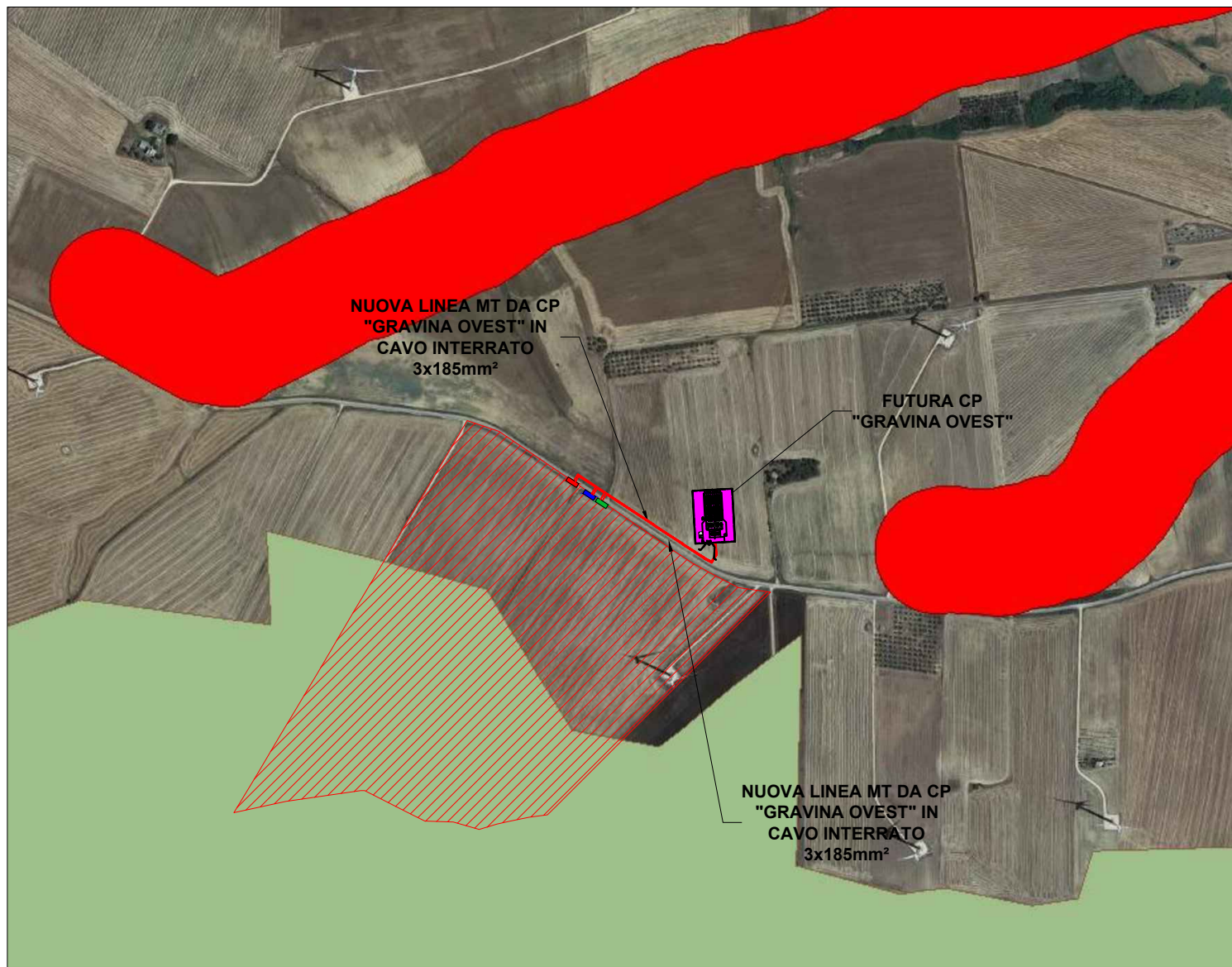
Degree of conservation of habitat types

- A
- B
- C
- + Missing information






Habitat type area in the site:

- < 1 ha
- 1 - 10 ha
- 11 - 100 ha
- 101 - 1.000 ha
- 1.001 - 10.000 ha
- >= 10.001 ha

INQUADRAMENTO IMPIANTO SU
VINCOLO IDROGEOLOGICO REGIONE PUGLIA



SCALA 1:10.000

-  IMPIANTO FV
-  PERCORSO LINEA MT INTERRATA
-  CABINA PRIMARIA "GRAVINA OVEST"
-  CABINA DI CONSEGNA FV1
-  CABINA DI CONSEGNA FV3
-  CABINA DI CONSEGNA FV2

6.1.2 Componenti Idrologiche

Ulteriori contesti paesaggistici

Sorgenti



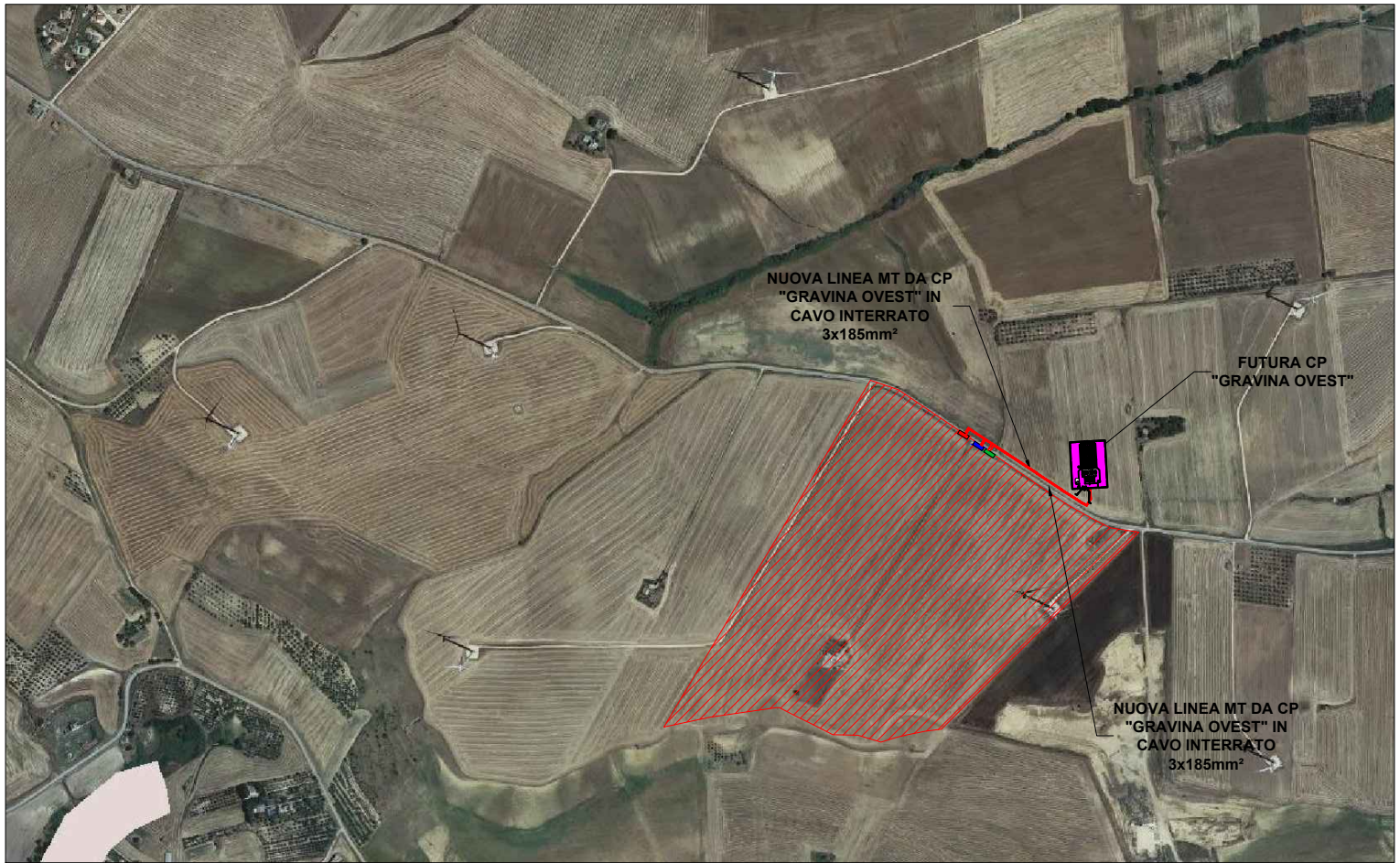
Reticolo idrografico di connessione della R.E.R.








Vincolo idrogeologico



INQUADRAMENTO IMPIANTO SU PUTT REGIONE PUGLIA




SCALA 1:10.000

-  IMPIANTO FV
-  PERCORSO LINEA MT INTERRATA
-  CABINA PRIMARIA "GRAVINA OVEST "
-  CABINA DI CONSEGNA FV1
-  CABINA DI CONSEGNA FV3
-  CABINA DI CONSEGNA FV2

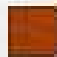
Aree Non Idonee

P.U. T.T./p.

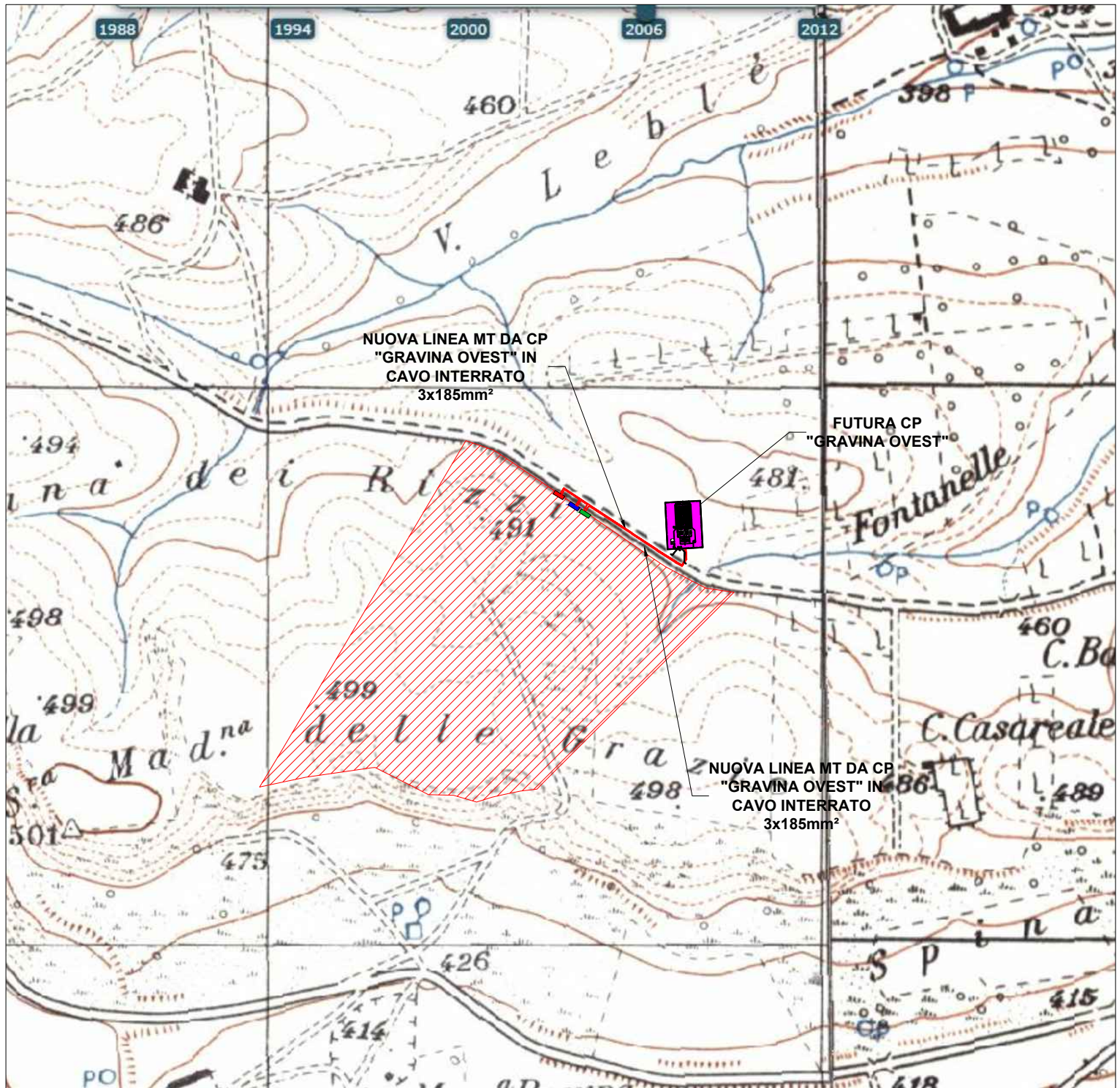
Ate A









Ate B



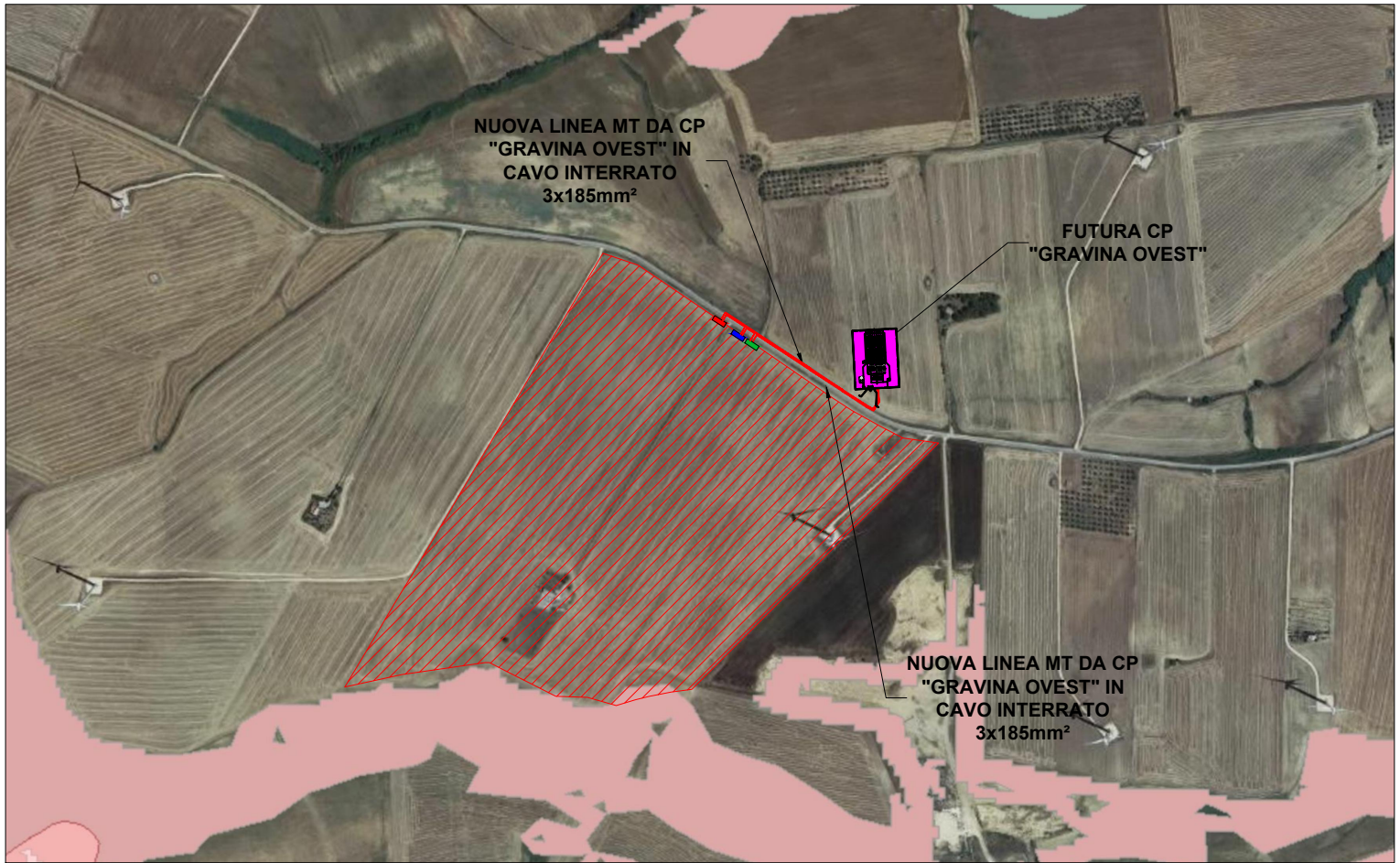
INQUADRAMENTO IMPIANTO SU
IGM REGIONE PUGLIA









SCALA 1:10.000

-  IMPIANTO FV
-  PERCORSO LINEA MT INTERRATA
-  CABINA PRIMARIA "GRAVINA OVEST "
-  CABINA DI CONSEGNA FV1
-  CABINA DI CONSEGNA FV3
-  CABINA DI CONSEGNA FV2

INQUADRAMENTO IMPIANTO SU AREE NON IDONEE



SCALA 1:10.000

-  IMPIANTO FV
-  PERCORSO LINEA MT INTERRATA
-  CABINA PRIMARIA "GRAVINA OVEST "
-  CABINA DI CONSEGNA FV1
-  CABINA DI CONSEGNA FV3
-  CABINA DI CONSEGNA FV2