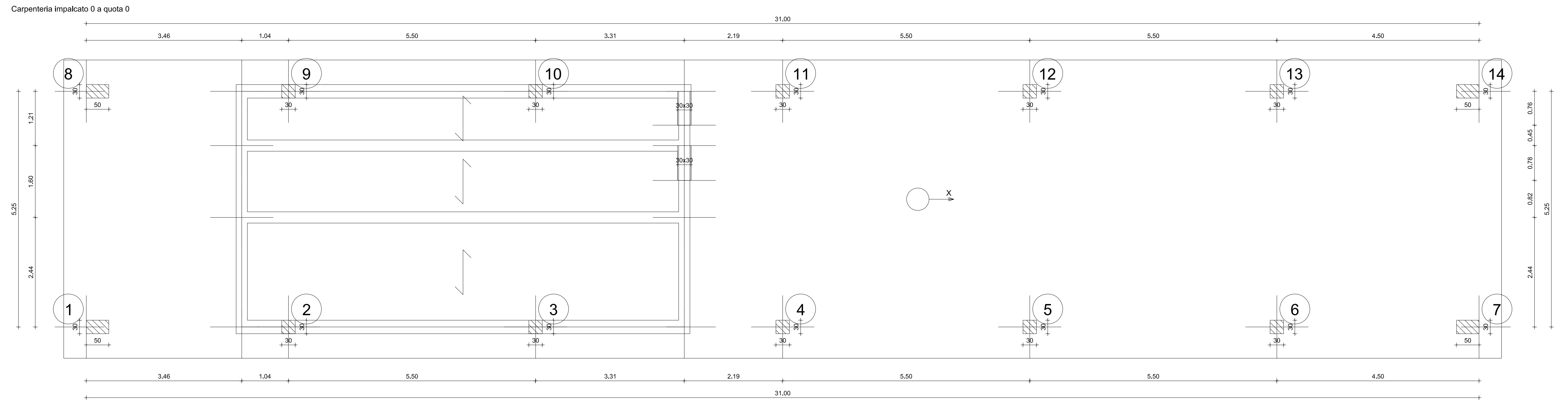
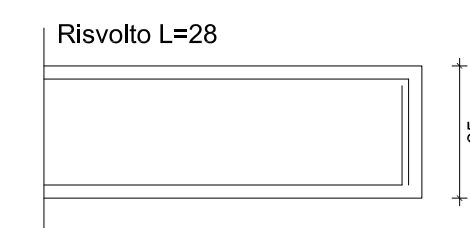


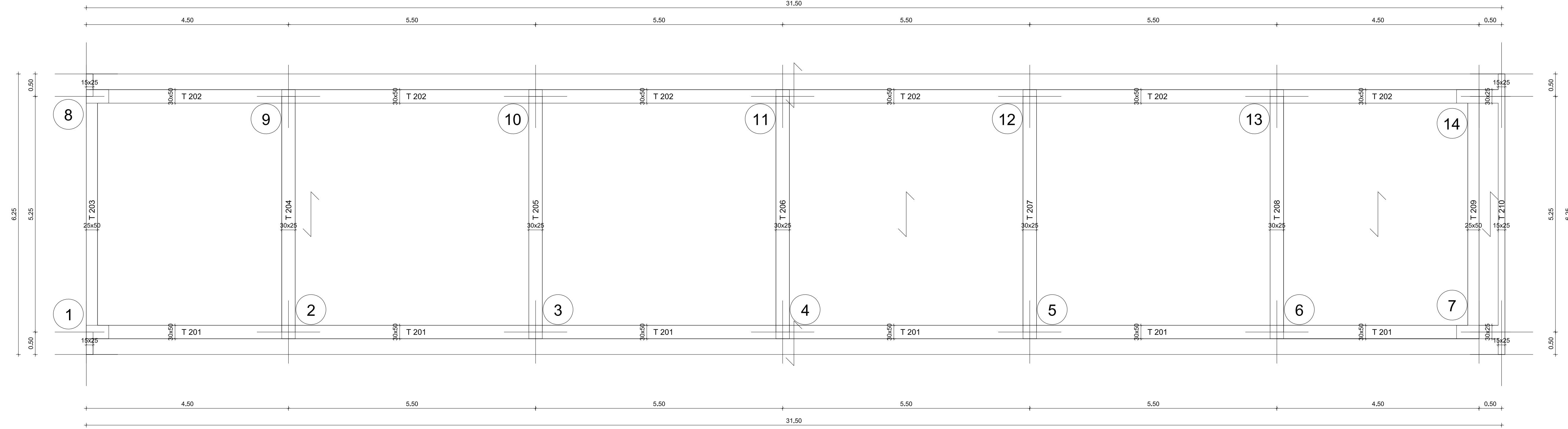
Armatura platea a quota -1.50
 Armatura platea a quota +0.00

Armatura superiore dir. X - Ø12/25
 Armatura superiore dir. Y - Ø12/25
 Armatura inferiore dir. X - Ø12/25
 Armatura inferiore dir. Y - Ø12/25

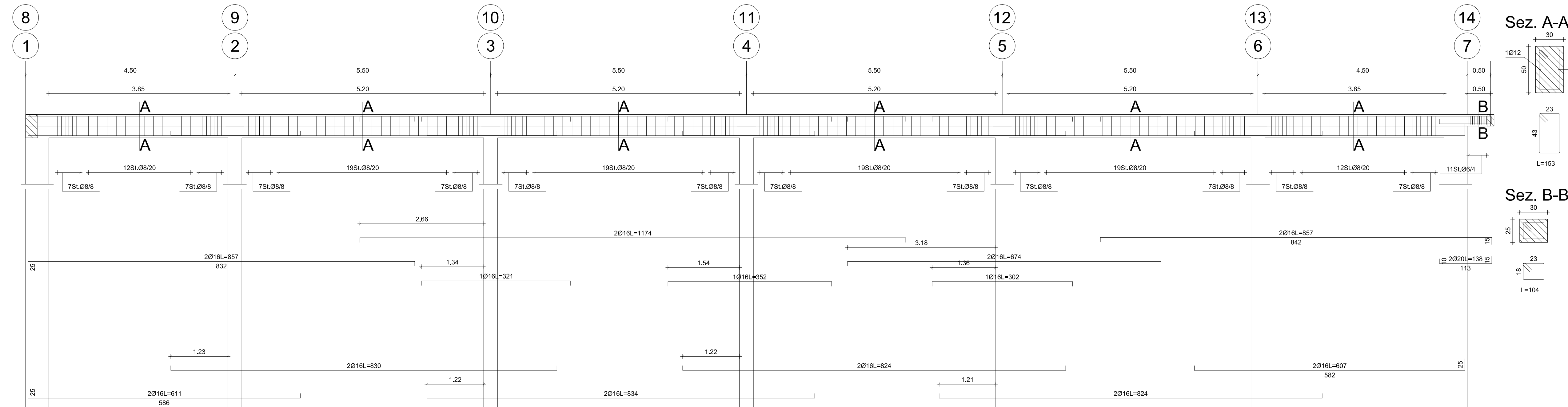
Particolari ferra (Scala 1:20)



Carpenteria impalcato 2 a quota 3.55

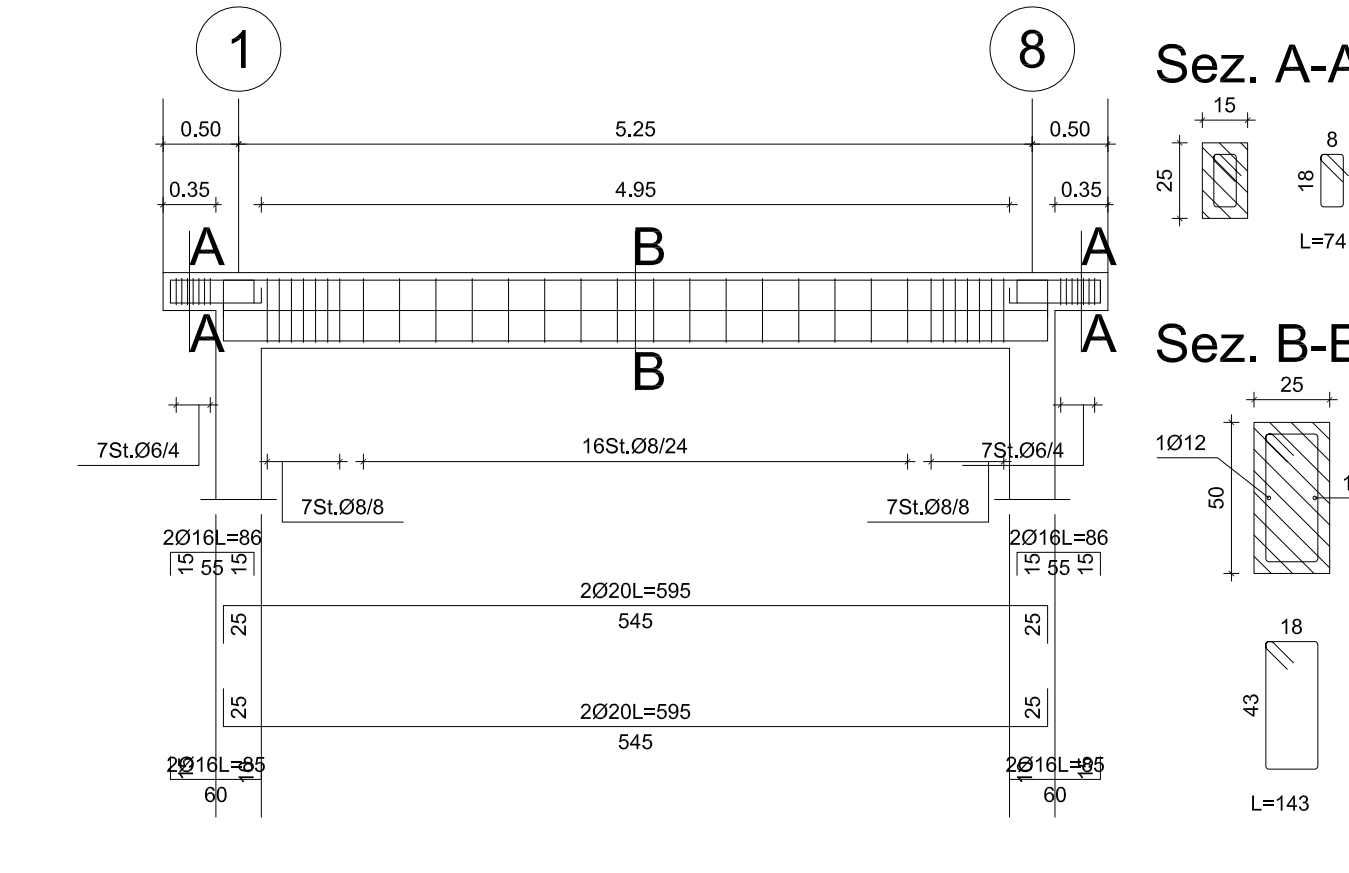


Travate 201-202



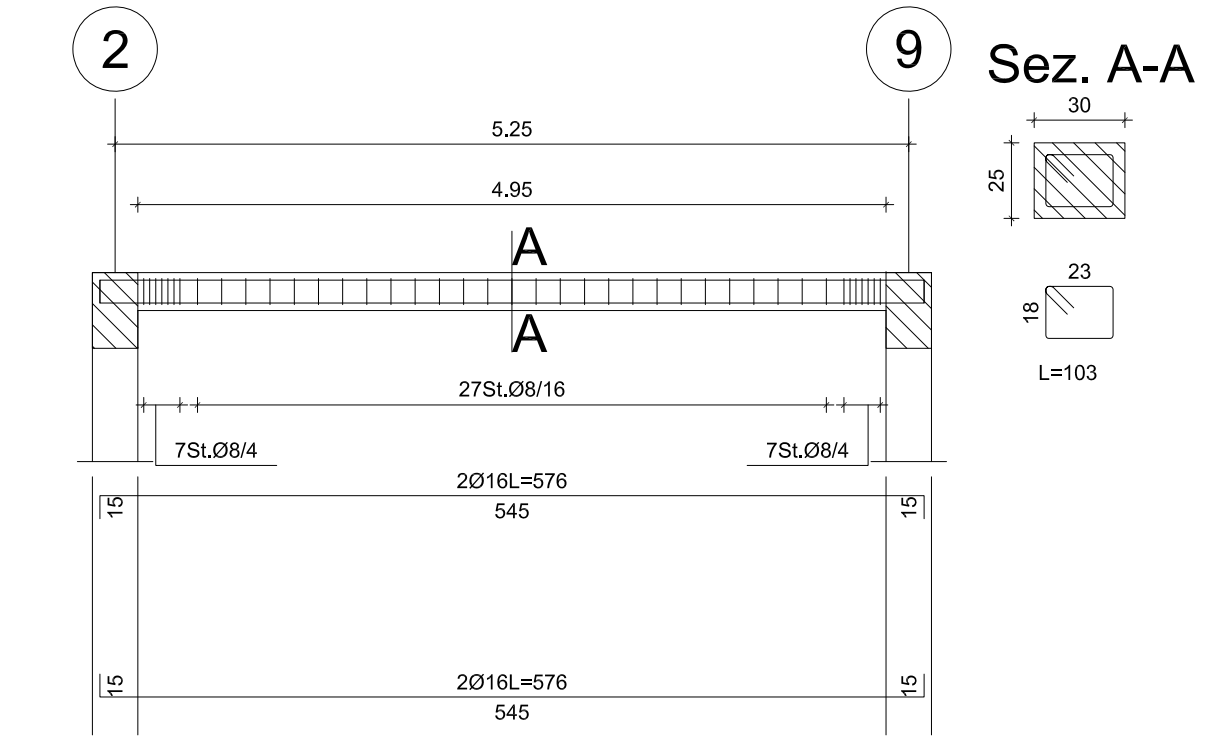
Computo travate 201-202			
Q	0.98	0.12	0.20
M	42.77	55.14	243.11
W	5.06	252.17	125.66
TOT	kg 908.03	-mc 3.38	-kg/mc 96.85

Travata 203

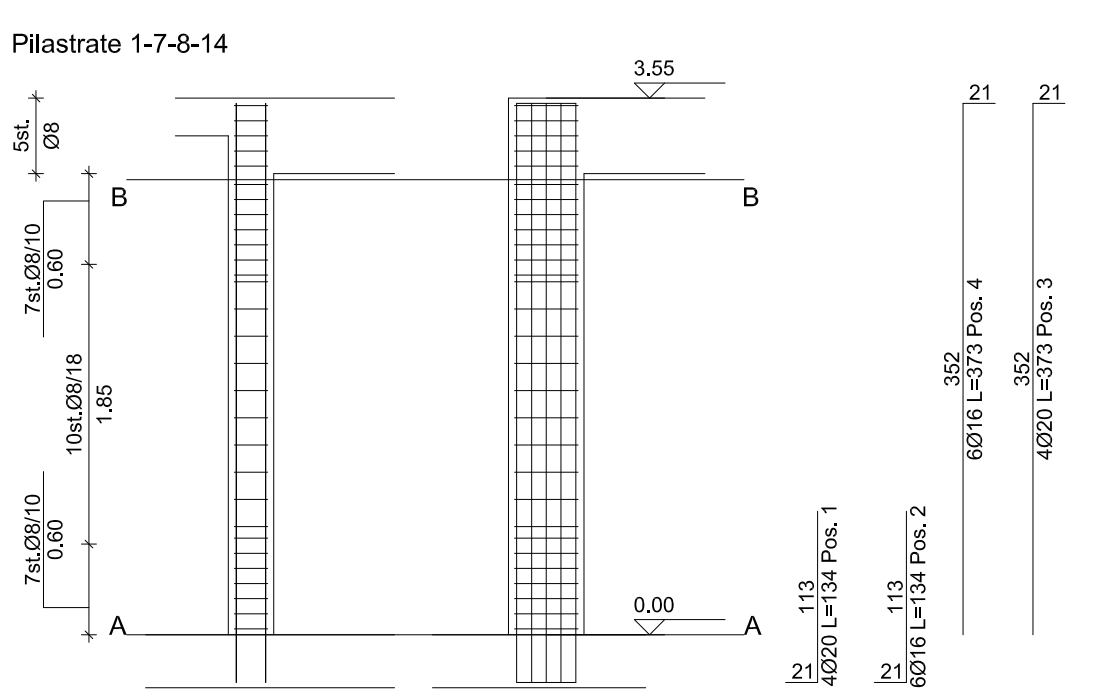


Computo travata 203			
Q	0.98	0.12	0.20
M	17.28	42.80	11.52
W	1.03	10.93	63.91
TOT	kg 98.94	-mc 0.89	-kg/mc 142.61

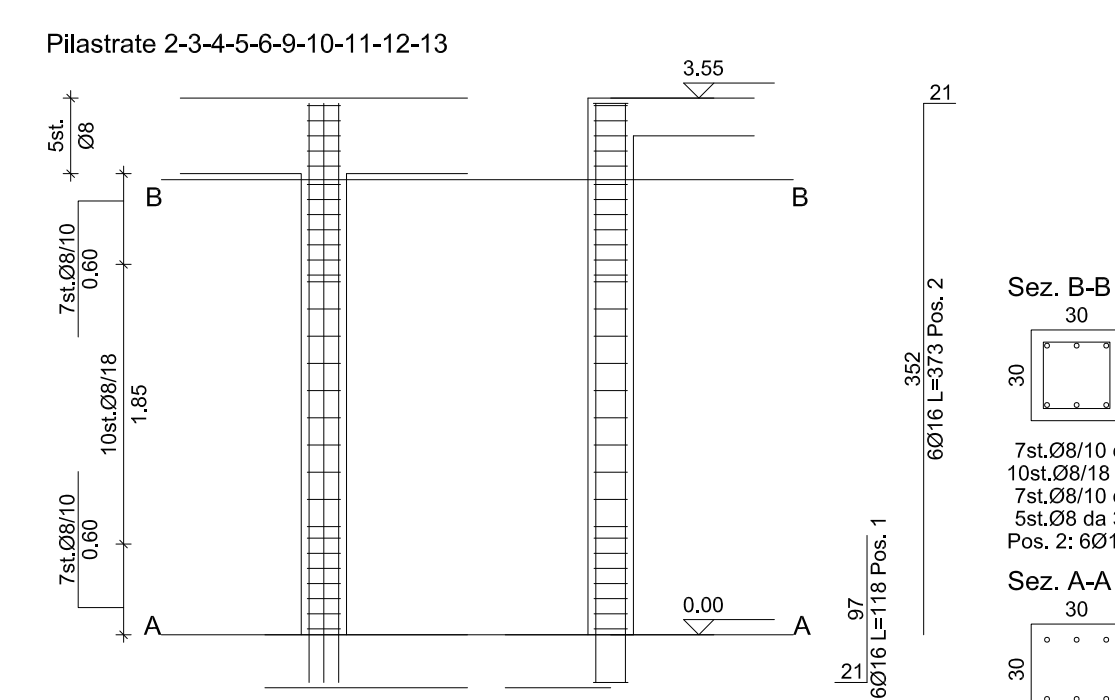
Travata 204



Computo travata 204			
Q	0.98	0.12	0.20
M	42.77	55.14	243.11
W	5.06	252.17	125.66
TOT	kg 908.03	-mc 3.38	-kg/mc 96.85

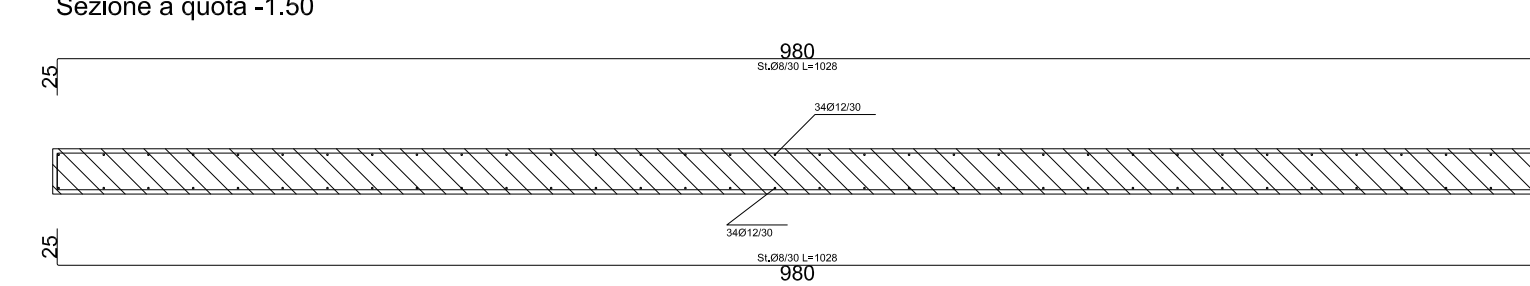


Computo pilastre 1-7-8-14			
Q	0.98	0.12	0.20
M	42.77	55.14	243.11
W	5.06	252.17	125.66
TOT	kg 488.12	-mc 2.13	-kg/mc 229.17



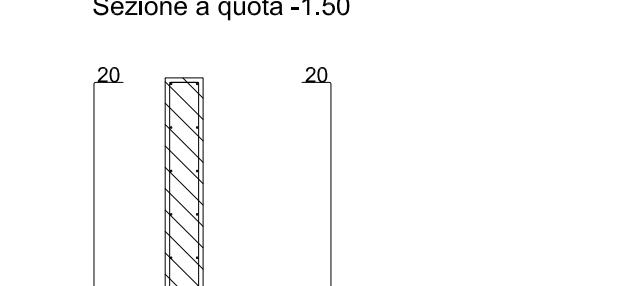
Computo pilastre 2-3-4-5-6-9-10-11-12-13			
Q	0.98	0.12	0.20
M	42.77	55.14	243.11
W	5.06	252.17	125.66
TOT	kg 599.57	-mc 3.19	-kg/mc 187.66

Nucleo 209 - 210 - 213 - 214



Computo nucleo 209			
Q	0.98	0.12	0.20
M	54.52	102.76	187.98
W	12.70	40.26	148.78
TOT	kg 201.43	-mc 9.43	-kg/mc 46.44

Nucleo 211 - 212



Computo nucleo 211			
Q	0.98	0.12	0.20
M	25.52	55.76	93.65
W	5.10	22.00	83.14
TOT	kg 110.81	-mc 1.97	-kg/mc 56.28

Regione Puglia
 COMUNI DI MARUGGIO(TA)-MANDURIA(TA)-SAVA(TA)
 AVETRANA(TA)-ERCHIE(BR)

PROGETTO PER LA REALIZZAZIONE DI IMPIANTO PER LA
 PRODUZIONE DI ENERGIA ELETTRICA DA FONTI RINNOVABILI,
 NONCHE' OPERE CONNESSE ED INFRASTRUTTURE, DI POTENZA
 PREVISTA IMMESA IN RETE PARI A 49,60 MW ALIMENTATO DA
 FONTE EOLICA DENOMINATO "MESSAPIA ENERGIA"

PROGETTO DEFINITIVO
 PARCO EOLICO "MESSAPIA ENERGIA"
 Codice Impianto: BAEQU27

Tav.: 3_29 Titolo: SSE 30/36 kV
 Calcoli preliminari strutture
 Carpenteria fondazioni

Scala: 1:100 Formato Stampa: A0 Codice Identificatore Elaborato: BAEQU27_ElaboratoGrafico_3_29

Progettazione: Gruppo di progettazione:
 Ing. Santo Mulla - Responsabile Progetto
 Ing. Francesco Mulla

Comitatario: **ENERGIA LEVANTE S.r.l.**
 Via S. Maria Maddalena, 113 - 70015 Maruggio (TA) - Italia
 P. IVA 102050207 - SISA 01219325 - energialevante@energialevante.it
 www.energialevante.it - Tel. +39 08842

Scelta del Gruppo: **SSE Renewables** For a better world of energy

Data	Motivo della revisione	Redatto	Controllato	Approvato
Lugli 2012	Prima emissione	F.M.	S.M.	G.M.