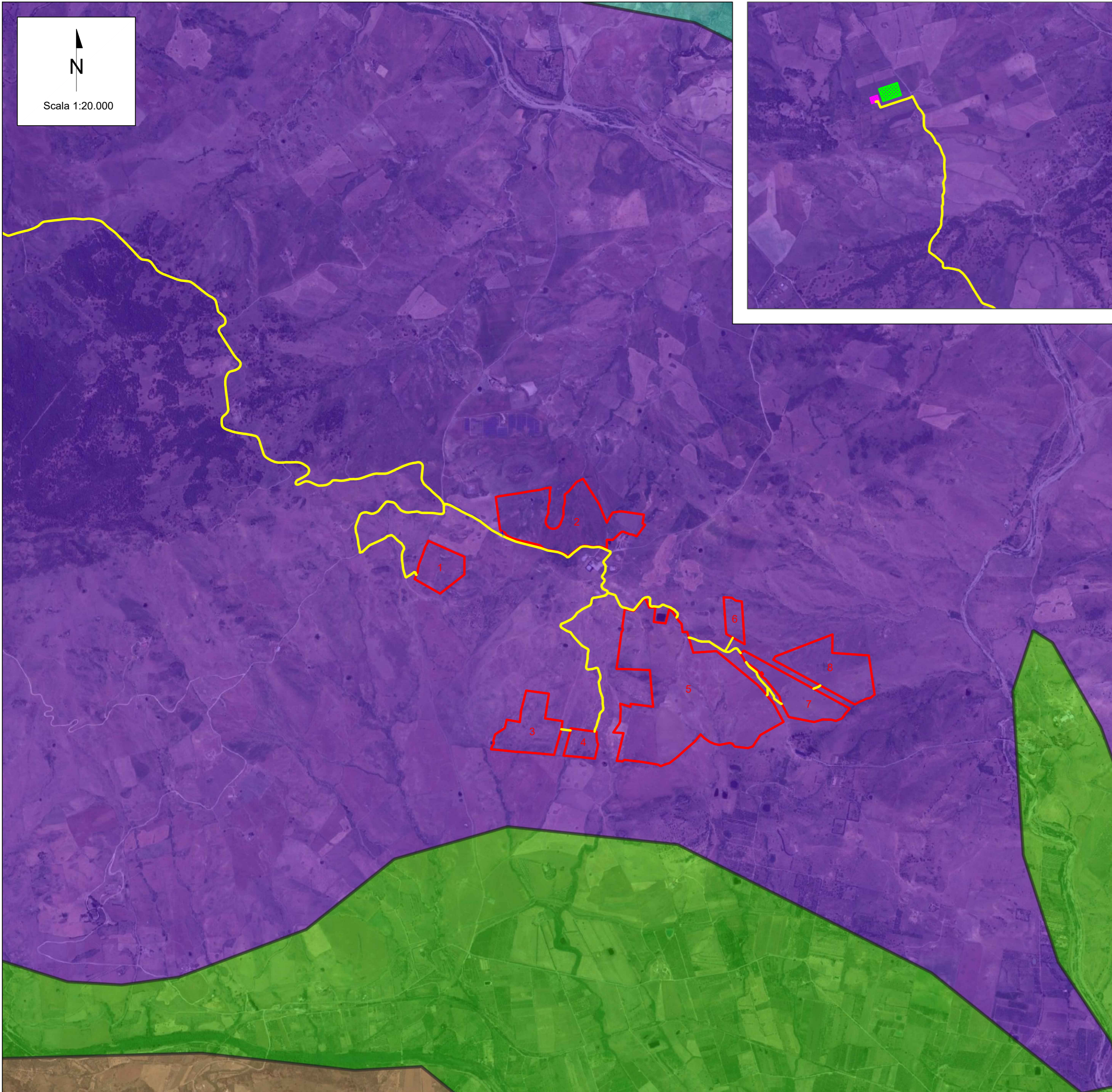



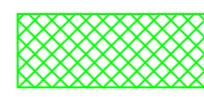
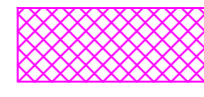


# CARTA DEGLI HABITAT







  
 Scala 1:20.000

## LEGENDA

-  Area di impianto
-  Cavidotto MT
-  SSE
-  CABINA MT/AT

## CARTA DEGLI HABITAT

-  Colline terrigene
-  Montagne terrigene
-  Colline argillose
-  Pianura di fondovalle
-  Rilievi terrigeni con penne e spine rocciose

00	20/12/2022	EMISSIONE	F.Perugino	M.Gallina	V.Bretti
REV.	DATE	DESCRIPTION	PREPARED	CHECKED	APPROVED

		<b>PROJECT:</b> Impianto di produzione di energia elettrica da fonte rinnovabile agrovoltica di potenza di picco pari a 64.688,50 kWp con sistema di accumulo integrato e relative opere di connessione alla rete RTN "TROINA"					
<b>CLIENT'S LOGO</b> TROINA SOLAR 2 S.R.L.		<b>CLASSIFICATION:</b> Company	<b>FORMAT:</b> A2	<b>SCALE:</b> 1:20.000	<b>PLOT SCALE:</b> 1:1	<b>SHEET:</b> 1 di / of 1	
<b>CLIENT VALIDATION</b>		<b>CARTA DEGLI HABITAT</b>					
VALIDATED BY:	VERIFIED BY:	COLLABORATORS:	<b>UTILIZATION SCOPE:</b> Basic Design	<b>CLIENT CODE</b>			
			IMP	GROUP	DOC	PROGRESSIVE	REVISION
			<b>TROINGTA V03800</b>				