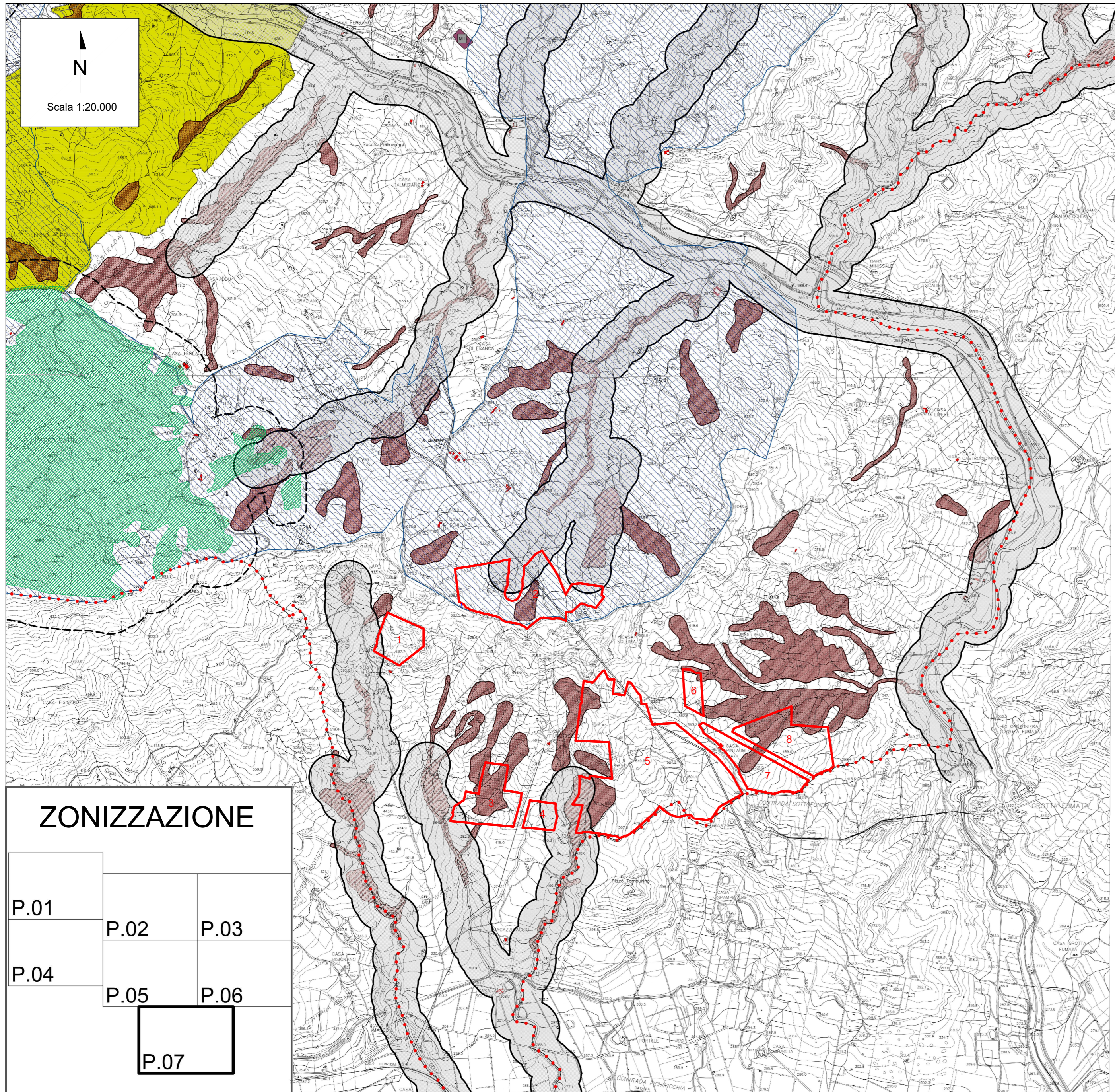



CARTA DELLA DISCIPLINA URBANISTICA COMUNALE

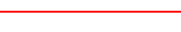




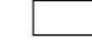




 Scala 1:20.000

ZONIZZAZIONE

P.01	P.02	P.03
P.04	P.05	P.06
	P.07	

LEGENDA

-  Area di impianto
-  Limiti amministrativi
-  Edifici isolati di interesse storico artistico
-  Fascia di rispetto laghi, fiumi e valloni (D.Lgs. 42/2004)
-  Aree soggette a pericolosità geologica (PAI, D.Arta 20 settembre 2006)
-  ZONA E1 (agricola produttiva)

00	20/12/2022	EMISSIONE			
REV.	DATE	DESCRIPTION	PREPARED	CHECKED	APPROVED
				M.Gallina	
				A.Fata	V.Bretti
CONTRACTOR'S LOGO		PROJECT: Impianto di produzione di energia elettrica da fonte rinnovabile agrovoltaiica di potenza di picco pari a 64.688,50 kWp con sistema di accumulo integrato e relative opere di connessione alla rete RTN "TROINA"			
		FILE NAME:			
CLIENT'S LOGO		CLASSIFICATION:	FORMAT:	SCALE:	PLOT SCALE:
TROINA SOLAR 2 S.R.L.		Company	A2	1:20.000	1:1
		TITLE:	CARTA DELLA DISCIPLINA URBANISTICA COMUNALE		
CLIENT VALIDATION					
VALIDATED BY:		UTILIZATION SCOPE:		CLIENT CODE	
VERIFIED BY:		Basic Design		IMP	GROUP
COLLABORATORS:				DOC	PROGRESSIVE
				REVISION	
		TROINGTAV04200			