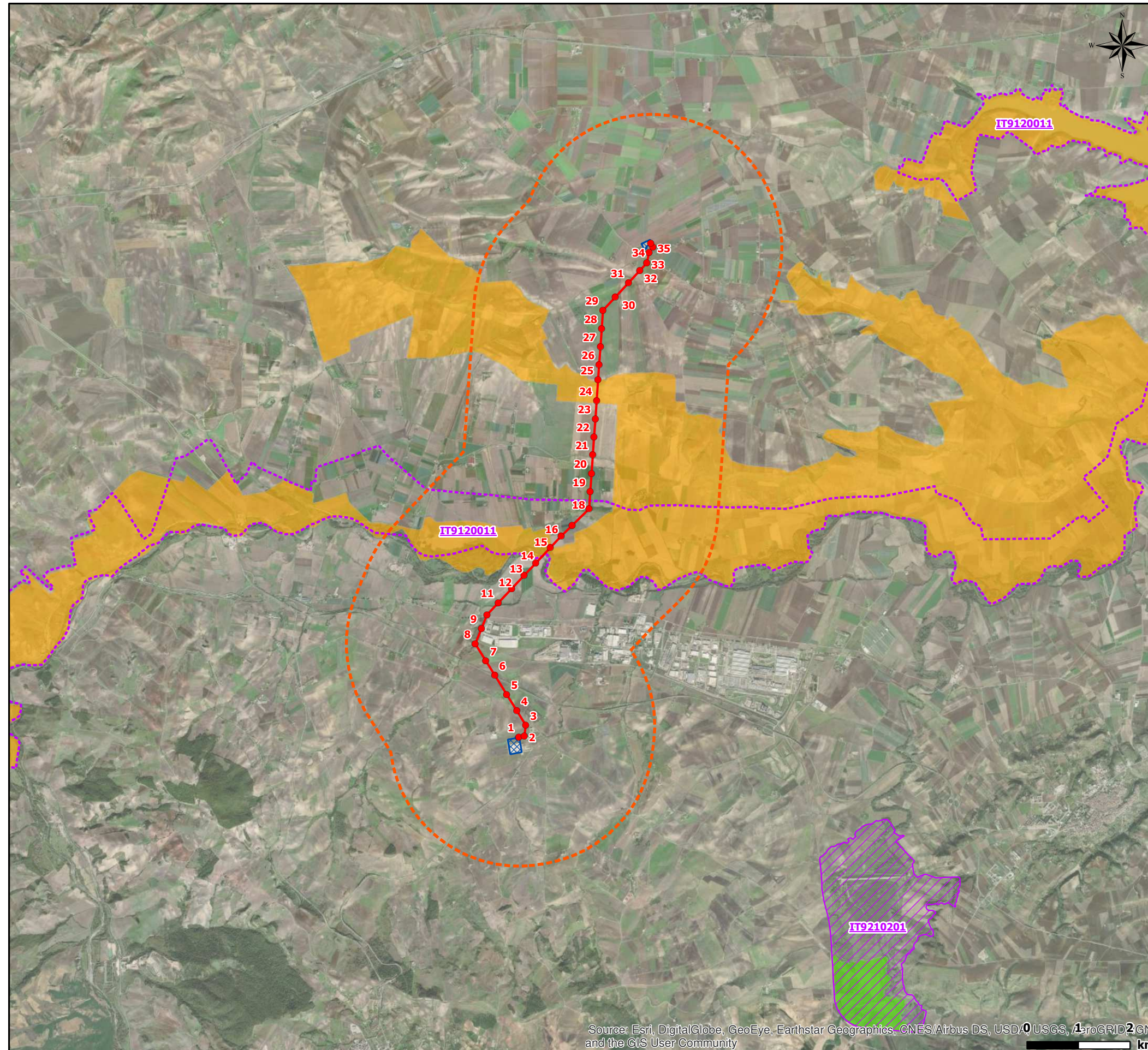






Figura 4.4.1a Area di Studio e Aree Naturali Protette





**LEGENDA**

-  Elettrodotto AT 150 kV "Melfi-Ascoli Satriano" in progetto
-  Stazione Elettrica esistente
-  Area di Studio (buffer 2,5 km)

**Rete Natura 2000 <sup>(1)</sup>**

-  ZSC IT9120011 "Valle Ofanto - Lago di Capaciotti"
-  ZSC-ZPS IT9210201 "Lago del Rendina"

**Altre aree naturali protette**

-  EUAP1195 "Parco naturale regionale Fiume Ofanto" <sup>(2)</sup>
-  Parco naturale Regionale del Vulture <sup>(3)</sup>

<sup>(1)</sup> Geoportale Nazionale (<http://www.pcn.minambiente.it/mattm/>)  
<sup>(2)</sup> Componenti delle aree protette e dei siti naturalistici - Piano Paesaggistico Territoriale Regionale (PPTR) della Puglia <https://www.paesaggiopuglia.it/pptr/tutti-gli-elaborati-del-pptr/il-sistema-delle-tutele.html>  
<sup>(3)</sup> WebGIS Tutele - Piano Paesaggistico Regionale della Basilicata <http://rsdi.regione.basilicata.it/viewGis/?project=5FCEE499-0BEB-FA86-7561-43913D3D1B65>