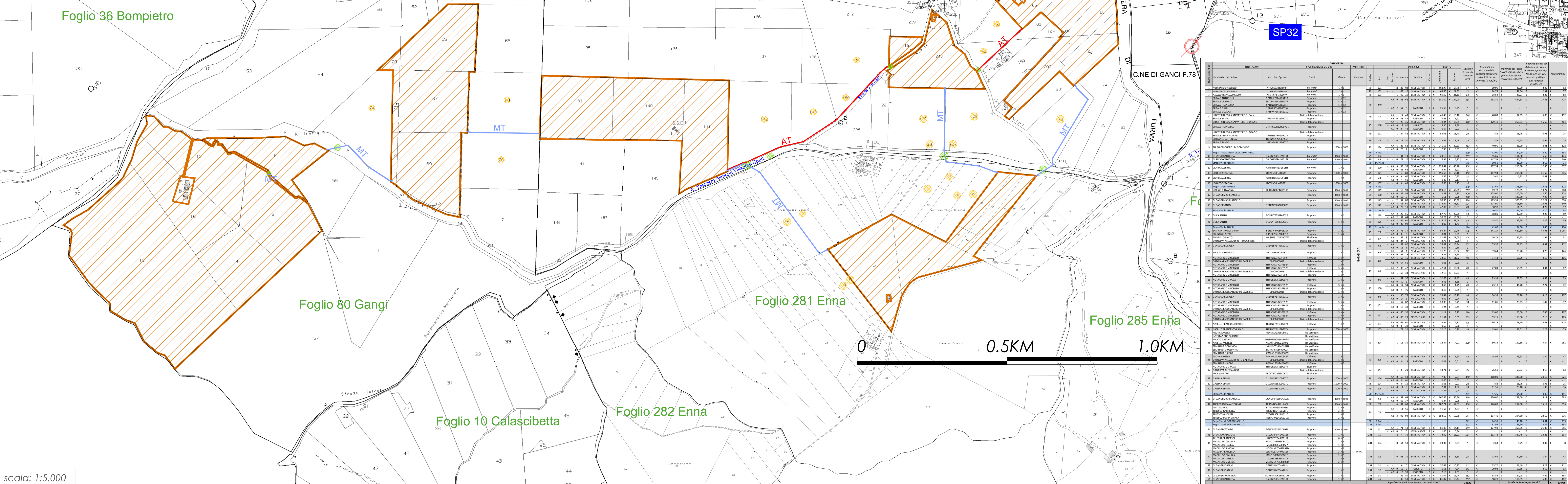
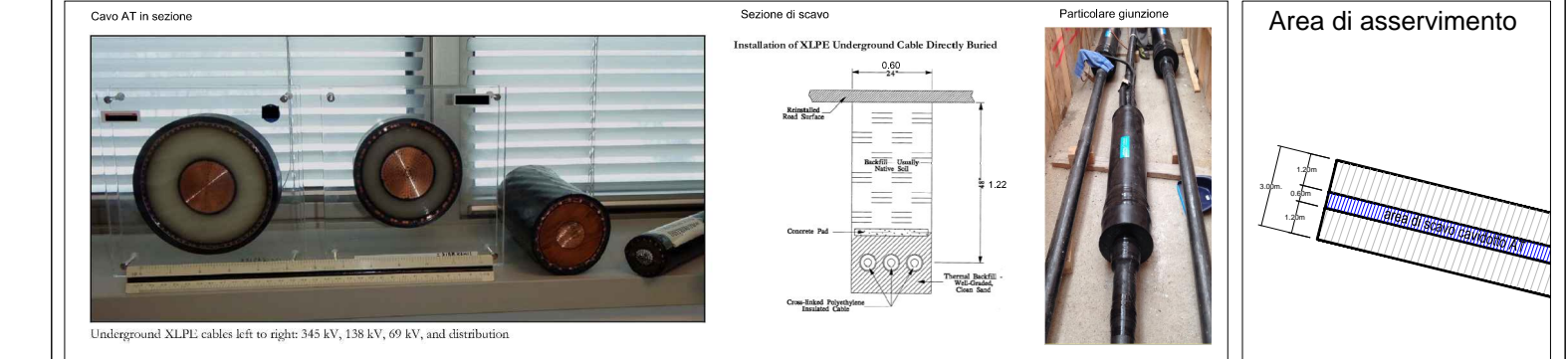
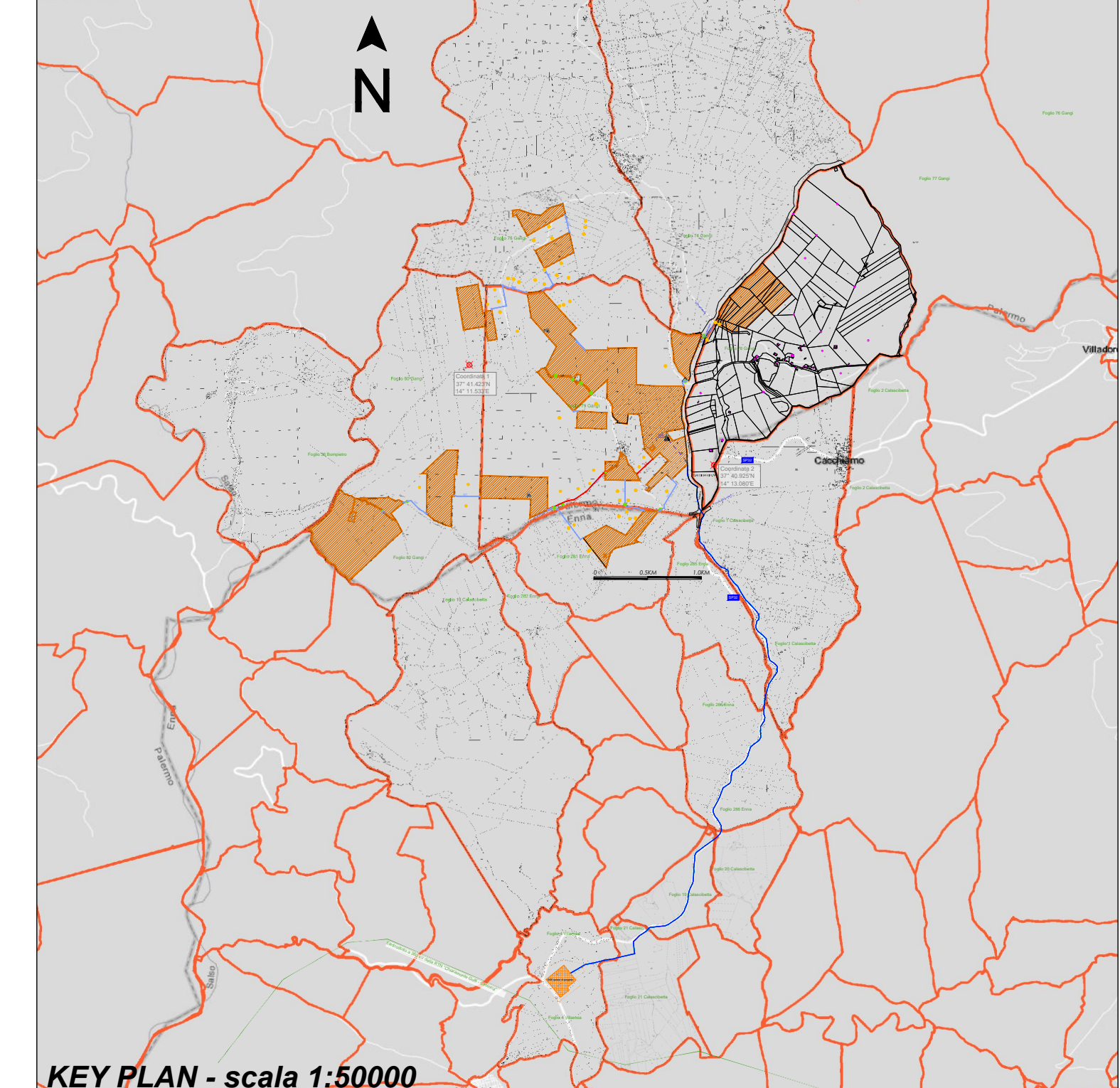
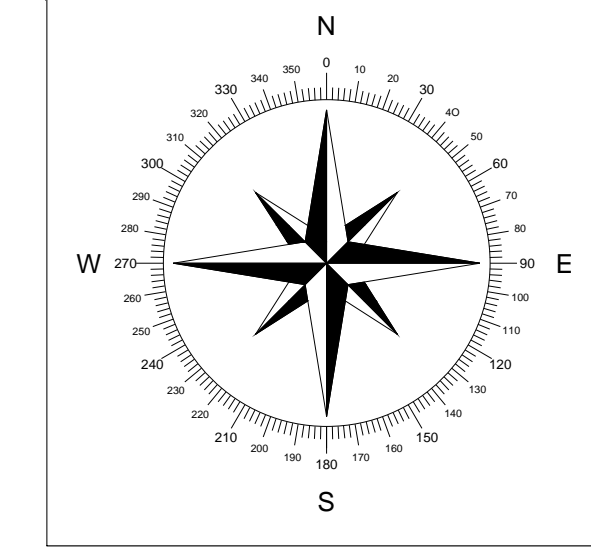


ELENCO PROPRIETA' ATTRAVERSADE DALLA LINEA DI CONNESSIONE					
Numero d'ordine	PARTICELLE			Tipo Linea	Superf. Servitu' (m²)
	Comune	Foglio	Part.	Linea AT Linea MT	
1	GANGI (PA)	79	101		57
2		79	102		71
3		79	103		53
4		79	240		664
5		79	35		140
6		79	190		370
7		79	191		23
8		79	36		23
9		79	114		117
10		79	R.Traz.		120
11		79	152		159
12		79	43		422
13		79	St.Vicin.		30
14		79	120		308
15		79	121		308
16		79	23		10
17		79	157		10
18		79	R.Traz.		279
19		79	149		257
20		79	150		490
21		79	143		530
22		79	142		683
23		79	St.Vicin.		30
24		79	128		54
25		79	125		54
26		79	St.Vicin.		120
27		79	73		975
1	ENNA	73	67		47
2		73	68		103
3		73	69		113
4		73	88		98
5		73	89		80
6		73	90		86
7		73	100		66
8		73	94		98
9		73	151		34
10		73	152		349
11		73	154		105
12		73	155		54
13		73	294		230
14		73	295		43
1		78	166		480
2		78	124		23
3		78	125		33
4		78	St.Vicin.		135
1		80	68		360
2		80	70		360
6		80	74		564
7		80	R.Traz.		213
1		281	R.Traz.		177
2		281	141		509
3		281	15		554
4		281	104		8
5		281	105		39
6	281	31		102	
7	281	32		86	
8	281	51		182	
9	281	45		167	



scala: 1:5.000



- LEGENDA**
- Area occupata dall'impianto
 - Linea AT connessione tra i campi
 - Linea MT connessione tra i campi
 - Particelle interessate dalla servitu'
 - Strade interessate dalla servitu'
 - Coordinate

REVISIONE	DATA	DESCRIZIONE	OPERAZIONE	PRODOTTORE	VERIFICATO	APPROVATO
1	21.10.2022
2	21.10.2022
3	21.10.2022
4	21.10.2022
5	21.10.2022
6	21.10.2022
7	21.10.2022
8	21.10.2022
9	21.10.2022
10	21.10.2022
11	21.10.2022
12	21.10.2022
13	21.10.2022
14	21.10.2022
15	21.10.2022
16	21.10.2022
17	21.10.2022
18	21.10.2022
19	21.10.2022
20	21.10.2022
21	21.10.2022
22	21.10.2022
23	21.10.2022
24	21.10.2022
25	21.10.2022
26	21.10.2022
27	21.10.2022
28	21.10.2022
29	21.10.2022
30	21.10.2022
31	21.10.2022
32	21.10.2022
33	21.10.2022
34	21.10.2022
35	21.10.2022
36	21.10.2022
37	21.10.2022
38	21.10.2022
39	21.10.2022
40	21.10.2022
41	21.10.2022
42	21.10.2022
43	21.10.2022
44	21.10.2022
45	21.10.2022
46	21.10.2022
47	21.10.2022
48	21.10.2022
49	21.10.2022
50	21.10.2022
51	21.10.2022
52	21.10.2022
53	21.10.2022
54	21.10.2022
55	21.10.2022
56	21.10.2022
57	21.10.2022
58	21.10.2022
59	21.10.2022
60	21.10.2022
61	21.10.2022
62	21.10.2022
63	21.10.2022
64	21.10.2022
65	21.10.2022
66	21.10.2022
67	21.10.2022
68	21.10.2022
69	21.10.2022
70	21.10.2022
71	21.10.2022
72	21.10.2022
73	21.10.2022
74	21.10.2022
75	21.10.2022
76	21.10.2022
77	21.10.2022
78	21.10.2022
79	21.10.2022
80	21.10.2022
81	21.10.2022
82	21.10.2022
83	21.10.2022
84	21.10.2022
85	21.10.2022
86	21.10.2022
87	21.10.2022
88	21.10.2022
89	21.10.2022
90	21.10.2022
91	21.10.2022
92	21.10.2022
93	21.10.2022
94	21.10.2022
95	21.10.2022
96	21.10.2022
97	21.10.2022
98	21.10.2022
99	21.10.2022
100	21.10.2022

ALTA CAPITAL12

Alta Capital 12 S.r.l.
Via Ettore De Sonnaz, 19
10121 Torino (TO)
P.Iva 12531540016
PEC altacapital12.pec@maildoc.it

Progettista
ID&A Industrial Designers and Architects S.r.l.
via Cadore, 45
20038 Seregno (MB)
p.iva 07242770969
PEC ideaplant@pec.it; mail info@ideaplant.biz

Progetto per la realizzazione di un impianto agrivoltaico integrato ecocompatibile "Bordonaro" da 130 MWp, a Gangi 90024 (PA).

Elaborati del Progetto Definitivo

Linea di connessione in AT e MT tra i campi agrivoltaici	Revisione n.	data	aggiornamenti
	1		
	2		
	3		

Ipotesi di tracciato su mappe catastali con PPE

nome file: rs.06.epd.0027.a.0_linea at mt su cat. 00.2.dwg

data	nome	firma
21.10.2022	Facco	
21.10.2022	Fabrone	
21.10.2022	Speciale	

RS 06 EPD
0027 A0
DATA 21.10.2022 scala 1:5000