

REGIONE BASILICATA  
 PROVINCIA DI POTENZA  
 COMUNE DI VENOSA



PROGETTO DELL'IMPIANTO AGRIVOLTAICO E DELLE RELATIVE  
 OPERE DI CONNESSIONE DA REALIZZARE NEL  
 COMUNE DI VENOSA IN LOCALITÀ BOREANO  
 DI POTENZA PARI A 19.996,20 kW<sub>p</sub> (19.993,87 kW IN IMMISSIONE)  
 DENOMINATO "AGRIVOLTAICO VENOSA BOREANO"

PROGETTO DEFINITIVO

PARTICOLARI CABINE E LOCALI IMPIANTO



livello prog.	Cod.	tipo doc.	N° elaborato	N° foglio	Tot. fogli	NOME FILE	DATA	SCALA
PD	202102255	D	C10			AGRIVEN_C10	20/12/2022	1:200

REVISIONI					
REV.	DATA	DESCRIZIONE	ESEGUITO	VERIFICATO	APPROVATO

PROPONENTE:

**EDISON RINNOVABILI S.P.A.**  
 Foro Buonaparte 31 - 20121 Milano (MI)  
 P.IVA n. 12921540154 / REA MI-1595386



TIMBRO ENTE

PROGETTAZIONE:

**HORIZONFIRM**

Ing. D. Siracusa  
 Ing. A. Costantino  
 Ing. C. Chiaruzzi  
 Ing. G. Schillaci  
 Ing. G. Buffa  
 Ing. M.C. Musca

Arch. M. Gullo  
 Arch. S. Martorana  
 Arch. F. G. Mazzola  
 Arch. A. Calandrino  
 Arch. G. Vella

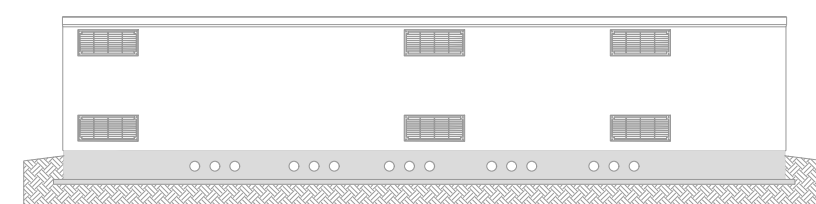
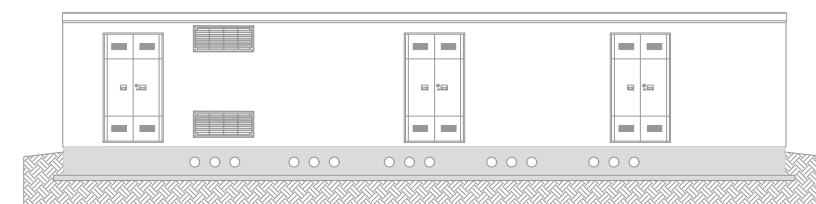
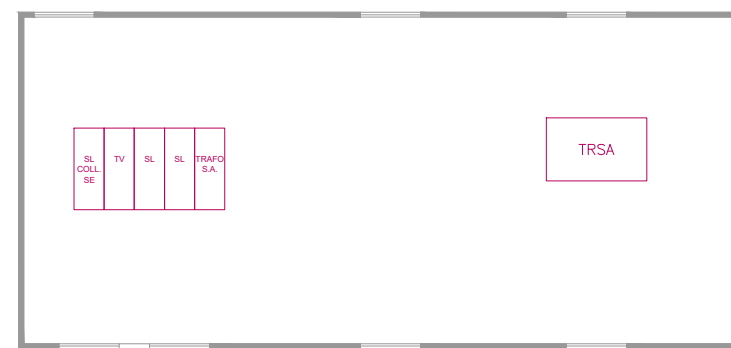
FIRMA DIGITALE PROGETTISTA



FIRMA PROGETTISTA

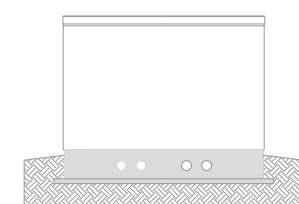
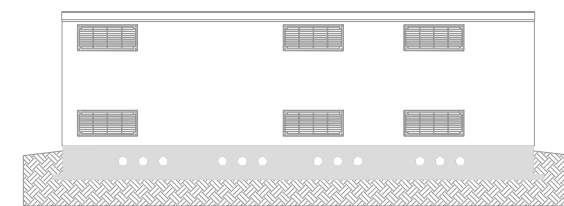
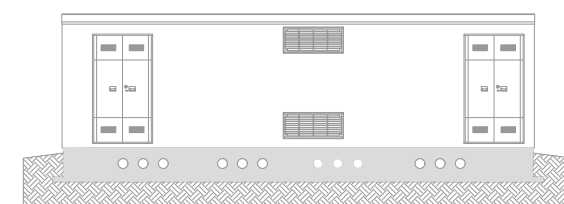
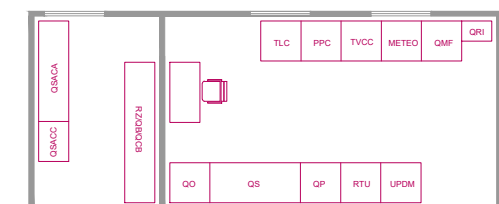
### Locale Quadro 36 kV

Cabina in C.A.V. mm 6700x14400x2700



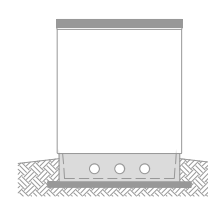
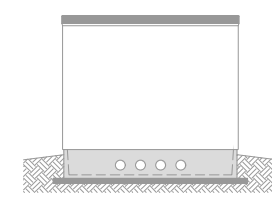
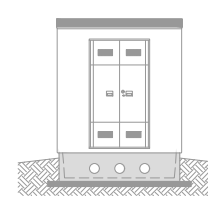
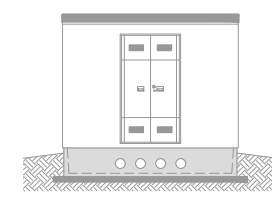
### Locale B.T. + Comando e Controllo

Cabina monoblocco in C.A.V. mm 4000x9400x2600



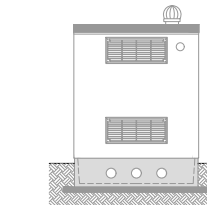
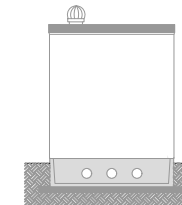
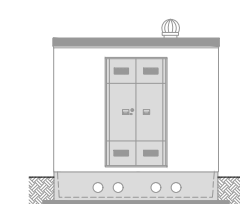
### Locale G.E.

Cabina monoblocco in C.A.V.  
 mm 2480x3500x2660



### Locale Servizi Ausiliari

Cabina monoblocco in C.A.V.  
 mm 2480x3280x2660



### Locali Conversione Trasformazione e Locali Tecnici

Container Highcube 40'

