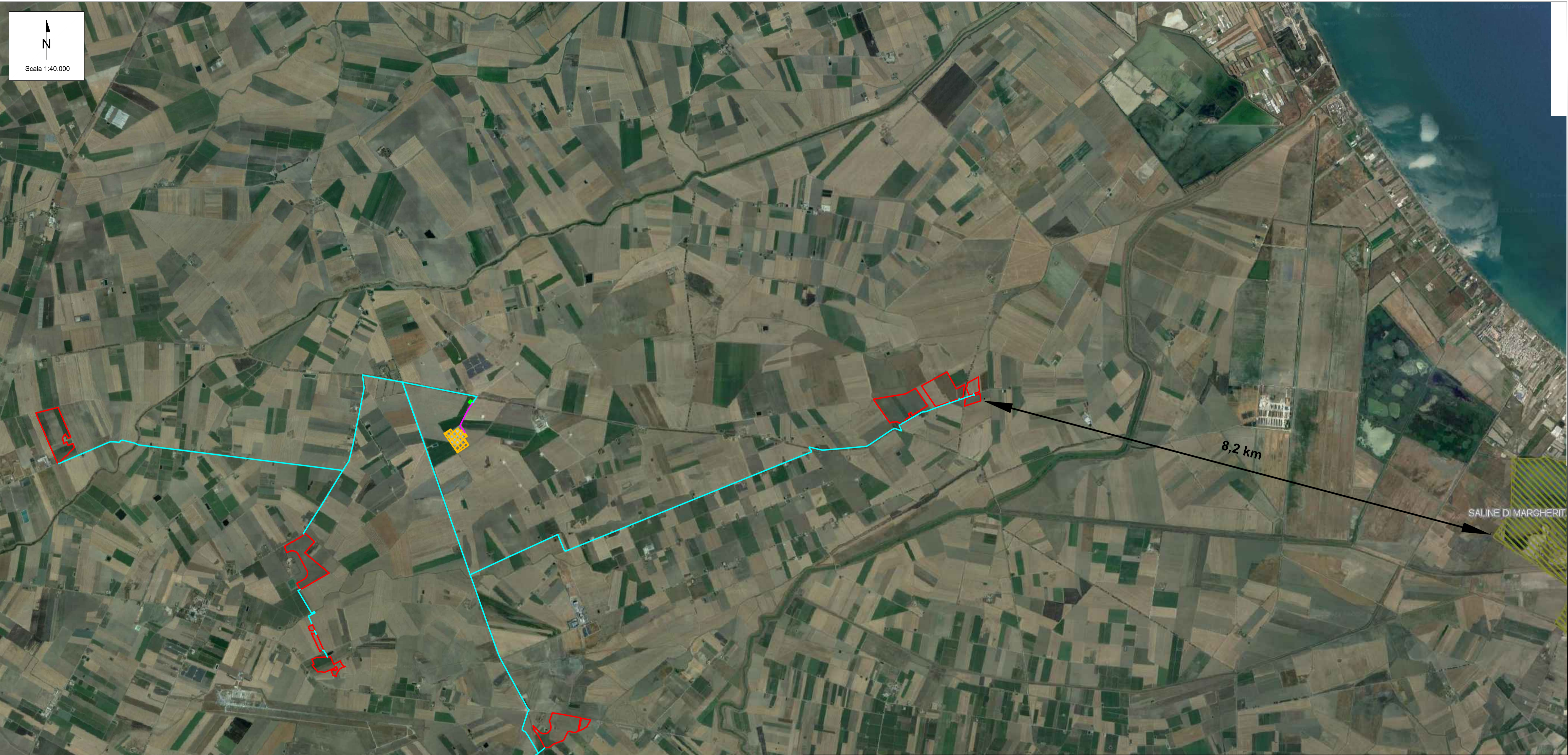




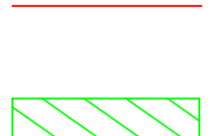




# CARTA VINCOLI NAZIONALI - AREE RAMSAR




  
 N  
 Scala 1:40.000

LEGENDA	
	Cavidotto MT
	Cavidotto AT
	Area di impianto
	SEU
	SE Manfredonia 380/150 kV
	RAMSAR

REV	DATE	DESCRIPTION	PREPARED	CHECKED	APPROVED
00	07/02/2023	Emissione Definitiva	F.Perugno	A.Fata	V.Bretti

	<b>PROGETTO:</b> <i>Progetto di un impianto agrivoltaico della potenza complessiva di 103.314,00 kWp con sistema di accumulo di capacità pari a 20 MW e relative opere di connessione alla rete. Da realizzarsi nei Comuni di Foggia, Manfredonia (FG) e Zapponeta (FG)</i>														
	<b>FILE NAME:</b> FOM.ENG.TAV.011.00_CARTA DEI VINCOLI NAZIONALI-AREE PROTETTE E SITI NATURALISTICI.DWG														
<b>CLIENT'S CODE:</b> Foggia Solar S.r.l.	<b>CLASSIFICATION:</b> Company	<b>FORMAT:</b> A1	<b>SCALE:</b> 1:40.000	<b>PLOT SCALE:</b> 1:1	<b>SHEET:</b> 3 di / of 3										
<b>CLIENT VALIDATION</b> Carta dei Vincoli Nazionali Aree protette e Siti Naturalistici															
<b>VALIDATED BY:</b>  <b>VERIFIED BY:</b>  <b>COLLABORATORS:</b>	<b>UTILIZATION SCOPE:</b> Basic Design	<b>CLIENT CODE</b> <table border="1"> <tr> <td>IMP</td> <td>GROUP</td> <td>DOC</td> <td>PROGRESSIVE</td> <td>REVISION</td> </tr> <tr> <td colspan="5" style="text-align: center;"> <b>FOM   ENG TAV   011   00</b> </td> </tr> </table>				IMP	GROUP	DOC	PROGRESSIVE	REVISION	<b>FOM   ENG TAV   011   00</b>				
IMP	GROUP	DOC	PROGRESSIVE	REVISION											
<b>FOM   ENG TAV   011   00</b>															