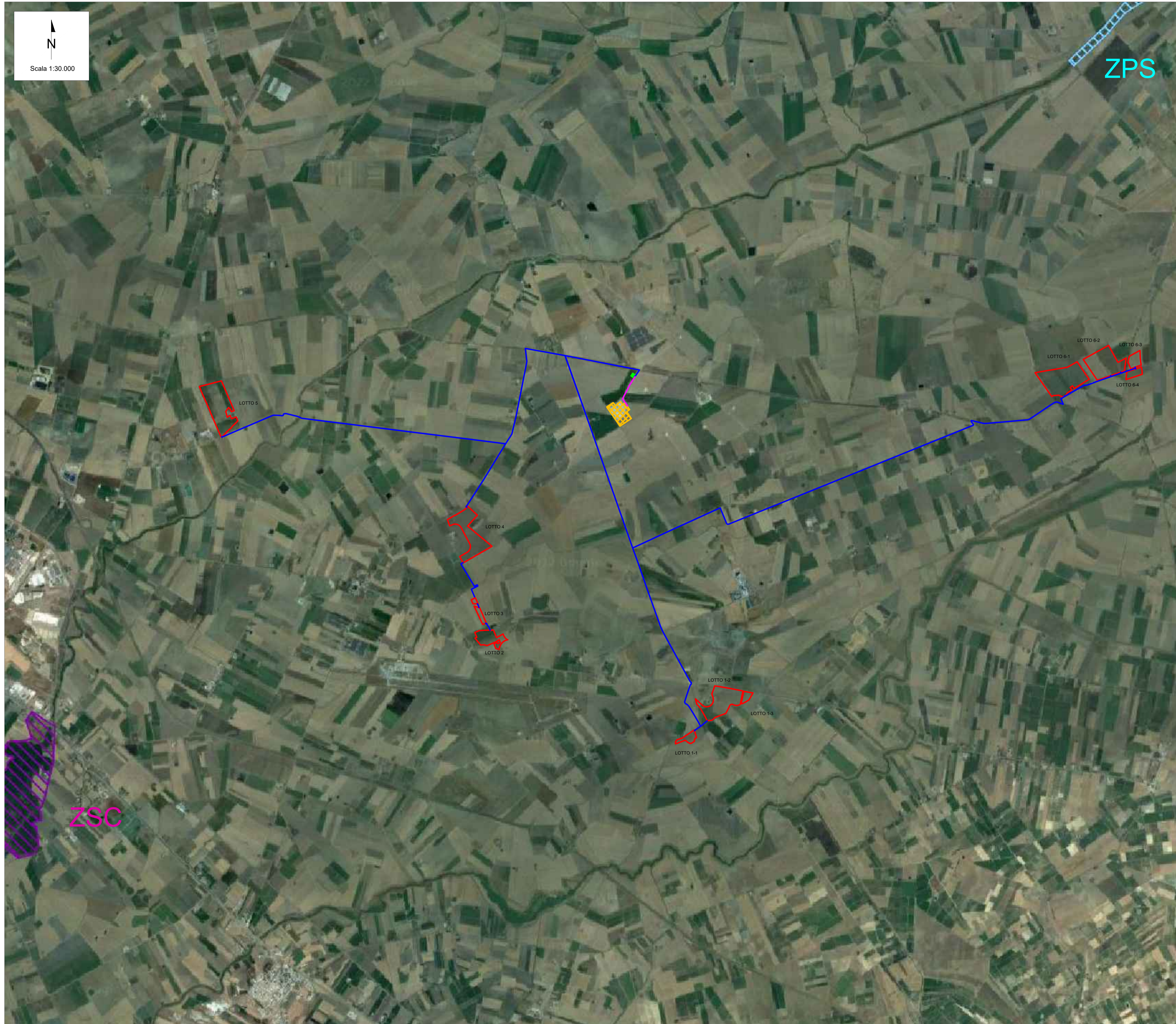



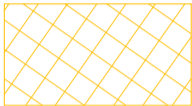
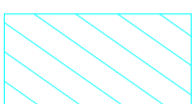




CARTA DELLE AREE PROTETTE E NATURA 2000




 N
 Scala 1:30.000

LEGENDA

-  Cavidotto MT
-  Cavidotto AT
-  Area di impianto
-  SEU
-  SE Manfredonia 380/150 kV
-  ZPS
-  ZSC

00	07/02/2023	Emissione Definitiva	F.Perugino	A.Fata	V.Bretti				
REV.	DATE	DESCRIPTION	PREPARED	CHECKED	APPROVED				
		PROJECT: Progetto di un impianto agrivoltaico della potenza complessiva di 103.314,00 kWp con sistema di accumulo di capacità pari a 20 MW e relative opere di connessione alla rete. Da realizzarsi nei Comuni di Foggia, Manfredonia (FG) e Zapponeta (FG)							
CLIENT'S LOGO Foggia Solar S.r.l.		FILE NAME: FOM.ENG.TAV.019.00 CARTA DELLE AREE PROTETTE E RETE NATURA 2000.DWG							
CLIENT VALIDATION		CLASSIFICATION: Company	FORMAT: A1	SCALE: 1:30.000	PLOT SCALE: 1:1	SHEET: 1 di / of 1			
VALIDATED BY:		Carta delle aree protette e rete Natura 2000							
VERIFIED BY:		UTILIZATION SCOPE: Basic Design		CLIENT CODE					
COLLABORATORS:				IMP	GROUP	DOC	PROGRESSIVE	REVISION	FOM.ENG.TAV.019.00
This document is property of Foggia Solar S.r.l. It is strictly forbidden to reproduce this document, in whole or in part, and to provide to others any related information without the previous written consent by Foggia Solar S.r.l.									