



IMPIANTO FOTOVOLTAICO CAPOTERRA

COMUNE DI CAPOTERRA

PROPONENTE



EDISON RINNOVABILI spa
Foro Buonaparte, 31
20121 Milano MI

VALUTAZIONE DI IMPATTO AMBIENTALE

CODICE ELABORATO

OGGETTO:
Componenti - sezioni e prospetti

**PD
Tav03**

COORDINAMENTO

GRUPPO DI LAVORO PD



Studio Tecnico Dott. Ing Bruno Manca

- Dott.ssa Geol. Cosima Atzori
- Dott. Giulio Casu
- Dott.ssa Ing. Silvia Exana
- Dott.ssa Ing. Ilaria Giovagnorio
- Dott. Ing Bruno Manca
- Dott.ssa Ing. Alessandra Scalas

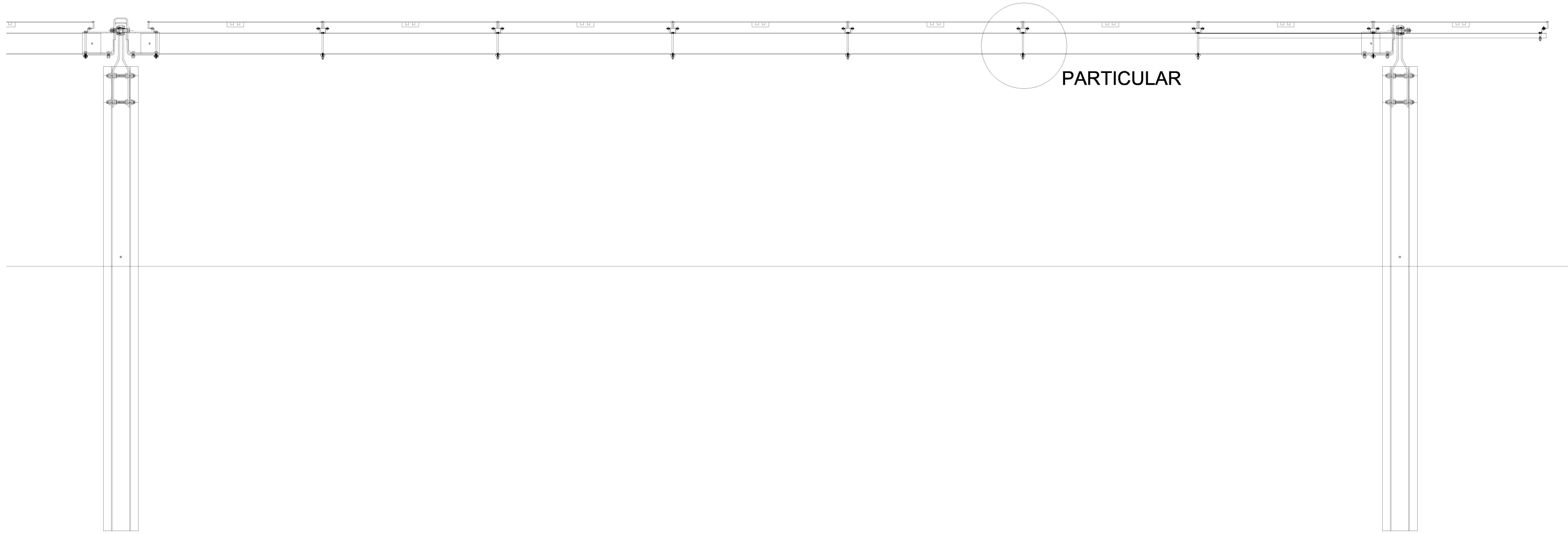
REDATTORE

- Dott.ssa Ing. Ilaria Giovagnorio
- Dott.ssa Ing. Silvia Exana
- Dott. Ing. Luca Salvadori
- Dott Ing. Bruno Manca

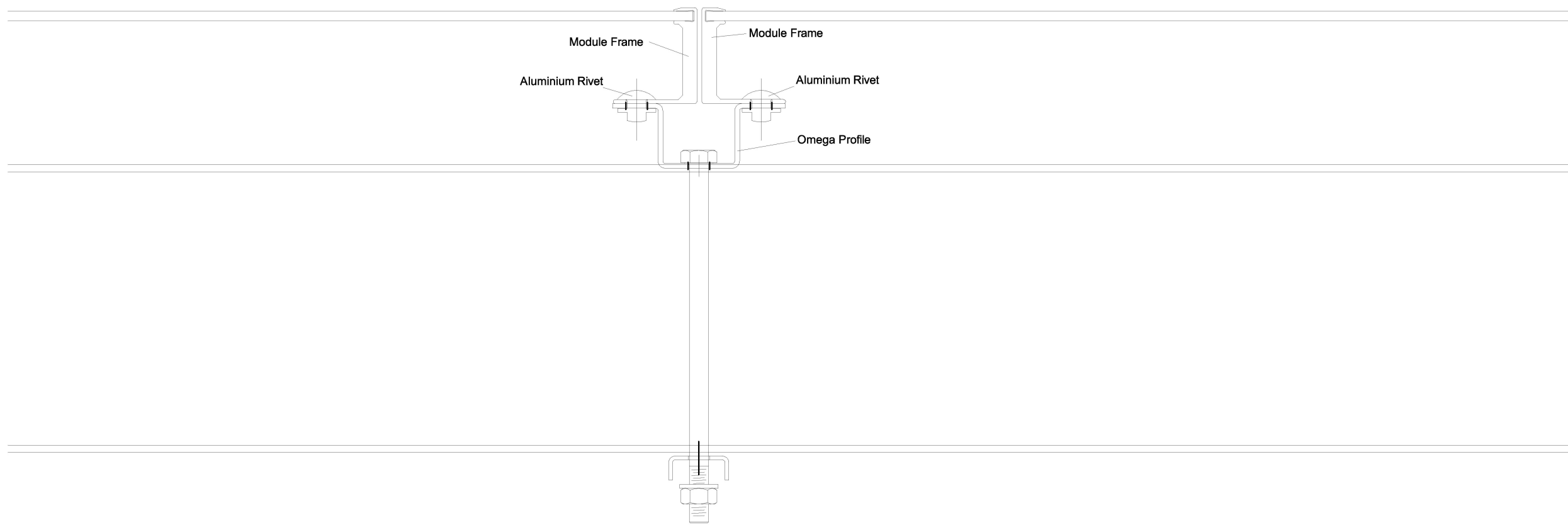
REV.	DATA	DESCRIZIONE REVISIONE
00	Settembre 2022	Prima emissione

FORMATO
ISO A4 - 297 x 210

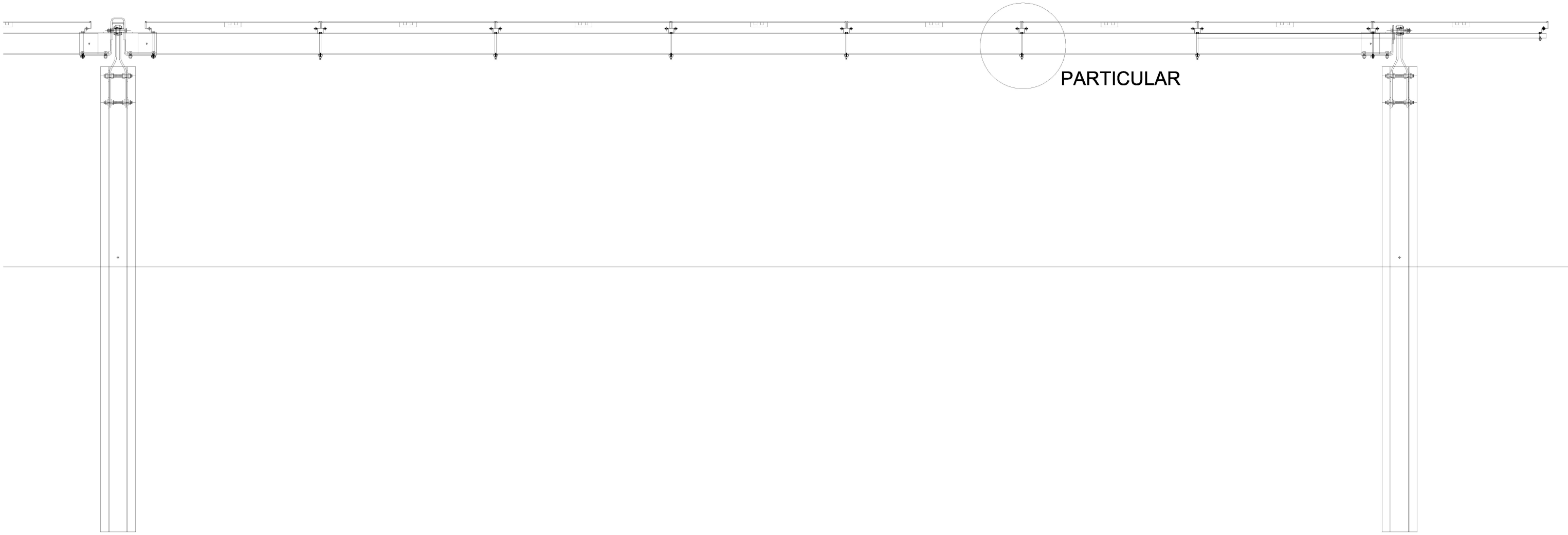
Particolari sistema Tracker monoassiale



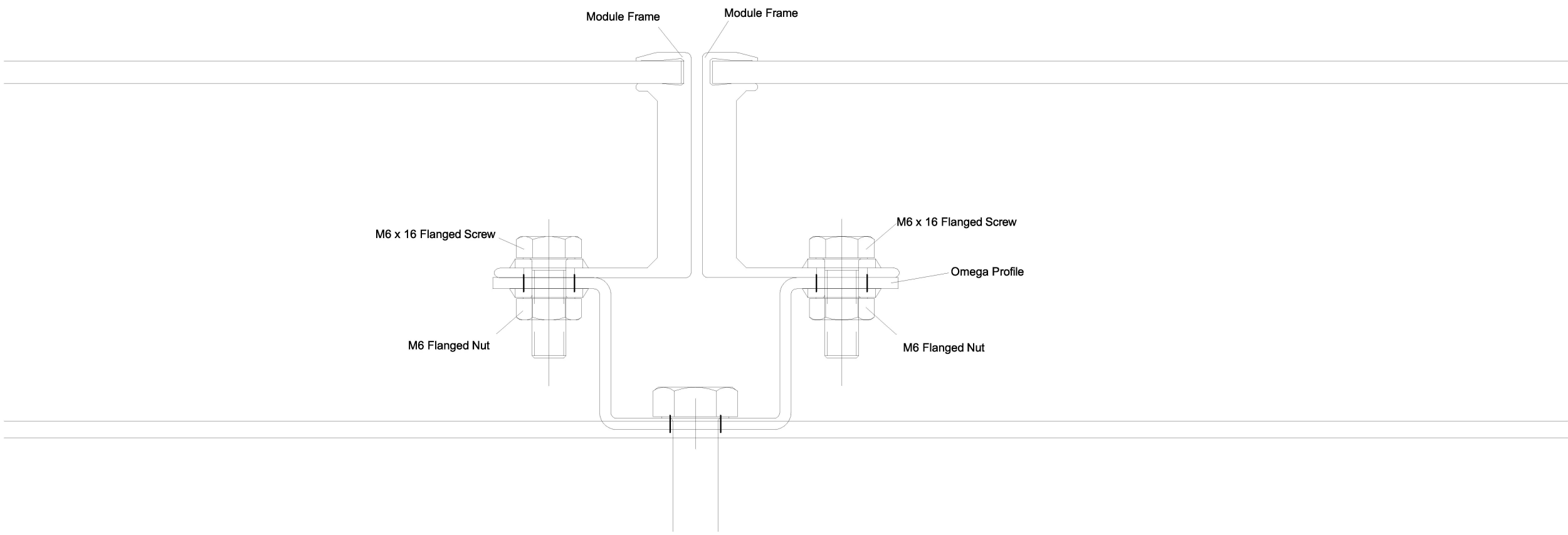
PARTICULAR



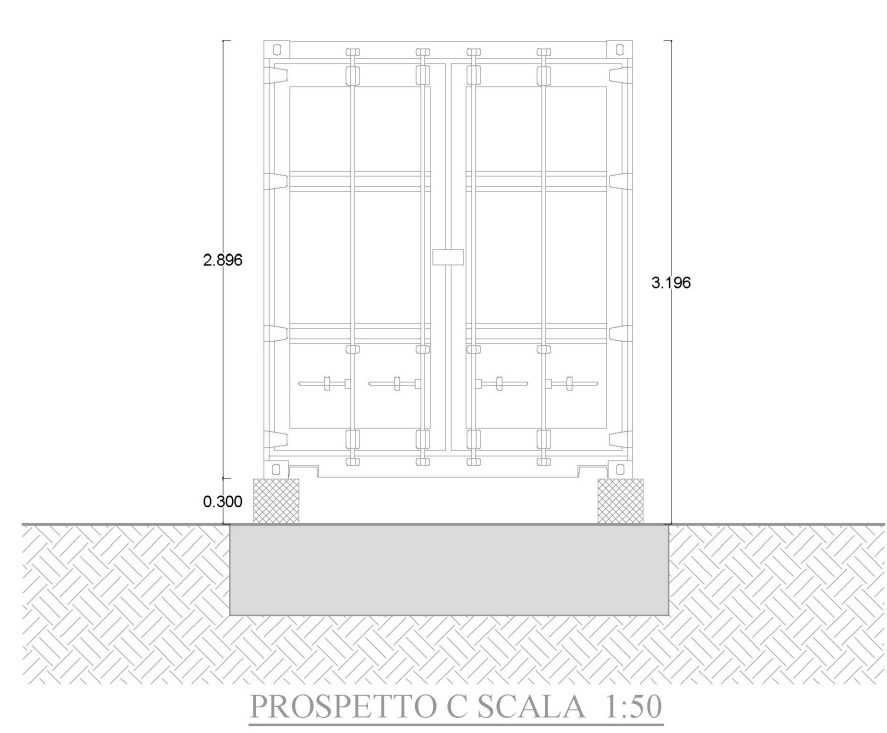
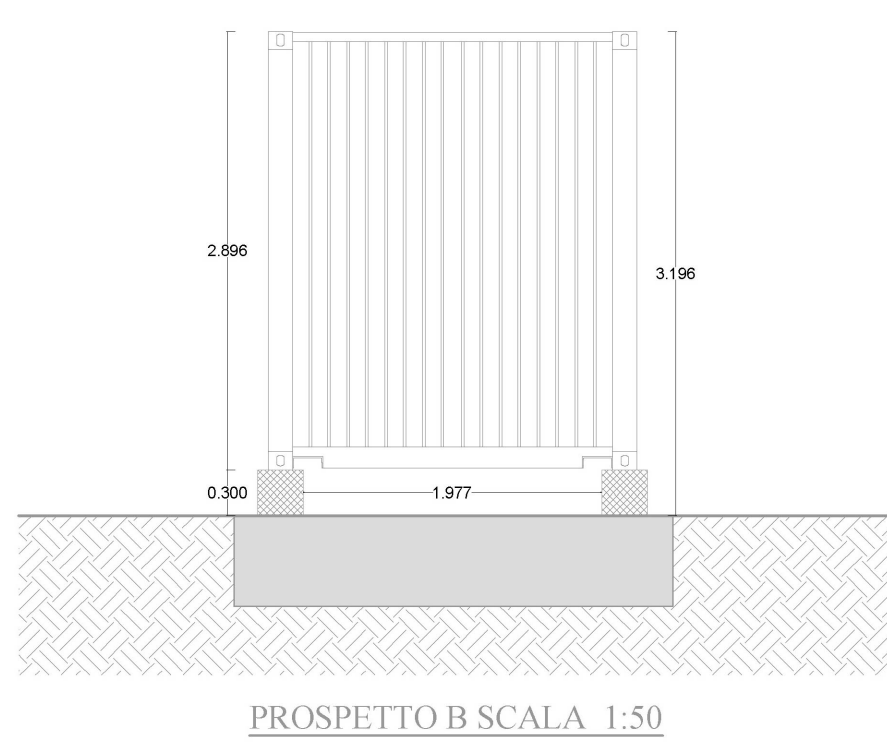
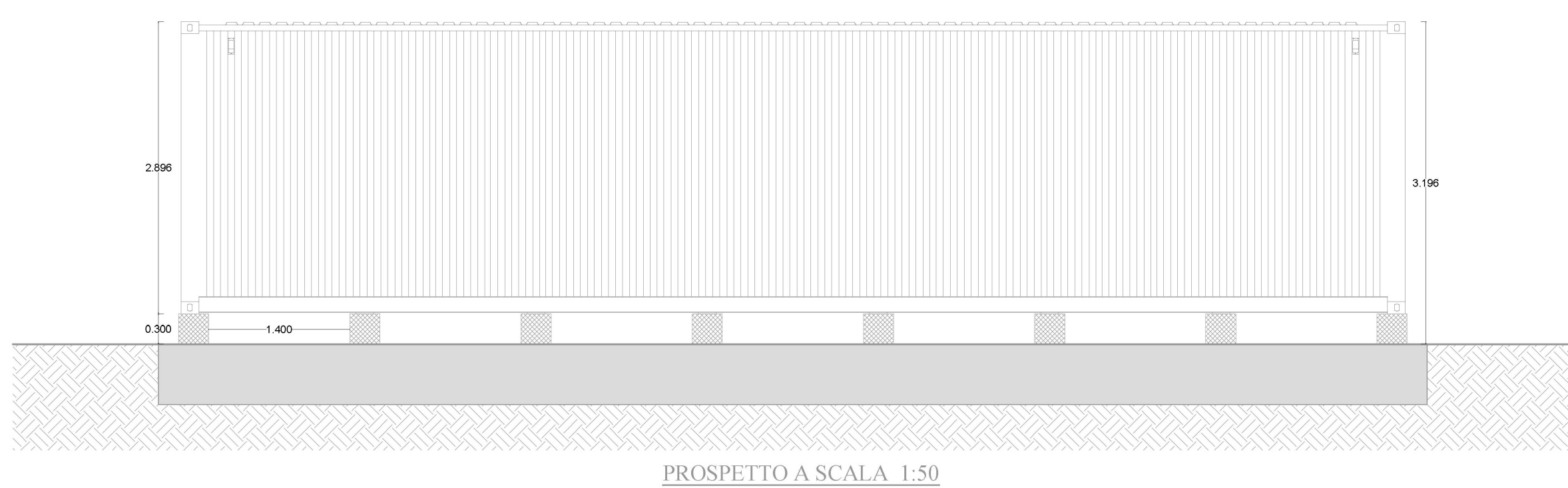
Particolari sistema Tracker monoassiale



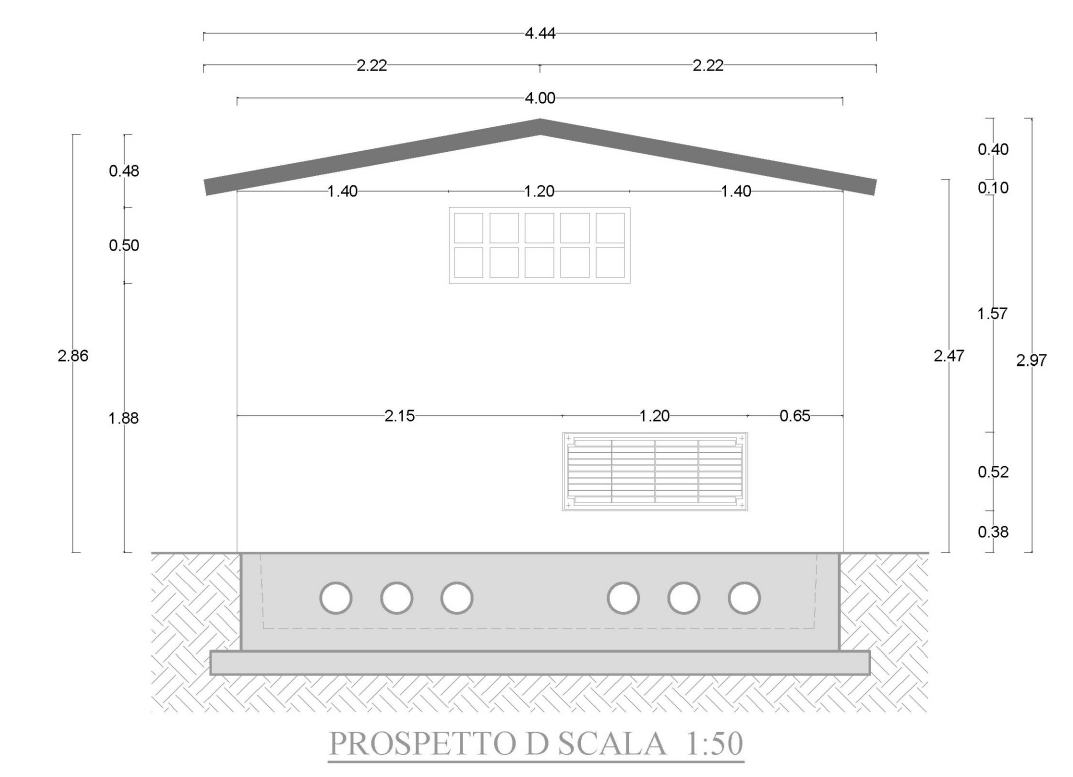
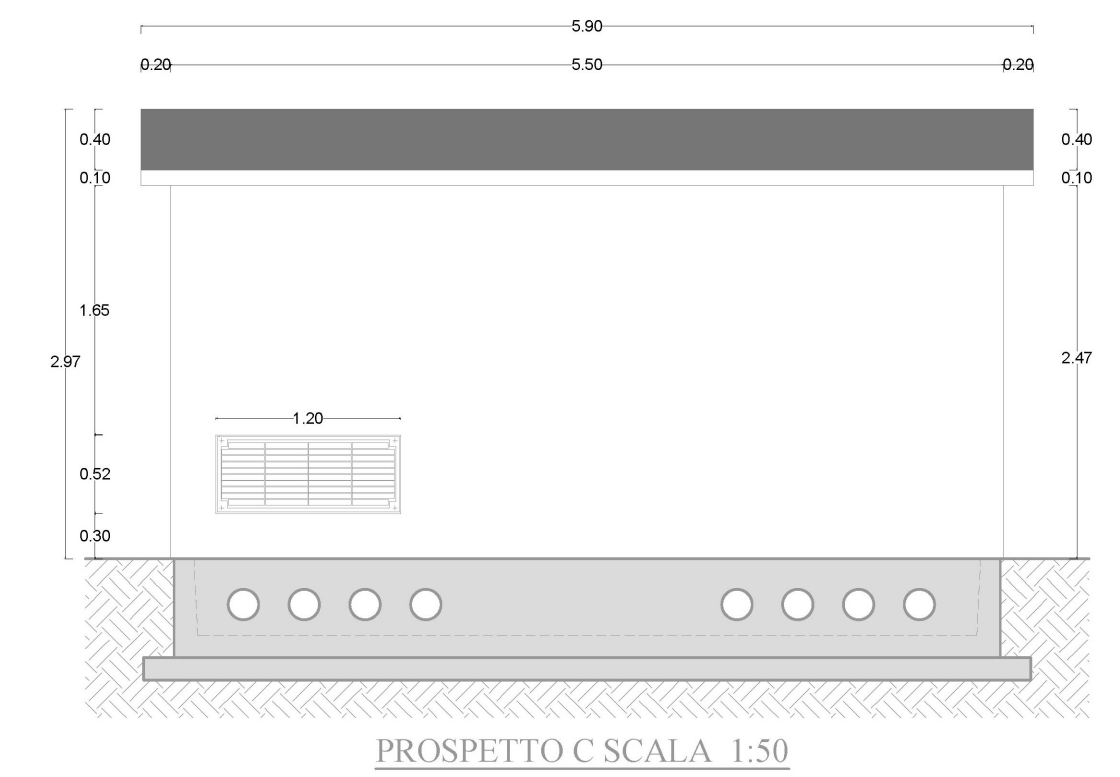
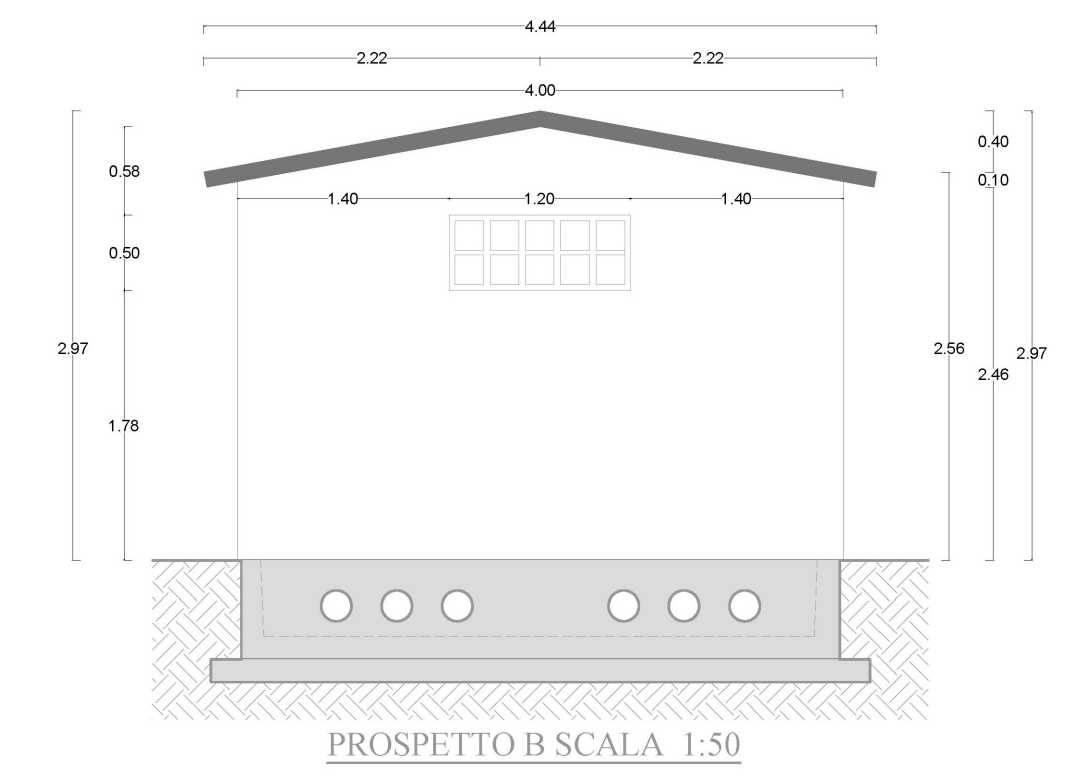
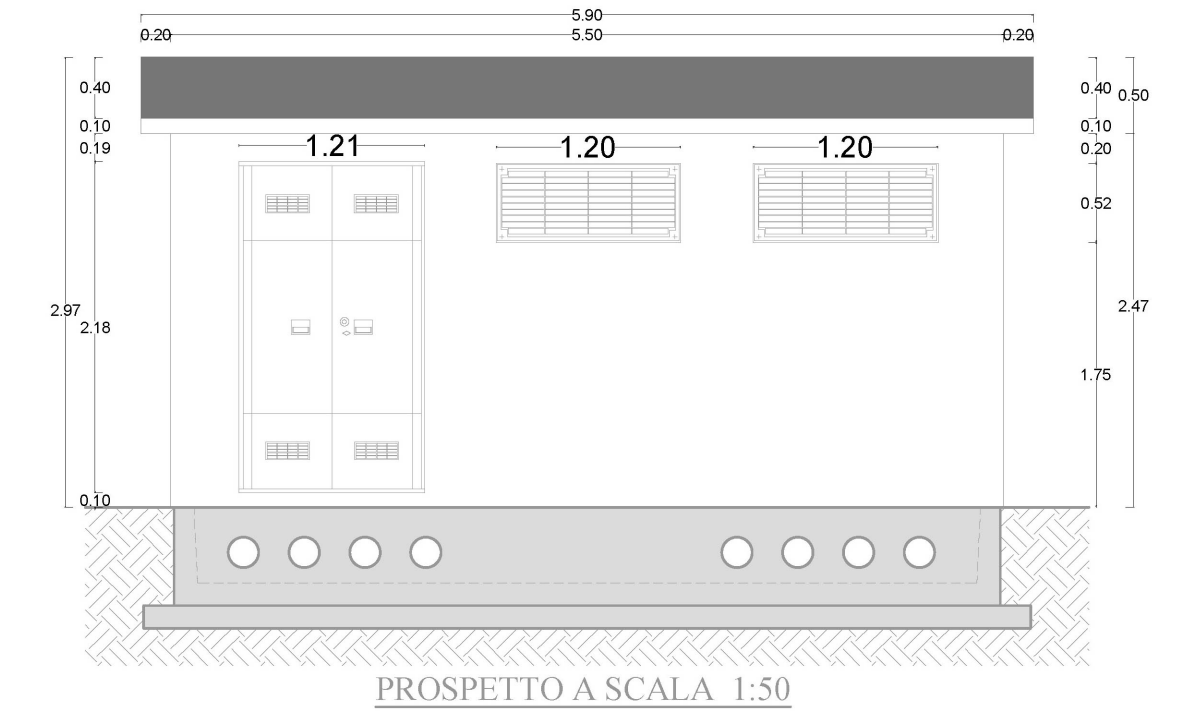
PARTICULAR



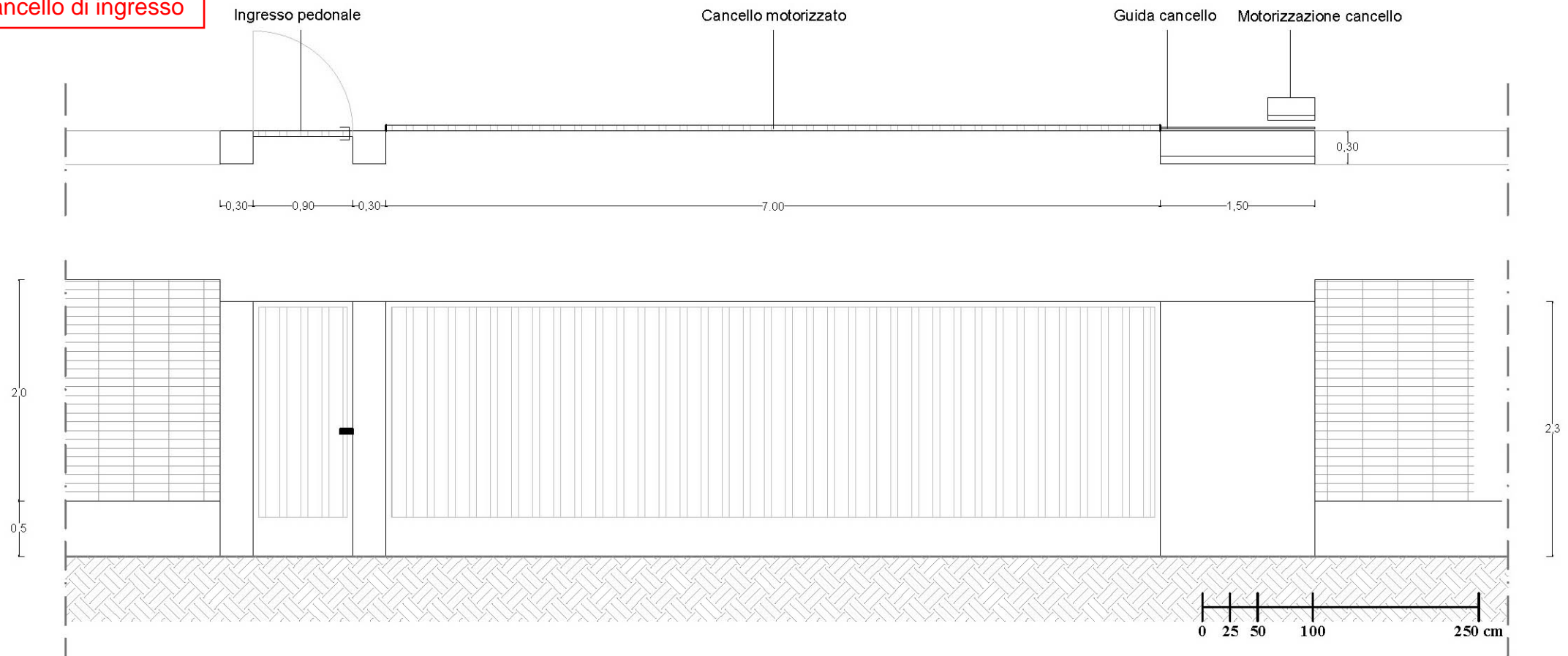
CONTAINER 40' HIGH CUBE
UTILIZZATO PER POWER STATION E LOCALE DI RACCOLTA



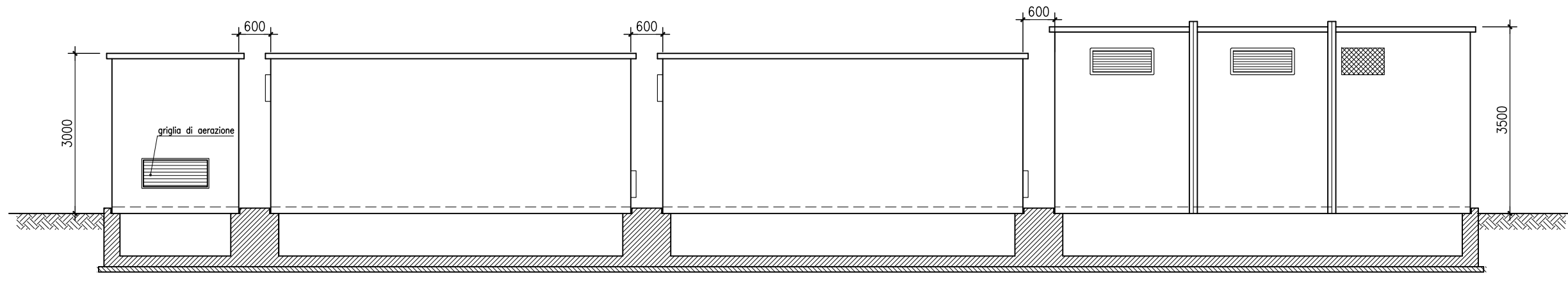
CABINA A PANNELLI IN C.A.V.
UTILIZZATA PER CABINA LOCALE TECNICO



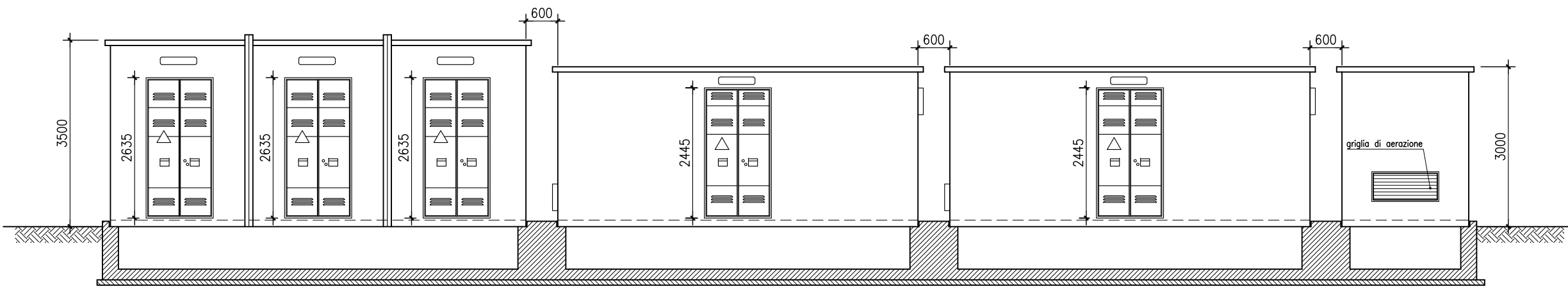
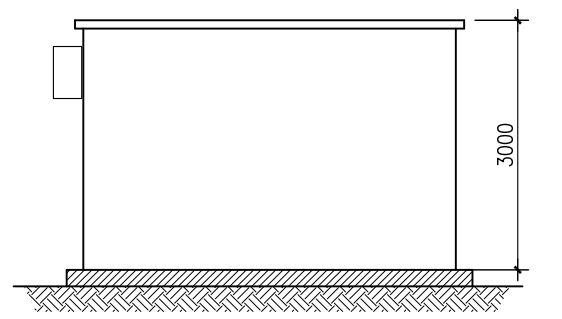
Tipico Cancellone di ingresso



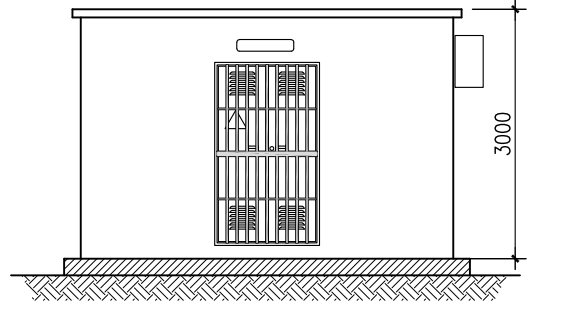
PARTICOLARE DEL CANCELLO D'INGRESSO ALL'IMPIANTO - SCALA 1:50



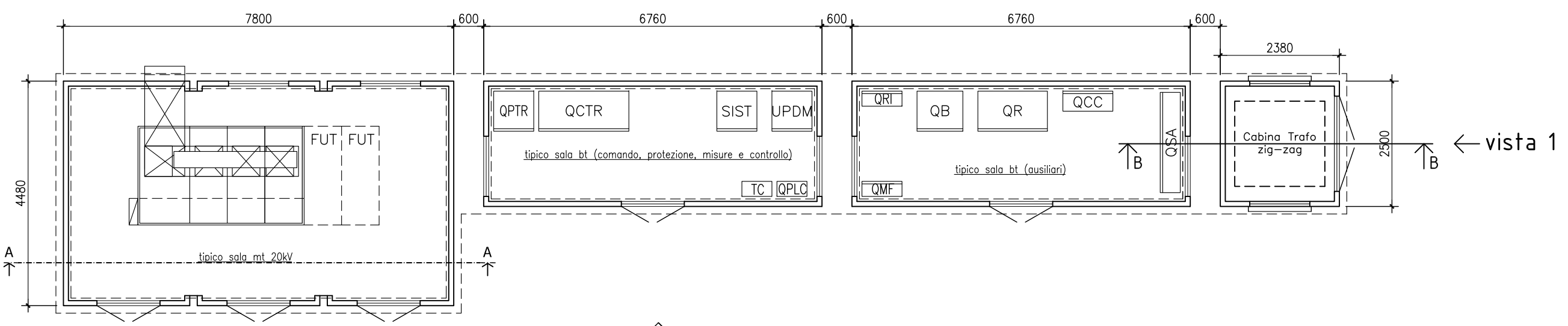
vista B



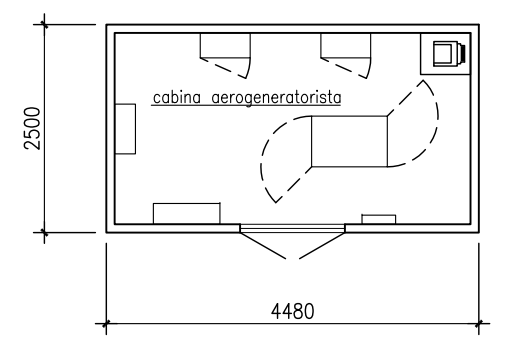
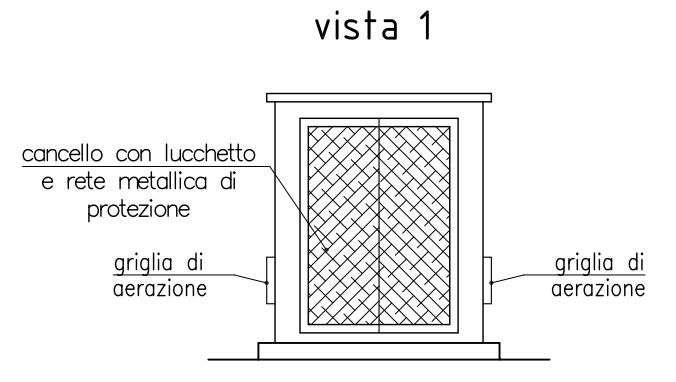
vista A



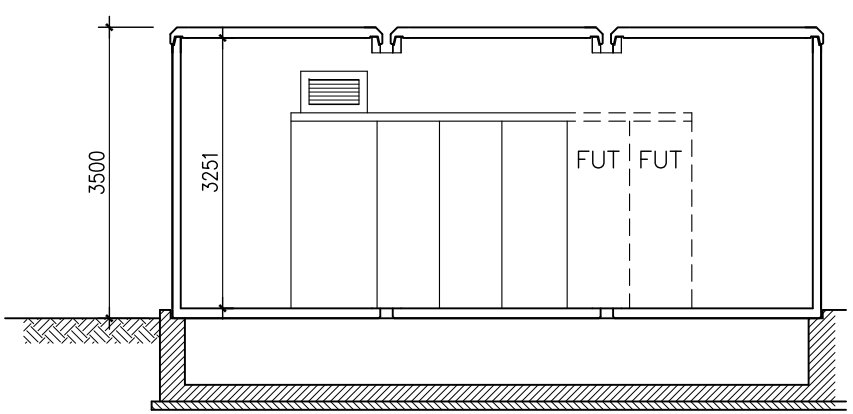
vista B



vista A



PORTE DI ADEGUATE DIMENSIONI PER PASSAGGIO QUADRI ELETTRICI MT CON MANIGLIONE ANTIPANICO



sezione A - A

sez. B-B

