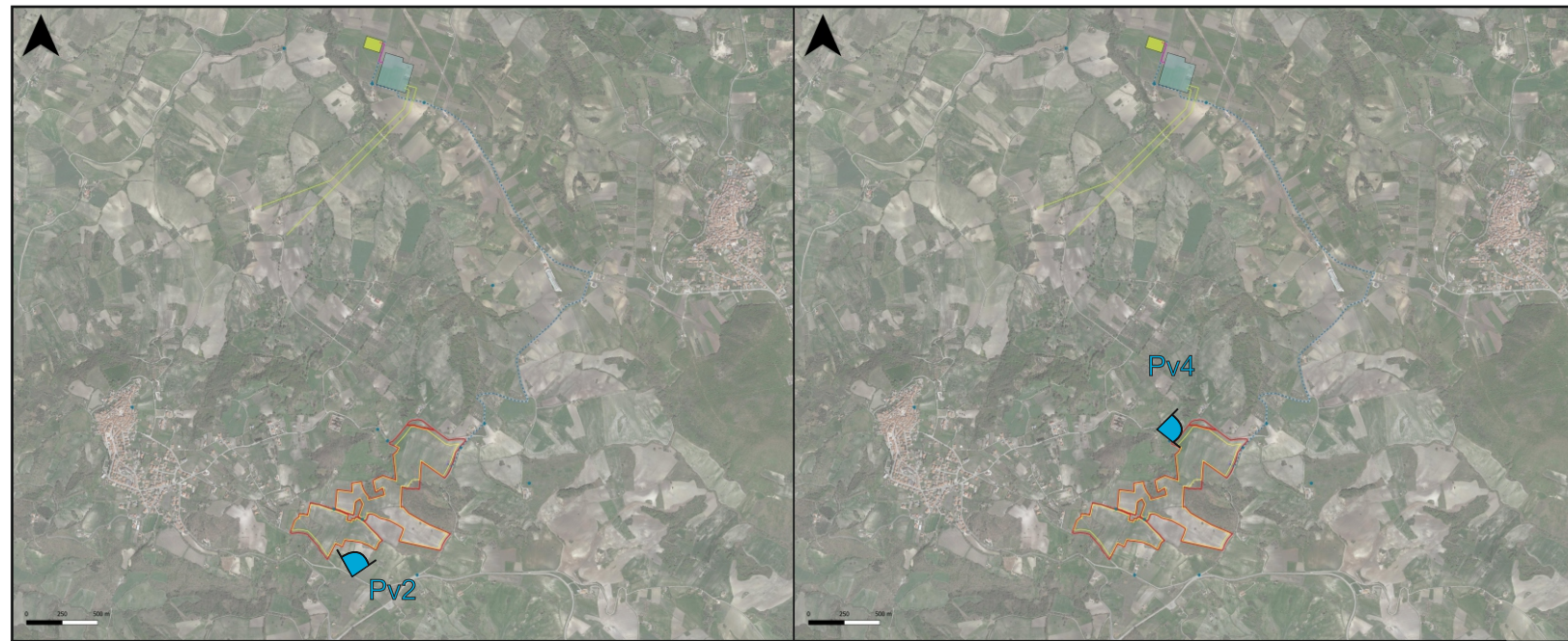


Fotoinserimento Impianto Agrivoltaico Palata 21



PV 2 - STATO DI FATTO

PV 2 - STATO DI PROGETTO
(pannelli + recinzione)




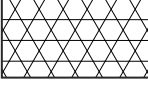






Pv 2 - STATO DI PROGETTO
CON MITIGAZIONE

PV 4 - STATO DI FATTO

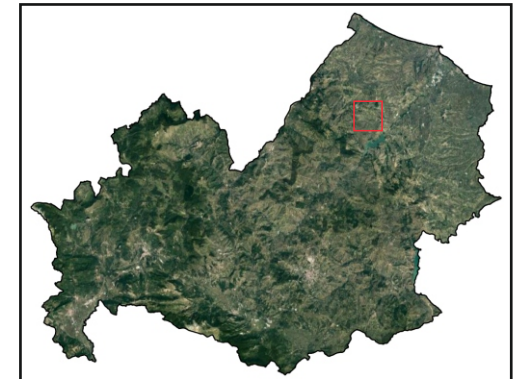
PV 4 - STATO DI PROGETTO
(pannelli + recinzione)








Pv 4 - STATO DI PROGETTO
CON MITIGAZIONE

LEGENDA

-  Limite ISTAT Regioni
-  Limite Lotto
-  Cabina di Ricezione
-  Futuro PR 150 kV Masseria Murazzo
-  Futura SE 380/150 kV Montecilfone
-  Cavo AT Punto di Raccolta Masseria Murazzo - Cabina di Ricezione
-  Cavo AT PR Masseria Murazzo - Stazione Elettrica 380/150 kV "Montecilfone"
-  Raccordi linea AT 380 kV elettrodotto esistente "Larino-Gissi"
-  Limite ISTAT Comuni
-  Recinzione impianto fotovoltaico

SR base cartografia:32633



	ARNG SOLAR III SRL Viale Giorgio Ribotta, 21 Eurosky Tower - INT. 0B3 00144 Roma (RM) P. IVA 02332900683 arngsolar3@pec.it	REGIONE MOLISE
		PROVINCIA CAMPOBASSO
		COMUNI PALATA MONTECILFONE
PROGETTO		
IMPIANTO AGRIVOLTAICO PALATA 21		
Identificatore FV21PAL_27	Titolo Fotoinserimenti	Scala Varie
		Data Novembre 2022
PROFESSIONISTI		
Dott. Geologo Giancarlo Rocco Di Bernardino g.diberardino@proes.it		Firma digitale
 		
Dotto.ssa Biologa Claudia Nuzzi c.nuzzi@proes.it		Firma digitale
 		
RESPONSABILE TECNICO PROES SRL Ing. Maurizio Elisio m.elisio@proes.it		Firma digitale
 		
PROPONENTE		Firma digitale