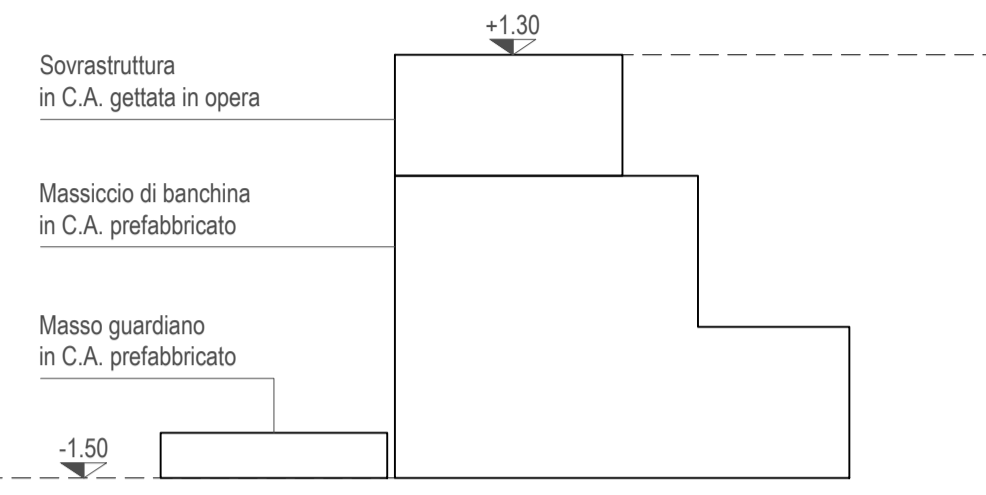
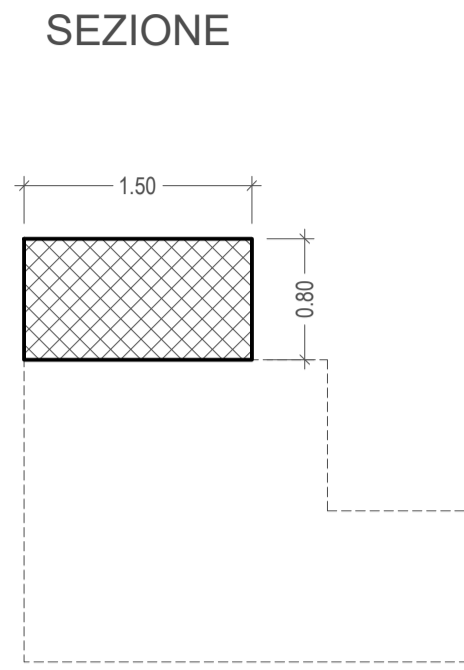


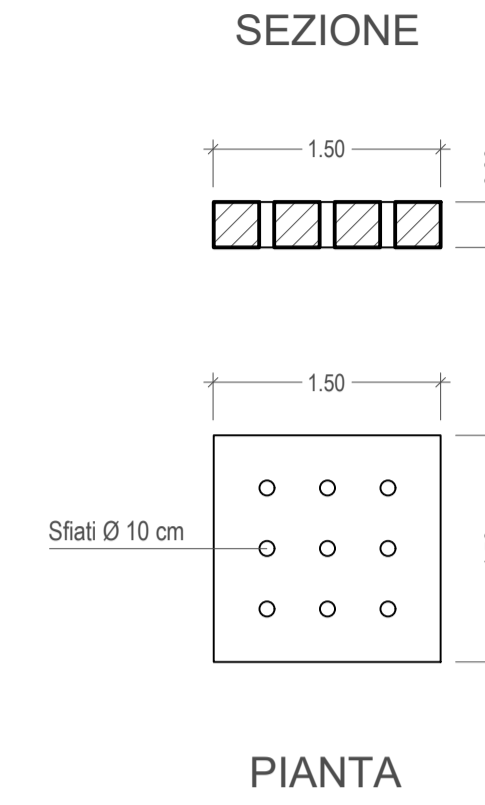
SCHEMA BANCHINA LATO PORTO STORICO  
scala 1:50



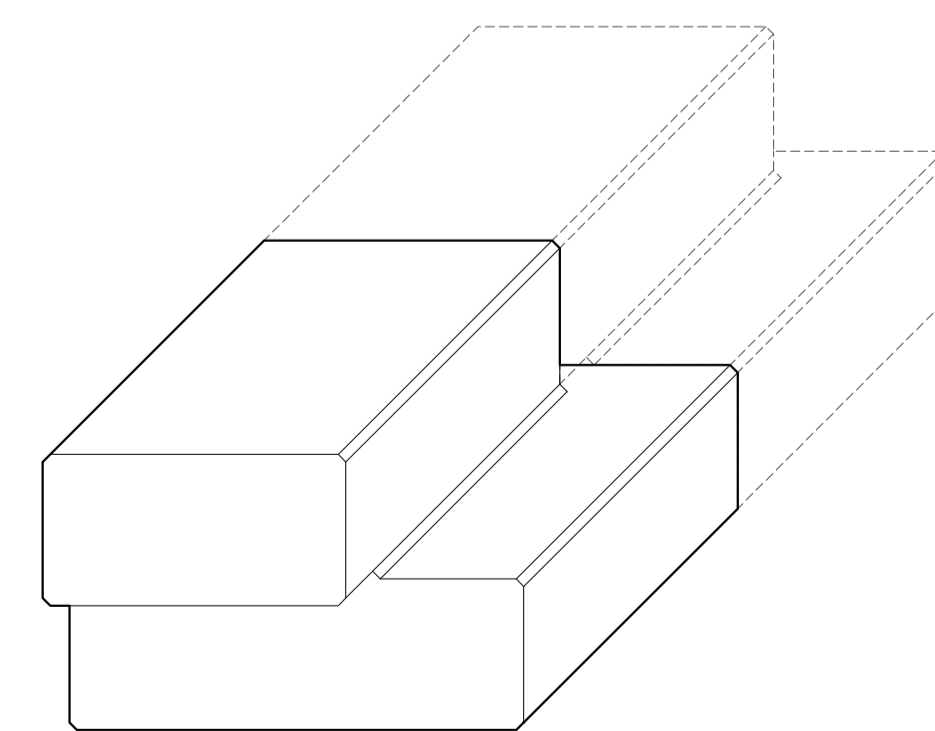
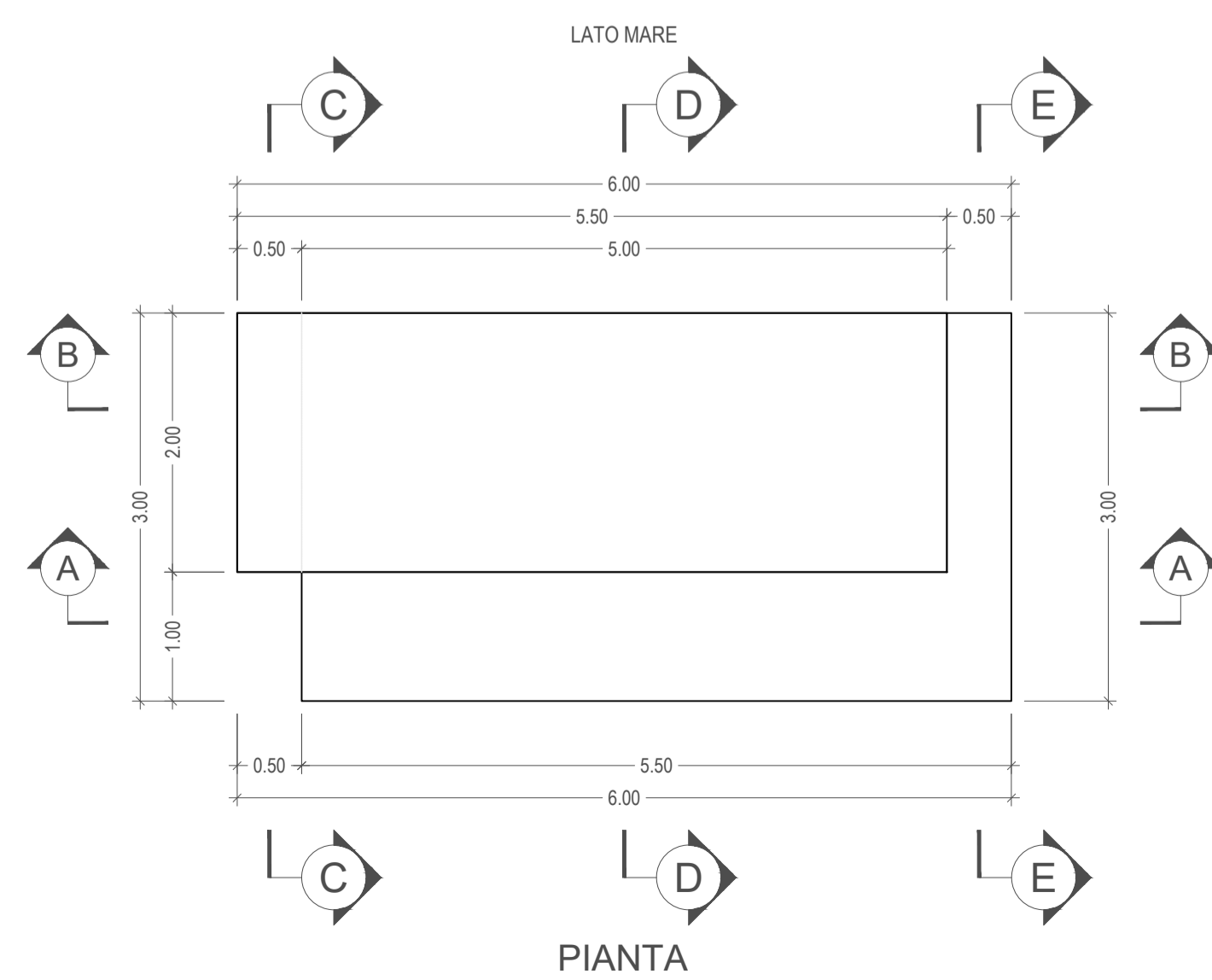
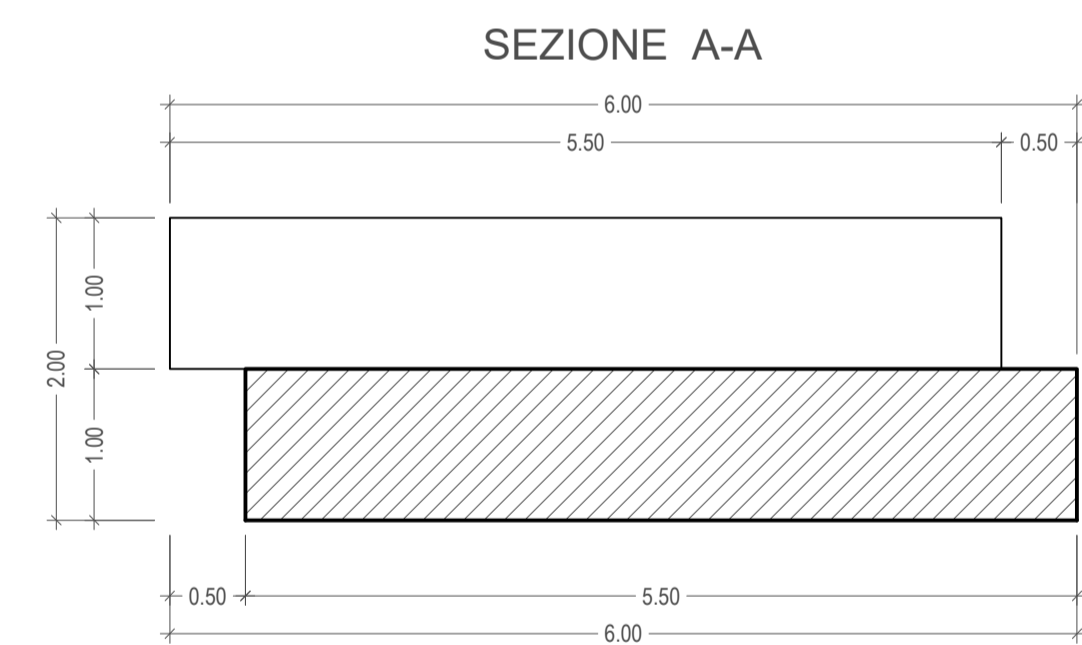
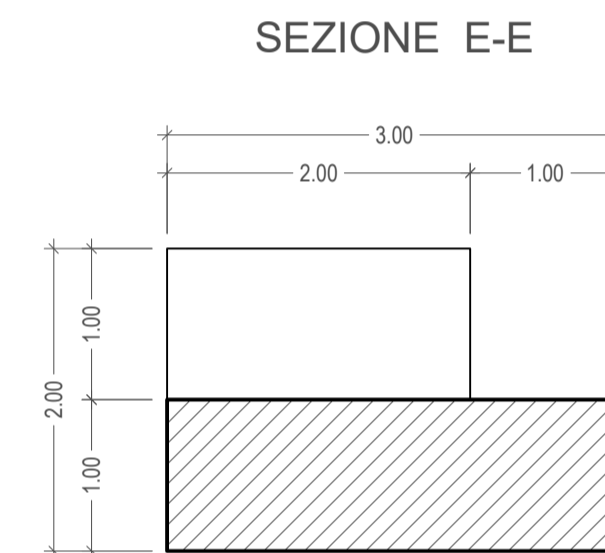
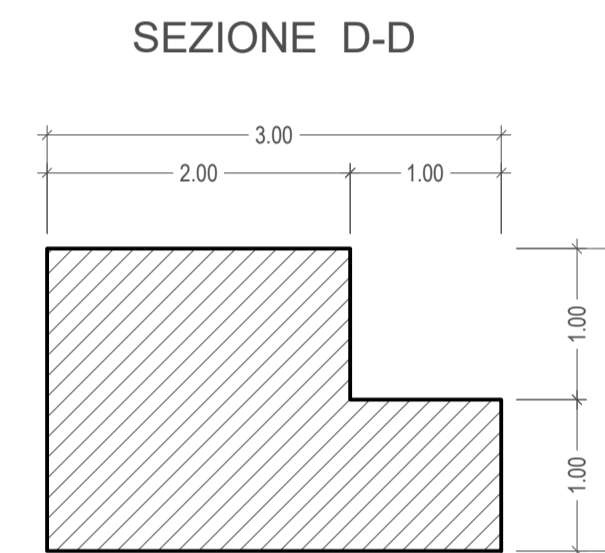
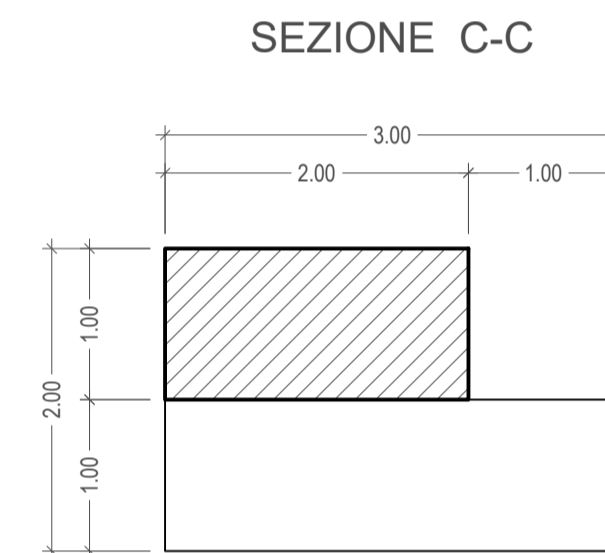
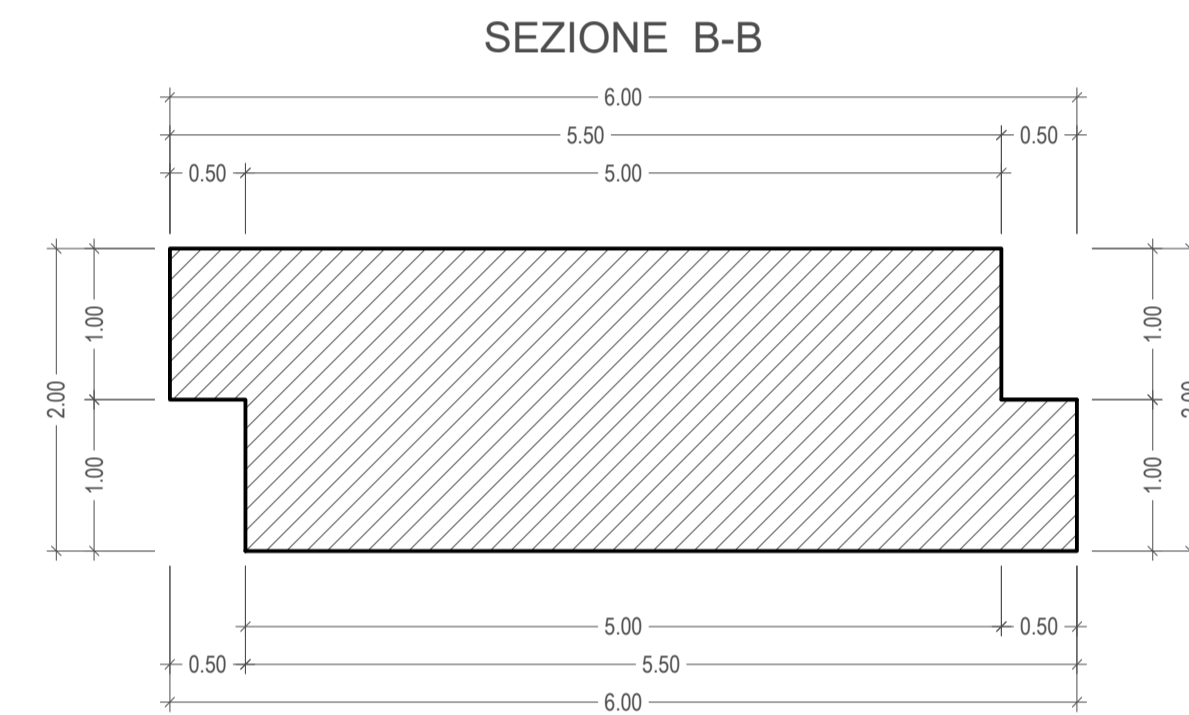
SOVRASTRUTTURA  
scala 1:50



MASSO GUARDIANO  
scala 1:50



MASSICCIO DI BANCHINA  
scala 1:50



OPERE STRATEGICHE  
PER IL PORTO DI CIVITAVECCHIA  
- 2° STRALCIO -  
NUOVO ACCESSO AL BACINO STORICO -  
COLLEGAMENTO TRA IL MOLO VESPUCCI  
E L'ANTEMURALE COLOMBO

PROGETTO DEFINITIVO

ELABORATI GRAFICI COLLEGAMENTO MOLO VESPUCCI - ANTEMURALE COLOMBO

Titolo elaborato

CARPENTERIE STRUTTURE DI BANCHINA

Scala: 1:50

PR 2 DT 110 00 CAR

Committente:  
Autorità Portuale di Civitavecchia, Fiumicino e Gaeta  
IL PRESIDENTE:  
Avv. Francesco Maria Di Majo  
IL RESPONSABILE DEL PROCEDIMENTO  
Dott. Ing. Maurizio Marini  
IL COORDINATORE GENERALE  
Dott. Ing. Giuseppe Solinas

Progetto A.T.I.:  
MODIMAR S.r.l. ( Capogruppo )  
V.A.M.S. Ingegneria S.r.l.  
SEACON S.r.l.

Data	Rev.	DESCRIZIONE	Redatto:	Verificato:	Approvato:
12/12/2022	0	PRIMA EMISSIONE	R. ANDREI	A. NUNZIATI	N. SARACA