

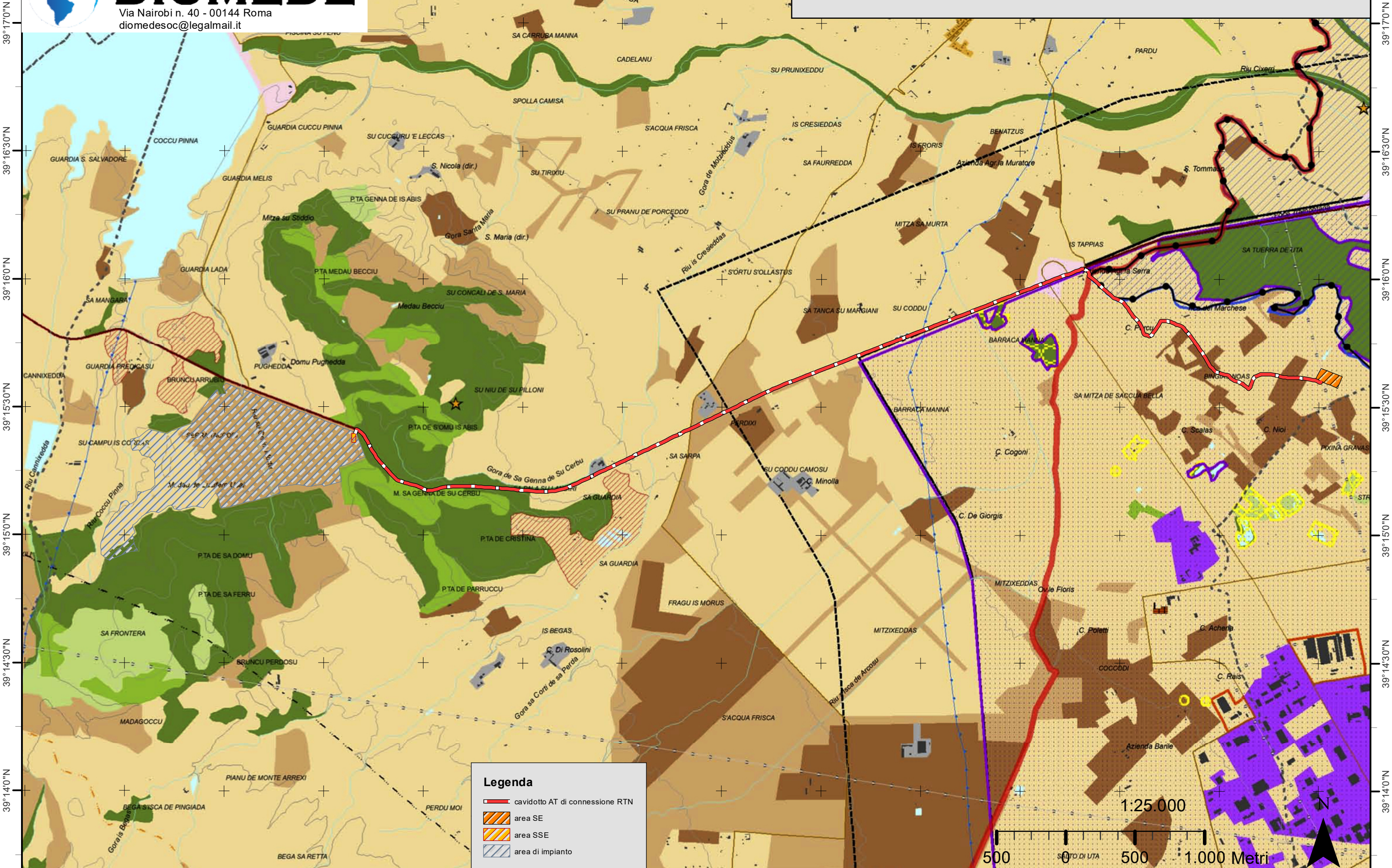
8°52'30"E 8°53'0"E 8°53'30"E 8°54'0"E 8°54'30"E 8°55'0"E 8°55'30"E 8°56'0"E 8°56'30"E 8°57'0"E 8°57'30"E 8°58'0"E 8°58'30"E 8°59'0"E



DIOMEDE

Via Nairobi n. 40 - 00144 Roma
diomedesoc@legalmail.it

Piano Paesaggistico Regionale - Ambito 1 "Golfo di Cagliari" area impianto e opere connesse







39°17'0"N
39°16'30"N
39°16'0"N
39°15'30"N
39°15'0"N
39°14'30"N
39°14'0"N

39°17'0"N
39°16'30"N
39°16'0"N
39°15'30"N
39°15'0"N
39°14'30"N
39°14'0"N

8°52'30"E 8°53'0"E 8°53'30"E 8°54'0"E 8°54'30"E 8°55'0"E 8°55'30"E 8°56'0"E 8°56'30"E 8°57'0"E 8°57'30"E 8°58'0"E 8°58'30"E 8°59'0"E

Legenda

-  cavidotto AT di connessione RTN
-  area SE
-  area SSE
-  area di impianto

1:25.000

500 0 500 1.000 Metri

