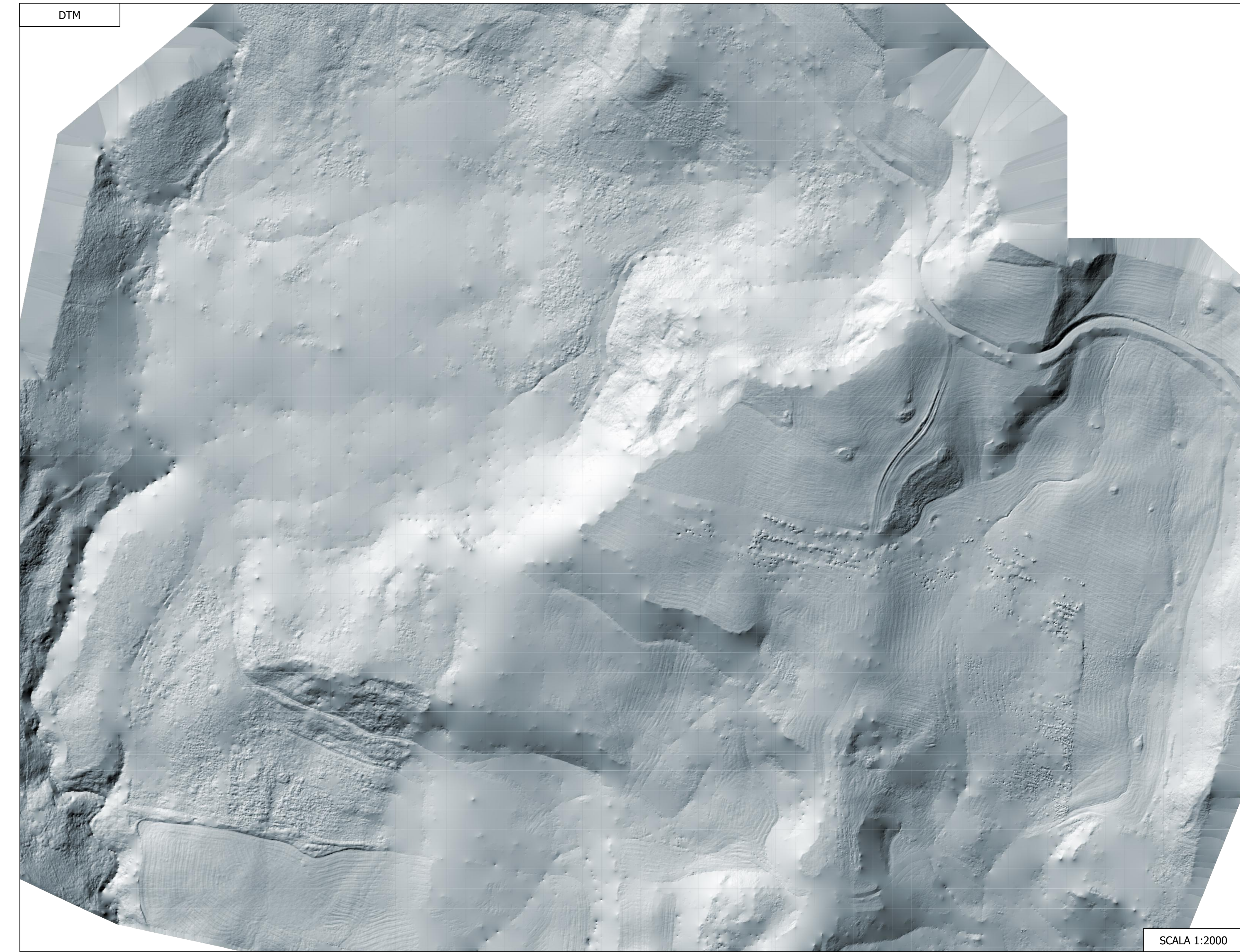
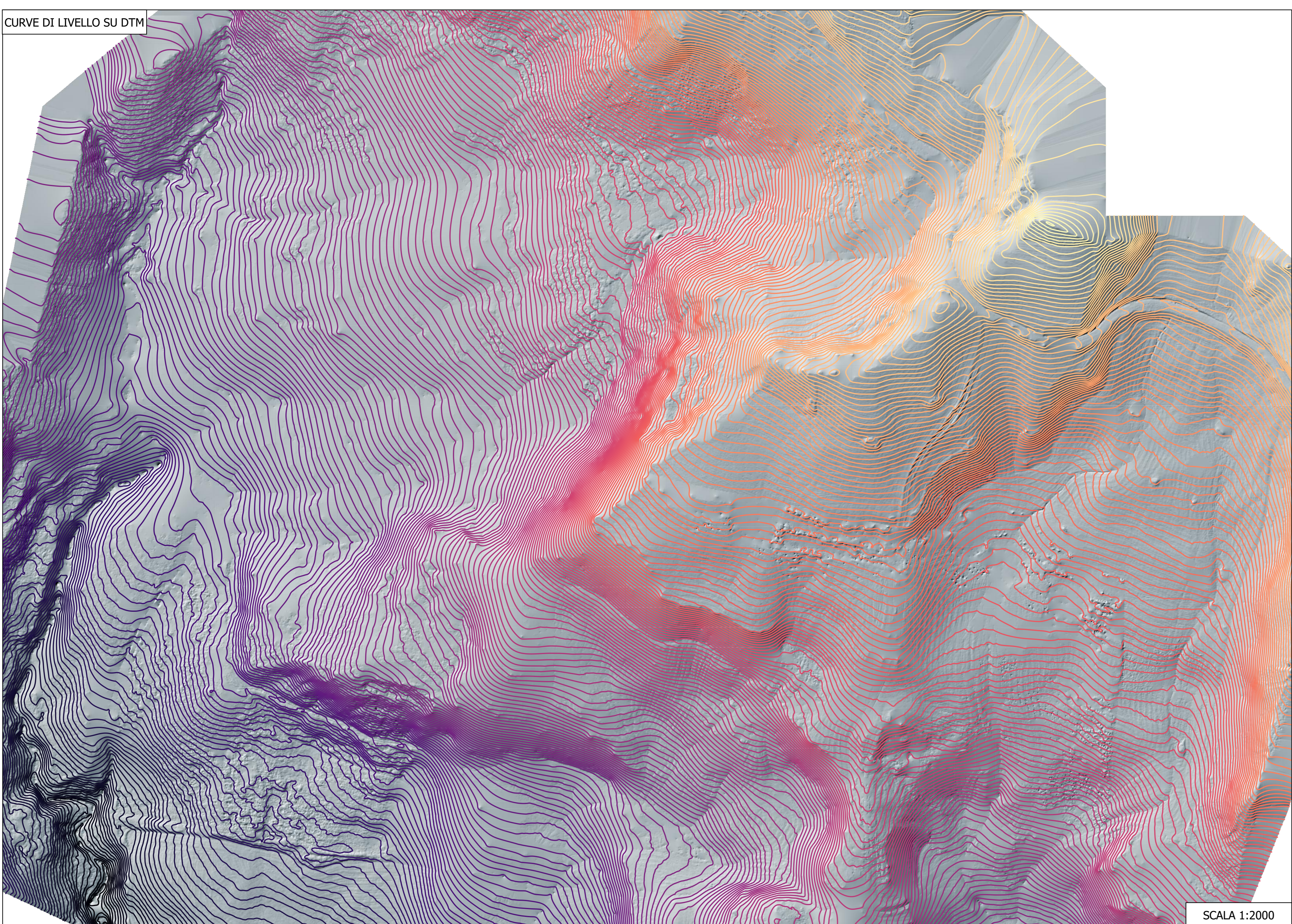


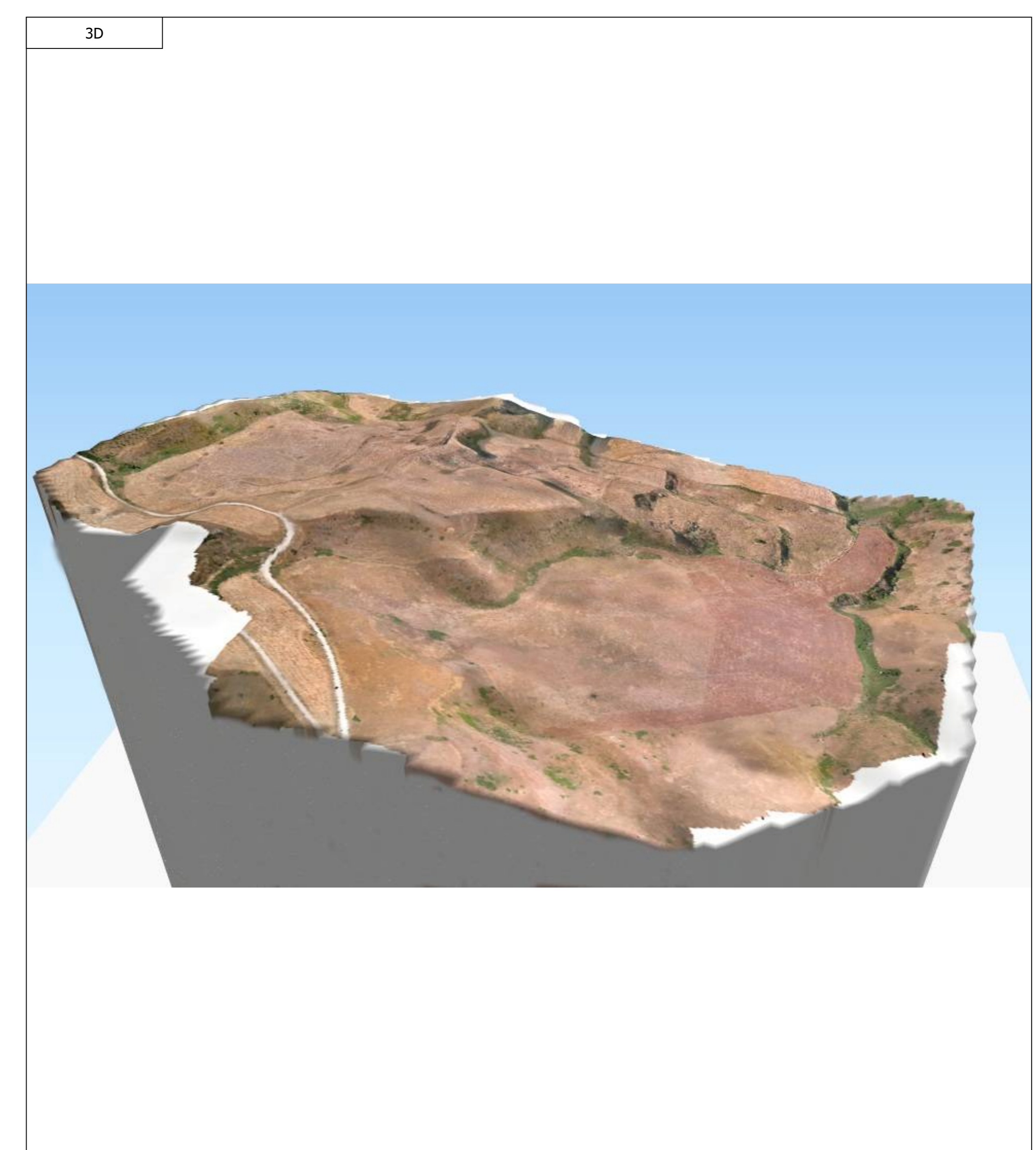
SCALA 1:2000






SCALA 1:2000



SCALA 1:2000




3D






OGGETTO:
 PROGETTO DEFINITIVO PER LA REALIZZAZIONE DI UN IMPIANTO AGRI-VOLTAICO DI POTENZA NOMINALE 31.047,8 kWp E RELATIVE OPERE DI CONNESSIONE ALLA RTN IN LOC. TUDIA, COMUNE DI CASTELLANA SICULA (PA)

ELABORATO:
 RILIEVO PLANOALTIMETRICO




PROPRONTE:



SPK Sole S.r.l.
 VIALE ABRUZZI 94
 20131 - MILANO (MI)
 P.IVA - 1337840968
 REA - MI - 2654565

PROGETTAZIONE:



Ing. Carlo Buffon
 Tel. n. 072
 Ordine degli Ingegneri
 C.F. 01670540702

EGM PROJECT S.R.L.
 VIA VERRASTRO 15/A
 85100 - POTENZA (PZ)
 P. IVA 020941076
 REA PZ 206983

Livello prog.	Cat. opera	N° . prog.elaborato	Tipo elaborato	N° foglio	Tot. fogli	Nome file	Scala
PD	I.FF	52	D			RS00EDP0091A0	1: 2000

REV.	DATA	DESCRIZIONE	ESEGUITO	VERIFICATO	APPROVATO
00	NOVEMBRE 2022	Emissione			