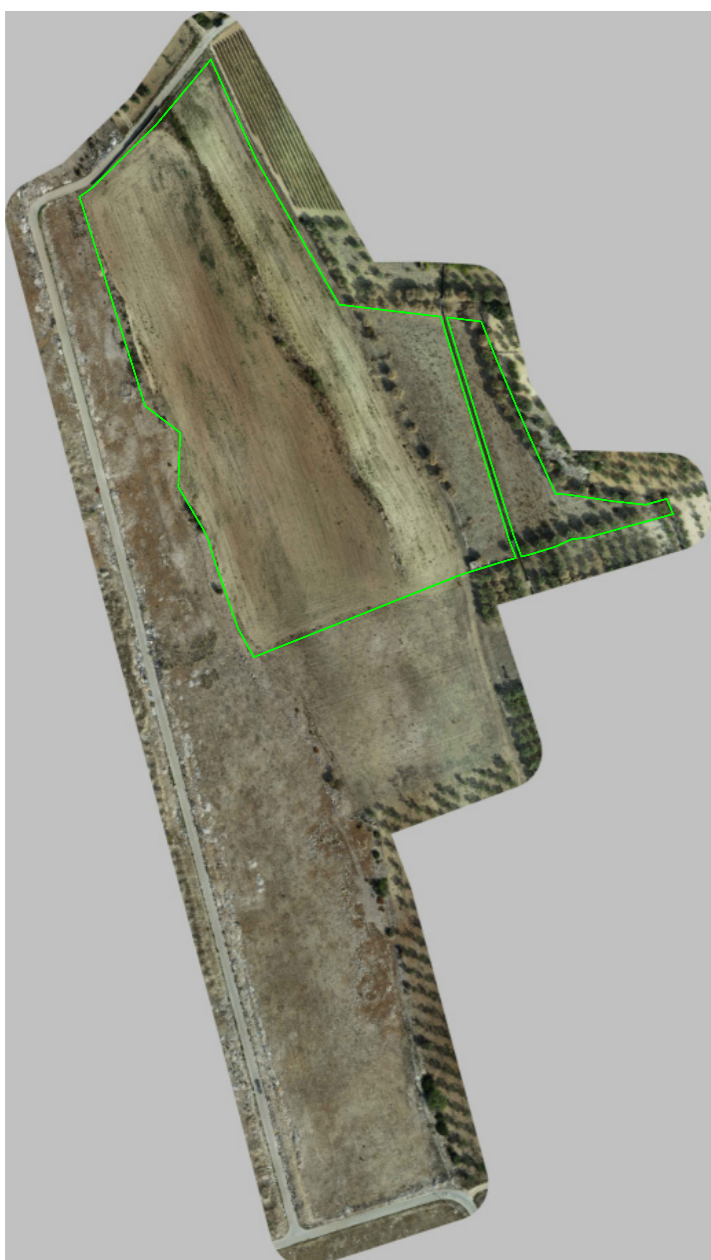
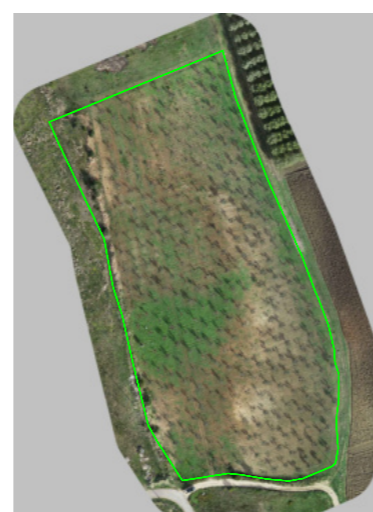


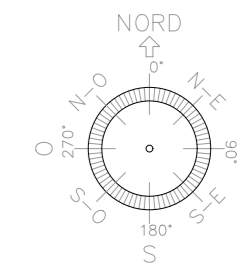
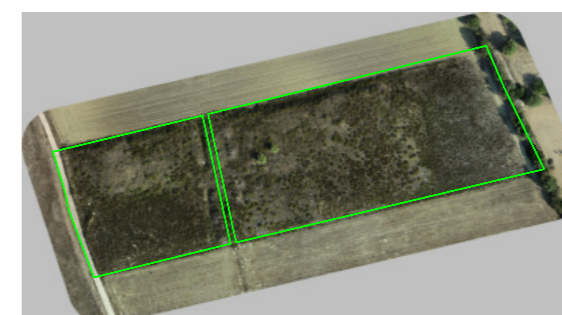
CAMPO NORD 1A



CAMPO NORD 1B



CAMPO NORD 1C

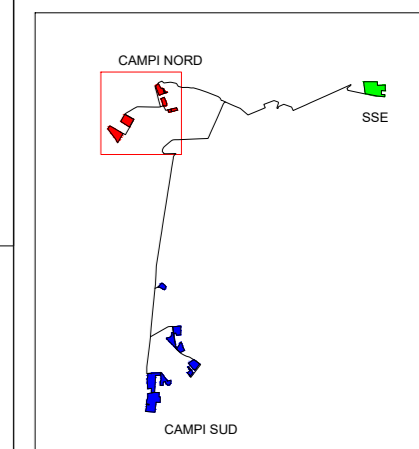


COORDINATE:

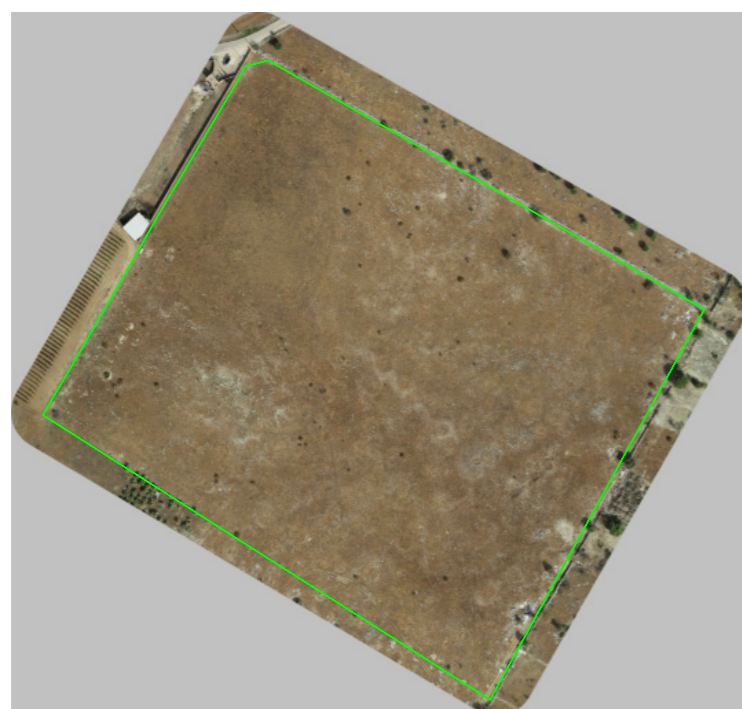
CAMPI NORD:	COORDINATE
1A	40°28'30.28"N 17°22'3.00"E
1B	40°28'20.28"N 17°22'05.74"E
1C	40°28'12.89"N 17°22'15.19"E
2A	40°28'5.04"N 17°21'24.08"E
2B	40°27'53.70"N 17°21'11.08"E

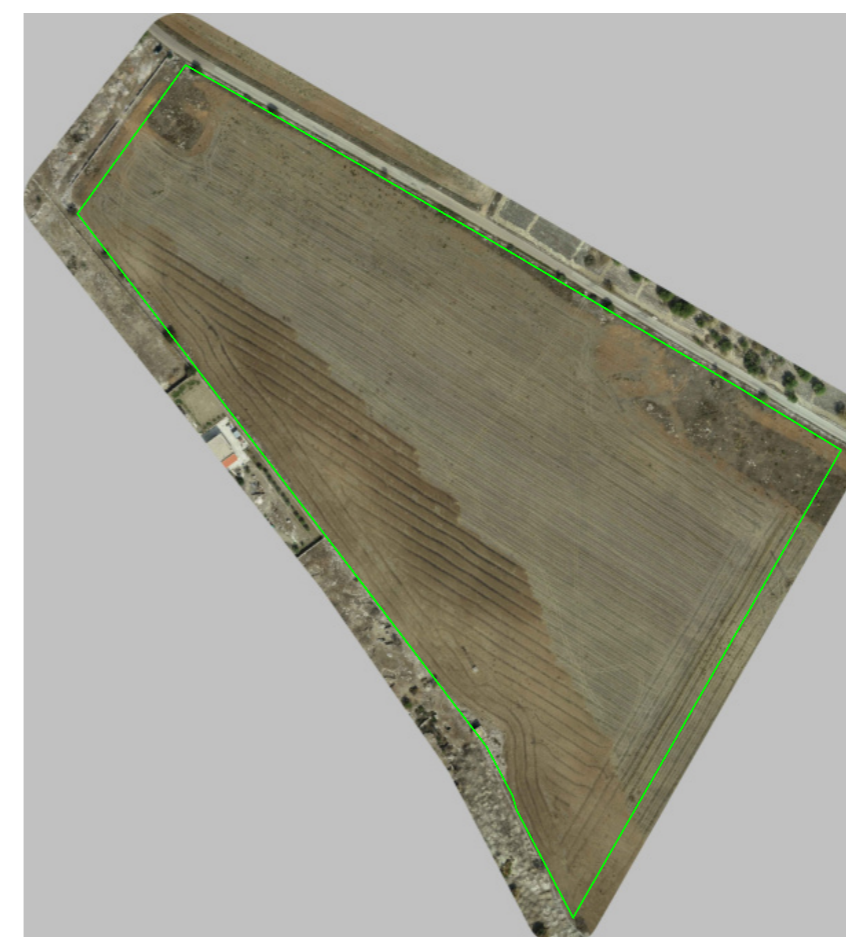
CAMPI SUD:	COORDINATE
1	40°25'44.54"N 17°21'57.42"E
2A	40°24'58.11"N 17°22'8.45"E
2B	40°24'48.23"N 17°22'16.67"E
3A	40°24'33.78"N 17°22'32.22"E
3B	40°24'27.17"N 17°22'26.71"E
4A	40°24'21.50"N 17°21'43.65"E
4B	40°24'22.29"N 17°21'56.35"E
4C	40°24'4.49"N 17°21'43.70"E



CAMPO NORD 2A



CAMPO NORD 2B



REV.	DATA:	DESCRIZIONE:

REVISIONI:	REDDATTO:	VERIFICATO:	APPROVATO:	CLIENTE:

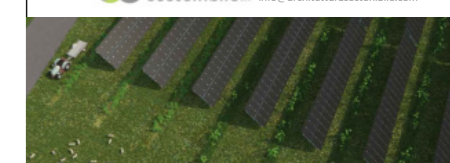
CLIENTE:

**X-ELIO**

X-ELIO TARAS S.R.L.  
 Corso Vittorio Emanuele II n. 349 - 00186 ROMA  
 Tel. +39 06.8412640 - Fax +39 06.8551726  
 Partita IVA n° 16234011001

PROGETTISTA:

architettura sostenibile  
 Viale Torino, 95 - 00141 - Roma  
 info@architetturasostenibile.com



PROGETTO:

**PROGETTO AGROVOLTAICO "TARANTO"**  
 Realizzazione di un impianto Agrovoltaiico di potenza pari a 61,75 MWp e relative opere di connessione alla RTN

LOCALITA': REGIONE PUGLIA, COMUNI DI TARANTO, FAGGIANO (TA), SAN GIORGIO IONICO (TA) E CAROSINO (TA)

TITOLO: **RILIEVO PLANOALTIMETRICO CAMPI NORD**

PRATICA N:	FORMATO:	N°DISEGNO:	FOGLIO:	REV:
	A2	AS_TAR_V.18a		

DATA:	SCALA:
11\2022	1:4.000