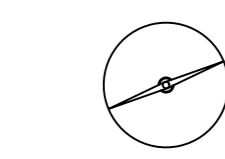
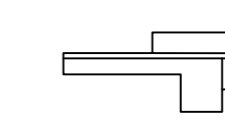



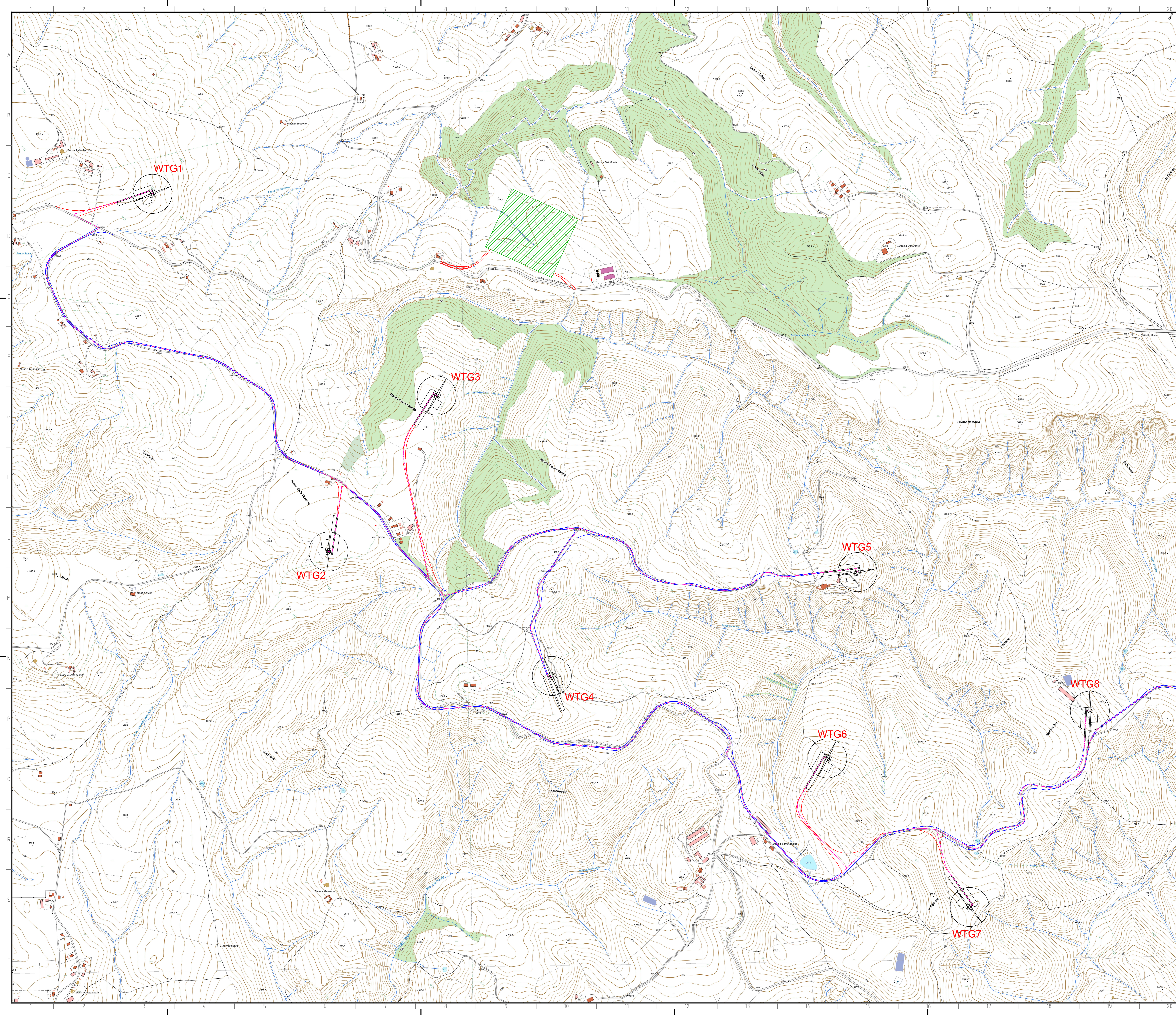


-  Aerogeneratore  
(Diametro rotore = 162 m; Hhub = 125 m)
-  Piazza
-  Area di trasbordo
-  Strade di nuova realizzazione
-  Strada esistente da adeguare
-  Cavodotto a 36 kV



**green & green**  
WE ENGINEERING

Green & Green S.r.l.  
Via Edmondo de Amicis n.64  
37036 Ronde (CS) - Italy  
P.IVA 02900010782  
Ph. (+39) 0984 846295  
Fax (+39) 0984 1214570  
info@greengreen.it  
www.greengreen.it

Il tecnico  
Ing. Leonardo Sblendido



00	23/12/2022	EMISSIONE PER ITER AUTORIZZATIVO	D. Scivo	L. Sblendido
REV	DATA	DESCRIZIONE	PREPARATO	CONTROLLATO

"IMPIANTO EOLICO DI 64 MW IN LOCALITA' PIANA DELLA TAVERNA"  
COMUNI DI STIGLIANO E CRACO (MT)



PROGETTO:	DEFINITIVO		
NOTE FILE:	C:\ZF\STRO01\W005_01_inquadramento generale su base CTR_parte1.pdf		
FORMATO:	SCALA:	SCALA PLOT:	FOGLIO:
A0	1:5000	1:1	1 di 4
TITOLO:	INQUADRAMENTO GENERALE SU BASE CTR_parte 1		



CODICE ELABORATO			
IMPVTO	TRC	PROG	REVISIONE
C22F	ST	R001	WD00500