



INTERNAL CODE

C22FSTR001WR051\_00

TITLE: Valutazione preliminare di impatto archeologico

AVAILABLE LANGUAGE: IT

**“IMPIANTO EOLICO DI 54 MW IN LOCALITA’ PIANA DELLA TAVERNA”  
COMUNI DI STIGLIANO E CRACO (MT)**

**VALUTAZIONE PRELIMINARE DI IMPATTO ARCHEOLOGICO**

**ALLEGATO 2: VISIBILITA’ AL SUOLO**

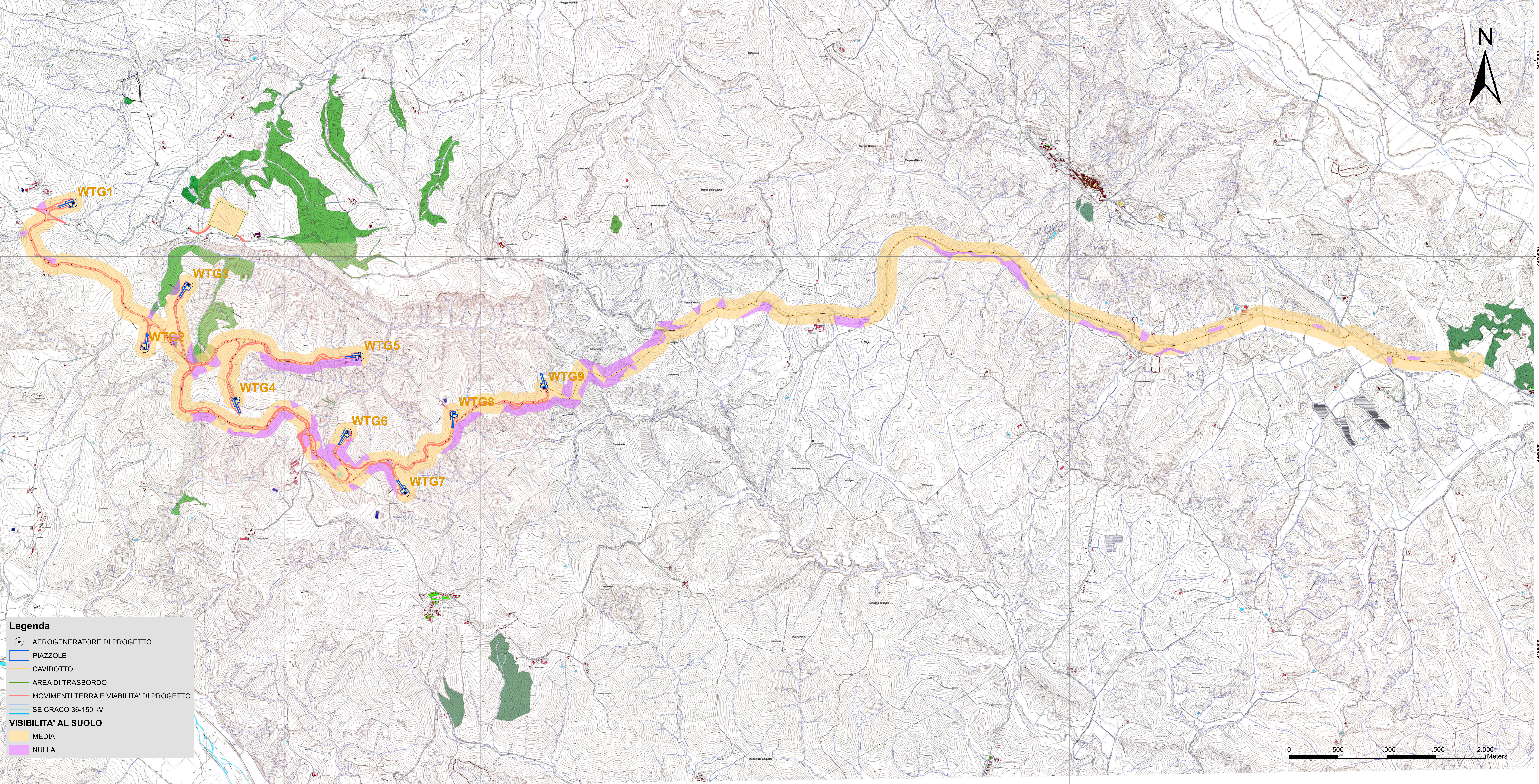
File:C22FSTR001WR051\_00\_Valutazione preliminare di impatto archeologico

<b>00</b>	<b>23/12/2022</b>	<b>EMISSIONE PER ITER AUTORIZZATIVO</b>	<b>S. Paradiso</b>		<b>L. Sblendido</b>
<i>REV.</i>	<i>DATE</i>	<i>DESCRIPTION</i>	<i>PREPARED</i>	<i>VERIFIED</i>	<i>APPROVED</i>
<b>VALIDATION</b>					
<i>NOME</i>		<i>NOME</i>		<i>NOME</i>	
COLLABORATORS		VERIFIED BY		VALIDATED BY	
<i>PROJECT / PLANT</i> STGLIANO EO		<b>INTERNAL CODE</b>			
		<b>C22FSTR001WR051_00</b>			
<i>CLASSIFICATION:</i> COMPANY		<i>UTILIZATION SCOPE</i>			


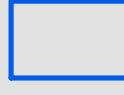

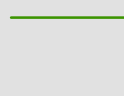
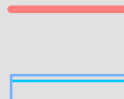


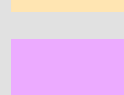
612000 614000 616000 618000 620000 622000 624000 626000



4472000  
4470000  
4468000  
4466000



**Legenda**

-  AEROGENERATORE DI PROGETTO
-  PIAZZOLE
-  CAVIDOTTO
-  AREA DI TRASBORDO
-  MOVIMENTI TERRA E VIABILITA' DI PROGETTO
-  SE CRACO 36-150 kV
- VISIBILITA' AL SUOLO**
-  MEDIA
-  NULLA

