

Regione Puglia

COMUNE DI SALICE SALENTINO(LE)-GUAGNANO(LE)-CAMPI SALENTINA(LE)
SAN PANCRAZIO SALENTINO(BR)-CELLINO SAN MARCO(BR)
MESAGNE(BR)-BRINDISI (BR)
SAN DONACI (BR)




PROGETTO PER LA REALIZZAZIONE DI IMPIANTO PER LA
PRODUZIONE DI ENERGIA ELETTRICA DA FONTI RINNOVABILI,
NONCHE' OPERE CONNESSE ED INFRASTRUTTURE, DI POTENZA
PREVISTA IMMESSA IN RETE PARI A 105,40 MW
ALIMENTATO DA FONTE EOLICA DENOMINATO "APPIA SAN MARCO"

PROGETTO DEFINITIVO PARCO EOLICO "APPIA SAN MARCO"

Codice Impianto: G9ZFR24

Tav.:	Titolo:
R38a-7	VALUTAZIONE PREVENTIVA DEL RISCHIO ARCHEOLOGICO CARTA DEL POTENZIALE ARCHEOLOGICO

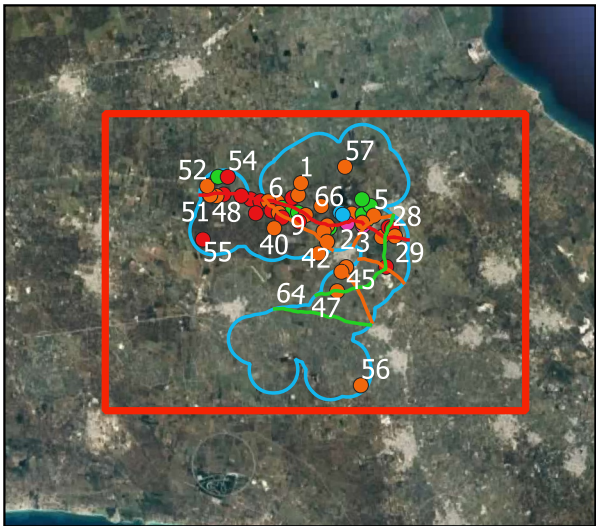
Scala:	Formato Stampa:	Codice Identificatore Elaborato
s.m.	A4	G9ZFR24_DocumentazioneSpecialistica_R38a-7

Progettazione:	Committente:
 <p>Gruppo di progettazione: Ing. Santo Masilla - Responsabile Progetto Ing. Francesco Masilla</p>  <p>Amm. Francesco Di Maso Ing. Nicola Galdiero Ing. Pasquale Esposito</p> <p>Via Aosta n.30 - cap 10152 TORINO (TO) P.Iva 12400840018 - REA TO-1287260 Amm.re Soroush Tabatabaei</p> <p>Viale Michelangelo, 71 30129 Treviso TEL 041 579 7998 mail: tecnico@inse.it</p>	<p>ENERGIA LEVANTE s.r.l. Via Luca Gaurico n.9/11 Regus Eur - 4° piano - Cap 00143 ROMA P.IVA 10240591007 - REA RM1219825 - energialevantesrl@legalmail.it www.sserenewables.com - Tel.: +39 0654831</p> <p>Società del Gruppo</p>  <p>For a better world of energy</p>
Indagini Specialistiche :	
Dott. Cristian Napolitano - Archeologo	

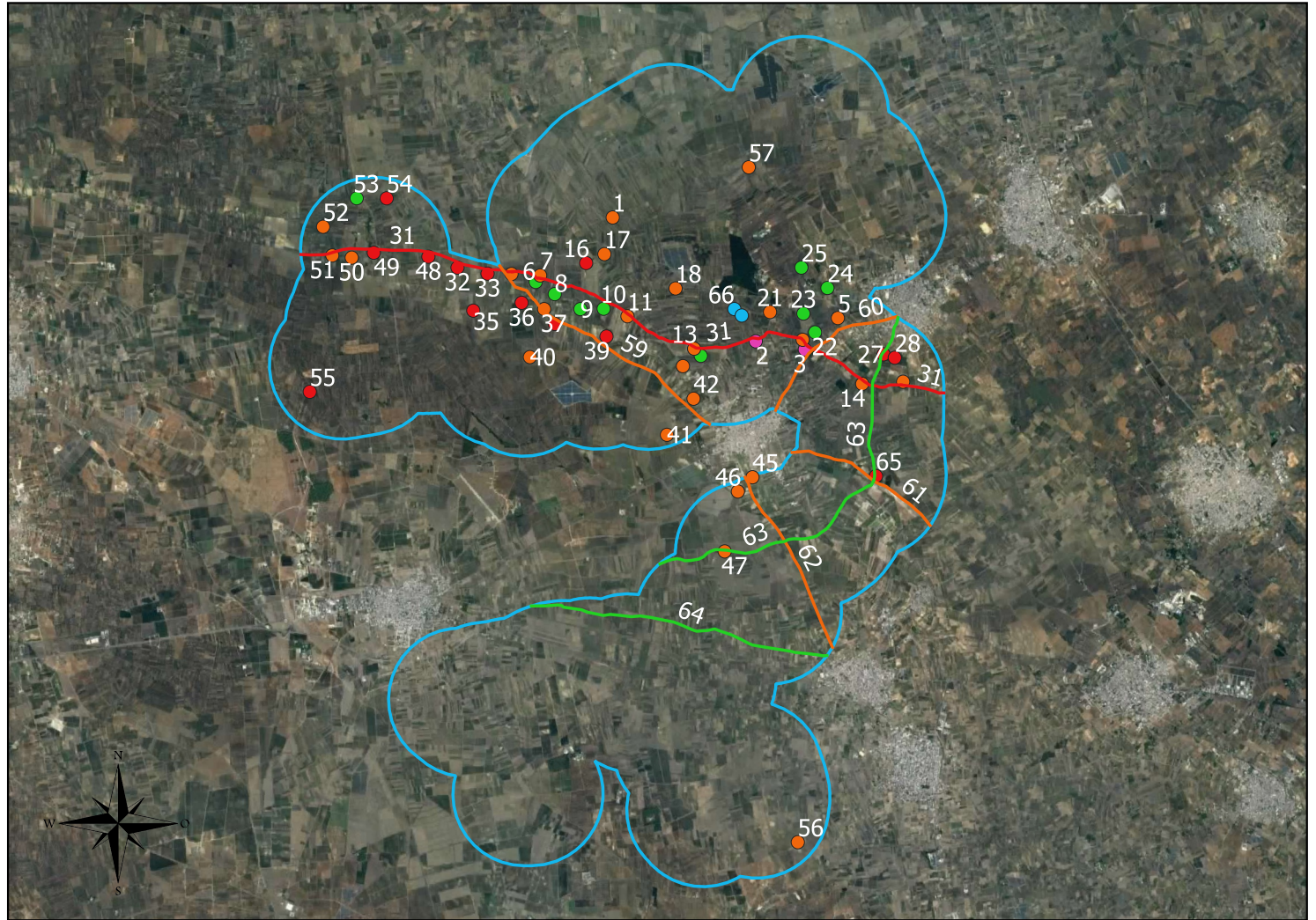
Data	Motivo della revisione:	Redatto:	Controllato:	Approvato:
Luglio 2022	Prima emissione	S.M.	S.M.	G.M.



0 5 10 km














0 3 6 km



0 1 2 km

TAVOLA 7
CARTA DEL POTENZIALE ARCHEOLOGICO

drawn by
Christian Napolitano

 AP22_BUFFER_EDIT	 AP22_SITI_LINE
 AP22_SITI_POINT	 2 - Potenziale Basso
 2 - Potenziale Basso	 3 - Potenziale Medio
 3 - Potenziale Medio	 4 - Potenziale Alto
 4 - Potenziale Alto	
	 AP22_BUFFER_EDIT