



# ZIM Track

## Horizontal single-axis tracker

- Strong and rigid construction, fully recyclable system components.
- Fast assembly, only bolted connections with standard tools, no welding, cutting or drilling required.
- Innovative module bracket with hooks for fast module installation.
- Single axis, one module portrait (1P) tracker system.
- Integrated cable management concept.
- Low maintenance system. Easy replacement of individual components.
- Proprietary DC-powered Track.Bloxx eliminates need of battery.
- Bifacial optimized design.

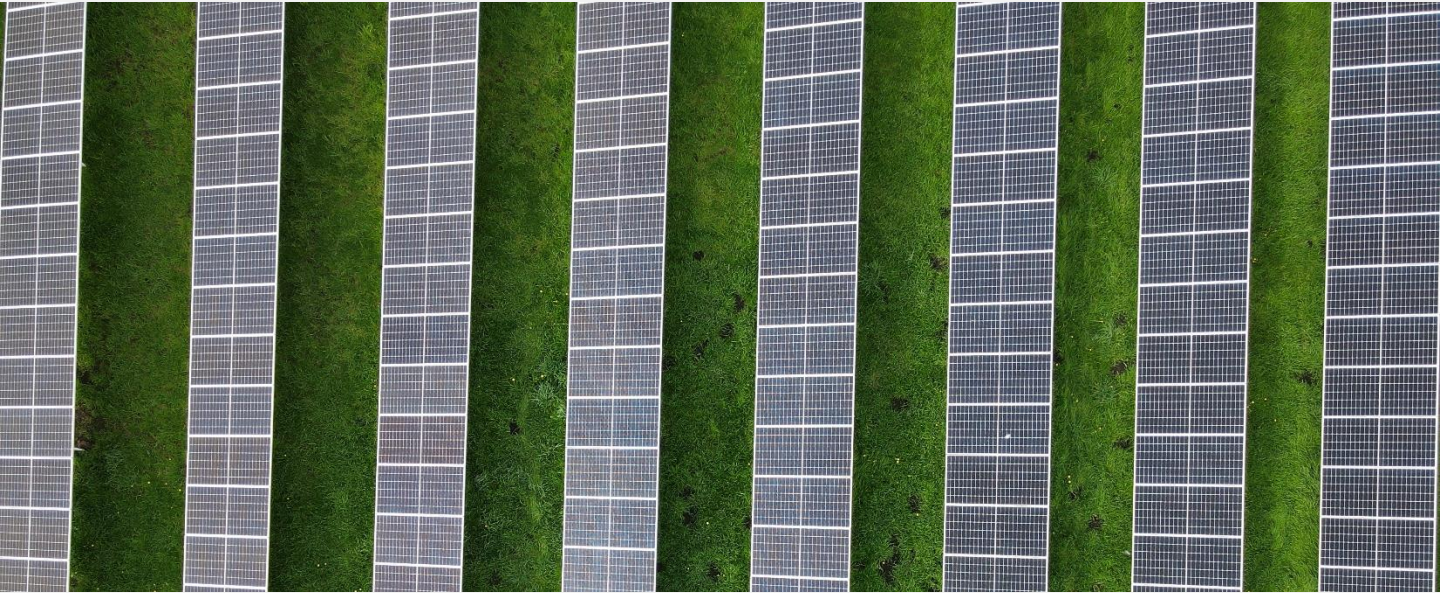
### ZIM Track– Technical Data

|  |  |
|--|--|
| <b>Design life</b>                                   | ▪ 25+ years  |
| <b>Max. inclination Standard Tracker North-South</b> | ▪ 8 % / 4.5°   |
| <b>Max. inclination Tracker North-South</b>          | ▪ 15 % / 8.5°  |
| <b>Length of tracker</b>                             | ▪ < 96 m   |
| <b>Turning angle</b>                                 | ▪ +/- 60°  |
| <b>Operating temperature</b>                         | ▪ -20° up to +55° C  |
| <b>Average ground clearance inclined module</b>      | ▪ Client specific  |
| <b>Module type</b>                                   | ▪ M6-M12   |
| <b>Power</b>   | <ul style="list-style-type: none"> <li>▪ AC power (230V)</li> <li>▪ DC power (1500V)</li> <li>▪ Optional battery Add-On</li> </ul> |



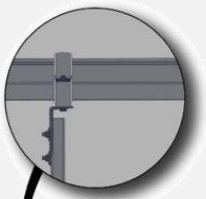
## ZIM Track– Technical Data

|                                 |   |
|---------------------------------|---|
| <b>Warranty statement</b>       | <ul style="list-style-type: none"> <li>▪ Tracker steel structure 10 years, control system 5 years. (Extension on request)</li> </ul>  |
| <b>Tracking algorithm</b>       | <ul style="list-style-type: none"> <li>▪ Astronomical tracking algorithm with 3D-backtracking.</li> </ul>   |
| <b>Communication</b>            | <ul style="list-style-type: none"> <li>▪ Proprietary wireless 2.4 GHz mesh network between central control and Track.Bloxx</li> </ul>   |
| <b>Integration of Inverters</b> | <ul style="list-style-type: none"> <li>▪ Weather protected inverter mounting possible, shelter from rain and overheating.</li> </ul>  |
| <b>Drive system</b>             | <ul style="list-style-type: none"> <li>▪ Slewing drive, one unit per tracker row.</li> </ul>  |
| <b>Cabling</b>                  | <ul style="list-style-type: none"> <li>▪ Integrated cable management.</li> </ul>  |
| <b>IP class</b>                 | <ul style="list-style-type: none"> <li>▪ IP65</li> </ul>  |
| <b>Weather protection</b>       | <ul style="list-style-type: none"> <li>▪ Storm, snow and hail protection integrated in optimised algorithm. Threshold settings project specific configurable.</li> </ul>  |
| <b>Cleaning position</b>        | <ul style="list-style-type: none"> <li>▪ Individual configurable.</li> </ul>  |
| <b>Tests / Certification</b>    | <ul style="list-style-type: none"> <li>▪ ISO 9001, ISO 14001</li> <li>▪ IEC 62817 (Design qualifications of solar trackers)</li> <li>▪ Risk Assessment for health and safety according machinery directive</li> <li>▪ Wind tunnel test including full elastic model and galloping tests.</li> <li>▪ Dynamic analysis for structural calculation of substructure.</li> </ul> |
| <b>Monitoring</b>               | <ul style="list-style-type: none"> <li>▪ ZIM Track monitoring portal</li> <li>▪ Remote tracker control via external plant access</li> </ul>   |

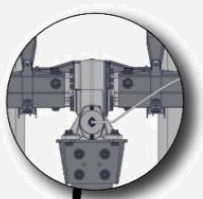


## Main mechanical Components ZIM Track

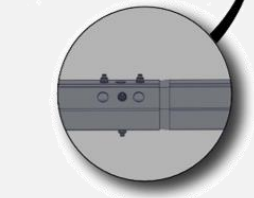
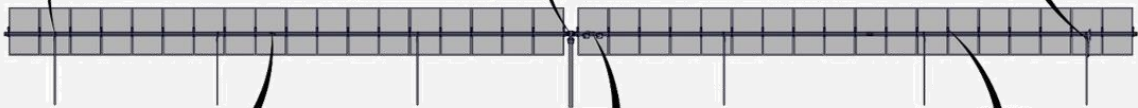
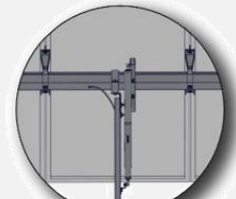
**Sigma Pile & Bearing**



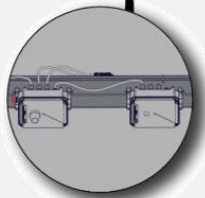
**Centre HEA Pile & Drive**



**Damper**



**Hexagonal Tubes & Connectors**



**Control System:  
Track.Bloxx**



**Module clamping**

**Contact:**

ZIMMERMANN PV-Tracker GmbH  
Marco Komander (Project Manager)  
+49 7355 79099-30  
[m.komander@pv-tracker.de](mailto:m.komander@pv-tracker.de)



Website



LinkedIn



Instagram