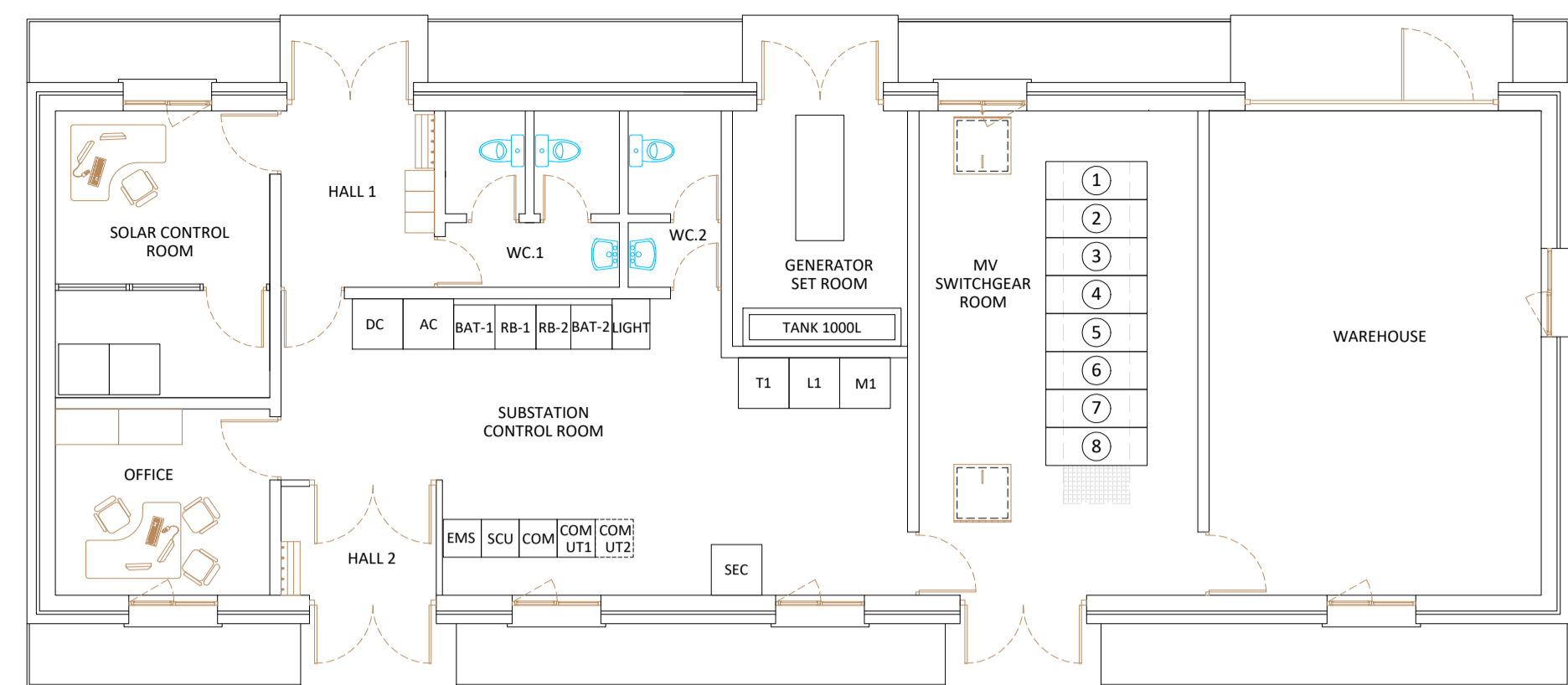
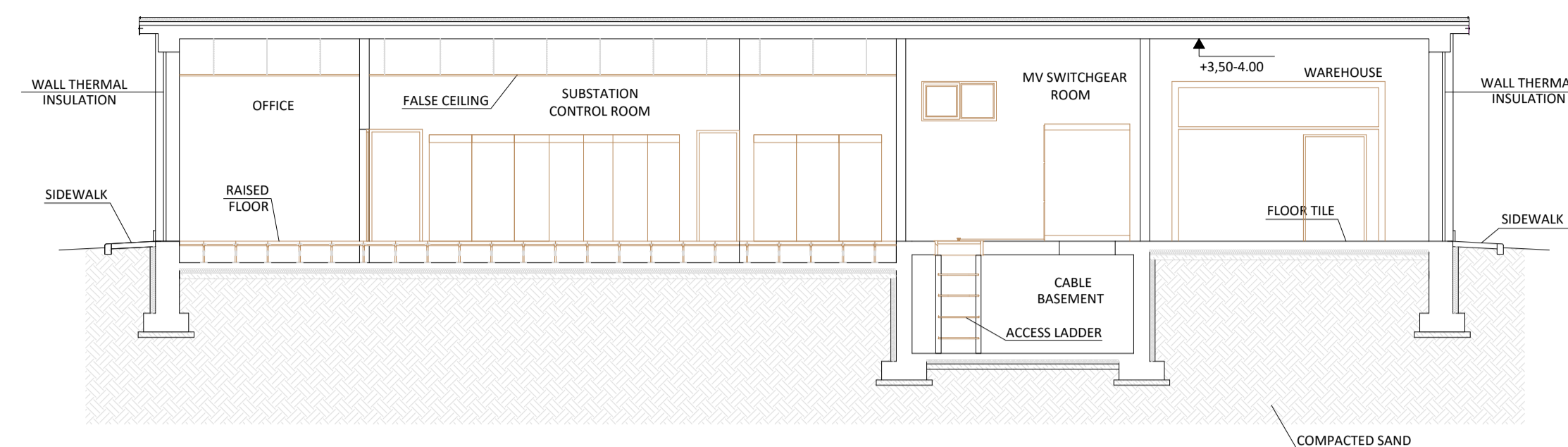


Pianta edificio tecnologico - Scala 1:100

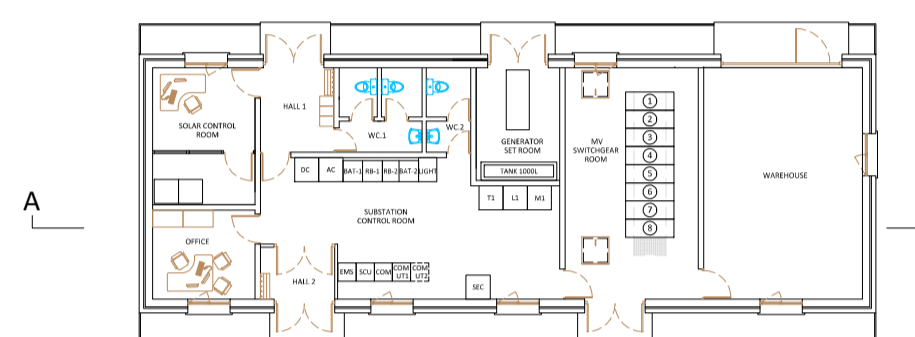
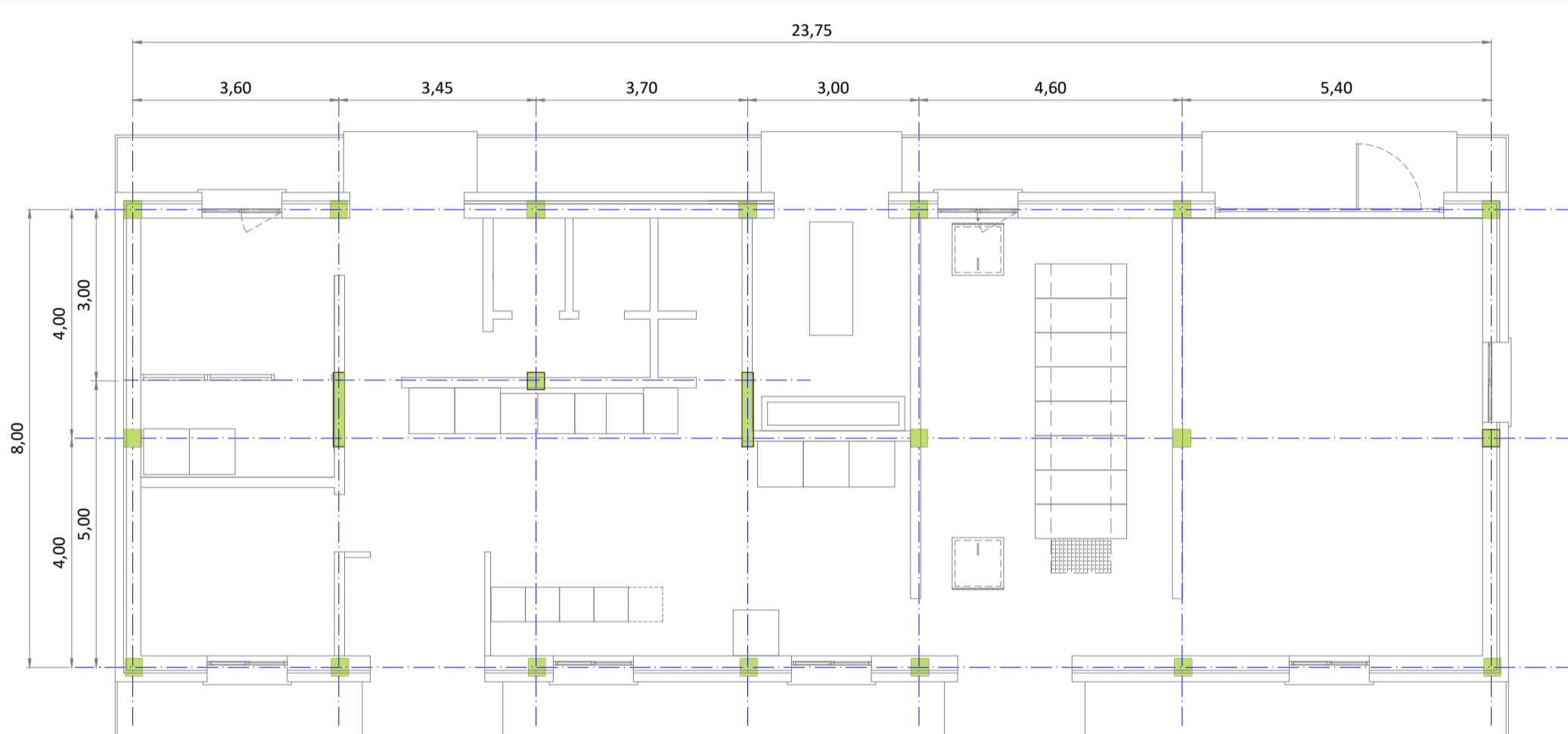


Sezione longitudinale - Scala 1:100

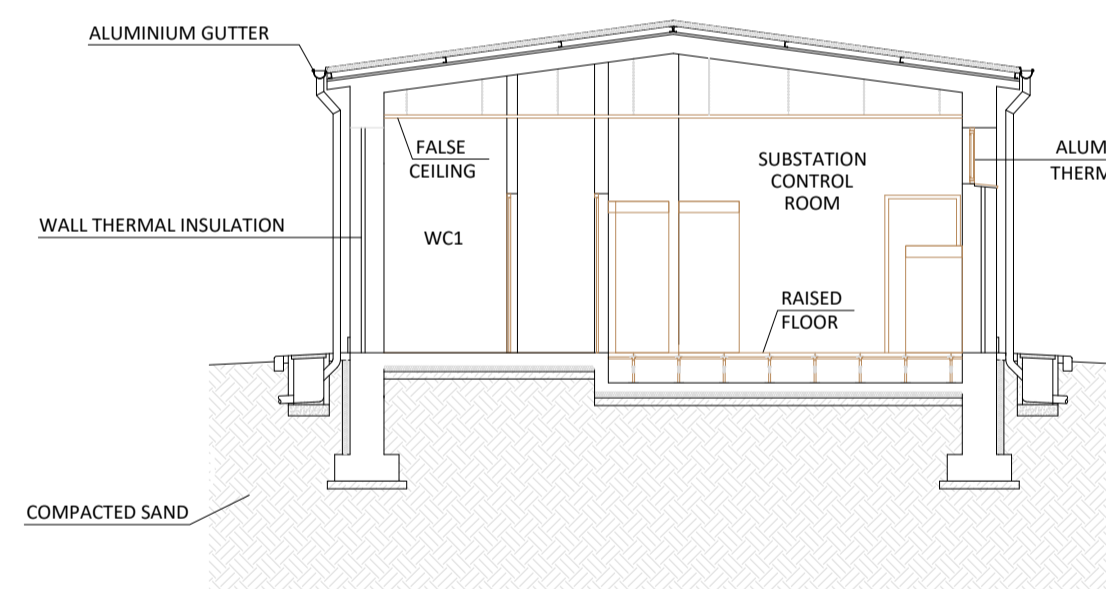


CROSS SECTION A-A

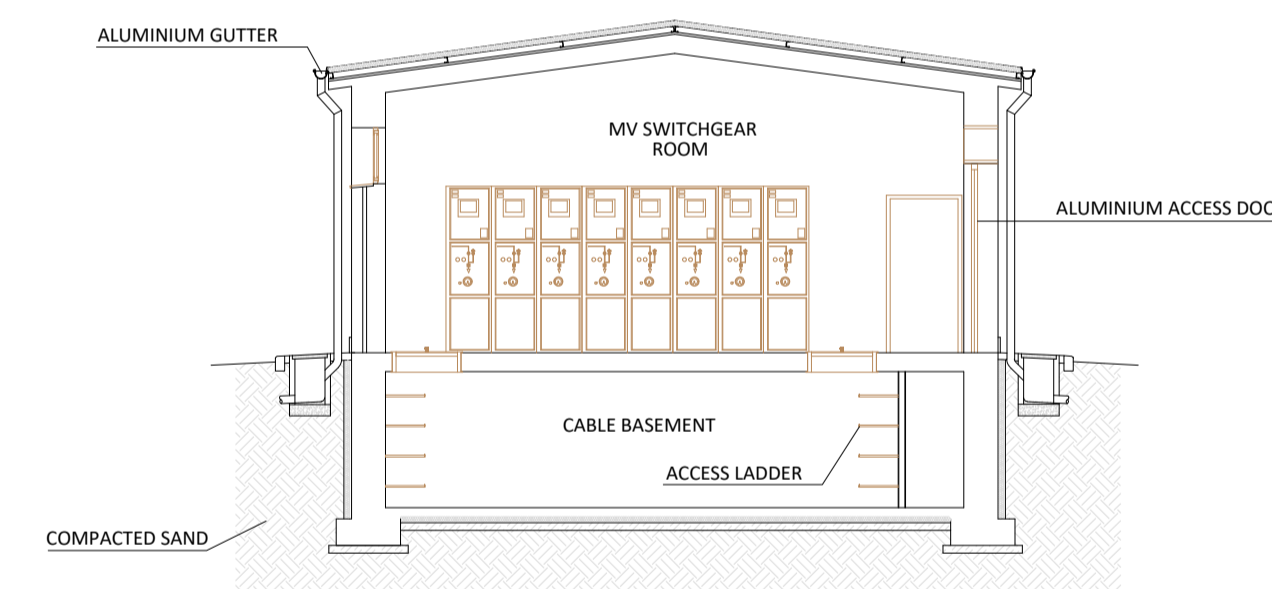
Pianta strutture verticali - Scala 1:100



Sezioni trasversali - Scala 1:100

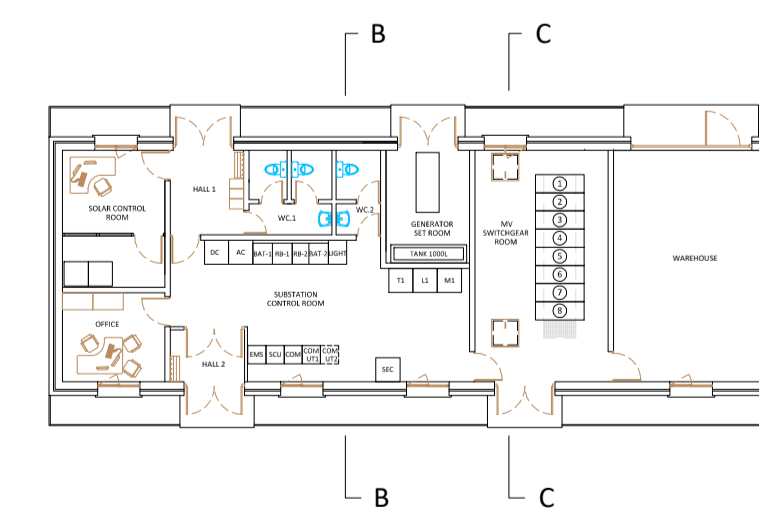
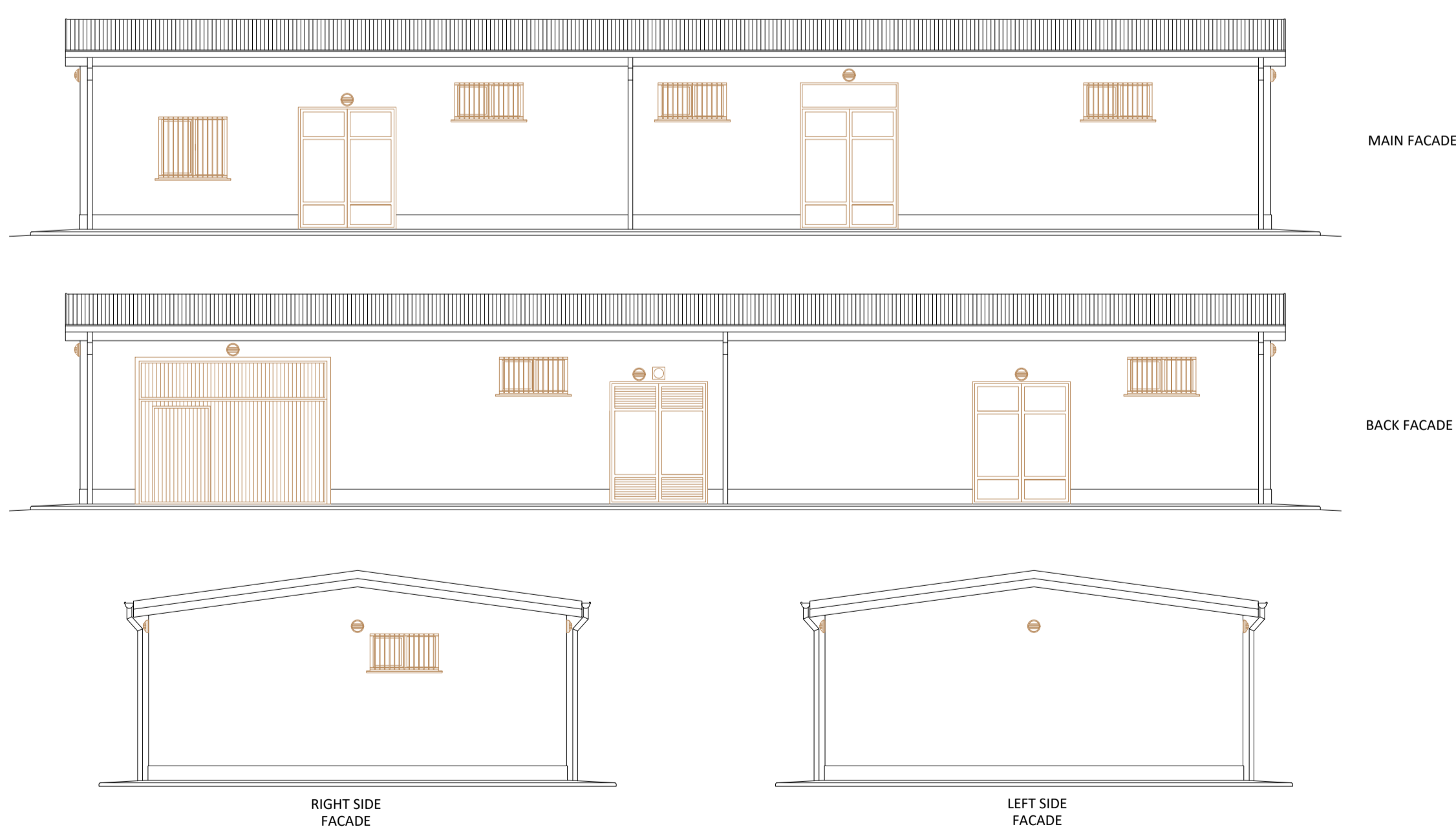


CROSS SECTION B-B



CROSS SECTION C-C

Viste - Scala 1:100



| | | | | | | | | | | | |
|-------|------|-------|---------|------------------------|--------------|-------|----|--|------------------|-----------------------------|---------------|
| | | | | DATE | SCALE | 1/100 | | | | SCM Ingegneria srl | |
| | | | | 03/22 | DRAWN | DC | | | CAD Vers.: i | | Page Vers.: A |
| | | | | 03/22 | CHECKED | DC | | | Name collection: | | Page: 01 |
| | | | | 03/22 | REVISED-EDPR | ST | | | Collection | | Cont: . |
| | | | | PRIMA EMISSIONE PER AU | | | | TAV.07 - PLANIMETRIA, VISTE E SEZIONI EDIFICIO TECNOLOGICO - STAZIONE UTENTE | | CAD N°: Tav.07 - Planimetri | |
| | | | | MODIFICATION | | | | Comuni di Mesagne (BR) e Latiano (BR) | | | |
| EDIC. | DATE | DRAWN | CHECKED | REVISED-EDPR | | | | | | | |
| | | | | | 10 | 11 | 12 | 13 | 14 | 15 | 16 |