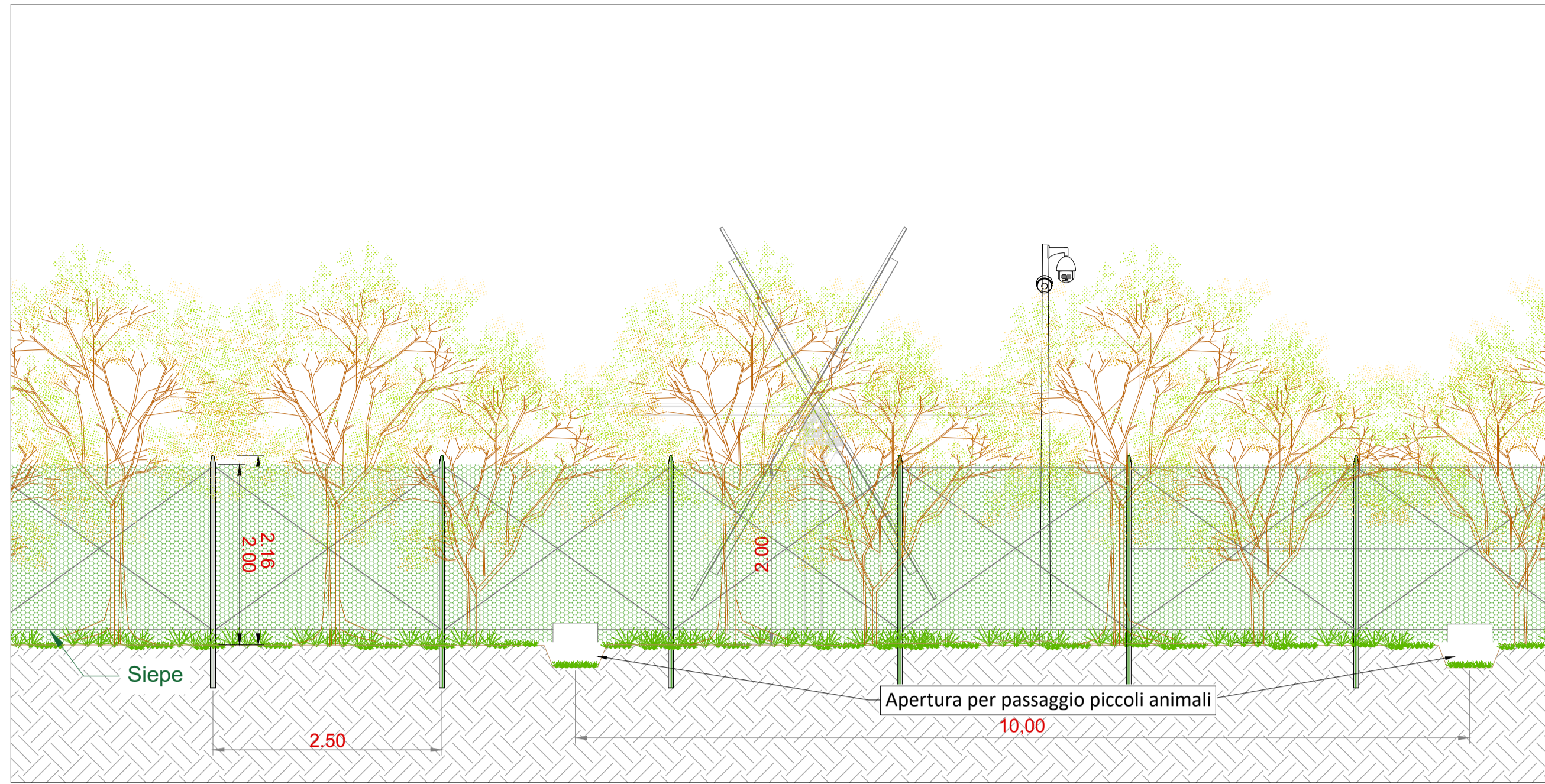
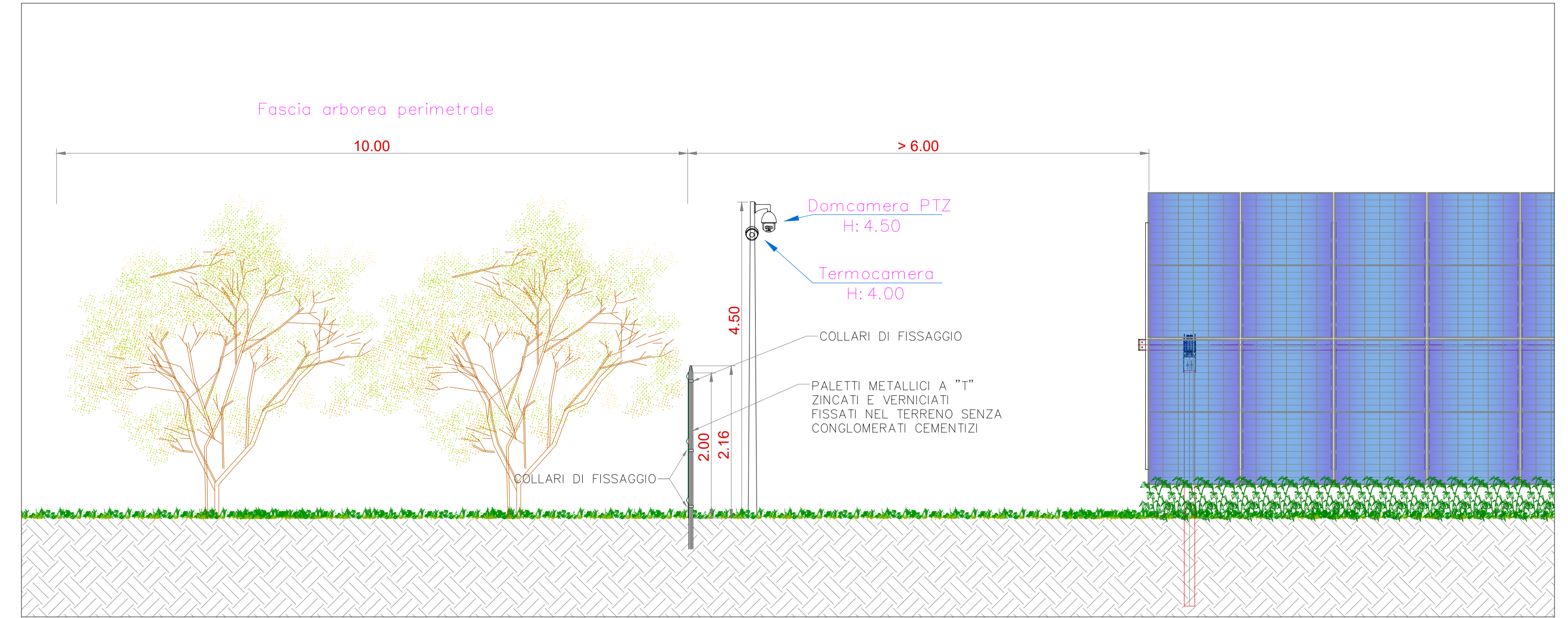


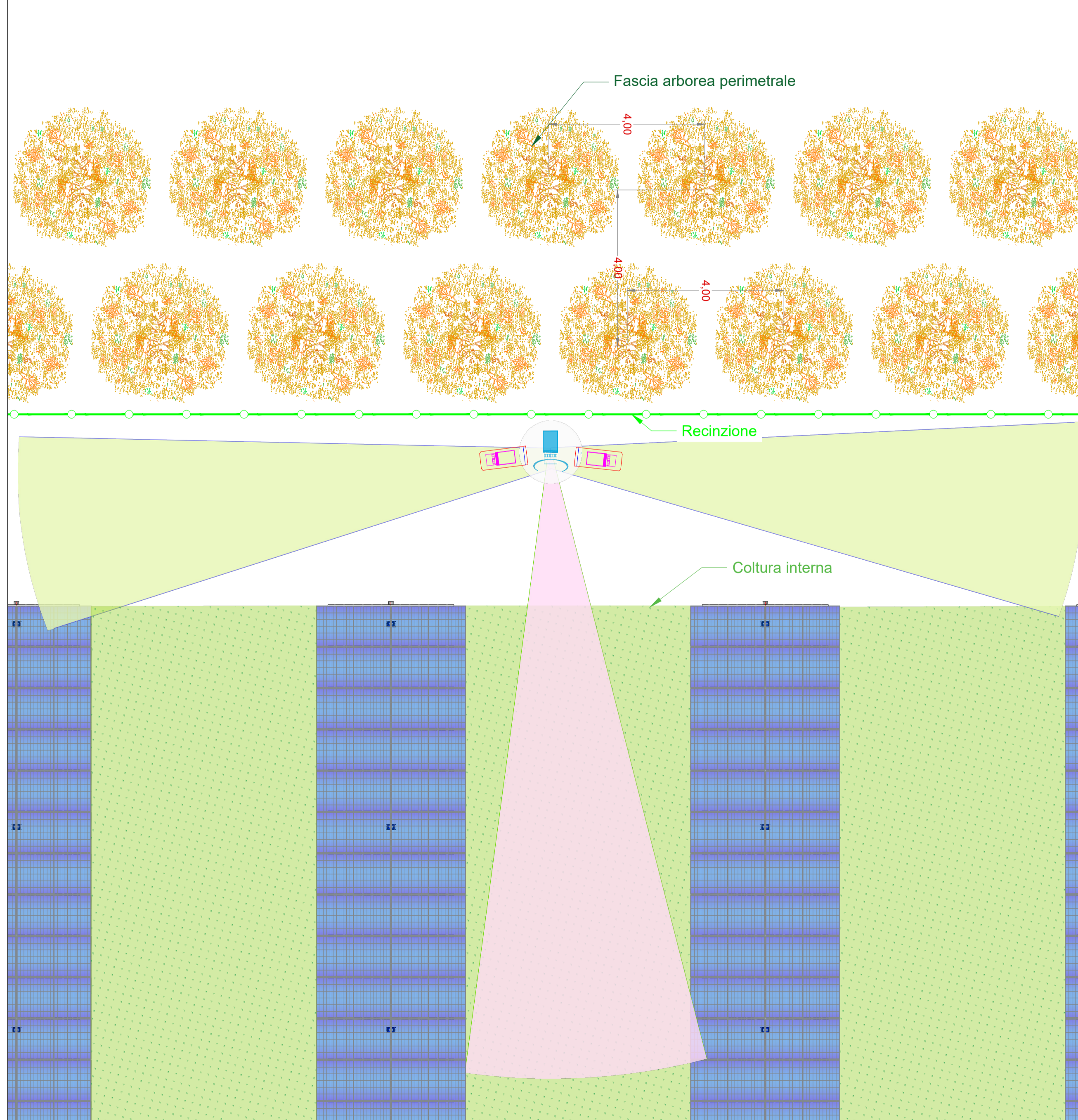
Vista frontale - Tipologia B - Scala 1:50



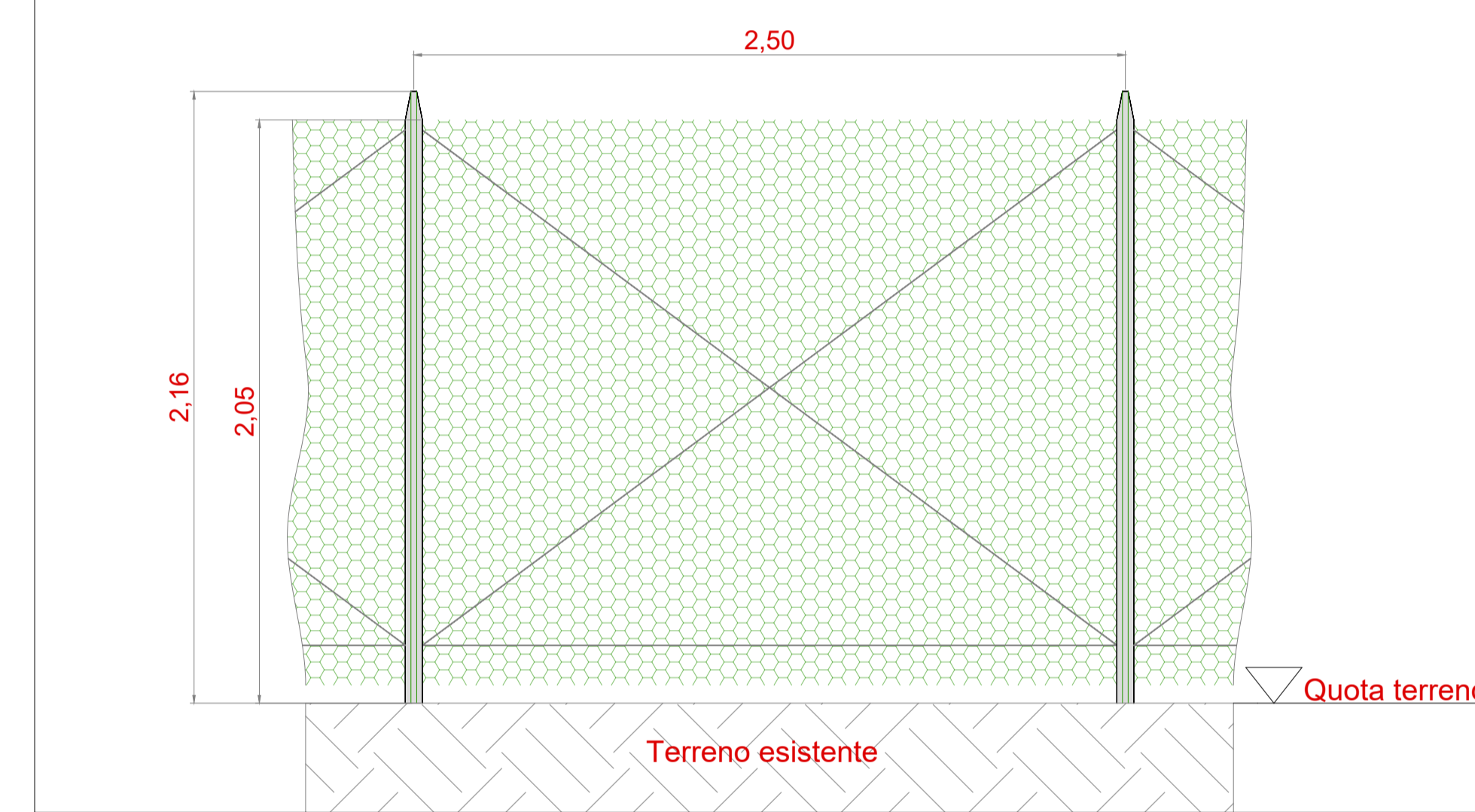
Sezione trasversale - Tipologia B - Scala 1:50



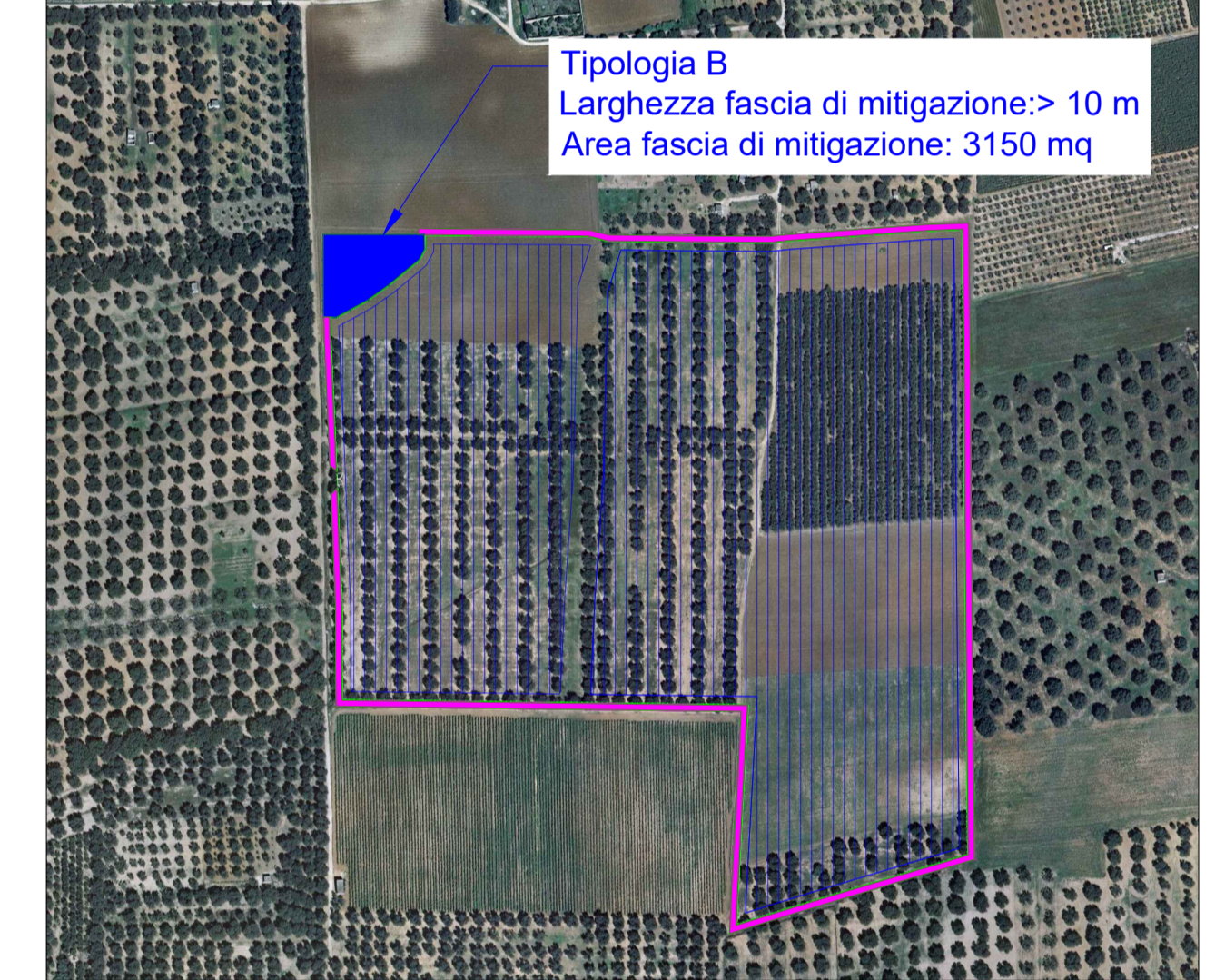
Pianta - Tipologia B - Scala 1:100



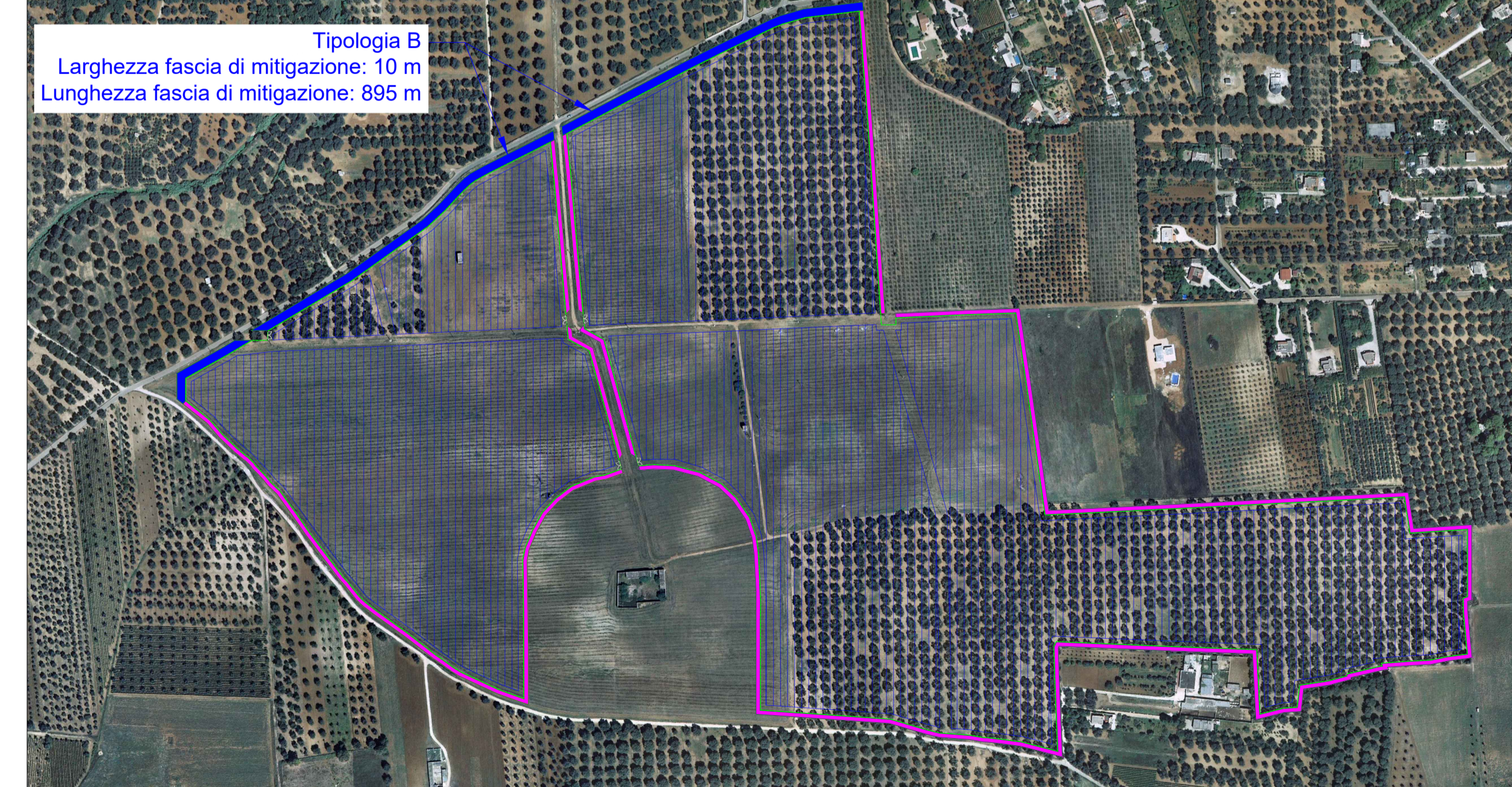
Tipico prospetto recinzione



Schema planimetrico recinzione - Aree d'impianto 2 - Scala 1:5000



Schema planimetrico recinzione - Aree d'impianto 1 - Scala 1:5000



|       |            |       |         |              |              |        |              |       |  |
|-------|------------|-------|---------|--------------|--------------|--------|--------------|-------|--|
| D     |            |       |         |              |              | DATE   | SCALE        | Varie | <b>edp renewables</b><br>Engineering SCM Ingegneria<br>SCM Ingegneria srl<br>Name collection: PROGETTO IMPIANTO AGROFOTOVOLTAICO "Corciolo"<br>Collection: TAV.346 - TYPICO RECINZIONE, SISTEMA TVCC E FASCIA ARBOREA PERIMETRALE - TIPO B<br>Comuni di Mesagne (BR) e Latiano (BR)<br>Cont: -<br>CAD N°: Tav.34 - Tipico recinz |
| C     |            |       |         |              |              | 03/22  | DRAWN        | DC    |  |
| B     |            |       |         |              |              | 03/22  | CHECKED      | DC    |  |
| A     | 10/03/2022 | DC    | DC      | ST           |              | 03/22  | REVISED-EDPR | ST    |  |
| EDIC. | DATE       | DRAWN | CHECKED | REVISED-EDPR | MODIFICATION | Format | A1           |       |  |