



PROGETTO PER LA RELAZIONE DI UN IMPIANTO AGRO FOTVOLTAICO DI POTENZA DI GENERAZIONE PARI A 49,08 MW_p E POTENZA IN IMMISSIONE PARI A 45 MW DENOMINATO "MELILLI" UBICATO NELLE CONTRADE CASITTE E S. GIULIANO NEL COMUNE DI MELILLI (SR).

OGGETTO

PROGETTO DEFINITIVO

ELABORATO

Datasheet main equipment

Codice elaborato	Data	Livello di progettazione	Emesso	Verificato	Approvato	REV.
22-MLLI-PR.22	LUG 2022	DEFINITIVO	A. Tosto	Ing. G. Vicino		00

Società proponente

Timbri e firme

MELILLI 1 SOLAR S.R.L.
Viale Abruzzi 94
20131 Milano (MI)
P.IVA: 16253191007

Progettazione

Progettazione

Timbri e firme



E-PRIMA

E-PRIMA S.R.L.
Via Manganelli 20/G
95030 Nicolosi (CT)
tel:095914116 - cell:3339533392
email:info@e-prima.eu



CRIANSA ENGINEERING
S.R.L.
Via Aurelia 1.100
00166 Roma (RM)



BiHiKu7

BIFACIAL MONO PERC

640 W ~ 665 W

CS7N-640 | 645 | 650 | 655 | 660 | 665MB-AG



FRONT

BACK

MORE POWER

- Module power up to 665 W
Module efficiency up to 21.4 %
- Up to 8.9 % lower LCOE
Up to 4.6 % lower system cost
- Comprehensive LID / LeTID mitigation technology, up to 50% lower degradation
- Compatible with mainstream trackers, cost effective product for utility power plant
- Better shading tolerance

MORE RELIABLE

- 40 °C lower hot spot temperature, greatly reduce module failure rate
- Minimizes micro-crack impacts
- Heavy snow load up to 5400 Pa, wind load up to 2400 Pa*

Enhanced Product Warranty on Materials and Workmanship*

Linear Power Performance Warranty*

1st year power degradation no more than 2%
Subsequent annual power degradation no more than 0.45%

*According to the applicable Canadian Solar Limited Warranty Statement.

MANAGEMENT SYSTEM CERTIFICATES*

ISO 9001:2015 / Quality management system
ISO 14001:2015 / Standards for environmental management system
ISO 45001: 2018 / International standards for occupational health & safety

PRODUCT CERTIFICATES*

IEC 61215 / IEC 61730 / CE / INMETRO / MCS / UKCA
CEC listed (US California) / FSEC (US Florida)
UL 61730 / IEC 61701 / IEC 62716 / IEC 60068-2-68
Take-e-way



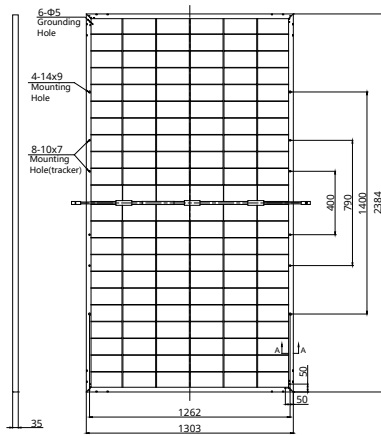
* The specific certificates applicable to different module types and markets will vary, and therefore not all of the certifications listed herein will simultaneously apply to the products you order or use. Please contact your local Canadian Solar sales representative to confirm the specific certificates available for your Product and applicable in the regions in which the products will be used.

CSI Solar Co., Ltd. is committed to providing high quality solar photovoltaic modules, solar energy and battery storage solutions to customers. The company was recognized as the No. 1 module supplier for quality and performance/price ratio in the IHS Module Customer Insight Survey. Over the past 20 years, it has successfully delivered over 63 GW of premium-quality solar modules across the world.

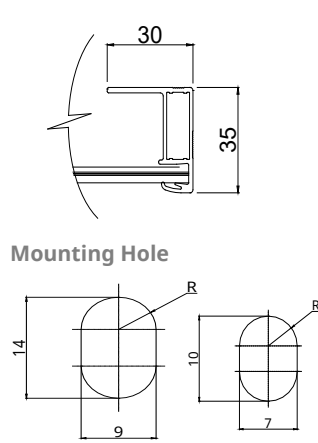
* For detailed information, please refer to the Installation Manual.

ENGINEERING DRAWING (mm)

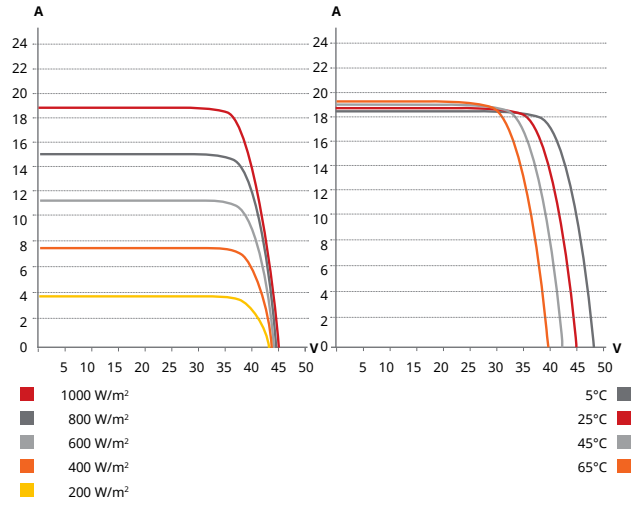
Rear View



Frame Cross Section A-A



CS7N-650MB-AG / I-V CURVES



ELECTRICAL DATA | STC*

	Nominal Max. Power (Pmax)	Opt. Operating Voltage (Vmp)	Opt. Operating Current (Imp)	Open Circuit Voltage (Voc)	Short Circuit Current (Isc)	Module Efficiency
CS7N-640MB-AG	640 W	37.5 V	17.07 A	44.6 V	18.31 A	20.6%
Bifacial Gain**	5%	672 W	37.5 V	17.92 A	44.6 V	21.6%
	10%	704 W	37.5 V	18.78 A	44.6 V	22.7%
	20%	768 W	37.5 V	20.48 A	44.6 V	24.7%
CS7N-645MB-AG	645 W	37.7 V	17.11 A	44.8 V	18.35 A	20.8%
Bifacial Gain**	5%	677 W	37.7 V	17.97 A	44.8 V	21.8%
	10%	710 W	37.7 V	18.84 A	44.8 V	22.9%
	20%	774 W	37.7 V	20.53 A	44.8 V	24.9%
CS7N-650MB-AG	650 W	37.9 V	17.16 A	45.0 V	18.39 A	20.9%
Bifacial Gain**	5%	683 W	37.9 V	18.03 A	45.0 V	22.0%
	10%	715 W	37.9 V	18.88 A	45.0 V	23.0%
	20%	780 W	37.9 V	20.59 A	45.0 V	25.1%
CS7N-655MB-AG	655 W	38.1 V	17.20 A	45.2 V	18.43 A	21.1%
Bifacial Gain**	5%	688 W	38.1 V	18.06 A	45.2 V	22.1%
	10%	721 W	38.1 V	18.93 A	45.2 V	23.2%
	20%	786 W	38.1 V	20.64 A	45.2 V	25.3%
CS7N-660MB-AG	660 W	38.3 V	17.24 A	45.4 V	18.47 A	21.2%
Bifacial Gain**	5%	693 W	38.3 V	18.10 A	45.4 V	22.3%
	10%	726 W	38.3 V	18.96 A	45.4 V	23.4%
	20%	792 W	38.3 V	20.69 A	45.4 V	25.5%
CS7N-665MB-AG	665 W	38.5 V	17.28 A	45.6 V	18.51 A	21.4%
Bifacial Gain**	5%	698 W	38.5 V	18.14 A	45.6 V	22.5%
	10%	732 W	38.5 V	19.02 A	45.6 V	23.6%
	20%	798 W	38.5 V	20.74 A	45.6 V	25.7%

* Under Standard Test Conditions (STC) of irradiance of 1000 W/m², spectrum AM 1.5 and cell temperature of 25°C.

** Bifacial Gain: The additional gain from the back side compared to the power of the front side at the standard test condition. It depends on mounting (structure, height, tilt angle etc.) and albedo of the ground.

ELECTRICAL DATA

Operating Temperature	-40°C ~ +85°C
Max. System Voltage	1500 V (IEC/UL) or 1000 V (IEC/UL)
Module Fire Performance	TYPE 29 (UL 61730) or CLASS C (IEC61730)
Max. Series Fuse Rating	35 A
Application Classification	Class A
Power Tolerance	0 ~ + 10 W
Power Bifaciality*	70 %

* Power Bifaciality = $P_{max, rear} / P_{max, front}$, both $P_{max, rear}$ and $P_{max, front}$ are tested under STC, Bifaciality Tolerance: $\pm 5\%$

* The specifications and key features contained in this datasheet may deviate slightly from our actual products due to the on-going innovation and product enhancement. CSI Solar Co., Ltd. reserves the right to make necessary adjustment to the information described herein at any time without further notice.

Please be kindly advised that PV modules should be handled and installed by qualified people who have professional skills and please carefully read the safety and installation instructions before using our PV modules.

ELECTRICAL DATA | NMOT*

	Nominal Max. Power (Pmax)	Opt. Operating Voltage (Vmp)	Opt. Operating Current (Imp)	Open Circuit Voltage (Voc)	Short Circuit Current (Isc)
CS7N-640MB-AG	480 W	35.2 V	13.64 A	42.2 V	14.77 A
CS7N-645MB-AG	484 W	35.3 V	13.72 A	42.3 V	14.80 A
CS7N-650MB-AG	487 W	35.5 V	13.74 A	42.5 V	14.83 A
CS7N-655MB-AG	491 W	35.7 V	13.76 A	42.7 V	14.86 A
CS7N-660MB-AG	495 W	35.9 V	13.79 A	42.9 V	14.89 A
CS7N-665MB-AG	499 W	36.1 V	13.83 A	43.1 V	14.93 A

* Under Nominal Module Operating Temperature (NMOT), irradiance of 800 W/m², spectrum AM 1.5, ambient temperature 20°C, wind speed 1 m/s.

MECHANICAL DATA

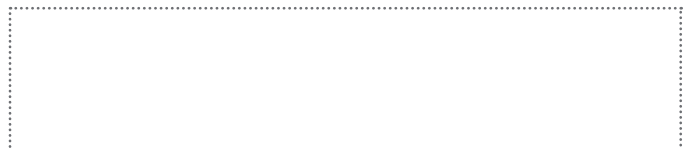
Specification	Data
Cell Type	Mono-crystalline
Cell Arrangement	132 [2 x (11 x 6)]
Dimensions	2384 x 1303 x 35 mm (93.9 x 51.3 x 1.38 in)
Weight	37.9 kg (83.6 lbs)
Front Glass	2.0 mm heat strengthened glass with anti-reflective coating
Back Glass	2.0 mm heat strengthened glass
Frame	Anodized aluminium alloy
J-Box	IP68, 3 bypass diodes
Cable	4.0 mm ² (IEC), 10 AWG (UL)
Cable Length (Including Connector)	460 mm (18.1 in) (+) / 340 mm (13.4 in) (-) or customized length*
Connector	T4 series or MC4-EVO2
Per Pallet	31 pieces
Per Container (40' HQ)	527 pieces or 465 pieces (only for US)

* For detailed information, please contact your local Canadian Solar sales and technical representatives.

TEMPERATURE CHARACTERISTICS

Specification	Data
Temperature Coefficient (Pmax)	-0.34 % / °C
Temperature Coefficient (Voc)	-0.26 % / °C
Temperature Coefficient (Isc)	0.05 % / °C
Nominal Module Operating Temperature	41 \pm 3°C

PARTNER SECTION



STS-3000K-H1

Smart Transformer Station



Simple

Prefabricated and Pre-tested, No Internal Cabling Needed Onsite
Compact 20' HC Container Design for Easy Transportation



Efficient

High Efficiency Transformer for Higher Yields
Lower Self-consumption for Higher Yields



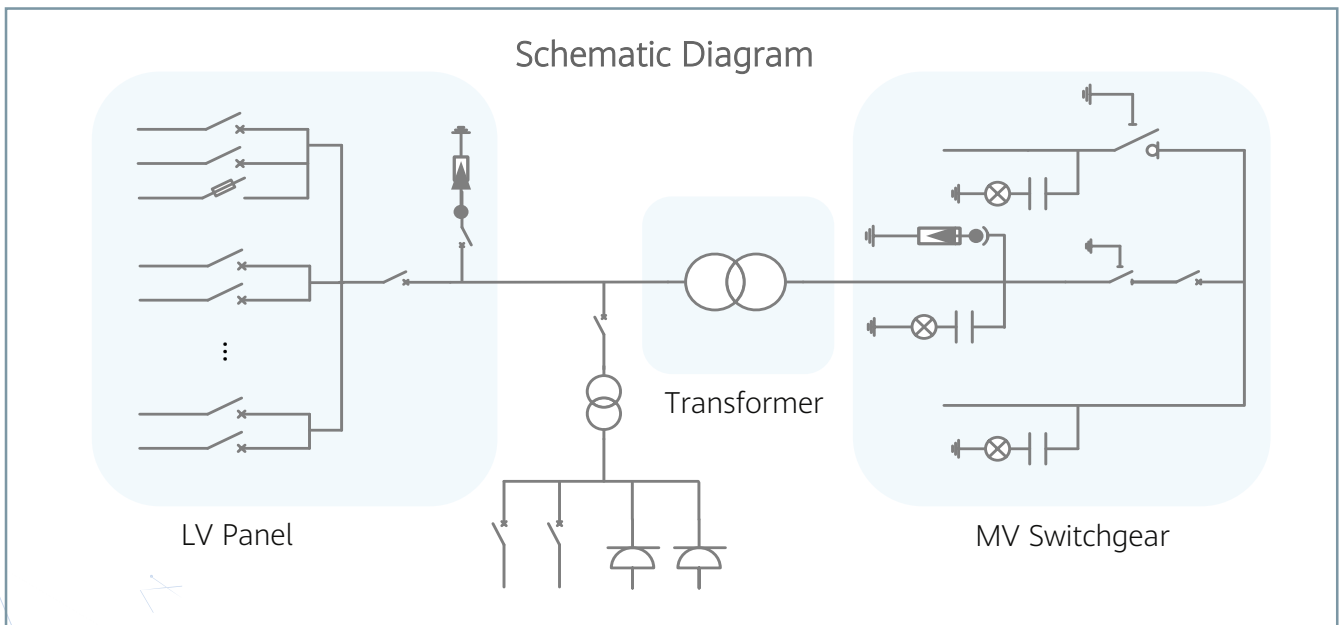
Smart

Real-time Monitoring of Transformer, LV Panel and MV Switchgear
0.2% High Precision Sensor of LV Electricity Parameters
Remote Control of ACB and MV Circuit Breaker



Reliable

Robust Design against Harsh Environments
Optimal Cooling Design for High Availability and Easy O&M
Comprehensive Tests from Components, Device to Solution



STS-3000K-H1 (Preliminary)
Technical Specifications

Input		
Available Inverters	SUN2000-200KTL-H2 / SUN2000-215KTL-H0	
AC Power	3,250 kVA @40°C / 2,960 kVA @50°C ¹	
Max. Inverters Quantity	16	
Rated Input Voltage	800 V	
Max. Input Current at Nominal Voltage	2,482.7 A	
LV Main Switches	ACB (2900 A / 800 V / 3P, 1 pcs), MCCB (250 A / 800 V / 3P, 16 pcs)	
Output		
Rated Output Voltage	10 kV, 11 kV, 15 kV, 20 kV, 22 kV, 23 kV, 30 kV, 33 kV, 35 kV ²	13.8 kV, 34.5 kV ²
Frequency	50 Hz	60 Hz
Transformer Type	Oil-immersed, Conservator Type	
Transformer Tappings	± 2 x 2.5%	
Transformer Oil Type	Mineral Oil (PCB Free)	
Transformer Vector Group	Dy11	
Transformer Min. Peak Efficiency Index	In accordance with EN 50588-1	
Transformer Load Losses	≤ 30.1 kW	
Transformer No-load Losses	≤ 2.51 kW	
Impedance (HV-LV1, LV2)	7% (0 ~ +10%) @3,250 kVA	
MV Switchgear Type	SF6 Gas Insulated, 3 Units	
MV Switchgear Configuration	1 Transformer Unit with Circuit Breaker 1 Cable Unit with Load Breaker Switch 1 Cable Direct Connection Unit	
Auxiliary Transformer	Dry Type Transformer, 5 kVA, Dyn11	
Output Voltage of Auxiliary Transformer	400 / 230 Vac	220 / 127 Vac
Protection		
Transformer Monitoring & Protection	Oil Level, Oil Temperature, Oil Pressure and Buchholz	
Protection Degree of MV & LV Room	IP 54	
Internal Arcing Fault MV Switchgear	IAC A 20 kA 1s	
MV Relay Protection	50/51, 50N/51N	
MV Surge Arrester for MV Circuit Breaker	Equipped	
LV Overvoltage Protection	Type I+II	
General		
Dimensions (W x H x D)	6,058 x 2,896 x 2,438 mm (20' HC Container)	
Weight	< 15 t (33,069 lb.)	
Operating Temperature Range	-25°C ~ 60°C ³ (-13°F ~ 140°F)	
Relative Humidity	0% ~ 95%	
Max. Operating Altitude	2,000 m (6,562 ft.)	2,500 m (8,202 ft.)
Enclosure Color	RAL 9003	
Communication	Modbus-RTU, Preconfigured with Smartlogger3000B	
Applicable Standards	IEC 62271-202, EN 50588-1, IEC 60076, IEC 62271-200, IEC 61439-1	
Features		
Auxiliary Transformer (50 kVA, Dyn11)	Optional ⁴	
1.5 kVA UPS	Optional ⁴	
MV Switchgear Updated to: 1 transformer unit with circuit breaker 2 cable units with load breaker switch	Optional ⁴	
Updated to 25kA 1s MV Switchgear	Optional ⁴	
IMD	Optional ⁴	
STS Interlocking	Optional ⁴	

- 1 - More detailed AC power of STS, please refer to the de-rating curve.
2 - Rated output voltage from 10 kV to 35 kV, more available upon request
3 - When ambient temperature ≥55°C, awning shall be equipped for STS on site by customer.
4 - Extra expense needed for optional features which standard product doesn't contain.

STS-6000K-H1

Smart Transformer Station



Simple

Prefabricated and Pre-tested, No Internal Cabling Needed Onsite
Compact 20' HC Container Design for Easy Transportation



Efficient

High Efficiency Transformer for Higher Yields
Lower Self-consumption for Higher Yields



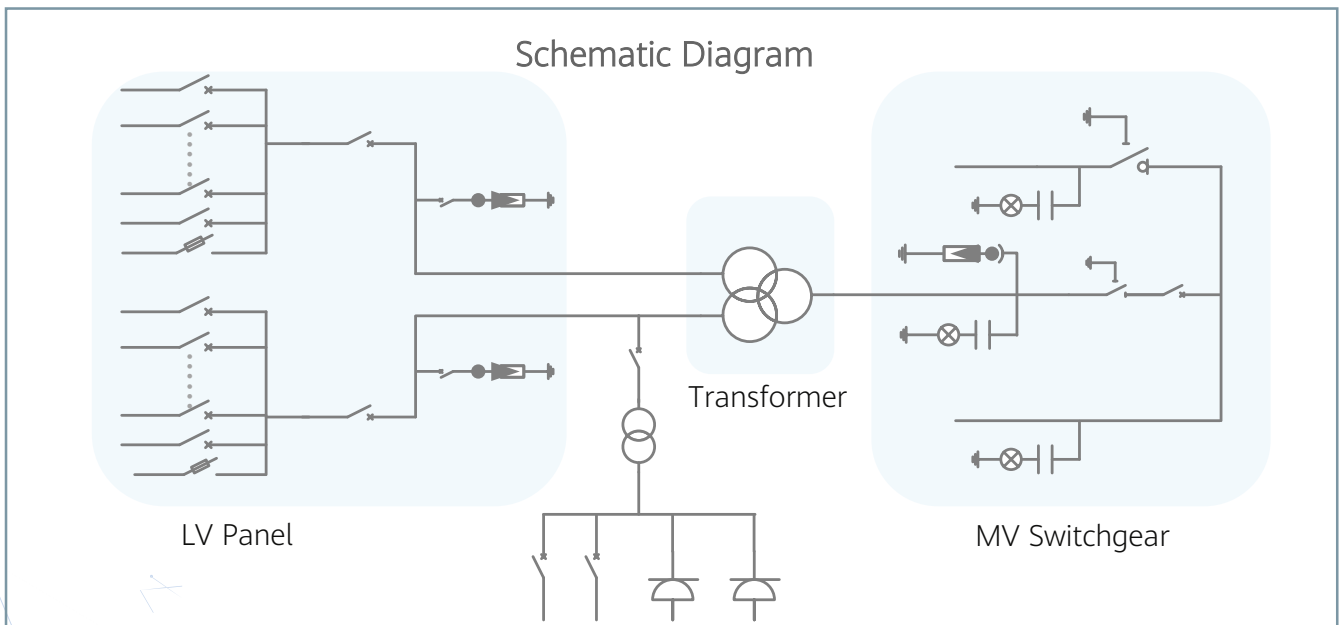
Smart

Real-time Monitoring of Transformer, LV Panel and MV Switchgear
0.2% High Precision Sensor of LV Electricity Parameters
Remote Control of ACB and MV Circuit Breaker



Reliable

Robust Design against Harsh Environments
Optimal Cooling Design for High Availability and Easy O&M
Comprehensive Tests from Components, Device to Solution



STS-6000K-H1 (Preliminary)
Technical Specifications

Input		
Available Inverters	SUN2000-200KTL-H2 / SUN2000-215KTL-H0	
AC Power	6,500 kVA @40°C / 5,920 kVA @50°C ¹	
Max. Inverters Quantity	32	
Rated Input Voltage	800 V	
Max. Input Current at Nominal Voltage	2,482.7 A x 2	
LV Main Switches	ACB (2900 A / 800 V / 3P, 2 x 1 pcs), MCCB (250 A / 800 V / 3P, 2 x 16 pcs)	
Output		
Rated Output Voltage	10 kV, 11 kV, 15 kV, 20 kV, 22 kV, 23 kV, 30 kV, 33 kV, 35 kV ²	13.8 kV, 34.5 kV ²
Frequency	50 Hz	60 Hz
Transformer Type	Oil-immersed, Conservator Type	
Transformer Tappings	± 2 x 2.5%	
Transformer Oil Type	Mineral Oil (PCB Free)	
Transformer Vector Group	Dy11-y11	
Transformer Min. Peak Efficiency Index	In Accordance with EN 50588-1	
Transformer Load Losses	≤ 50.1 kW	≤ 41.7 kW
Transformer No-load Losses	≤ 5.0 kW	≤ 6.0 kW
Impedance (HV-LV1, LV2)	8% (0 ~ +10%) @6,500 kVA	
MV Switchgear Type	SF6 Gas Insulated, 3 Units	
MV Switchgear Configuration	1 Transformer Unit with Circuit Breaker 1 Cable Unit with Load Breaker Switch 1 Cable Direct Connection Unit	
Auxiliary Transformer	Dry Type Transformer, 5 kVA, Dyn11	
Output Voltage of Auxiliary Transformer	400 / 230 Vac	220 / 127 Vac
Protection		
Transformer Monitoring & Protection	Oil Level, Oil Temperature, Oil Pressure and Buchholz	
Protection Degree of MV & LV Room	IP 54	
Internal Arcing Fault MV Switchgear	IAC A 20 kA 1s	
MV Relay Protection	50/51, 50N/51N	
MV Surge Arrester for MV Circuit Breaker	Equipped	
LV Overvoltage Protection	Type I+II	
General		
Dimensions (W x H x D)	6,058 x 2,896 x 2,438 mm (20' HC Container)	
Weight	< 22 t (48,502 lb.)	
Operating Temperature Range	-25°C ~ 60°C ³ (-13°F ~ 140°F)	
Relative Humidity	0% ~ 95%	
Max. Operating Altitude	2,000 m (6,562 ft.)	2,500 m (8,202 ft.)
Enclosure Color	RAL 9003	
Communication	Modbus-RTU, Preconfigured with Smartlogger3000B	
Applicable Standards	IEC 62271-202, EN 50588-1, IEC 60076, IEC 62271-200, IEC 61439-1	
Features		
Auxiliary Transformer (50 kVA, Dyn11)	Optional ⁴	
1.5 kVA UPS	Optional ⁴	
MV Switchgear Updated to: 1 Transformer Unit with Circuit Breaker 2 Cable Units with Load Breaker Switch	Optional ⁴	
Updated to 25kA 1s MV Switchgear	Optional ⁴	
IMD	Optional ⁴	
STS Interlocking	Optional ⁴	

- 1 - More detailed AC power of STS, please refer to the de-rating curve.
2 - Rated output voltage from 10 kV to 35 kV, more available upon request
3 - When ambient temperature ≥55°C, awning shall be equipped for STS on site by customer.
4 - Extra expense needed for optional features which standard product doesn't contain.

SUN2000-215KTL-H3

Smart String Inverter



100A
Per MPPT



99.0%
Max. Efficiency



String-Smart
Switch



Smart I-V Curve
Diagnosis Supported



MBUS
Supported



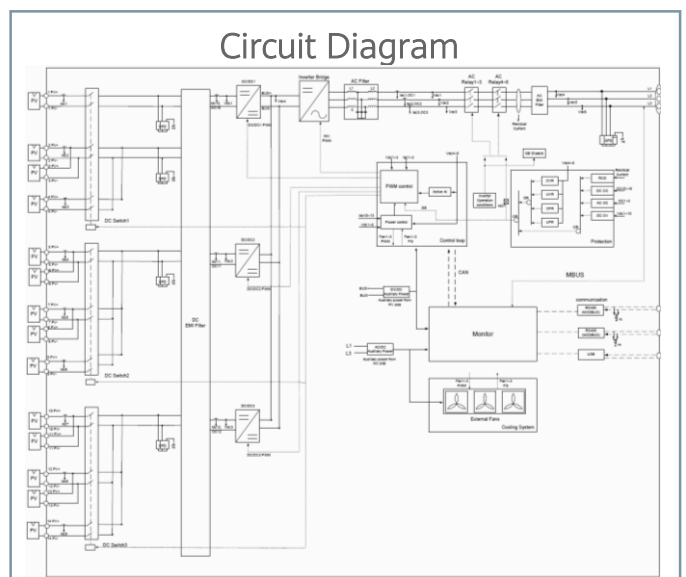
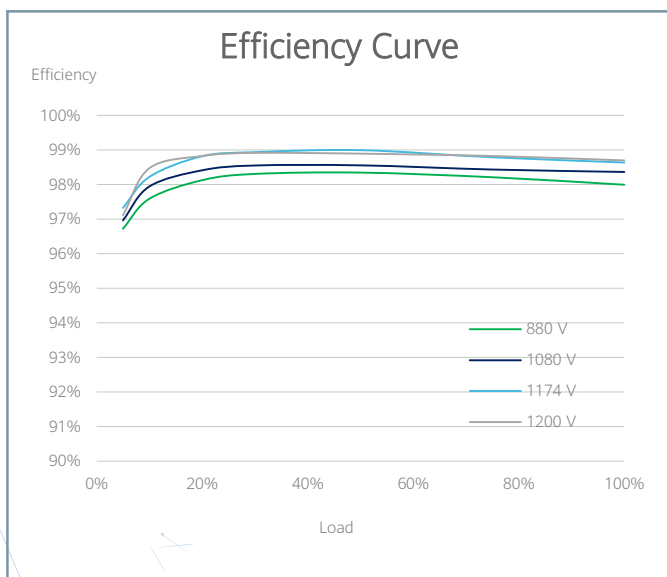
Fuse Free
Design



Surge Arresters for
DC & AC



IP66
Protection



Technical Specifications

Efficiency	
Max. Efficiency	≥99.0%
European Efficiency	≥98.6%
Input	
Max. Input Voltage	1,500 V
Number of MPP Trackers	3
Max. Current per MPPT	100A/100A/100A
Max. PV Inputs per MPPT	4/5/5
Start Voltage	550 V
MPPT Operating Voltage Range	500 V ~ 1,500 V
Nominal Input Voltage	1,080 V
Output	
Nominal AC Active Power	200,000 W
Max. AC Apparent Power	215,000 VA
Max. AC Active Power (cosφ=1)	215,000 W
Nominal Output Voltage	800 V, 3W + PE
Rated AC Grid Frequency	50 Hz / 60 Hz
Nominal Output Current	144.4 A
Max. Output Current	155.2 A
Adjustable Power Factor Range	0.8 LG ... 0.8 LD
Max. Total Harmonic Distortion	< 1%
Protection	
Input-side Disconnection Device	Yes
Anti-islanding Protection	Yes
AC Overcurrent Protection	Yes
DC Reverse-polarity Protection	Yes
PV-array String Fault Monitoring	Yes
DC Surge Arrester	Type II
AC Surge Arrester	Type II
DC Insulation Resistance Detection	Yes
Residual Current Monitoring Unit	Yes
Communication	
Display	LED Indicators, WLAN + APP
USB	Yes
MBUS	Yes
RS485	Yes
General	
Dimensions (W x H x D)	1,035 x 700 x 365 mm (40.7 x 27.6 x 14.4 inch)
Weight (with mounting plate)	≤86 kg (191.8 lb.)
Operating Temperature Range	-25°C ~ 60°C (-13°F ~ 140°F)
Cooling Method	Smart Air Cooling
Max. Operating Altitude without Derating	4,000 m (13,123 ft.)
Relative Humidity	0 ~ 100%
DC Connector	Staubli MC4 EVO2
AC Connector	Waterproof Connector + OT/DT Terminal
Protection Degree	IP66
Topology	Transformerless