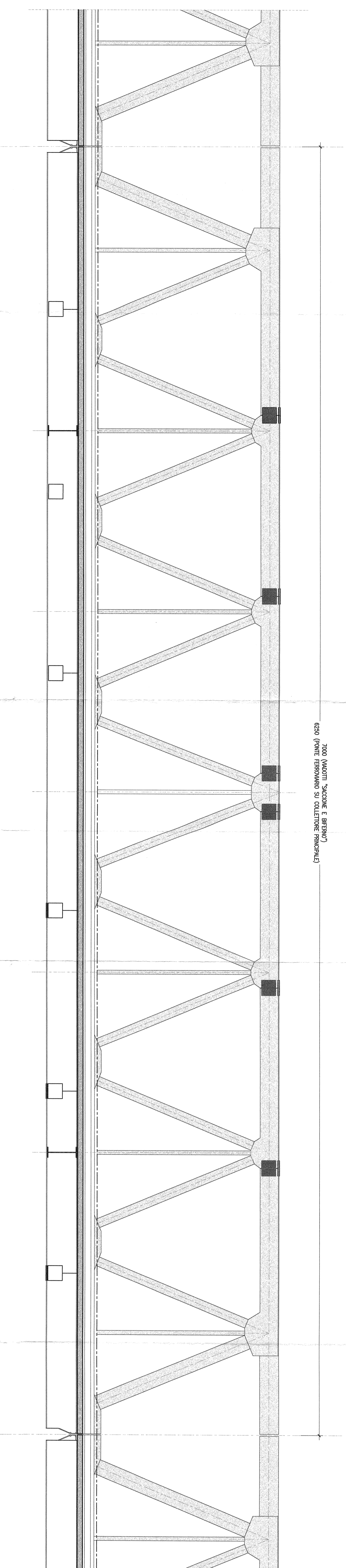


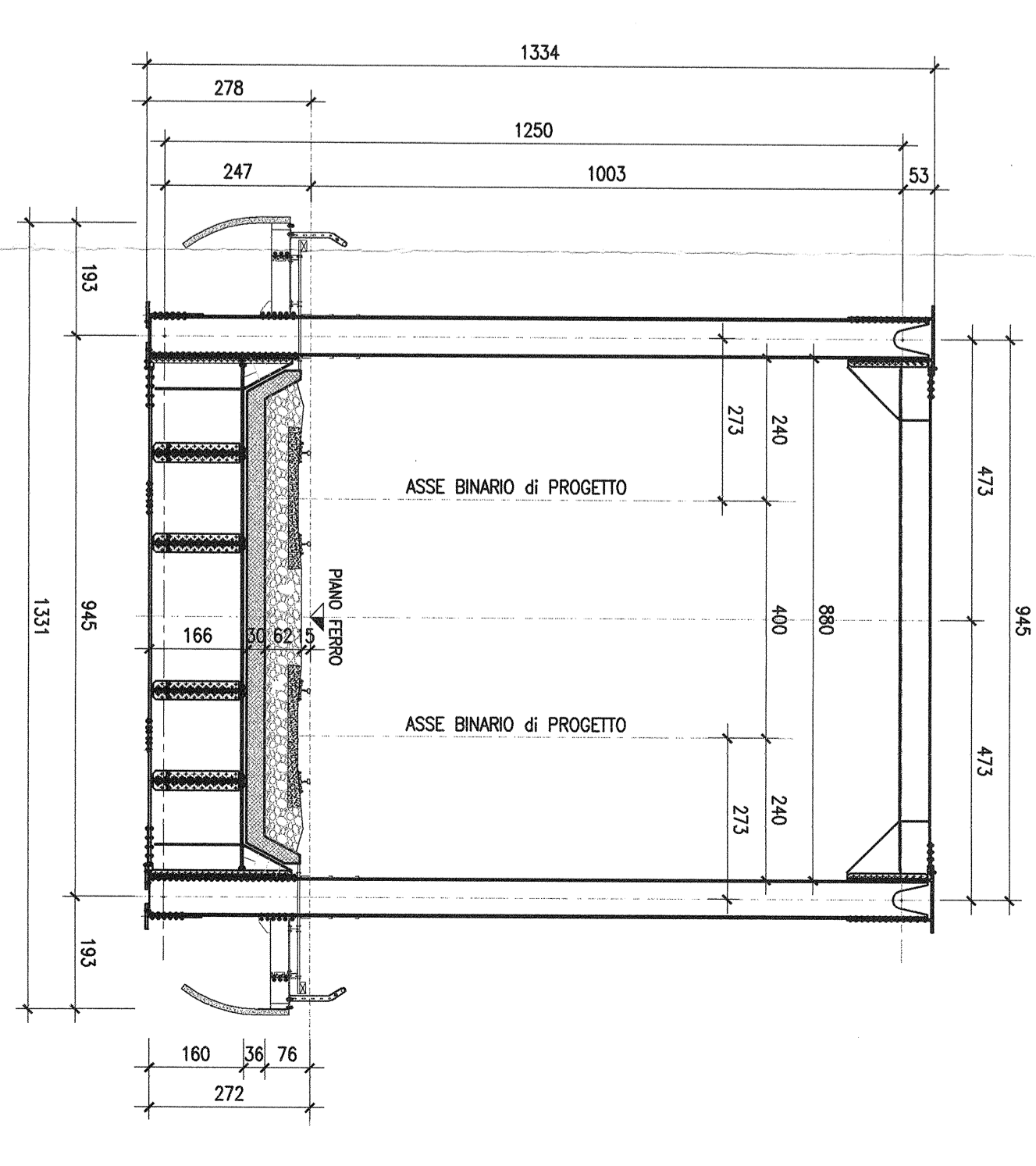
VIADOTTI TIPO A TRAVATA METALLICA A VIA INFERIORE



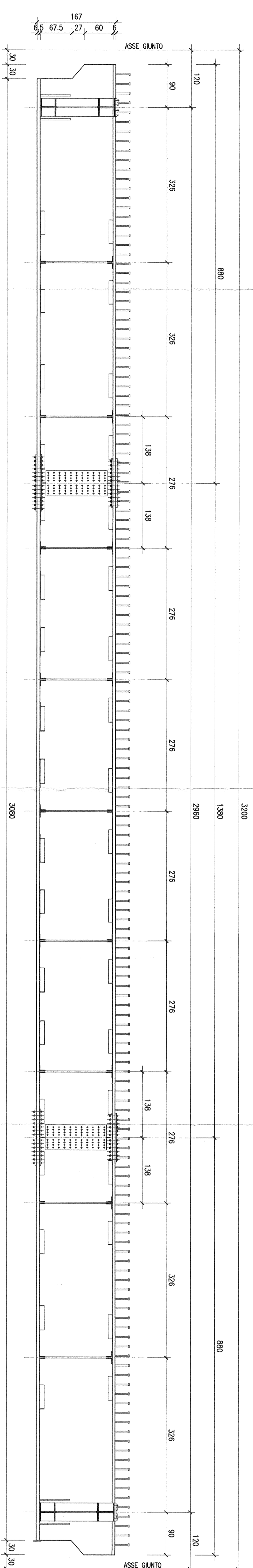
SEZIONE LONGITUDINALE-Scala 1:100

7000 (MONTI, SACCONE E BRISIGNANI)  
6520 (CONTE, BERNARDINI SU COLLETTORI, RICHICCIARDI)

SEZIONE TRASVERSALE TIPO-Scala 1:100

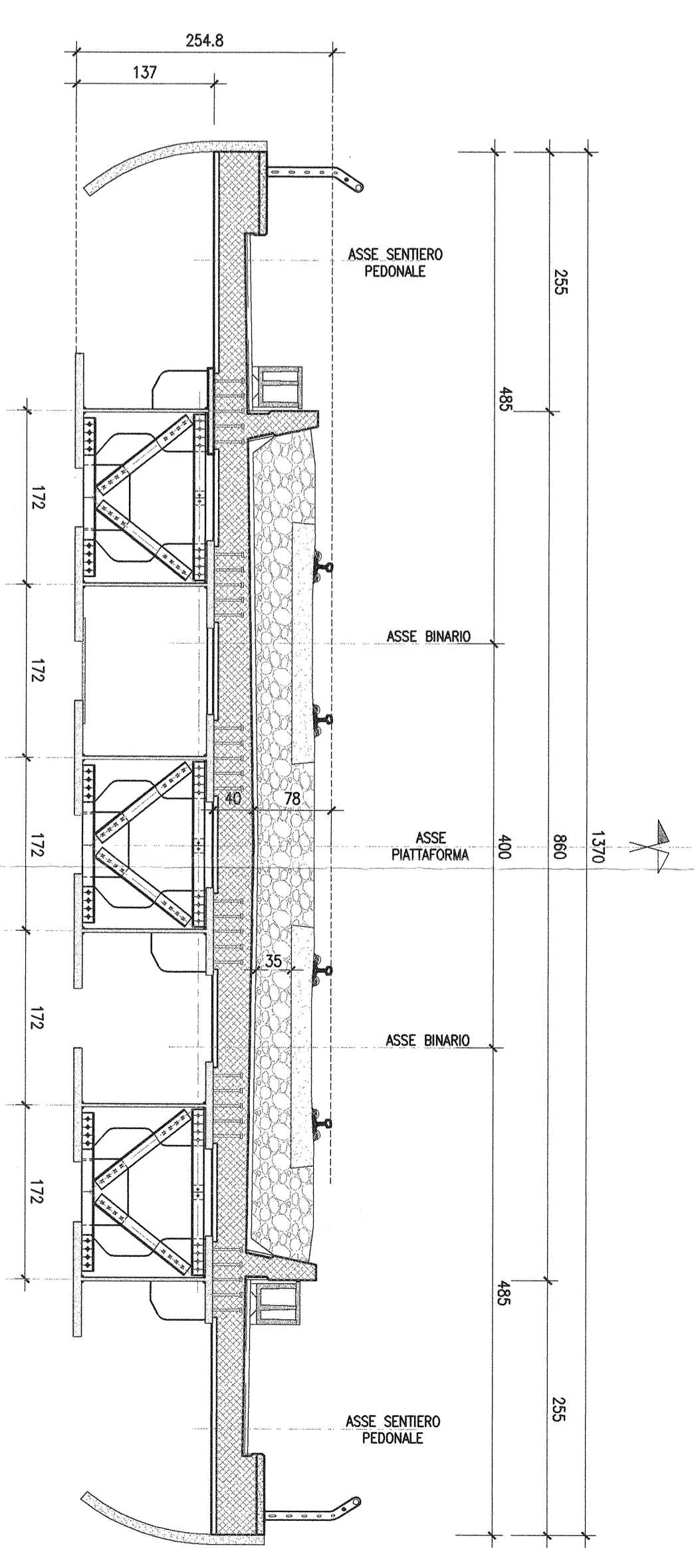


VIADOTTI TIPO A STRUTTURA MISTA A 6 TRAVI

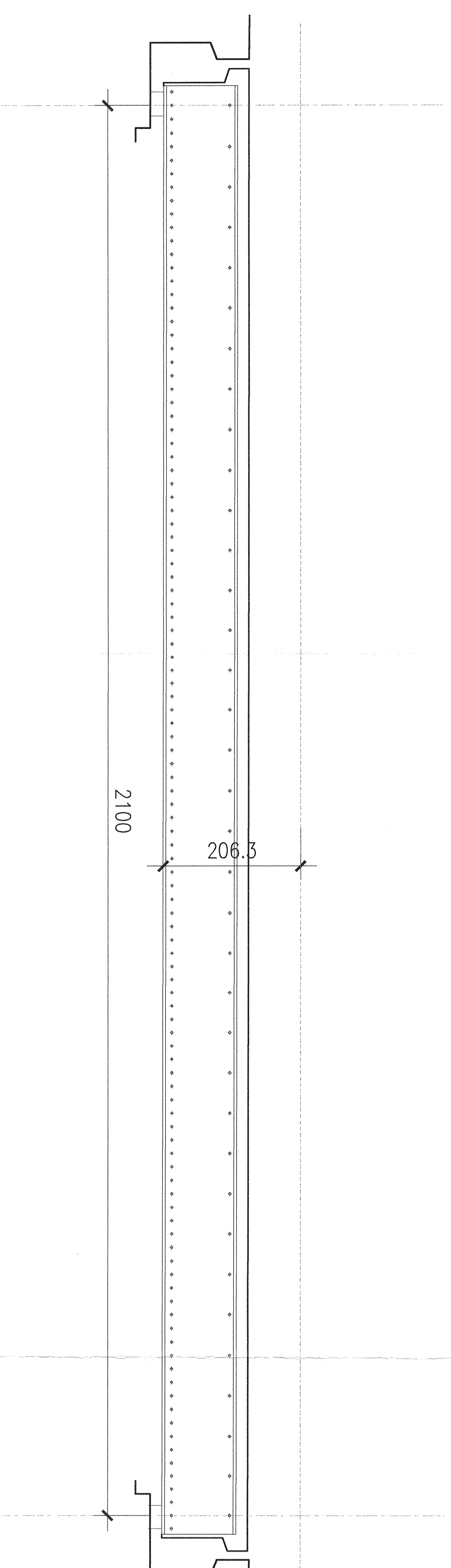


SEZIONE LONGITUDINALE TRAVE-Scala 1:50

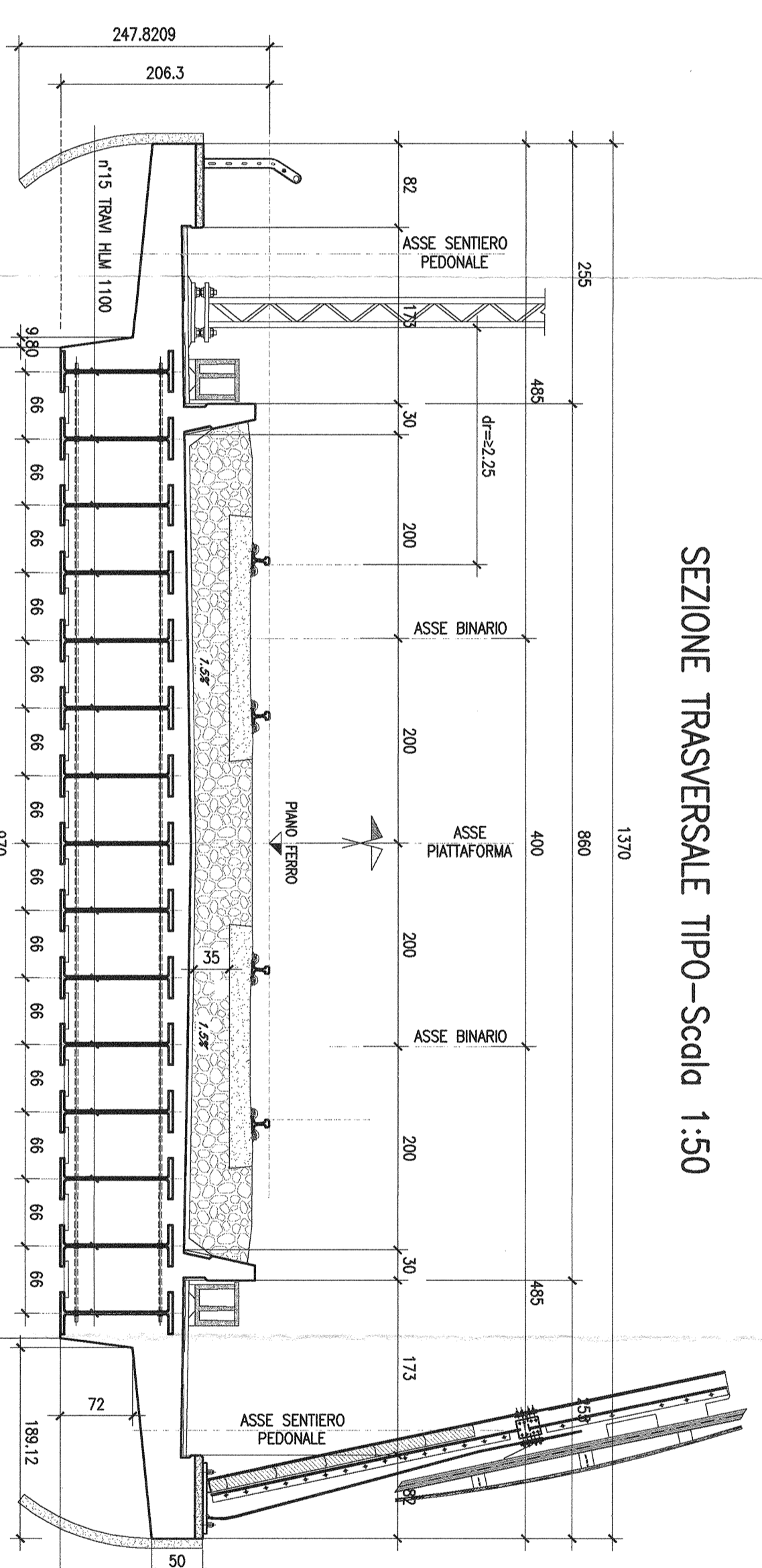
SEZIONE TRASVERSALE TIPO-Scala 1:50



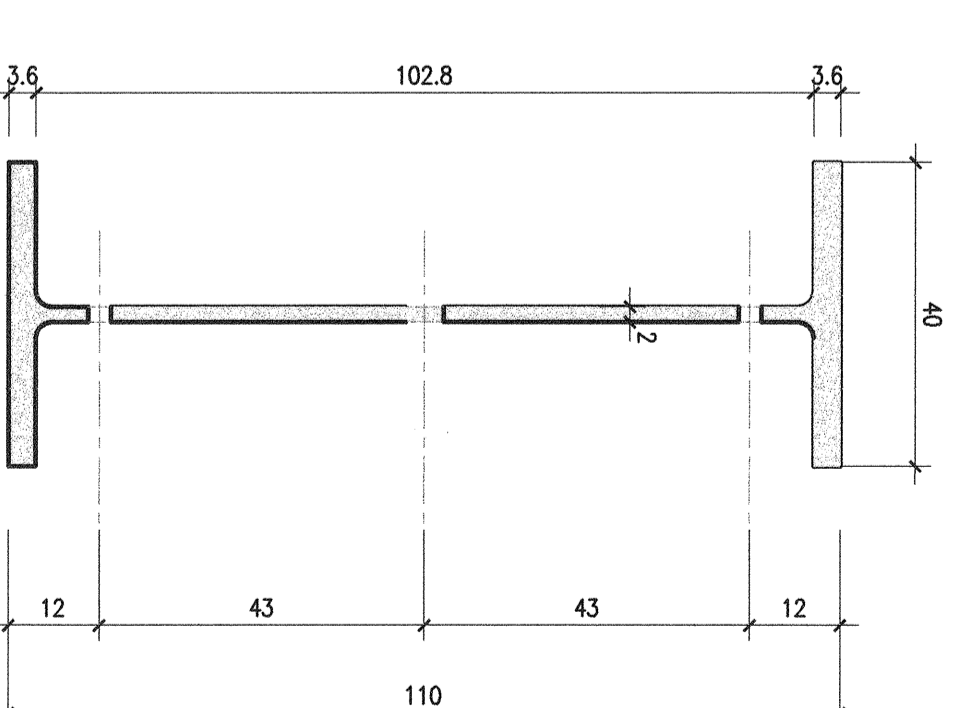
VIADOTTI TIPO A TRAVI INCORPORATE



SEZIONE TRASVERSALE TIPO-Scala 1:50



SEZIONE TRASVERSALE TRAVE TIPO-Scala 1:10



**COMITTEE:**

**PROGETTISTA:**

**U.O. STRUTTURE**

**PROGETTO PRELIMINARE**

**LINEA PESCARA - BARI**

**RADDOPPIO TERMOLI (6) - LESINA (6)**

**LOTTO 00 ELABORATI GENERALI**

Tipologia Viadotti a Travate metalliche a Via inferiore, con soluzione a T.Lie a sezione mista a 6 travi

COMPARSA: LOTTO FASE SINTE TIPO DOC. OPERAZIONE/PIANA PROGR. REV.

1	0	3	2	0	0	R	0	9	P	Z	V	1	0	0	0	0	0	0	4	A
---	---	---	---	---	---	---	---	---	---	---	---	---	---	---	---	---	---	---	---	---

**ITALFERR S.p.A.**  
U.O. STRUTTURE  
Dot. Ing. **PIRELLA SOTTILE**  
Cedire degli Impieghi della Provincia di Roma n° 420783

IN. EMB. 31