
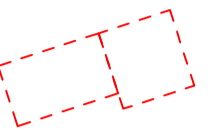




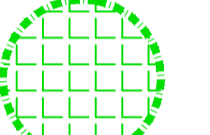

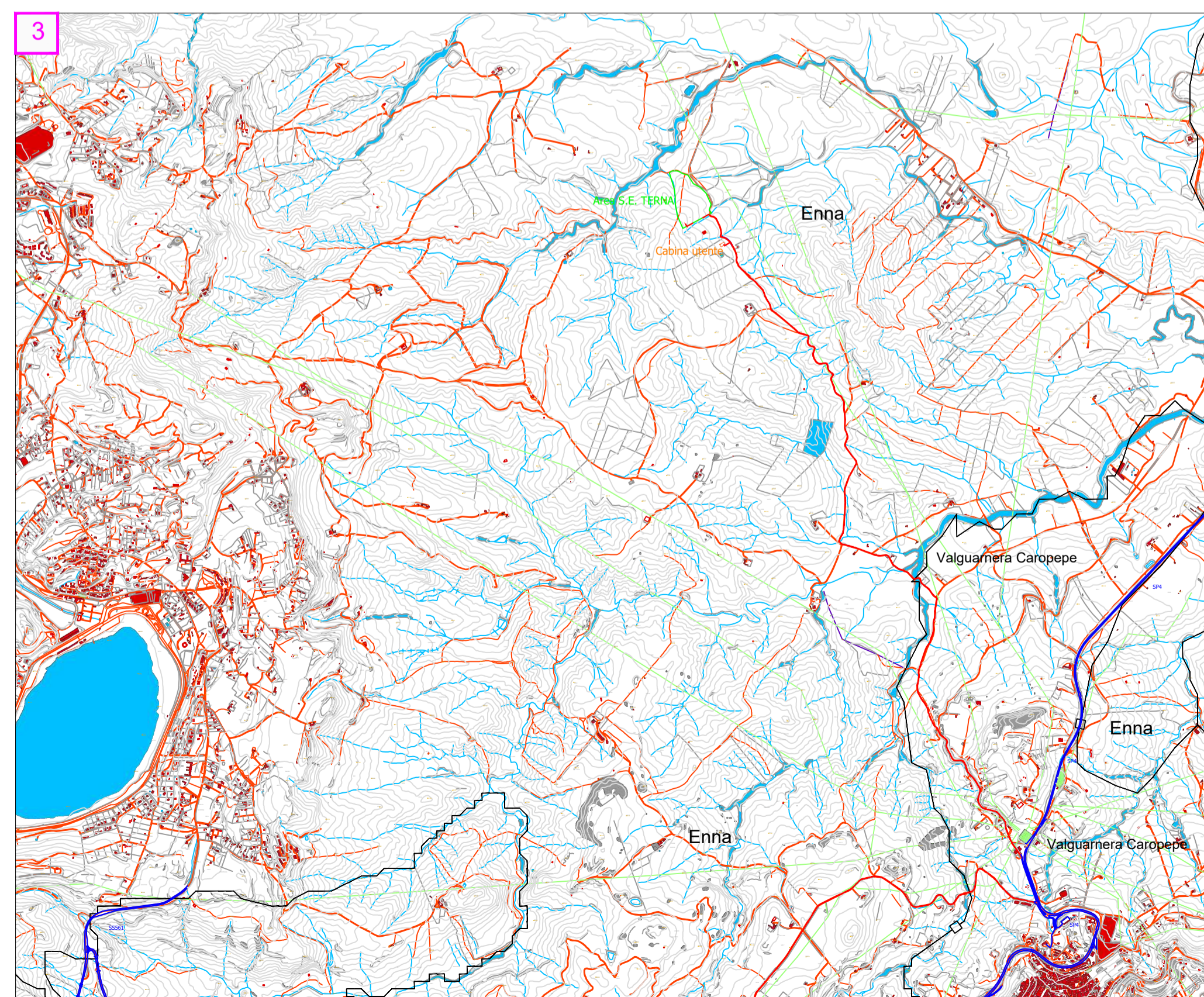
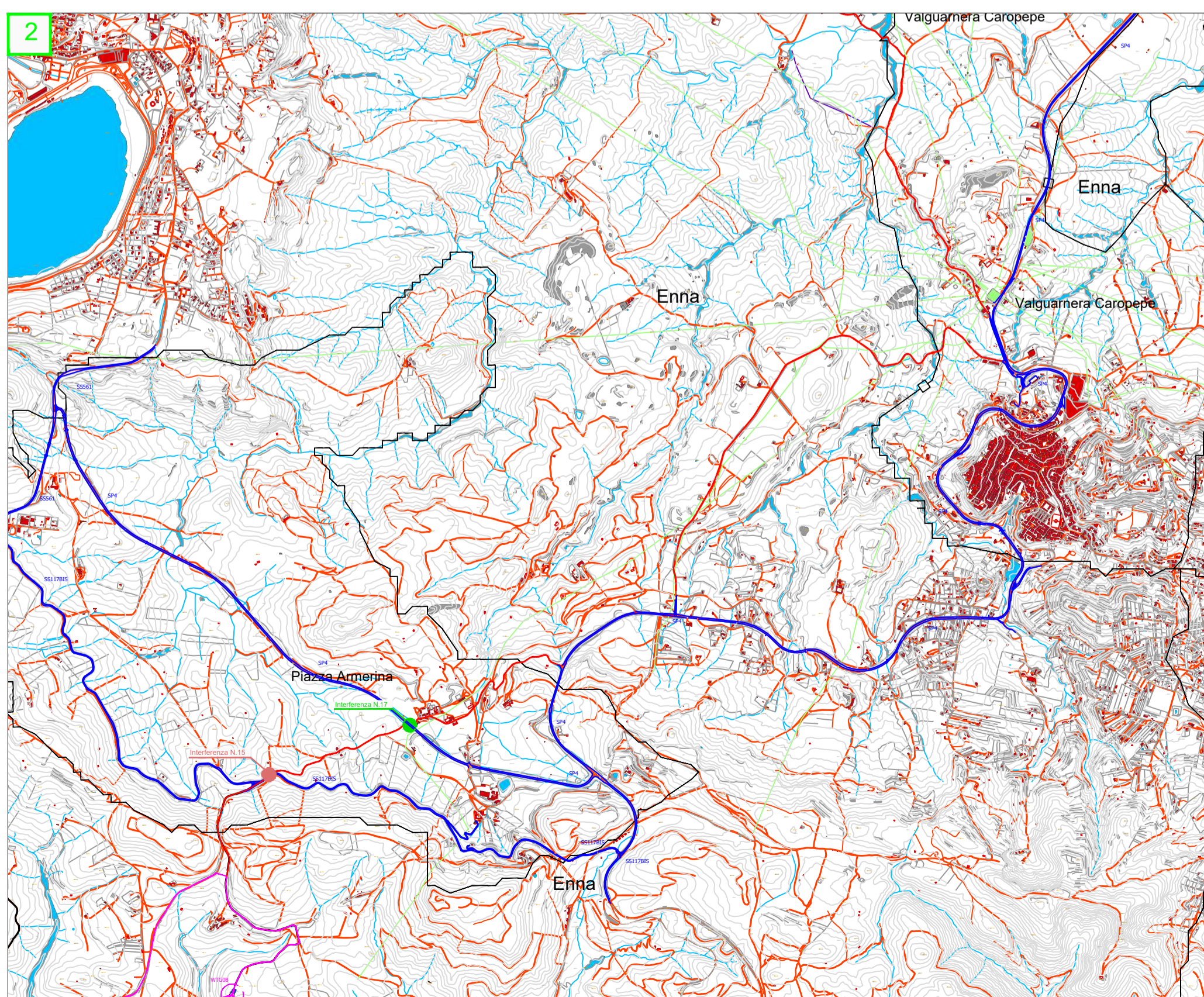
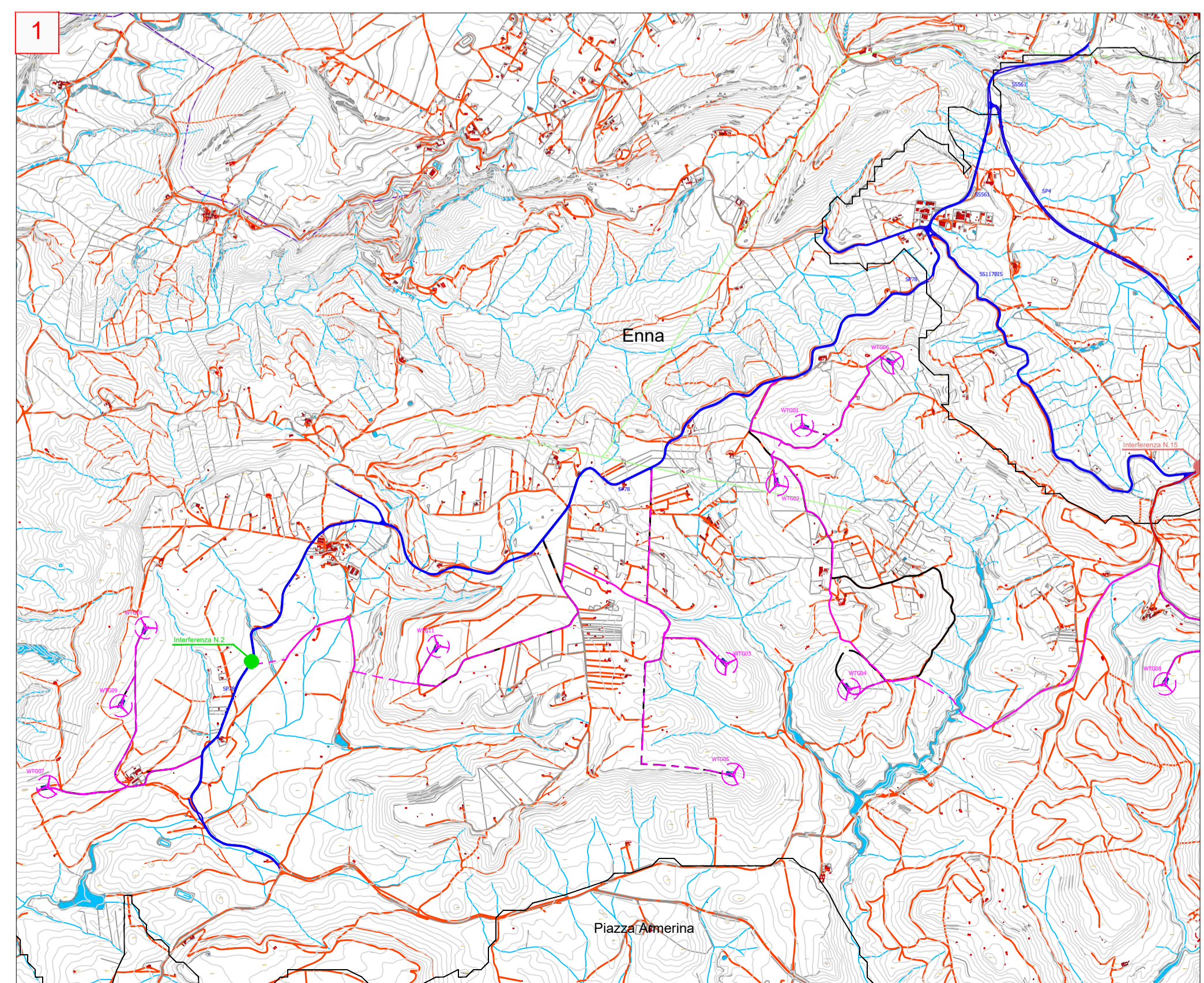
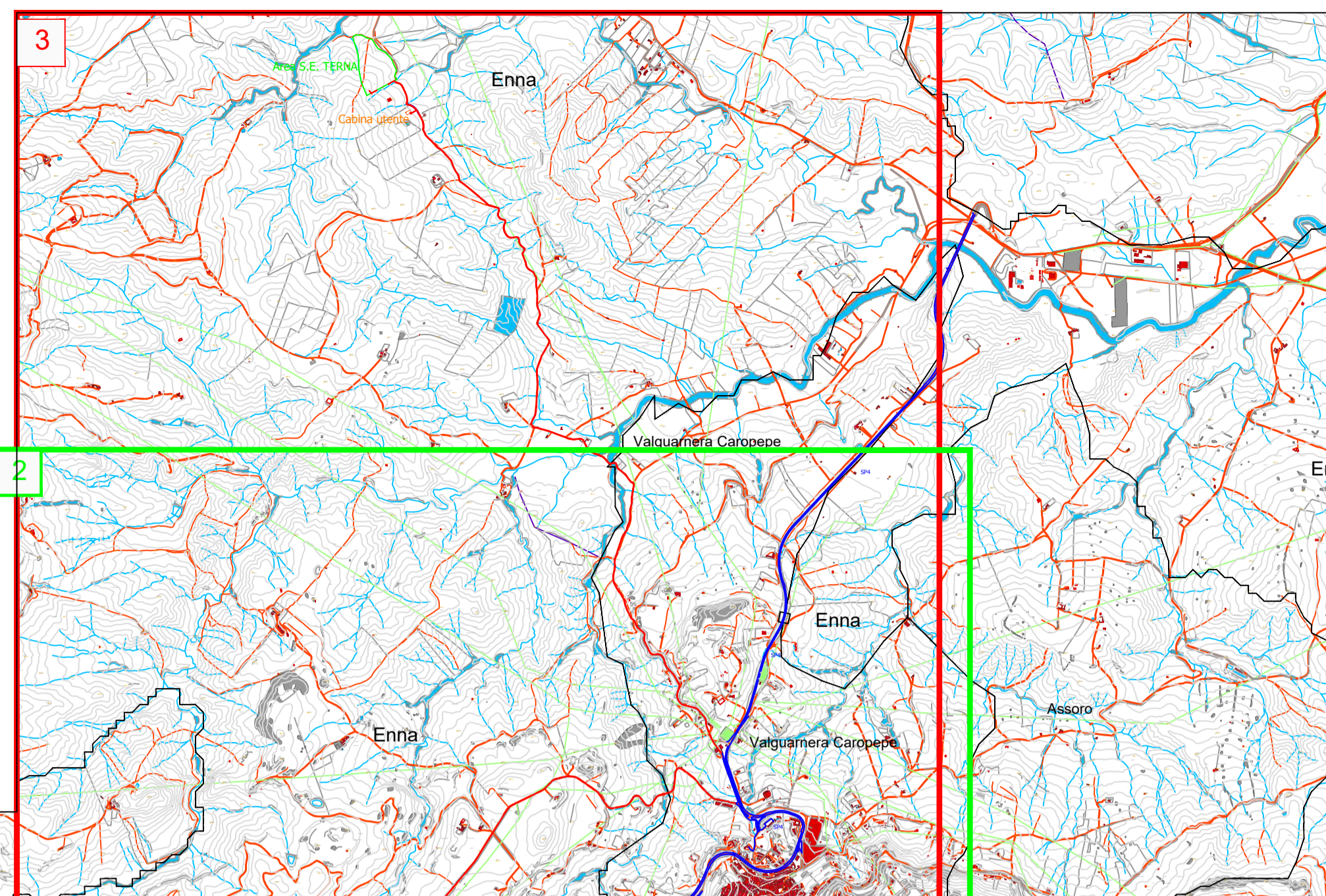
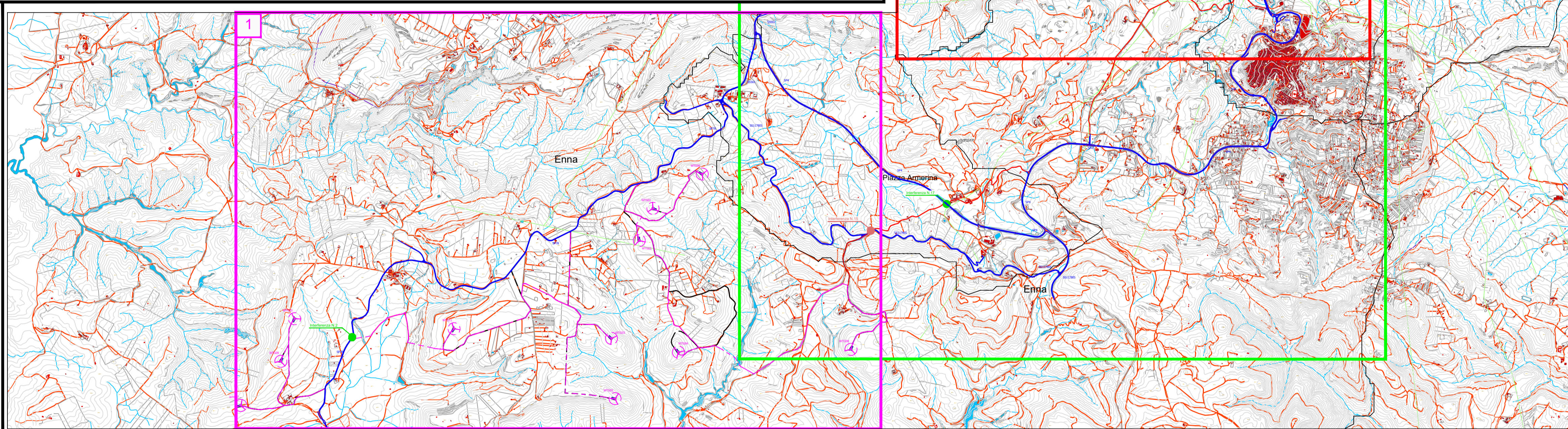
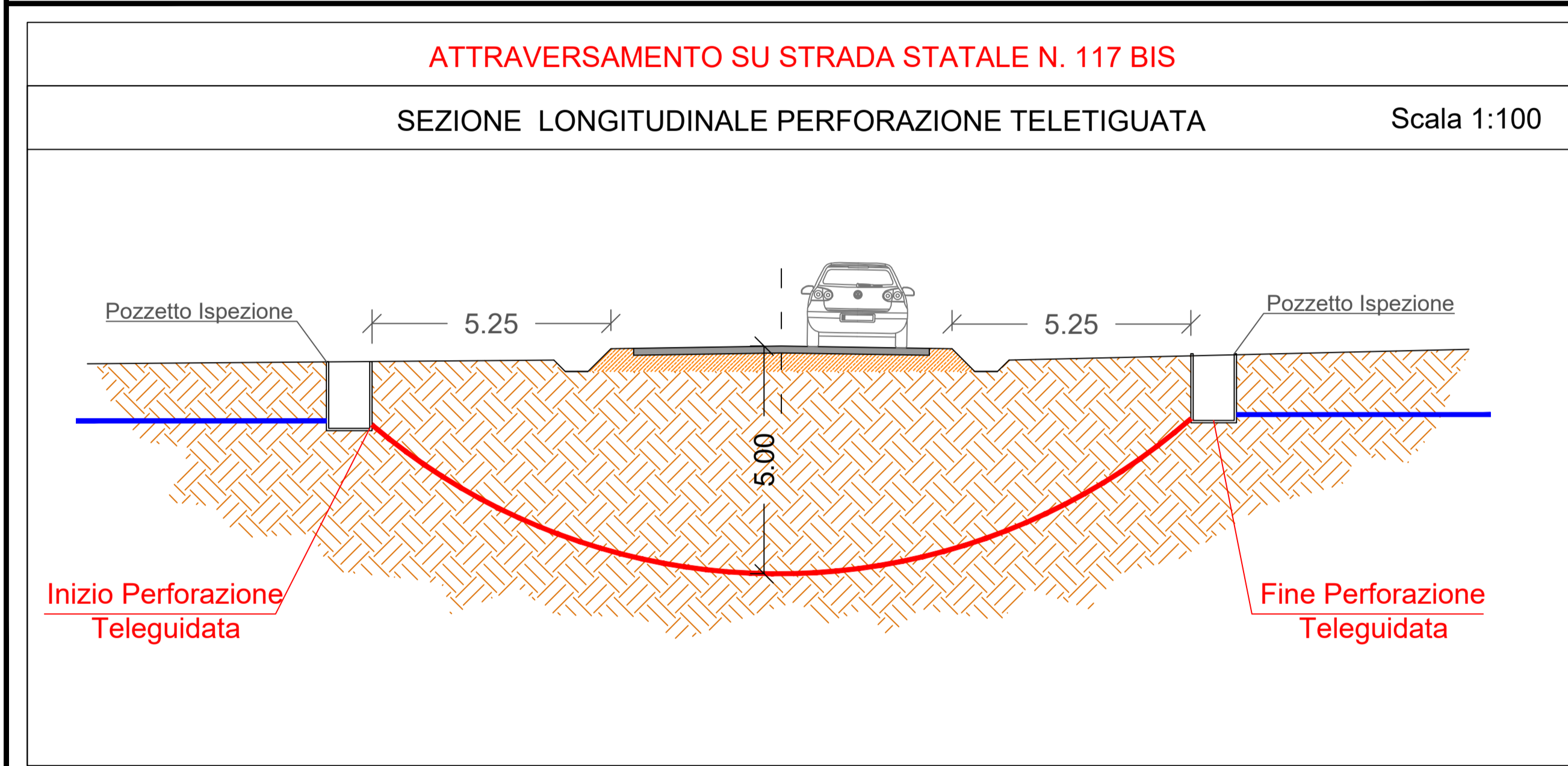
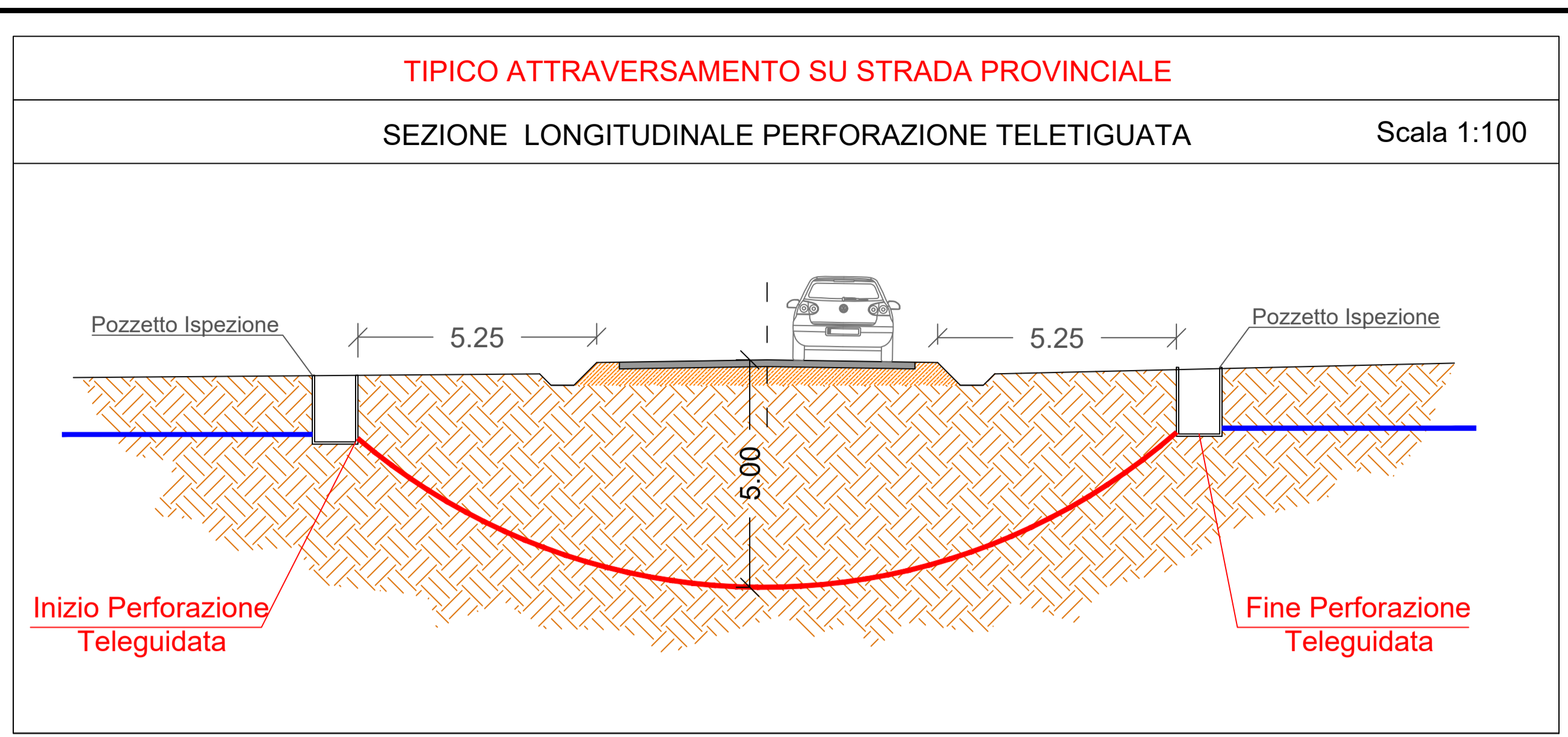
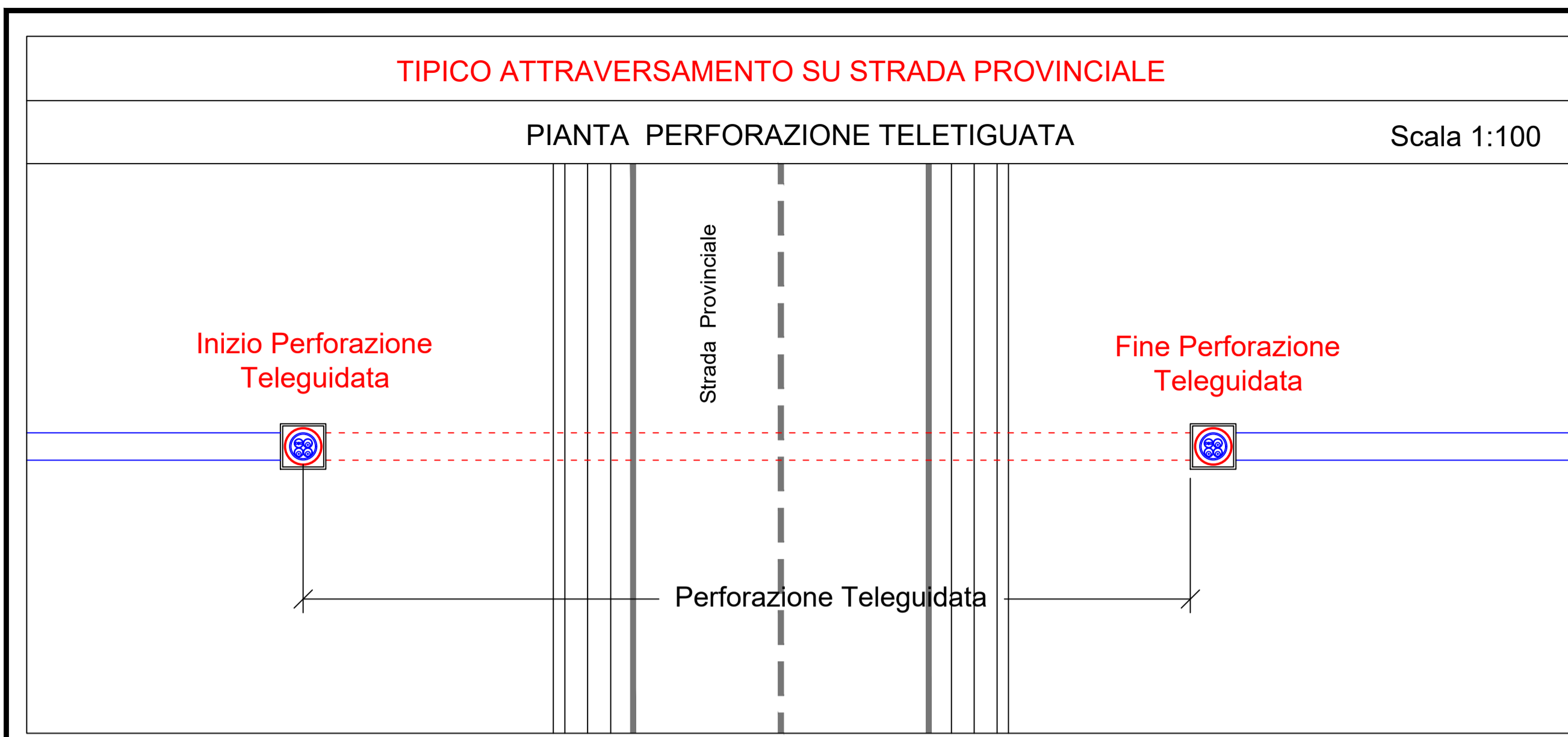




Legenda

-  Aerogeneratore
-  Visualizzazione Piazzola
-  Viabilità Esistente
-  Limite Comunale
-  Elettrodotto interrato
Interno al Parco Eolico
-  Elettrodotto interrato
Esterno al Parco Eolico
-  Attraversamento Strade Provinciali
-  Attraversamento Strade Statali



Committente: **Selva Wind Srl**
Via Sardegna, 40
00187 Roma
selvawindsrl@cert.studiopirola.com

Titolo del Progetto: **Parco Eolico Selva Wind sito nel Comune di Enna**

N° Documento: IT-VesSEL-BFP-CW-DW-005

Scala: Varie


Particolari tipologici di risoluzione interferenze cavidotto - Infrastrutture varie e Trasporti -

Progettista:

Tecnico
ing. Danilo POMONIO

Collaborazioni
ing. Milena MIGLIONICO
ing. Giulia CARELLA
ing. Tommaso MANCINI
ing. Fabio MASTROSERIO
ing. Martino LAPENNA
ing. Alessia NASCENTE
ing. Mariano MARSEGLIA
ing. Giuseppe Federico ZINGARELLI
ing. Dionisio STAFFIERI

Responsabile Commessa
ing. Danilo POMONIO



Ing. Daniele Basso, S.p.A.
Via Sardegna, 40
00187 Roma
www.bfp.it
Autore del Progetto e Direzione dei Lavori
UNI EN ISO 9001:2015
UNI EN ISO 14001:2015
UNI ISO 45001:2018

REV	DATA	DESCRIZIONE	DISEGNATO	CONTROLLATO	APPROVATO
00	30/01/2023	Emissione	Staffieri	Miglioni	Pomponio
01					
02					
03					
04					
05					