

Regione
Campania



Provincia di
Avellino



Comune di
Bisaccia



Comune di
Vallata



Committente:

RWE

RWE RENEWABLES ITALIA S.R.L.

via Andrea Doria, 41/G - 00192 Roma

P.IVA/C.F. 06400370968

PEC: rwerenewablesitaliasrl@legalmail.it

Titolo del Progetto:

REALIZZAZIONE DI UN IMPIANTO PER LA PRODUZIONE DI ENERGIA ELETTRICA DA FONTE EOLICA NEI COMUNI DI BISACCIA E VALLATA (AV)

Documento:

PROGETTO DEFINITIVO OPERE CIVILI

N° Documento:

R_41.1

ID PROGETTO:

PEBV

DISCIPLINA:

PD

TIPOLOGIA:

FORMATO:

Elaborato:

ZVI post intervento

FOGLIO:

1 di 1

SCALA:

N/D

Nome file:

Progettazione:



ENERGY & ENGINEERING S.R.L.

Via XXIII Luglio 139

83044 - Bisaccia (AV)

P.IVA 02618900647

Tel./Fax. 0827/81480

pec: energyengineering@legalmail.it

Progettista:



Ing. Davide G. Trivelli

Studio d'Impatto Ambientale:

Coordinamento: Giuseppe Iadarola, architetto

Consulenza geologia: dott. Fabio Mastantuono, Geologo

Consulenza archeologia: dott. Antonio Mesisca, archeologo

Consulenza rumore: dott. Emilio Barisano, chimico

Consulenza fauna e ambiente: Ianchem s.r.l.

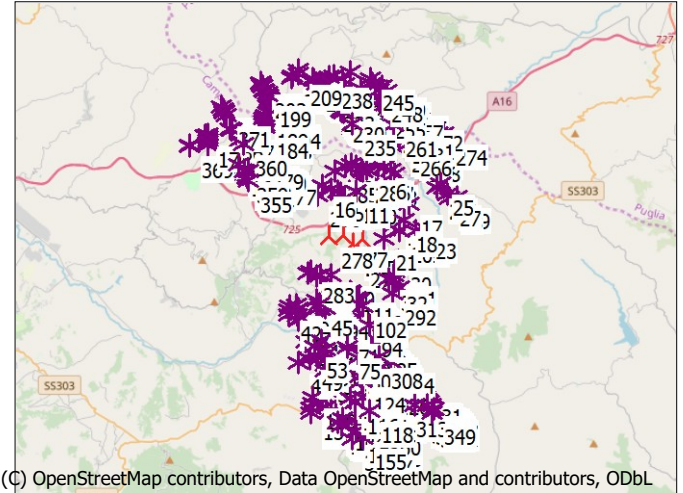
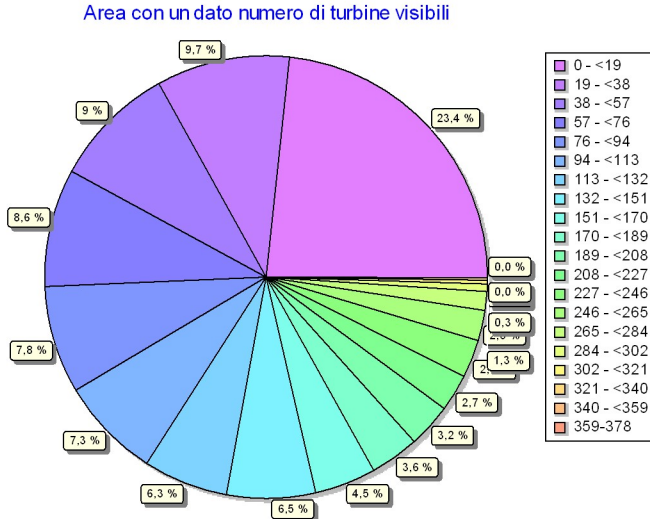
Carlo Alberto Iannace, chimico

Daniele Miranda, biologo



Rev:	Data Revisione	Descrizione Revisione	Redatto	Controllato	Approvato
0	22/08/2022	PRIMA EMISSIONE			

ZVI - Riepilogo ZVI standard



Scala 1:400.000
★ Nuova WTG ★ WTG preesistente

Assunzioni sul calcolo ZVI

- Centro del calcolo
 - Dimensione X dell'area di calcolo
 - Dimensione Y dell'area di calcolo
 - Risoluzione del calcolo
 - Altezza dell'osservatore
 - Area di calcolo
 - Punto più alto visibile della WTG
 - Ostacoli usati:
 - Oggetto DEM
 - Nessun Oggetto Aree usato nel calcolo
 - Nuove WTG utilizzate nel calcolo
 - WTG preesistenti usate nel calcolo
- UTM (north)-WGS84 Zone: 33 Est: 526.975 Nord: 4.544.461
- 20.000 m
20.000 m
25 m
1,5 m
40.000 ha
Altezza mozzo + 1/2 Diametro Rotore
0
Project Wizard Elevation Data Grid (SRTM: Shuttle DTM 1 arc-second)
- 5
373

Nessuna distanza massima dalla WTG

Risultati ZVI

WTG visibili	Area [ha]	Area [%]
0	5.776	14,4
1	379	0,9
2	236	0,6
3	220	0,6
4	174	0,4
5	210	0,5
6	145	0,4
7	142	0,4
8	163	0,4
9	177	0,4
10	173	0,4
11	166	0,4
12	158	0,4
13	177	0,4
14	186	0,5
15	208	0,5
16	194	0,5
17	261	0,7
18	218	0,5
19	190	0,5
20	213	0,5
21	194	0,5
22	174	0,4
23	187	0,5
24	195	0,5
24-378	29.682	74,2

WTG

Valida	Produttore	Tipo generatore	Potenza nominale [kW]	Diametro rotore [m]	Altezza mozzo [m]	Easting	Northing	Z [m]
1 No	VESTAS	V112-3.000	3.000	112,0	84,0	527.330	4.551.112	724,8
2 No	VESTAS	V112-3.000	3.000	112,0	84,0	526.952	4.548.908	607,4
3 No	VESTAS	V112-3.000	3.000	112,0	84,0	527.251	4.548.989	603,3
4 No	VESTAS	V112-3.000	3.000	112,0	84,0	527.565	4.548.871	599,0
5 No	VESTAS	V112-3.000	3.000	112,0	84,0	528.672	4.548.901	537,3
6 No	VESTAS	V112-3.000	3.000	112,0	84,0	528.992	4.548.827	543,6
7 No	VESTAS	V112-3.000	3.000	112,0	84,0	529.313	4.548.680	524,9
8 No	VESTAS	V112-3.000	3.000	112,0	84,0	529.576	4.548.488	494,3
9 No	VESTAS	V112-3.000	3.000	112,0	84,0	528.176	4.547.919	518,6
10 No	VESTAS	V112-3.000	3.000	112,0	84,0	527.966	4.547.487	502,2
11 No	VESTAS	V112-3.000	3.000	112,0	84,0	527.525	4.547.568	561,7
12 No	VESTAS	V112-3.000	3.000	112,0	84,0	527.148	4.547.573	586,1
13 No	VESTAS	V112-3.000	3.000	112,0	84,0	526.700	4.547.422	593,3
14 No	VESTAS	V112-3.000	3.000	112,0	84,0	526.547	4.547.570	601,8
15 No	VESTAS	V112-3.000	3.000	112,0	84,0	526.253	4.547.665	646,9
16 No	VESTAS	V112-3.000	3.000	112,0	84,0	525.774	4.547.816	693,4
17 No	VESTAS	V112-3.000	3.000	112,0	84,0	530.334	4.546.908	548,2
18 No	VESTAS	V112-3.000	3.000	112,0	84,0	530.095	4.546.043	648,6
19 No	VESTAS	V112-3.000	3.000	112,0	84,0	529.566	4.545.807	665,4
20 No	VESTAS	V112-3.000	3.000	112,0	84,0	529.833	4.545.507	686,6
21 No	VESTAS	V112-3.000	3.000	112,0	84,0	528.976	4.545.081	642,2
22 No	VESTAS	V112-3.000	3.000	112,0	84,0	530.701	4.545.490	590,1
23 No	VESTAS	V112-3.000	3.000	112,0	84,0	531.090	4.545.656	562,2
24 No	VESTAS	V112-3.000	3.000	112,0	84,0	531.822	4.547.750	506,9
25 No	VESTAS	V112-3.000	3.000	112,0	84,0	531.968	4.547.983	496,5
26 No	VESTAS	V112-3.000	3.000	112,0	84,0	532.174	4.547.776	539,3
27 No	VESTAS	V112-3.000	3.000	112,0	84,0	532.362	4.547.429	527,8

continua alla pagina successiva...

ZVI - Riepilogo ZVI standard

...continua dalla pagina precedente

Valida	Produttore	Tipo generatore	Potenza nominale [kW]	Diametro rotore [m]	Altezza mozzo [m]	Easting	Northing	Z [m]
28 No	VESTAS	V112-3.000	3.000	112,0	84,0	532.449	4.547.210	551,4
29 No	VESTAS	V112-3.000	3.000	112,0	84,0	532.835	4.547.279	600,4
30 No	VESTAS	V112-3.000	3.000	112,0	84,0	529.777	4.543.870	724,1
31 No	VESTAS	V112-3.000	3.000	112,0	84,0	529.590	4.543.384	724,0
32 No	VESTAS	V112-3.000	3.000	112,0	84,0	529.601	4.542.885	767,2
33 No	VESTAS	V112-3.000	3.000	112,0	84,0	529.329	4.542.956	743,1
34 No	VESTAS	V112-3.000	3.000	112,0	84,0	529.813	4.542.490	798,8
35 No	VESTAS	V112-3.000	3.000	112,0	84,0	524.520	4.540.745	742,3
36 No	VESTAS	V112-3.000	3.000	112,0	84,0	524.668	4.540.962	770,6
37 No	VESTAS	V112-3.000	3.000	112,0	84,0	524.445	4.540.989	735,5
38 No	VESTAS	V112-3.000	3.000	112,0	84,0	524.488	4.541.352	765,3
39 No	VESTAS	V112-3.000	3.000	112,0	84,0	524.422	4.541.565	737,1
40 No	VESTAS	V112-3.000	3.000	112,0	84,0	524.325	4.541.199	766,3
41 No	VESTAS	V112-3.000	3.000	112,0	84,0	524.018	4.541.056	721,8
42 No	VESTAS	V112-3.000	3.000	112,0	84,0	524.016	4.541.282	715,6
43 No	VESTAS	V112-3.000	3.000	112,0	84,0	524.026	4.541.507	695,5
44 No	VESTAS	V112-3.000	3.000	112,0	84,0	525.437	4.541.787	769,1
45 No	VESTAS	V112-3.000	3.000	112,0	84,0	525.590	4.541.633	781,9
46 No	VESTAS	V112-3.000	3.000	112,0	84,0	525.764	4.541.507	803,7
47 No	VESTAS	V112-3.000	3.000	112,0	84,0	525.414	4.540.393	803,2
48 No	VESTAS	V112-3.000	3.000	112,0	84,0	524.544	4.538.534	766,9
49 No	VESTAS	V112-3.000	3.000	112,0	84,0	525.099	4.538.711	840,5
50 No	VESTAS	V112-3.000	3.000	112,0	84,0	525.209	4.539.015	844,3
51 No	VESTAS	V112-3.000	3.000	112,0	84,0	525.089	4.539.425	805,1
52 No	VESTAS	V112-3.000	3.000	112,0	84,0	524.940	4.539.621	776,1
53 No	VESTAS	V112-3.000	3.000	112,0	84,0	525.382	4.539.365	842,4
54 No	VESTAS	V112-3.000	3.000	112,0	84,0	525.649	4.539.208	877,6
55 No	VESTAS	V112-3.000	3.000	112,0	84,0	525.517	4.538.839	869,2
56 No	VESTAS	V112-3.000	3.000	112,0	84,0	525.897	4.538.117	876,0
57 No	VESTAS	V112-3.000	3.000	112,0	84,0	525.899	4.538.401	874,7
58 No	VESTAS	V112-3.000	3.000	112,0	84,0	526.240	4.538.518	890,8
59 No	VESTAS	V112-3.000	3.000	112,0	84,0	526.481	4.538.474	898,8
60 No	VESTAS	V112-3.000	3.000	112,0	84,0	526.014	4.538.682	886,4
61 No	VESTAS	V112-3.000	3.000	112,0	84,0	525.939	4.538.979	892,1
62 No	VESTAS	V112-3.000	3.000	112,0	84,0	525.916	4.539.216	892,0
63 No	VESTAS	V112-3.000	3.000	112,0	84,0	525.828	4.539.485	880,6
64 No	VESTAS	V112-3.000	3.000	112,0	84,0	525.712	4.539.693	842,2
65 No	VESTAS	V112-3.000	3.000	112,0	84,0	526.184	4.539.727	846,7
66 No	VESTAS	V112-3.000	3.000	112,0	84,0	526.370	4.539.552	867,2
67 No	VESTAS	V112-3.000	3.000	112,0	84,0	526.346	4.539.078	880,5
68 No	VESTAS	V112-3.000	3.000	112,0	84,0	526.629	4.538.820	904,3
69 No	VESTAS	V112-3.000	3.000	112,0	84,0	526.804	4.538.379	924,0
70 No	VESTAS	V112-3.000	3.000	112,0	84,0	526.945	4.538.071	931,5
71 No	VESTAS	V47-660/200	660	47,0	50,0	527.054	4.540.094	877,8
72 No	VESTAS	V112-3.000	3.000	112,0	84,0	527.358	4.540.089	857,7
73 No	VESTAS	V47-660/200	660	47,0	50,0	527.001	4.539.628	887,7
74 No	VESTAS	V47-660/200	660	47,0	50,0	527.056	4.539.488	903,5
75 No	VESTAS	V47-660/200	660	47,0	50,0	527.101	4.539.358	912,2
76 No	VESTAS	V47-660/200	660	47,0	50,0	527.152	4.539.231	923,5
77 No	VESTAS	V47-660/200	660	47,0	50,0	527.196	4.539.136	931,6
78 No	VESTAS	V47-660/200	660	47,0	50,0	527.243	4.539.001	943,7
79 No	VESTAS	V47-660/200	660	47,0	50,0	527.299	4.538.849	955,1
80 No	VESTAS	V112-3.000	3.000	112,0	84,0	527.647	4.538.752	933,2
81 No	VESTAS	V112-3.000	3.000	112,0	84,0	527.042	4.538.413	951,5
82 No	VESTAS	V112-3.000	3.000	112,0	84,0	527.174	4.538.249	956,9
83 No	VESTAS	V112-3.000	3.000	112,0	84,0	527.794	4.538.329	938,0
84 No	VESTAS	V112-3.000	3.000	112,0	84,0	527.992	4.538.588	903,3
85 No	VESTAS	V47-660/200	660	47,0	50,0	529.024	4.539.396	884,0
86 No	VESTAS	V47-660/200	660	47,0	50,0	528.873	4.539.514	892,6
87 No	VESTAS	V47-660/200	660	47,0	50,0	528.664	4.539.604	893,4
88 No	VESTAS	V47-660/200	660	47,0	50,0	528.612	4.539.725	892,0
89 No	VESTAS	V47-660/200	660	47,0	50,0	528.522	4.539.821	886,5
90 No	VESTAS	V47-660/200	660	47,0	50,0	528.394	4.539.891	877,2
91 No	VESTAS	V47-660/200	660	47,0	50,0	528.353	4.540.135	853,3
92 No	VESTAS	V47-660/200	660	47,0	50,0	528.255	4.540.222	845,9
93 No	VESTAS	V47-660/200	660	47,0	50,0	528.250	4.540.408	845,9
94 No	VESTAS	V47-660/200	660	47,0	50,0	528.252	4.540.520	853,4
95 No	VESTAS	V47-660/200	660	47,0	50,0	528.205	4.540.684	874,9
96 No	VESTAS	V47-660/200	660	47,0	50,0	528.180	4.540.762	875,8
97 No	VESTAS	V47-660/200	660	47,0	50,0	528.127	4.540.913	876,9

continua alla pagina successiva...

ZVI - Riepilogo ZVI standard

...continua dalla pagina precedente

Valida	Produttore	Tipo generatore	Potenza nominale [kW]	Diametro rotore [m]	Altezza mozzo [m]	Easting	Northing	Z [m]
98 No	VESTAS	V47-660/200	660	47,0	50,0	528.045	4.541.013	867,3
99 No	VESTAS	V47-660/200	660	47,0	50,0	527.993	4.541.108	858,8
100 No	VESTAS	V47-660/200	660	47,0	50,0	527.981	4.541.228	843,2
101 No	VESTAS	V47-660/200	660	47,0	50,0	527.992	4.541.407	843,7
102 No	VESTAS	V47-660/200	660	47,0	50,0	527.923	4.541.524	844,0
103 No	VESTAS	V47-660/200	660	47,0	50,0	527.857	4.541.615	845,9
104 No	VESTAS	V47-660/200	660	47,0	50,0	527.785	4.541.708	840,0
105 No	VESTAS	V47-660/200	660	47,0	50,0	527.673	4.541.806	828,8
106 No	VESTAS	V47-660/200	660	47,0	50,0	527.625	4.541.865	828,1
107 No	VESTAS	V47-660/200	660	47,0	50,0	527.551	4.541.929	829,9
108 No	VESTAS	V47-660/200	660	47,0	50,0	527.445	4.542.007	823,0
109 No	VESTAS	V47-660/200	660	47,0	50,0	527.363	4.542.108	826,2
110 No	VESTAS	V47-660/200	660	47,0	50,0	527.297	4.542.202	827,9
111 No	VESTAS	V47-660/200	660	47,0	50,0	527.197	4.542.289	815,7
112 No	VESTAS	V112-3.000	3.000	112,0	84,0	527.020	4.537.278	887,4
113 No	VESTAS	V112-3.000	3.000	112,0	84,0	526.967	4.537.059	887,1
114 No	VESTAS	V112-3.000	3.000	112,0	84,0	527.043	4.536.839	878,9
115 No	VESTAS	V112-3.000	3.000	112,0	84,0	527.228	4.536.630	871,1
116 No	VESTAS	V112-3.000	3.000	112,0	84,0	527.512	4.536.452	861,0
117 No	VESTAS	V112-3.000	3.000	112,0	84,0	527.845	4.536.125	854,4
118 No	VESTAS	V112-3.000	3.000	112,0	84,0	528.292	4.536.021	854,7
119 No	VESTAS	V112-3.000	3.000	112,0	84,0	528.488	4.535.853	839,2
120 No	VESTAS	V112-3.000	3.000	112,0	84,0	527.912	4.536.672	853,3
121 No	VESTAS	V112-3.000	3.000	112,0	84,0	527.898	4.537.032	878,4
122 No	VESTAS	V112-3.000	3.000	112,0	84,0	527.373	4.537.287	889,4
123 No	VESTAS	V112-3.000	3.000	112,0	84,0	527.922	4.537.316	898,2
124 No	VESTAS	V112-3.000	3.000	112,0	84,0	527.895	4.537.572	918,6
125 No	VESTAS	V112-3.000	3.000	112,0	84,0	527.749	4.537.767	927,1
126 No	VESTAS	V112-3.000	3.000	112,0	84,0	529.154	4.537.459	834,1
127 No	VESTAS	V112-3.000	3.000	112,0	84,0	529.654	4.536.879	821,1
128 No	VESTAS	V112-3.000	3.000	112,0	84,0	528.904	4.536.178	846,2
129 No	VESTAS	V112-3.000	3.000	112,0	84,0	530.416	4.536.656	843,5
130 No	VESTAS	V112-3.000	3.000	112,0	84,0	530.642	4.536.304	830,7
131 No	VESTAS	V47-660/200	660	47,0	50,0	531.076	4.536.787	844,9
132 No	VESTAS	V47-660/200	660	47,0	50,0	531.211	4.536.706	845,6
133 No	VESTAS	V47-660/200	660	47,0	50,0	531.352	4.536.553	838,8
134 No	VESTAS	V47-660/200	660	47,0	50,0	531.441	4.536.474	831,9
135 No	VESTAS	V47-660/200	660	47,0	50,0	531.349	4.536.050	839,0
136 No	VESTAS	V112-3.000	3.000	112,0	84,0	525.193	4.535.869	844,9
137 No	VESTAS	V112-3.000	3.000	112,0	84,0	525.171	4.536.105	861,7
138 No	VESTAS	V112-3.000	3.000	112,0	84,0	525.267	4.536.379	857,4
139 No	VESTAS	V112-3.000	3.000	112,0	84,0	525.271	4.536.661	853,8
140 No	VESTAS	V112-3.000	3.000	112,0	84,0	525.735	4.536.546	831,6
141 No	VESTAS	V112-3.000	3.000	112,0	84,0	526.003	4.536.158	841,1
142 No	VESTAS	V112-3.000	3.000	112,0	84,0	526.284	4.535.970	861,2
143 No	VESTAS	V112-3.000	3.000	112,0	84,0	526.479	4.535.743	882,9
144 No	VESTAS	V112-3.000	3.000	112,0	84,0	526.843	4.535.600	860,9
145 No	VESTAS	V112-3.000	3.000	112,0	84,0	527.203	4.535.593	846,6
146 No	VESTAS	V112-3.000	3.000	112,0	84,0	526.467	4.535.554	885,3
147 No	VESTAS	V112-3.000	3.000	112,0	84,0	526.538	4.535.461	882,9
148 No	VESTAS	V112-3.000	3.000	112,0	84,0	526.597	4.535.373	881,4
149 No	VESTAS	V112-3.000	3.000	112,0	84,0	526.680	4.535.270	874,4
150 No	VESTAS	V112-3.000	3.000	112,0	84,0	526.768	4.535.176	861,1
151 No	VESTAS	V112-3.000	3.000	112,0	84,0	527.522	4.535.488	840,7
152 No	VESTAS	V112-3.000	3.000	112,0	84,0	527.506	4.535.126	845,0
153 No	VESTAS	V112-3.000	3.000	112,0	84,0	527.592	4.534.892	853,0
154 No	VESTAS	V112-3.000	3.000	112,0	84,0	527.770	4.534.732	862,3
155 No	VESTAS	V112-3.000	3.000	112,0	84,0	527.952	4.534.580	868,3
156 No	VESTAS	V112-3.000	3.000	112,0	84,0	528.225	4.535.185	840,2
157 No	VESTAS	V112-3.000	3.000	112,0	84,0	528.388	4.534.681	868,5
158 No	VESTAS	V112-3.000	3.000	112,0	84,0	528.776	4.534.729	845,4
159 No	VESTAS	V112-3.000	3.000	112,0	84,0	528.735	4.535.101	845,5
160 No	VESTAS	V112-3.000	3.000	112,0	84,0	528.699	4.535.306	841,0
161 No	VESTAS	V112-3.000	3.000	112,0	84,0	521.946	4.548.418	706,0
162 No	VESTAS	V112-3.000	3.000	112,0	84,0	521.817	4.548.602	737,5
163 No	VESTAS	V112-3.000	3.000	112,0	84,0	521.639	4.548.787	756,8
164 No	VESTAS	V112-3.000	3.000	112,0	84,0	521.318	4.548.994	791,7
165 No	VESTAS	V112-3.000	3.000	112,0	84,0	521.616	4.549.089	791,3
166 No	VESTAS	V112-3.000	3.000	112,0	84,0	521.190	4.549.175	788,7
167 No	VESTAS	V112-3.000	3.000	112,0	84,0	521.617	4.549.328	812,9

continua alla pagina successiva...

ZVI - Riepilogo ZVI standard

... continua dalla pagina precedente

Valida	Produttore	Tipo generatore	Potenza nominale [kW]	Diametro rotore [m]	Altezza mozzo [m]	Easting	Northing	Z [m]	
168	No	VESTAS	V112-3.000	3.000	112,0	84,0	521.394	4.549.512	823,7
169	No	VESTAS	V112-3.000	3.000	112,0	84,0	521.679	4.549.622	801,3
170	No	VESTAS	V112-3.000	3.000	112,0	84,0	521.587	4.549.815	810,1
171	No	VESTAS	V112-3.000	3.000	112,0	84,0	519.713	4.549.948	712,3
172	No	VESTAS	V112-3.000	3.000	112,0	84,0	519.724	4.550.100	736,7
173	No	VESTAS	V112-3.000	3.000	112,0	84,0	519.711	4.550.239	749,8
174	No	VESTAS	V112-3.000	3.000	112,0	84,0	519.696	4.550.340	758,2
175	No	VESTAS	V112-3.000	3.000	112,0	84,0	519.535	4.550.440	757,4
176	No	VESTAS	V112-3.000	3.000	112,0	84,0	519.610	4.550.473	778,2
177	No	VESTAS	V112-3.000	3.000	112,0	84,0	519.685	4.550.544	791,5
178	No	VESTAS	V112-3.000	3.000	112,0	84,0	522.181	4.549.453	760,5
179	No	VESTAS	V112-3.000	3.000	112,0	84,0	522.410	4.549.322	738,2
180	No	VESTAS	V112-3.000	3.000	112,0	84,0	522.558	4.549.212	723,8
181	No	VESTAS	V112-3.000	3.000	112,0	84,0	522.676	4.549.096	709,1
182	No	VESTAS	V112-3.000	3.000	112,0	84,0	522.814	4.548.972	693,0
183	No	VESTAS	V112-3.000	3.000	112,0	84,0	522.848	4.550.874	863,8
184	No	VESTAS	V112-3.000	3.000	112,0	84,0	522.723	4.550.950	864,9
185	No	VESTAS	V112-3.000	3.000	112,0	84,0	522.677	4.551.027	864,2
186	No	VESTAS	V112-3.000	3.000	112,0	84,0	522.637	4.551.121	864,8
187	No	VESTAS	V112-3.000	3.000	112,0	84,0	522.630	4.551.218	867,7
188	No	VESTAS	V112-3.000	3.000	112,0	84,0	522.665	4.551.370	862,3
189	No	VESTAS	V112-3.000	3.000	112,0	84,0	522.709	4.551.475	868,1
190	No	VESTAS	V112-3.000	3.000	112,0	84,0	522.740	4.551.567	874,5
191	No	VESTAS	V112-3.000	3.000	112,0	84,0	522.792	4.551.670	886,1
192	No	VESTAS	V112-3.000	3.000	112,0	84,0	523.248	4.551.613	874,4
193	No	VESTAS	V112-3.000	3.000	112,0	84,0	523.287	4.551.531	866,6
194	No	VESTAS	V112-3.000	3.000	112,0	84,0	523.322	4.551.452	861,3
195	No	VESTAS	V112-3.000	3.000	112,0	84,0	522.969	4.552.267	934,8
196	No	VESTAS	V112-3.000	3.000	112,0	84,0	522.923	4.552.352	937,0
197	No	VESTAS	V112-3.000	3.000	112,0	84,0	522.913	4.552.451	942,1
198	No	VESTAS	V112-3.000	3.000	112,0	84,0	522.891	4.552.533	942,9
199	No	VESTAS	V112-3.000	3.000	112,0	84,0	522.791	4.552.607	942,7
200	No	VESTAS	V112-3.000	3.000	112,0	84,0	522.778	4.552.710	937,7
201	No	VESTAS	V112-3.000	3.000	112,0	84,0	522.700	4.552.840	929,0
202	No	VESTAS	V112-3.000	3.000	112,0	84,0	522.637	4.552.907	935,1
203	No	VESTAS	V112-3.000	3.000	112,0	84,0	522.568	4.553.029	958,2
204	No	VESTAS	V112-3.000	3.000	112,0	84,0	522.496	4.553.096	972,7
205	No	VESTAS	V112-3.000	3.000	112,0	84,0	522.464	4.553.206	983,8
206	No	VESTAS	V112-3.000	3.000	112,0	84,0	522.467	4.553.315	980,3
207	No	VESTAS	V112-3.000	3.000	112,0	84,0	524.072	4.553.538	902,1
208	No	VESTAS	V112-3.000	3.000	112,0	84,0	524.111	4.553.627	907,5
209	No	VESTAS	V112-3.000	3.000	112,0	84,0	524.467	4.553.765	900,9
210	No	VESTAS	V112-3.000	3.000	112,0	84,0	524.495	4.553.918	882,9
211	No	VESTAS	V112-3.000	3.000	112,0	84,0	525.224	4.553.461	904,7
212	No	VESTAS	V112-3.000	3.000	112,0	84,0	525.303	4.553.399	896,6
213	No	VESTAS	V112-3.000	3.000	112,0	84,0	525.319	4.553.297	892,0
214	No	VESTAS	V112-3.000	3.000	112,0	84,0	525.376	4.553.246	888,5
215	No	VESTAS	V112-3.000	3.000	112,0	84,0	525.486	4.553.170	875,8
216	No	VESTAS	V112-3.000	3.000	112,0	84,0	525.557	4.553.092	880,1
217	No	VESTAS	V112-3.000	3.000	112,0	84,0	525.778	4.553.074	866,3
218	No	VESTAS	V112-3.000	3.000	112,0	84,0	525.948	4.552.988	845,5
219	No	VESTAS	V112-3.000	3.000	112,0	84,0	526.090	4.552.776	829,7
220	No	VESTAS	V112-3.000	3.000	112,0	84,0	526.119	4.552.683	827,2
221	No	VESTAS	V112-3.000	3.000	112,0	84,0	526.134	4.552.584	827,1
222	No	VESTAS	V112-3.000	3.000	112,0	84,0	526.151	4.552.482	829,4
223	No	VESTAS	V112-3.000	3.000	112,0	84,0	526.200	4.552.400	824,1
224	No	VESTAS	V112-3.000	3.000	112,0	84,0	526.267	4.552.326	818,7
225	No	VESTAS	V112-3.000	3.000	112,0	84,0	526.263	4.552.223	816,8
226	No	VESTAS	V112-3.000	3.000	112,0	84,0	526.382	4.552.101	808,5
227	No	VESTAS	V112-3.000	3.000	112,0	84,0	526.442	4.552.017	817,3
228	No	VESTAS	V112-3.000	3.000	112,0	84,0	526.500	4.551.937	817,4
229	No	VESTAS	V112-3.000	3.000	112,0	84,0	526.578	4.551.870	821,2
230	No	VESTAS	V112-3.000	3.000	112,0	84,0	526.643	4.551.828	819,0
231	No	VESTAS	V112-3.000	3.000	112,0	84,0	526.740	4.551.759	809,6
232	No	VESTAS	V112-3.000	3.000	112,0	84,0	526.817	4.551.705	802,5
233	No	VESTAS	V112-3.000	3.000	112,0	84,0	527.220	4.551.450	750,0
234	No	VESTAS	V112-3.000	3.000	112,0	84,0	527.272	4.551.362	749,5
235	No	VESTAS	V112-3.000	3.000	112,0	84,0	527.330	4.551.112	724,8
236	No	VESTAS	V112-3.000	3.000	112,0	84,0	527.331	4.550.991	716,1
237	No	VESTAS	V112-3.000	3.000	112,0	84,0	527.294	4.550.848	717,1

continua alla pagina successiva...

ZVI - Riepilogo ZVI standard

... continua dalla pagina precedente

Valida	Produttore	Tipo generatore	Potenza nominale [kW]	Diametro rotore [m]	Altezza mozzo [m]	Easting	Northing	Z [m]
238 No	VESTAS	V112-3.000	3.000	112,0	84,0	526.101	4.553.594	775,7
239 No	VESTAS	V112-3.000	3.000	112,0	84,0	526.335	4.553.656	759,5
240 No	VESTAS	V112-3.000	3.000	112,0	84,0	526.432	4.553.206	773,4
241 No	VESTAS	V112-3.000	3.000	112,0	84,0	526.887	4.553.197	735,7
242 No	VESTAS	V112-3.000	3.000	112,0	84,0	526.805	4.553.412	733,9
243 No	VESTAS	V112-3.000	3.000	112,0	84,0	527.209	4.553.816	652,7
244 No	VESTAS	V112-3.000	3.000	112,0	84,0	527.747	4.552.934	642,9
245 No	VESTAS	V112-3.000	3.000	112,0	84,0	528.253	4.553.503	594,8
246 No	VESTAS	V112-3.000	3.000	112,0	84,0	528.421	4.553.258	599,1
247 No	VESTAS	V112-3.000	3.000	112,0	84,0	528.534	4.553.059	600,0
248 No	VESTAS	V112-3.000	3.000	112,0	84,0	528.717	4.552.930	596,2
249 No	VESTAS	V112-3.000	3.000	112,0	84,0	528.881	4.553.066	587,5
250 No	VESTAS	V112-3.000	3.000	112,0	84,0	528.860	4.552.687	598,5
251 No	VESTAS	V112-3.000	3.000	112,0	84,0	529.153	4.552.842	589,7
252 No	VESTAS	V112-3.000	3.000	112,0	84,0	529.038	4.552.431	608,6
253 No	VESTAS	V112-3.000	3.000	112,0	84,0	528.727	4.552.338	614,6
254 No	VESTAS	V112-3.000	3.000	112,0	84,0	529.126	4.552.217	602,6
255 No	VESTAS	V112-3.000	3.000	112,0	84,0	528.858	4.552.054	606,4
256 No	VESTAS	V112-3.000	3.000	112,0	84,0	530.047	4.552.124	599,0
257 No	VESTAS	V112-3.000	3.000	112,0	84,0	529.770	4.551.931	602,8
258 No	VESTAS	V112-3.000	3.000	112,0	84,0	529.607	4.551.670	599,5
259 No	VESTAS	V112-3.000	3.000	112,0	84,0	529.350	4.551.431	606,4
260 No	VESTAS	V112-3.000	3.000	112,0	84,0	529.313	4.551.222	605,7
261 No	VESTAS	V112-3.000	3.000	112,0	84,0	529.489	4.551.088	596,6
262 No	VESTAS	V112-3.000	3.000	112,0	84,0	529.846	4.551.041	564,9
263 No	VESTAS	V112-3.000	3.000	112,0	84,0	529.866	4.550.742	564,9
264 No	VESTAS	V112-3.000	3.000	112,0	84,0	529.800	4.550.278	566,0
265 No	VESTAS	V112-3.000	3.000	112,0	84,0	530.017	4.550.175	559,8
266 No	VESTAS	V112-3.000	3.000	112,0	84,0	530.225	4.550.060	557,4
267 No	VESTAS	V112-3.000	3.000	112,0	84,0	530.428	4.549.949	550,4
268 No	VESTAS	V112-3.000	3.000	112,0	84,0	530.690	4.549.775	543,3
269 No	VESTAS	V112-3.000	3.000	112,0	84,0	530.802	4.550.128	534,6
270 No	VESTAS	V112-3.000	3.000	112,0	84,0	530.603	4.550.796	533,5
271 No	VESTAS	V112-3.000	3.000	112,0	84,0	530.397	4.550.891	542,9
272 No	VESTAS	V112-3.000	3.000	112,0	84,0	530.876	4.551.377	521,1
273 No	VESTAS	V112-3.000	3.000	112,0	84,0	531.888	4.550.643	513,1
274 No	VESTAS	V112-3.000	3.000	112,0	84,0	532.159	4.550.604	488,2
275 No	VESTAS	-7.200	7.200	172,0	117,0	527.402	4.544.764	669,6
276 No	VESTAS	-7.200	7.200	172,0	117,0	527.913	4.545.010	547,6
277 No	VESTAS	-7.200	7.200	172,0	117,0	526.893	4.545.186	620,5
278 No	VESTAS	-7.200	7.200	172,0	117,0	526.145	4.545.163	572,8
279 No	VESTAS	-7.200	7.200	172,0	117,0	527.649	4.544.157	645,6
280 No	VESTAS	V60-850	850	60,0	60,0	526.262	4.543.123	757,6
281 No	VESTAS	V20-100	100	20,0	23,4	525.654	4.543.103	739,1
282 No	VESTAS	V20-100	100	20,0	23,4	525.448	4.543.079	730,2
283 No	VESTAS	V20-100	100	20,0	23,4	525.145	4.543.345	756,4
284 No	VESTAS	V60-850	850	60,0	60,0	524.974	4.543.221	736,3
285 No	VESTAS	V60-850	850	60,0	60,0	526.396	4.548.572	648,6
286 No	VESTAS	V60-850	850	60,0	60,0	528.081	4.548.736	578,6
287 No	VESTAS	V20-100	100	20,0	23,4	527.855	4.548.664	593,6
288 No	VESTAS	V20-100	100	20,0	23,4	527.901	4.548.597	594,1
289 No	VESTAS	V20-100	100	20,0	23,4	528.022	4.548.517	588,2
290 No	VESTAS	V20-100	100	20,0	23,4	525.472	4.547.298	673,3
291 No	VESTAS	V60-850	850	60,0	60,0	529.543	4.543.138	746,3
292 No	VESTAS	V60-850	850	60,0	60,0	529.477	4.542.157	799,0
293 No	VESTAS	V20-100	100	20,0	23,4	525.603	4.541.389	803,0
294 No	VESTAS	V20-100	100	20,0	23,4	525.909	4.541.402	810,6
295 No	VESTAS	V20-100	100	20,0	23,4	525.819	4.541.253	808,8
296 No	VESTAS	V112-3.000	3.000	112,0	84,0	527.303	4.538.623	979,3
297 No	VESTAS	V20-100	100	20,0	23,4	527.184	4.538.538	966,3
298 No	VESTAS	V112-3.000	3.000	112,0	84,0	527.339	4.538.355	980,1
299 No	VESTAS	V112-3.000	3.000	112,0	84,0	527.426	4.538.137	963,0
300 No	VESTAS	V112-3.000	3.000	112,0	84,0	527.535	4.537.902	940,2
301 No	VESTAS	V20-100	100	20,0	23,4	526.987	4.538.602	950,0
302 No	VESTAS	V20-100	100	20,0	23,4	528.234	4.538.222	913,2
303 No	VESTAS	V20-100	100	20,0	23,4	528.484	4.538.295	893,0
304 No	VESTAS	V20-100	100	20,0	23,4	528.548	4.538.454	901,3
305 No	VESTAS	V20-100	100	20,0	23,4	528.660	4.538.505	896,5
306 No	VESTAS	V20-100	100	20,0	23,4	528.580	4.538.574	898,9
307 No	VESTAS	V20-100	100	20,0	23,4	528.657	4.538.791	888,6

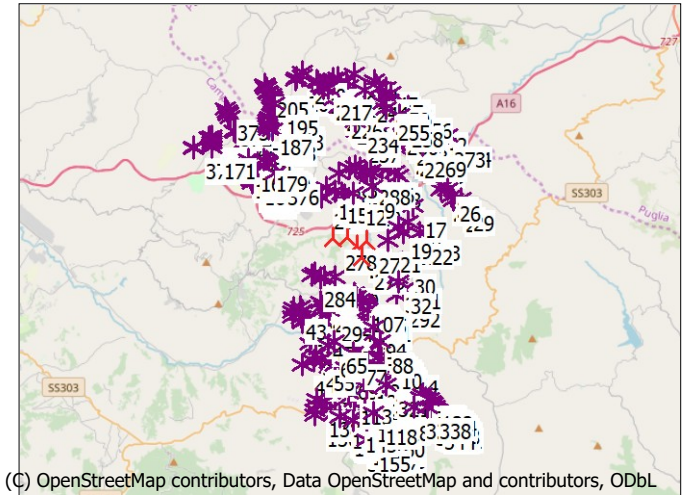
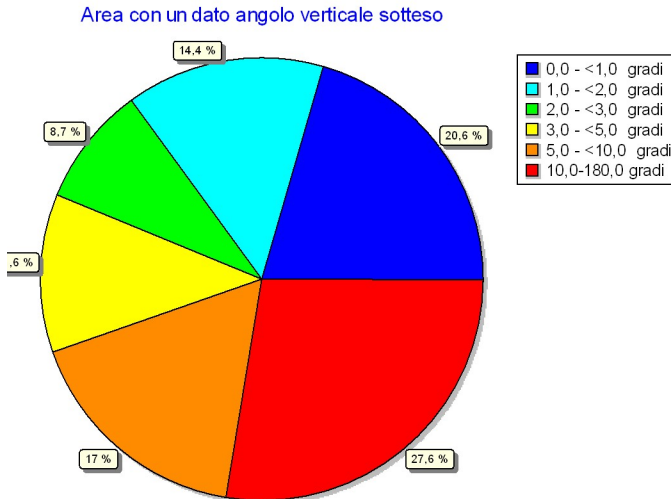
continua alla pagina successiva...

ZVI - Riepilogo ZVI standard

... continua dalla pagina precedente

Valida	Produttore	Tipo generatore	Potenza nominale [kW]	Diametro rotore [m]	Altezza mozzo [m]	Easting	Northing	Z [m]
308 No	VESTAS	V20-100	100	20,0	23,4	528.776	4.538.845	891,0
309 No	VESTAS	V60-850	850	60,0	60,0	528.679	4.538.972	884,5
310 No	VESTAS	V60-850	850	60,0	60,0	528.519	4.538.919	891,2
311 No	VESTAS	V60-850	850	60,0	60,0	528.493	4.539.091	886,3
312 No	VESTAS	V60-850	850	60,0	60,0	528.310	4.539.109	872,4
313 No	VESTAS	V60-850	850	60,0	60,0	528.563	4.539.234	880,0
314 No	VESTAS	V60-850	850	60,0	60,0	529.397	4.538.612	850,3
315 No	VESTAS	V60-850	850	60,0	60,0	528.446	4.537.806	870,8
316 No	VESTAS	V60-850	850	60,0	60,0	528.693	4.537.592	875,6
317 No	VESTAS	V20-100	100	20,0	23,4	528.786	4.537.734	856,0
318 No	VESTAS	V20-100	100	20,0	23,4	528.805	4.537.645	867,0
319 No	VESTAS	V20-100	100	20,0	23,4	528.866	4.537.591	866,1
320 No	VESTAS	V20-100	100	20,0	23,4	528.967	4.537.605	848,8
321 No	VESTAS	V60-850	850	60,0	60,0	528.895	4.537.446	860,1
322 No	VESTAS	V60-850	850	60,0	60,0	529.860	4.536.551	818,6
323 No	VESTAS	V60-850	850	60,0	60,0	529.944	4.536.434	827,1
324 No	VESTAS	V60-850	850	60,0	60,0	530.024	4.536.380	830,8
325 No	VESTAS	V60-850	850	60,0	60,0	530.161	4.536.319	832,0
326 No	VESTAS	V60-850	850	60,0	60,0	530.146	4.536.816	832,9
327 No	VESTAS	V20-100	100	20,0	60,0	530.451	4.536.307	841,5
328 No	VESTAS	V20-100	100	20,0	23,4	530.675	4.536.817	841,3
329 No	VESTAS	V20-100	100	20,0	23,4	530.696	4.536.962	837,1
330 No	VESTAS	V20-100	100	20,0	23,4	530.797	4.536.987	832,6
331 No	VESTAS	V20-100	100	20,0	23,4	530.889	4.536.941	836,9
332 No	VESTAS	V20-100	100	20,0	23,4	530.797	4.536.823	839,0
333 No	VESTAS	V20-100	100	20,0	23,4	530.884	4.536.697	832,9
334 No	VESTAS	V20-100	100	20,0	23,4	531.050	4.536.570	834,4
335 No	VESTAS	V20-100	100	20,0	23,4	530.991	4.536.423	829,8
336 No	VESTAS	V20-100	100	20,0	23,4	531.171	4.536.503	840,3
337 No	VESTAS	V20-100	100	20,0	23,4	531.167	4.536.417	836,5
338 No	VESTAS	V20-100	100	20,0	23,4	531.111	4.536.323	826,7
339 No	VESTAS	V20-100	100	20,0	23,4	531.364	4.536.299	831,9
340 No	VESTAS	V20-100	100	20,0	23,4	531.527	4.536.297	831,9
341 No	VESTAS	V20-100	100	20,0	23,4	530.965	4.535.957	818,9
342 No	VESTAS	V20-100	100	20,0	23,4	531.093	4.535.925	823,3
343 No	VESTAS	V20-100	100	20,0	23,4	531.253	4.535.866	826,1
344 No	VESTAS	V20-100	100	20,0	23,4	531.395	4.535.753	824,5
345 No	VESTAS	V20-100	100	20,0	23,4	531.543	4.535.752	838,8
346 No	VESTAS	V20-100	100	20,0	23,4	531.584	4.536.152	837,4
347 No	VESTAS	V20-100	100	20,0	23,4	531.669	4.536.060	836,0
348 No	VESTAS	V20-100	100	20,0	23,4	531.589	4.536.037	840,5
349 No	VESTAS	V20-100	100	20,0	23,4	531.584	4.535.915	849,0
350 No	VESTAS	V20-100	100	20,0	23,4	531.692	4.535.880	838,4
351 No	VESTAS	V20-100	100	20,0	23,4	531.752	4.535.810	839,5
352 No	VESTAS	V20-100	100	20,0	23,4	527.299	4.534.539	843,0
353 No	VESTAS	V20-100	100	20,0	23,4	527.362	4.534.524	850,5
354 No	VESTAS	V20-100	100	20,0	23,4	521.562	4.548.446	717,7
355 No	VESTAS	V20-100	100	20,0	23,4	521.864	4.548.126	679,6
356 No	VESTAS	V20-100	100	20,0	23,4	521.743	4.548.324	702,5
357 No	VESTAS	V20-100	100	20,0	23,4	521.781	4.548.233	691,8
358 No	VESTAS	V20-100	100	20,0	23,4	521.797	4.548.387	711,9
359 No	VESTAS	V20-100	100	20,0	23,4	521.612	4.548.601	739,7
360 No	VESTAS	V20-100	100	20,0	23,4	521.534	4.550.033	815,3
361 No	VESTAS	V60-850	850	60,0	60,0	521.610	4.550.083	814,2
362 No	VESTAS	V20-100	100	20,0	23,4	521.386	4.550.240	813,7
363 No	VESTAS	V20-100	100	20,0	23,4	521.530	4.550.308	820,8
364 No	VESTAS	V20-100	100	20,0	23,4	520.993	4.550.746	795,1
365 No	VESTAS	V20-100	100	20,0	23,4	520.935	4.550.762	795,4
366 No	VESTAS	V20-100	100	20,0	23,4	520.869	4.550.798	796,8
367 No	VESTAS	V20-100	100	20,0	23,4	520.834	4.550.831	797,4
368 No	VESTAS	V20-100	100	20,0	23,4	518.694	4.549.869	724,0
369 No	VESTAS	V60-850	850	60,0	60,0	518.742	4.549.898	724,6
370 No	VESTAS	V20-100	100	20,0	23,4	518.734	4.549.952	728,2
371 No	VESTAS	V60-850	850	60,0	60,0	520.613	4.551.560	870,0
372 No	VESTAS	V60-850	850	60,0	60,0	520.578	4.551.656	870,2
373 No	VESTAS	V60-850	850	60,0	60,0	520.550	4.551.758	872,5
374 No	VESTAS	V60-850	850	60,0	60,0	520.523	4.551.842	872,9
375 No	VESTAS	V60-850	850	60,0	60,0	520.404	4.552.017	867,9
376 No	VESTAS	V20-100	100	20,0	23,4	523.039	4.548.564	656,9
377 No	VESTAS	V20-100	100	20,0	23,4	523.089	4.548.519	653,0
378 No	VESTAS	V20-100	100	20,0	23,4	530.478	4.536.475	840,4

ZVI - Angolo verticale sotteso



Scala 1:400.000
 ▲ Nuova WTG * WTG preesistente

Assunzioni sul calcolo ZVI

Centro del calcolo
 Dimensione X dell'area di calcolo
 Dimensione Y dell'area di calcolo
 Risoluzione del calcolo
 Altezza dell'osservatore
 Area di calcolo
 Punto più alto visibile della WTG
 Ostacoli usati:
 Oggetto DEM
 Nessun Oggetto Aree usato nel calcolo
 Nuove WTG utilizzate nel calcolo
 WTG preesistenti usate nel calcolo

UTM (north)-WGS84 Zone: 33 Est: 526.975 Nord: 4.544.461
 20.000 m
 20.000 m
 25 m
 1,5 m
 40.100 ha
 Altezza mozzo + 1/2 Diametro Rotore
 0
 Project Wizard Elevation Data Grid (SRTM: Shuttle DTM 1 arc-second)

5
 373

Nessuna distanza massima dalla WTG

Risultati ZVI

Angolo verticale sotteso [gradi]	Area [ha]	Area [%]
0,0 - <1,0	8258	20,6
1,0 - <2,0	5790	14,4
2,0 - <3,0	3498	8,7
3,0 - <5,0	4633	11,6
5,0 - <10,0	6834	17,0
10,0 - <=180,0	11087	27,6

WTG

Valida	Produttore	Tipo generatore	Potenza nominale [kW]	Diametro rotore [m]	Altezza mozzo [m]	Easting	Northing	Z [m]
1	No	VESTAS V112-3.000	3.000	112,0	84,0	527.330	4.551.112	724,8
2	No	VESTAS V112-3.000	3.000	112,0	84,0	526.952	4.548.908	607,4
3	No	VESTAS V112-3.000	3.000	112,0	84,0	527.251	4.548.989	603,3
4	No	VESTAS V112-3.000	3.000	112,0	84,0	527.565	4.548.871	599,0
5	No	VESTAS V112-3.000	3.000	112,0	84,0	528.672	4.548.901	537,3
6	No	VESTAS V112-3.000	3.000	112,0	84,0	528.992	4.548.827	543,6
7	No	VESTAS V112-3.000	3.000	112,0	84,0	529.313	4.548.680	524,9
8	No	VESTAS V112-3.000	3.000	112,0	84,0	529.576	4.548.488	494,3
9	No	VESTAS V112-3.000	3.000	112,0	84,0	528.176	4.547.919	518,6
10	No	VESTAS V112-3.000	3.000	112,0	84,0	527.966	4.547.487	502,2
11	No	VESTAS V112-3.000	3.000	112,0	84,0	527.525	4.547.568	561,7
12	No	VESTAS V112-3.000	3.000	112,0	84,0	527.148	4.547.573	586,1
13	No	VESTAS V112-3.000	3.000	112,0	84,0	526.700	4.547.422	593,3
14	No	VESTAS V112-3.000	3.000	112,0	84,0	526.547	4.547.570	601,8
15	No	VESTAS V112-3.000	3.000	112,0	84,0	526.253	4.547.665	646,9
16	No	VESTAS V112-3.000	3.000	112,0	84,0	525.774	4.547.816	693,4
17	No	VESTAS V112-3.000	3.000	112,0	84,0	530.334	4.546.908	548,2
18	No	VESTAS V112-3.000	3.000	112,0	84,0	530.095	4.546.043	648,6
19	No	VESTAS V112-3.000	3.000	112,0	84,0	529.566	4.545.807	665,4
20	No	VESTAS V112-3.000	3.000	112,0	84,0	529.833	4.545.507	686,6
21	No	VESTAS V112-3.000	3.000	112,0	84,0	528.976	4.545.081	642,2
22	No	VESTAS V112-3.000	3.000	112,0	84,0	530.701	4.545.490	590,1
23	No	VESTAS V112-3.000	3.000	112,0	84,0	531.090	4.545.656	562,2
24	No	VESTAS V112-3.000	3.000	112,0	84,0	531.822	4.547.750	506,9
25	No	VESTAS V112-3.000	3.000	112,0	84,0	531.968	4.547.983	496,5
26	No	VESTAS V112-3.000	3.000	112,0	84,0	532.174	4.547.776	539,3
27	No	VESTAS V112-3.000	3.000	112,0	84,0	532.362	4.547.429	527,8

continua alla pagina successiva...

ZVI - Angolo verticale sotteso

...continua dalla pagina precedente

Valida	Produttore	Tipo generatore	Potenza nominale [kW]	Diametro rotore [m]	Altezza mozzo [m]	Easting	Northing	Z [m]
28 No	VESTAS	V112-3.000	3.000	112,0	84,0	532.449	4.547.210	551,4
29 No	VESTAS	V112-3.000	3.000	112,0	84,0	532.835	4.547.279	600,4
30 No	VESTAS	V112-3.000	3.000	112,0	84,0	529.777	4.543.870	724,1
31 No	VESTAS	V112-3.000	3.000	112,0	84,0	529.590	4.543.384	724,0
32 No	VESTAS	V112-3.000	3.000	112,0	84,0	529.601	4.542.885	767,2
33 No	VESTAS	V112-3.000	3.000	112,0	84,0	529.329	4.542.956	743,1
34 No	VESTAS	V112-3.000	3.000	112,0	84,0	529.813	4.542.490	798,8
35 No	VESTAS	V112-3.000	3.000	112,0	84,0	524.520	4.540.745	742,3
36 No	VESTAS	V112-3.000	3.000	112,0	84,0	524.668	4.540.962	770,6
37 No	VESTAS	V112-3.000	3.000	112,0	84,0	524.445	4.540.989	735,5
38 No	VESTAS	V112-3.000	3.000	112,0	84,0	524.488	4.541.352	765,3
39 No	VESTAS	V112-3.000	3.000	112,0	84,0	524.422	4.541.565	737,1
40 No	VESTAS	V112-3.000	3.000	112,0	84,0	524.325	4.541.199	766,3
41 No	VESTAS	V112-3.000	3.000	112,0	84,0	524.018	4.541.056	721,8
42 No	VESTAS	V112-3.000	3.000	112,0	84,0	524.016	4.541.282	715,6
43 No	VESTAS	V112-3.000	3.000	112,0	84,0	524.026	4.541.507	695,5
44 No	VESTAS	V112-3.000	3.000	112,0	84,0	525.437	4.541.787	769,1
45 No	VESTAS	V112-3.000	3.000	112,0	84,0	525.590	4.541.633	781,9
46 No	VESTAS	V112-3.000	3.000	112,0	84,0	525.764	4.541.507	803,7
47 No	VESTAS	V112-3.000	3.000	112,0	84,0	525.414	4.540.393	803,2
48 No	VESTAS	V112-3.000	3.000	112,0	84,0	524.544	4.538.534	766,9
49 No	VESTAS	V112-3.000	3.000	112,0	84,0	525.099	4.538.711	840,5
50 No	VESTAS	V112-3.000	3.000	112,0	84,0	525.209	4.539.015	844,3
51 No	VESTAS	V112-3.000	3.000	112,0	84,0	525.089	4.539.425	805,1
52 No	VESTAS	V112-3.000	3.000	112,0	84,0	524.940	4.539.621	776,1
53 No	VESTAS	V112-3.000	3.000	112,0	84,0	525.382	4.539.365	842,4
54 No	VESTAS	V112-3.000	3.000	112,0	84,0	525.649	4.539.208	877,6
55 No	VESTAS	V112-3.000	3.000	112,0	84,0	525.517	4.538.839	869,2
56 No	VESTAS	V112-3.000	3.000	112,0	84,0	525.897	4.538.117	876,0
57 No	VESTAS	V112-3.000	3.000	112,0	84,0	525.899	4.538.401	874,7
58 No	VESTAS	V112-3.000	3.000	112,0	84,0	526.240	4.538.518	890,8
59 No	VESTAS	V112-3.000	3.000	112,0	84,0	526.481	4.538.474	898,8
60 No	VESTAS	V112-3.000	3.000	112,0	84,0	526.014	4.538.682	886,4
61 No	VESTAS	V112-3.000	3.000	112,0	84,0	525.939	4.538.979	892,1
62 No	VESTAS	V112-3.000	3.000	112,0	84,0	525.916	4.539.216	892,0
63 No	VESTAS	V112-3.000	3.000	112,0	84,0	525.828	4.539.485	880,6
64 No	VESTAS	V112-3.000	3.000	112,0	84,0	525.712	4.539.693	842,2
65 No	VESTAS	V112-3.000	3.000	112,0	84,0	526.184	4.539.727	846,7
66 No	VESTAS	V112-3.000	3.000	112,0	84,0	526.370	4.539.552	867,2
67 No	VESTAS	V112-3.000	3.000	112,0	84,0	526.346	4.539.078	880,5
68 No	VESTAS	V112-3.000	3.000	112,0	84,0	526.629	4.538.820	904,3
69 No	VESTAS	V112-3.000	3.000	112,0	84,0	526.804	4.538.379	924,0
70 No	VESTAS	V112-3.000	3.000	112,0	84,0	526.945	4.538.071	931,5
71 No	VESTAS	V47-660/200	660	47,0	50,0	527.054	4.540.094	877,8
72 No	VESTAS	V112-3.000	3.000	112,0	84,0	527.358	4.540.089	857,7
73 No	VESTAS	V47-660/200	660	47,0	50,0	527.001	4.539.628	887,7
74 No	VESTAS	V47-660/200	660	47,0	50,0	527.056	4.539.488	903,5
75 No	VESTAS	V47-660/200	660	47,0	50,0	527.101	4.539.358	912,2
76 No	VESTAS	V47-660/200	660	47,0	50,0	527.152	4.539.231	923,5
77 No	VESTAS	V47-660/200	660	47,0	50,0	527.196	4.539.136	931,6
78 No	VESTAS	V47-660/200	660	47,0	50,0	527.243	4.539.001	943,7
79 No	VESTAS	V47-660/200	660	47,0	50,0	527.299	4.538.849	955,1
80 No	VESTAS	V112-3.000	3.000	112,0	84,0	527.647	4.538.752	933,2
81 No	VESTAS	V112-3.000	3.000	112,0	84,0	527.042	4.538.413	951,5
82 No	VESTAS	V112-3.000	3.000	112,0	84,0	527.174	4.538.249	956,9
83 No	VESTAS	V112-3.000	3.000	112,0	84,0	527.794	4.538.329	938,0
84 No	VESTAS	V112-3.000	3.000	112,0	84,0	527.992	4.538.588	903,3
85 No	VESTAS	V47-660/200	660	47,0	50,0	529.024	4.539.396	884,0
86 No	VESTAS	V47-660/200	660	47,0	50,0	528.873	4.539.514	892,6
87 No	VESTAS	V47-660/200	660	47,0	50,0	528.664	4.539.604	893,4
88 No	VESTAS	V47-660/200	660	47,0	50,0	528.612	4.539.725	892,0
89 No	VESTAS	V47-660/200	660	47,0	50,0	528.522	4.539.821	886,5
90 No	VESTAS	V47-660/200	660	47,0	50,0	528.394	4.539.891	877,2
91 No	VESTAS	V47-660/200	660	47,0	50,0	528.353	4.540.135	853,3
92 No	VESTAS	V47-660/200	660	47,0	50,0	528.255	4.540.222	845,9
93 No	VESTAS	V47-660/200	660	47,0	50,0	528.250	4.540.408	845,9
94 No	VESTAS	V47-660/200	660	47,0	50,0	528.252	4.540.520	853,4
95 No	VESTAS	V47-660/200	660	47,0	50,0	528.205	4.540.684	874,9
96 No	VESTAS	V47-660/200	660	47,0	50,0	528.180	4.540.762	875,8
97 No	VESTAS	V47-660/200	660	47,0	50,0	528.127	4.540.913	876,9

continua alla pagina successiva...

ZVI - Angolo verticale sotteso

... continua dalla pagina precedente

Valida	Produttore	Tipo generatore	Potenza nominale [kW]	Diametro rotore [m]	Altezza mozzo [m]	Eastings	Northing	Z [m]
98 No	VESTAS	V47-660/200	660	47,0	50,0	528.045	4.541.013	867,3
99 No	VESTAS	V47-660/200	660	47,0	50,0	527.993	4.541.108	858,8
100 No	VESTAS	V47-660/200	660	47,0	50,0	527.981	4.541.228	843,2
101 No	VESTAS	V47-660/200	660	47,0	50,0	527.992	4.541.407	843,7
102 No	VESTAS	V47-660/200	660	47,0	50,0	527.923	4.541.524	844,0
103 No	VESTAS	V47-660/200	660	47,0	50,0	527.857	4.541.615	845,9
104 No	VESTAS	V47-660/200	660	47,0	50,0	527.785	4.541.708	840,0
105 No	VESTAS	V47-660/200	660	47,0	50,0	527.673	4.541.806	828,8
106 No	VESTAS	V47-660/200	660	47,0	50,0	527.625	4.541.865	828,1
107 No	VESTAS	V47-660/200	660	47,0	50,0	527.551	4.541.929	829,9
108 No	VESTAS	V47-660/200	660	47,0	50,0	527.445	4.542.007	823,0
109 No	VESTAS	V47-660/200	660	47,0	50,0	527.363	4.542.108	826,2
110 No	VESTAS	V47-660/200	660	47,0	50,0	527.297	4.542.202	827,9
111 No	VESTAS	V47-660/200	660	47,0	50,0	527.197	4.542.289	815,7
112 No	VESTAS	V112-3.000	3.000	112,0	84,0	527.020	4.537.278	887,4
113 No	VESTAS	V112-3.000	3.000	112,0	84,0	526.967	4.537.059	887,1
114 No	VESTAS	V112-3.000	3.000	112,0	84,0	527.043	4.536.839	878,9
115 No	VESTAS	V112-3.000	3.000	112,0	84,0	527.228	4.536.630	871,1
116 No	VESTAS	V112-3.000	3.000	112,0	84,0	527.512	4.536.452	861,0
117 No	VESTAS	V112-3.000	3.000	112,0	84,0	527.845	4.536.125	854,4
118 No	VESTAS	V112-3.000	3.000	112,0	84,0	528.292	4.536.021	854,7
119 No	VESTAS	V112-3.000	3.000	112,0	84,0	528.488	4.535.853	839,2
120 No	VESTAS	V112-3.000	3.000	112,0	84,0	527.912	4.536.672	853,3
121 No	VESTAS	V112-3.000	3.000	112,0	84,0	527.898	4.537.032	878,4
122 No	VESTAS	V112-3.000	3.000	112,0	84,0	527.373	4.537.287	889,4
123 No	VESTAS	V112-3.000	3.000	112,0	84,0	527.922	4.537.316	898,2
124 No	VESTAS	V112-3.000	3.000	112,0	84,0	527.895	4.537.572	918,6
125 No	VESTAS	V112-3.000	3.000	112,0	84,0	527.749	4.537.767	927,1
126 No	VESTAS	V112-3.000	3.000	112,0	84,0	529.154	4.537.459	834,1
127 No	VESTAS	V112-3.000	3.000	112,0	84,0	529.654	4.536.879	821,1
128 No	VESTAS	V112-3.000	3.000	112,0	84,0	528.904	4.536.178	846,2
129 No	VESTAS	V112-3.000	3.000	112,0	84,0	530.416	4.536.656	843,5
130 No	VESTAS	V112-3.000	3.000	112,0	84,0	530.642	4.536.304	830,7
131 No	VESTAS	V47-660/200	660	47,0	50,0	531.076	4.536.787	844,9
132 No	VESTAS	V47-660/200	660	47,0	50,0	531.211	4.536.706	845,6
133 No	VESTAS	V47-660/200	660	47,0	50,0	531.352	4.536.553	838,8
134 No	VESTAS	V47-660/200	660	47,0	50,0	531.441	4.536.474	831,9
135 No	VESTAS	V47-660/200	660	47,0	50,0	531.349	4.536.050	839,0
136 No	VESTAS	V112-3.000	3.000	112,0	84,0	525.193	4.535.869	844,9
137 No	VESTAS	V112-3.000	3.000	112,0	84,0	525.171	4.536.105	861,7
138 No	VESTAS	V112-3.000	3.000	112,0	84,0	525.267	4.536.379	857,4
139 No	VESTAS	V112-3.000	3.000	112,0	84,0	525.271	4.536.661	853,8
140 No	VESTAS	V112-3.000	3.000	112,0	84,0	525.735	4.536.546	831,6
141 No	VESTAS	V112-3.000	3.000	112,0	84,0	526.003	4.536.158	841,1
142 No	VESTAS	V112-3.000	3.000	112,0	84,0	526.284	4.535.970	861,2
143 No	VESTAS	V112-3.000	3.000	112,0	84,0	526.479	4.535.743	882,9
144 No	VESTAS	V112-3.000	3.000	112,0	84,0	526.843	4.535.600	860,9
145 No	VESTAS	V112-3.000	3.000	112,0	84,0	527.203	4.535.593	846,6
146 No	VESTAS	V112-3.000	3.000	112,0	84,0	526.467	4.535.554	885,3
147 No	VESTAS	V112-3.000	3.000	112,0	84,0	526.538	4.535.461	882,9
148 No	VESTAS	V112-3.000	3.000	112,0	84,0	526.597	4.535.373	881,4
149 No	VESTAS	V112-3.000	3.000	112,0	84,0	526.680	4.535.270	874,4
150 No	VESTAS	V112-3.000	3.000	112,0	84,0	526.768	4.535.176	861,1
151 No	VESTAS	V112-3.000	3.000	112,0	84,0	527.522	4.535.488	840,7
152 No	VESTAS	V112-3.000	3.000	112,0	84,0	527.506	4.535.126	845,0
153 No	VESTAS	V112-3.000	3.000	112,0	84,0	527.592	4.534.892	853,0
154 No	VESTAS	V112-3.000	3.000	112,0	84,0	527.770	4.534.732	862,3
155 No	VESTAS	V112-3.000	3.000	112,0	84,0	527.952	4.534.580	868,3
156 No	VESTAS	V112-3.000	3.000	112,0	84,0	528.225	4.535.185	840,2
157 No	VESTAS	V112-3.000	3.000	112,0	84,0	528.388	4.534.681	868,5
158 No	VESTAS	V112-3.000	3.000	112,0	84,0	528.776	4.534.729	845,4
159 No	VESTAS	V112-3.000	3.000	112,0	84,0	528.735	4.535.101	845,5
160 No	VESTAS	V112-3.000	3.000	112,0	84,0	528.699	4.535.306	841,0
161 No	VESTAS	V112-3.000	3.000	112,0	84,0	521.946	4.548.418	706,0
162 No	VESTAS	V112-3.000	3.000	112,0	84,0	521.817	4.548.602	737,5
163 No	VESTAS	V112-3.000	3.000	112,0	84,0	521.639	4.548.787	756,8
164 No	VESTAS	V112-3.000	3.000	112,0	84,0	521.318	4.548.994	791,7
165 No	VESTAS	V112-3.000	3.000	112,0	84,0	521.616	4.549.089	791,3
166 No	VESTAS	V112-3.000	3.000	112,0	84,0	521.190	4.549.175	788,7
167 No	VESTAS	V112-3.000	3.000	112,0	84,0	521.617	4.549.328	812,9

continua alla pagina successiva...

ZVI - Angolo verticale sotteso

... continua dalla pagina precedente

Valida	Produttore	Tipo generatore	Potenza nominale [kW]	Diametro rotore [m]	Altezza mozzo [m]	Easting	Northing	Z [m]	
168	No	VESTAS	V112-3.000	3.000	112,0	84,0	521.394	4.549.512	823,7
169	No	VESTAS	V112-3.000	3.000	112,0	84,0	521.679	4.549.622	801,3
170	No	VESTAS	V112-3.000	3.000	112,0	84,0	521.587	4.549.815	810,1
171	No	VESTAS	V112-3.000	3.000	112,0	84,0	519.713	4.549.948	712,3
172	No	VESTAS	V112-3.000	3.000	112,0	84,0	519.724	4.550.100	736,7
173	No	VESTAS	V112-3.000	3.000	112,0	84,0	519.711	4.550.239	749,8
174	No	VESTAS	V112-3.000	3.000	112,0	84,0	519.696	4.550.340	758,2
175	No	VESTAS	V112-3.000	3.000	112,0	84,0	519.535	4.550.440	757,4
176	No	VESTAS	V112-3.000	3.000	112,0	84,0	519.610	4.550.473	778,2
177	No	VESTAS	V112-3.000	3.000	112,0	84,0	519.685	4.550.544	791,5
178	No	VESTAS	V112-3.000	3.000	112,0	84,0	522.181	4.549.453	760,5
179	No	VESTAS	V112-3.000	3.000	112,0	84,0	522.410	4.549.322	738,2
180	No	VESTAS	V112-3.000	3.000	112,0	84,0	522.558	4.549.212	723,8
181	No	VESTAS	V112-3.000	3.000	112,0	84,0	522.676	4.549.096	709,1
182	No	VESTAS	V112-3.000	3.000	112,0	84,0	522.814	4.548.972	693,0
183	No	VESTAS	V112-3.000	3.000	112,0	84,0	522.848	4.550.874	863,8
184	No	VESTAS	V112-3.000	3.000	112,0	84,0	522.723	4.550.950	864,9
185	No	VESTAS	V112-3.000	3.000	112,0	84,0	522.677	4.551.027	864,2
186	No	VESTAS	V112-3.000	3.000	112,0	84,0	522.637	4.551.121	864,8
187	No	VESTAS	V112-3.000	3.000	112,0	84,0	522.630	4.551.218	867,7
188	No	VESTAS	V112-3.000	3.000	112,0	84,0	522.665	4.551.370	862,3
189	No	VESTAS	V112-3.000	3.000	112,0	84,0	522.709	4.551.475	868,1
190	No	VESTAS	V112-3.000	3.000	112,0	84,0	522.740	4.551.567	874,5
191	No	VESTAS	V112-3.000	3.000	112,0	84,0	522.792	4.551.670	886,1
192	No	VESTAS	V112-3.000	3.000	112,0	84,0	523.248	4.551.613	874,4
193	No	VESTAS	V112-3.000	3.000	112,0	84,0	523.287	4.551.531	866,6
194	No	VESTAS	V112-3.000	3.000	112,0	84,0	523.322	4.551.452	861,3
195	No	VESTAS	V112-3.000	3.000	112,0	84,0	522.969	4.552.267	934,8
196	No	VESTAS	V112-3.000	3.000	112,0	84,0	522.923	4.552.352	937,0
197	No	VESTAS	V112-3.000	3.000	112,0	84,0	522.913	4.552.451	942,1
198	No	VESTAS	V112-3.000	3.000	112,0	84,0	522.891	4.552.533	942,9
199	No	VESTAS	V112-3.000	3.000	112,0	84,0	522.791	4.552.607	942,7
200	No	VESTAS	V112-3.000	3.000	112,0	84,0	522.778	4.552.710	937,7
201	No	VESTAS	V112-3.000	3.000	112,0	84,0	522.700	4.552.840	929,0
202	No	VESTAS	V112-3.000	3.000	112,0	84,0	522.637	4.552.907	935,1
203	No	VESTAS	V112-3.000	3.000	112,0	84,0	522.568	4.553.029	958,2
204	No	VESTAS	V112-3.000	3.000	112,0	84,0	522.496	4.553.096	972,7
205	No	VESTAS	V112-3.000	3.000	112,0	84,0	522.464	4.553.206	983,8
206	No	VESTAS	V112-3.000	3.000	112,0	84,0	522.467	4.553.315	980,3
207	No	VESTAS	V112-3.000	3.000	112,0	84,0	524.072	4.553.538	902,1
208	No	VESTAS	V112-3.000	3.000	112,0	84,0	524.111	4.553.627	907,5
209	No	VESTAS	V112-3.000	3.000	112,0	84,0	524.467	4.553.765	900,9
210	No	VESTAS	V112-3.000	3.000	112,0	84,0	524.495	4.553.918	882,9
211	No	VESTAS	V112-3.000	3.000	112,0	84,0	525.224	4.553.461	904,7
212	No	VESTAS	V112-3.000	3.000	112,0	84,0	525.303	4.553.399	896,6
213	No	VESTAS	V112-3.000	3.000	112,0	84,0	525.319	4.553.297	892,0
214	No	VESTAS	V112-3.000	3.000	112,0	84,0	525.376	4.553.246	888,5
215	No	VESTAS	V112-3.000	3.000	112,0	84,0	525.486	4.553.170	875,8
216	No	VESTAS	V112-3.000	3.000	112,0	84,0	525.557	4.553.092	880,1
217	No	VESTAS	V112-3.000	3.000	112,0	84,0	525.778	4.553.074	866,3
218	No	VESTAS	V112-3.000	3.000	112,0	84,0	525.948	4.552.988	845,5
219	No	VESTAS	V112-3.000	3.000	112,0	84,0	526.090	4.552.776	829,7
220	No	VESTAS	V112-3.000	3.000	112,0	84,0	526.119	4.552.683	827,2
221	No	VESTAS	V112-3.000	3.000	112,0	84,0	526.134	4.552.584	827,1
222	No	VESTAS	V112-3.000	3.000	112,0	84,0	526.151	4.552.482	829,4
223	No	VESTAS	V112-3.000	3.000	112,0	84,0	526.200	4.552.400	824,1
224	No	VESTAS	V112-3.000	3.000	112,0	84,0	526.267	4.552.326	818,7
225	No	VESTAS	V112-3.000	3.000	112,0	84,0	526.263	4.552.223	816,8
226	No	VESTAS	V112-3.000	3.000	112,0	84,0	526.382	4.552.101	808,5
227	No	VESTAS	V112-3.000	3.000	112,0	84,0	526.442	4.552.017	817,3
228	No	VESTAS	V112-3.000	3.000	112,0	84,0	526.500	4.551.937	817,4
229	No	VESTAS	V112-3.000	3.000	112,0	84,0	526.578	4.551.870	821,2
230	No	VESTAS	V112-3.000	3.000	112,0	84,0	526.643	4.551.828	819,0
231	No	VESTAS	V112-3.000	3.000	112,0	84,0	526.740	4.551.759	809,6
232	No	VESTAS	V112-3.000	3.000	112,0	84,0	526.817	4.551.705	802,5
233	No	VESTAS	V112-3.000	3.000	112,0	84,0	527.220	4.551.450	750,0
234	No	VESTAS	V112-3.000	3.000	112,0	84,0	527.272	4.551.362	749,5
235	No	VESTAS	V112-3.000	3.000	112,0	84,0	527.330	4.551.112	724,8
236	No	VESTAS	V112-3.000	3.000	112,0	84,0	527.331	4.550.991	716,1
237	No	VESTAS	V112-3.000	3.000	112,0	84,0	527.294	4.550.848	717,1

continua alla pagina successiva...

ZVI - Angolo verticale sotteso

... continua dalla pagina precedente

Valida	Produttore	Tipo generatore	Potenza nominale [kW]	Diametro rotore [m]	Altezza mozzo [m]	Easting	Northing	Z [m]
238 No	VESTAS	V112-3.000	3.000	112,0	84,0	526.101	4.553.594	775,7
239 No	VESTAS	V112-3.000	3.000	112,0	84,0	526.335	4.553.656	759,5
240 No	VESTAS	V112-3.000	3.000	112,0	84,0	526.432	4.553.206	773,4
241 No	VESTAS	V112-3.000	3.000	112,0	84,0	526.887	4.553.197	735,7
242 No	VESTAS	V112-3.000	3.000	112,0	84,0	526.805	4.553.412	733,9
243 No	VESTAS	V112-3.000	3.000	112,0	84,0	527.209	4.553.816	652,7
244 No	VESTAS	V112-3.000	3.000	112,0	84,0	527.747	4.552.934	642,9
245 No	VESTAS	V112-3.000	3.000	112,0	84,0	528.253	4.553.503	594,8
246 No	VESTAS	V112-3.000	3.000	112,0	84,0	528.421	4.553.258	599,1
247 No	VESTAS	V112-3.000	3.000	112,0	84,0	528.534	4.553.059	600,0
248 No	VESTAS	V112-3.000	3.000	112,0	84,0	528.717	4.552.930	596,2
249 No	VESTAS	V112-3.000	3.000	112,0	84,0	528.881	4.553.066	587,5
250 No	VESTAS	V112-3.000	3.000	112,0	84,0	528.860	4.552.687	598,5
251 No	VESTAS	V112-3.000	3.000	112,0	84,0	529.153	4.552.842	589,7
252 No	VESTAS	V112-3.000	3.000	112,0	84,0	529.038	4.552.431	608,6
253 No	VESTAS	V112-3.000	3.000	112,0	84,0	528.727	4.552.338	614,6
254 No	VESTAS	V112-3.000	3.000	112,0	84,0	529.126	4.552.217	602,6
255 No	VESTAS	V112-3.000	3.000	112,0	84,0	528.858	4.552.054	606,4
256 No	VESTAS	V112-3.000	3.000	112,0	84,0	530.047	4.552.124	599,0
257 No	VESTAS	V112-3.000	3.000	112,0	84,0	529.770	4.551.931	602,8
258 No	VESTAS	V112-3.000	3.000	112,0	84,0	529.607	4.551.670	599,5
259 No	VESTAS	V112-3.000	3.000	112,0	84,0	529.350	4.551.431	606,4
260 No	VESTAS	V112-3.000	3.000	112,0	84,0	529.313	4.551.222	605,7
261 No	VESTAS	V112-3.000	3.000	112,0	84,0	529.489	4.551.088	596,6
262 No	VESTAS	V112-3.000	3.000	112,0	84,0	529.846	4.551.041	564,9
263 No	VESTAS	V112-3.000	3.000	112,0	84,0	529.866	4.550.742	564,9
264 No	VESTAS	V112-3.000	3.000	112,0	84,0	529.800	4.550.278	566,0
265 No	VESTAS	V112-3.000	3.000	112,0	84,0	530.017	4.550.175	559,8
266 No	VESTAS	V112-3.000	3.000	112,0	84,0	530.225	4.550.060	557,4
267 No	VESTAS	V112-3.000	3.000	112,0	84,0	530.428	4.549.949	550,4
268 No	VESTAS	V112-3.000	3.000	112,0	84,0	530.690	4.549.775	543,3
269 No	VESTAS	V112-3.000	3.000	112,0	84,0	530.802	4.550.128	534,6
270 No	VESTAS	V112-3.000	3.000	112,0	84,0	530.603	4.550.796	533,5
271 No	VESTAS	V112-3.000	3.000	112,0	84,0	530.397	4.550.891	542,9
272 No	VESTAS	V112-3.000	3.000	112,0	84,0	530.876	4.551.377	521,1
273 No	VESTAS	V112-3.000	3.000	112,0	84,0	531.888	4.550.643	513,1
274 No	VESTAS	V112-3.000	3.000	112,0	84,0	532.159	4.550.604	488,2
275 No	VESTAS	-7.200	7.200	172,0	117,0	527.402	4.544.764	669,6
276 No	VESTAS	-7.200	7.200	172,0	117,0	527.913	4.545.010	547,6
277 No	VESTAS	-7.200	7.200	172,0	117,0	526.893	4.545.186	620,5
278 No	VESTAS	-7.200	7.200	172,0	117,0	526.145	4.545.163	572,8
279 No	VESTAS	-7.200	7.200	172,0	117,0	527.649	4.544.157	645,6
280 No	VESTAS	V60-850	850	60,0	60,0	526.262	4.543.123	757,6
281 No	VESTAS	V20-100	100	20,0	23,4	525.654	4.543.103	739,1
282 No	VESTAS	V20-100	100	20,0	23,4	525.448	4.543.079	730,2
283 No	VESTAS	V20-100	100	20,0	23,4	525.145	4.543.345	756,4
284 No	VESTAS	V60-850	850	60,0	60,0	524.974	4.543.221	736,3
285 No	VESTAS	V60-850	850	60,0	60,0	526.396	4.548.572	648,6
286 No	VESTAS	V60-850	850	60,0	60,0	528.081	4.548.736	578,6
287 No	VESTAS	V20-100	100	20,0	23,4	527.855	4.548.664	593,6
288 No	VESTAS	V20-100	100	20,0	23,4	527.901	4.548.597	594,1
289 No	VESTAS	V20-100	100	20,0	23,4	528.022	4.548.517	588,2
290 No	VESTAS	V20-100	100	20,0	23,4	525.472	4.547.298	673,3
291 No	VESTAS	V60-850	850	60,0	60,0	529.543	4.543.138	746,3
292 No	VESTAS	V60-850	850	60,0	60,0	529.477	4.542.157	799,0
293 No	VESTAS	V20-100	100	20,0	23,4	525.603	4.541.389	803,0
294 No	VESTAS	V20-100	100	20,0	23,4	525.909	4.541.402	810,6
295 No	VESTAS	V20-100	100	20,0	23,4	525.819	4.541.253	808,8
296 No	VESTAS	V112-3.000	3.000	112,0	84,0	527.303	4.538.623	979,3
297 No	VESTAS	V20-100	100	20,0	23,4	527.184	4.538.538	966,3
298 No	VESTAS	V112-3.000	3.000	112,0	84,0	527.339	4.538.355	980,1
299 No	VESTAS	V112-3.000	3.000	112,0	84,0	527.426	4.538.137	963,0
300 No	VESTAS	V112-3.000	3.000	112,0	84,0	527.535	4.537.902	940,2
301 No	VESTAS	V20-100	100	20,0	23,4	526.987	4.538.602	950,0
302 No	VESTAS	V20-100	100	20,0	23,4	528.234	4.538.222	913,2
303 No	VESTAS	V20-100	100	20,0	23,4	528.484	4.538.295	893,0
304 No	VESTAS	V20-100	100	20,0	23,4	528.548	4.538.454	901,3
305 No	VESTAS	V20-100	100	20,0	23,4	528.660	4.538.505	896,5
306 No	VESTAS	V20-100	100	20,0	23,4	528.580	4.538.574	898,9
307 No	VESTAS	V20-100	100	20,0	23,4	528.657	4.538.791	888,6

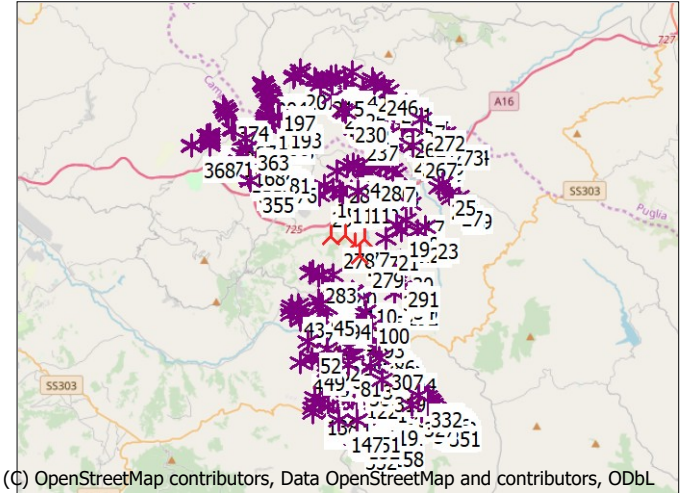
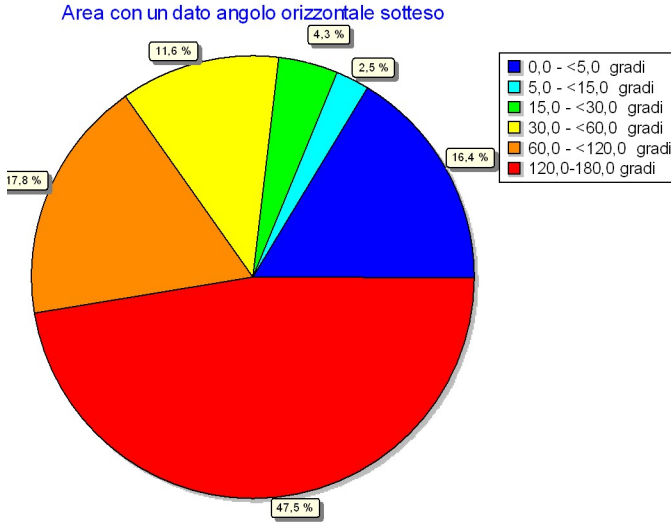
continua alla pagina successiva...

ZVI - Angolo verticale sotteso

... continua dalla pagina precedente

Valida	Produttore	Tipo generatore	Potenza nominale [kW]	Diametro rotore [m]	Altezza mozzo [m]	Easting	Northing	Z [m]
308 No	VESTAS	V20-100	100	20,0	23,4	528.776	4.538.845	891,0
309 No	VESTAS	V60-850	850	60,0	60,0	528.679	4.538.972	884,5
310 No	VESTAS	V60-850	850	60,0	60,0	528.519	4.538.919	891,2
311 No	VESTAS	V60-850	850	60,0	60,0	528.493	4.539.091	886,3
312 No	VESTAS	V60-850	850	60,0	60,0	528.310	4.539.109	872,4
313 No	VESTAS	V60-850	850	60,0	60,0	528.563	4.539.234	880,0
314 No	VESTAS	V60-850	850	60,0	60,0	529.397	4.538.612	850,3
315 No	VESTAS	V60-850	850	60,0	60,0	528.446	4.537.806	870,8
316 No	VESTAS	V60-850	850	60,0	60,0	528.693	4.537.592	875,6
317 No	VESTAS	V20-100	100	20,0	23,4	528.786	4.537.734	856,0
318 No	VESTAS	V20-100	100	20,0	23,4	528.805	4.537.645	867,0
319 No	VESTAS	V20-100	100	20,0	23,4	528.866	4.537.591	866,1
320 No	VESTAS	V20-100	100	20,0	23,4	528.967	4.537.605	848,8
321 No	VESTAS	V60-850	850	60,0	60,0	528.895	4.537.446	860,1
322 No	VESTAS	V60-850	850	60,0	60,0	529.860	4.536.551	818,6
323 No	VESTAS	V60-850	850	60,0	60,0	529.944	4.536.434	827,1
324 No	VESTAS	V60-850	850	60,0	60,0	530.024	4.536.380	830,8
325 No	VESTAS	V60-850	850	60,0	60,0	530.161	4.536.319	832,0
326 No	VESTAS	V60-850	850	60,0	60,0	530.146	4.536.816	832,9
327 No	VESTAS	V20-100	100	20,0	60,0	530.451	4.536.307	841,5
328 No	VESTAS	V20-100	100	20,0	23,4	530.675	4.536.817	841,3
329 No	VESTAS	V20-100	100	20,0	23,4	530.696	4.536.962	837,1
330 No	VESTAS	V20-100	100	20,0	23,4	530.797	4.536.987	832,6
331 No	VESTAS	V20-100	100	20,0	23,4	530.889	4.536.941	836,9
332 No	VESTAS	V20-100	100	20,0	23,4	530.797	4.536.823	839,0
333 No	VESTAS	V20-100	100	20,0	23,4	530.884	4.536.697	832,9
334 No	VESTAS	V20-100	100	20,0	23,4	531.050	4.536.570	834,4
335 No	VESTAS	V20-100	100	20,0	23,4	530.991	4.536.423	829,8
336 No	VESTAS	V20-100	100	20,0	23,4	531.171	4.536.503	840,3
337 No	VESTAS	V20-100	100	20,0	23,4	531.167	4.536.417	836,5
338 No	VESTAS	V20-100	100	20,0	23,4	531.111	4.536.323	826,7
339 No	VESTAS	V20-100	100	20,0	23,4	531.364	4.536.299	831,9
340 No	VESTAS	V20-100	100	20,0	23,4	531.527	4.536.297	831,9
341 No	VESTAS	V20-100	100	20,0	23,4	530.965	4.535.957	818,9
342 No	VESTAS	V20-100	100	20,0	23,4	531.093	4.535.925	823,3
343 No	VESTAS	V20-100	100	20,0	23,4	531.253	4.535.866	826,1
344 No	VESTAS	V20-100	100	20,0	23,4	531.395	4.535.753	824,5
345 No	VESTAS	V20-100	100	20,0	23,4	531.543	4.535.752	838,8
346 No	VESTAS	V20-100	100	20,0	23,4	531.584	4.536.152	837,4
347 No	VESTAS	V20-100	100	20,0	23,4	531.669	4.536.060	836,0
348 No	VESTAS	V20-100	100	20,0	23,4	531.589	4.536.037	840,5
349 No	VESTAS	V20-100	100	20,0	23,4	531.584	4.535.915	849,0
350 No	VESTAS	V20-100	100	20,0	23,4	531.692	4.535.880	838,4
351 No	VESTAS	V20-100	100	20,0	23,4	531.752	4.535.810	839,5
352 No	VESTAS	V20-100	100	20,0	23,4	527.299	4.534.539	843,0
353 No	VESTAS	V20-100	100	20,0	23,4	527.362	4.534.524	850,5
354 No	VESTAS	V20-100	100	20,0	23,4	521.562	4.548.446	717,7
355 No	VESTAS	V20-100	100	20,0	23,4	521.864	4.548.126	679,6
356 No	VESTAS	V20-100	100	20,0	23,4	521.743	4.548.324	702,5
357 No	VESTAS	V20-100	100	20,0	23,4	521.781	4.548.233	691,8
358 No	VESTAS	V20-100	100	20,0	23,4	521.797	4.548.387	711,9
359 No	VESTAS	V20-100	100	20,0	23,4	521.612	4.548.601	739,7
360 No	VESTAS	V20-100	100	20,0	23,4	521.534	4.550.033	815,3
361 No	VESTAS	V60-850	850	60,0	60,0	521.610	4.550.083	814,2
362 No	VESTAS	V20-100	100	20,0	23,4	521.386	4.550.240	813,7
363 No	VESTAS	V20-100	100	20,0	23,4	521.530	4.550.308	820,8
364 No	VESTAS	V20-100	100	20,0	23,4	520.993	4.550.746	795,1
365 No	VESTAS	V20-100	100	20,0	23,4	520.935	4.550.762	795,4
366 No	VESTAS	V20-100	100	20,0	23,4	520.869	4.550.798	796,8
367 No	VESTAS	V20-100	100	20,0	23,4	520.834	4.550.831	797,4
368 No	VESTAS	V20-100	100	20,0	23,4	518.694	4.549.869	724,0
369 No	VESTAS	V60-850	850	60,0	60,0	518.742	4.549.898	724,6
370 No	VESTAS	V20-100	100	20,0	23,4	518.734	4.549.952	728,2
371 No	VESTAS	V60-850	850	60,0	60,0	520.613	4.551.560	870,0
372 No	VESTAS	V60-850	850	60,0	60,0	520.578	4.551.656	870,2
373 No	VESTAS	V60-850	850	60,0	60,0	520.550	4.551.758	872,5
374 No	VESTAS	V60-850	850	60,0	60,0	520.523	4.551.842	872,9
375 No	VESTAS	V60-850	850	60,0	60,0	520.404	4.552.017	867,9
376 No	VESTAS	V20-100	100	20,0	23,4	523.039	4.548.564	656,9
377 No	VESTAS	V20-100	100	20,0	23,4	523.089	4.548.519	653,0
378 No	VESTAS	V20-100	100	20,0	23,4	530.478	4.536.475	840,4

ZVI - Angolo orizzontale sotteso



Scala 1:400.000
★ Nuova WTG ★ WTG preesistente

Assunzioni sul calcolo ZVI

Centro del calcolo
 Dimensione X dell'area di calcolo
 Dimensione Y dell'area di calcolo
 Risoluzione del calcolo
 Altezza dell'osservatore
 Area di calcolo
 Punto più alto visibile della WTG
 Ostacoli usati:
 Oggetto DEM
 Nessun Oggetto Aree usato nel calcolo
 Nuove WTG utilizzate nel calcolo
 WTG preesistenti usate nel calcolo

UTM (north)-WGS84 Zone: 33 Est: 526.975 Nord: 4.544.461
 20.000 m
 20.000 m
 25 m
 1,5 m
 40.100 ha
 Altezza mozzo + 1/2 Diametro Rotore
 0
 Project Wizard Elevation Data Grid (SRTM: Shuttle DTM 1 arc-second)

5
 373

Nessuna distanza massima dalla WTG

Risultati ZVI

Angolo orizzontale sotteso [gradi]	Area [ha]	Area [%]
0,0 - <5,0	6591	16,4
5,0 - <15,0	983	2,5
15,0 - <30,0	1706	4,3
30,0 - <60,0	4649	11,6
60,0 - <120,0	7143	17,8
120,0 - <=180,0	19028	47,5

WTG

Valida	Produttore	Tipo generatore	Potenza nominale [kW]	Diametro rotore [m]	Altezza mozzo [m]	Easting	Northing	Z [m]
1	No	VESTAS V112-3.000	3.000	112,0	84,0	527.330	4.551.112	724,8
2	No	VESTAS V112-3.000	3.000	112,0	84,0	526.952	4.548.908	607,4
3	No	VESTAS V112-3.000	3.000	112,0	84,0	527.251	4.548.989	603,3
4	No	VESTAS V112-3.000	3.000	112,0	84,0	527.565	4.548.871	599,0
5	No	VESTAS V112-3.000	3.000	112,0	84,0	528.672	4.548.901	537,3
6	No	VESTAS V112-3.000	3.000	112,0	84,0	528.992	4.548.827	543,6
7	No	VESTAS V112-3.000	3.000	112,0	84,0	529.313	4.548.680	524,9
8	No	VESTAS V112-3.000	3.000	112,0	84,0	529.576	4.548.488	494,3
9	No	VESTAS V112-3.000	3.000	112,0	84,0	528.176	4.547.919	518,6
10	No	VESTAS V112-3.000	3.000	112,0	84,0	527.966	4.547.487	502,2
11	No	VESTAS V112-3.000	3.000	112,0	84,0	527.525	4.547.568	561,7
12	No	VESTAS V112-3.000	3.000	112,0	84,0	527.148	4.547.573	586,1
13	No	VESTAS V112-3.000	3.000	112,0	84,0	526.700	4.547.422	593,3
14	No	VESTAS V112-3.000	3.000	112,0	84,0	526.547	4.547.570	601,8
15	No	VESTAS V112-3.000	3.000	112,0	84,0	526.253	4.547.665	646,9
16	No	VESTAS V112-3.000	3.000	112,0	84,0	525.774	4.547.816	693,4
17	No	VESTAS V112-3.000	3.000	112,0	84,0	530.334	4.546.908	548,2
18	No	VESTAS V112-3.000	3.000	112,0	84,0	530.095	4.546.043	648,6
19	No	VESTAS V112-3.000	3.000	112,0	84,0	529.566	4.545.807	665,4
20	No	VESTAS V112-3.000	3.000	112,0	84,0	529.833	4.545.507	686,6
21	No	VESTAS V112-3.000	3.000	112,0	84,0	528.976	4.545.081	642,2
22	No	VESTAS V112-3.000	3.000	112,0	84,0	530.701	4.545.490	590,1
23	No	VESTAS V112-3.000	3.000	112,0	84,0	531.090	4.545.656	562,2
24	No	VESTAS V112-3.000	3.000	112,0	84,0	531.822	4.547.750	506,9
25	No	VESTAS V112-3.000	3.000	112,0	84,0	531.968	4.547.983	496,5
26	No	VESTAS V112-3.000	3.000	112,0	84,0	532.174	4.547.776	539,3
27	No	VESTAS V112-3.000	3.000	112,0	84,0	532.362	4.547.429	527,8

continua alla pagina successiva...

ZVI - Angolo orizzontale sotteso

...continua dalla pagina precedente

Valida	Produttore	Tipo generatore	Potenza nominale [kW]	Diametro rotore [m]	Altezza mozzo [m]	Easting	Northing	Z [m]
28 No	VESTAS	V112-3.000	3.000	112,0	84,0	532.449	4.547.210	551,4
29 No	VESTAS	V112-3.000	3.000	112,0	84,0	532.835	4.547.279	600,4
30 No	VESTAS	V112-3.000	3.000	112,0	84,0	529.777	4.543.870	724,1
31 No	VESTAS	V112-3.000	3.000	112,0	84,0	529.590	4.543.384	724,0
32 No	VESTAS	V112-3.000	3.000	112,0	84,0	529.601	4.542.885	767,2
33 No	VESTAS	V112-3.000	3.000	112,0	84,0	529.329	4.542.956	743,1
34 No	VESTAS	V112-3.000	3.000	112,0	84,0	529.813	4.542.490	798,8
35 No	VESTAS	V112-3.000	3.000	112,0	84,0	524.520	4.540.745	742,3
36 No	VESTAS	V112-3.000	3.000	112,0	84,0	524.668	4.540.962	770,6
37 No	VESTAS	V112-3.000	3.000	112,0	84,0	524.445	4.540.989	735,5
38 No	VESTAS	V112-3.000	3.000	112,0	84,0	524.488	4.541.352	765,3
39 No	VESTAS	V112-3.000	3.000	112,0	84,0	524.422	4.541.565	737,1
40 No	VESTAS	V112-3.000	3.000	112,0	84,0	524.325	4.541.199	766,3
41 No	VESTAS	V112-3.000	3.000	112,0	84,0	524.018	4.541.056	721,8
42 No	VESTAS	V112-3.000	3.000	112,0	84,0	524.016	4.541.282	715,6
43 No	VESTAS	V112-3.000	3.000	112,0	84,0	524.026	4.541.507	695,5
44 No	VESTAS	V112-3.000	3.000	112,0	84,0	525.437	4.541.787	769,1
45 No	VESTAS	V112-3.000	3.000	112,0	84,0	525.590	4.541.633	781,9
46 No	VESTAS	V112-3.000	3.000	112,0	84,0	525.764	4.541.507	803,7
47 No	VESTAS	V112-3.000	3.000	112,0	84,0	525.414	4.540.393	803,2
48 No	VESTAS	V112-3.000	3.000	112,0	84,0	524.544	4.538.534	766,9
49 No	VESTAS	V112-3.000	3.000	112,0	84,0	525.099	4.538.711	840,5
50 No	VESTAS	V112-3.000	3.000	112,0	84,0	525.209	4.539.015	844,3
51 No	VESTAS	V112-3.000	3.000	112,0	84,0	525.089	4.539.425	805,1
52 No	VESTAS	V112-3.000	3.000	112,0	84,0	524.940	4.539.621	776,1
53 No	VESTAS	V112-3.000	3.000	112,0	84,0	525.382	4.539.365	842,4
54 No	VESTAS	V112-3.000	3.000	112,0	84,0	525.649	4.539.208	877,6
55 No	VESTAS	V112-3.000	3.000	112,0	84,0	525.517	4.538.839	869,2
56 No	VESTAS	V112-3.000	3.000	112,0	84,0	525.897	4.538.117	876,0
57 No	VESTAS	V112-3.000	3.000	112,0	84,0	525.899	4.538.401	874,7
58 No	VESTAS	V112-3.000	3.000	112,0	84,0	526.240	4.538.518	890,8
59 No	VESTAS	V112-3.000	3.000	112,0	84,0	526.481	4.538.474	898,8
60 No	VESTAS	V112-3.000	3.000	112,0	84,0	526.014	4.538.682	886,4
61 No	VESTAS	V112-3.000	3.000	112,0	84,0	525.939	4.538.979	892,1
62 No	VESTAS	V112-3.000	3.000	112,0	84,0	525.916	4.539.216	892,0
63 No	VESTAS	V112-3.000	3.000	112,0	84,0	525.828	4.539.485	880,6
64 No	VESTAS	V112-3.000	3.000	112,0	84,0	525.712	4.539.693	842,2
65 No	VESTAS	V112-3.000	3.000	112,0	84,0	526.184	4.539.727	846,7
66 No	VESTAS	V112-3.000	3.000	112,0	84,0	526.370	4.539.552	867,2
67 No	VESTAS	V112-3.000	3.000	112,0	84,0	526.346	4.539.078	880,5
68 No	VESTAS	V112-3.000	3.000	112,0	84,0	526.629	4.538.820	904,3
69 No	VESTAS	V112-3.000	3.000	112,0	84,0	526.804	4.538.379	924,0
70 No	VESTAS	V112-3.000	3.000	112,0	84,0	526.945	4.538.071	931,5
71 No	VESTAS	V47-660/200	660	47,0	50,0	527.054	4.540.094	877,8
72 No	VESTAS	V112-3.000	3.000	112,0	84,0	527.358	4.540.089	857,7
73 No	VESTAS	V47-660/200	660	47,0	50,0	527.001	4.539.628	887,7
74 No	VESTAS	V47-660/200	660	47,0	50,0	527.056	4.539.488	903,5
75 No	VESTAS	V47-660/200	660	47,0	50,0	527.101	4.539.358	912,2
76 No	VESTAS	V47-660/200	660	47,0	50,0	527.152	4.539.231	923,5
77 No	VESTAS	V47-660/200	660	47,0	50,0	527.196	4.539.136	931,6
78 No	VESTAS	V47-660/200	660	47,0	50,0	527.243	4.539.001	943,7
79 No	VESTAS	V47-660/200	660	47,0	50,0	527.299	4.538.849	955,1
80 No	VESTAS	V112-3.000	3.000	112,0	84,0	527.647	4.538.752	933,2
81 No	VESTAS	V112-3.000	3.000	112,0	84,0	527.042	4.538.413	951,5
82 No	VESTAS	V112-3.000	3.000	112,0	84,0	527.174	4.538.249	956,9
83 No	VESTAS	V112-3.000	3.000	112,0	84,0	527.794	4.538.329	938,0
84 No	VESTAS	V112-3.000	3.000	112,0	84,0	527.992	4.538.588	903,3
85 No	VESTAS	V47-660/200	660	47,0	50,0	529.024	4.539.396	884,0
86 No	VESTAS	V47-660/200	660	47,0	50,0	528.873	4.539.514	892,6
87 No	VESTAS	V47-660/200	660	47,0	50,0	528.664	4.539.604	893,4
88 No	VESTAS	V47-660/200	660	47,0	50,0	528.612	4.539.725	892,0
89 No	VESTAS	V47-660/200	660	47,0	50,0	528.522	4.539.821	886,5
90 No	VESTAS	V47-660/200	660	47,0	50,0	528.394	4.539.891	877,2
91 No	VESTAS	V47-660/200	660	47,0	50,0	528.353	4.540.135	853,3
92 No	VESTAS	V47-660/200	660	47,0	50,0	528.255	4.540.222	845,9
93 No	VESTAS	V47-660/200	660	47,0	50,0	528.250	4.540.408	845,9
94 No	VESTAS	V47-660/200	660	47,0	50,0	528.252	4.540.520	853,4
95 No	VESTAS	V47-660/200	660	47,0	50,0	528.205	4.540.684	874,9
96 No	VESTAS	V47-660/200	660	47,0	50,0	528.180	4.540.762	875,8
97 No	VESTAS	V47-660/200	660	47,0	50,0	528.127	4.540.913	876,9

continua alla pagina successiva...

ZVI - Angolo orizzontale sotteso

... continua dalla pagina precedente

Valida	Produttore	Tipo generatore	Potenza nominale [kW]	Diametro rotore [m]	Altezza mozzo [m]	Easting	Northing	Z [m]
98 No	VESTAS	V47-660/200	660	47,0	50,0	528.045	4.541.013	867,3
99 No	VESTAS	V47-660/200	660	47,0	50,0	527.993	4.541.108	858,8
100 No	VESTAS	V47-660/200	660	47,0	50,0	527.981	4.541.228	843,2
101 No	VESTAS	V47-660/200	660	47,0	50,0	527.992	4.541.407	843,7
102 No	VESTAS	V47-660/200	660	47,0	50,0	527.923	4.541.524	844,0
103 No	VESTAS	V47-660/200	660	47,0	50,0	527.857	4.541.615	845,9
104 No	VESTAS	V47-660/200	660	47,0	50,0	527.785	4.541.708	840,0
105 No	VESTAS	V47-660/200	660	47,0	50,0	527.673	4.541.806	828,8
106 No	VESTAS	V47-660/200	660	47,0	50,0	527.625	4.541.865	828,1
107 No	VESTAS	V47-660/200	660	47,0	50,0	527.551	4.541.929	829,9
108 No	VESTAS	V47-660/200	660	47,0	50,0	527.445	4.542.007	823,0
109 No	VESTAS	V47-660/200	660	47,0	50,0	527.363	4.542.108	826,2
110 No	VESTAS	V47-660/200	660	47,0	50,0	527.297	4.542.202	827,9
111 No	VESTAS	V47-660/200	660	47,0	50,0	527.197	4.542.289	815,7
112 No	VESTAS	V112-3.000	3.000	112,0	84,0	527.020	4.537.278	887,4
113 No	VESTAS	V112-3.000	3.000	112,0	84,0	526.967	4.537.059	887,1
114 No	VESTAS	V112-3.000	3.000	112,0	84,0	527.043	4.536.839	878,9
115 No	VESTAS	V112-3.000	3.000	112,0	84,0	527.228	4.536.630	871,1
116 No	VESTAS	V112-3.000	3.000	112,0	84,0	527.512	4.536.452	861,0
117 No	VESTAS	V112-3.000	3.000	112,0	84,0	527.845	4.536.125	854,4
118 No	VESTAS	V112-3.000	3.000	112,0	84,0	528.292	4.536.021	854,7
119 No	VESTAS	V112-3.000	3.000	112,0	84,0	528.488	4.535.853	839,2
120 No	VESTAS	V112-3.000	3.000	112,0	84,0	527.912	4.536.672	853,3
121 No	VESTAS	V112-3.000	3.000	112,0	84,0	527.898	4.537.032	878,4
122 No	VESTAS	V112-3.000	3.000	112,0	84,0	527.373	4.537.287	889,4
123 No	VESTAS	V112-3.000	3.000	112,0	84,0	527.922	4.537.316	898,2
124 No	VESTAS	V112-3.000	3.000	112,0	84,0	527.895	4.537.572	918,6
125 No	VESTAS	V112-3.000	3.000	112,0	84,0	527.749	4.537.767	927,1
126 No	VESTAS	V112-3.000	3.000	112,0	84,0	529.154	4.537.459	834,1
127 No	VESTAS	V112-3.000	3.000	112,0	84,0	529.654	4.536.879	821,1
128 No	VESTAS	V112-3.000	3.000	112,0	84,0	528.904	4.536.178	846,2
129 No	VESTAS	V112-3.000	3.000	112,0	84,0	530.416	4.536.656	843,5
130 No	VESTAS	V112-3.000	3.000	112,0	84,0	530.642	4.536.304	830,7
131 No	VESTAS	V47-660/200	660	47,0	50,0	531.076	4.536.787	844,9
132 No	VESTAS	V47-660/200	660	47,0	50,0	531.211	4.536.706	845,6
133 No	VESTAS	V47-660/200	660	47,0	50,0	531.352	4.536.553	838,8
134 No	VESTAS	V47-660/200	660	47,0	50,0	531.441	4.536.474	831,9
135 No	VESTAS	V47-660/200	660	47,0	50,0	531.349	4.536.050	839,0
136 No	VESTAS	V112-3.000	3.000	112,0	84,0	525.193	4.535.869	844,9
137 No	VESTAS	V112-3.000	3.000	112,0	84,0	525.171	4.536.105	861,7
138 No	VESTAS	V112-3.000	3.000	112,0	84,0	525.267	4.536.379	857,4
139 No	VESTAS	V112-3.000	3.000	112,0	84,0	525.271	4.536.661	853,8
140 No	VESTAS	V112-3.000	3.000	112,0	84,0	525.735	4.536.546	831,6
141 No	VESTAS	V112-3.000	3.000	112,0	84,0	526.003	4.536.158	841,1
142 No	VESTAS	V112-3.000	3.000	112,0	84,0	526.284	4.535.970	861,2
143 No	VESTAS	V112-3.000	3.000	112,0	84,0	526.479	4.535.743	882,9
144 No	VESTAS	V112-3.000	3.000	112,0	84,0	526.843	4.535.600	860,9
145 No	VESTAS	V112-3.000	3.000	112,0	84,0	527.203	4.535.593	846,6
146 No	VESTAS	V112-3.000	3.000	112,0	84,0	526.467	4.535.554	885,3
147 No	VESTAS	V112-3.000	3.000	112,0	84,0	526.538	4.535.461	882,9
148 No	VESTAS	V112-3.000	3.000	112,0	84,0	526.597	4.535.373	881,4
149 No	VESTAS	V112-3.000	3.000	112,0	84,0	526.680	4.535.270	874,4
150 No	VESTAS	V112-3.000	3.000	112,0	84,0	526.768	4.535.176	861,1
151 No	VESTAS	V112-3.000	3.000	112,0	84,0	527.522	4.535.488	840,7
152 No	VESTAS	V112-3.000	3.000	112,0	84,0	527.506	4.535.126	845,0
153 No	VESTAS	V112-3.000	3.000	112,0	84,0	527.592	4.534.892	853,0
154 No	VESTAS	V112-3.000	3.000	112,0	84,0	527.770	4.534.732	862,3
155 No	VESTAS	V112-3.000	3.000	112,0	84,0	527.952	4.534.580	868,3
156 No	VESTAS	V112-3.000	3.000	112,0	84,0	528.225	4.535.185	840,2
157 No	VESTAS	V112-3.000	3.000	112,0	84,0	528.388	4.534.681	868,5
158 No	VESTAS	V112-3.000	3.000	112,0	84,0	528.776	4.534.729	845,4
159 No	VESTAS	V112-3.000	3.000	112,0	84,0	528.735	4.535.101	845,5
160 No	VESTAS	V112-3.000	3.000	112,0	84,0	528.699	4.535.306	841,0
161 No	VESTAS	V112-3.000	3.000	112,0	84,0	521.946	4.548.418	706,0
162 No	VESTAS	V112-3.000	3.000	112,0	84,0	521.817	4.548.602	737,5
163 No	VESTAS	V112-3.000	3.000	112,0	84,0	521.639	4.548.787	756,8
164 No	VESTAS	V112-3.000	3.000	112,0	84,0	521.318	4.548.994	791,7
165 No	VESTAS	V112-3.000	3.000	112,0	84,0	521.616	4.549.089	791,3
166 No	VESTAS	V112-3.000	3.000	112,0	84,0	521.190	4.549.175	788,7
167 No	VESTAS	V112-3.000	3.000	112,0	84,0	521.617	4.549.328	812,9

continua alla pagina successiva...

ZVI - Angolo orizzontale sotteso

... continua dalla pagina precedente

Valida	Produttore	Tipo generatore	Potenza nominale [kW]	Diametro rotore [m]	Altezza mozzo [m]	Easting	Northing	Z [m]	
168	No	VESTAS	V112-3.000	3.000	112,0	84,0	521.394	4.549.512	823,7
169	No	VESTAS	V112-3.000	3.000	112,0	84,0	521.679	4.549.622	801,3
170	No	VESTAS	V112-3.000	3.000	112,0	84,0	521.587	4.549.815	810,1
171	No	VESTAS	V112-3.000	3.000	112,0	84,0	519.713	4.549.948	712,3
172	No	VESTAS	V112-3.000	3.000	112,0	84,0	519.724	4.550.100	736,7
173	No	VESTAS	V112-3.000	3.000	112,0	84,0	519.711	4.550.239	749,8
174	No	VESTAS	V112-3.000	3.000	112,0	84,0	519.696	4.550.340	758,2
175	No	VESTAS	V112-3.000	3.000	112,0	84,0	519.535	4.550.440	757,4
176	No	VESTAS	V112-3.000	3.000	112,0	84,0	519.610	4.550.473	778,2
177	No	VESTAS	V112-3.000	3.000	112,0	84,0	519.685	4.550.544	791,5
178	No	VESTAS	V112-3.000	3.000	112,0	84,0	522.181	4.549.453	760,5
179	No	VESTAS	V112-3.000	3.000	112,0	84,0	522.410	4.549.322	738,2
180	No	VESTAS	V112-3.000	3.000	112,0	84,0	522.558	4.549.212	723,8
181	No	VESTAS	V112-3.000	3.000	112,0	84,0	522.676	4.549.096	709,1
182	No	VESTAS	V112-3.000	3.000	112,0	84,0	522.814	4.548.972	693,0
183	No	VESTAS	V112-3.000	3.000	112,0	84,0	522.848	4.550.874	863,8
184	No	VESTAS	V112-3.000	3.000	112,0	84,0	522.723	4.550.950	864,9
185	No	VESTAS	V112-3.000	3.000	112,0	84,0	522.677	4.551.027	864,2
186	No	VESTAS	V112-3.000	3.000	112,0	84,0	522.637	4.551.121	864,8
187	No	VESTAS	V112-3.000	3.000	112,0	84,0	522.630	4.551.218	867,7
188	No	VESTAS	V112-3.000	3.000	112,0	84,0	522.665	4.551.370	862,3
189	No	VESTAS	V112-3.000	3.000	112,0	84,0	522.709	4.551.475	868,1
190	No	VESTAS	V112-3.000	3.000	112,0	84,0	522.740	4.551.567	874,5
191	No	VESTAS	V112-3.000	3.000	112,0	84,0	522.792	4.551.670	886,1
192	No	VESTAS	V112-3.000	3.000	112,0	84,0	523.248	4.551.613	874,4
193	No	VESTAS	V112-3.000	3.000	112,0	84,0	523.287	4.551.531	866,6
194	No	VESTAS	V112-3.000	3.000	112,0	84,0	523.322	4.551.452	861,3
195	No	VESTAS	V112-3.000	3.000	112,0	84,0	522.969	4.552.267	934,8
196	No	VESTAS	V112-3.000	3.000	112,0	84,0	522.923	4.552.352	937,0
197	No	VESTAS	V112-3.000	3.000	112,0	84,0	522.913	4.552.451	942,1
198	No	VESTAS	V112-3.000	3.000	112,0	84,0	522.891	4.552.533	942,9
199	No	VESTAS	V112-3.000	3.000	112,0	84,0	522.791	4.552.607	942,7
200	No	VESTAS	V112-3.000	3.000	112,0	84,0	522.778	4.552.710	937,7
201	No	VESTAS	V112-3.000	3.000	112,0	84,0	522.700	4.552.840	929,0
202	No	VESTAS	V112-3.000	3.000	112,0	84,0	522.637	4.552.907	935,1
203	No	VESTAS	V112-3.000	3.000	112,0	84,0	522.568	4.553.029	958,2
204	No	VESTAS	V112-3.000	3.000	112,0	84,0	522.496	4.553.096	972,7
205	No	VESTAS	V112-3.000	3.000	112,0	84,0	522.464	4.553.206	983,8
206	No	VESTAS	V112-3.000	3.000	112,0	84,0	522.467	4.553.315	980,3
207	No	VESTAS	V112-3.000	3.000	112,0	84,0	524.072	4.553.538	902,1
208	No	VESTAS	V112-3.000	3.000	112,0	84,0	524.111	4.553.627	907,5
209	No	VESTAS	V112-3.000	3.000	112,0	84,0	524.467	4.553.765	900,9
210	No	VESTAS	V112-3.000	3.000	112,0	84,0	524.495	4.553.918	882,9
211	No	VESTAS	V112-3.000	3.000	112,0	84,0	525.224	4.553.461	904,7
212	No	VESTAS	V112-3.000	3.000	112,0	84,0	525.303	4.553.399	896,6
213	No	VESTAS	V112-3.000	3.000	112,0	84,0	525.319	4.553.297	892,0
214	No	VESTAS	V112-3.000	3.000	112,0	84,0	525.376	4.553.246	888,5
215	No	VESTAS	V112-3.000	3.000	112,0	84,0	525.486	4.553.170	875,8
216	No	VESTAS	V112-3.000	3.000	112,0	84,0	525.557	4.553.092	880,1
217	No	VESTAS	V112-3.000	3.000	112,0	84,0	525.778	4.553.074	866,3
218	No	VESTAS	V112-3.000	3.000	112,0	84,0	525.948	4.552.988	845,5
219	No	VESTAS	V112-3.000	3.000	112,0	84,0	526.090	4.552.776	829,7
220	No	VESTAS	V112-3.000	3.000	112,0	84,0	526.119	4.552.683	827,2
221	No	VESTAS	V112-3.000	3.000	112,0	84,0	526.134	4.552.584	827,1
222	No	VESTAS	V112-3.000	3.000	112,0	84,0	526.151	4.552.482	829,4
223	No	VESTAS	V112-3.000	3.000	112,0	84,0	526.200	4.552.400	824,1
224	No	VESTAS	V112-3.000	3.000	112,0	84,0	526.267	4.552.326	818,7
225	No	VESTAS	V112-3.000	3.000	112,0	84,0	526.263	4.552.223	816,8
226	No	VESTAS	V112-3.000	3.000	112,0	84,0	526.382	4.552.101	808,5
227	No	VESTAS	V112-3.000	3.000	112,0	84,0	526.442	4.552.017	817,3
228	No	VESTAS	V112-3.000	3.000	112,0	84,0	526.500	4.551.937	817,4
229	No	VESTAS	V112-3.000	3.000	112,0	84,0	526.578	4.551.870	821,2
230	No	VESTAS	V112-3.000	3.000	112,0	84,0	526.643	4.551.828	819,0
231	No	VESTAS	V112-3.000	3.000	112,0	84,0	526.740	4.551.759	809,6
232	No	VESTAS	V112-3.000	3.000	112,0	84,0	526.817	4.551.705	802,5
233	No	VESTAS	V112-3.000	3.000	112,0	84,0	527.220	4.551.450	750,0
234	No	VESTAS	V112-3.000	3.000	112,0	84,0	527.272	4.551.362	749,5
235	No	VESTAS	V112-3.000	3.000	112,0	84,0	527.330	4.551.112	724,8
236	No	VESTAS	V112-3.000	3.000	112,0	84,0	527.331	4.550.991	716,1
237	No	VESTAS	V112-3.000	3.000	112,0	84,0	527.294	4.550.848	717,1

continua alla pagina successiva...

ZVI - Angolo orizzontale sotteso

... continua dalla pagina precedente

Valida	Produttore	Tipo generatore	Potenza nominale [kW]	Diametro rotore [m]	Altezza mozzo [m]	Easting	Northing	Z [m]	
238	No	VESTAS	V112-3.000	3.000	112,0	84,0	526.101	4.553.594	775,7
239	No	VESTAS	V112-3.000	3.000	112,0	84,0	526.335	4.553.656	759,5
240	No	VESTAS	V112-3.000	3.000	112,0	84,0	526.432	4.553.206	773,4
241	No	VESTAS	V112-3.000	3.000	112,0	84,0	526.887	4.553.197	735,7
242	No	VESTAS	V112-3.000	3.000	112,0	84,0	526.805	4.553.412	733,9
243	No	VESTAS	V112-3.000	3.000	112,0	84,0	527.209	4.553.816	652,7
244	No	VESTAS	V112-3.000	3.000	112,0	84,0	527.747	4.552.934	642,9
245	No	VESTAS	V112-3.000	3.000	112,0	84,0	528.253	4.553.503	594,8
246	No	VESTAS	V112-3.000	3.000	112,0	84,0	528.421	4.553.258	599,1
247	No	VESTAS	V112-3.000	3.000	112,0	84,0	528.534	4.553.059	600,0
248	No	VESTAS	V112-3.000	3.000	112,0	84,0	528.717	4.552.930	596,2
249	No	VESTAS	V112-3.000	3.000	112,0	84,0	528.881	4.553.066	587,5
250	No	VESTAS	V112-3.000	3.000	112,0	84,0	528.860	4.552.687	598,5
251	No	VESTAS	V112-3.000	3.000	112,0	84,0	529.153	4.552.842	589,7
252	No	VESTAS	V112-3.000	3.000	112,0	84,0	529.038	4.552.431	608,6
253	No	VESTAS	V112-3.000	3.000	112,0	84,0	528.727	4.552.338	614,6
254	No	VESTAS	V112-3.000	3.000	112,0	84,0	529.126	4.552.217	602,6
255	No	VESTAS	V112-3.000	3.000	112,0	84,0	528.858	4.552.054	606,4
256	No	VESTAS	V112-3.000	3.000	112,0	84,0	530.047	4.552.124	599,0
257	No	VESTAS	V112-3.000	3.000	112,0	84,0	529.770	4.551.931	602,8
258	No	VESTAS	V112-3.000	3.000	112,0	84,0	529.607	4.551.670	599,5
259	No	VESTAS	V112-3.000	3.000	112,0	84,0	529.350	4.551.431	606,4
260	No	VESTAS	V112-3.000	3.000	112,0	84,0	529.313	4.551.222	605,7
261	No	VESTAS	V112-3.000	3.000	112,0	84,0	529.489	4.551.088	596,6
262	No	VESTAS	V112-3.000	3.000	112,0	84,0	529.846	4.551.041	564,9
263	No	VESTAS	V112-3.000	3.000	112,0	84,0	529.866	4.550.742	564,9
264	No	VESTAS	V112-3.000	3.000	112,0	84,0	529.800	4.550.278	566,0
265	No	VESTAS	V112-3.000	3.000	112,0	84,0	530.017	4.550.175	559,8
266	No	VESTAS	V112-3.000	3.000	112,0	84,0	530.225	4.550.060	557,4
267	No	VESTAS	V112-3.000	3.000	112,0	84,0	530.428	4.549.949	550,4
268	No	VESTAS	V112-3.000	3.000	112,0	84,0	530.690	4.549.775	543,3
269	No	VESTAS	V112-3.000	3.000	112,0	84,0	530.802	4.550.128	534,6
270	No	VESTAS	V112-3.000	3.000	112,0	84,0	530.603	4.550.796	533,5
271	No	VESTAS	V112-3.000	3.000	112,0	84,0	530.397	4.550.891	542,9
272	No	VESTAS	V112-3.000	3.000	112,0	84,0	530.876	4.551.377	521,1
273	No	VESTAS	V112-3.000	3.000	112,0	84,0	531.888	4.550.643	513,1
274	No	VESTAS	V112-3.000	3.000	112,0	84,0	532.159	4.550.604	488,2
275	No	VESTAS	-7.200	7.200	172,0	117,0	527.402	4.544.764	669,6
276	No	VESTAS	-7.200	7.200	172,0	117,0	527.913	4.545.010	547,6
277	No	VESTAS	-7.200	7.200	172,0	117,0	526.893	4.545.186	620,5
278	No	VESTAS	-7.200	7.200	172,0	117,0	526.145	4.545.163	572,8
279	No	VESTAS	-7.200	7.200	172,0	117,0	527.649	4.544.157	645,6
280	No	VESTAS	V60-850	850	60,0	60,0	526.262	4.543.123	757,6
281	No	VESTAS	V20-100	100	20,0	23,4	525.654	4.543.103	739,1
282	No	VESTAS	V20-100	100	20,0	23,4	525.448	4.543.079	730,2
283	No	VESTAS	V20-100	100	20,0	23,4	525.145	4.543.345	756,4
284	No	VESTAS	V60-850	850	60,0	60,0	524.974	4.543.221	736,3
285	No	VESTAS	V60-850	850	60,0	60,0	526.396	4.548.572	648,6
286	No	VESTAS	V60-850	850	60,0	60,0	528.081	4.548.736	578,6
287	No	VESTAS	V20-100	100	20,0	23,4	527.855	4.548.664	593,6
288	No	VESTAS	V20-100	100	20,0	23,4	527.901	4.548.597	594,1
289	No	VESTAS	V20-100	100	20,0	23,4	528.022	4.548.517	588,2
290	No	VESTAS	V20-100	100	20,0	23,4	525.472	4.547.298	673,3
291	No	VESTAS	V60-850	850	60,0	60,0	529.543	4.543.138	746,3
292	No	VESTAS	V60-850	850	60,0	60,0	529.477	4.542.157	799,0
293	No	VESTAS	V20-100	100	20,0	23,4	525.603	4.541.389	803,0
294	No	VESTAS	V20-100	100	20,0	23,4	525.909	4.541.402	810,6
295	No	VESTAS	V20-100	100	20,0	23,4	525.819	4.541.253	808,8
296	No	VESTAS	V112-3.000	3.000	112,0	84,0	527.303	4.538.623	979,3
297	No	VESTAS	V20-100	100	20,0	23,4	527.184	4.538.538	966,3
298	No	VESTAS	V112-3.000	3.000	112,0	84,0	527.339	4.538.355	980,1
299	No	VESTAS	V112-3.000	3.000	112,0	84,0	527.426	4.538.137	963,0
300	No	VESTAS	V112-3.000	3.000	112,0	84,0	527.535	4.537.902	940,2
301	No	VESTAS	V20-100	100	20,0	23,4	526.987	4.538.602	950,0
302	No	VESTAS	V20-100	100	20,0	23,4	528.234	4.538.222	913,2
303	No	VESTAS	V20-100	100	20,0	23,4	528.484	4.538.295	893,0
304	No	VESTAS	V20-100	100	20,0	23,4	528.548	4.538.454	901,3
305	No	VESTAS	V20-100	100	20,0	23,4	528.660	4.538.505	896,5
306	No	VESTAS	V20-100	100	20,0	23,4	528.580	4.538.574	898,9
307	No	VESTAS	V20-100	100	20,0	23,4	528.657	4.538.791	888,6

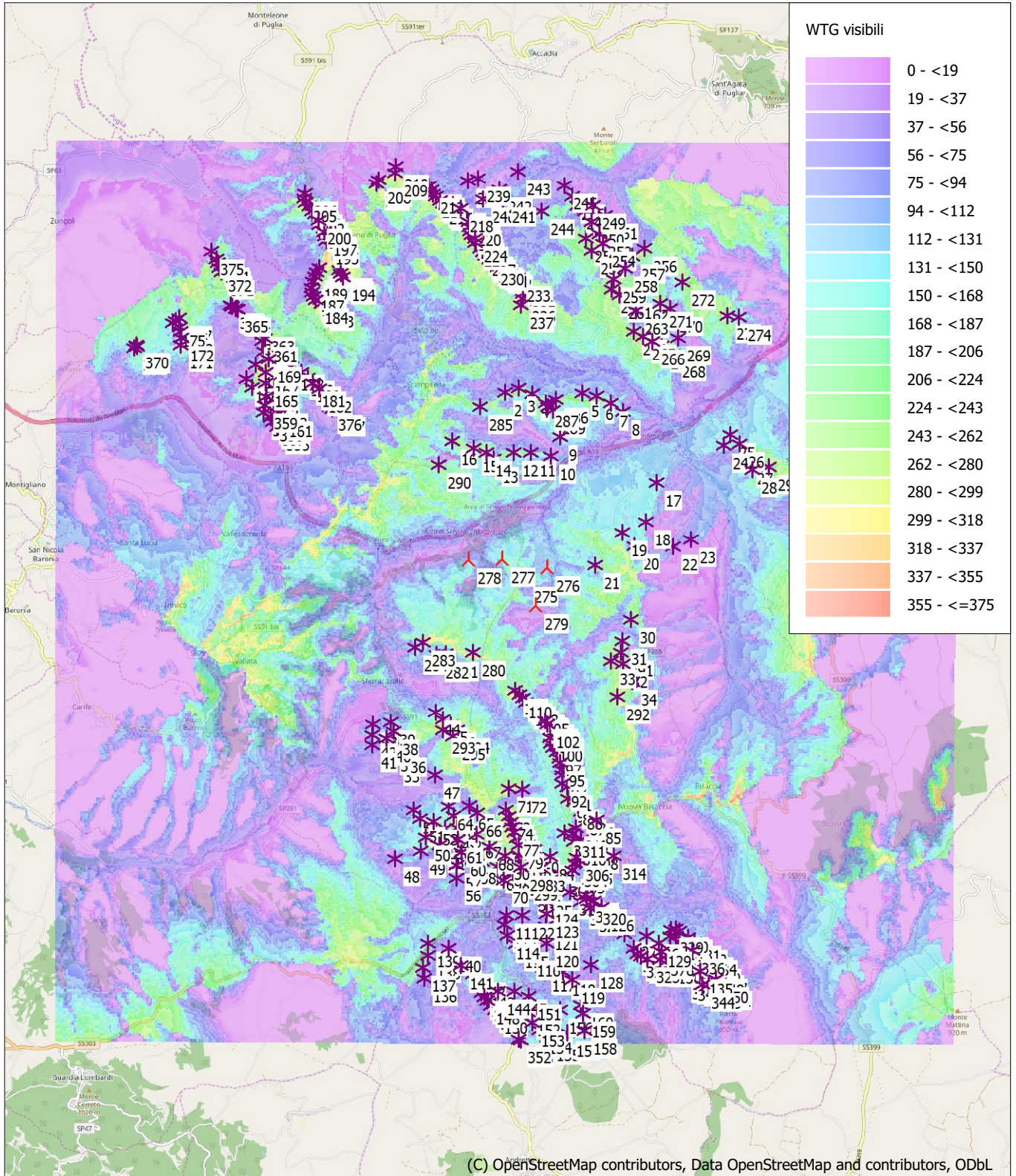
continua alla pagina successiva...

ZVI - Angolo orizzontale sotteso

... continua dalla pagina precedente

Valida	Produttore	Tipo generatore	Potenza nominale [kW]	Diametro rotore [m]	Altezza mozzo [m]	Easting	Northing	Z [m]
308	No	VESTAS V20-100	100	20,0	23,4	528.776	4.538.845	891,0
309	No	VESTAS V60-850	850	60,0	60,0	528.679	4.538.972	884,5
310	No	VESTAS V60-850	850	60,0	60,0	528.519	4.538.919	891,2
311	No	VESTAS V60-850	850	60,0	60,0	528.493	4.539.091	886,3
312	No	VESTAS V60-850	850	60,0	60,0	528.310	4.539.109	872,4
313	No	VESTAS V60-850	850	60,0	60,0	528.563	4.539.234	880,0
314	No	VESTAS V60-850	850	60,0	60,0	529.397	4.538.612	850,3
315	No	VESTAS V60-850	850	60,0	60,0	528.446	4.537.806	870,8
316	No	VESTAS V60-850	850	60,0	60,0	528.693	4.537.592	875,6
317	No	VESTAS V20-100	100	20,0	23,4	528.786	4.537.734	856,0
318	No	VESTAS V20-100	100	20,0	23,4	528.805	4.537.645	867,0
319	No	VESTAS V20-100	100	20,0	23,4	528.866	4.537.591	866,1
320	No	VESTAS V20-100	100	20,0	23,4	528.967	4.537.605	848,8
321	No	VESTAS V60-850	850	60,0	60,0	528.895	4.537.446	860,1
322	No	VESTAS V60-850	850	60,0	60,0	529.860	4.536.551	818,6
323	No	VESTAS V60-850	850	60,0	60,0	529.944	4.536.434	827,1
324	No	VESTAS V60-850	850	60,0	60,0	530.024	4.536.380	830,8
325	No	VESTAS V60-850	850	60,0	60,0	530.161	4.536.319	832,0
326	No	VESTAS V60-850	850	60,0	60,0	530.146	4.536.816	832,9
327	No	VESTAS V20-100	100	20,0	60,0	530.451	4.536.307	841,5
328	No	VESTAS V20-100	100	20,0	23,4	530.675	4.536.817	841,3
329	No	VESTAS V20-100	100	20,0	23,4	530.696	4.536.962	837,1
330	No	VESTAS V20-100	100	20,0	23,4	530.797	4.536.987	832,6
331	No	VESTAS V20-100	100	20,0	23,4	530.889	4.536.941	836,9
332	No	VESTAS V20-100	100	20,0	23,4	530.797	4.536.823	839,0
333	No	VESTAS V20-100	100	20,0	23,4	530.884	4.536.697	832,9
334	No	VESTAS V20-100	100	20,0	23,4	531.050	4.536.570	834,4
335	No	VESTAS V20-100	100	20,0	23,4	530.991	4.536.423	829,8
336	No	VESTAS V20-100	100	20,0	23,4	531.171	4.536.503	840,3
337	No	VESTAS V20-100	100	20,0	23,4	531.167	4.536.417	836,5
338	No	VESTAS V20-100	100	20,0	23,4	531.111	4.536.323	826,7
339	No	VESTAS V20-100	100	20,0	23,4	531.364	4.536.299	831,9
340	No	VESTAS V20-100	100	20,0	23,4	531.527	4.536.297	831,9
341	No	VESTAS V20-100	100	20,0	23,4	530.965	4.535.957	818,9
342	No	VESTAS V20-100	100	20,0	23,4	531.093	4.535.925	823,3
343	No	VESTAS V20-100	100	20,0	23,4	531.253	4.535.866	826,1
344	No	VESTAS V20-100	100	20,0	23,4	531.395	4.535.753	824,5
345	No	VESTAS V20-100	100	20,0	23,4	531.543	4.535.752	838,8
346	No	VESTAS V20-100	100	20,0	23,4	531.584	4.536.152	837,4
347	No	VESTAS V20-100	100	20,0	23,4	531.669	4.536.060	836,0
348	No	VESTAS V20-100	100	20,0	23,4	531.589	4.536.037	840,5
349	No	VESTAS V20-100	100	20,0	23,4	531.584	4.535.915	849,0
350	No	VESTAS V20-100	100	20,0	23,4	531.692	4.535.880	838,4
351	No	VESTAS V20-100	100	20,0	23,4	531.752	4.535.810	839,5
352	No	VESTAS V20-100	100	20,0	23,4	527.299	4.534.539	843,0
353	No	VESTAS V20-100	100	20,0	23,4	527.362	4.534.524	850,5
354	No	VESTAS V20-100	100	20,0	23,4	521.562	4.548.446	717,7
355	No	VESTAS V20-100	100	20,0	23,4	521.864	4.548.126	679,6
356	No	VESTAS V20-100	100	20,0	23,4	521.743	4.548.324	702,5
357	No	VESTAS V20-100	100	20,0	23,4	521.781	4.548.233	691,8
358	No	VESTAS V20-100	100	20,0	23,4	521.797	4.548.387	711,9
359	No	VESTAS V20-100	100	20,0	23,4	521.612	4.548.601	739,7
360	No	VESTAS V20-100	100	20,0	23,4	521.534	4.550.033	815,3
361	No	VESTAS V60-850	850	60,0	60,0	521.610	4.550.083	814,2
362	No	VESTAS V20-100	100	20,0	23,4	521.386	4.550.240	813,7
363	No	VESTAS V20-100	100	20,0	23,4	521.530	4.550.308	820,8
364	No	VESTAS V20-100	100	20,0	23,4	520.993	4.550.746	795,1
365	No	VESTAS V20-100	100	20,0	23,4	520.935	4.550.762	795,4
366	No	VESTAS V20-100	100	20,0	23,4	520.869	4.550.798	796,8
367	No	VESTAS V20-100	100	20,0	23,4	520.834	4.550.831	797,4
368	No	VESTAS V20-100	100	20,0	23,4	518.694	4.549.869	724,0
369	No	VESTAS V60-850	850	60,0	60,0	518.742	4.549.898	724,6
370	No	VESTAS V20-100	100	20,0	23,4	518.734	4.549.952	728,2
371	No	VESTAS V60-850	850	60,0	60,0	520.613	4.551.560	870,0
372	No	VESTAS V60-850	850	60,0	60,0	520.578	4.551.656	870,2
373	No	VESTAS V60-850	850	60,0	60,0	520.550	4.551.758	872,5
374	No	VESTAS V60-850	850	60,0	60,0	520.523	4.551.842	872,9
375	No	VESTAS V60-850	850	60,0	60,0	520.404	4.552.017	867,9
376	No	VESTAS V20-100	100	20,0	23,4	523.039	4.548.564	656,9
377	No	VESTAS V20-100	100	20,0	23,4	523.089	4.548.519	653,0
378	No	VESTAS V20-100	100	20,0	23,4	530.478	4.536.475	840,4

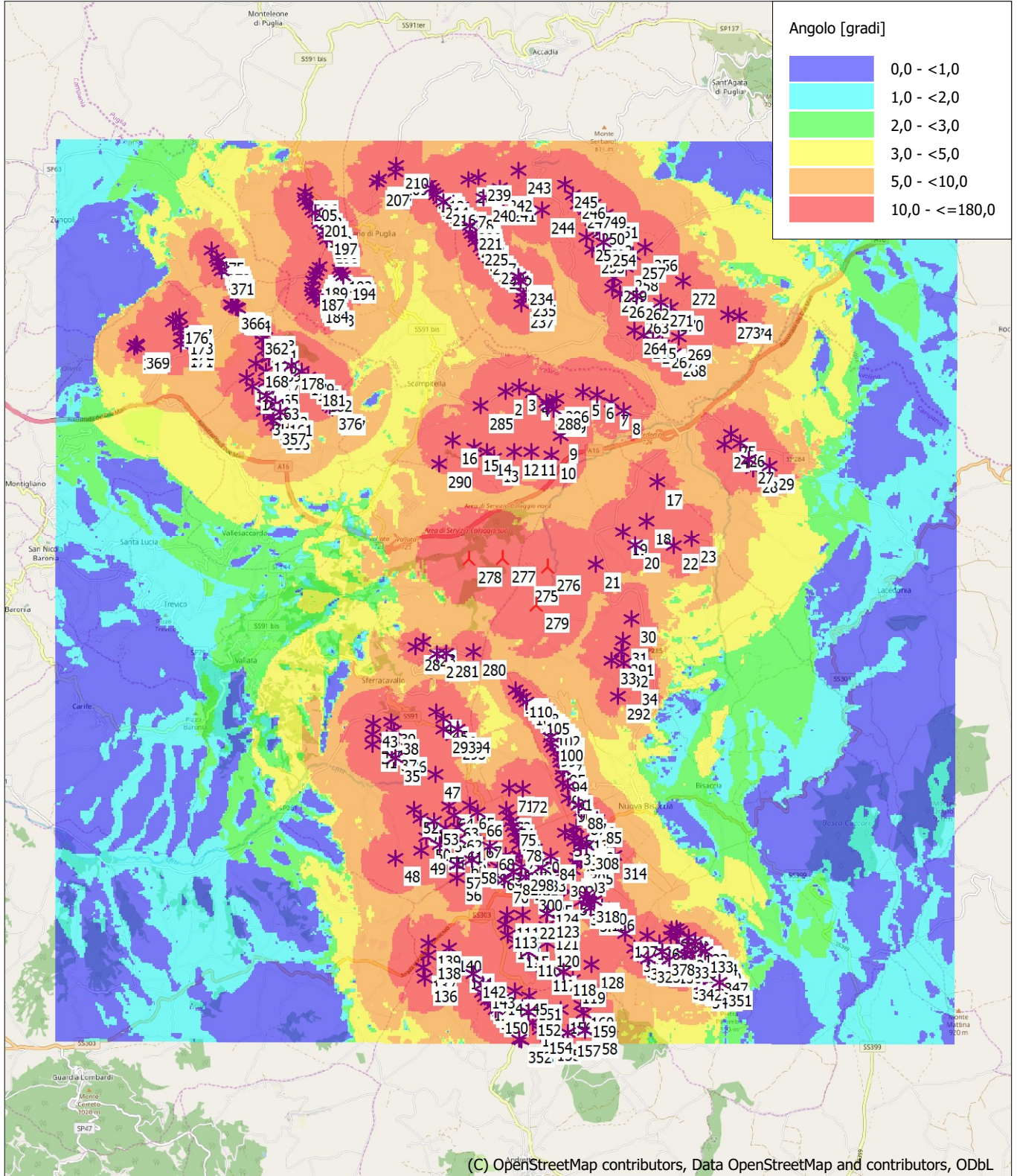
ZVI - Mappa Riepilogo ZVI standard



Mappa: EMD OpenStreetMap , Scala di stampa 1:125.000, Centro mappa UTM (north)-WGS84 Zone: 33 Est: 526.975 Nord: 4.544.461

▲ Nuova WTG * WTG preesistente

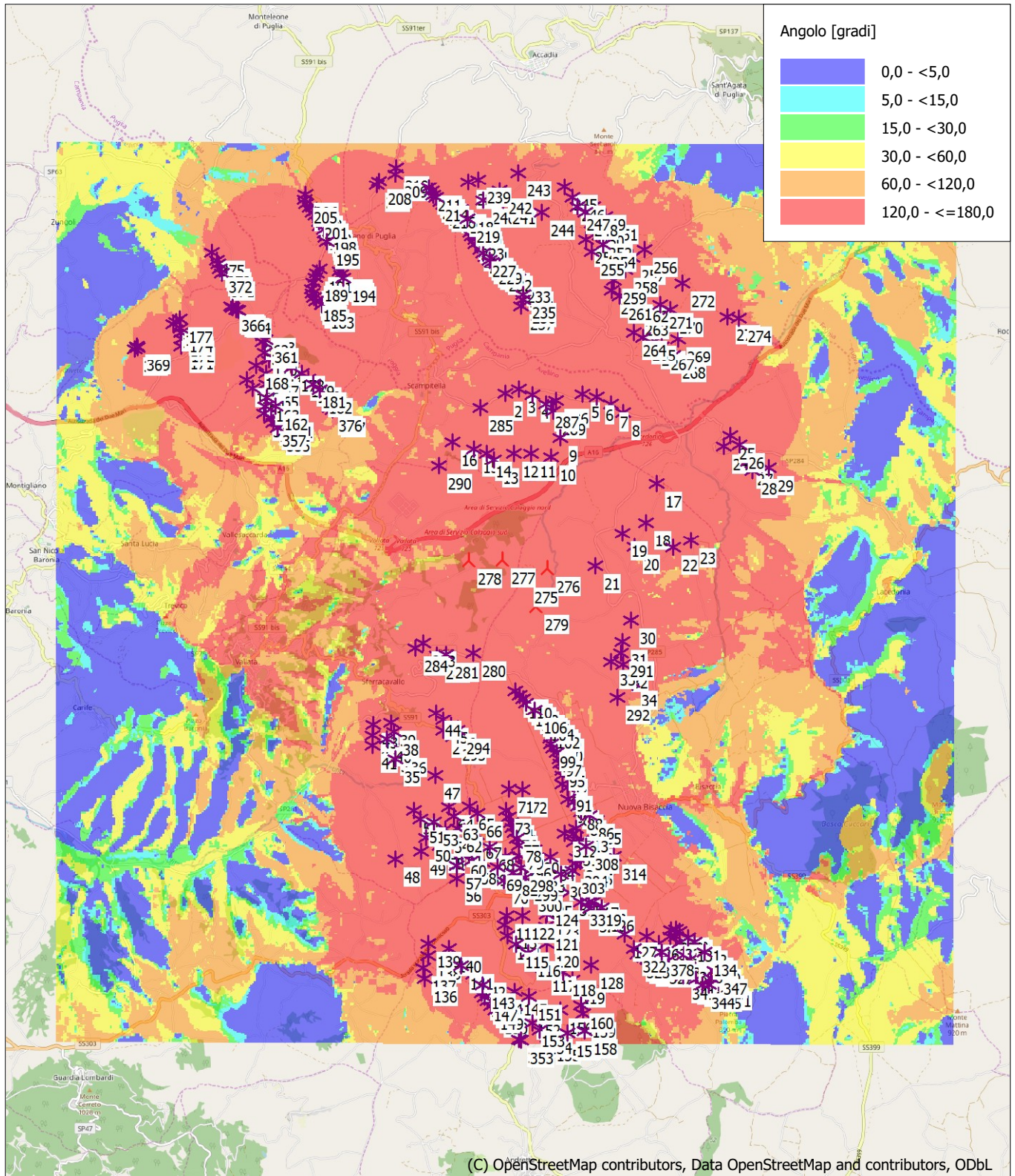
ZVI - Mappa Angolo verticale sotteso



Mappa: EMD OpenStreetMap , Scala di stampa 1:125.000, Centro mappa UTM (north)-WGS84 Zone: 33 Est: 526.975 Nord: 4.544.461

▲ Nuova WTG * WTG preesistente

ZVI - Mappa Angolo orizzontale sotteso



Mappa: EMD OpenStreetMap , Scala di stampa 1:125.000, Centro mappa UTM (north)-WGS84 Zone: 33 Est: 526.975 Nord: 4.544.461

▲ Nuova WTG * WTG preesistente