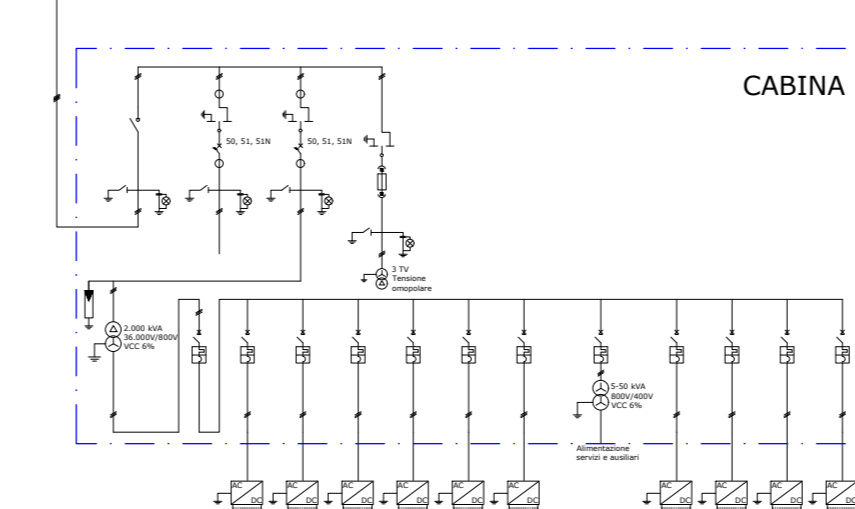
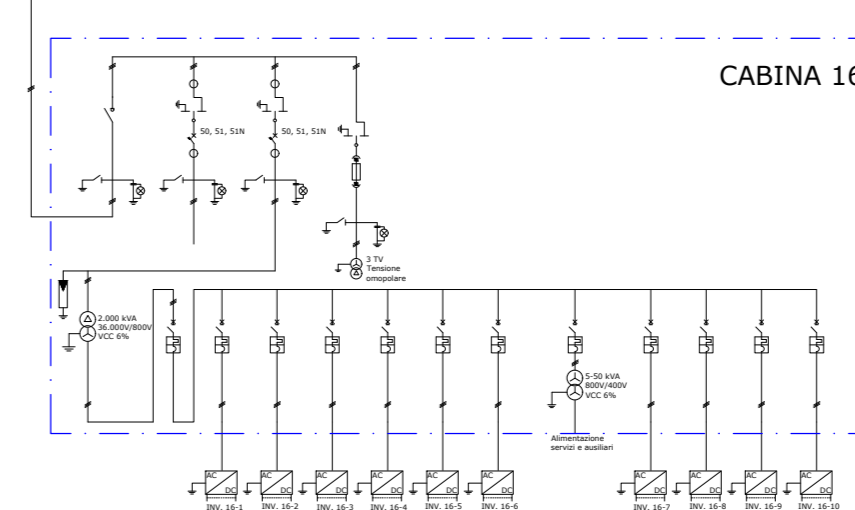
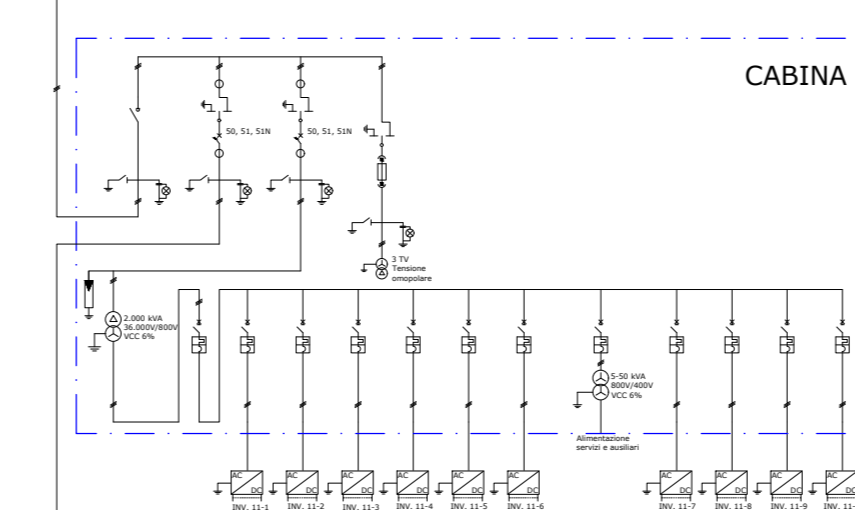
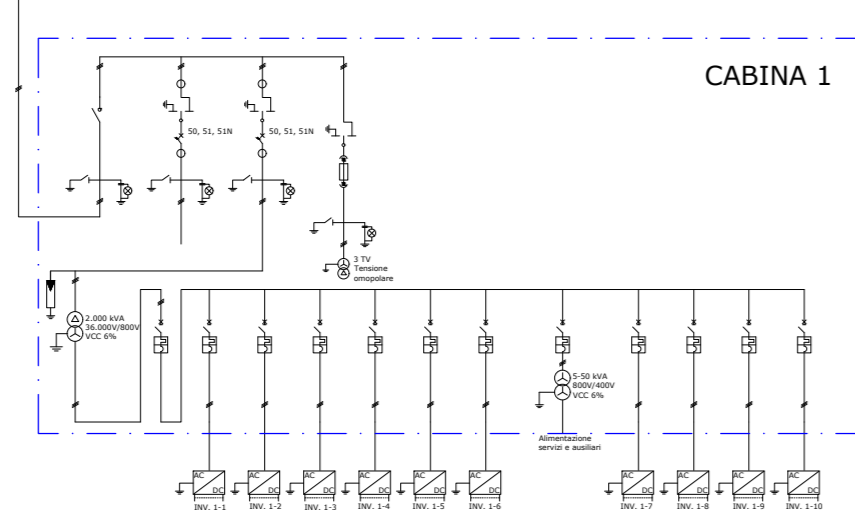
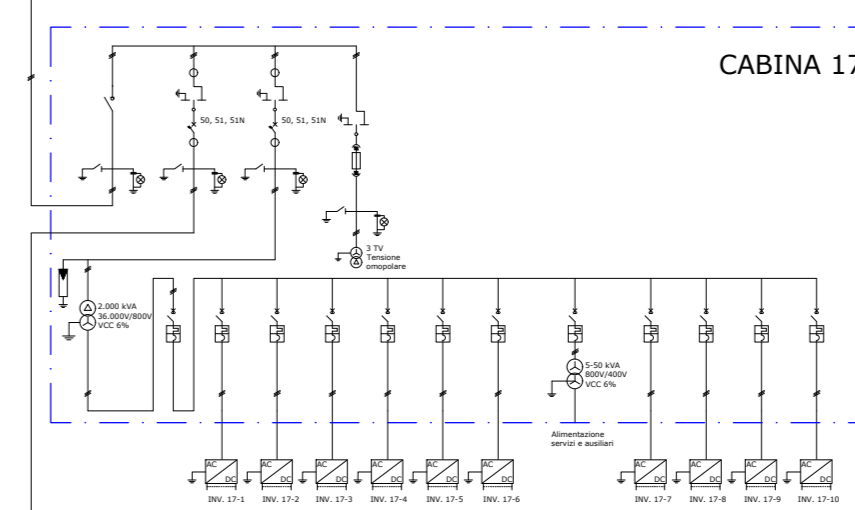
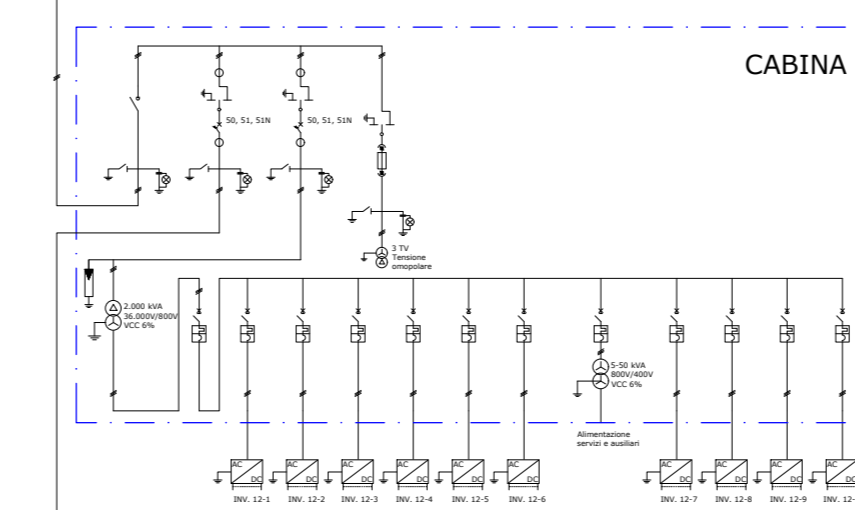
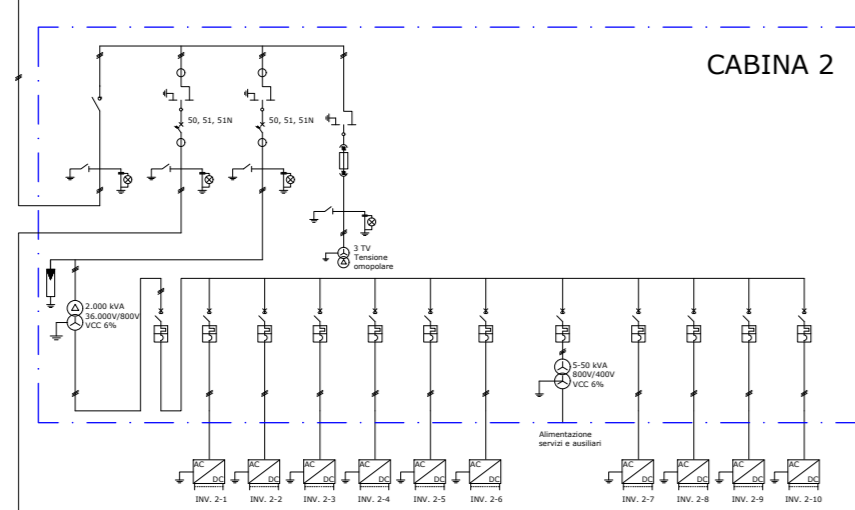
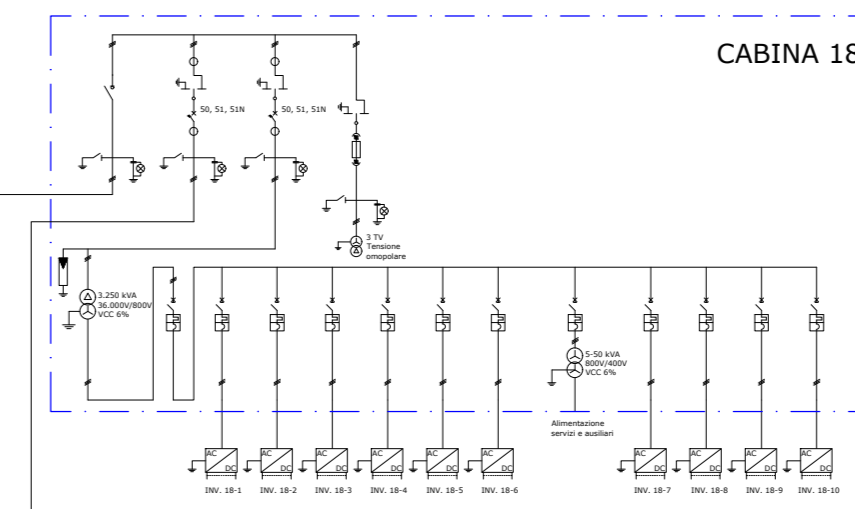
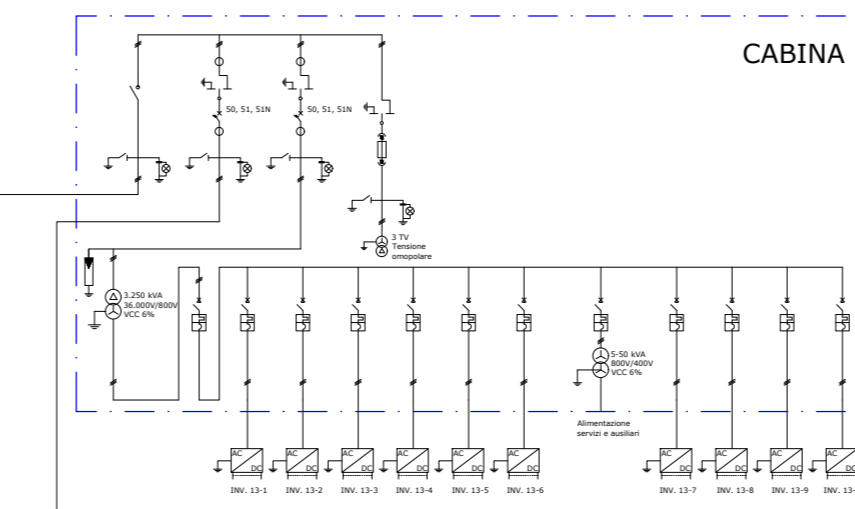
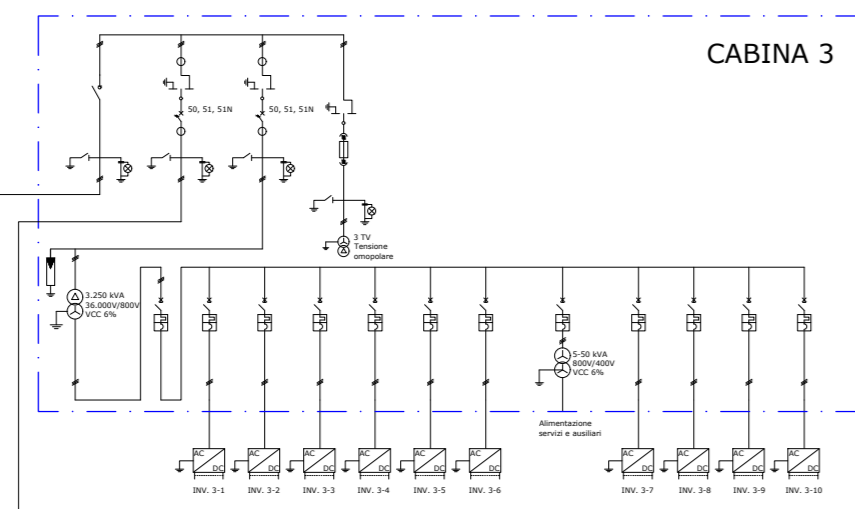
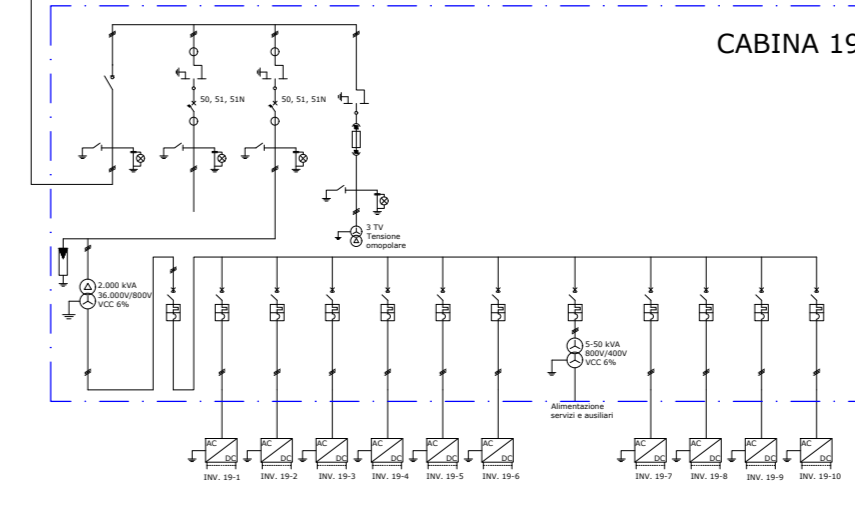
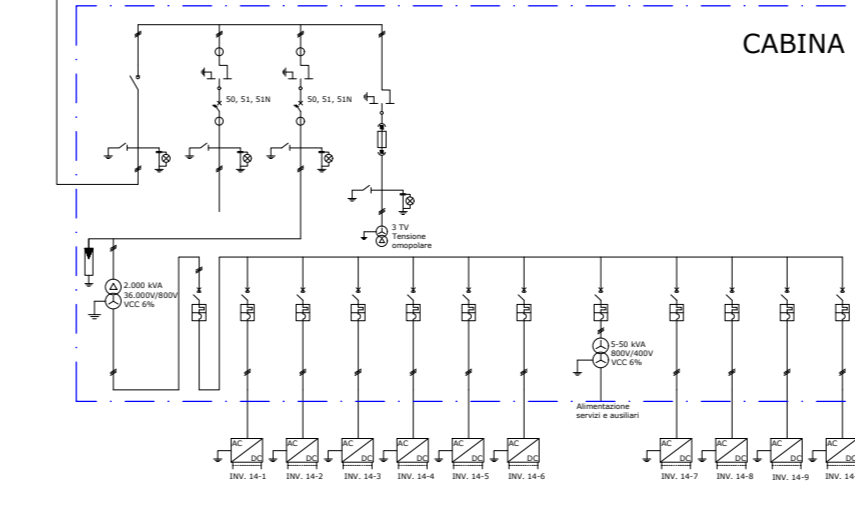
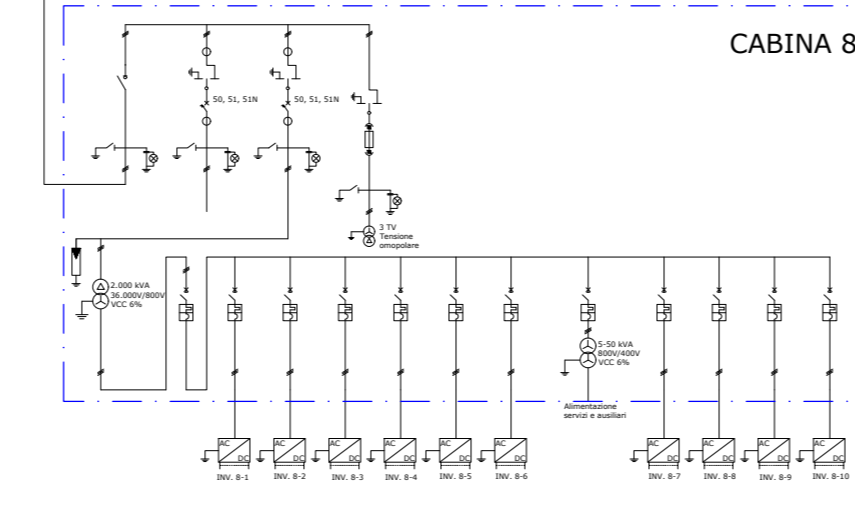
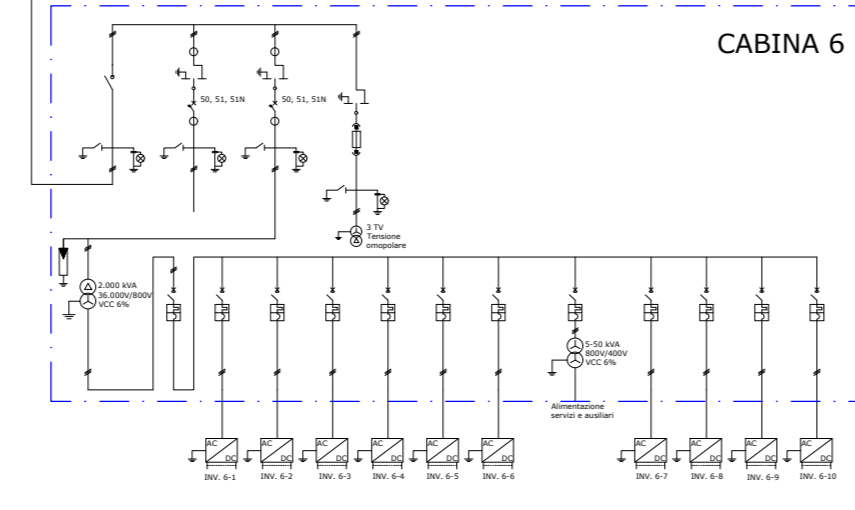
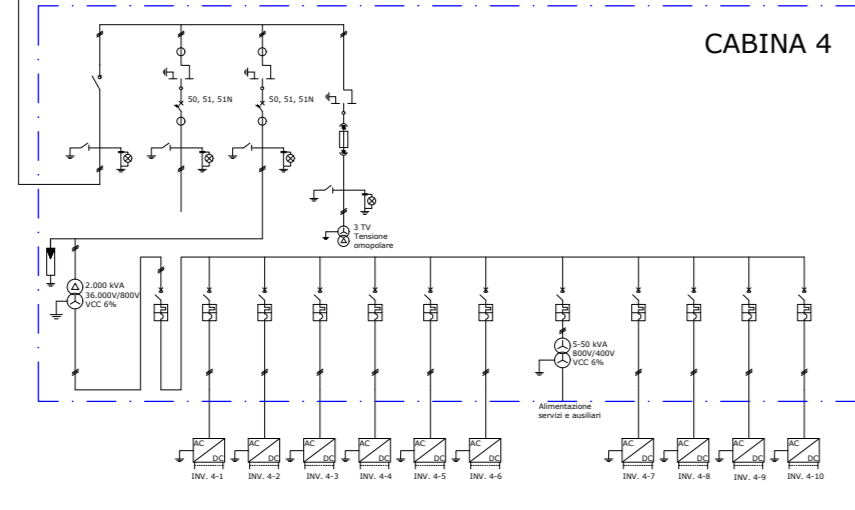
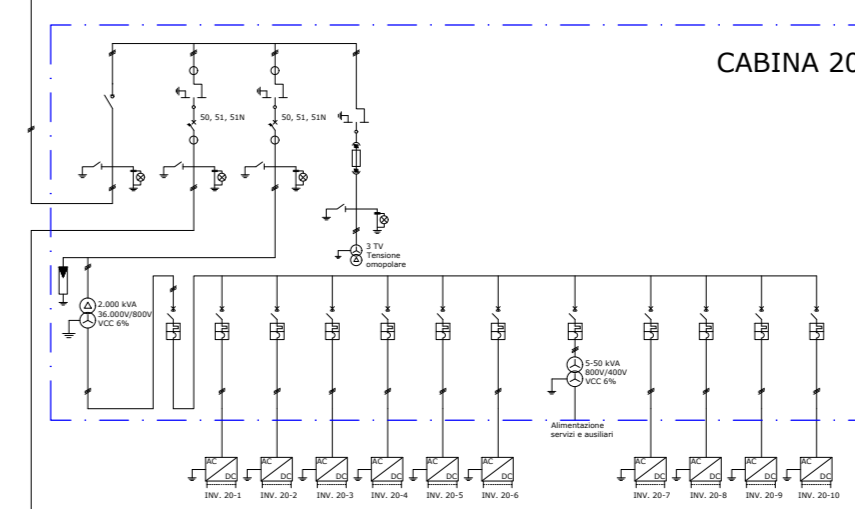
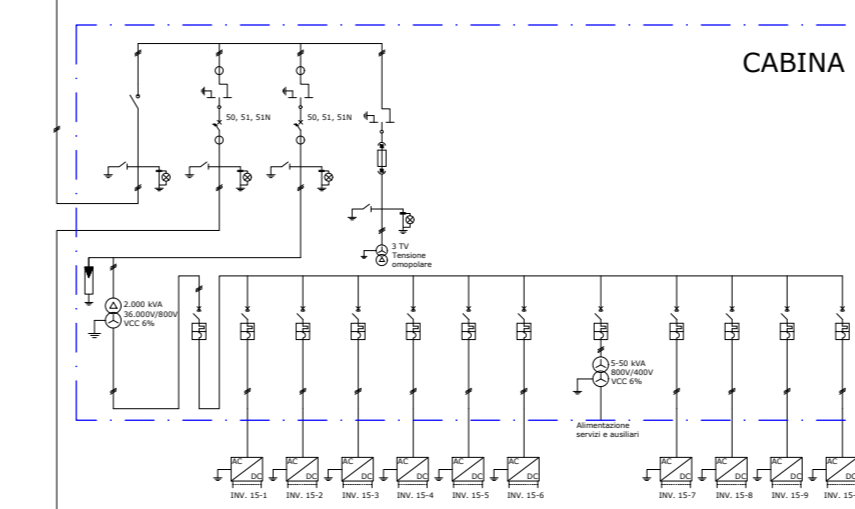
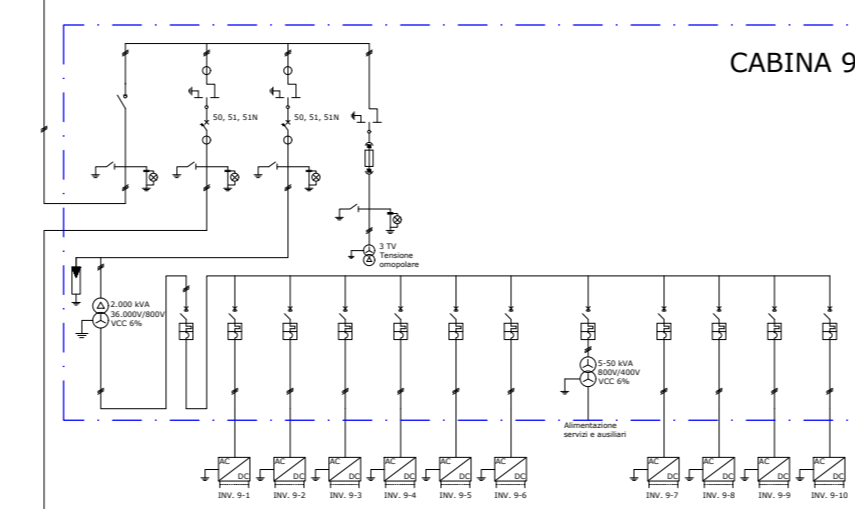
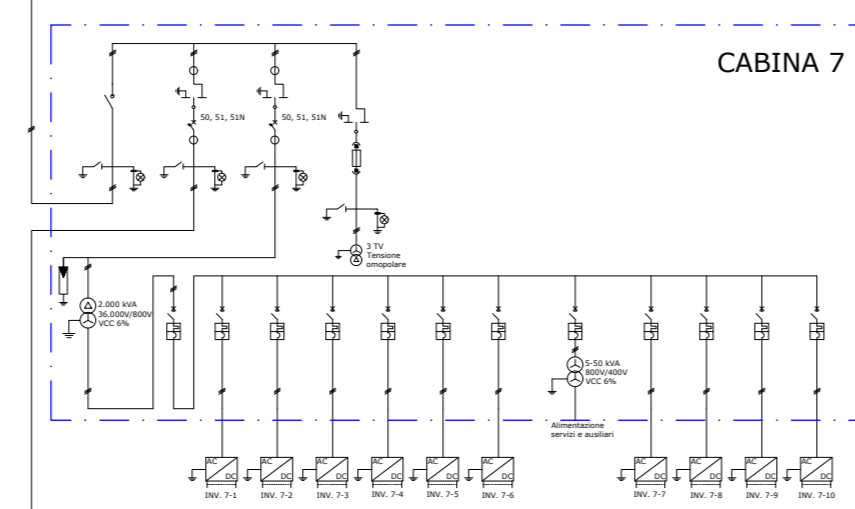
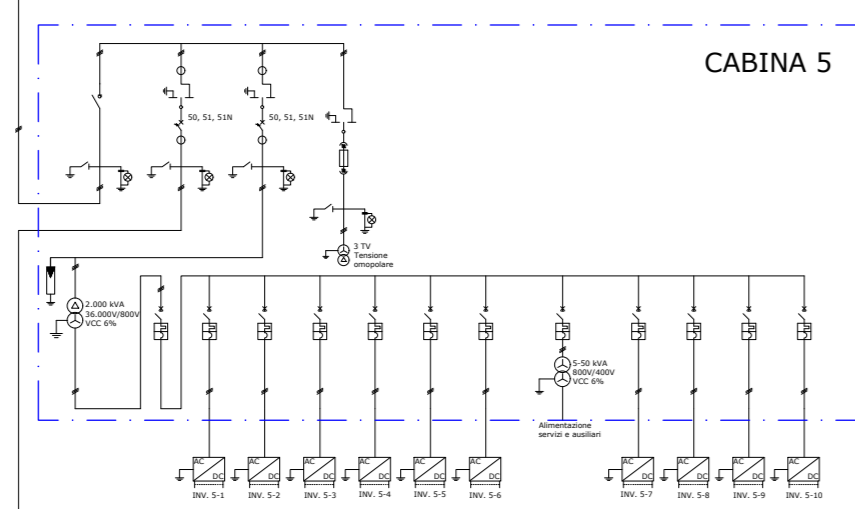
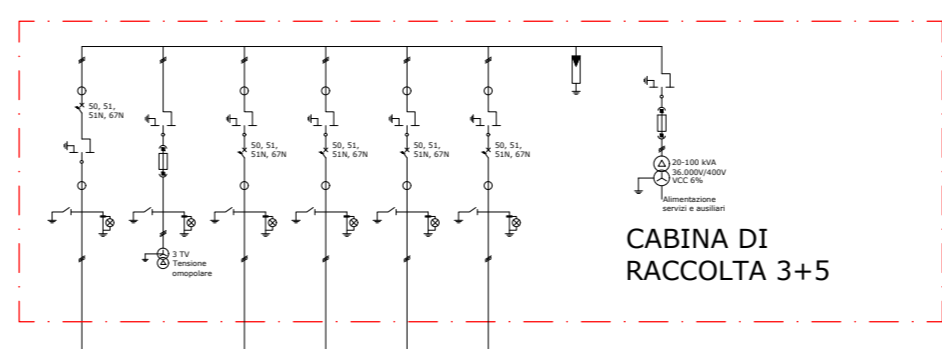
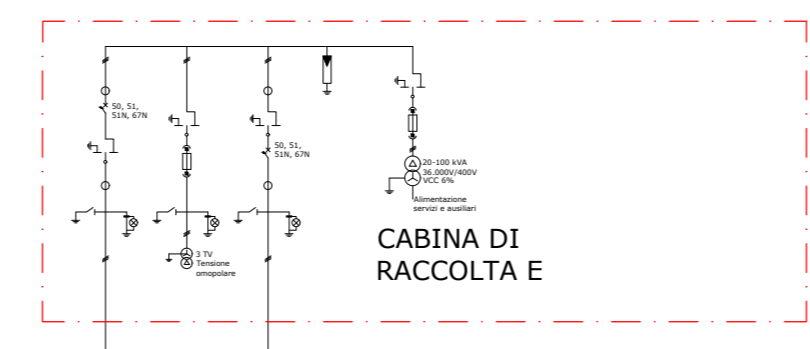
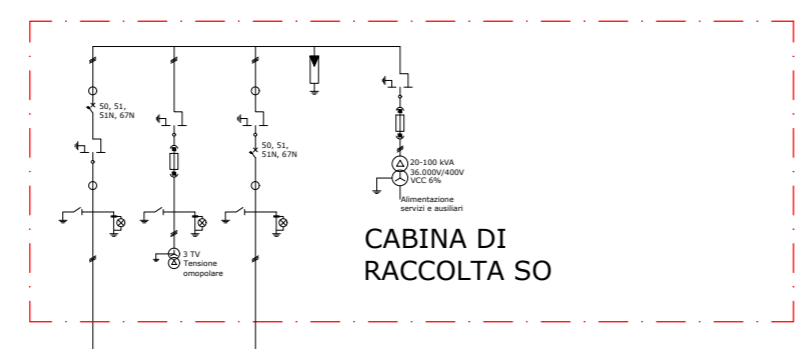
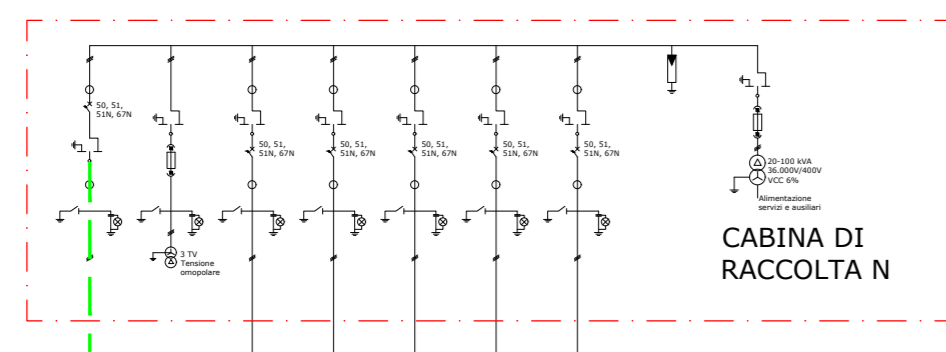
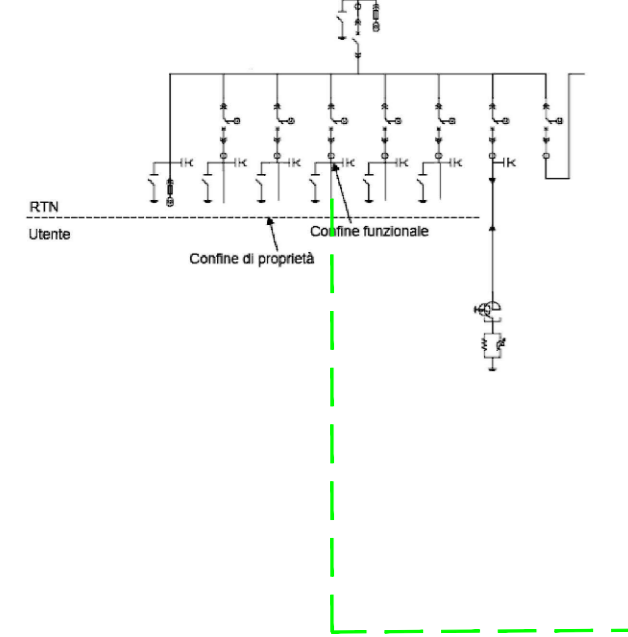


SEZIONE A 150 kV
 NUOVA SE DI TRASFORMAZIONE 380/150 kV DELLA RTN DA
 INSERIRE IN ENTRA ESCE SULLA LINEA RTN A 380 kV
 "BRINDISI SUD-GALATINA" LOCALITA' "CELLINO SAN MARCO"



LEGENDA SIMBOLI

- LINEA A 36 kV
- CABINA DI RACCOLTA
- CABINA DI TRASFORMAZIONE
- LINEA INTERRATA
- INVERTER
- INTERRUTTORE AUTOMATICO
- INTERRUTTORE DI MANOVRA
- TRASFORMATORE AUSILIARI
- TRASFORMATORE A 2 AVVOLGIMENTI
- TRASFORMATORE DI MISURA (TENSIONE OMOPOLARE)
- SPD
- FASI
- NEUTRO
- TERRA
- TRASFORMATORE DI CORRENTE (TC)
- SPIA PRESENZA TENSIONE
- FUSIBILE
- SEZIONATORE A DUE POSIZIONI
- SEZIONATORE DI MESSA A TERRA

**IMPIANTO AGRIVOLTAICO DELLA POTENZA NOMINALE
 DI 40.683,52 kWp
 "SALICE SANCHIRICO"**

UBICATO NEL COMUNE DI SALICE SALENTINO (LE)

CODICE IDENTIFICATIVO PRATICA AU REGIONALE: T141QE2

Titolo Elaborato:

SCHEMA ELETTRICO UNIFILARE

IDENTIFICAZIONE ELABORATO (MITE)

LIVELLO PROGETTAZIONE	TIPO DOCUMENTO	CODICE IDENTIFICATIVO	DATA	SCALA
PD	D	T141QE2_TAV_09	LUGLIO 2022	1:2.000

REVISIONI

REV.	DATA	DESCRIZIONE	ESEGUITO	VERIFICATO	APPROVATO
00	07/22	Prima emissione	Ing. Cosimo Totaro	Ing. Cosimo Totaro	Ing. Cosimo Totaro

PROGETTAZIONE:



TECNICO:

Ing. Cosimo Totaro
 Ordine degli Ingegneri
 Provincia di Brindisi n.1718



PROPONENTE:

TRINA SOLAR PAPIRO S.R.L.
 Piazza Borromeo, 14
 20123, Milano (MI) - Italy

