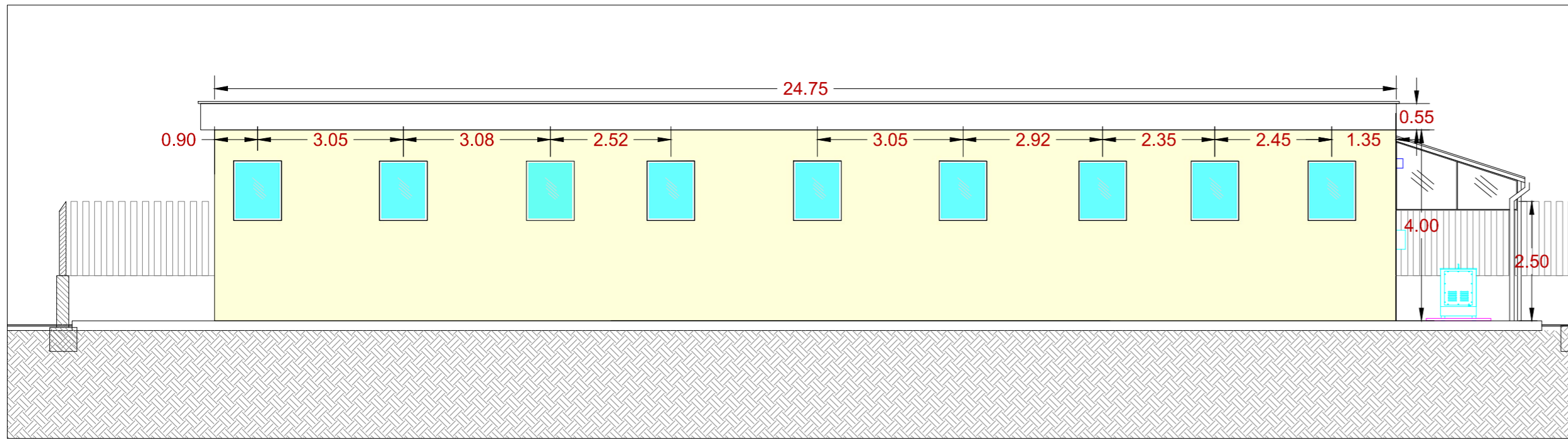
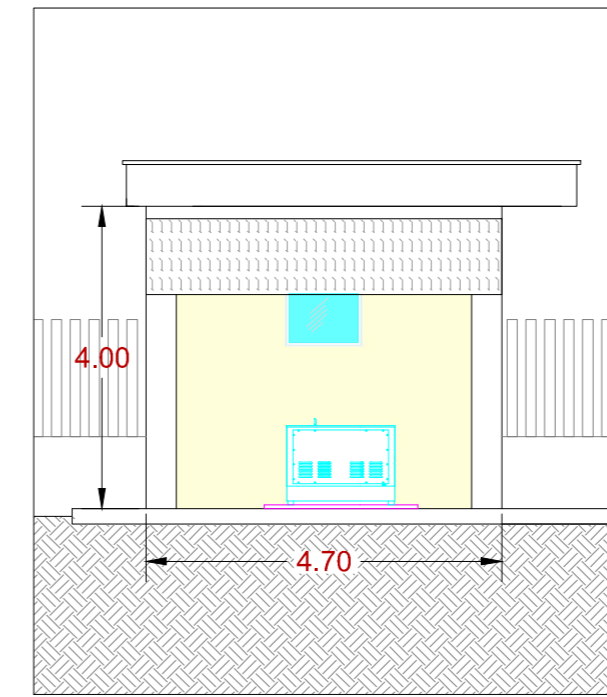


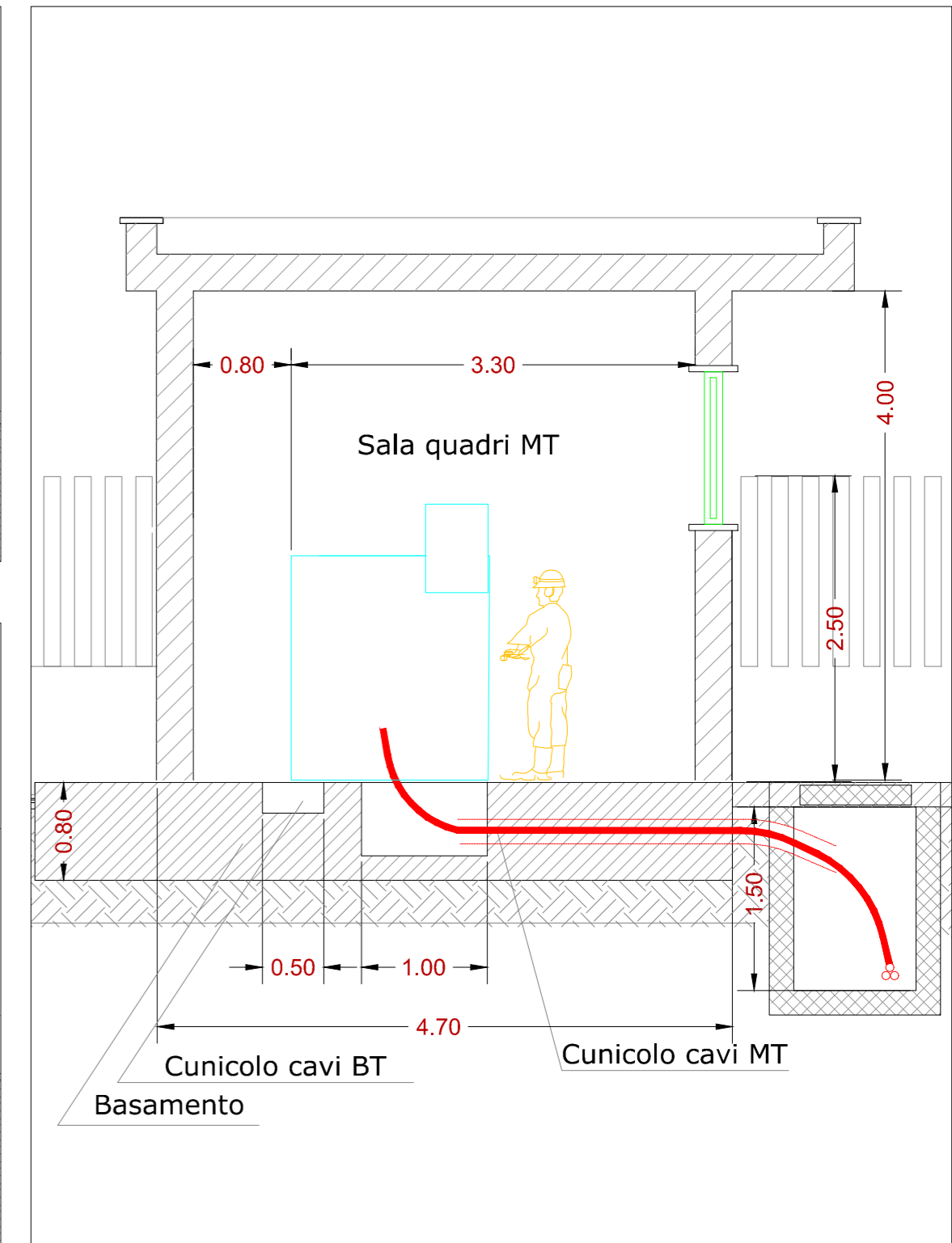
Vista A - Scala 1:100



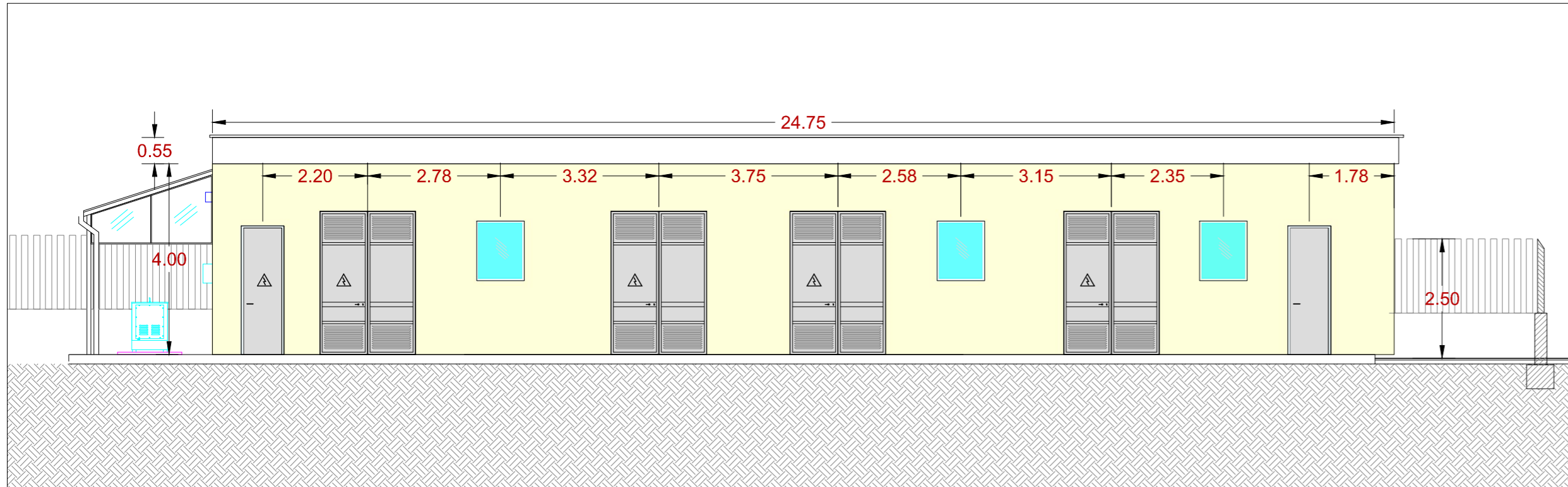
Vista C - Scala 1:100



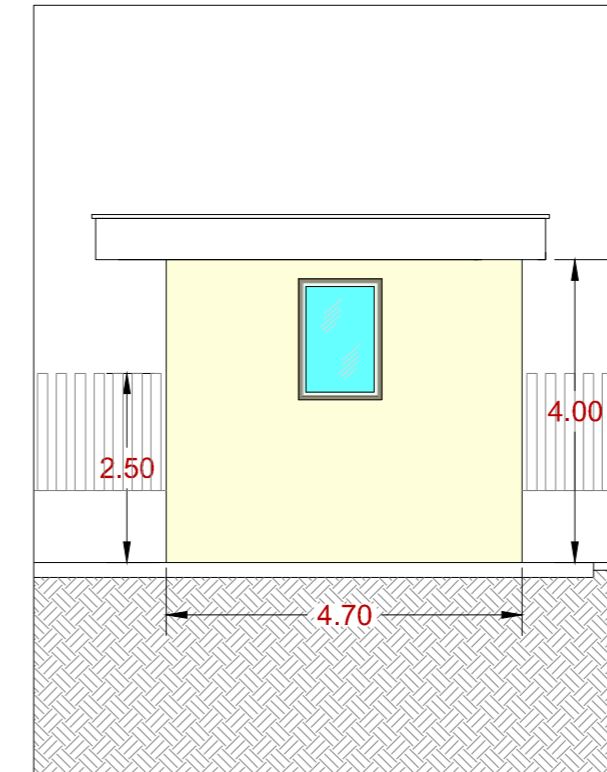
Sezione 1-1 - Scala 1:50



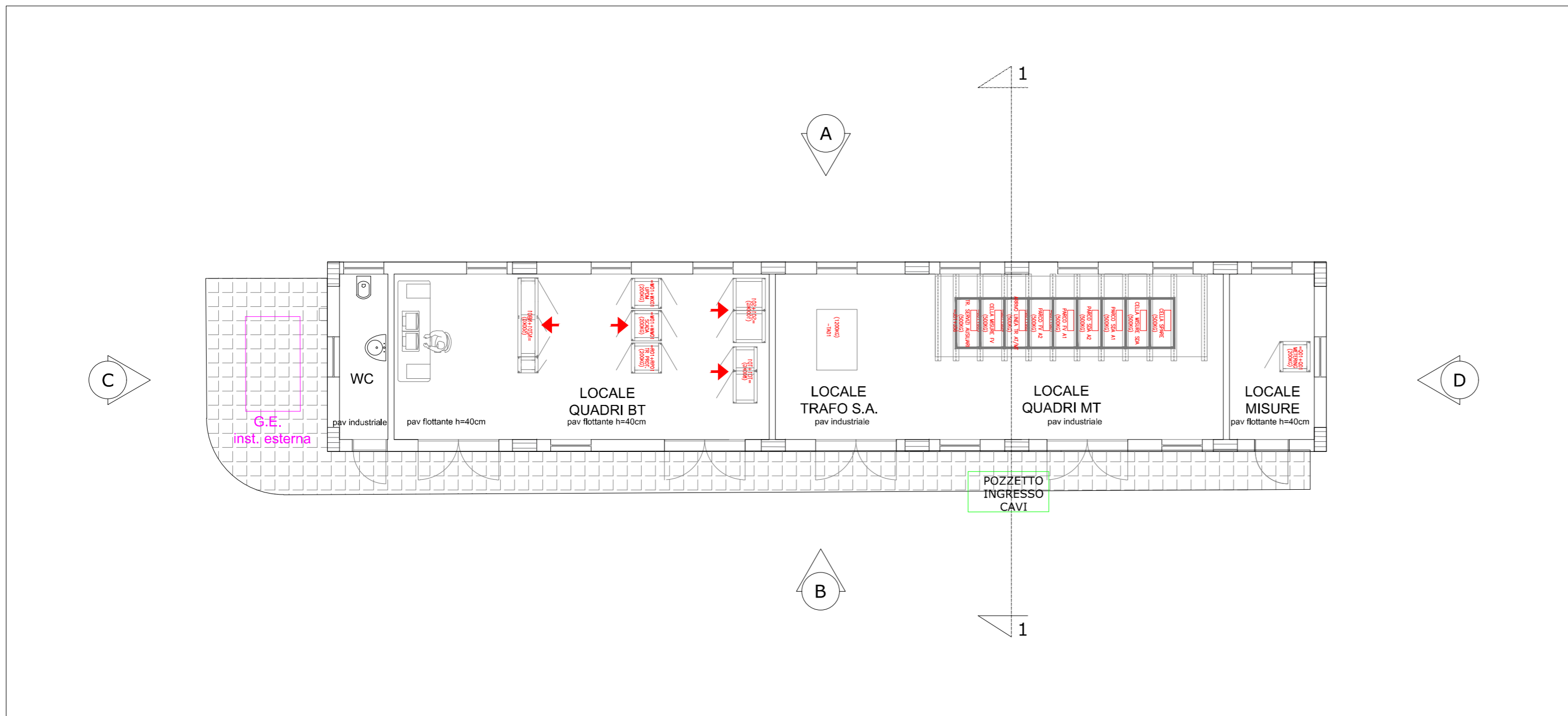
Vista B - Scala 1:100



Vista D - Scala 1:100



Planimetria interna - Edificio Tecnologico - Scala 1:100



COMMITTENTE ENGIE GRILLO SRL		STUDIO DI PROGETTAZIONE Ing Daniele Cavallo Via C. del Croix, 55 - 72022 - Latiano (BR)					
		 					
0	Gen-23	EMESSO PER ITER AUTORIZZATIVO			CS	DC	PL
REV.	DATE	DESCRIPTION			BY	CHD	APP.
REVISIONS							
Impianto Agrivoltaico integrato innovativo denominato "Grillo" avente potenza d'impianto di 53,97 MW (45MW in immissione) con annesso SdA della potenza di 10MW e 80MWh di capacità di accumulo e relative opere connesse Comuni di Mazara del Vallo e Marsala (TP)					APPROVED FOR CONSTRUCTION DWG. REV. DATE SIGNATURE ORDER N° SUPPLIER CONTRACT N°		
PROGETTO DEFINITIVO STAZIONE UTENTE					SUBPROJECT CODE: THIS DWG. SUPERSEDED BY SCALE THIS DWG. SUPERSEDES Varie FWI DWG N° REV.		
OBJECT: TAV.07 Planimetria, viste e sezioni edificio tecnologico - Stazione utente					SHEET OF A2		
THIS DRAWING IS THE PROPERTY OF ENGIE GRILLO SRL AND IS LENT WITH-OUT CONSIDERATION OTHER THAN THE BORROWER'S AGREEMENT THAT IT SHALL NOT BE REPRODUCED COPIED LENT OR DISPOSED OF DIRECTLY OR INDIRECTLY. NOR USED FOR ANY PURPOSE OTHER THAN THAT FOR WHICH IT IS SPECIFICALLY FURNISHED THE APPARATUS SHOWN IN THE DRAWING IS COVERED BY PATENTS.							
CAD FILE NAME:							