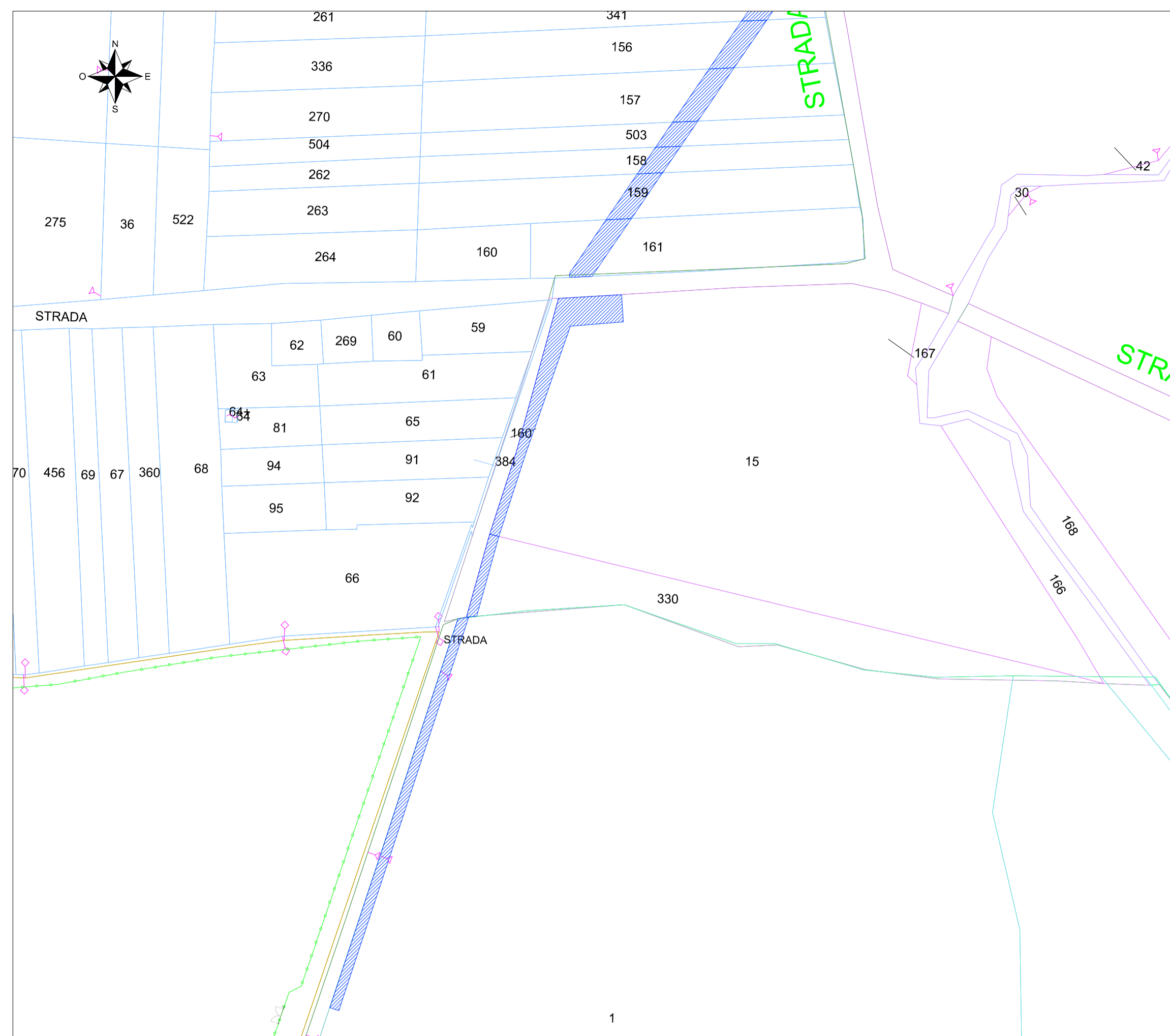
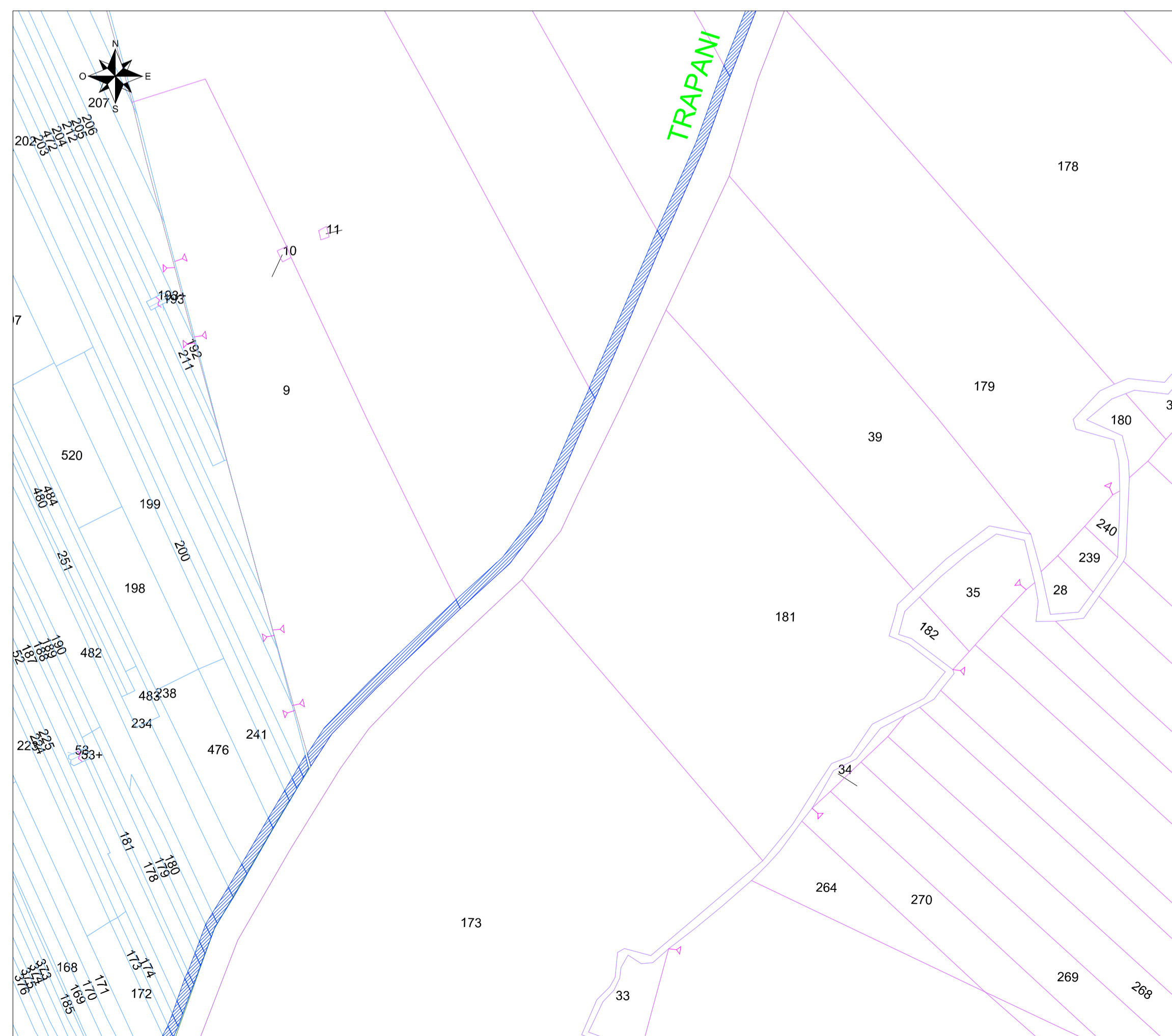


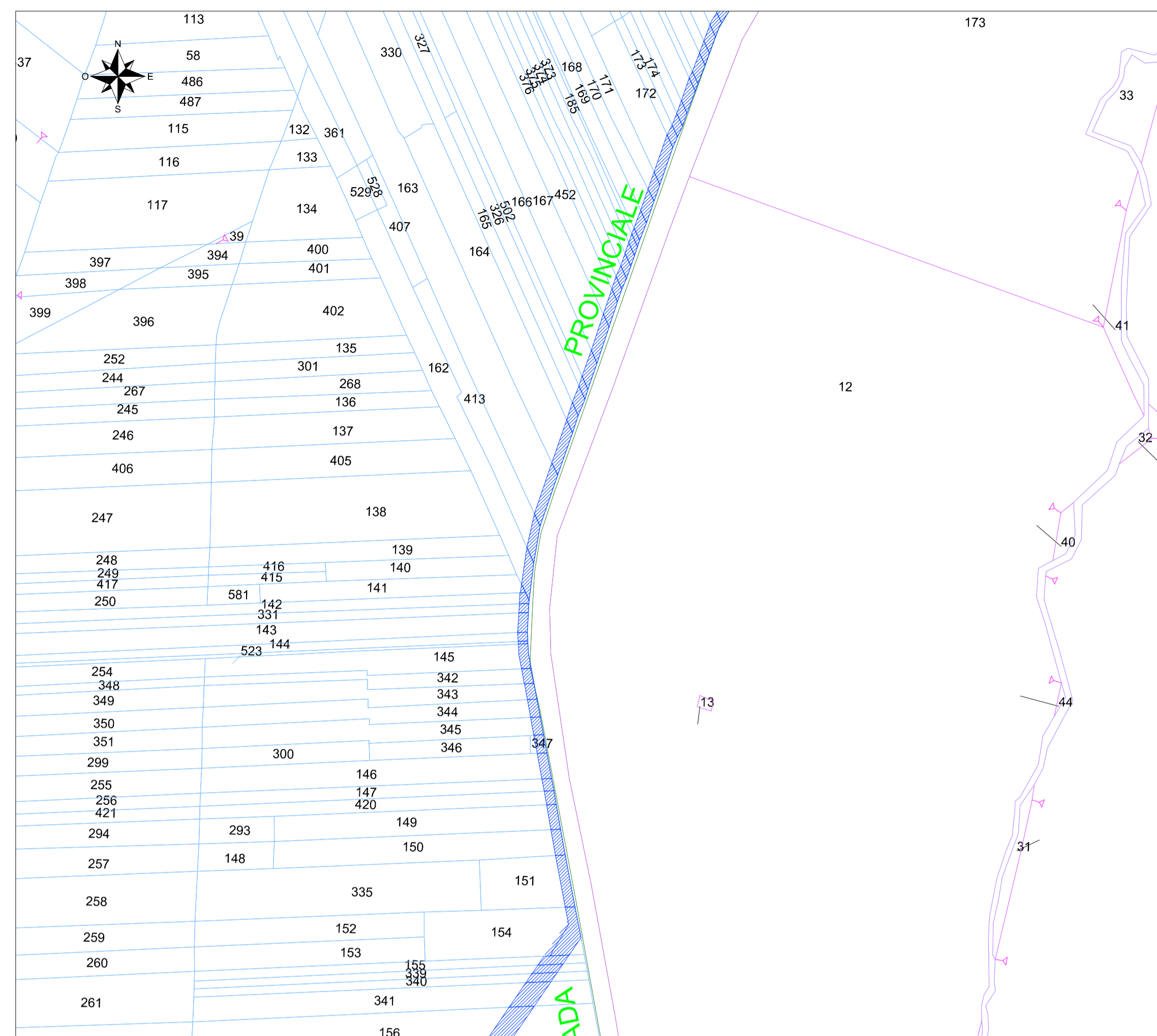
Inquadramento piano particellare - Vista 1 - Scala 1:2000



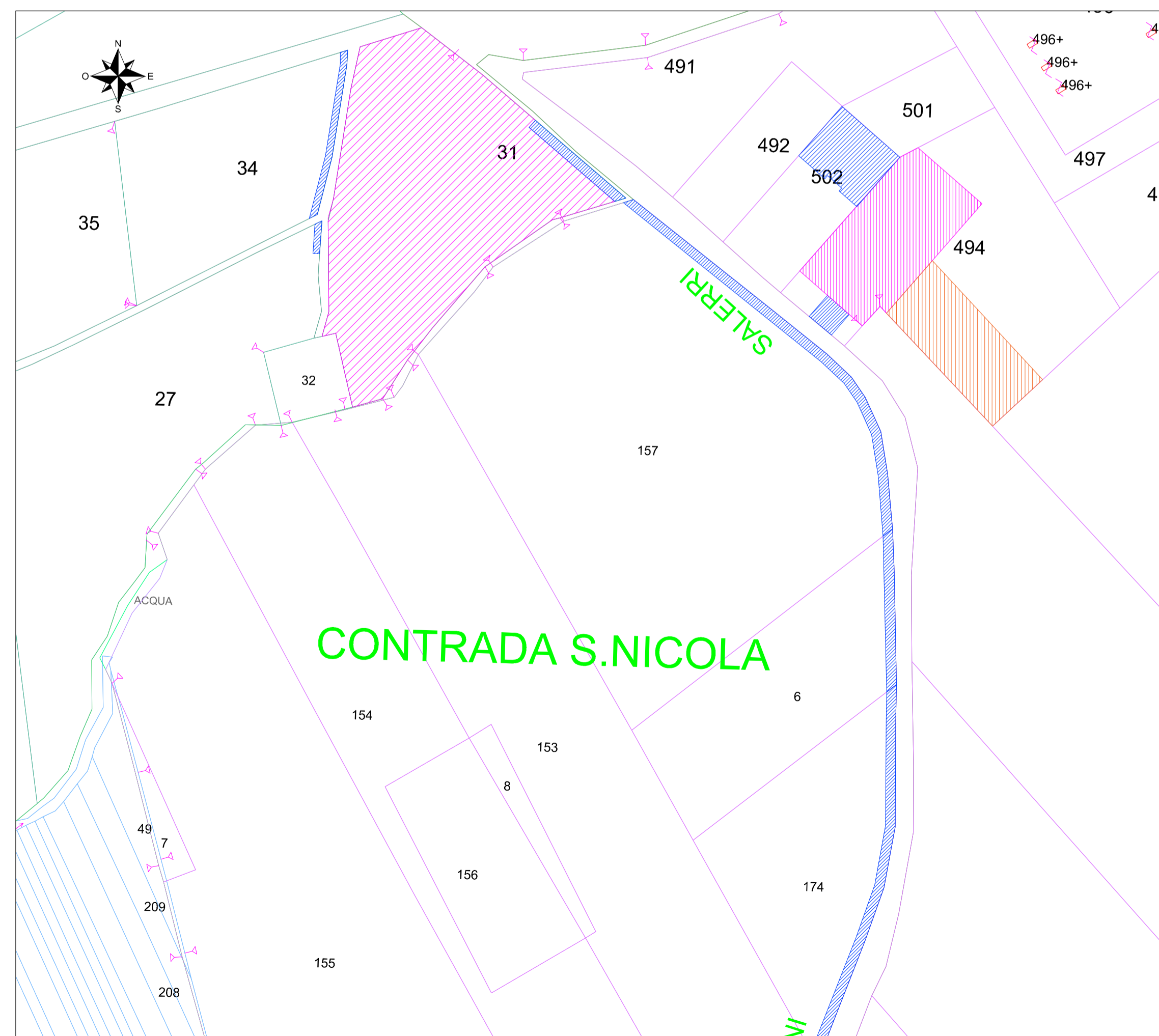
Inquadramento piano particellare - Vista 3 - Scala 1:2000



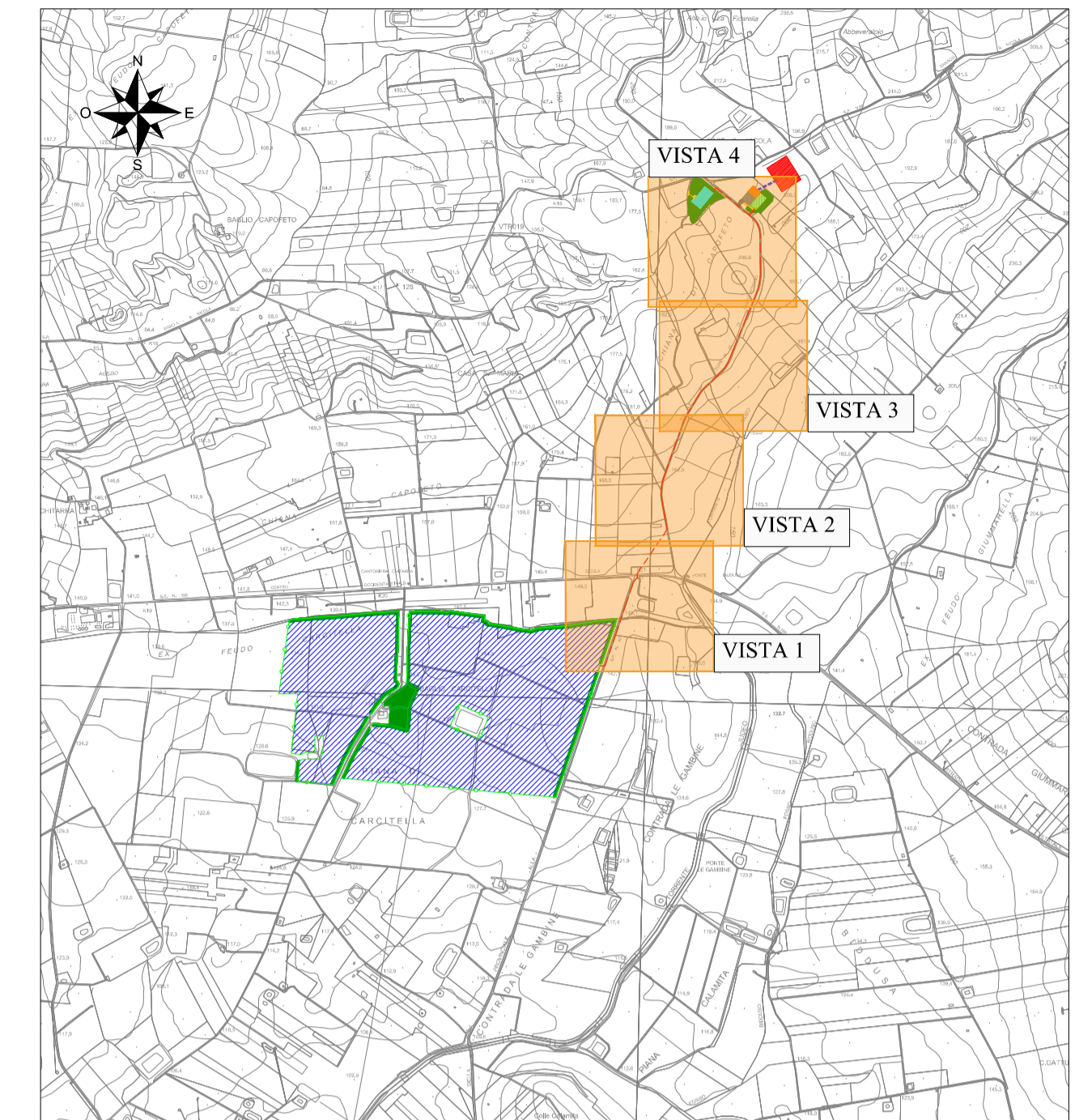
Inquadramento piano particellare - Vista 2 - Scala 1:2000



Inquadramento piano particellare - Vista 4 - Scala 1:2000



SCALA 1:25000



LEGENDA CATASTALE

	Foglio 22 - Mazara del Vallo
	Foglio 137 - Marsala
	Foglio 188 - Marsala
	Foglio 189 - Marsala

LEGENDA

	Recinzione impianto agrivoltico/BESS
	Cancello di accesso impianto agrivoltico
	Asservimento cavidotto
	Occupazione definitiva
	Superficie di occupazione temporanea

COMMITTENTE <b>ENGIE GRILLO SRL</b>	STUDIO DI PROGETTAZIONE Ing Daniele Cavallo Via C. del Croix, 55 - 72022 - Latiano (BR)

0	Gen-23	EMESSO PER ITER AUTORIZZATIVO	CS	DC	PL
REV.	DATE	DESCRIPTION	BY	CHKD	APP.
REVISIONS					
<b>Impianto Agrivoltico integrato innovativo denominato "Grillo" avente potenza d'impianto di 53,97 MW (45MW in immissione) con annesso SdA della potenza di 10MW e 80MWh di capacità di accumulo e relative opere connesse Comuni di Mazara del Vallo e Marsala (TP)</b>			APPROVED FOR CONSTRUCTION		
<b>PROGETTO DEFINITIVO IMPIANTO AGRIVOLTAICO E OPERE CONNESSE</b>			DWG. REV.      DATE SIGNATURE ORDER N° SUPPLIER CONTRACT N°		
OBJECT: <b>TAV.10 Piano particellare di esproprio grafico</b>			SUBPROJECT CODE: THIS DWG. SUPERSEDED BY      SCALE THIS DWG. SUPERSEDES      1:2000 FWI DWG N°      REV. SHEET      OF      A1		
THIS DRAWING IS THE PROPERTY OF ENGIE GRILLO SRL AND IS LENT WITH-OUT CONSIDERATION OTHER THAN THE BORROWER'S AGREEMENT THAT IT SHALL NOT BE REPRODUCED, COPIED, LENT OR DISPOSED OF DIRECTLY OR INDIRECTLY, NOR USED FOR ANY PURPOSE OTHER THAN THAT FOR WHICH IT IS SPECIFICALLY FURNISHED. THE APPARATUS SHOWN IN THE DRAWING IS COVERED BY PATENTS.					
CAD FILE NAME:					