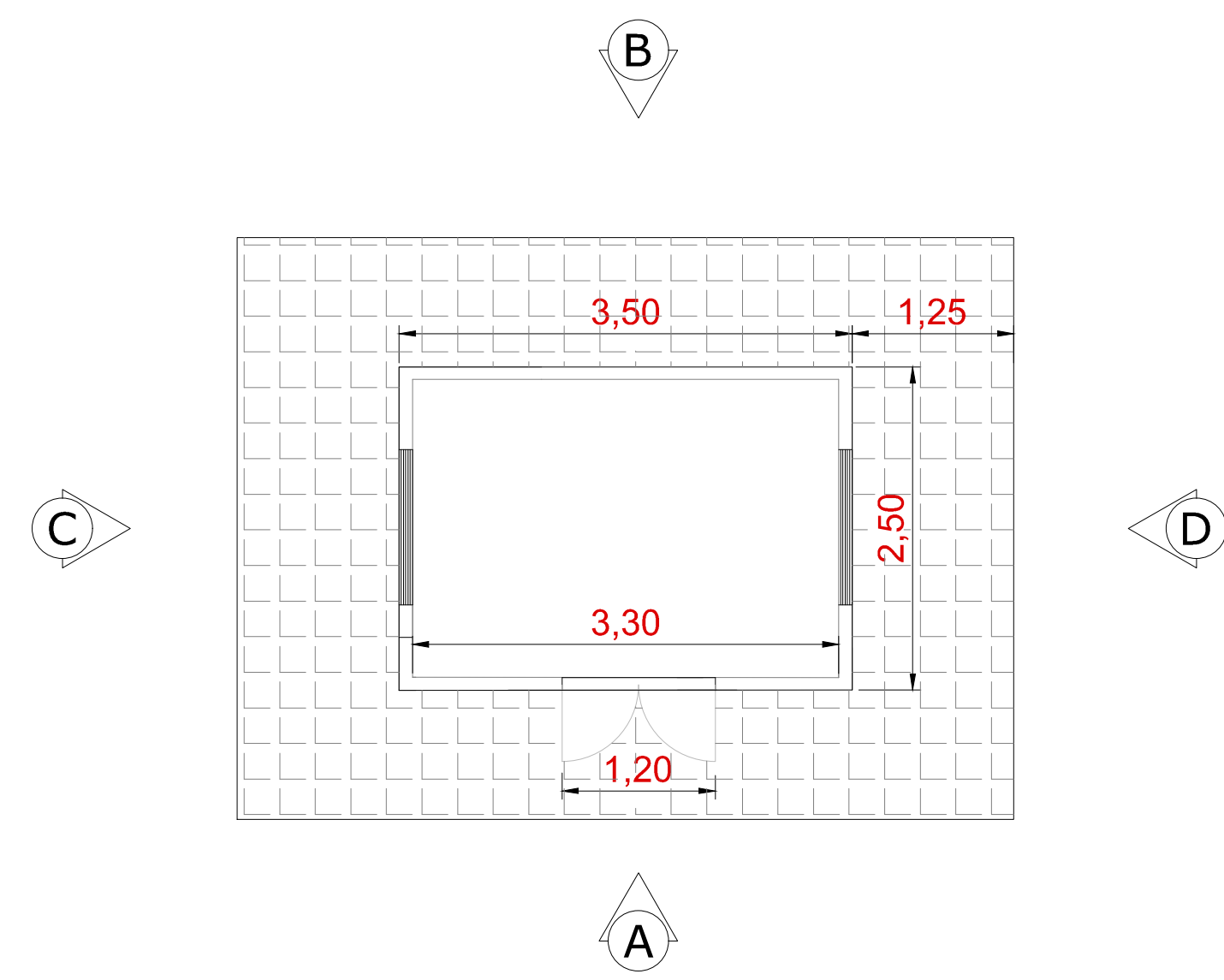
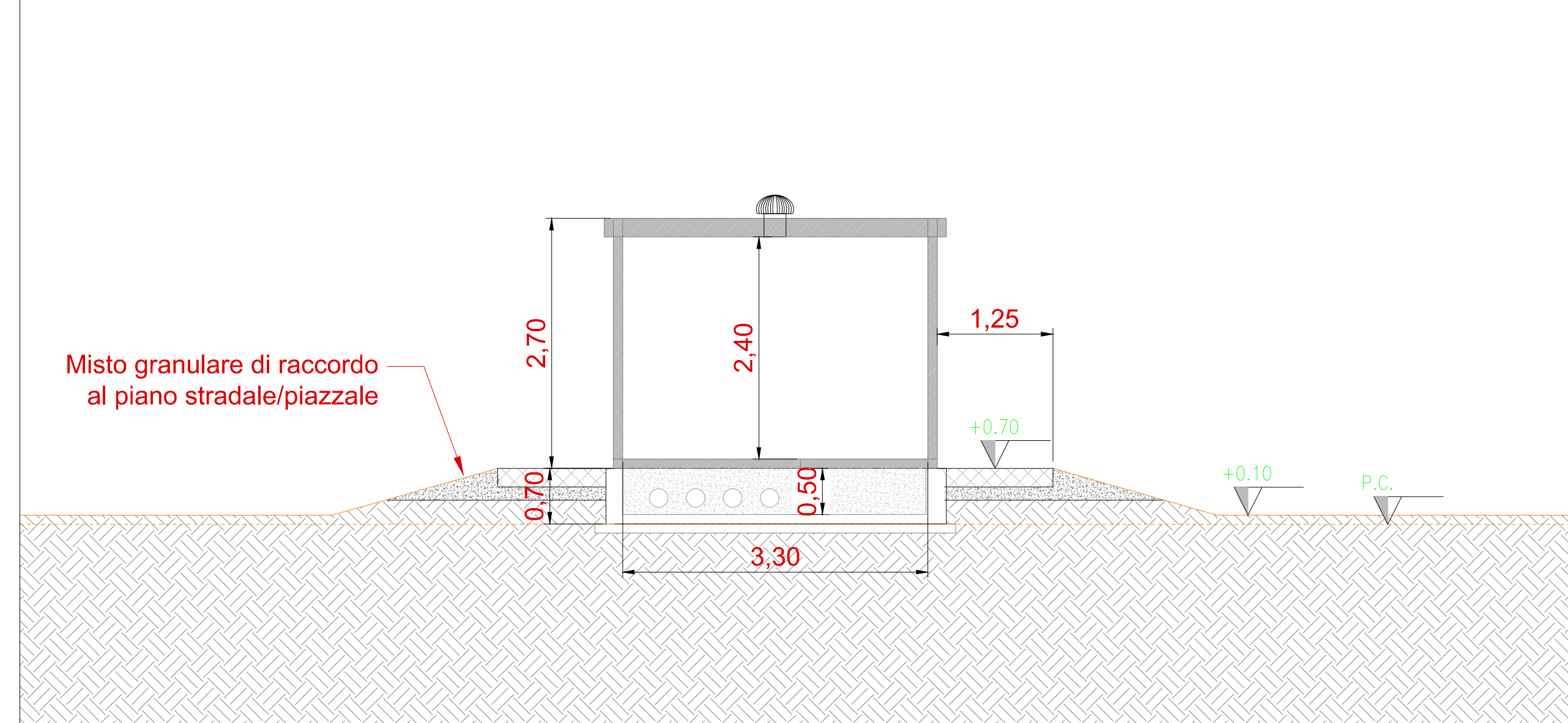


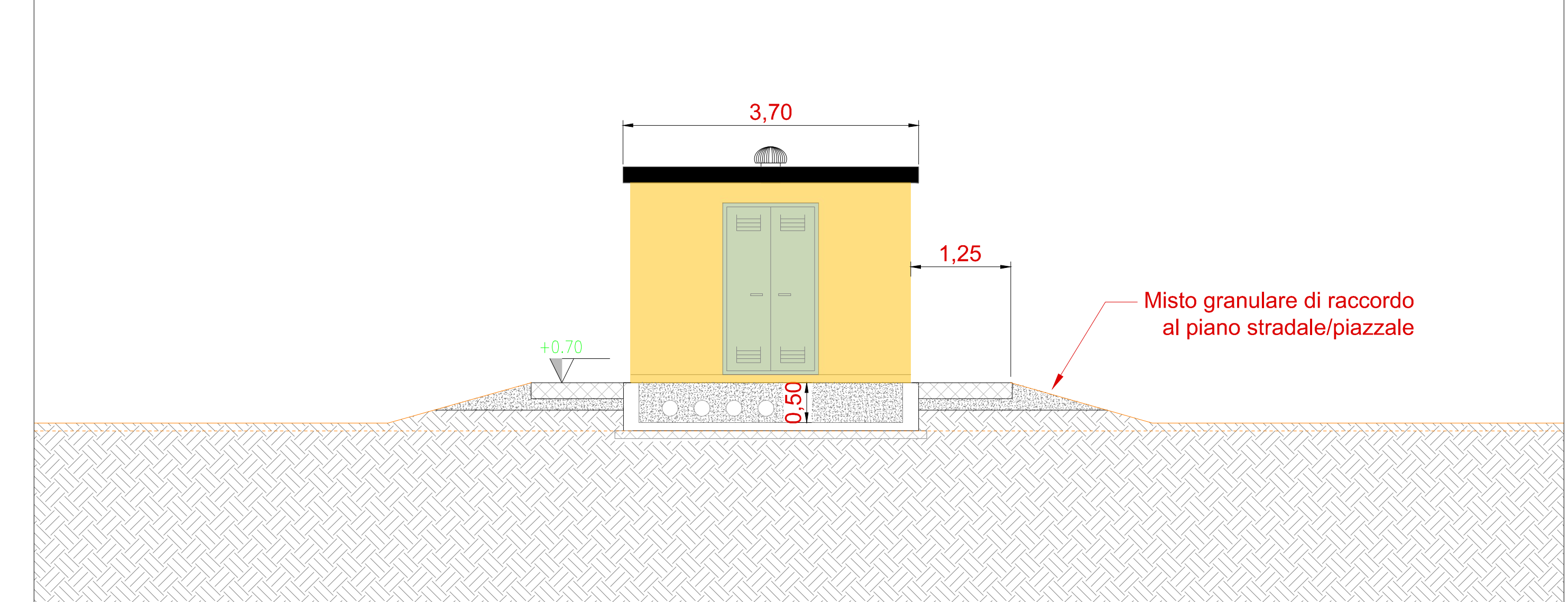
Planimetria - Scala 1:50



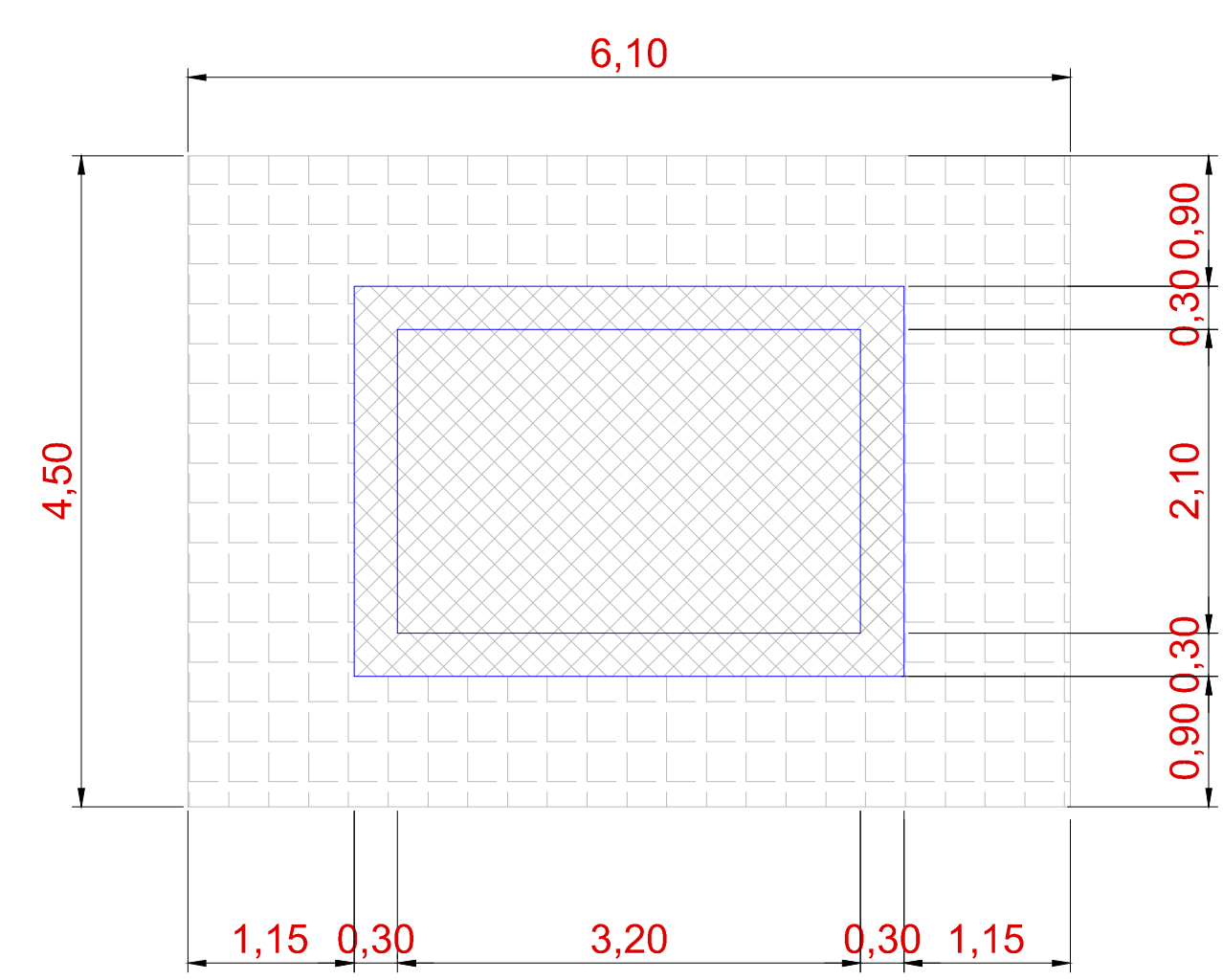
Sezione - Scala 1:50



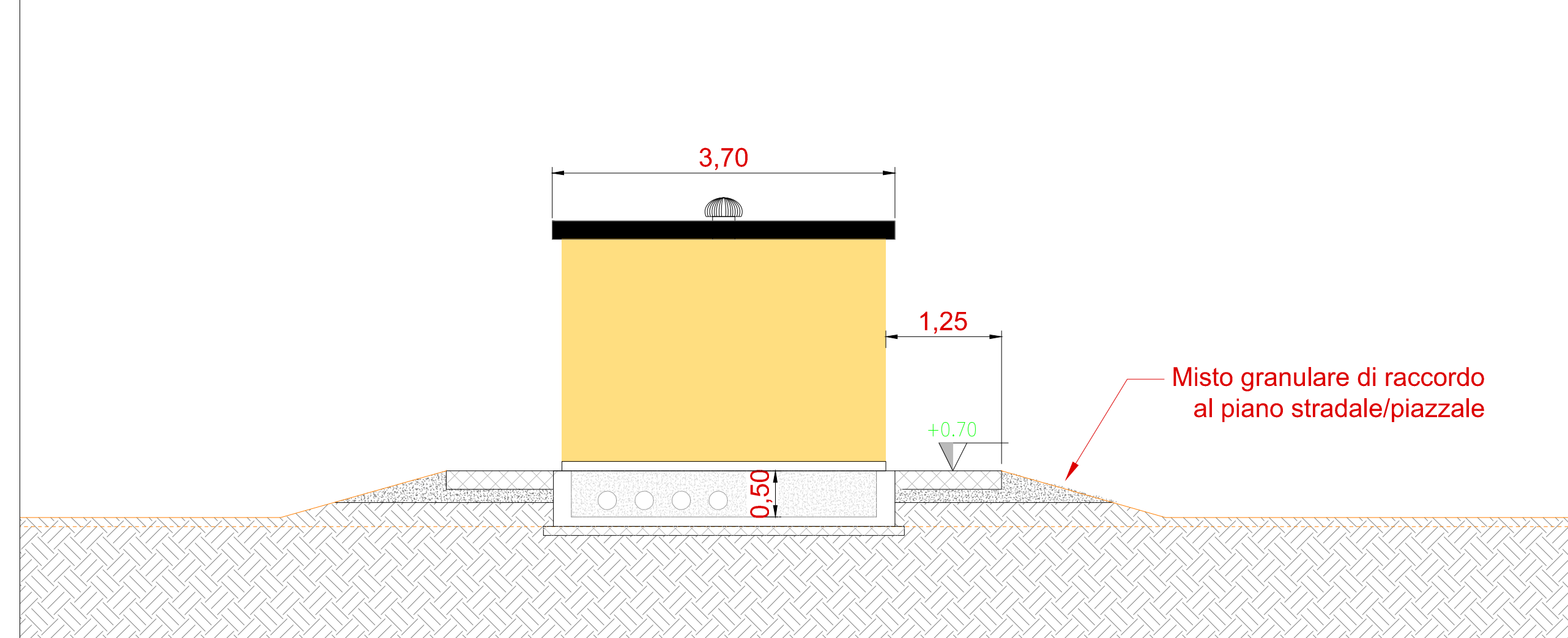
Vista A - Scala 1:50



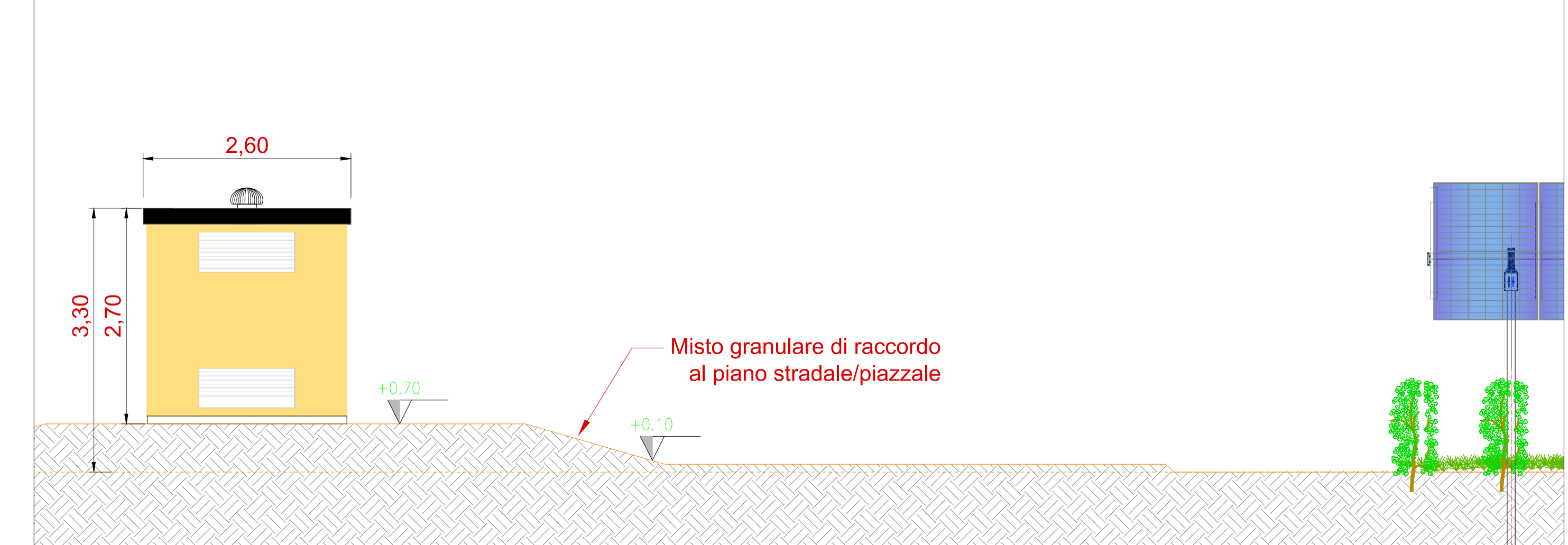
Pianta fondazioni - Scala 1:50



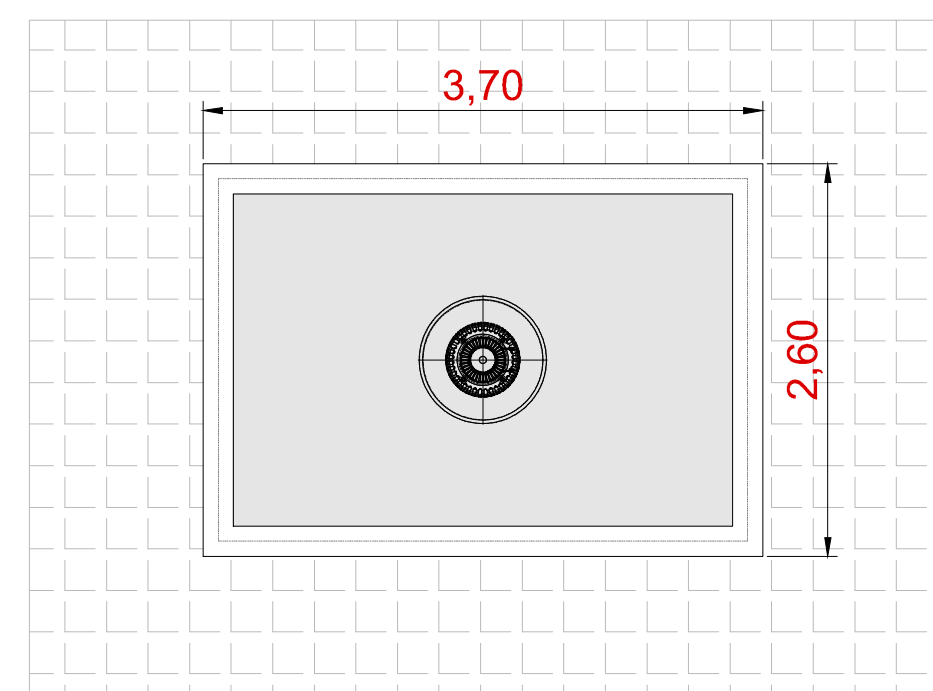
Vista B - Scala 1:50



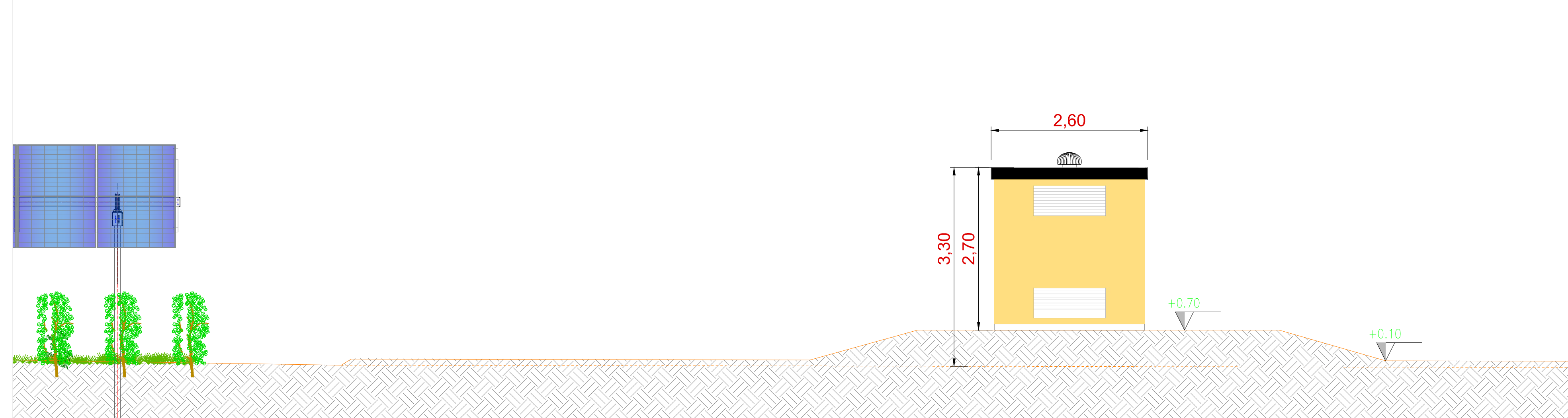
Vista C - Scala 1:50



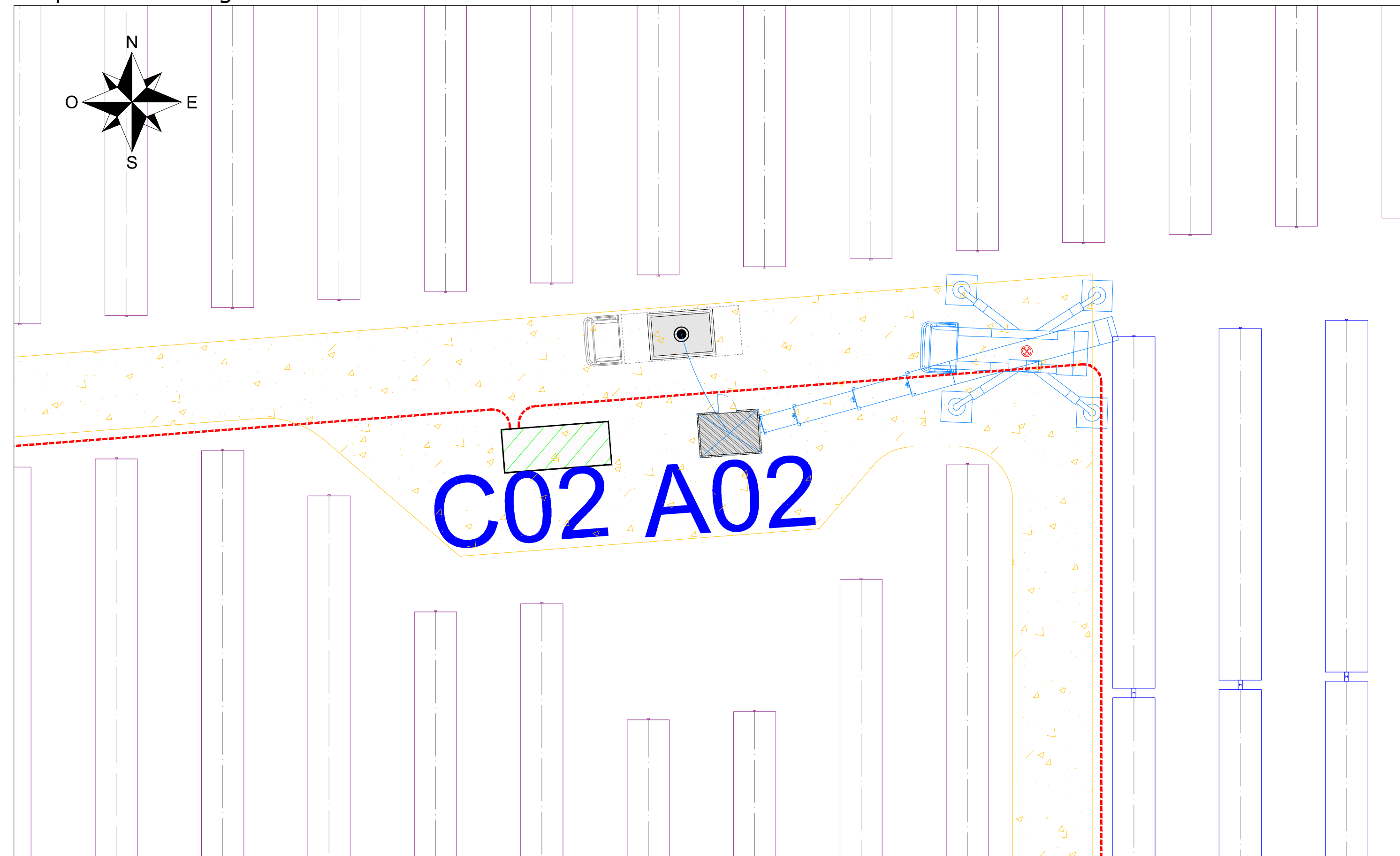
Vista dall'alto - Scala 1:50



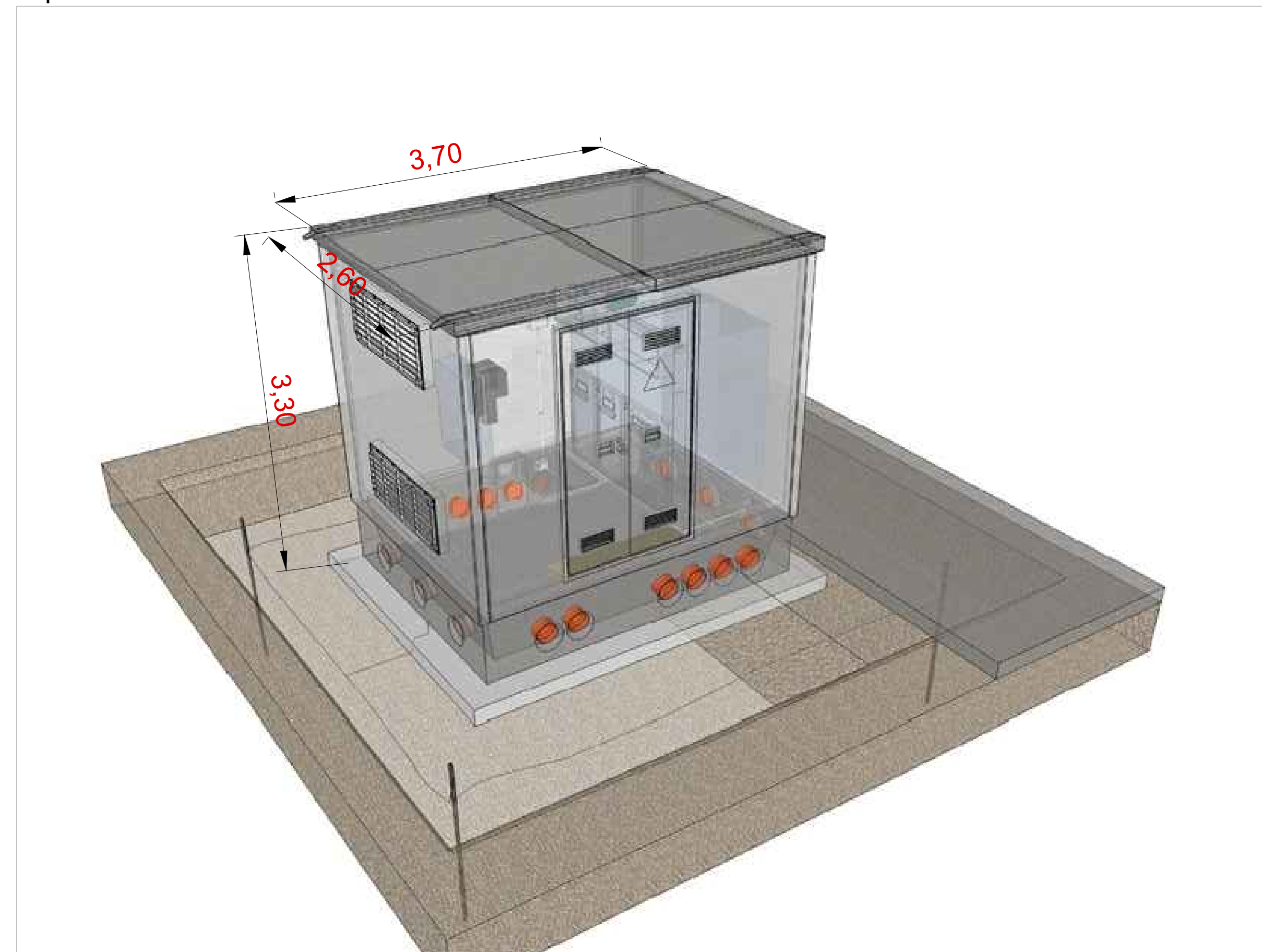
Vista D - Scala 1:50



Inquadramento generale - Aree di manovra cabina ausiliaria - Scala 1:200



Tipico 3D cabina ausiliaria



COMITENTE: ENGIE GRILLO SRL		STUDIO DI PROGETTAZIONE: Ing. Daniele Cavallo Via C. del Croix, 55 - 72022 - Latio (BR)	
Q	Com-23	EMESSO PER ITER AUTORIZZATIVO	CS DC PL
REV.	DATE	DESCRIPTION	BY EKD APP.
REVISIONS			
Impianto Agrivoltaico integrato innovativo denominato "Grillo" avente potenza d'impianto di 53,97 MW (45MW in immissione) con annesso SdA della potenza di 10MW e 80MWh di capacità di accumulo e relative opere connesse Comuni di Mazara del Vallo e Marsala (TP)		APPROVED FOR CONSTRUCTION	
PROGETTO DEFINITIVO IMPIANTO AGRIVOLTAICO E OPERE CONNESSE		DWG. REV. DATE SIGNATURE ORDER N° SUPPLIER CONTRACT N°	
TAV.20 Tipico cabina ausiliaria		SUBPROJECT CODE: THIS DWG. SUPERSEDES BY:	
THIS DRAWING IS THE PROPERTY OF ENGIE GRILLO SRL AND IS LOANED WITHOUT CONSIDERATION OTHER THAN THE BARRAMEN'S AGREEMENT THAT IT SHALL NOT BE REPRODUCED, COPIED, LOAN, OR DISPOSED OF IN ANY MANNER, WITHOUT THE WRITTEN PERMISSION OF ENGIE GRILLO SRL. THE DRAWING IS COVERED BY PATENTS.		SCALE: Varie REV. SHEET OF	
CAD FILE NAME:		AQ	