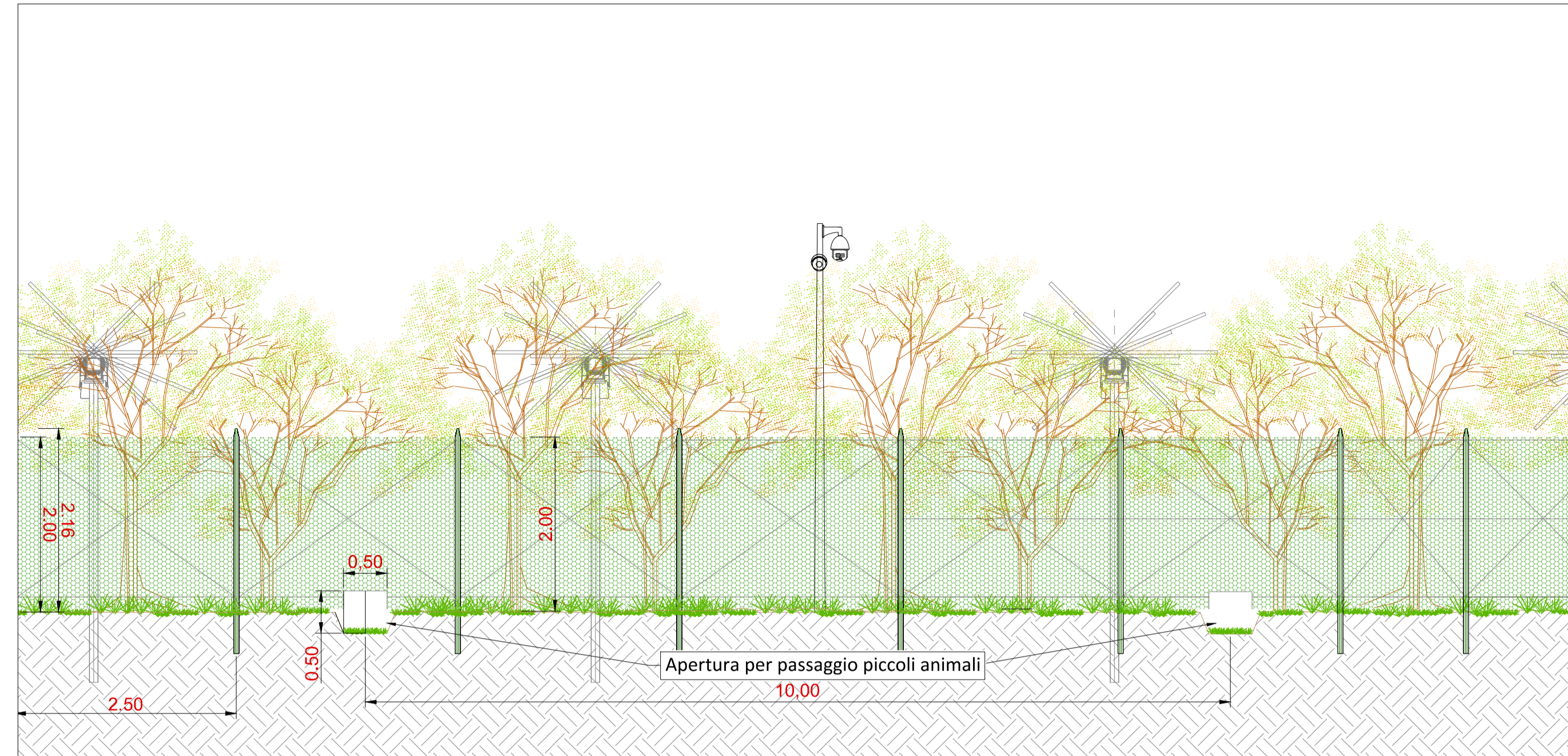
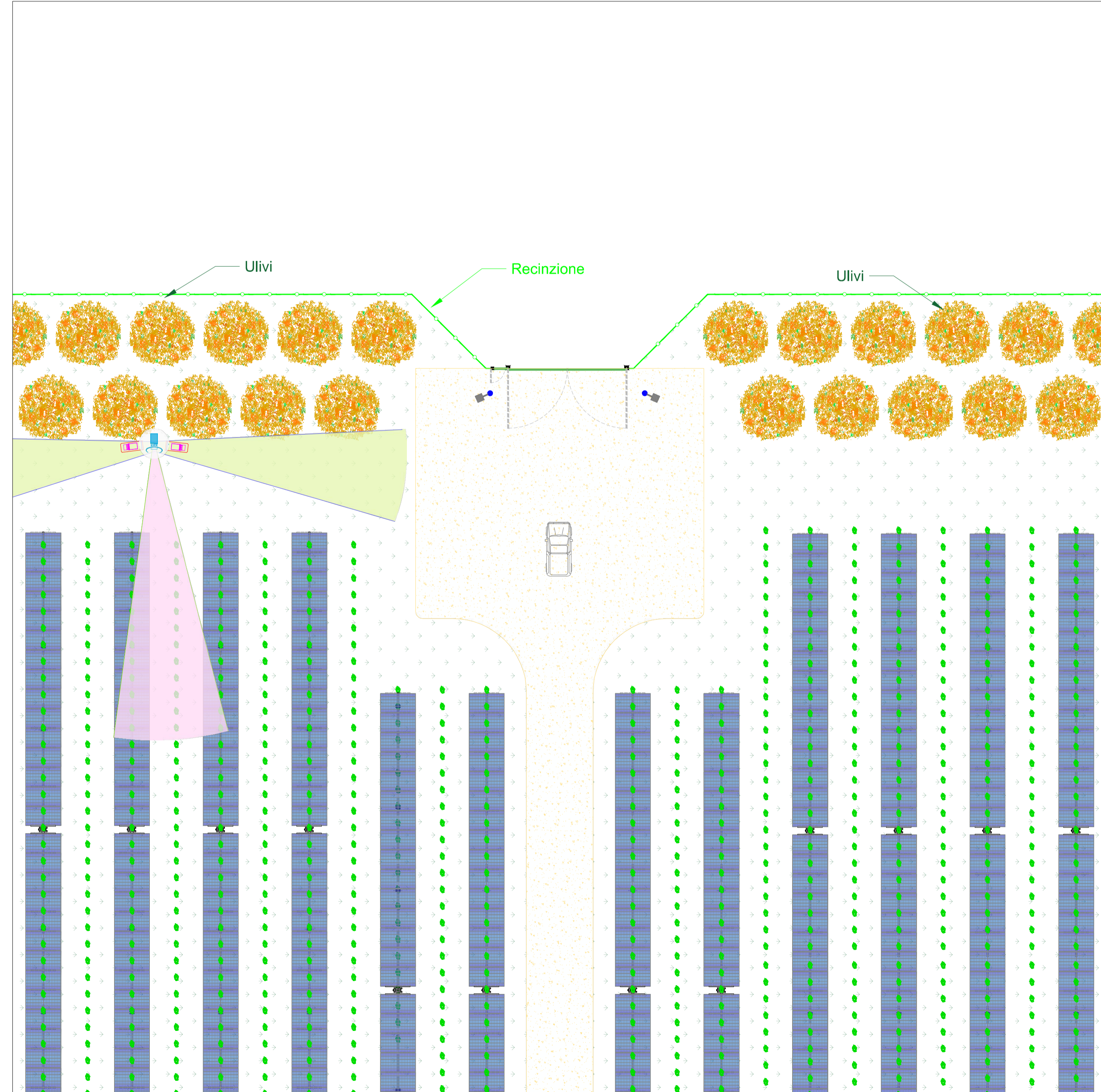


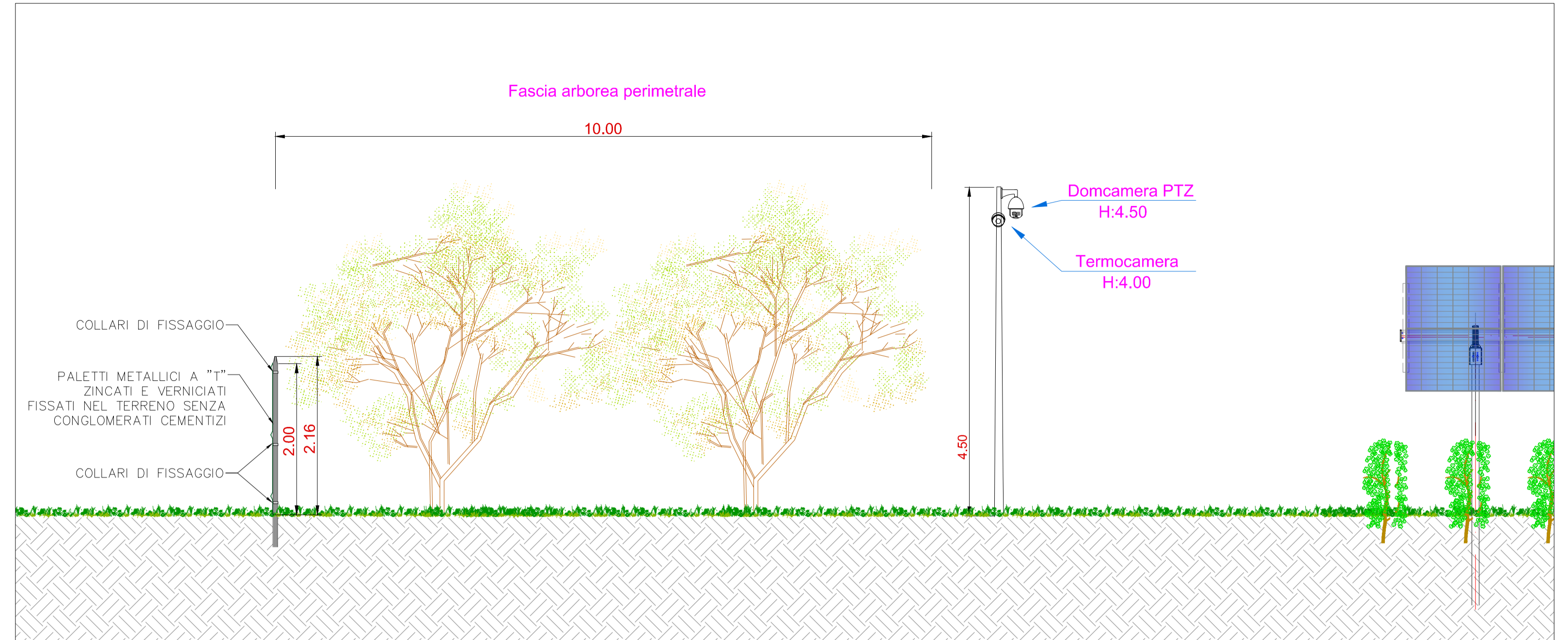
Vista frontale - Tipologia C - Scala 1:50



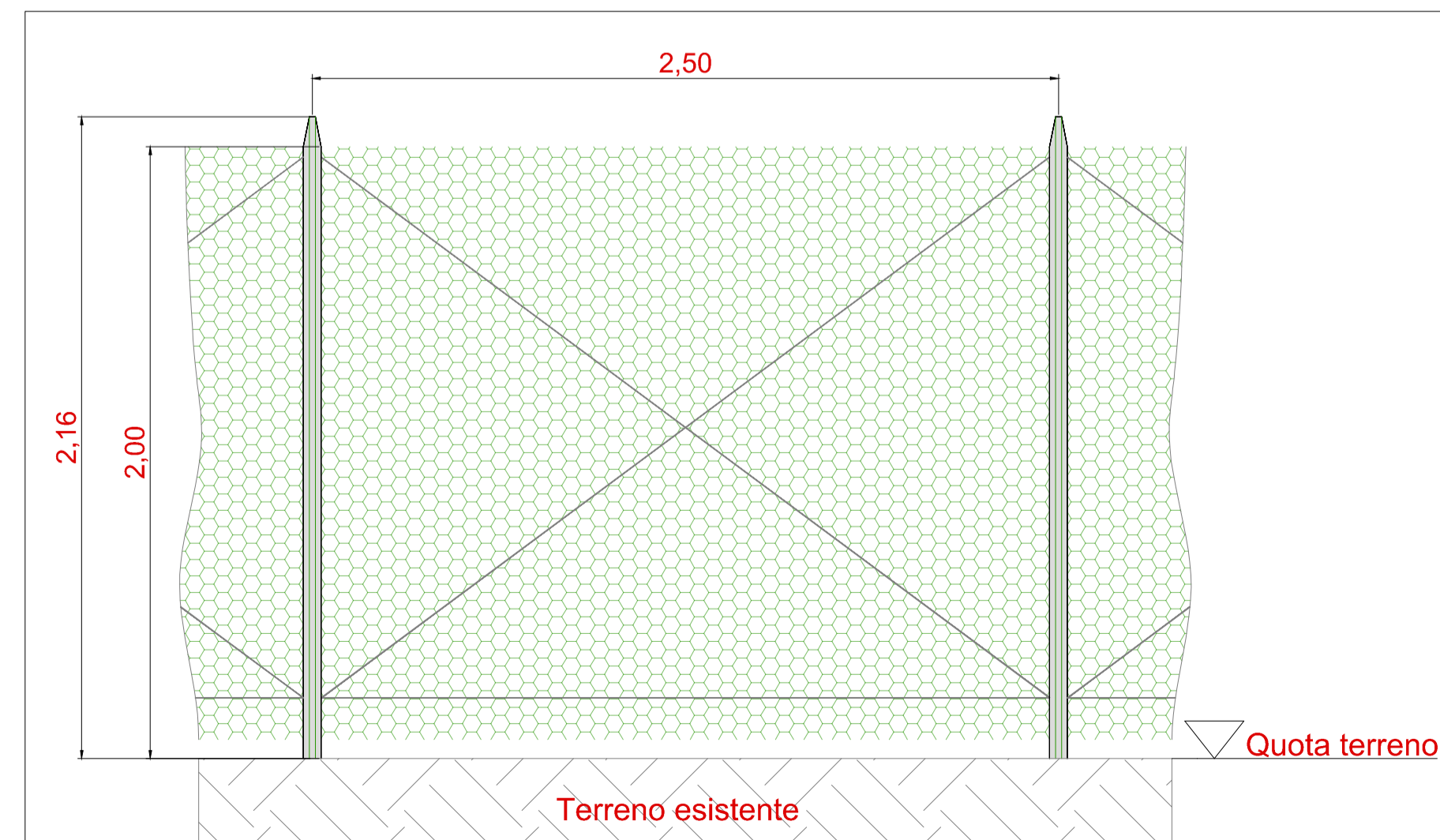
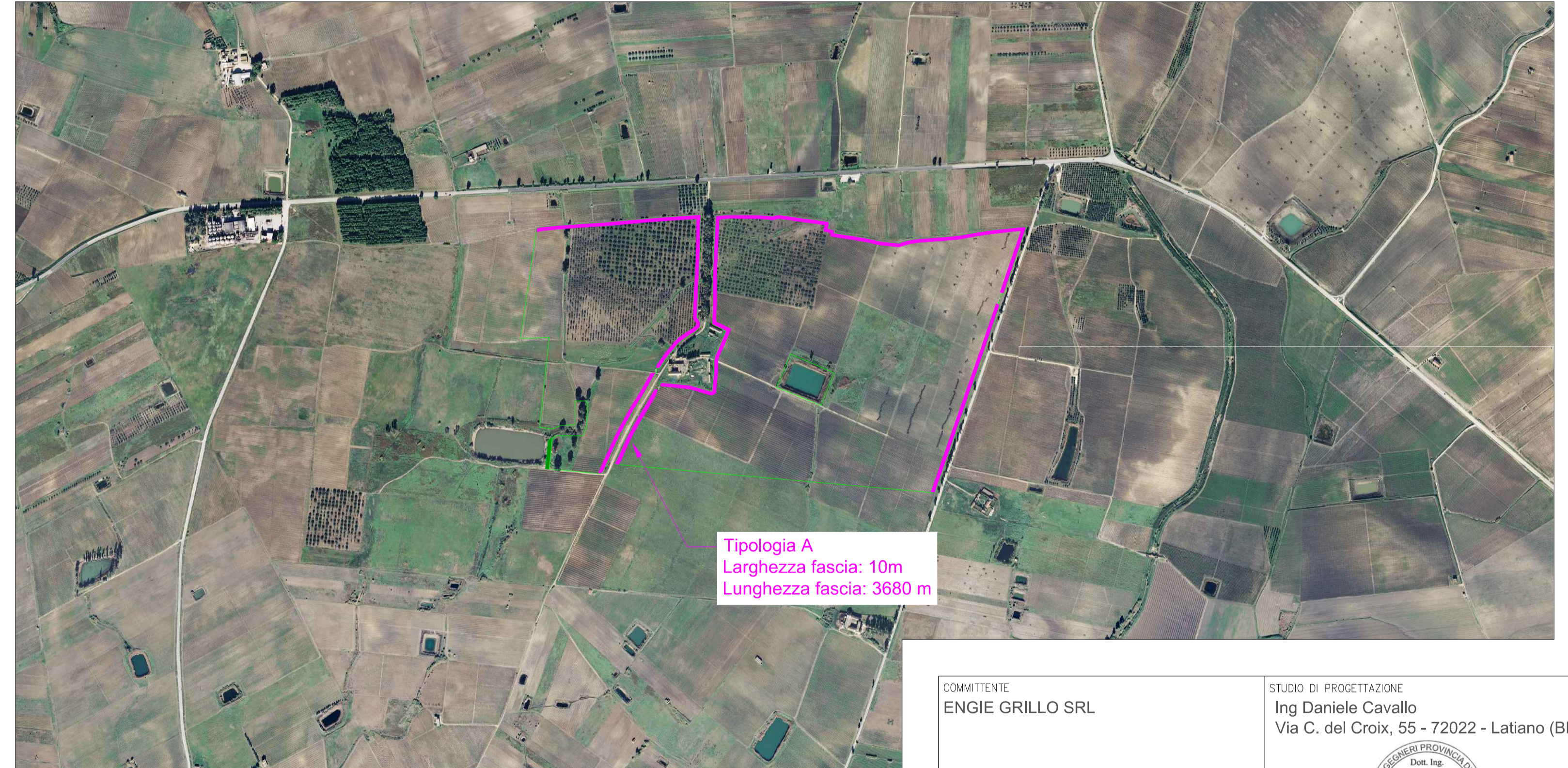
Pianta - Tipologia C - Scala 1:200



Sezione trasversale - Tipologia C - Scala 1:50



Schema planimetrico recinzione - Scala 1:10000



COMMITTENTE ENGIE GRILLO SRL		STUDIO DI PROGETTAZIONE Ing Daniele Cavallo Via C. del Croix, 55 - 72022 - Latiano (BR)	
0 REV.		Gen-23 DATE	
EMESSO PER ITER AUTORIZZATIVO DESCRIPTION		CS DC PL BY CHD APP.	
REVISIONS			
Impianto Agrivoltaiico integrato innovativo denominato "Grillo" avente potenza d'impianto di 53,97 MW (45MW in immissione) con annesso SdA della potenza di 10MW e 80MWh di capacità di accumulo e relative opere connesse Comuni di Mazara del Vallo e Marsala (TP)		APPROVED FOR CONSTRUCTION DWG. REV. DATE SIGNATURE	
PROGETTO DEFINITIVO IMPIANTO AGRIVOLTAICO E OPERE CONNESSE		ORDER N° SUPPLIER	
SUBJECT: TAV.25a Tipico recinzione, sistema TVCC e fascia arborea		CONTRACT N° SUBPROJECT CODE: THIS DWG. SUPERSEDED BY SCALE Varie	
THIS DRAWING IS THE PROPERTY OF ENGIE GRILLO SRL AND IS LOANED WITHOUT CONSIDERATION OTHER THAN THE BORROWER'S AGREEMENT THAT IT SHALL NOT BE REPRODUCED, COPIED, LENT OR DISPOSED OF DIRECTLY OR INDIRECTLY, NOR USED FOR ANY PURPOSE OTHER THAN THAT FOR WHICH IT IS SPECIFICALLY FURNISHED. THE APPARATUS SHOWN IN THE DRAWING IS COVERED BY PATENTS.		FWI DWG N° REV. SHEET OF A1	
CAD FILE NAME:			