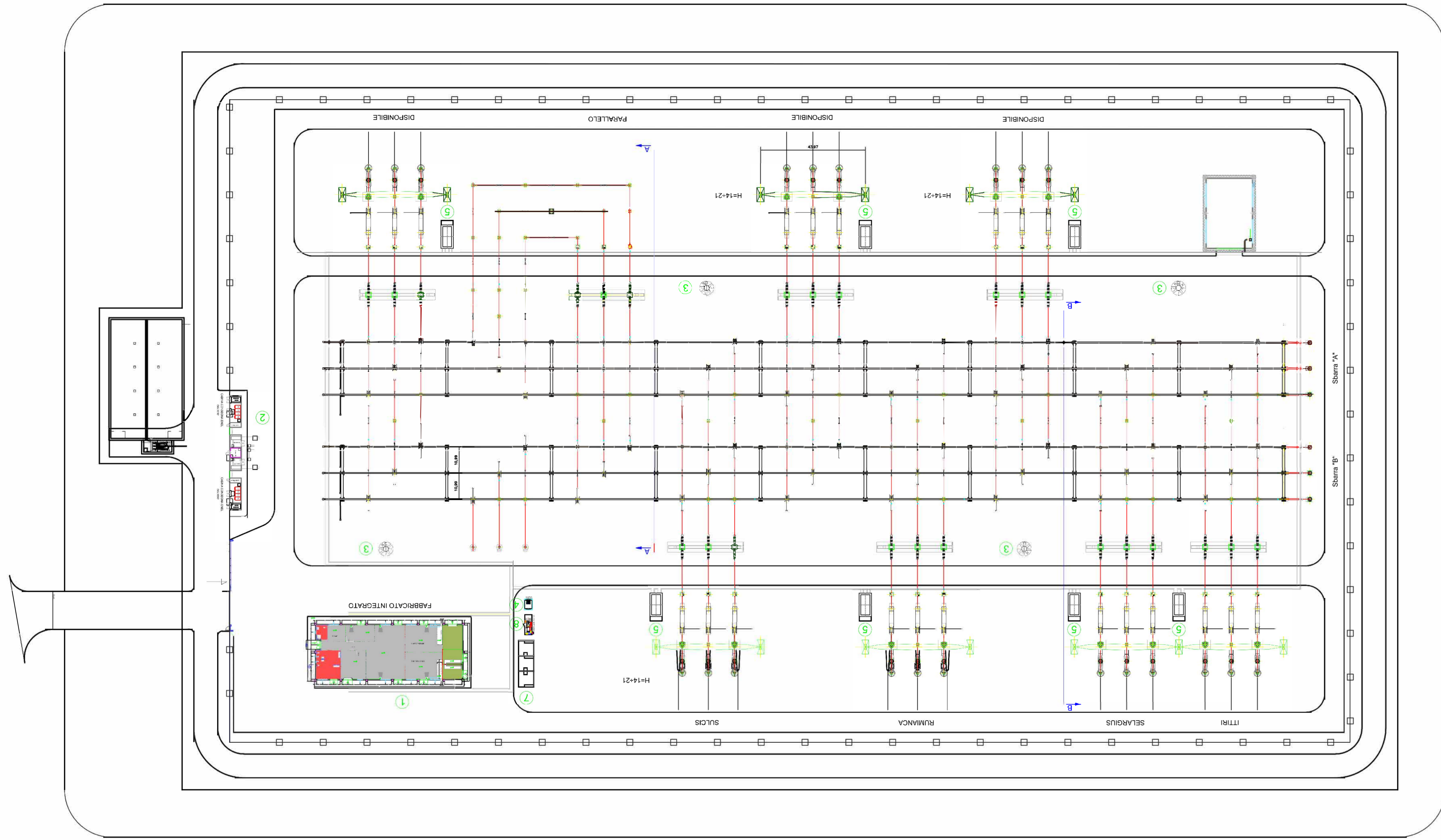


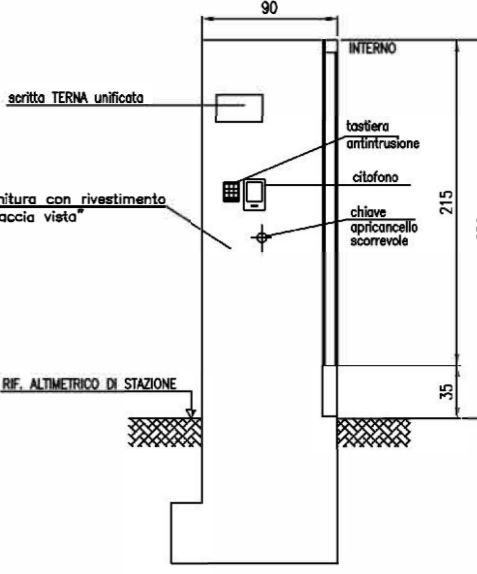
NUOVA STAZIONE VILLASOR 380 - PIANTE E SEZIONI

(Scala 1:500)

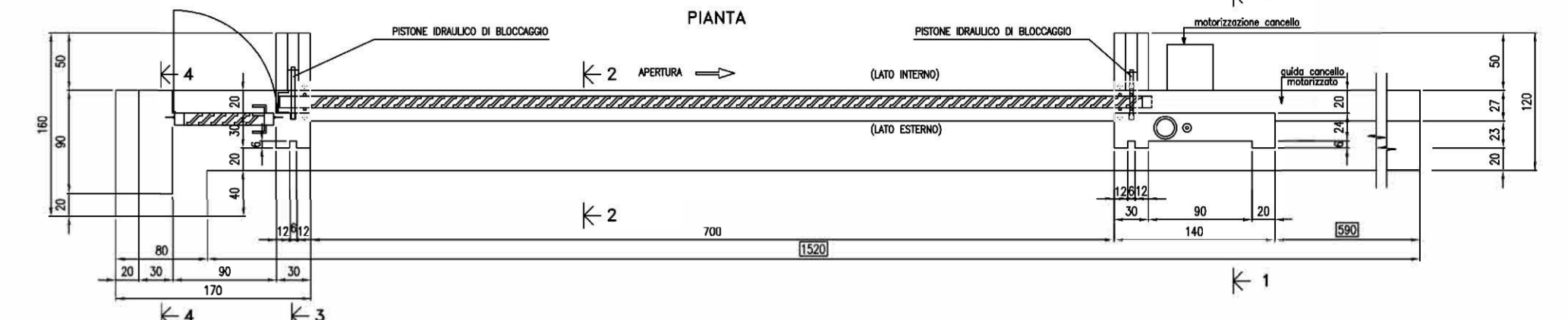
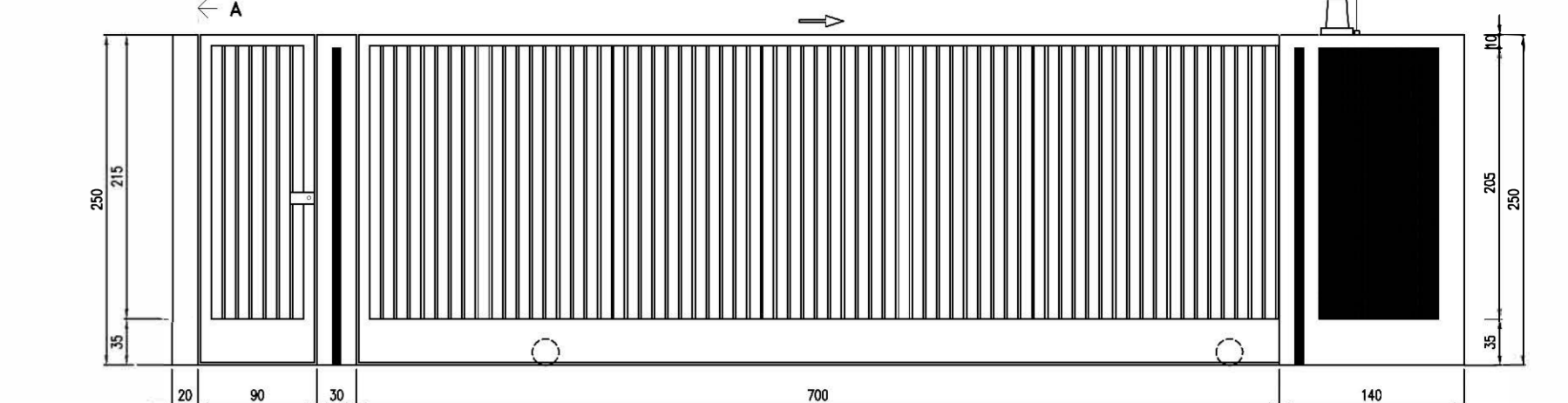


PARTICOLARE CANCELLO
(SCALA 1:200)

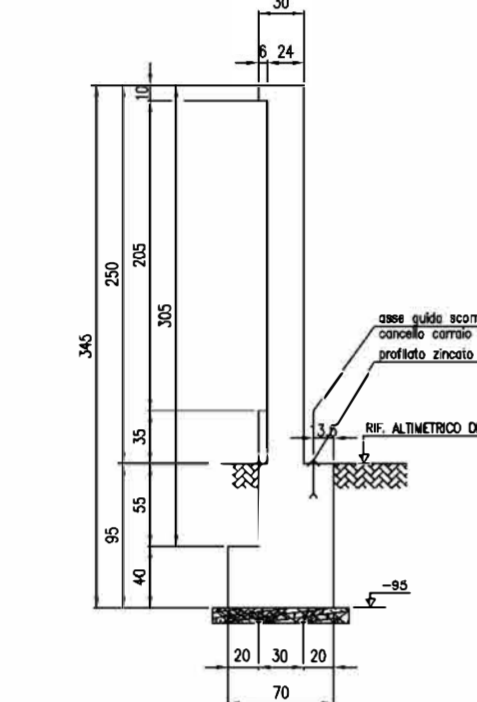
SEZIONE A-A



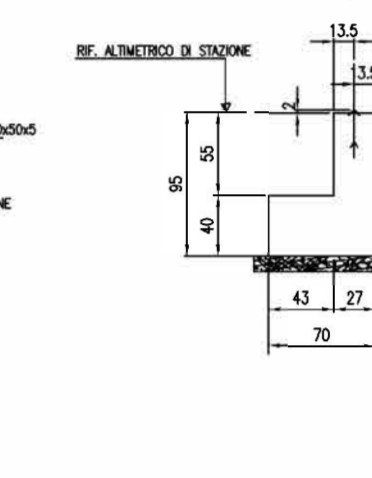
PROSPETTO



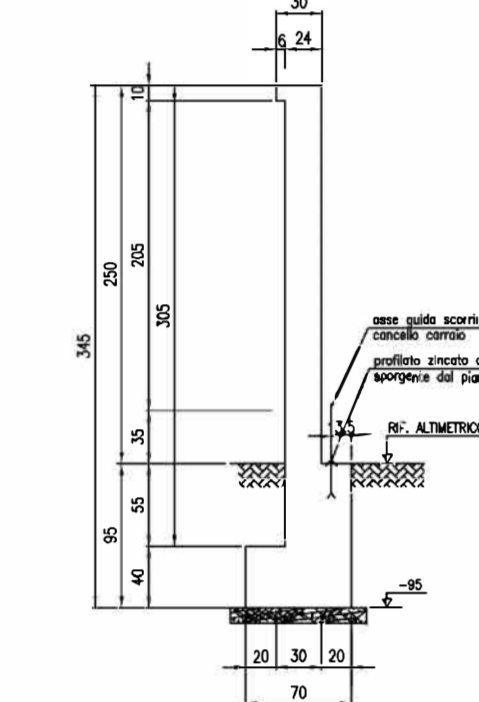
SEZIONE 1-1



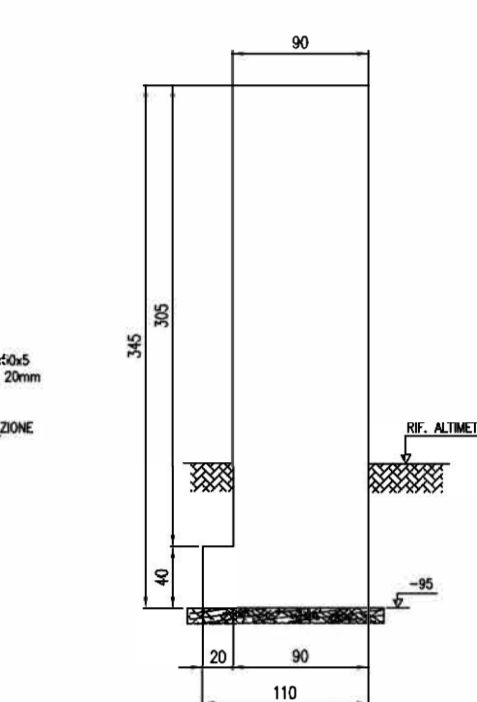
SEZIONE 2-2



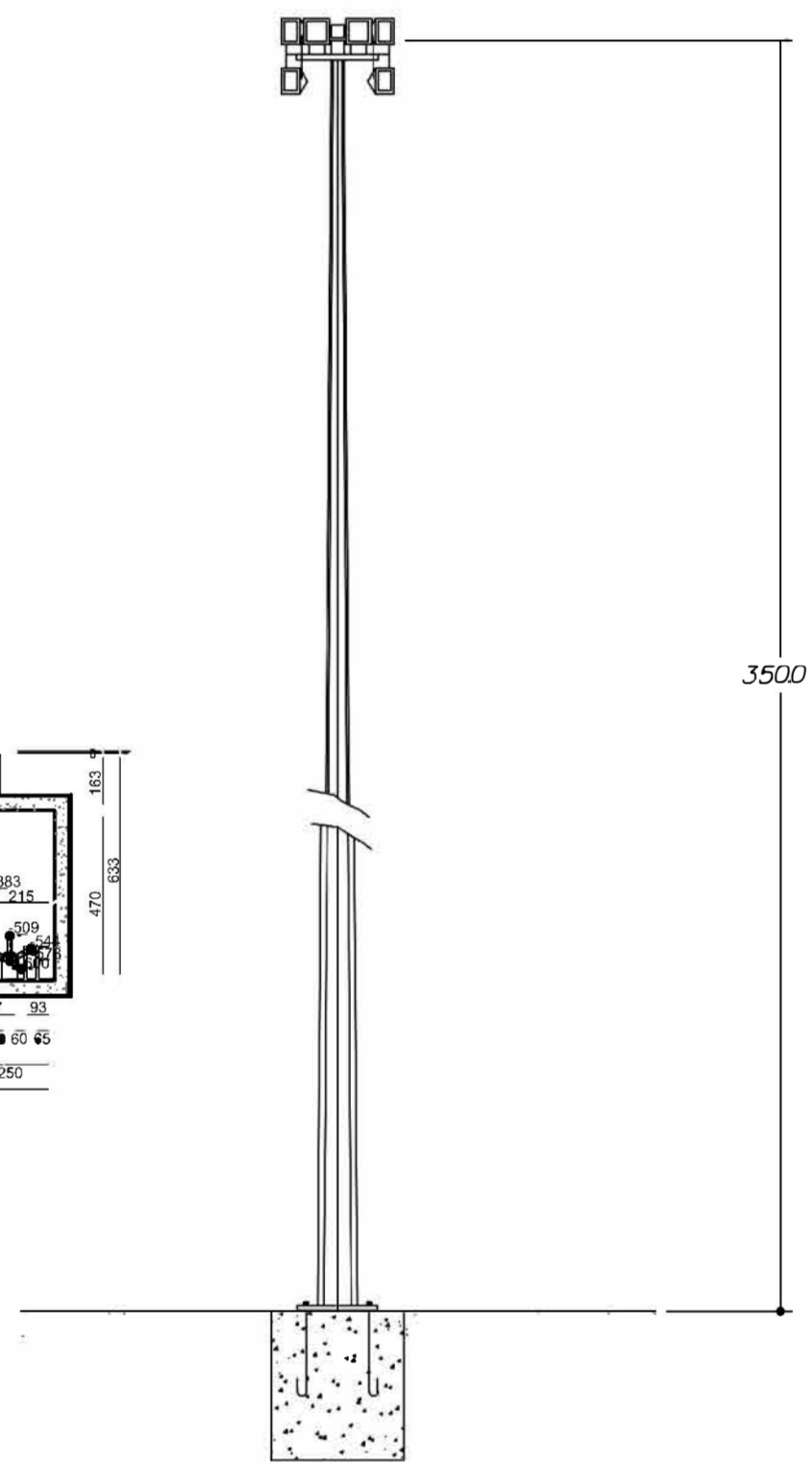
SEZIONE 3-3



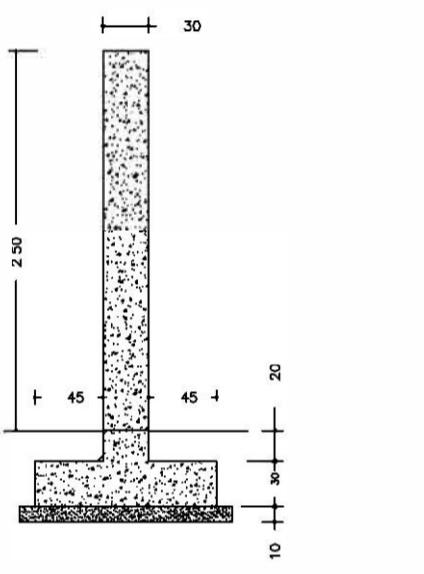
SEZIONE 4-4



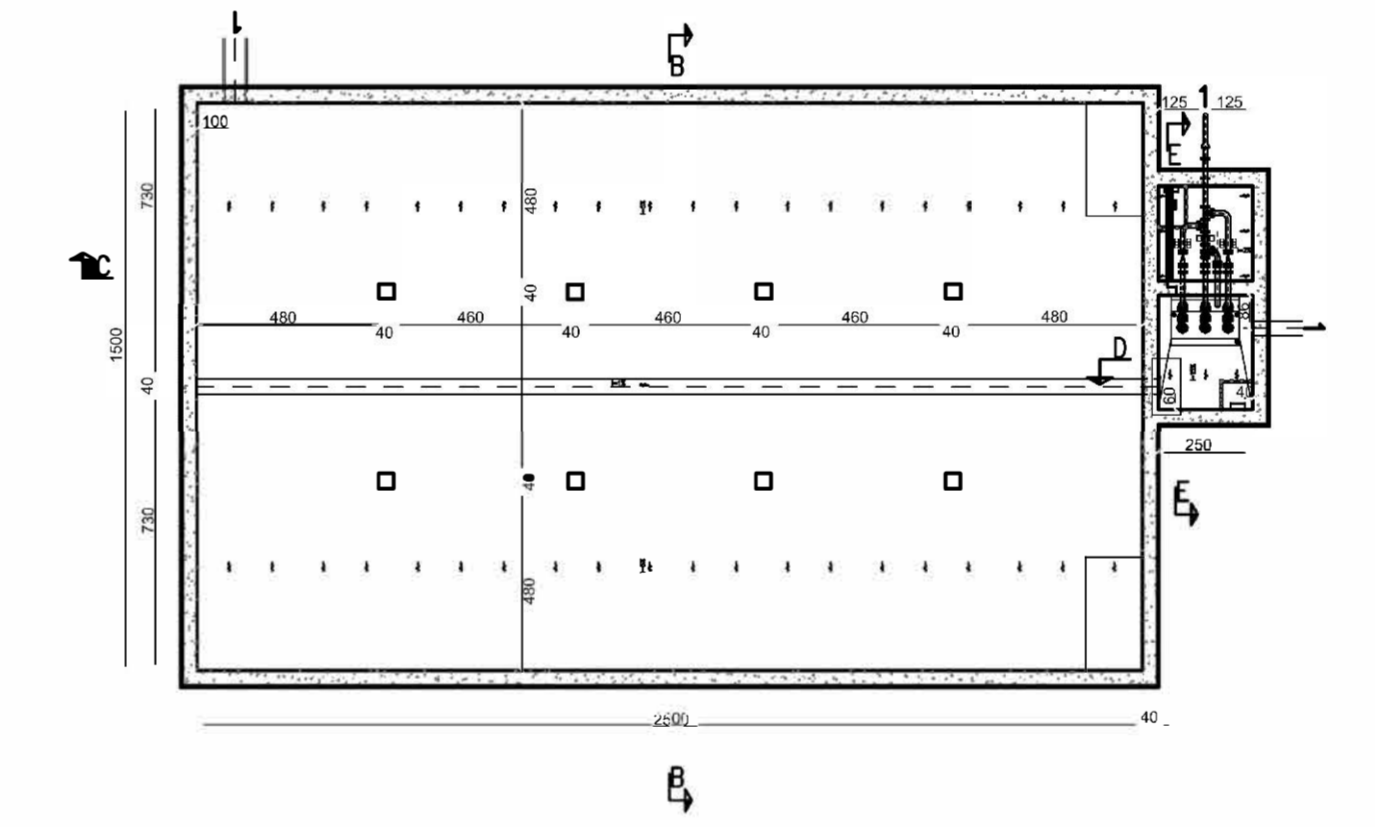
PARTICOLARE TORRE FARO
(SCALA 1:200)



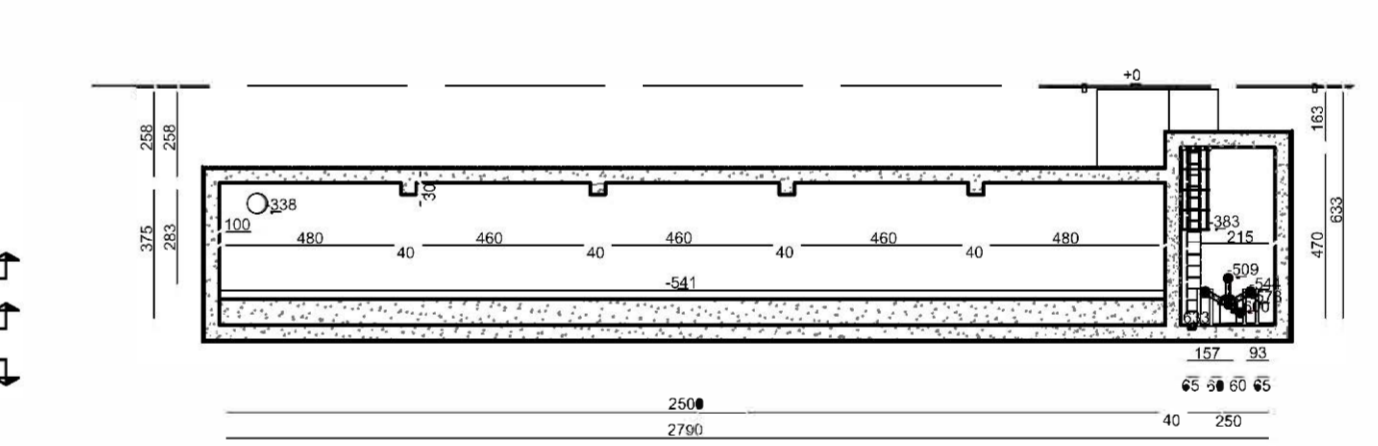
PROSPETTO PARTICOLARE RECINZIONE
(SCALA 1:50)



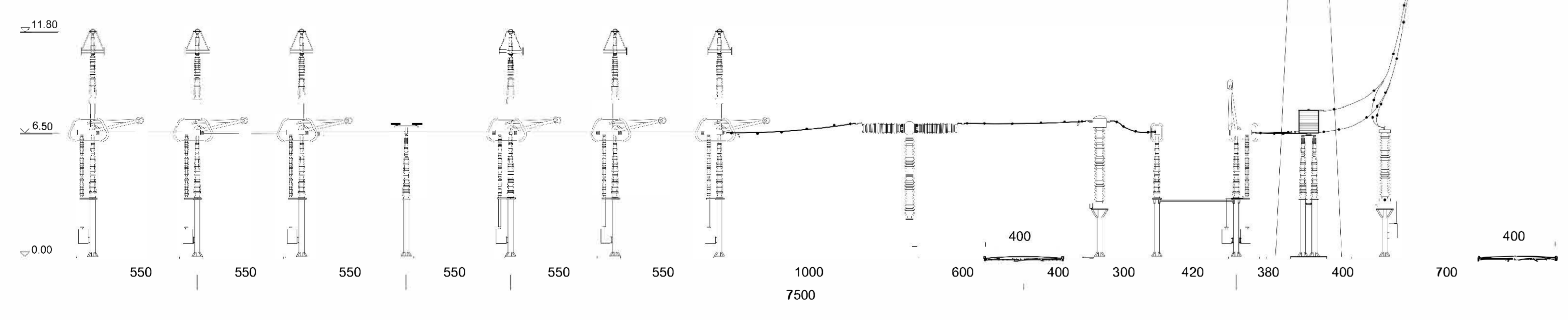
PIANTA INTERNO MANUFATTO
(SCALA 1:200)



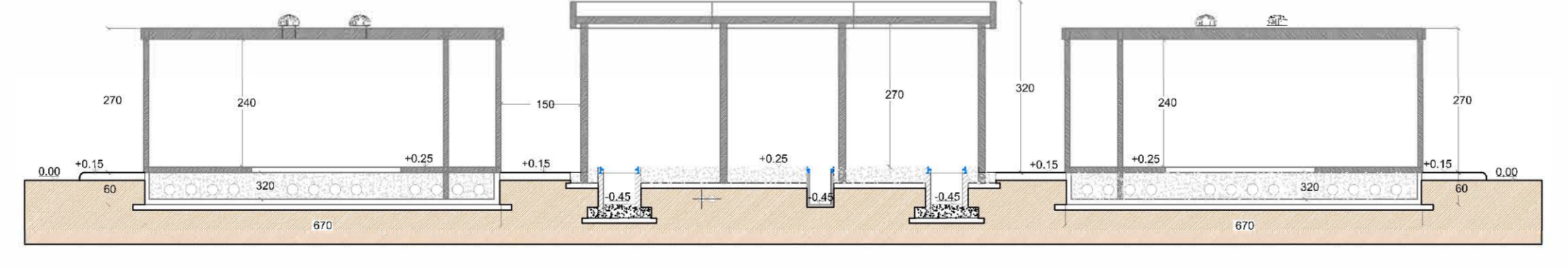
SEZIONE C-C
(SCALA 1:200)



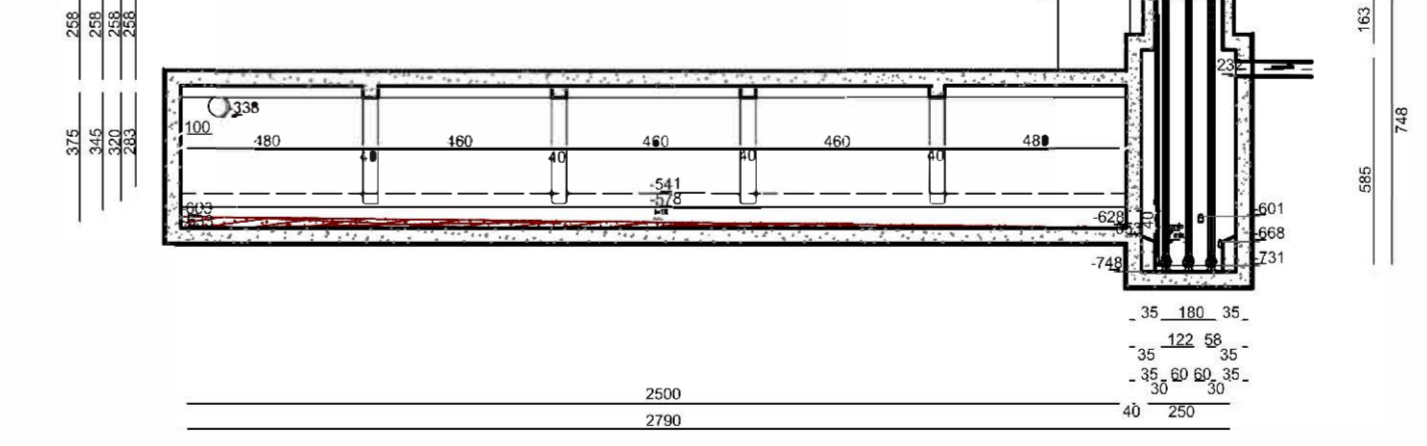
SEZIONE B-B
(SCALA 1:200)



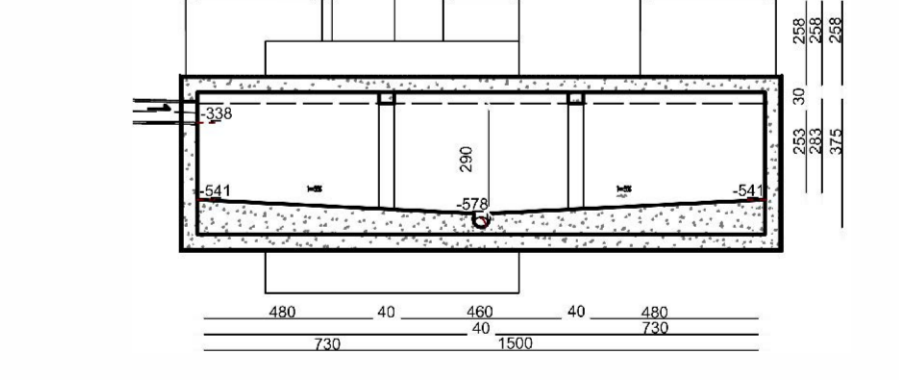
SEZIONE A-A EDIFICIO CONSEGNA MT E LCT
(SCALA 1:100)



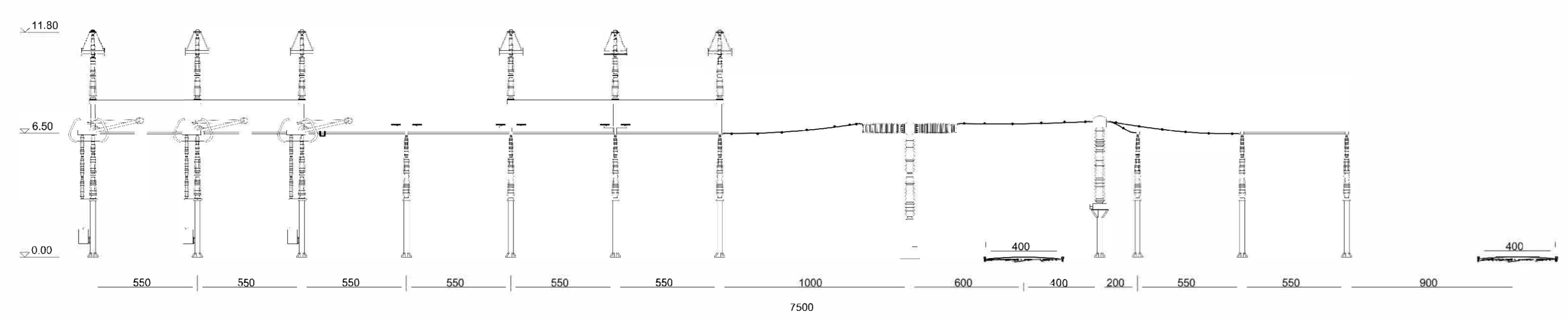
SEZIONE A-A
(SCALA 1:200)



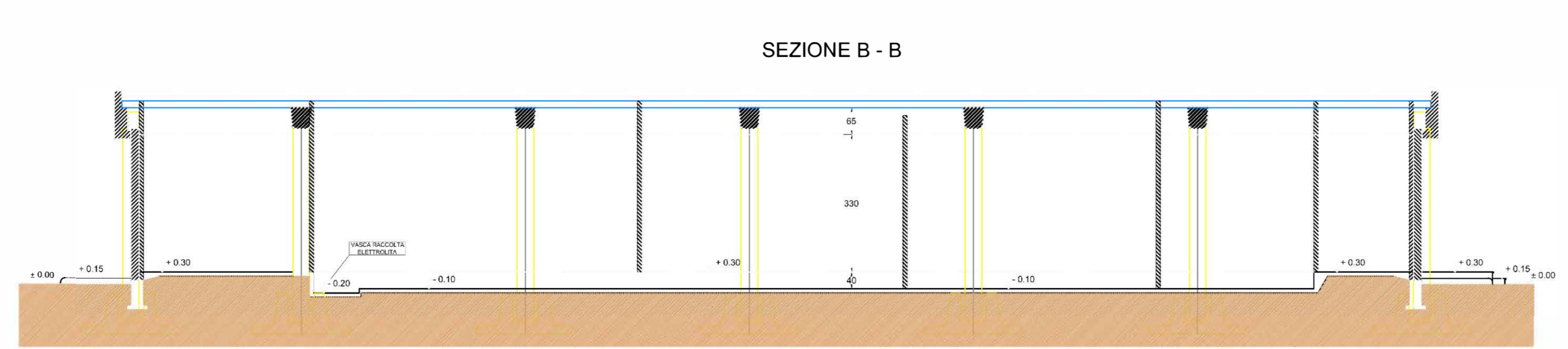
SEZIONE B-B
(SCALA 1:200)



SEZIONE A-A
(SCALA 1:200)

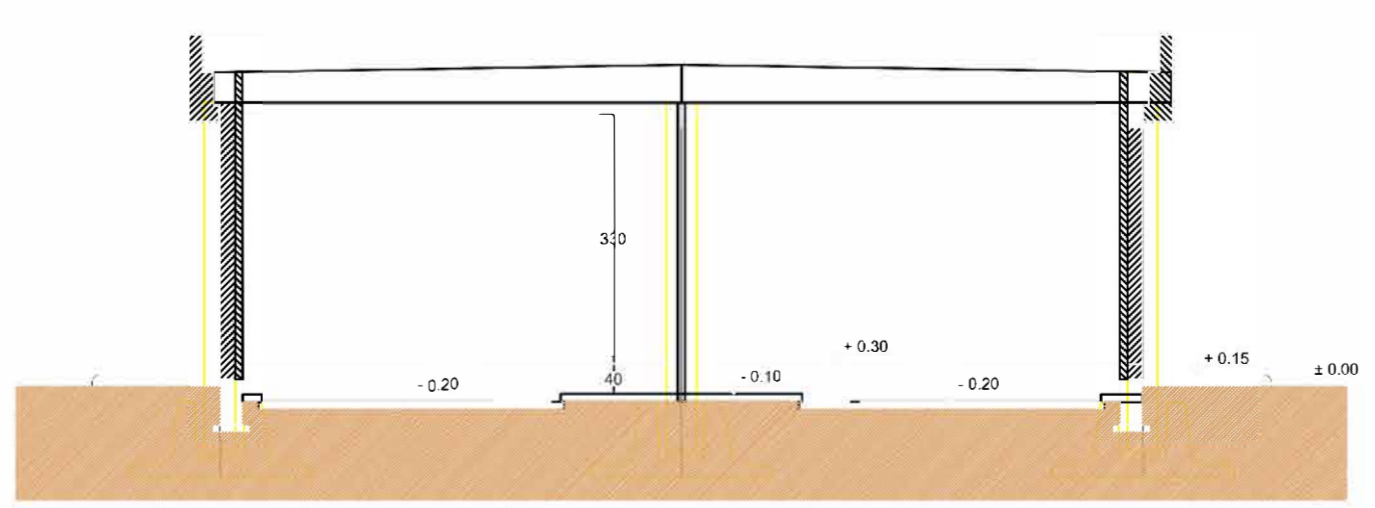


SEZIONI EDIFICIO INTEGRATO
(SCALA 1:100)



SEZIONE B - B

SEZIONE A - A



SCALA	VERE	DESCRIZIONE	FORMATO	AP
REV	DATA			
01	Gennaio 2017	PRELIMINARE PER APPROVAZIONE		



Ichnusa wind power srl
 Progetto Definitivo
PARCO EOLICO FLOTTANTE NEL MARE DI SARDEGNA SUD OCCIDENTALE

Ministero dell'Ambiente e della Sicurezza Energetica
 Ministero della Cultura
 Ministero delle Infrastrutture e dei Trasporti

Procedura di Valutazione di Impatto Ambientale ex D.lgs. 152/2006
 Domanda di Autorizzazione Unica ex D.lgs. 387/2003
 Domanda di Concessione Demaniale Marittima ex R.D. 3271/1942

Nuova Stazione Villasor 380
 Pianta e Sezioni

Progetto
 Dott. Ing. Luigi Severini
 Disegnato: T&A 7/16

Elaborazioni
ILStudio
 Engineering & Consulting Studio

NT04
 CO421HT04SMSECO00a

