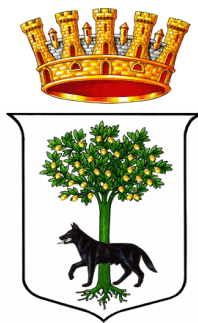




REGIONE PUGLIA



CITTÀ DI LECCE



COMUNE' DI SURBO

COSTRUZIONE ED ESERCIZIO DI UN IMPIANTO "AGROVOLTAICO" DI PRODUZIONE DELL'ENERGIA ELETTRICA DA FONTE FOTOVOLTAICA AVENTE POTENZA IN IMMISSIONE PARI A 78,383 MW CON RELATIVO COLLEGAMENTO ALLA RETE ELETTRICA – IMPIANTO DENOMINATO "SURBO" UBICATO IN AGRO DEL COMUNE DI LECCE E SURBO

progettato e sviluppato da



Via Gen. Giacinto Antonelli n.3
70043
Monopoli (BA)



Ing. Emanuele Verdoscia
Via Villafranca n.42
73041
Carmiano (LE)

DATI CATASTALI: Sezione A Lecce FG. 50 P.IIa 4,21,66
Surbo FG 5 P.IIa 9,10,12,31,41,42
Sezione B Lecce FG 34 P.IIa 27-28



Elaborato

RENDERING E FOTOINSERIMENTI

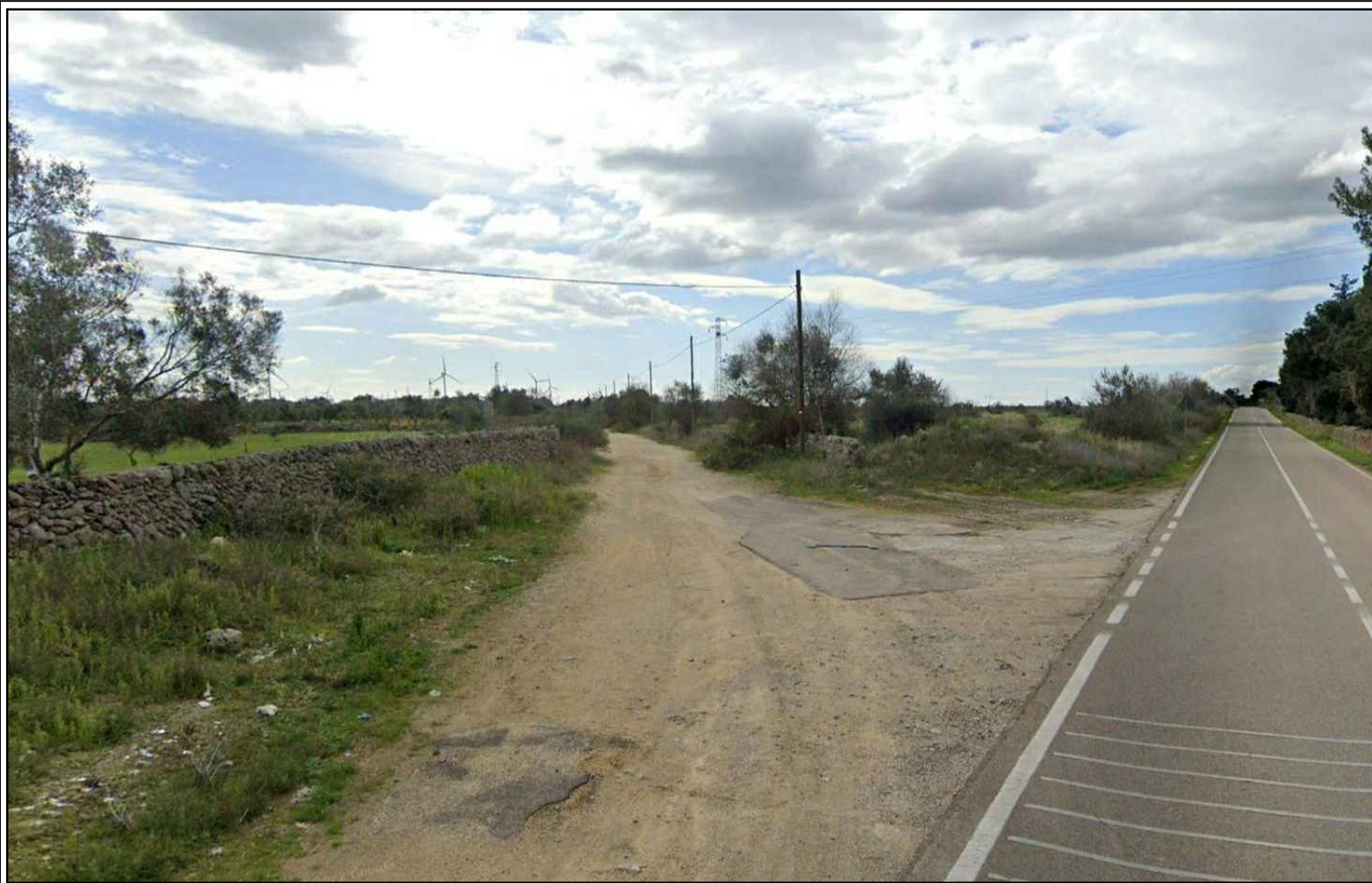
Tecnico

Ing. Emanuele Verdoscia

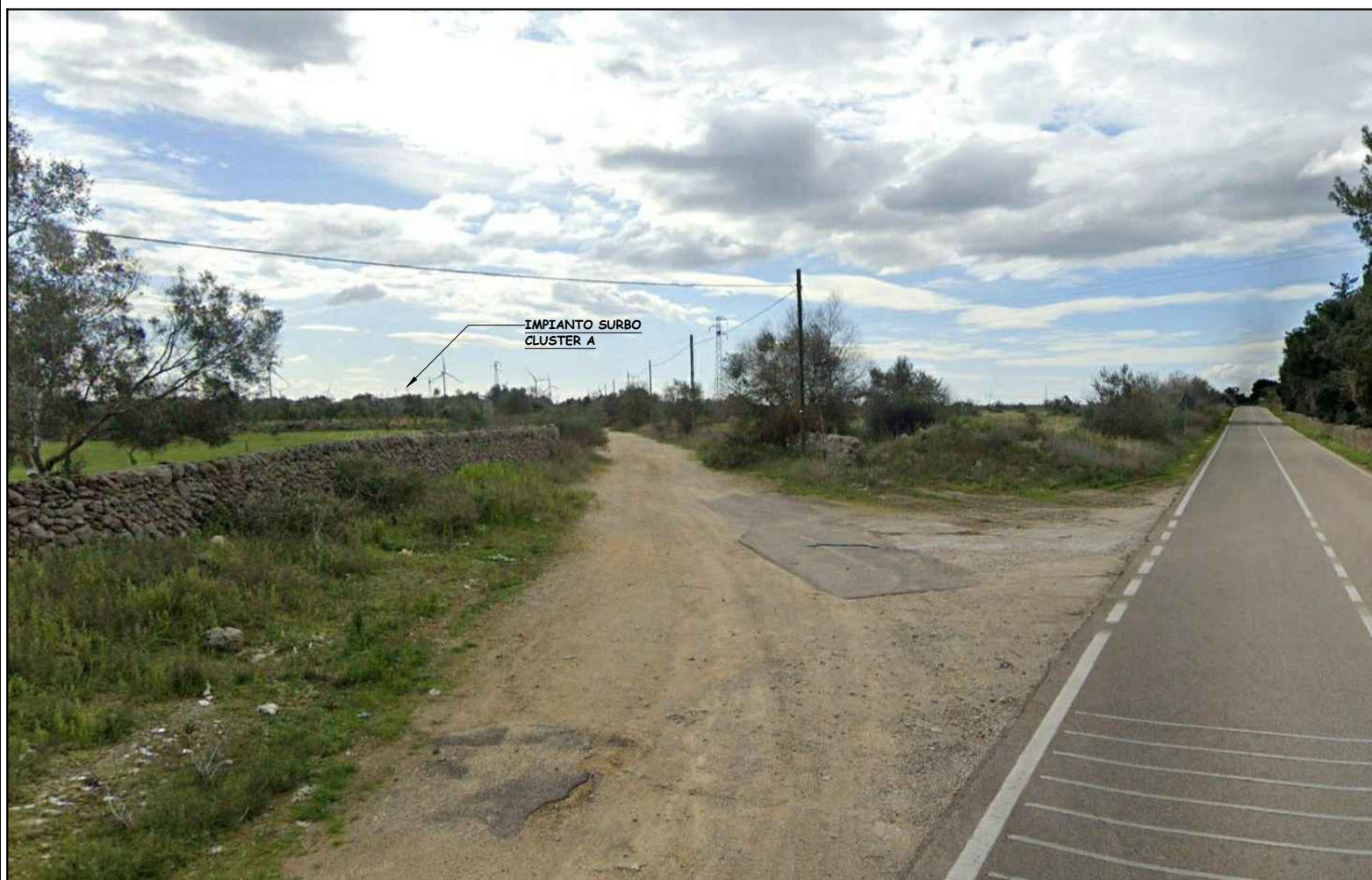




CLUSTER B LECCE



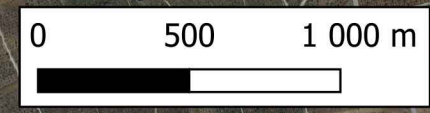
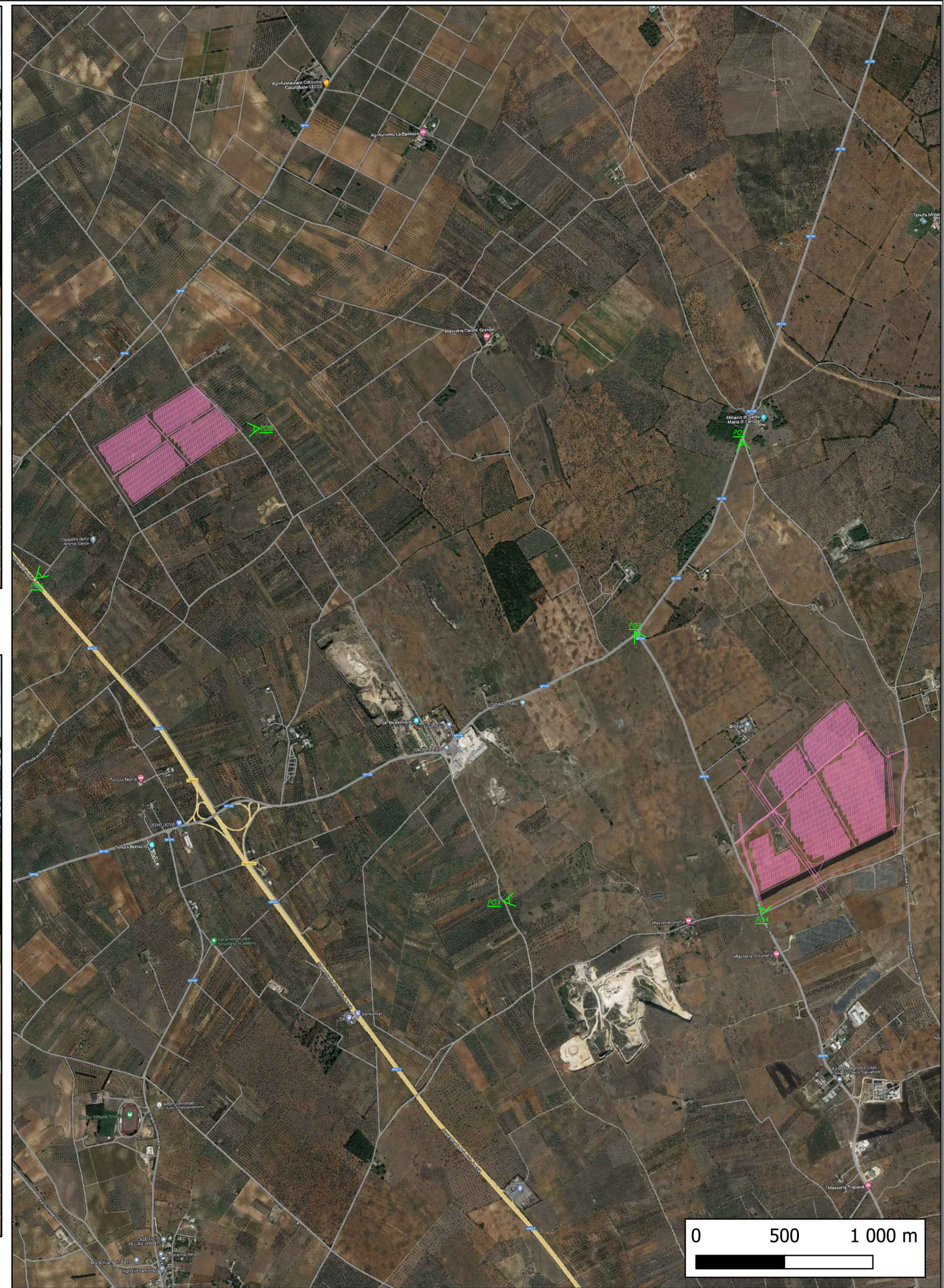
ANTE OPERAM



IMPIANTO SURBO
CLUSTER A

POST OPERAM

PO1





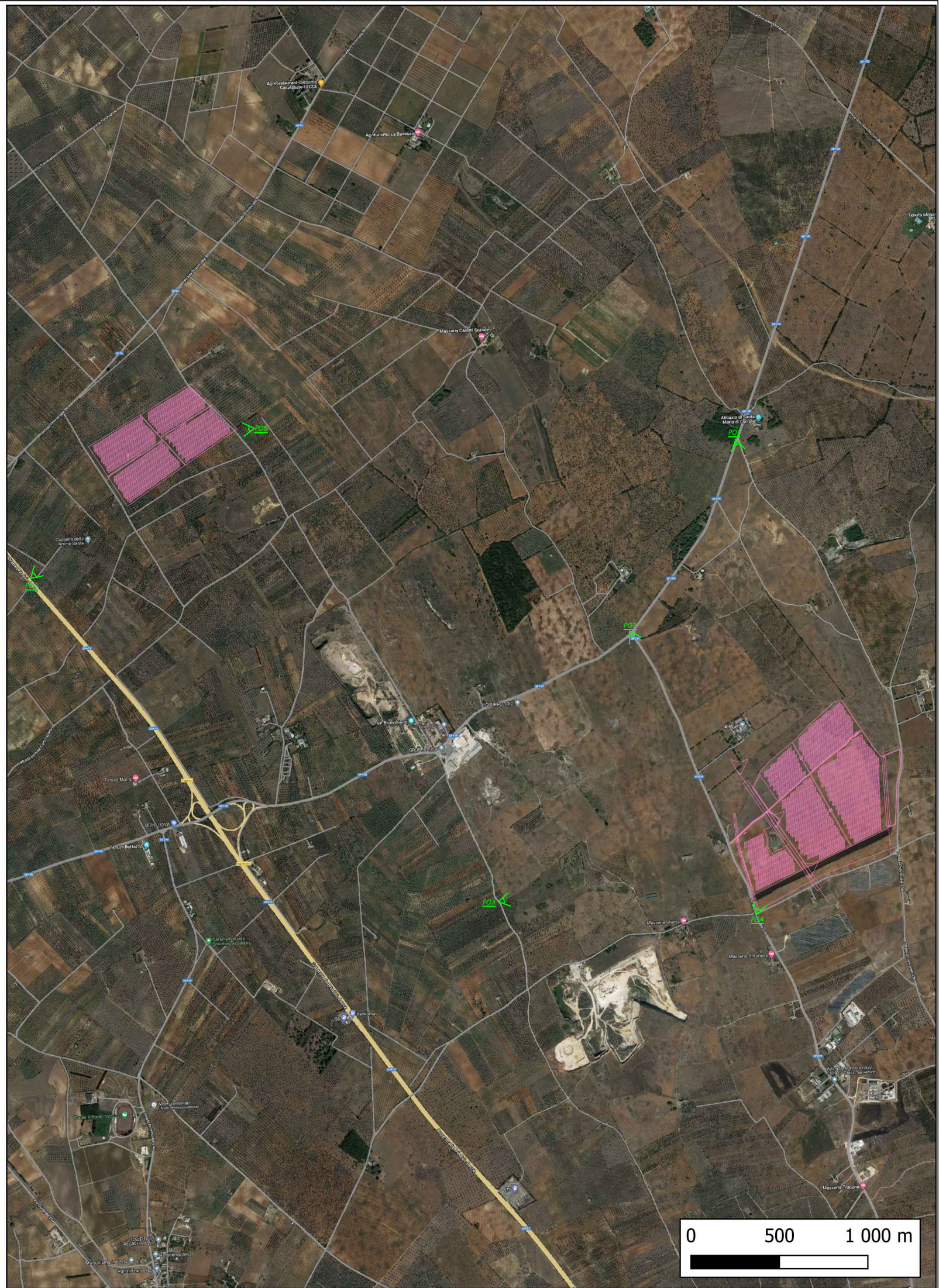
ANTE OPERAM



**IMPIANTO SURBO
CLUSTER A**

POST OPERAM

PO2





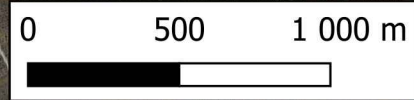
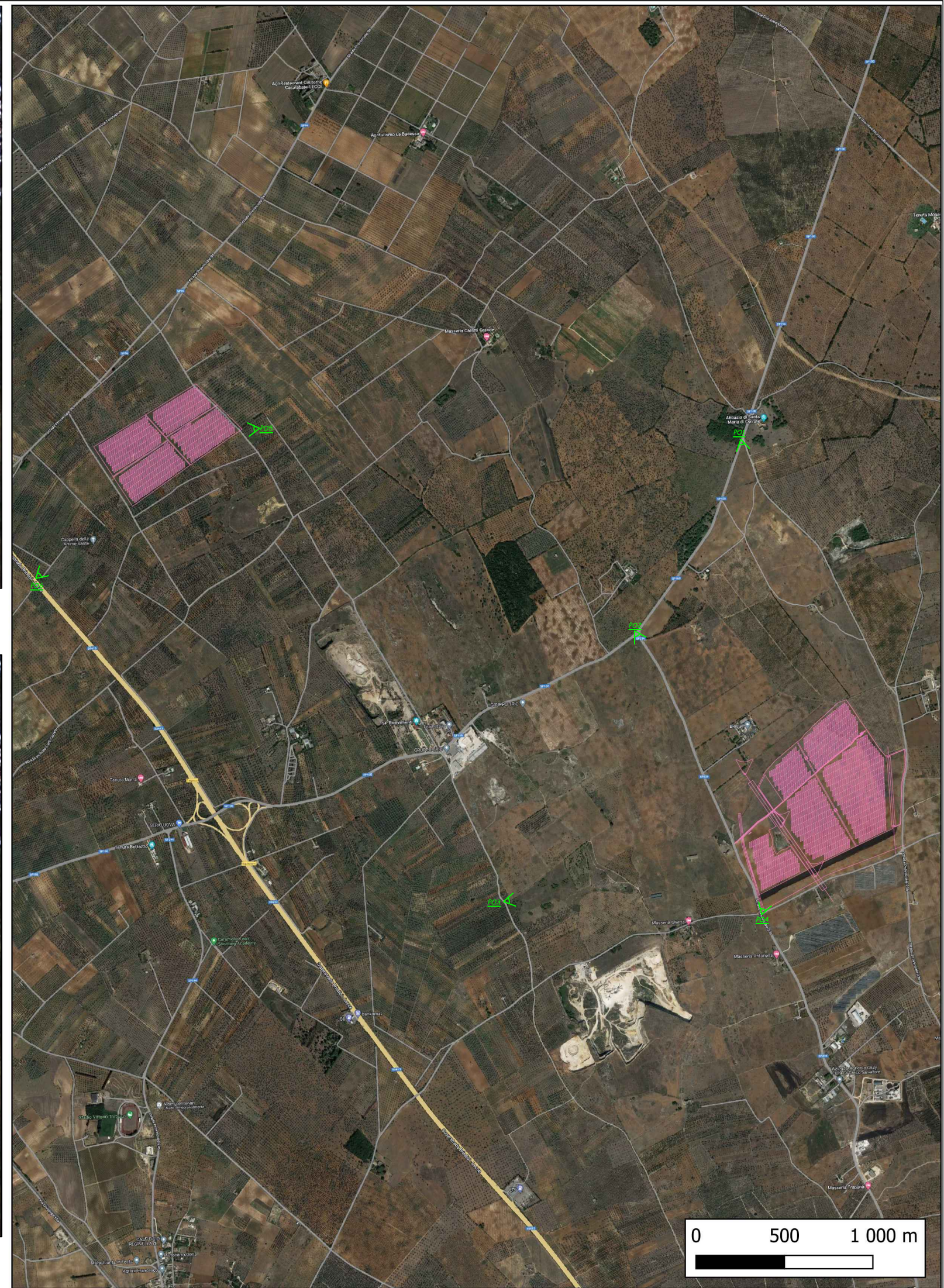
ANTE OPERAM



IMPIANTO SURBO
CLUSTER A

POST OPERAM

PO3



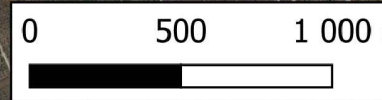
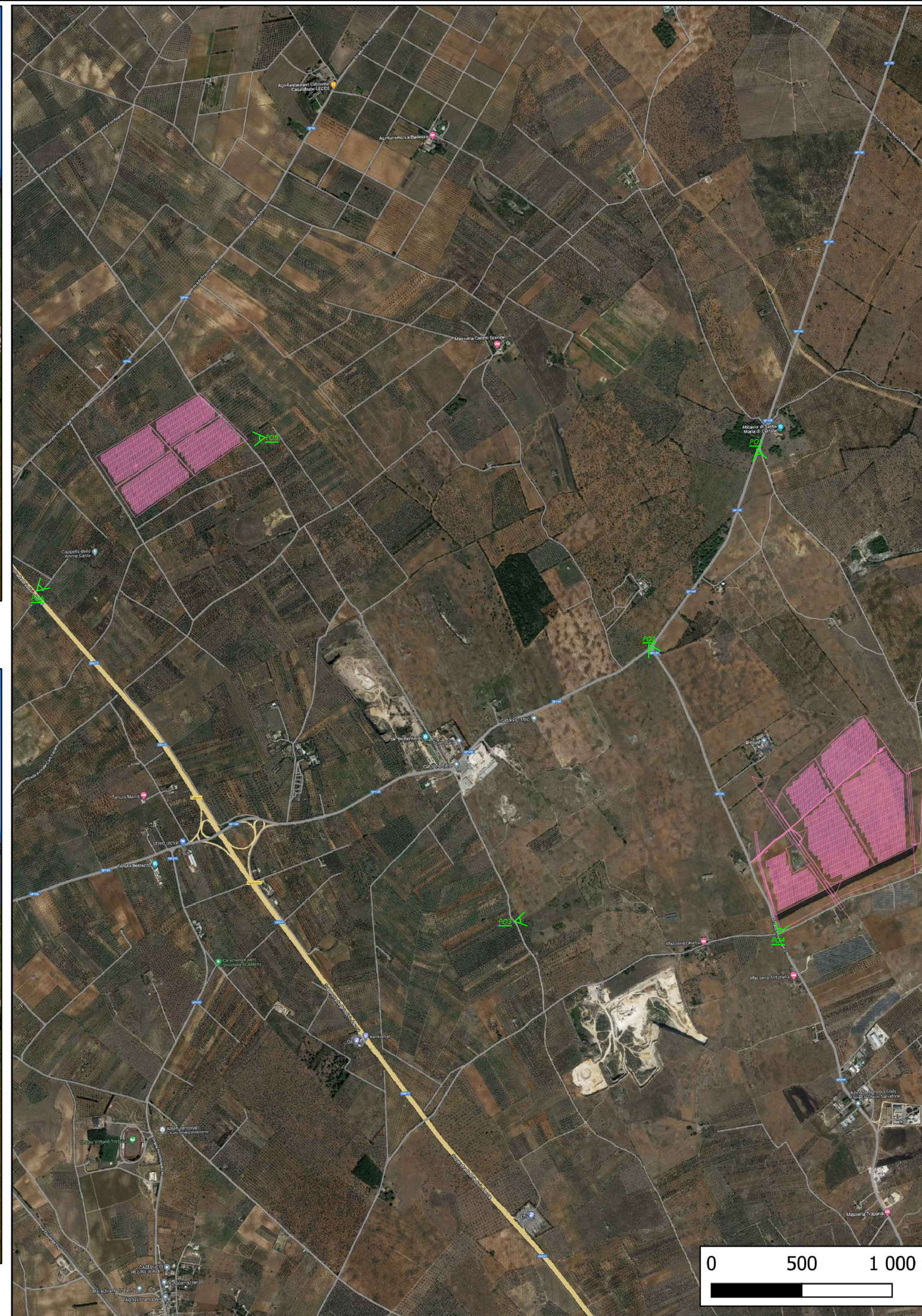


ANTE OPERAM



PO4

POST OPERAM



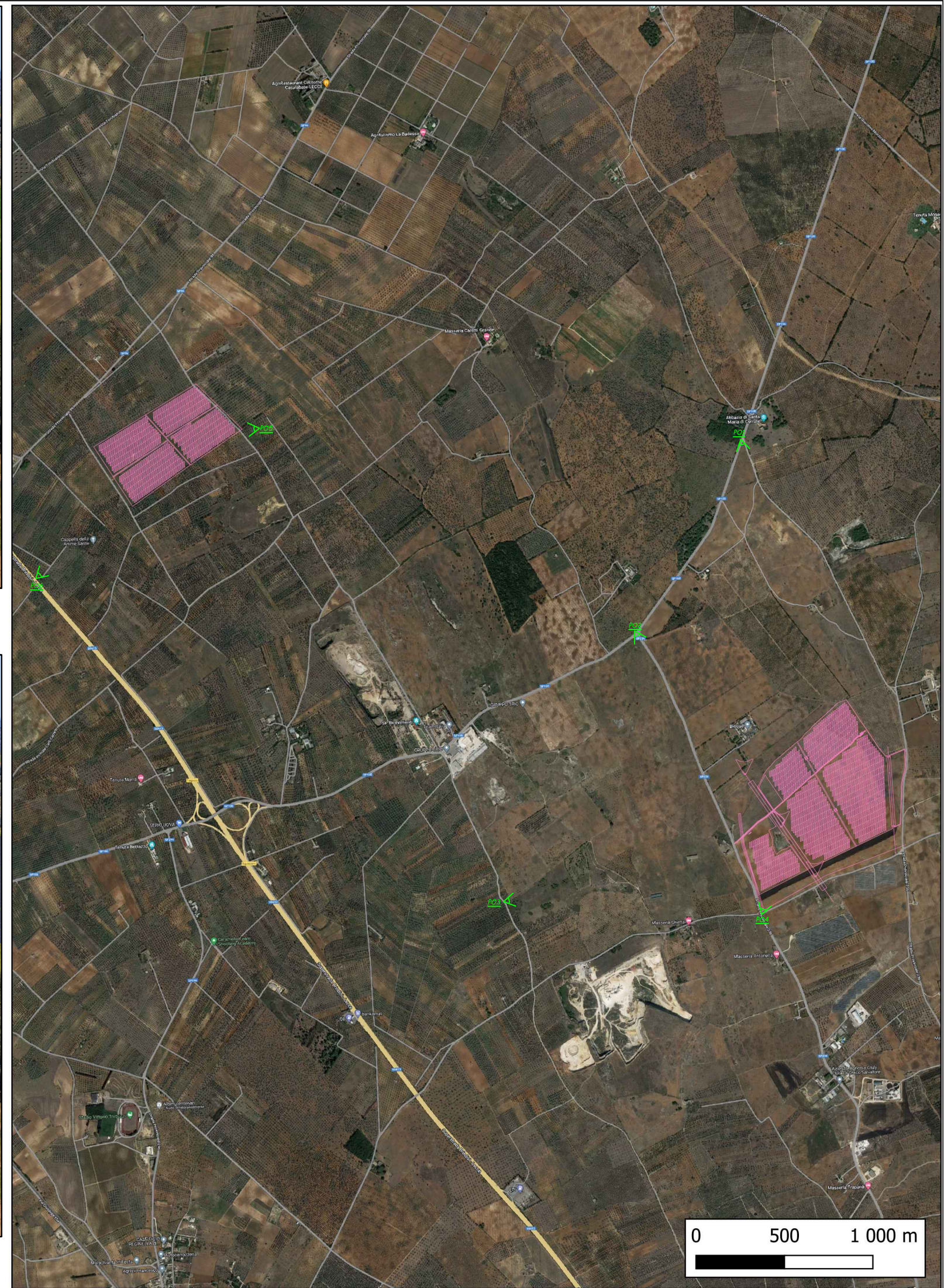


ANTE OPERAM



PO5

POST OPERAM





ANTE OPERAM



PO6

POST OPERAM

