

S.S. 17 "dell'Appennino Abruzzese ad Appulo Sannitico"
Tronco Antrodoco-Navelli
Adeguamento tratto S.Gregorio-S. Pio delle Camere
dal km 45+000 al km 58+000

PROGETTO DEFINITIVO

COD. AQ-01

PROGETTAZIONE:



**PROGETTISTA E DIRETTORE TECNICO
DELLE OPERE DI INSERIMENTO PAESAGGISTICO:**

Arch. Andreas Otto Kipar
Ordine Arch. Milano n. 13359

GEOLOGO:

Geol. Roberto Pedone
Ordine Geol. Liguria n. 183

**RESPONSABILE DELL'INTEGRAZIONE DELLE
DISCIPLINE SPECIALISTICHE:**

Ing. Alessandro Aliotta
Ordine Ingg. Genova n.7995A

COORDINATORE DELLA SICUREZZA:

Arch. Giorgio Villa
Ordine Arch. Provincia di Pavia n.645

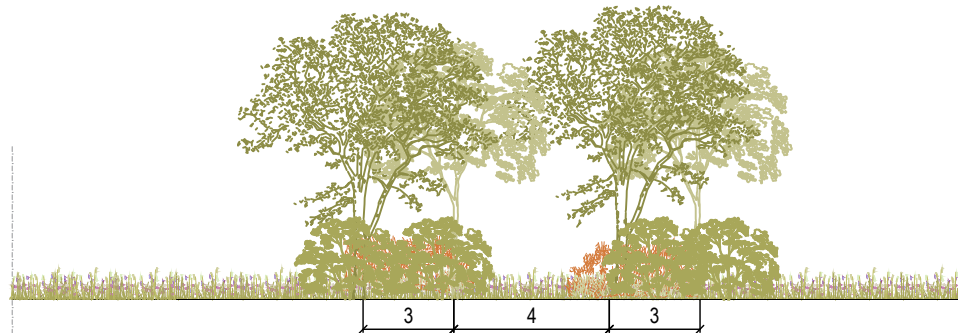
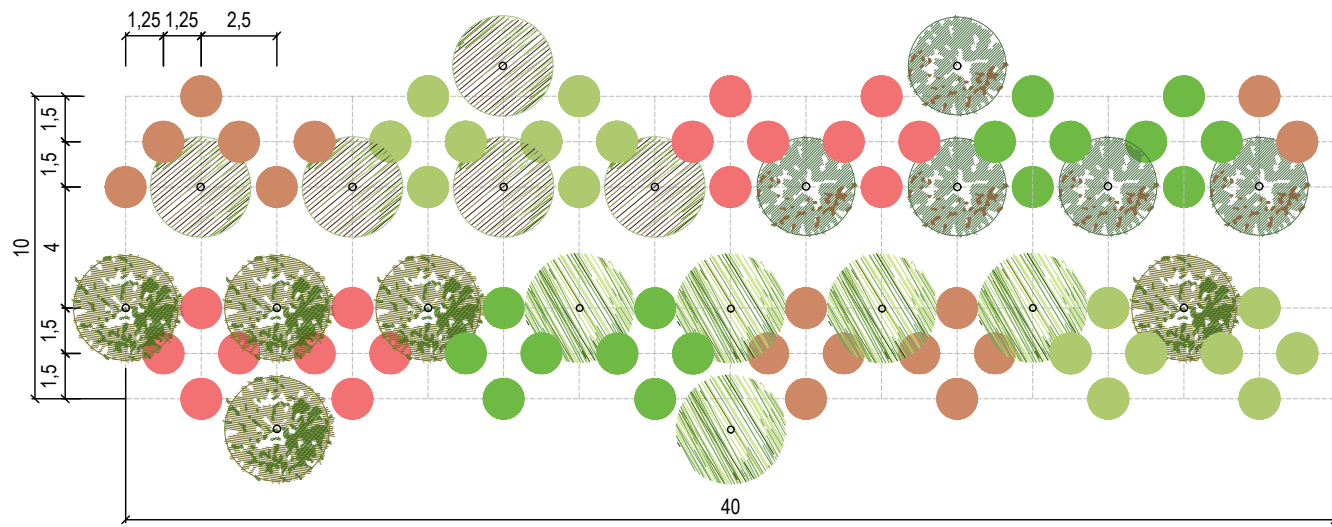
VISTO: IL RESPONSABILE DEL PROCEDIMENTO

Ing. CLAUDIO BUCCI

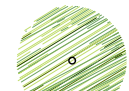


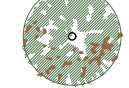
INSERIMENTO PAESAGGISTICO AMBIENTALE
Quaderno delle opere a verde

CODICE PROGETTO		NOME FILE		REVISIONE	SCALA:
PROGETTO	LIV. PROG.	ANNO			
DPAQ0001	D	20	P00IA00AMBSC01_A	B	—
			CODICE ELAB. P00IA00AMBSC01		
C					
B	A seguito di istruttoria ANAS	Febbraio 2023	SF	SM	AK
A	EMISSIONE	Settembre 2022	SF	SM	AK
REV.	DESCRIZIONE	DATA	REDATTO	VERIFICATO	APPROVATO





PA1 - FILARI PER RICOMPOSIZIONE DELLA TRAMA AGRICOLA



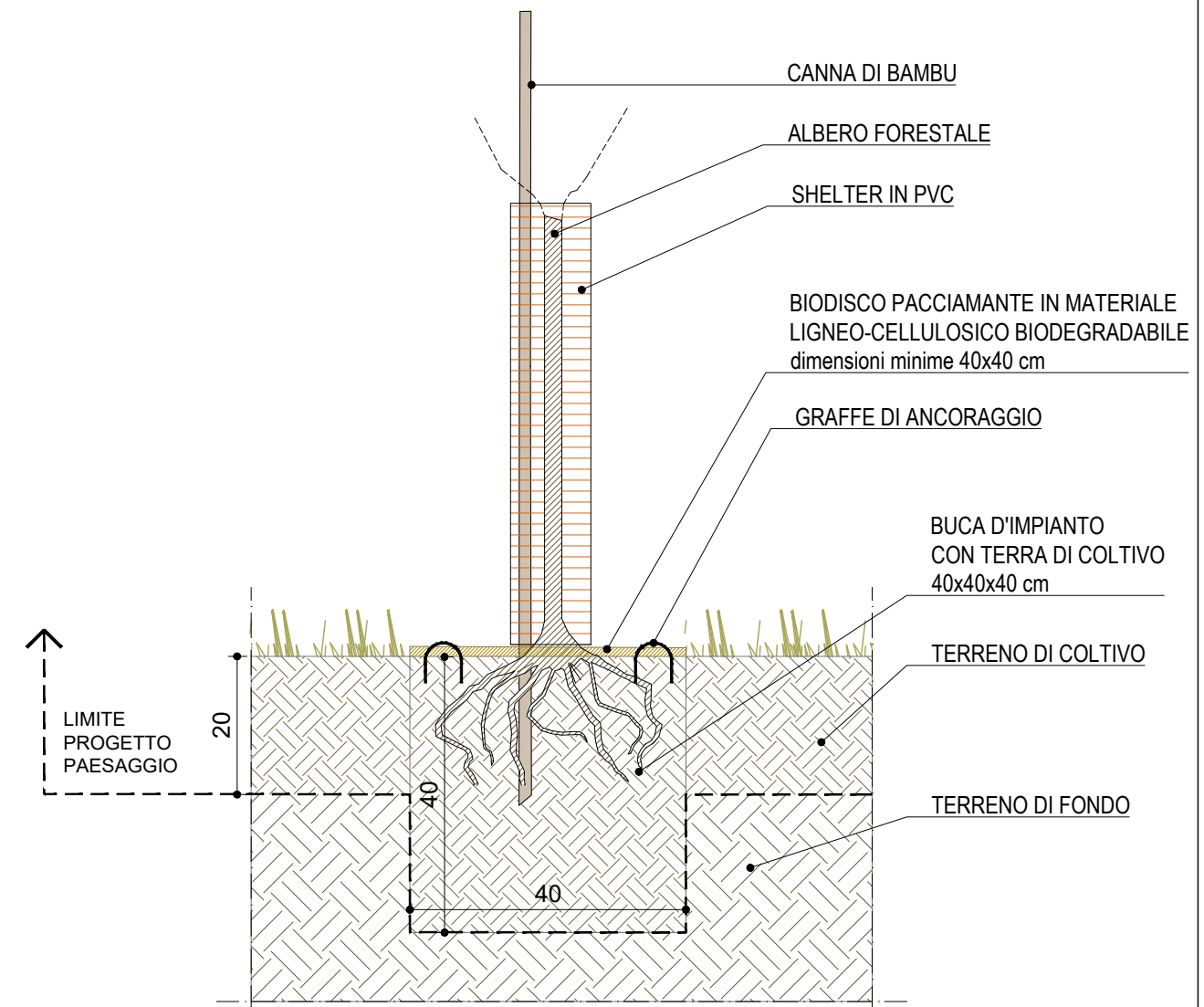
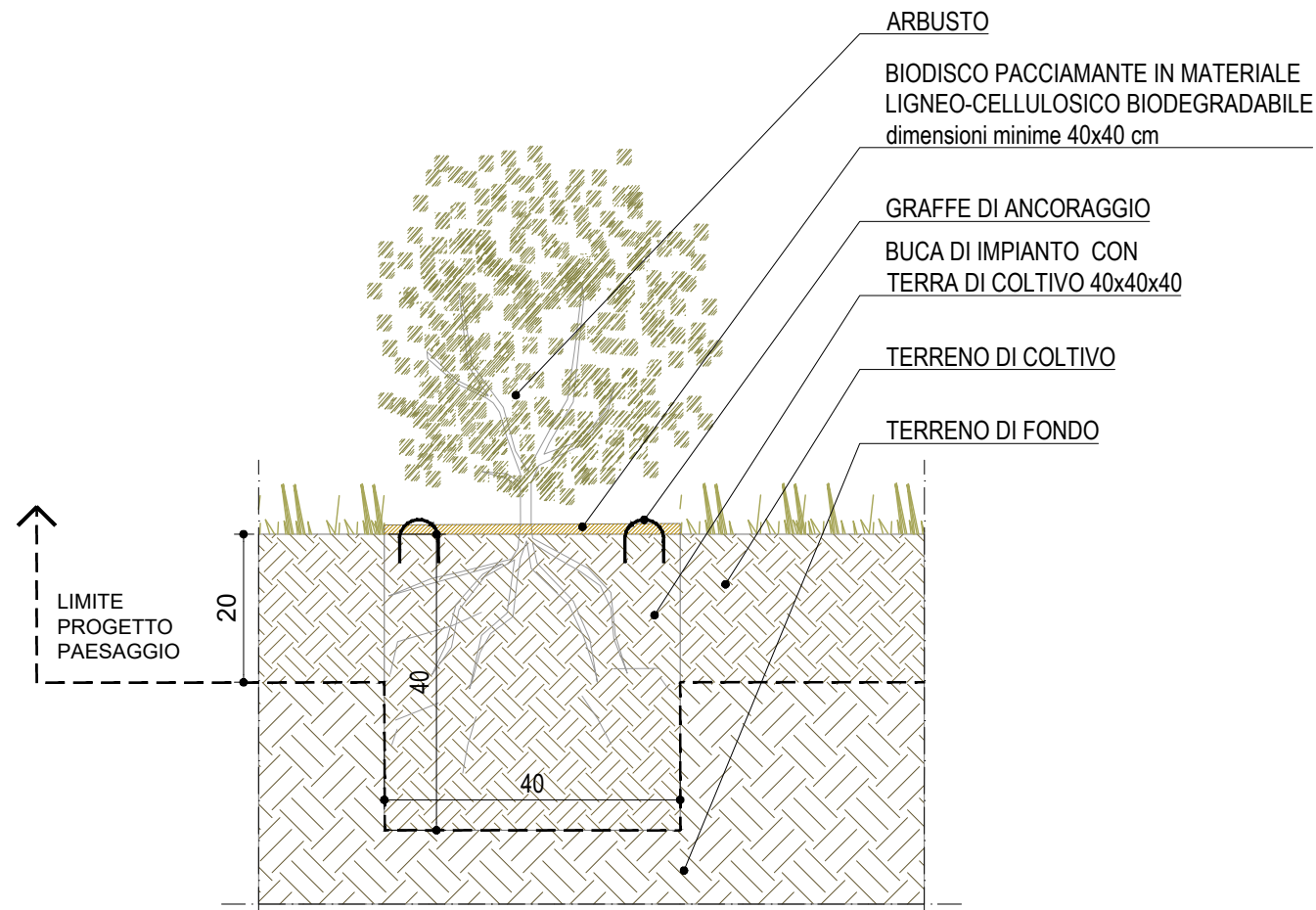
ALBERI

-  **Ac** *Acer campestre*
-  **Cs** *Ceratonia siliqua*
-  **Fc** *Ficus carica L. Petrelli*
-  **Sar** *Sorbus aria*

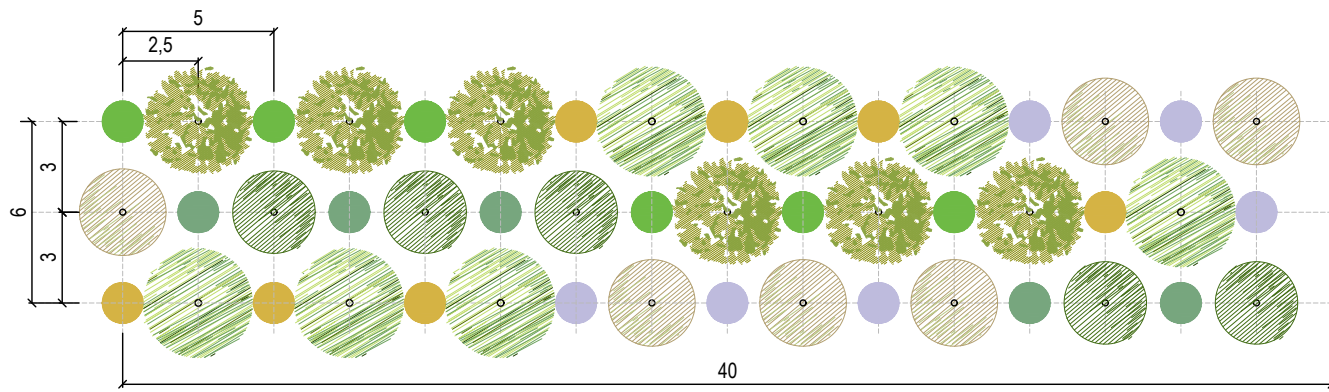
ARBUSTI

-  **Cmo** *Crataegus monogyna*
-  **Lvu** *Ligustrum vulgare*
-  **Sni** *Sambucus nigra*
-  **Vop** *Viburnum opalus*

PA1 - FILARI PER RICOMPOSIZIONE TRAMA AGRICOLA				
Specie	Sigla	Espropri	Compensazione	TOTALE
<i>Acer campestre</i>	Ac	96	42	138
<i>Ceratonia siliqua</i>	Cs	103	44	147
<i>Ficus carica L. Petrelli</i>	Fc	101	45	146
<i>Sorbus aria</i>	Sar	93	38	131
<i>Crataegus monogyna</i>	Cro	322	141	463
<i>Ligustrum vulgare</i>	Lvu	315	129	444
<i>Sambucus nigra</i>	Sni	315	129	444
<i>Viburnum opulus</i>	Vop	311	134	445
Area Tot. Chiome (mq)		3.859,5	1.644,5	5.504,0
N° totale piante		1.656	702	2.358



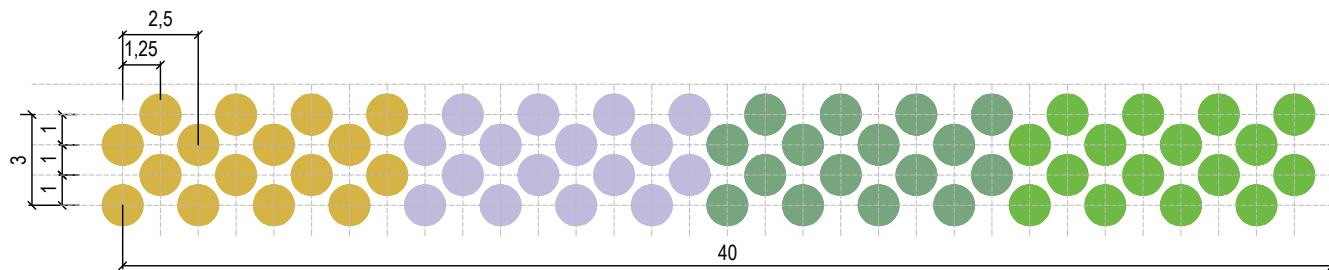
PA2 - INVERDIMENETO ARBOREO ARBUSTIVO PER MITIGAZIONE ECOLOGICA



ALBERI

- Ac *Acer campestre*
- Am *Acer monspessolanum*
- Sau *Sorbus aucuparia*
- Qp *Quercus petraea*

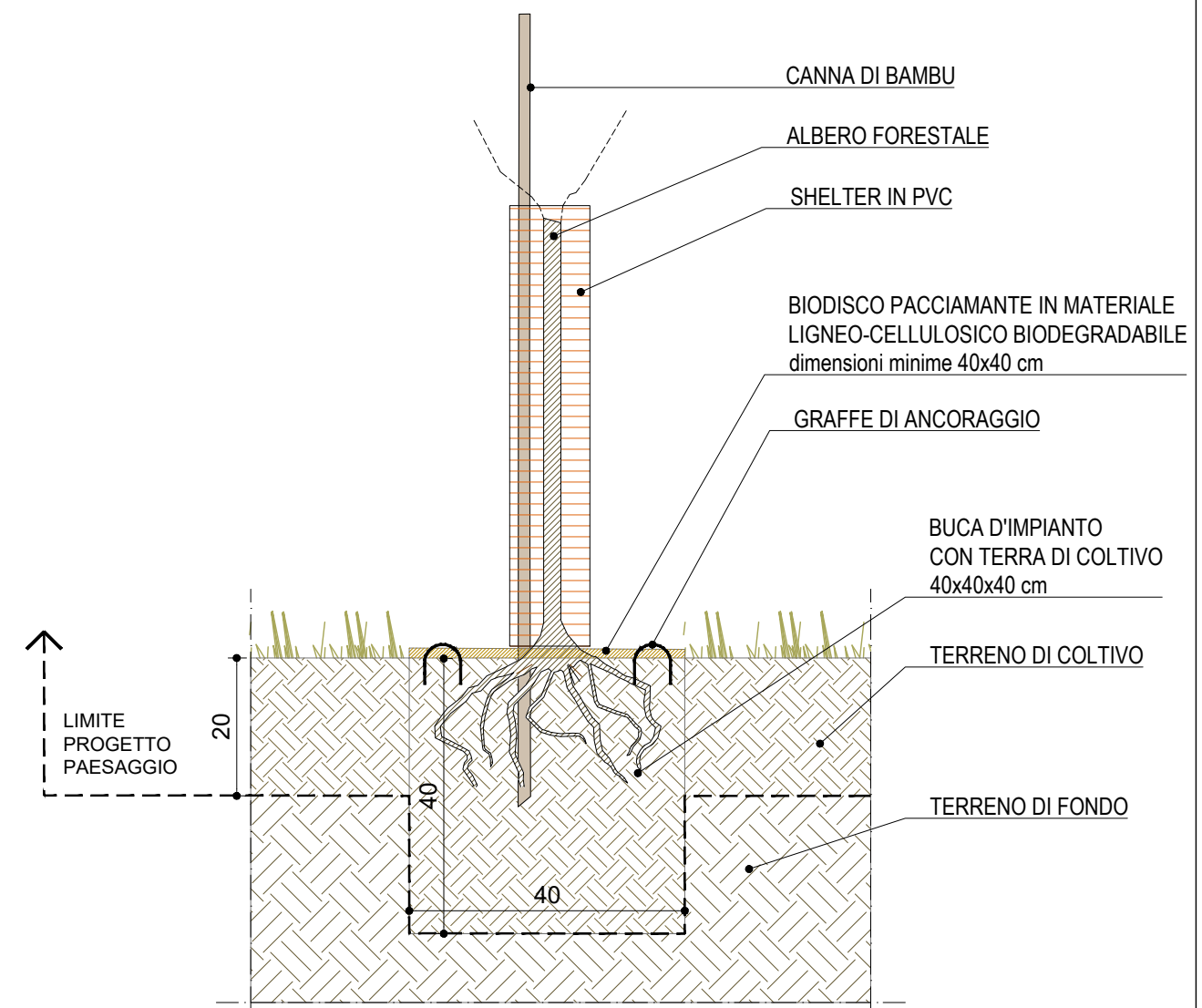
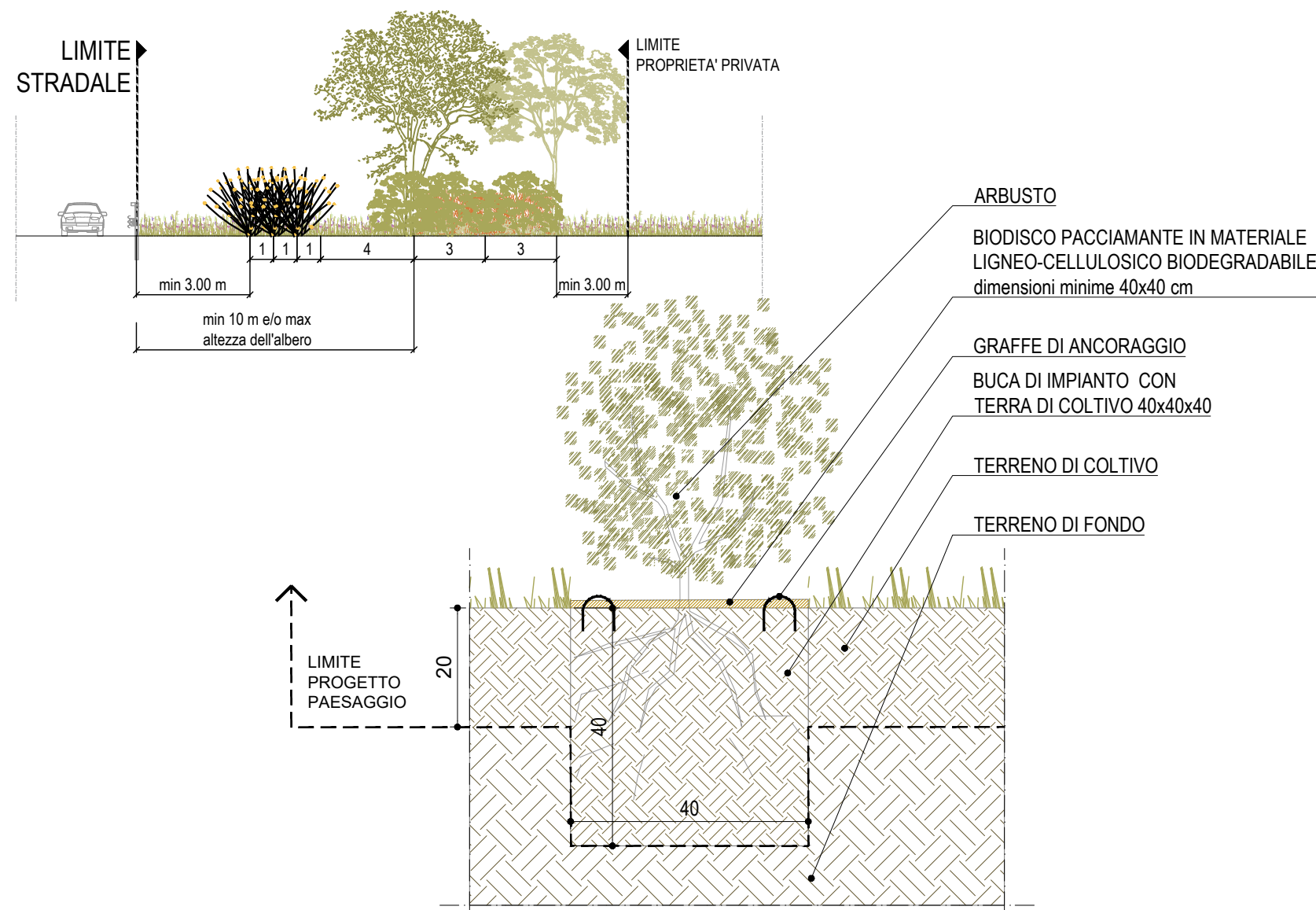
PA3 - FASCE ARBUSTIVE PER MITIGAZIONE ECOLOGICA



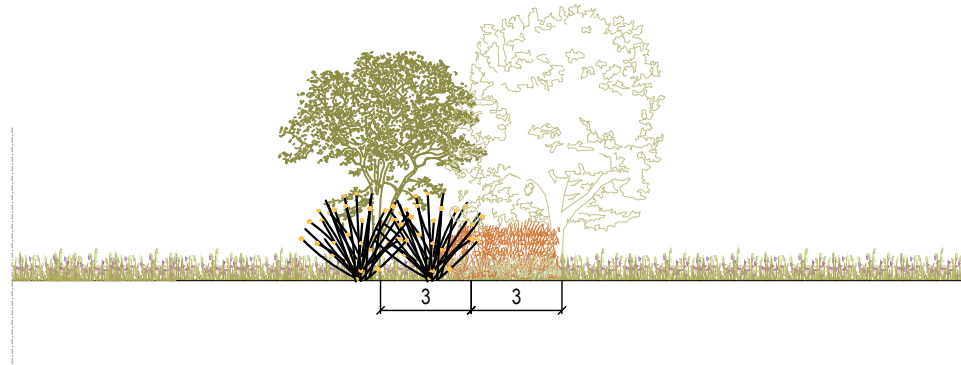
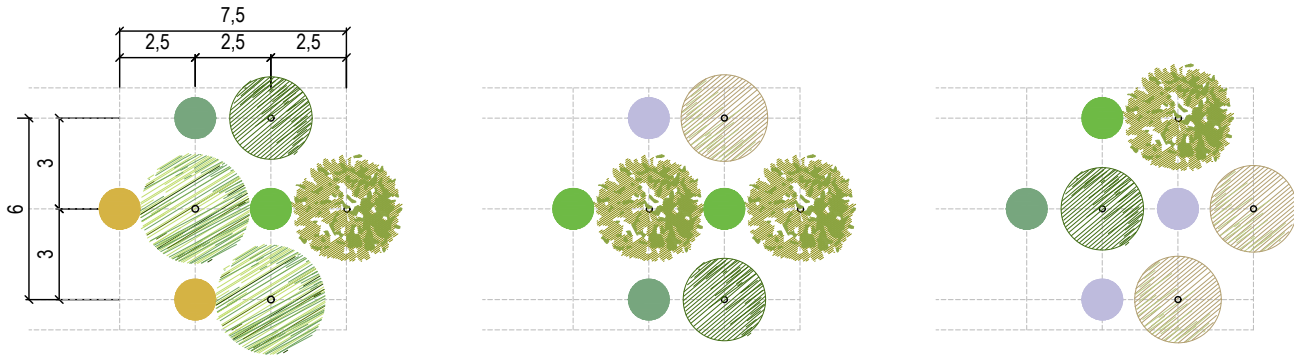
ARBUSTI

- Csc *Cytisus scoparius*
- Psp *Prunus spinosa*
- RCA *Rosa canina*
- Vop *Viburnum opalus*

PA2-3 - INVERDIMENTO ARBOREO ARBUSTIVO PER MITIGAZIONE				
Specie	Sigla	Espropri	Compensazioni	TOTALE
<i>Acer campestre</i>	Ac	169	158	327
<i>Acer monspessolanum</i>	Am	170	151	321
<i>Ficus carica L. Petrelli</i>	Qp	177	166	343
<i>Sorbus aucuparia</i>	Sau	165	163	328
<i>Cytisus scoparius</i>	Csc	1.545	566	2.111
<i>Prunus spinosa</i>	Psp	1.482	503	1.985
<i>Rosa canina</i>	Rca	1.505	502	2.007
<i>Viburnum opulus</i>	Vop	1.493	483	1.976
Area Tot. Chiome (mq)		12.442,5	6.271,0	18.713,5
N° totale piante		6.706	2.692	9.398



PA4 - GRUPPI ARBOREI ARBUSTIVI PER LA RICOMPOSIZIONE DELLA TRAMA AGRICOLA



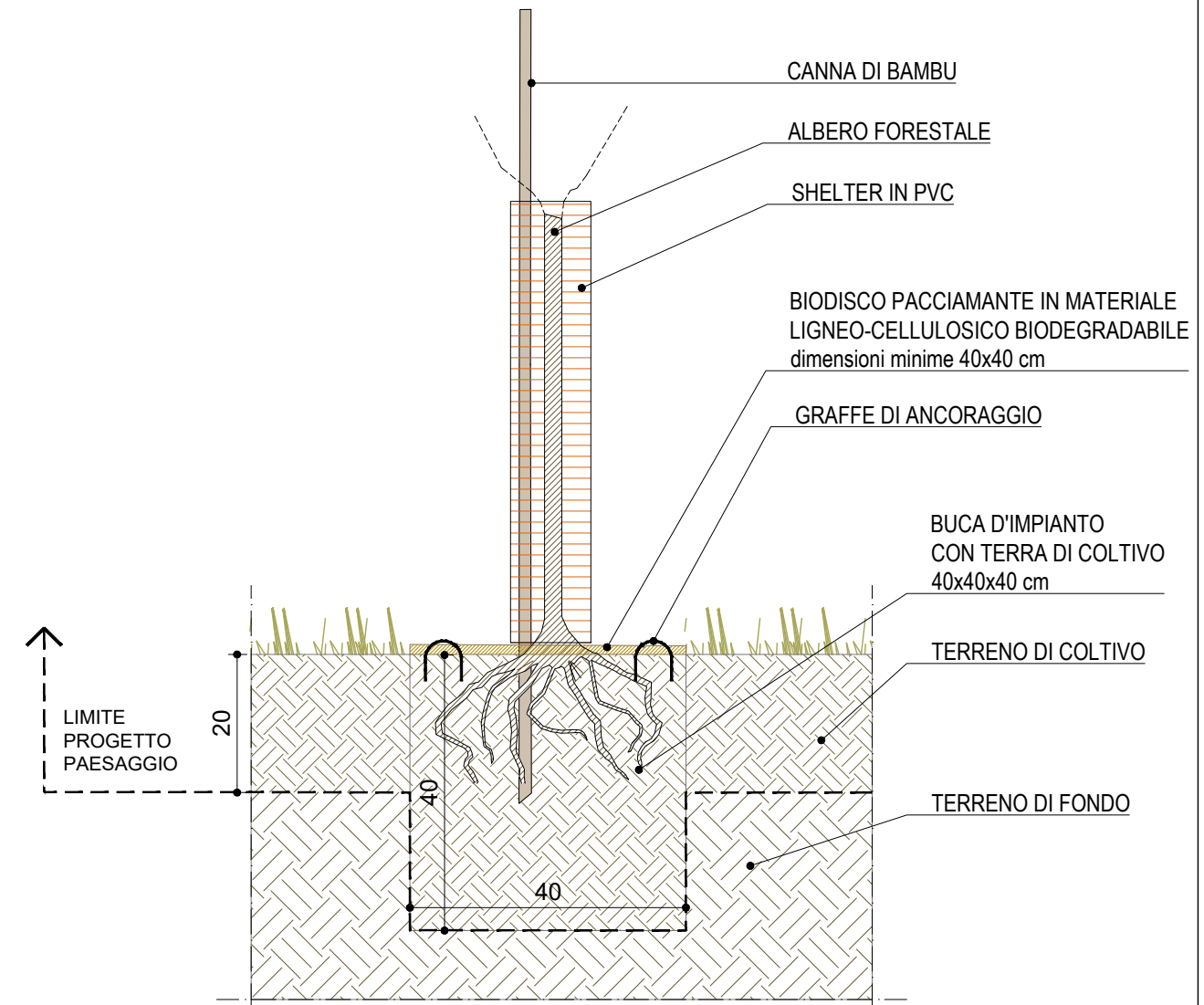
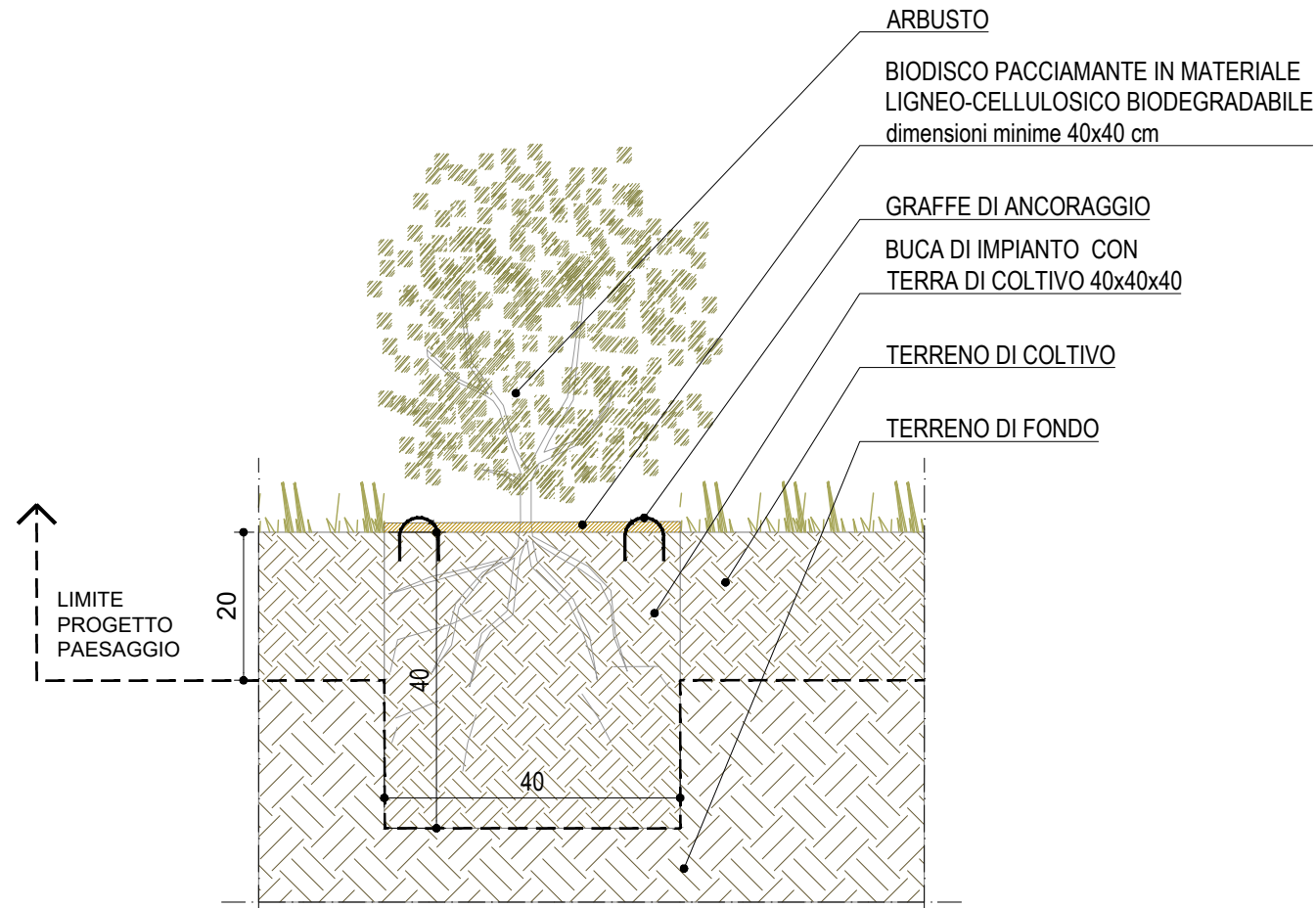
ALBERI

- Ac *Acer campestre*
- Am *Acer monspessolanum*
- Sau *Sorbus aucuparia*
- Qp *Quercus petraea*

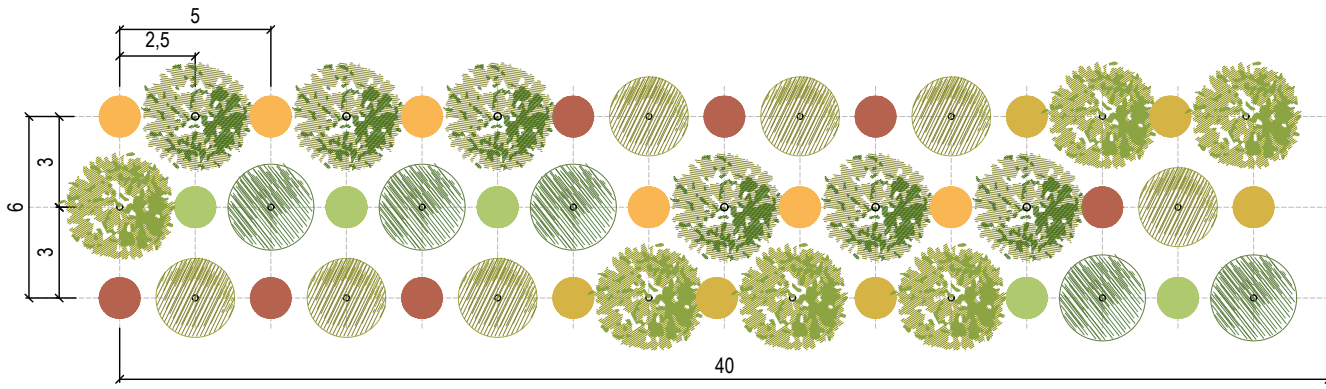
ARBUSTI

- Csc *Cytisus scoparius*
- Psp *Prunus spinosa*
- RCA *Rosa canina*
- Vop *Viburnum opalus*

PA4 - GRUPPI ARBOREI PER LA RICOMPOSIZIONE TRAMA AGRICOLA				
Specie	Sigla	Espropri	Compensazioni	TOTALE
<i>Acer campestre</i>	Ac	38	20	58
<i>Acer monspessolanum</i>	Am	47	32	79
<i>Sorbus aucuparia</i>	Sau	53	30	83
<i>Quercus petraea</i>	Qp	74	38	112
<i>Cytisus scoparius</i>	Csc	38	20	58
<i>Prunus spinosa</i>	Psp	47	32	79
<i>Rosa canina</i>	Rca	53	30	83
<i>Viburnum opalus</i>	Vop	74	38	112
Area Tot. Chiome (mq)		1.378,0	780,0	2.158,0
N° totale piante		424	240	664



PF1 - RIMBOSCHIMENTO ARBOREO ARBUSTIVO PER MITIGAZIONE ECOLOGICA

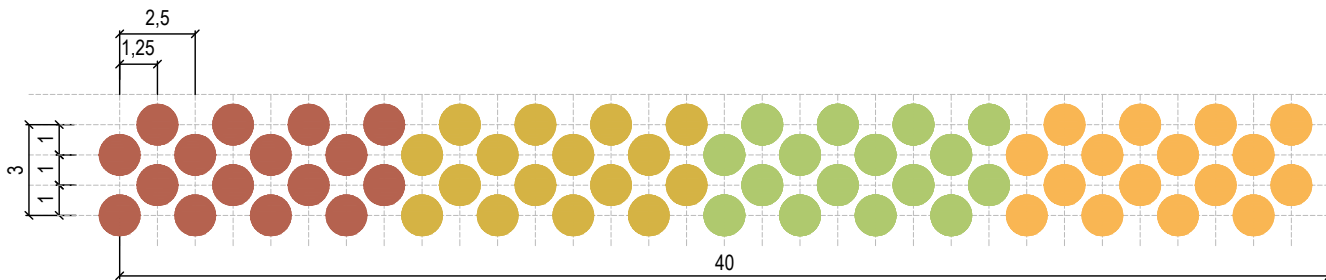


ALBERI

- Cb *Carpinus betulus*
- Qc *Quercus cerris*
- Qp *Quercus petraea*
- Um *Ulmus minor*



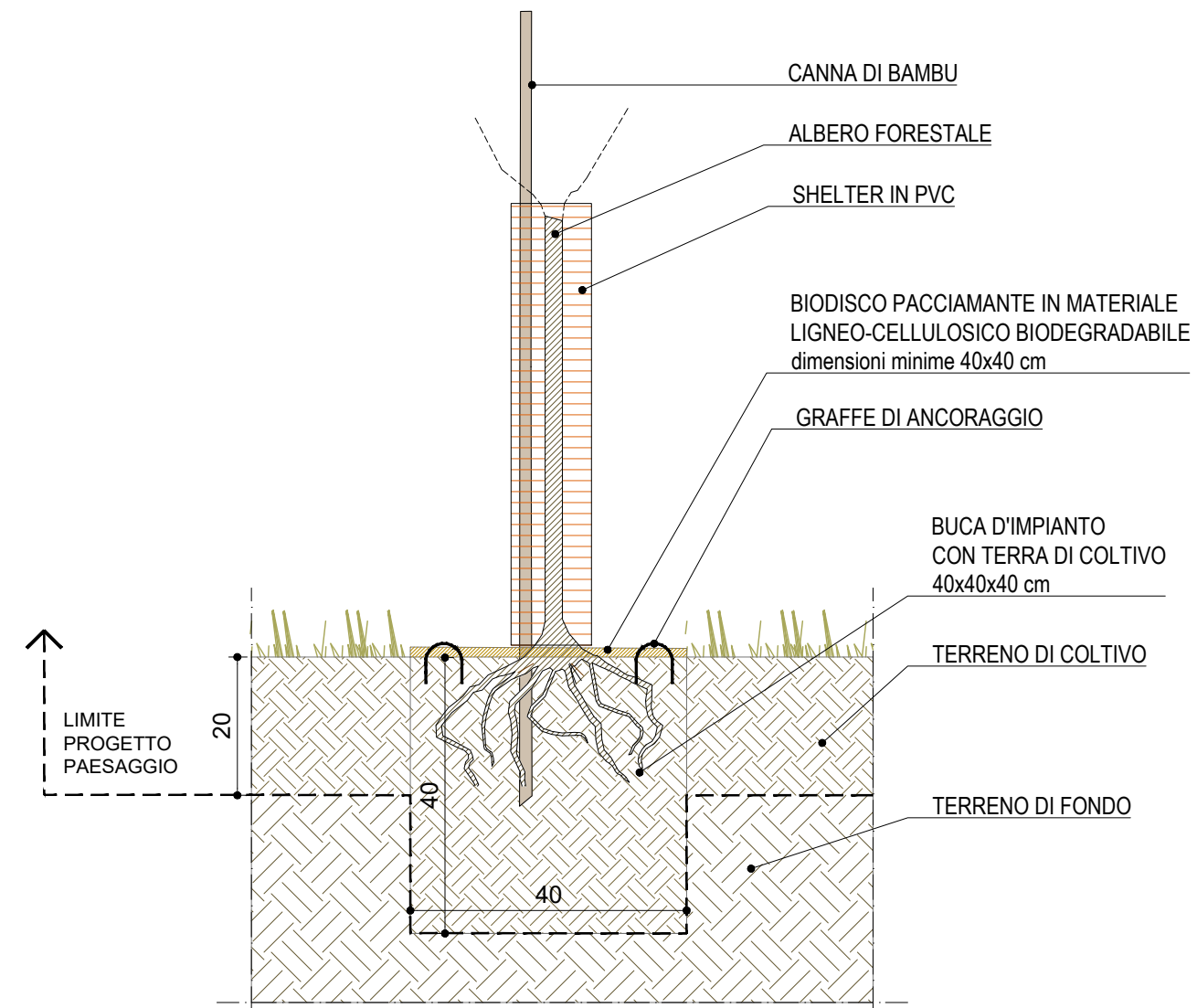
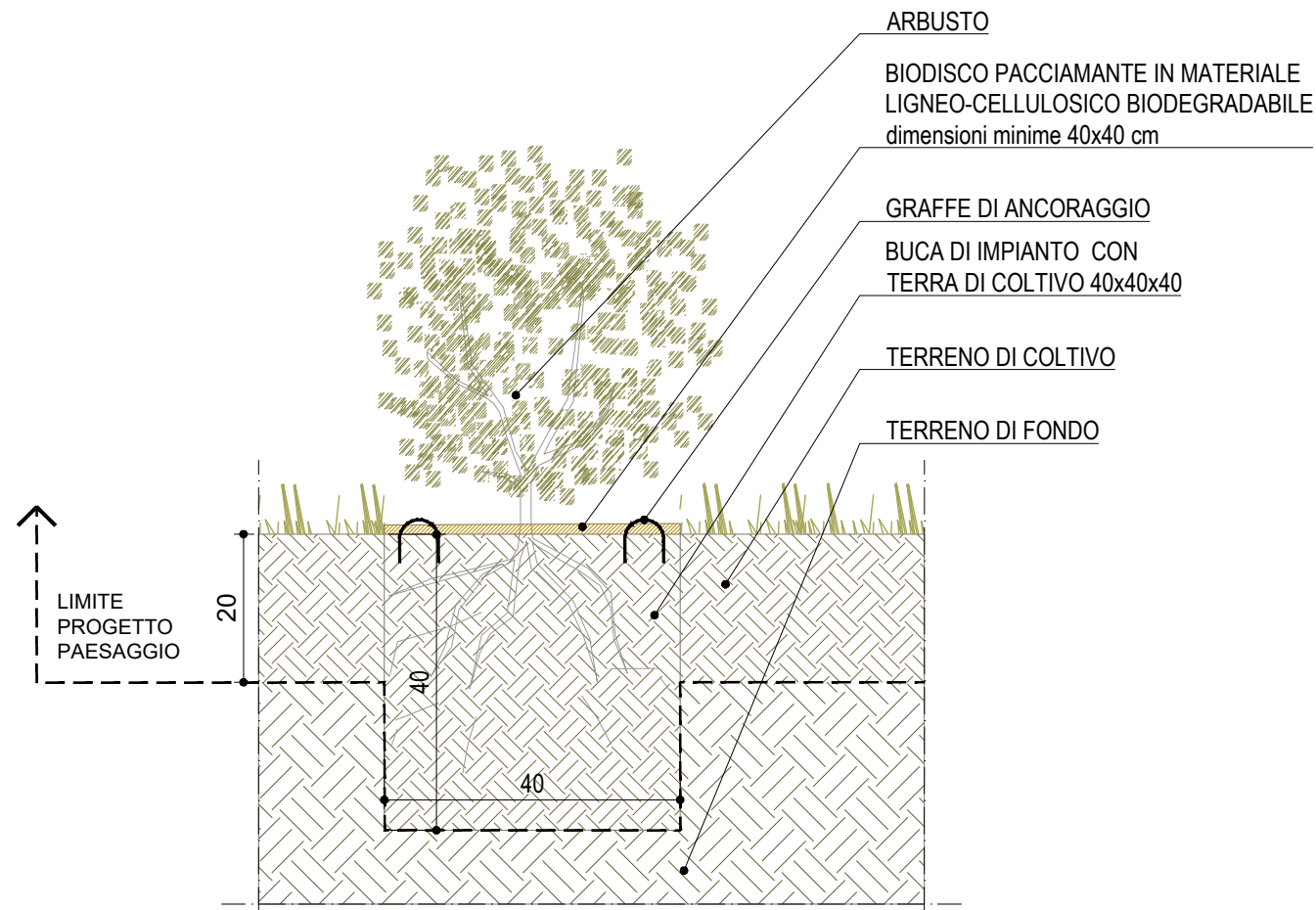
PF2 - FASCE ARBUSTIVE PER MITIGAZIONE ECOLOGICA



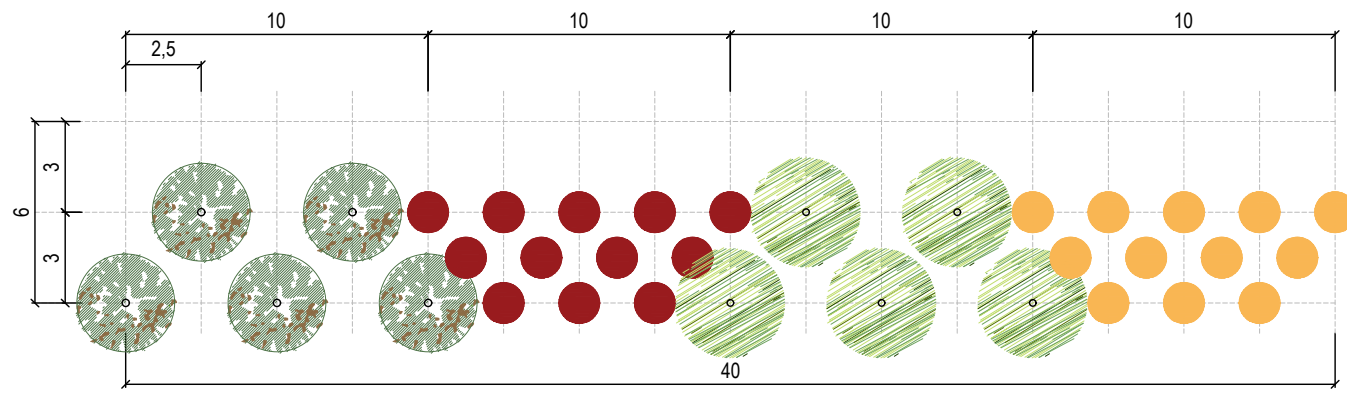
ARBUSTI

- Cma *Cornus mas*
- Cav *Corylus avellana*
- Csc *Cytisus scoparius*
- Sni *Sambucus nigra*

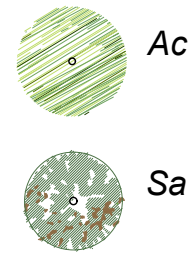
PF1-2 - INVERDIMENTO ARBOREO ARBUSTIVO PER MITIGAZIONE ECOLOGICA				
Specie	Sigla	Espropri	Compensazioni	TOTALE
<i>Carpinus betulus</i>	Cb	194	261	455
<i>Quercus cerris</i>	Qc	188	249	437
<i>Quercus petraea</i>	Qp	189	243	432
<i>Ulmus minor</i>	Um	192	272	464
<i>Cornus mas</i>	Cma	1.132	385	1.517
<i>Corylus avellana</i>	Cav	1.122	397	1.519
<i>Cytisus scoparius</i>	Csc	1.197	411	1.608
<i>Sambucus nigra</i>	Sni	1.136	408	1.544
Area Tot. Chiome (mq)		10.695,5	7.526,5	18.222,0
N° totale piante		5.350	2.626	7.976



PI1 - FASCE ARBOREO ARBUSTIVE PER MITIGAZIONE ECOLOGICA

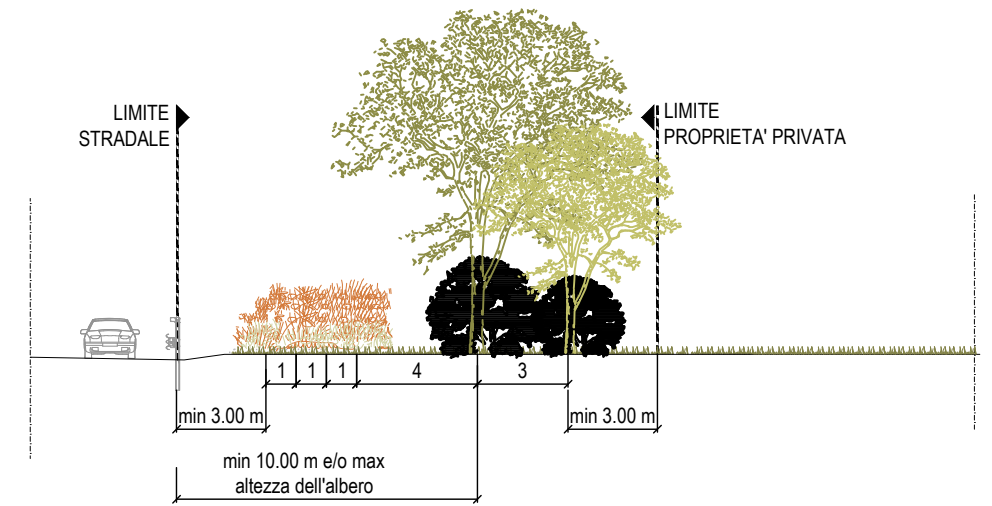


ALBERI

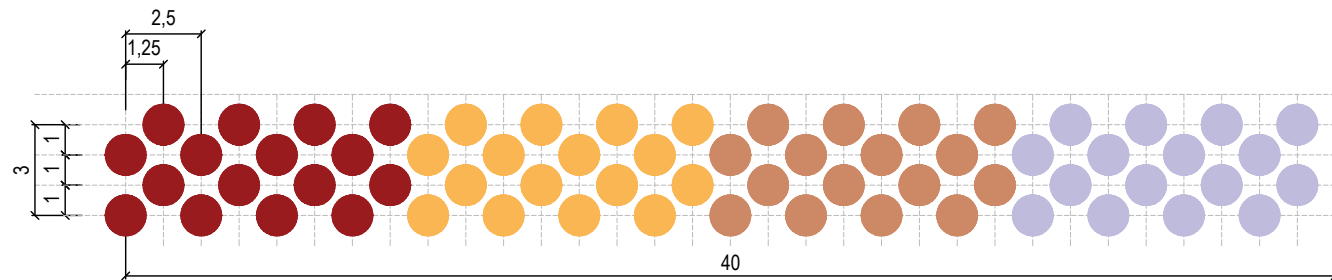


Acer campestre

Sorbus aria



PI2 - FASCE ARBUSTIVE PER MITIGAZIONE ECOLOGICA



ARBUSTI



Cornus mas

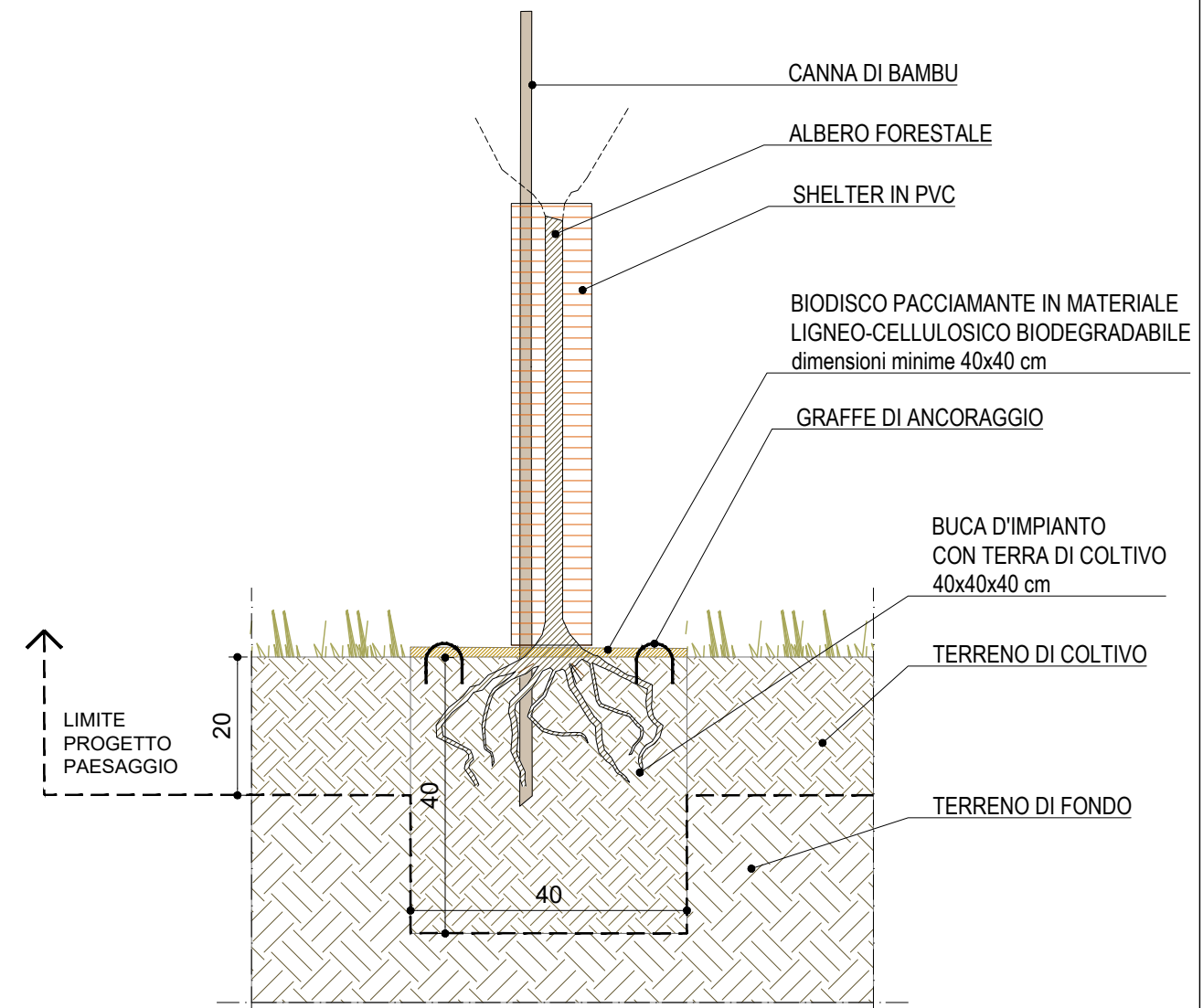
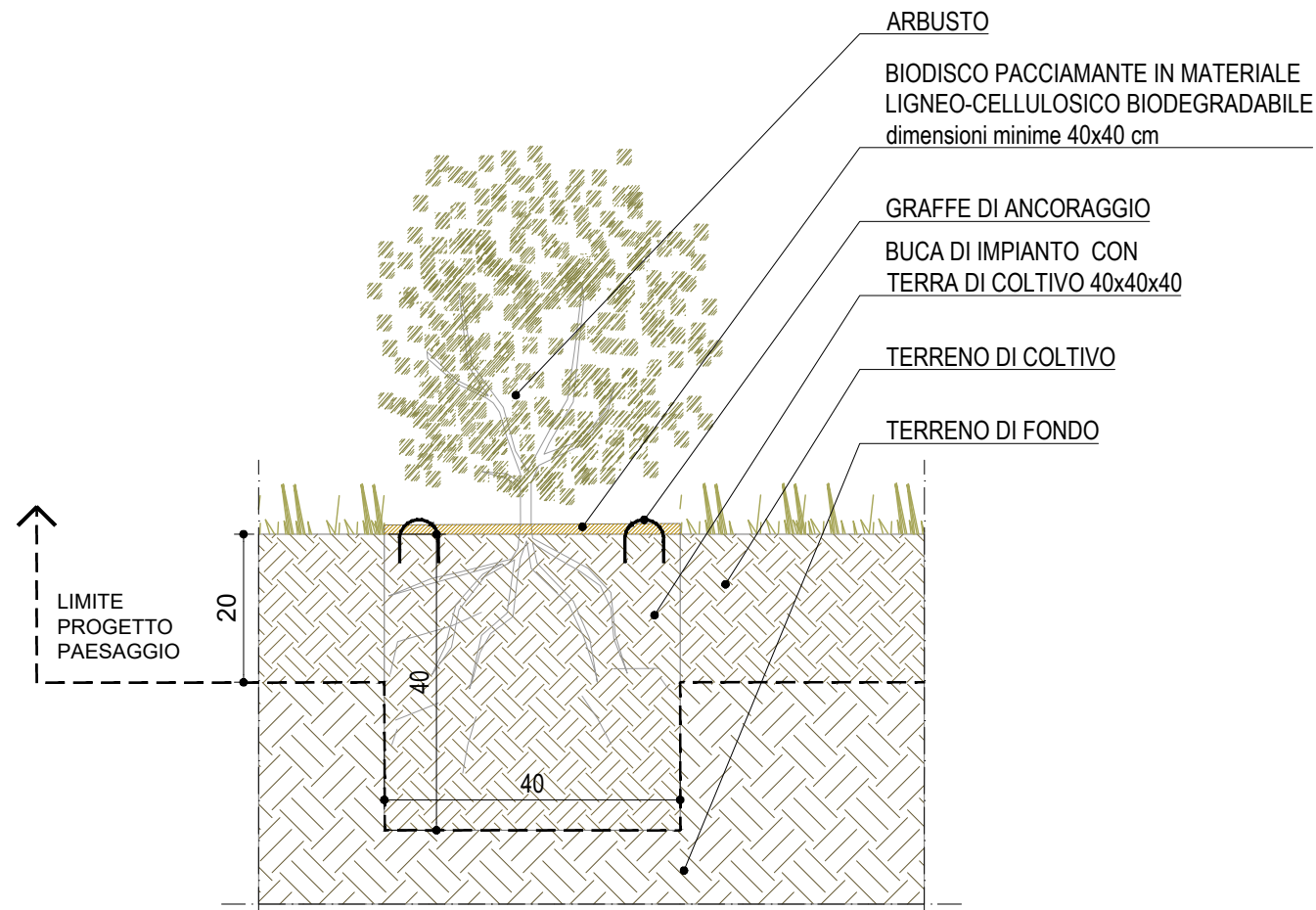
Cornus sanguinea

Ligustrum vulgare

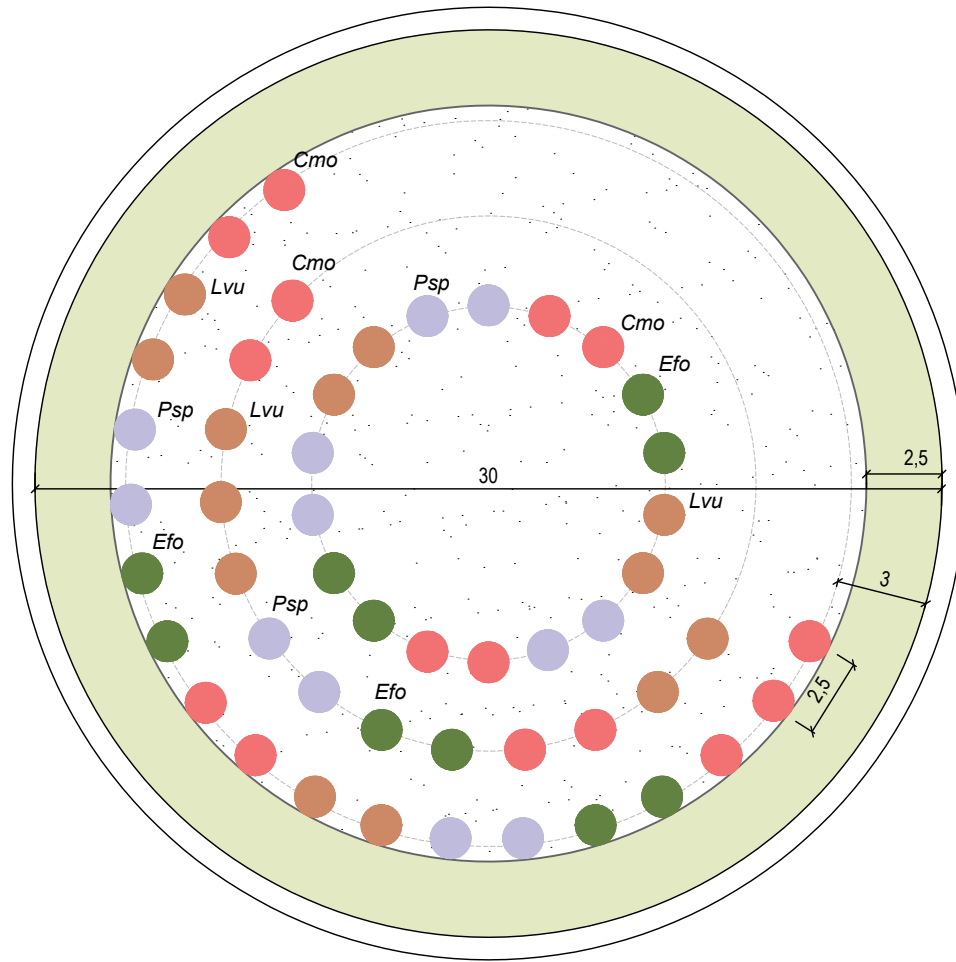
Prunus spinosa

PI1-2 - FASCE ARBOREO ARBUSTIVO PER MITIGAZIONE ECOLOGICA

Specie	Sigla	Espropri	Compensazioni	TOTALE
<i>Acer campestre</i>	Ac	20	30	50
<i>Sorbus aria</i>	Sar	25	30	55
<i>Cornus mas</i>	Cma	400	340	740
<i>Cornus sanguinea</i>	Csa	488	332	820
<i>Ligustrum vulgare</i>	Lvu	288	352	640
<i>Prunus spinosa</i>	Psp	272	320	592
Area Tot. Chiome (mq)		2.397,0	2.316,0	4.713,0
N° totale piante		1.493	1.404	2.897

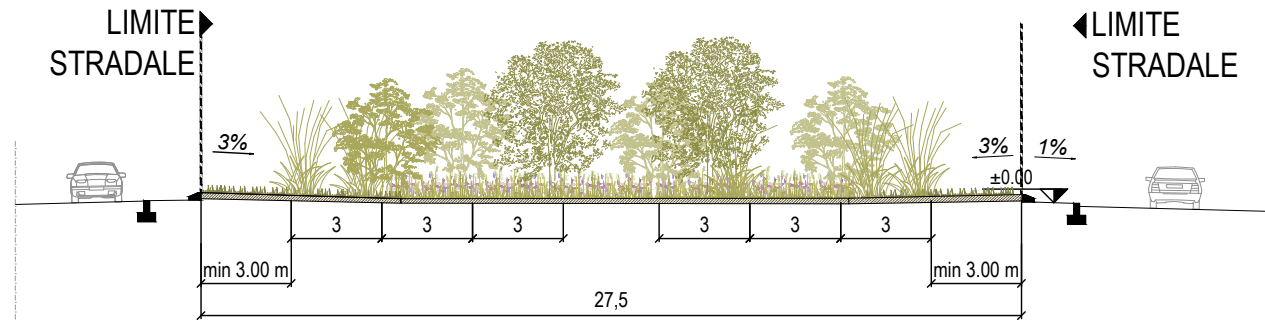


PI3 - INVERDIMENTO ARBUSTIVO ROTATORIE E SVINCOLI

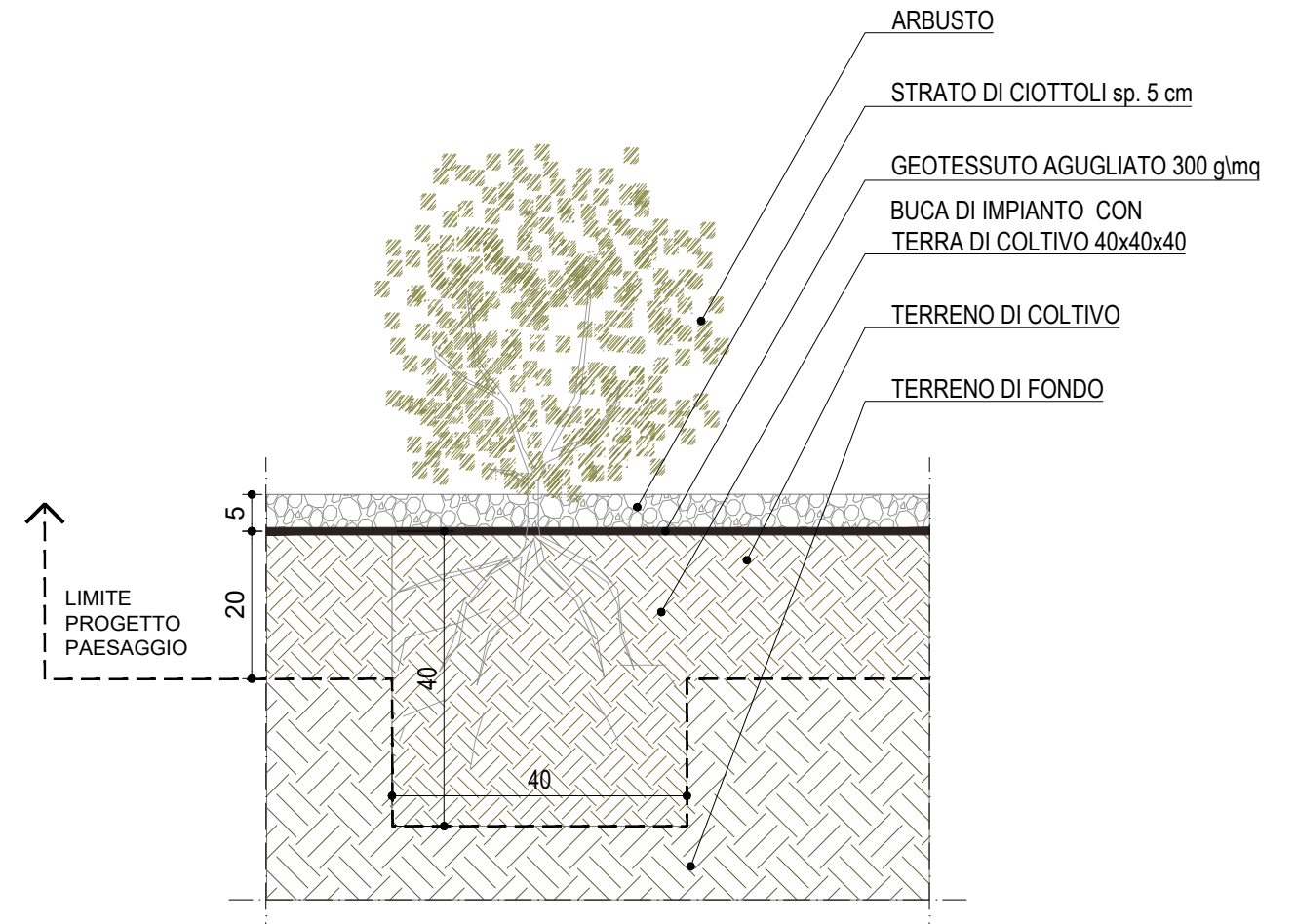
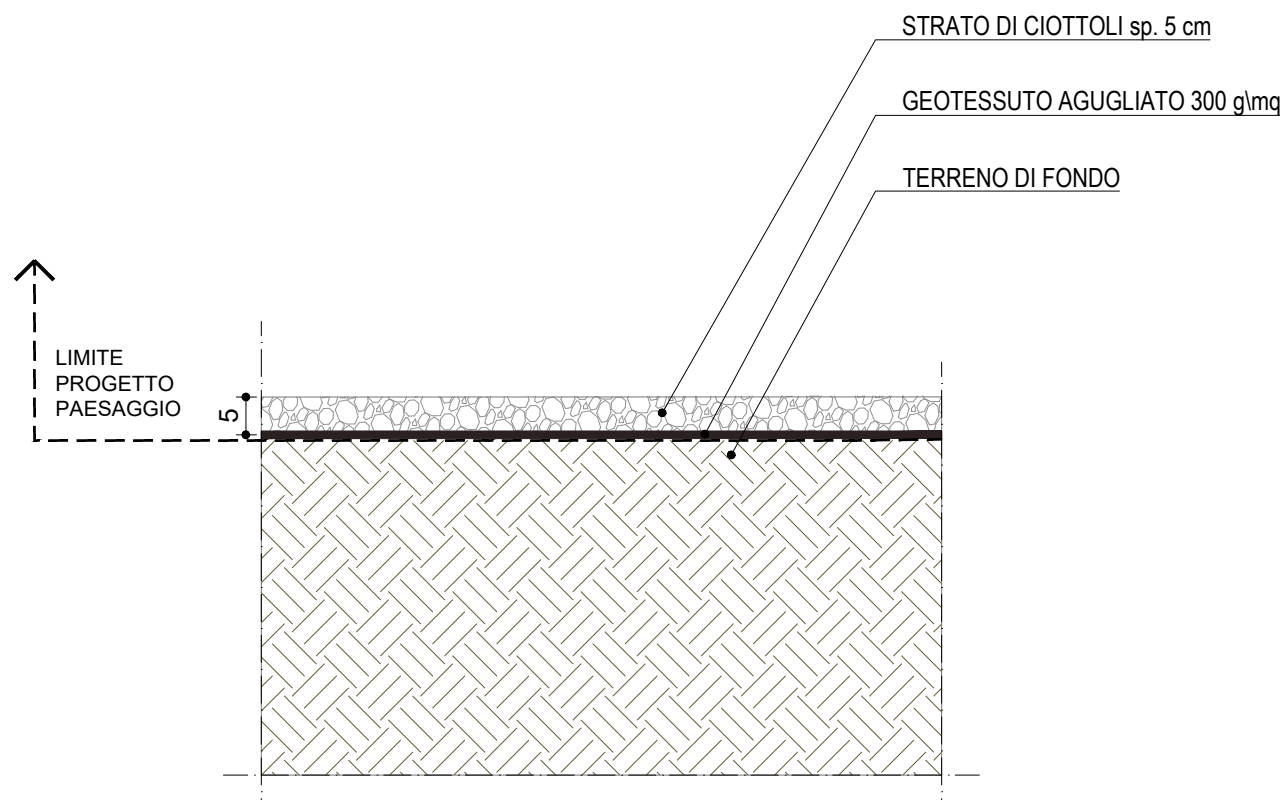


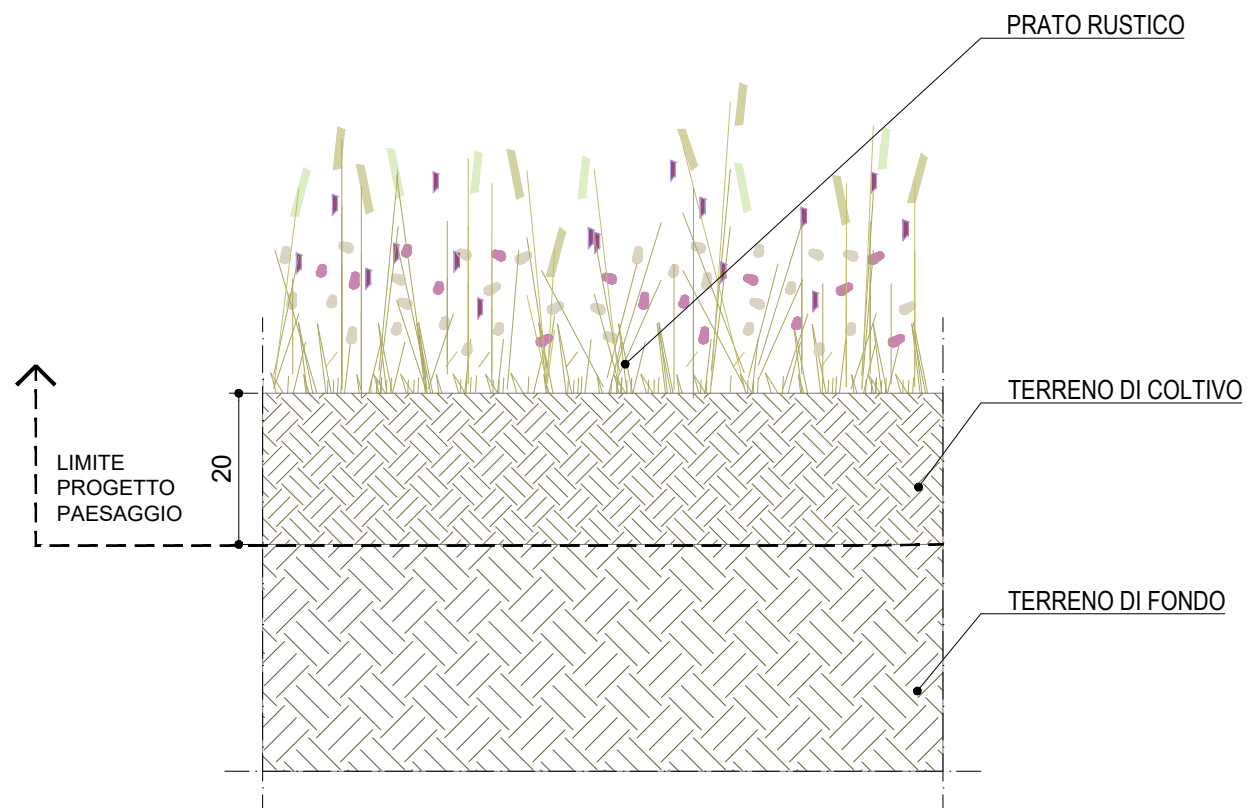
ARBUSTI

- Cmo *Crataegus monogyna*
- Lan *Laburnum anagyroides*
- Lvu *Ligustrum vulgare*
- Psp *Prunus spinosa*

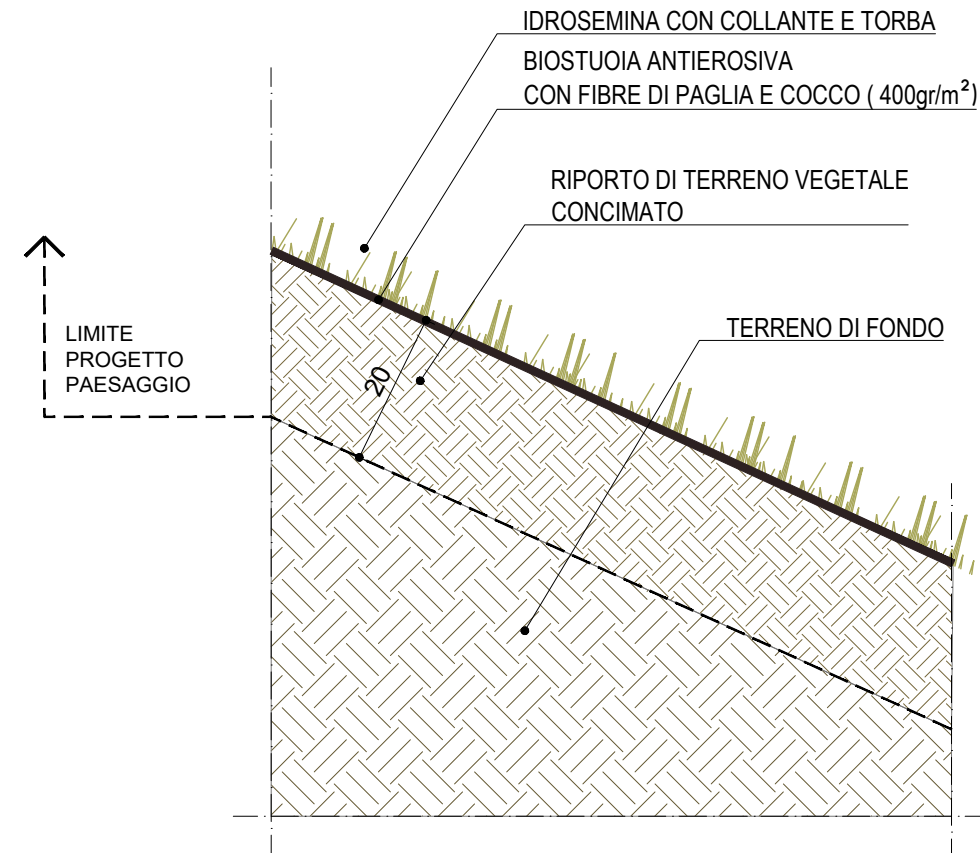


PI3 - INVERDIMENTO ARBUSTIVO ROTATORIE E SVINCOLI		
Specie	Sigla	TOTALE
<i>Crataegus monogyna</i>	Cmo	78
<i>Laburnum anagyroides</i>	Lan	70
<i>Ligustrum vulgare</i>	Lvu	74
<i>Prunus spinosa</i>	Psp	64
Area Tot. Chiome (mq)		0,0
N° totale piante		0

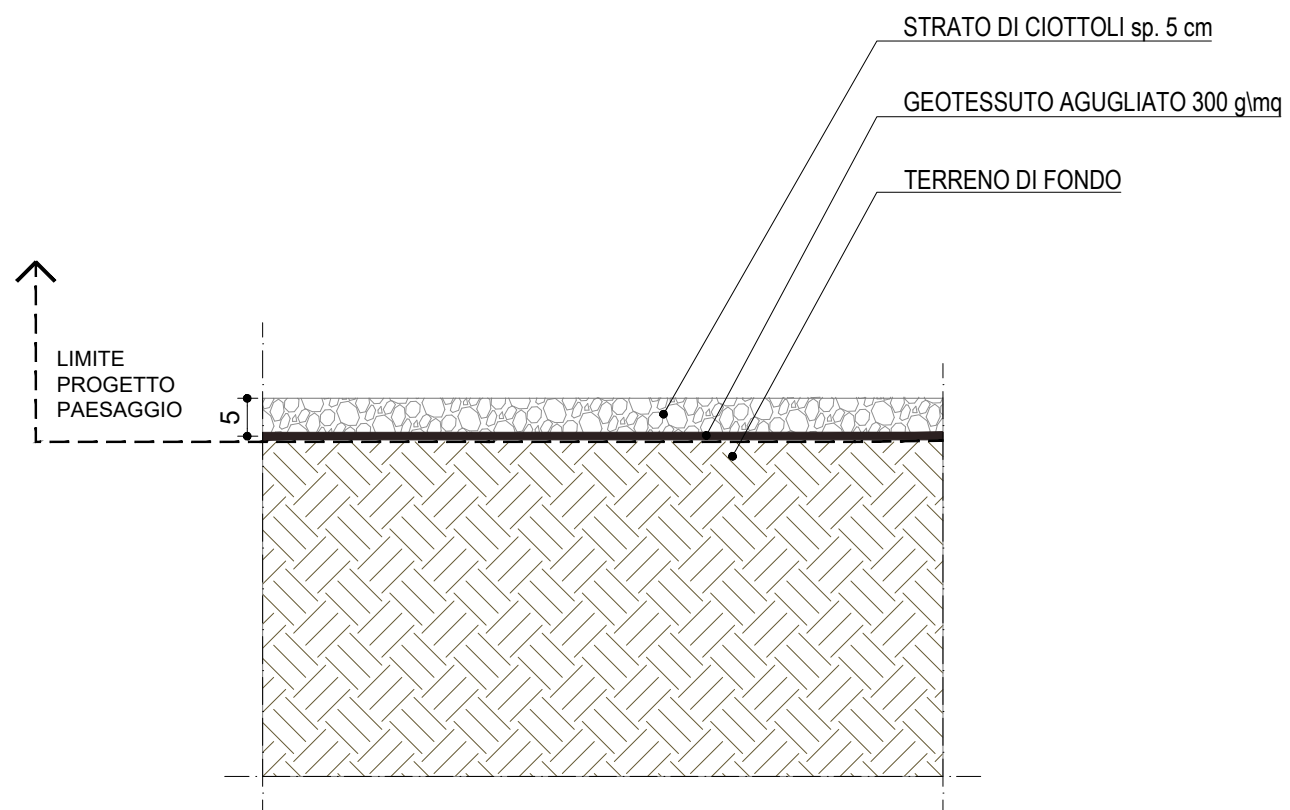




01 PRATO RUSTICO



02 PRATO RUSTICO SCARPATA



03 PACCIAMATURA IN GHIAIA

PA - PAESSAGGIO AGRICOLO				PI - PAESSAGGIO INFRASTRUTTURALE			
INR - Prato	Espropri	Compensazioni	TOTALE	INR - Prato	Espropri	Compensazioni	TOTALE
Area Tot. (mq)	356.353	65.993	422.346	Area Tot. (mq)	20.964	9.209	30.172
INS - idrosemina	Espropri	Compensazioni	TOTALE	INS - idrosemina	Espropri	Compensazioni	TOTALE
Area Tot. (mq)	71.608	0	71.608	Area Tot. (mq)	7.475	0	7.475
PIG - Ghiaia	Espropri	Compensazioni	TOTALE	PIG - Ghiaia	Espropri	Compensazioni	TOTALE
Area Tot. (mq)	0	0	0	Area Tot. (mq)	0	0	0
PF - PAESSAGGIO FORESTALE				PI - PAESSAGGIO INFRASTRUTTURALE - ROTATORIE			
INR - Prato	Espropri	Compensazioni	TOTALE	INR - Prato	Espropri	Compensazioni	TOTALE
Area Tot. (mq)	81.053	26.809	107.861	Area Tot. (mq)	1.429	0	1.429
INS - idrosemina	Espropri	Compensazioni	TOTALE	PIG - Ghiaia	Espropri	Compensazioni	TOTALE
Area Tot. (mq)	23.991	0	23.991	Area Tot. (mq)	3.804	0	0
PIG - Ghiaia	Espropri	Compensazioni	TOTALE				
Area Tot. (mq)	0	0	0				