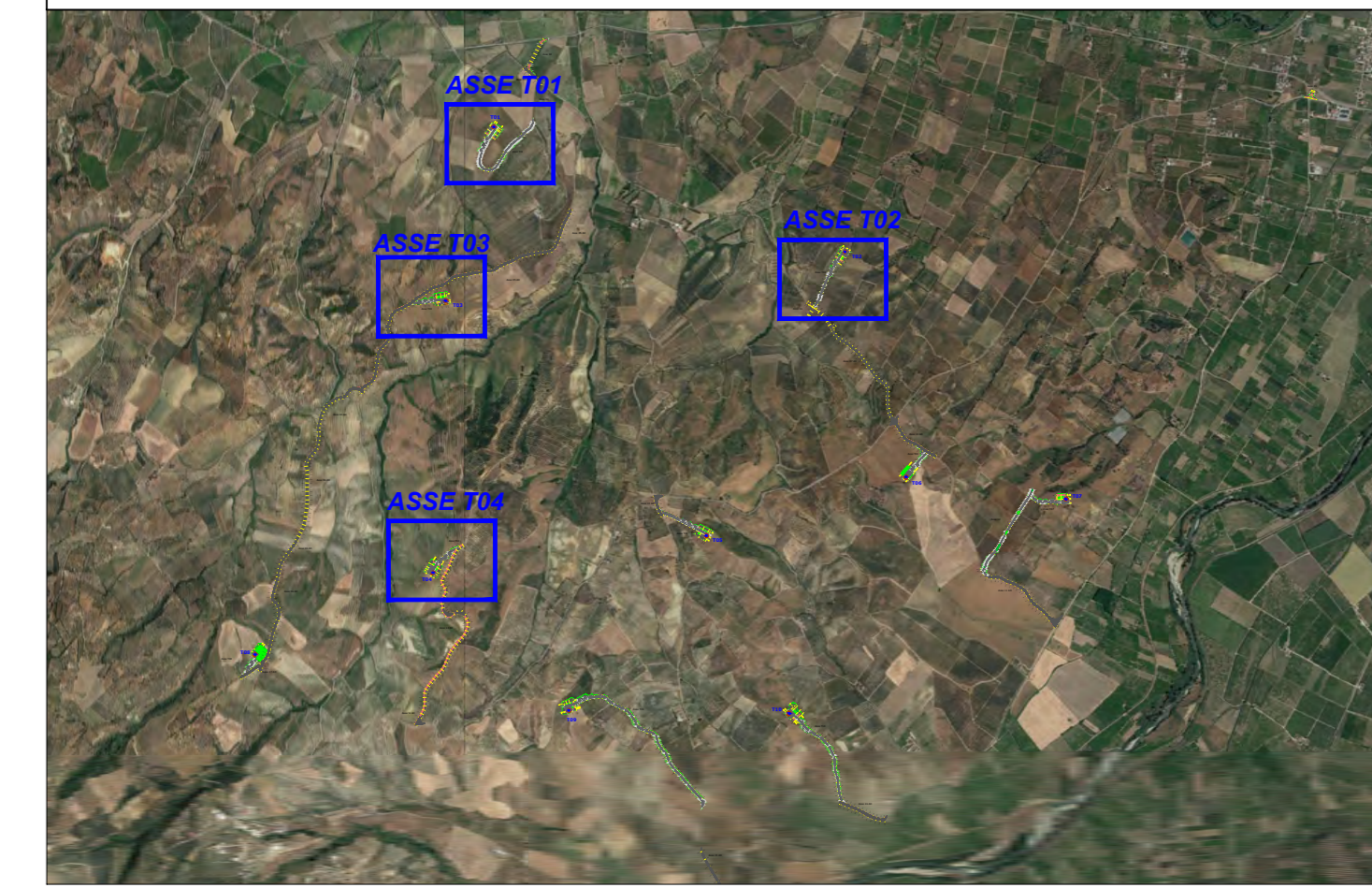


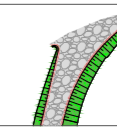
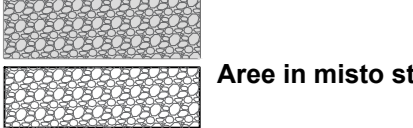
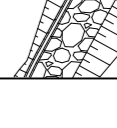
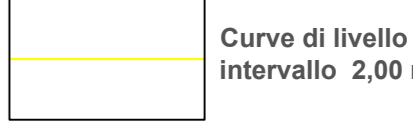
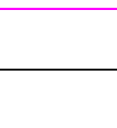


**Key-Map**



**LEGENDA**

 Posizione Aerogeneratori	 Aree rinverdito
 Nuova Viabilità	 Aree in misto stabilizzato
 Adeguamento della viabilità esistente (Asse x AD)	 Curve di livello Intervallo 2,00 mt.
 Curve di livello Intervallo 10,00 mt.	

**T01**

**T02**

Asse T01



Asse T02

Asse T04

Asse T03

**T03**

**T04**

					
Committente:  PLT RE s.r.l. via Eliciano 1280 47022 Cesena (FC) P.IVA/C.F. 04483450401					
Titolo del Progetto: <b>PARCO EOLICO "TERRANOVA"</b>					
Documento: <b>Progetto Definitivo</b>		N° Documento: <b>W-TER-P-VB-PP-01</b>			
ID PROGETTO: <b>W-TER</b>	DISCIPLINA: <b>P</b>	AMBITO: <b>VB</b>			
Elaborato: <b>Planimetria particolareggiata viabilità e Piazzole assi T01,T03,T02,T04</b>					
SCALA: <b>1:1000</b> Nome file: <b>W-TER-P-VB-PP-01_Planimetria particolareggiata viabilità e Piazzole assi T01,T03,T02,T04</b>					
Progettazione:  Ing. Saverio Pagliuso Ing. Mario Francesco Perri Ing. Giorgio Salatino Ing. Claudio Coscarella					
Rev:	Data Revisione	Descrizione Revisione	Redatto	Controllato	Approvato
00	FEBBRAIO 2023	PRIMA EMISSIONE	GEMSA	GEMSA	PLT RE