

Comune
COMUNE DI PICERNO (PZ)

Opera
Valutazione di Impatto Ambientale (Art. 23 D.lgs. 152/06)
COSTRUZIONE DI IMPIANTO FOTOVOLTAICO E DELLE OPERE DI RETE Pn 12,559 MWp
in località "Serralta"

Localizzazione
Foglio 50 P.lle 55, 81, 126, 129, 136, 215, 218, 220
Foglio 52 P.lle 53, 91, 120, 121, 128, 261, 360, 361, 362, 363, 364, 365, 366, 367, 368, 370

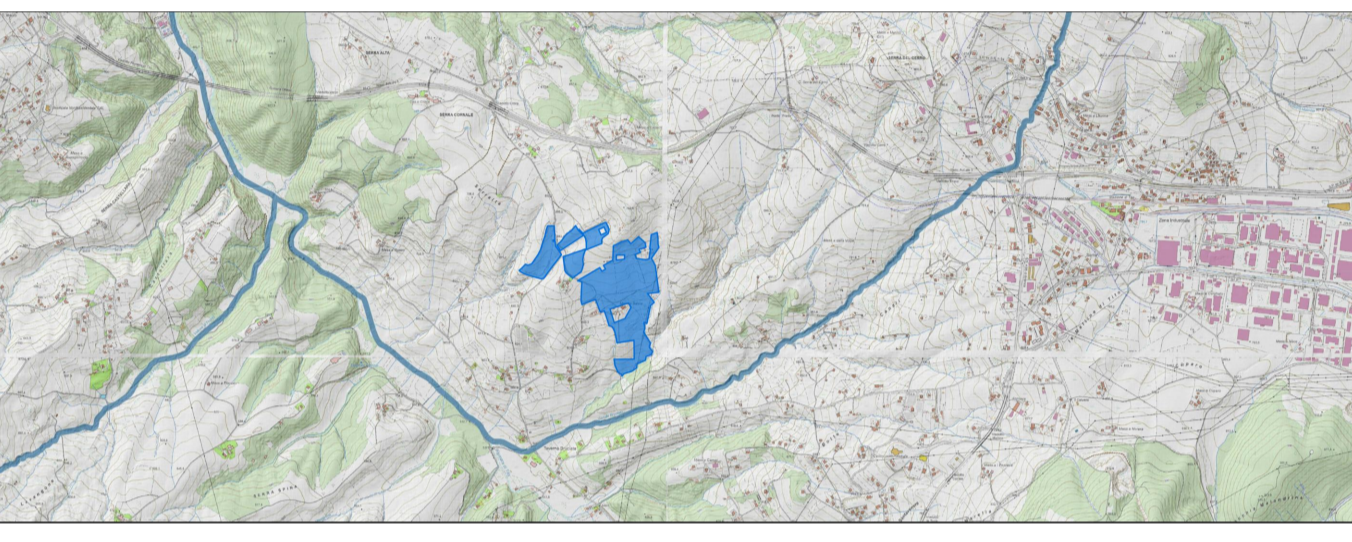
Committente
SOLAR ORIENTALIS S.R.L.

Progettazione
ENERGY PROJECT SYSTEM
EPS ENGINEERING SRL
 P.I. 03953670613 | R.E.A. CE -286561
 Via Vito di Jasi 20 | 81031 Aversa (Ce)
 T. +39 081-503.14.00 | www.epsnet.it
 Società certificata
 EscO UNI CEI 11352:2014
 EGE UNI CEI 11339:2009
 QMS UNI EN ISO 9001:2015
 Team di Progetto: ing. Arduino ESPOSITO
 arch. Emiliano MIELE
 arch. Massimiliano MAFFEI
 geol. Franco GIANCRISTIANO
 Direttore Tecnico: ing. Giuseppe ZANNELLI

Objetto
CARTA CON LOCALIZZAZIONE GEOREFERENZIATA

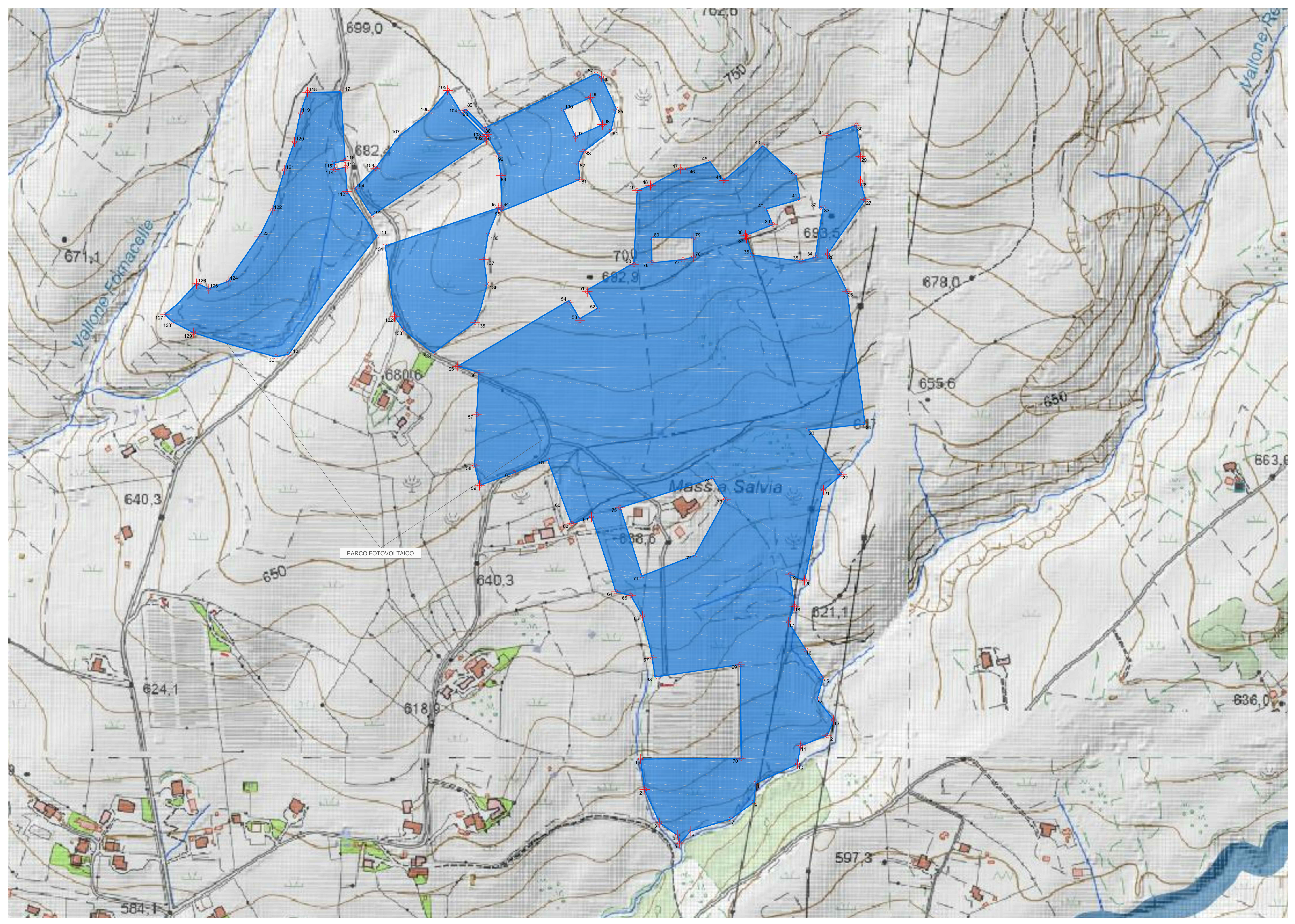
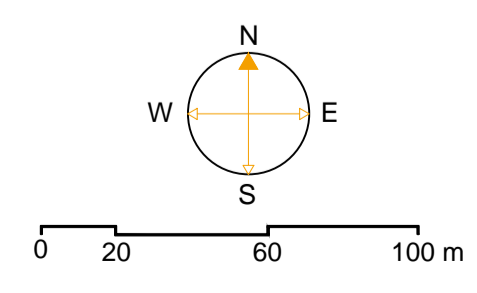
Rev.	Descrizione	Data	CRI	Scala	Tavola
01	Prima emissione	07.07.2022	FTV04931	1:2.000	T.23
02					
03					
04					
05					
06					

eps **VIRIDI**
Questo disegno e di nostra proprietà riservata secondo termini di legge e ne è vietata la riproduzione anche parziale senza nostra autorizzazione scritta



LEGENDA

- Impianto fotovoltaico
- 0 + 138 Punto con coordinate georeferite



Sistema di riferimento:
GAUSS-BOAGA - Roma 40 Fuso Est

Numero Punto	Coord. Est	Coord. Nord
1	2576022.54	4484028.54
2	2576027.06	4484032.95
3	2576044.78	4484043.49
4	2576068.08	4484064.74
5	2576088.66	4484092.22
6	2576081.76	4484443.37
7	2576128.99	4484047.90
8	2576156.77	4484077.77
9	2576184.63	4484062.33
10	2576208.10	4484023.21
11	2576211.54	4484046.17
12	2576243.03	4484058.82
13	2576250.97	4484075.07
14	2576231.39	4484002.21
15	2576238.27	4484035.35
16	2576278.48	4484032.52
17	2576277.28	4484002.90
18	2576284.93	4484105.54
19	2576281.11	4484247.06
20	2576216.57	4484740.44
21	2576280.80	4484247.24
22	2576280.23	4484002.90
23	2576220.81	4484018.51
24	2576297.75	4484025.39
25	2576243.69	4485126.61
26	2576297.27	4484018.51
27	2576288.48	4485191.11
28	2576282.92	4485241.91
29	2576278.02	4485278.82
30	2576242.83	4485278.18
31	2576242.83	4485278.18
32	2576242.83	4485278.18
33	2576242.83	4485278.18
34	2576242.83	4485278.18
35	2576211.61	4485130.06
36	2576163.06	4485277.74
37	2576147.78	4485148.87
38	2576187.72	4485148.87
39	2576179.00	4485161.21
40	2576170.99	4485178.93
41	2576211.08	4485191.44
42	2576208.45	4485192.22
43	2576208.45	4485192.22
44	2576120.99	4485213.37
45	2576104.61	4485235.53
46	2576077.79	4485227.16
47	2576084.46	4485235.76
48	2576034.40	4485207.28
49	2576018.26	4485201.36
50	2576014.55	4485116.53
51	2576002.82	4484984.19
52	2576017.42	4485082.18
53	2576049.99	4485080.28
54	2576027.29	4485071.46
55	2576068.26	4484993.29
56	2576036.06	4485036.06
57	2576027.83	4484936.06
58	2576025.61	4484876.14
59	2576031.82	4484802.27
60	2576027.24	4484802.27
61	2576011.08	4484802.27
62	2576011.08	4484802.27
63	2576044.26	4484815.59
64	2576031.12	4484727.21
65	2576020.85	4484727.21
66	2576020.85	4484727.21
67	2576035.85	4484651.41
68	2576039.69	4484625.88
69	2576140.50	4484640.82
70	2576141.98	4484625.88
71	2576023.81	4484745.80
72	2576007.05	4484770.21
73	2576123.04	4484838.82
74	2576107.69	4484838.82
75	2576041.41	4484838.82
76	2576035.85	4485116.16
77	2576072.63	4485118.73
78	2576084.67	4485122.64
79	2576084.67	4485145.21
80	2576035.72	4485145.93
81	2576050.26	4485141.99
82	2576048.54	4485234.17
83	2576050.02	4485234.17
84	2576050.02	4485234.17
85	2576033.39	4485208.07
86	2576076.32	4485238.30
87	2576069.79	4485239.61
88	2576071.27	4485275.58
89	257615.58	4485297.90
90	257611.74	4485296.46
91	2576040.32	4485298.43
92	2576040.32	4485298.43
93	2576058.98	4485219.78
94	2576077.78	4485181.78
95	2576061.19	4485181.66
96	2576068.87	4485178.89
97	2576046.38	4485058.41
98	2576077.11	4485277.56
99	257602.82	4485208.46
100	2576030.94	4485295.16
101	2576071.18	4485172.85
102	2576039.92	4485281.82
103	2576036.74	4485287.11
104	257610.29	4485293.57
105	2576193.35	4485293.29
106	2576174.45	4485296.36
107	257678.84	4485268.17
108	2576707.09	4485296.36
109	257604.67	4485264.67
110	2576087.78	4485268.81
111	257679.47	4485148.84
112	2576767.08	4485200.70
113	257672.43	4485228.75
114	257660.79	4485227.16
115	257660.69	4485214.17
116	257672.17	4485238.82
117	257667.40	4485192.24
118	257667.19	4485172.85
119	257676.29	4485295.88
120	2576612.37	4485293.97
121	257660.73	4485227.16
122	2576588.97	4485181.66
123	2576514.05	4485294.96
124	2576510.23	4485268.87
125	2576495.65	4485291.69
126	2576468.37	4485268.23
127	2576467.98	4485268.81
128	2576463.83	4485292.95
129	2576463.83	4485292.95
130	2576463.83	4485292.95
131	2576463.83	4485292.95
132	2576463.83	4485292.95
133	2576463.83	4485292.95
134	2576463.83	4485292.95
135	2576463.83	4485292.95
136	2576463.83	4485292.95
137	2576463.83	4485292.95
138	2576463.83	4485292.95