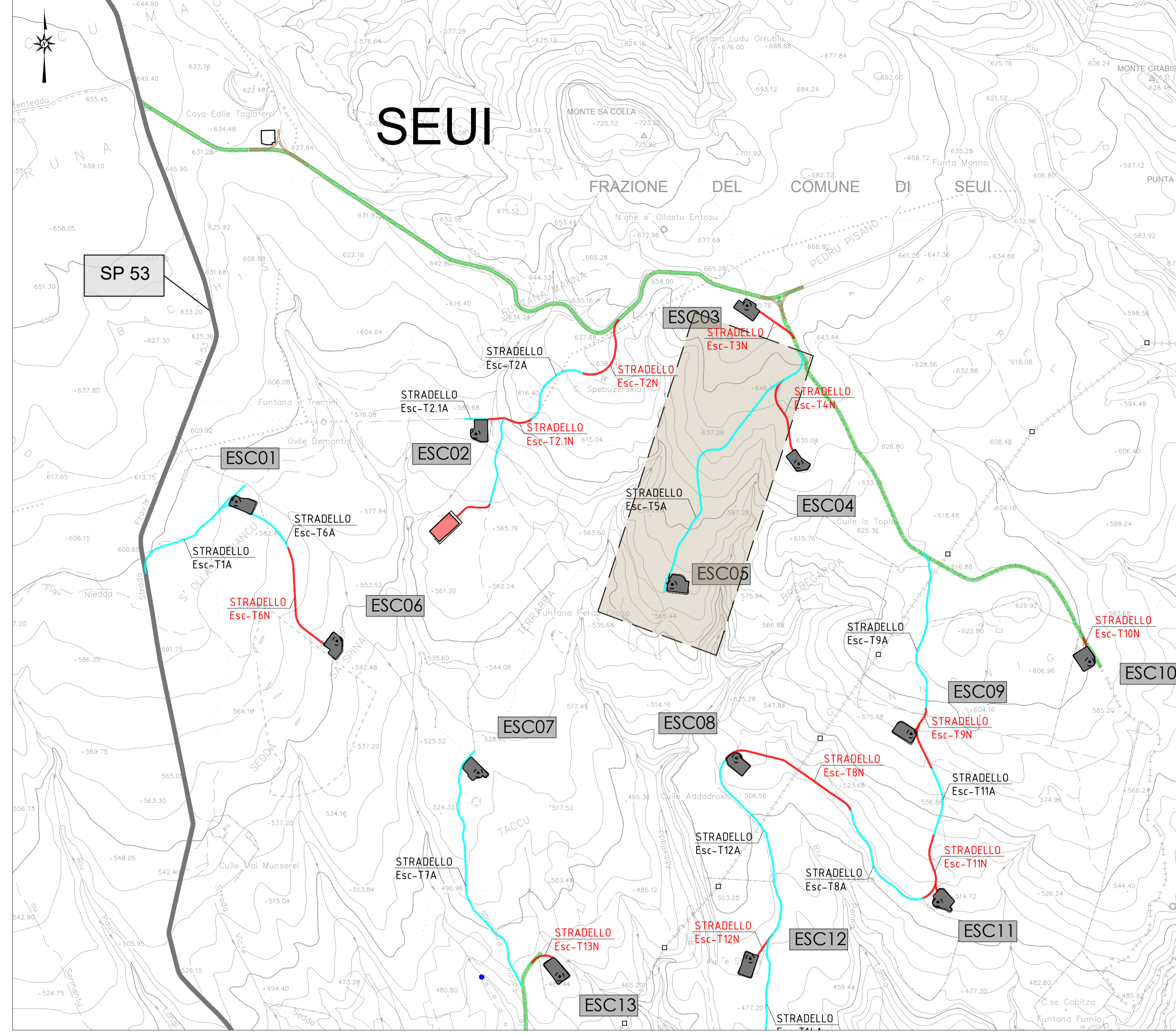
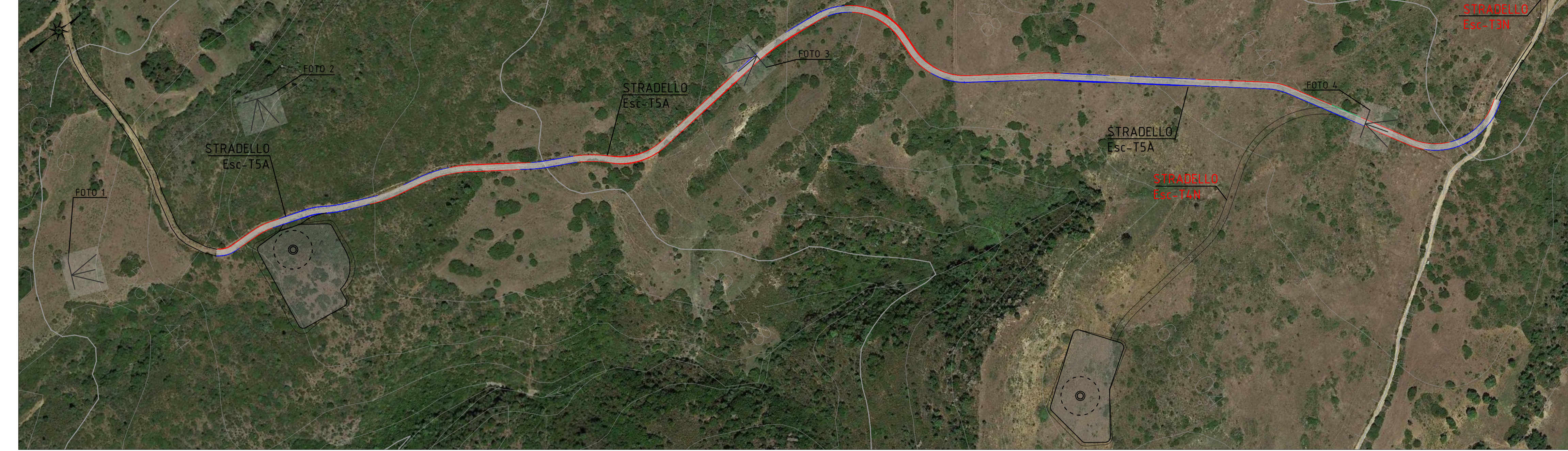


QUADRAMENTO GENERALE INTERVENTI DI ADEGUAMENTO E NUOVA VIABILITA' DI ACCESSO ALLE PIAZZOLE SCALA 1:10.000

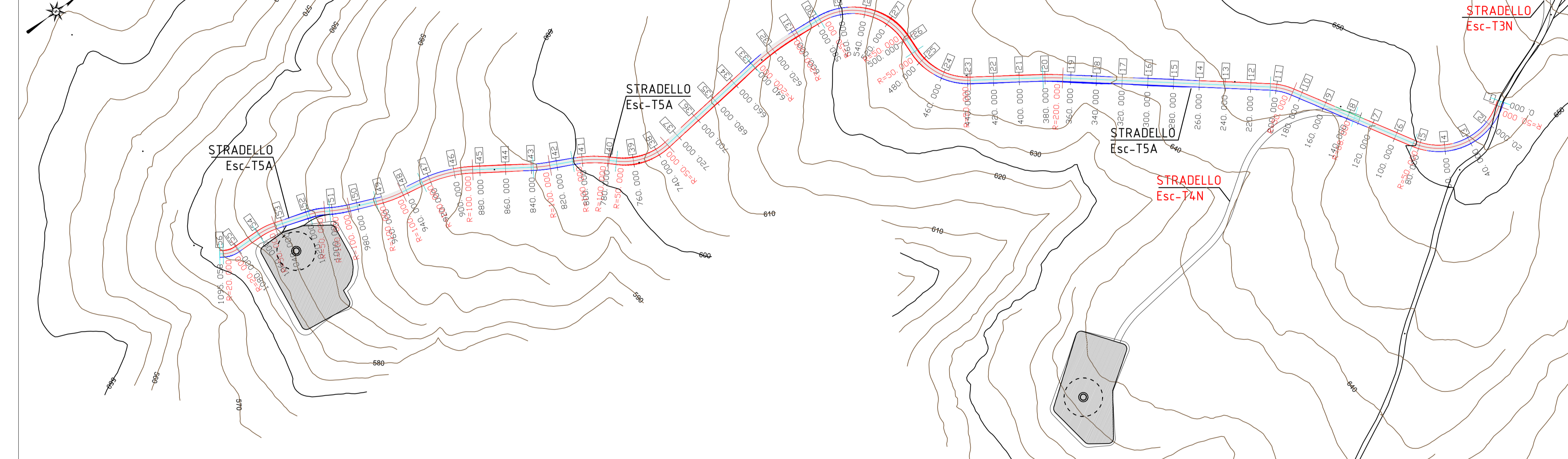


PLANIMETRIA VIABILITA' DI PROGETTO NUOVA TRATTO ESC-T5A SU FOTO AEREA E CURVE DI LIVELLO DA CTR SCALA 1:2000



PLANIMETRIA VIABILITA' DI PROGETTO NUOVA TRATTO ESC-T5A SCALA 1:2000

AEROFOTOGRAMMETRIA-Equidistanza curve di livello 2,5/5,0 m



ESC-T5A FOTO 01



ESC-T5A FOTO 02



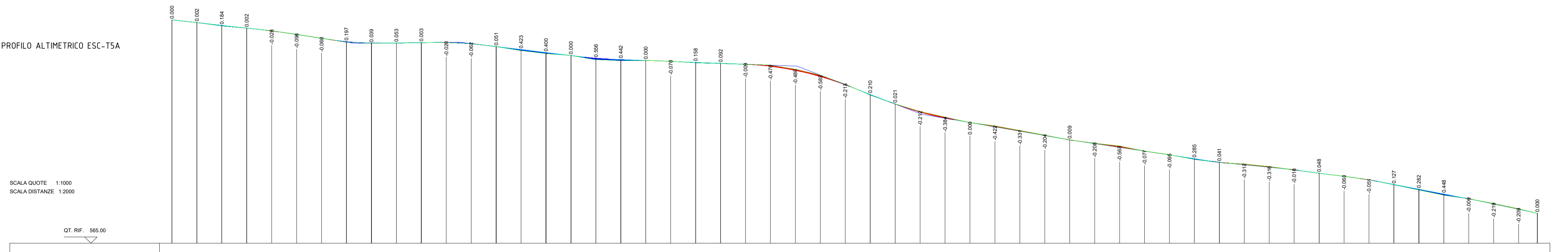
ESC-T5A	Lunghezza (m)	Volume scavo (m³)	Volume riporto (m³)
ESC-T5A	1071	669.08	491.32

- LEGENDA**
- PROFILO TERRENO
 - PROFILO PROGETTO
 - PIANO STRADA IN PROGETTO
 - AREA DI RIPORTO
 - AREA DI SCAVO

PROFILO ALTIMETRICO ESC-T5A

SCALA QUOTE 1:1000
SCALA DISTANZE 1:2000

QT. REF. 966.00



NUMERO SEZIONI	1	2	3	4	5	6	7	8	9	10	11	12	13	14	15	16	17	18	19	20	21	22	23	24	25	26	27	28	29	30	31	32	33	34	35	36	37	38	39	40	41	42	43	44	45	46	47	48	49	50	51	52	53	54	55	56											
DISTANZE PARZIALI	20.00	20.00	20.00	20.00	20.00	20.00	20.00	20.00	20.00	20.00	20.00	20.00	20.00	20.00	20.00	20.00	20.00	20.00	20.00	20.00	20.00	20.00	20.00	20.00	20.00	20.00	20.00	20.00	20.00	20.00	20.00	20.00	20.00	20.00	20.00	20.00	20.00	20.00	20.00	20.00	20.00	20.00	20.00	20.00	20.00	20.00	20.00	20.00	20.00	20.00	20.00	20.00	20.00														
DISTANZE PROGRESSIVE	0.00	654.63	654.63	10.00	30.00	50.00	70.00	90.00	110.00	130.00	150.00	170.00	190.00	210.00	230.00	250.00	270.00	290.00	310.00	330.00	350.00	370.00	390.00	410.00	430.00	450.00	470.00	490.00	510.00	530.00	550.00	570.00	590.00	610.00	630.00	650.00	670.00	690.00	710.00	730.00	750.00	770.00	790.00	810.00	830.00	850.00	870.00	890.00	910.00	930.00	950.00	970.00	990.00	1010.00	1030.00	1050.00	1070.00	1090.00	1110.00								
QUOTE TERRENO	0.00	0.00	-0.18	-0.00	-0.02	-0.10	-0.08	-0.19	-0.04	-0.06	-0.06	-0.02	-0.07	0.05	-0.43	-0.40	-0.00	-0.56	-0.44	-0.00	-0.16	-0.09	-0.08	-0.01	-0.47	-0.47	-0.59	-0.71	-0.21	-0.02	-0.22	-0.39	-0.00	-0.42	-0.00	-0.56	-0.07	-0.16	-0.09	-0.32	-0.02	-0.05	-0.07	-0.28	-0.45	-0.01	-0.22	-0.21	0.00	-0.00	-0.00	-0.00	-0.00	-0.00	-0.00	-0.00	-0.00										
QUOTE PROGETTO	0.00	0.00	-0.18	-0.00	-0.02	-0.10	-0.08	-0.19	-0.04	-0.06	-0.06	-0.02	-0.07	0.05	-0.43	-0.40	-0.00	-0.56	-0.44	-0.00	-0.16	-0.09	-0.08	-0.01	-0.47	-0.47	-0.59	-0.71	-0.21	-0.02	-0.22	-0.39	-0.00	-0.42	-0.00	-0.56	-0.07	-0.16	-0.09	-0.32	-0.02	-0.05	-0.07	-0.28	-0.45	-0.01	-0.22	-0.21	0.00	-0.00	-0.00	-0.00	-0.00	-0.00	-0.00	-0.00	-0.00	-0.00	-0.00	-0.00	-0.00						
DIFFERENZA DI QUOTA	0.00	0.00	0.00	0.00	0.00	0.00	0.00	0.00	0.00	0.00	0.00	0.00	0.00	0.00	0.00	0.00	0.00	0.00	0.00	0.00	0.00	0.00	0.00	0.00	0.00	0.00	0.00	0.00	0.00	0.00	0.00	0.00	0.00	0.00	0.00	0.00	0.00	0.00	0.00	0.00	0.00	0.00	0.00	0.00	0.00	0.00	0.00	0.00	0.00	0.00	0.00	0.00	0.00	0.00	0.00	0.00	0.00	0.00	0.00	0.00	0.00	0.00	0.00	0.00	0.00	0.00	0.00
LIVELLETTE	PENDENZA	i = -0.05475			i = -0.07581			i = 0.00479			i = -0.06000			i = -0.01903			i = -0.19302			i = -0.08713			i = -0.07508			i = -0.04949			i = -0.00648			i = -0.09525			i = -0.10707																																

0	18/03/23	EMISSO PER PROCEDURA DI MA	FAD	SARTEC	SARTEC
Rev.	Data	Descrizione	Dis.	Contr.	Appr.

PARCO EOLICO AMSTADE
PROGETTO DI UN PARCO EOLICO
NEI TERRITORI COMUNALI DI ESTERZILLI E DI ESCALAPLANO (SU)
PROGETTO DEFINITIVO OPERE CIVILI

Disegnato con CAD: evitare correzioni a mano.
Il presente disegno è di proprietà di Sarac Ricerche e Tecnologie che ne tutela i diritti e termini di legge.

Commessa n° 2021353-ING000
Dis: n° AMST_PC_T006.3d
Revisione: 0
Scala: Varie
Sostituisce R: //
Sostituito da: //