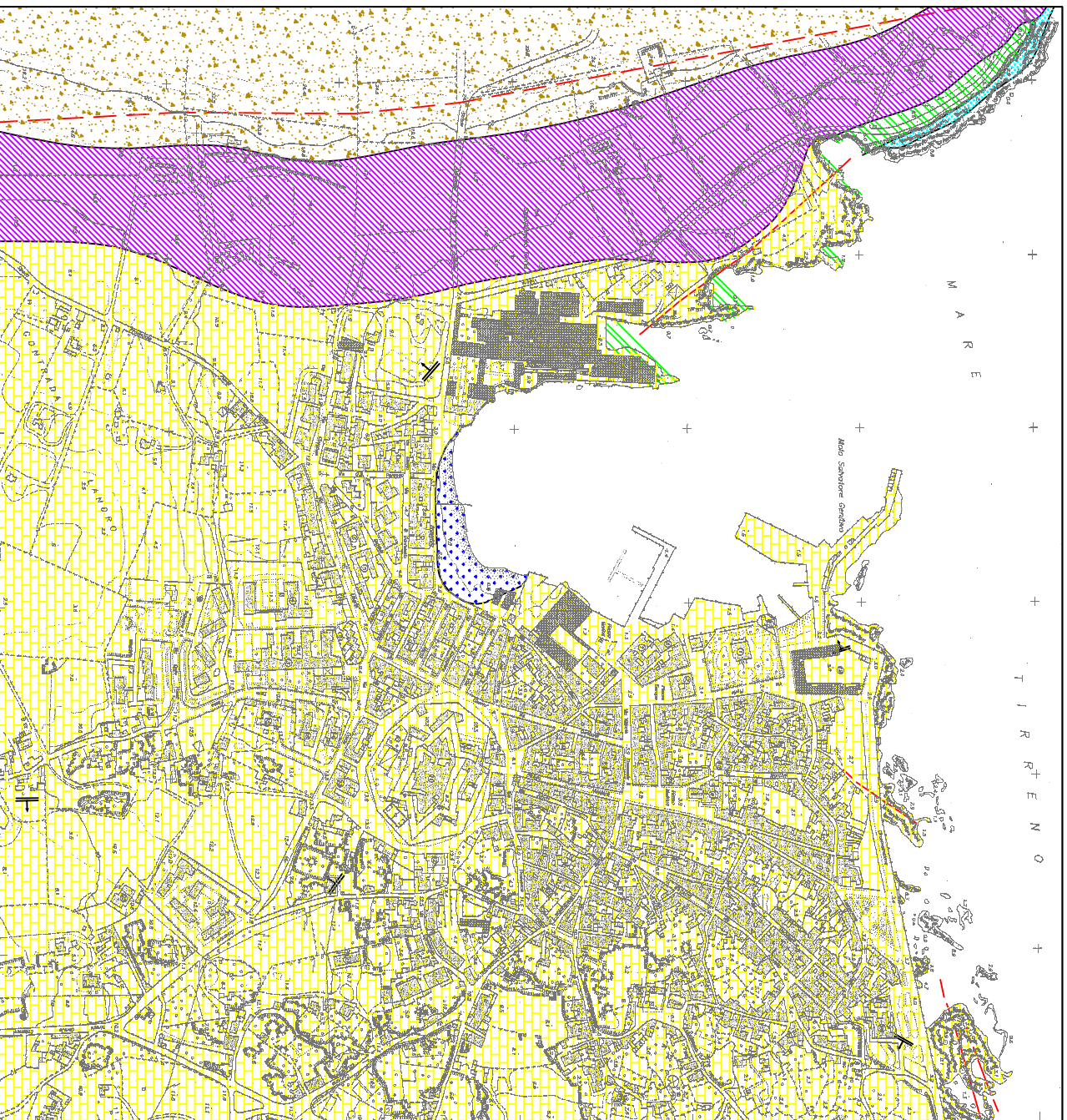
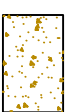


CARTA GEOLOGICA

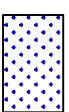
IN SCALA 1:5.000



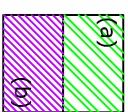
LEGENDA



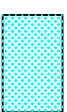
Detriti di falda



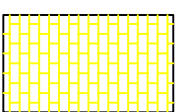
Depositi di spiaggia



Calcarenti e sabbie quarzose eoliche "Dune"(a); Fanglomerati, sabbie eoliche e silti argillosi con intercalazioni di ciottoli, paleosuoli e colluvi indifferenziati (b) (Pleistocene sup.-Olocene)



Conglomerati, sabbie e biocalcarenti a lamellibranchi, gasteropodi, echinidi, coralli, etc. (Tirreniano)



Conglomerati e calcareniti a lamellibranchi e gasteropodi, calcareniti bioclastiche, sabbie e calcareniti a stratificazione parallela ed incrociata, calcareniti e sabbie caotiche dovute a frammenti sin sedimentari, sabbie e calcareniti (Pleistocene inf.)

Segni Convenzionali



Limite litologico



Faglie (a tratti ove presunte)



Faglie inverse (a tratti ove presunte)



D.I.P.: 0° ÷ 10°