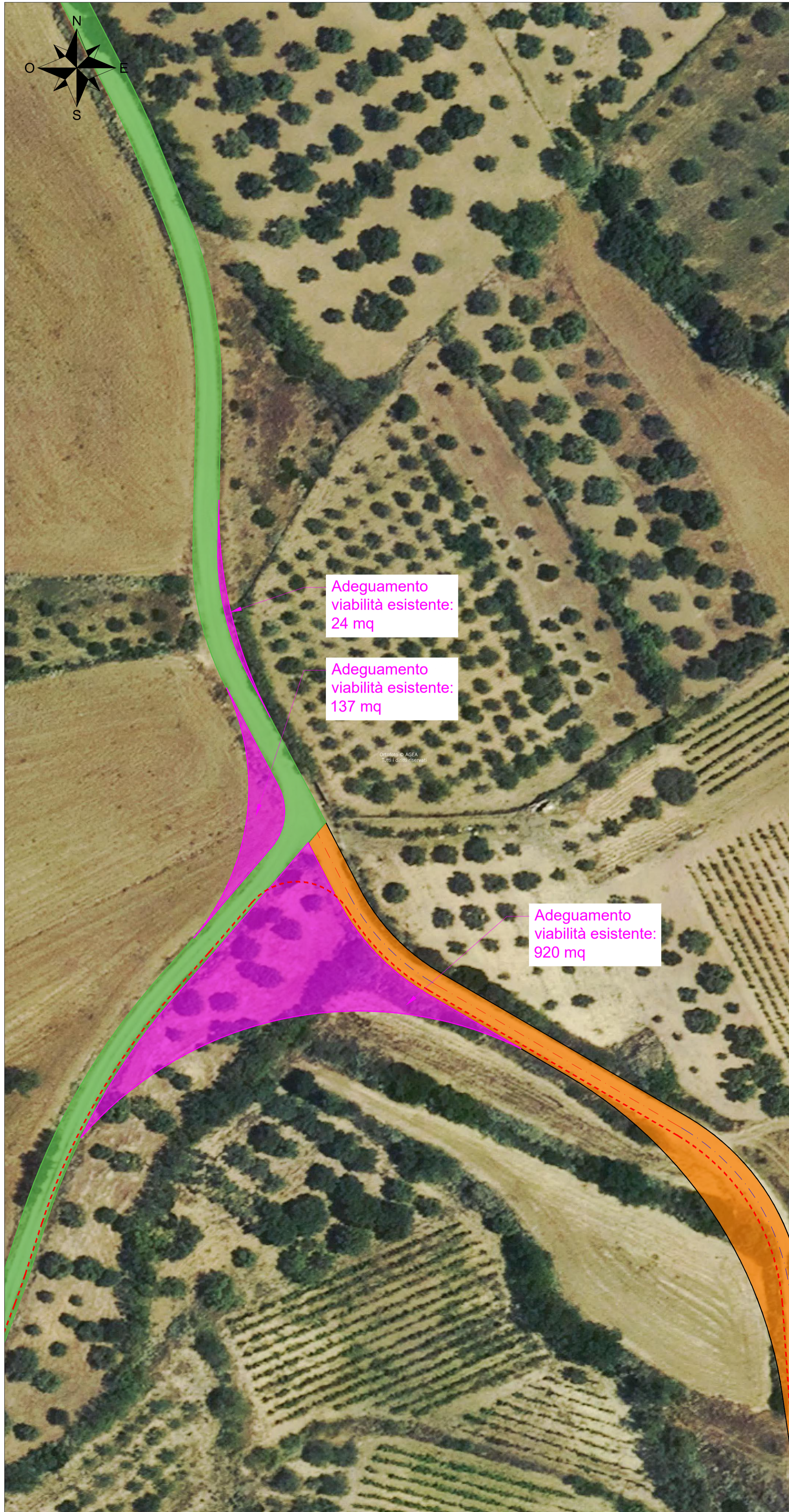
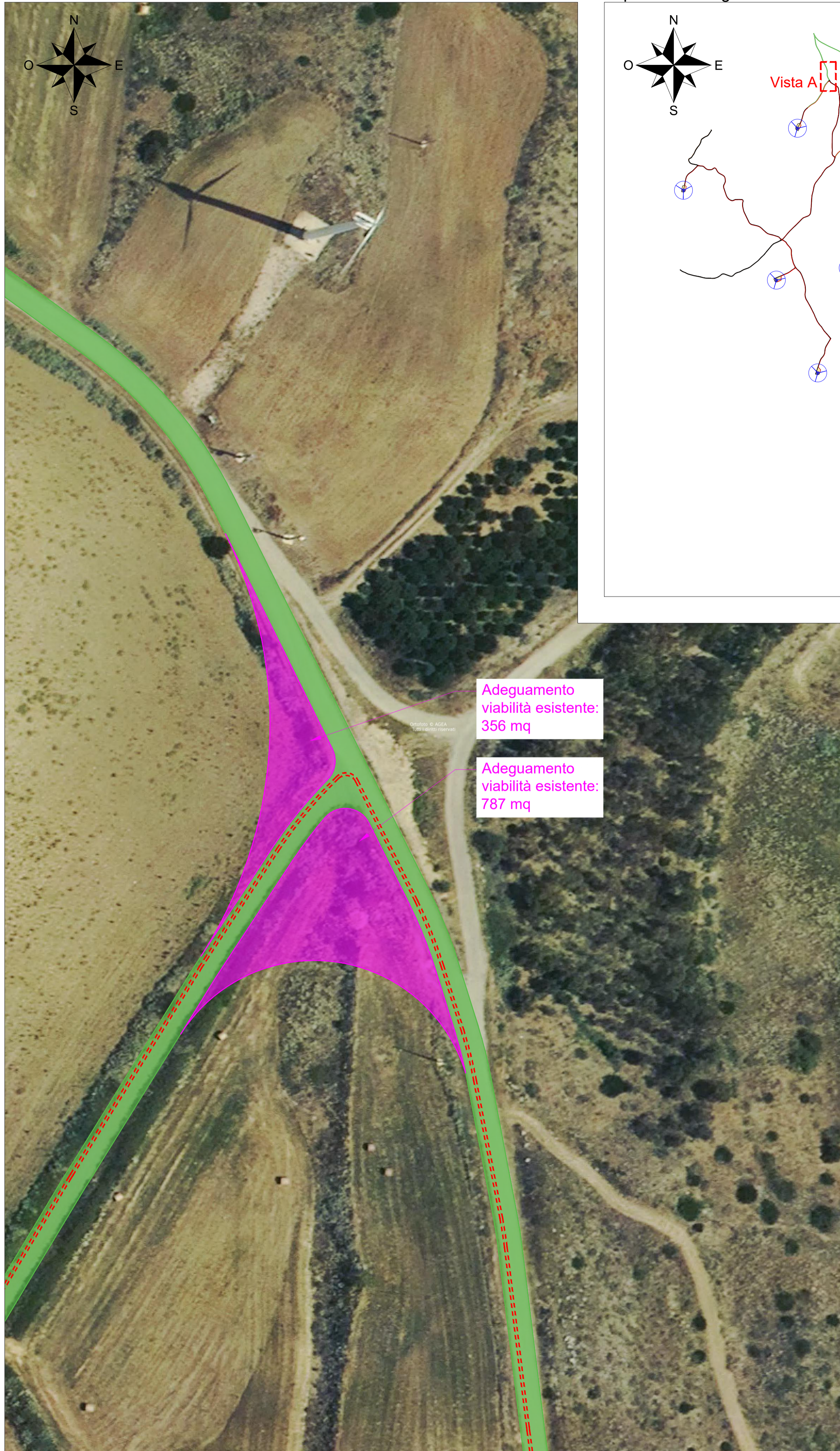


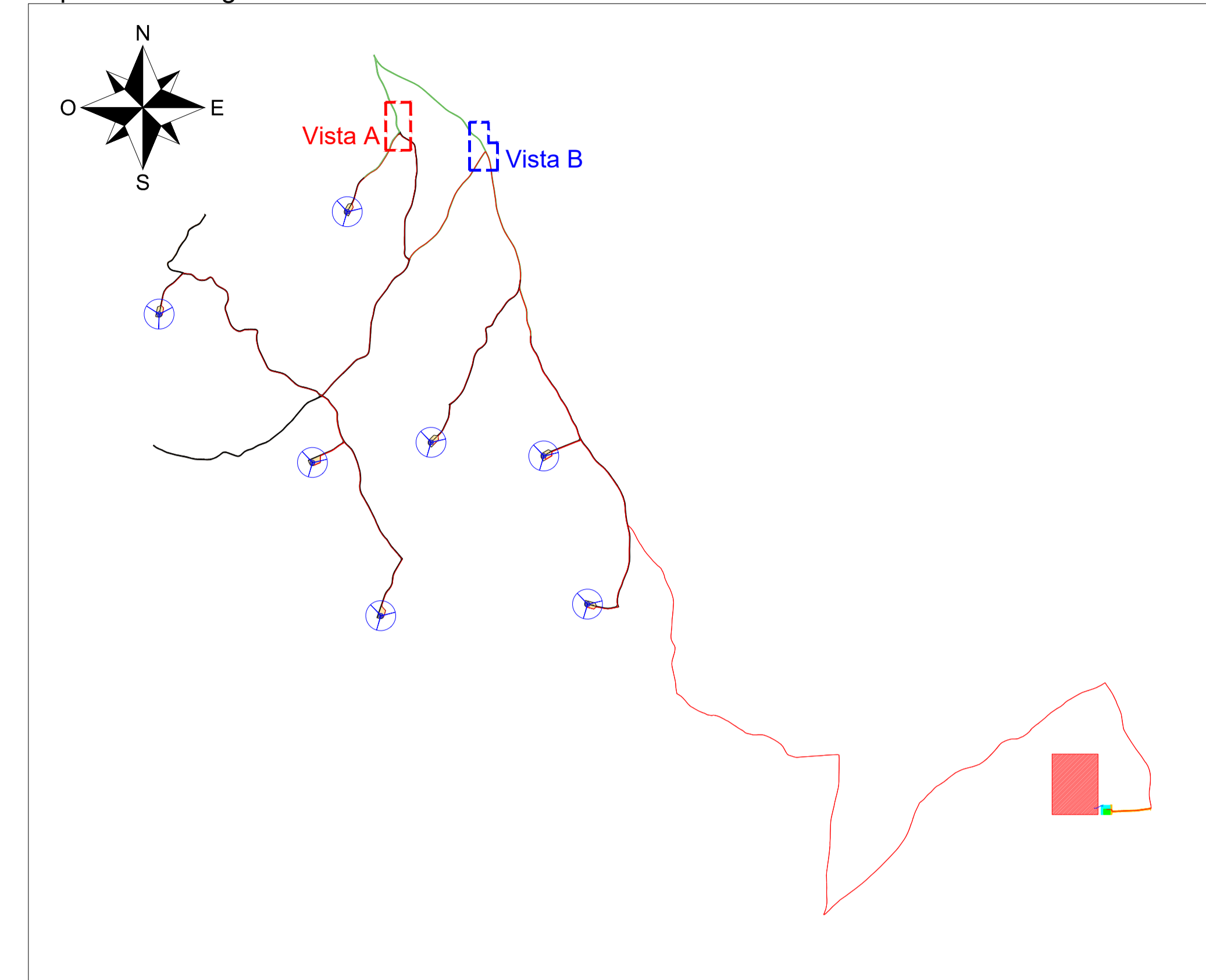
Vista A - Scala 1:500



Vista B - Scala 1:500



Inquadramento generale - Scala 1:25000



LEGENDA

- Strade e piazzole definitive in fase di costruzione - Nuova realizzazione
- Strade esistenti da adeguare
- Strade esistenti
- Adeguamenti temporanei strade esistenti
- Tratti rettilinei - Assi stradali
- Tratti curvilinei - Assi stradali
- Limiti carreggiata
- Cavidotto MT 30kV

COMMITTENTE
ENGIE TREXENTA SRL
 P.Iva: 12367510968
 Via Chiese 72, Milano 20126

STUDIO DI PROGETTAZIONE
SCM Ingegneria S.r.l.
 Via C. del Croix, 55 - 72022 - Latiano (BR)



REV.	DATE	DESCRIPTION	BY	CHKD	APP.
0	Apr-23	EMESSO PER ITER AUTORIZZATIVO			
REVISIONS					
Impianto per la produzione di energia elettrica da fonte eolica di potenza pari a 42 MW denominato "Marmilla" Comuni di Villanovafornu, Sardara, Sanluri e Furti (SU) PROGETTO DEFINITIVO IMPIANTO EOLICO ED OPERE CONNESSE			APPROVED FOR CONSTRUCTION DWG. REV. DATE SIGNATURE ORDER N° SUPPLIER CONTRACT N°		
OBJECT: Tav.13 Planimetria parco eolico - Adeguamenti viabilità esistente			SUBPROJECT CODE: THIS DWG. SUPERSEDED BY SCALE THIS DWG. SUPERSEDES 1:500 FW DWG N° REV. SHEET OF A0		
<small>THIS DRAWING IS THE PROPERTY OF ENGIE TREXENTA SRL AND IS LENT WITH-OUT CONSIDERATION OTHER THAN THE BORROWER'S AGREEMENT THAT IT SHALL NOT BE REPRODUCED COPIED LENT OR DISPOSED OF DIRECTLY OR INDIRECTLY, NOR USED FOR ANY PURPOSE OTHER THAN THAT FOR WHICH IT IS SPECIFICALLY FURNISHED THE APPARATUS SHOWN IN THE DRAWING IS COVERED BY PATENTS.</small>					
CAD FILE NAME:					