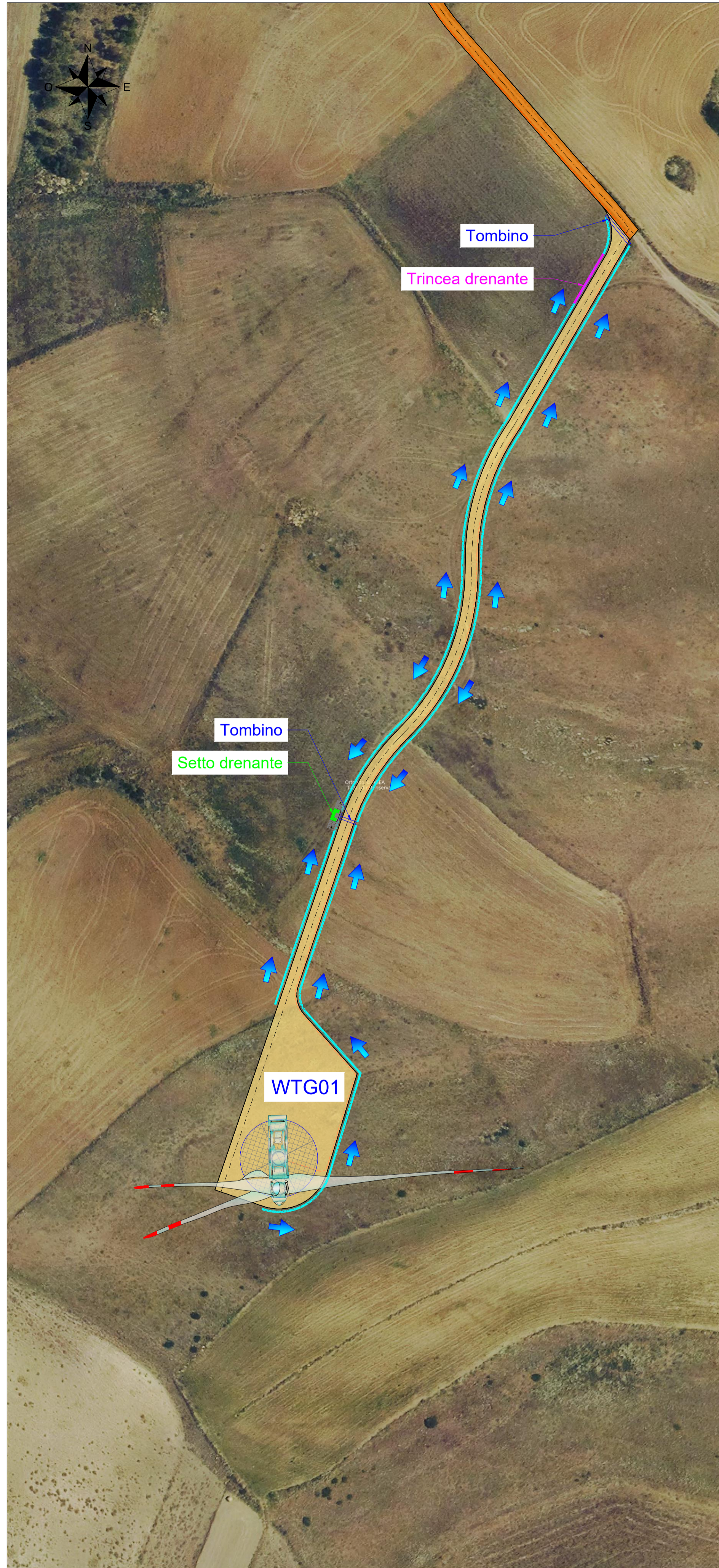
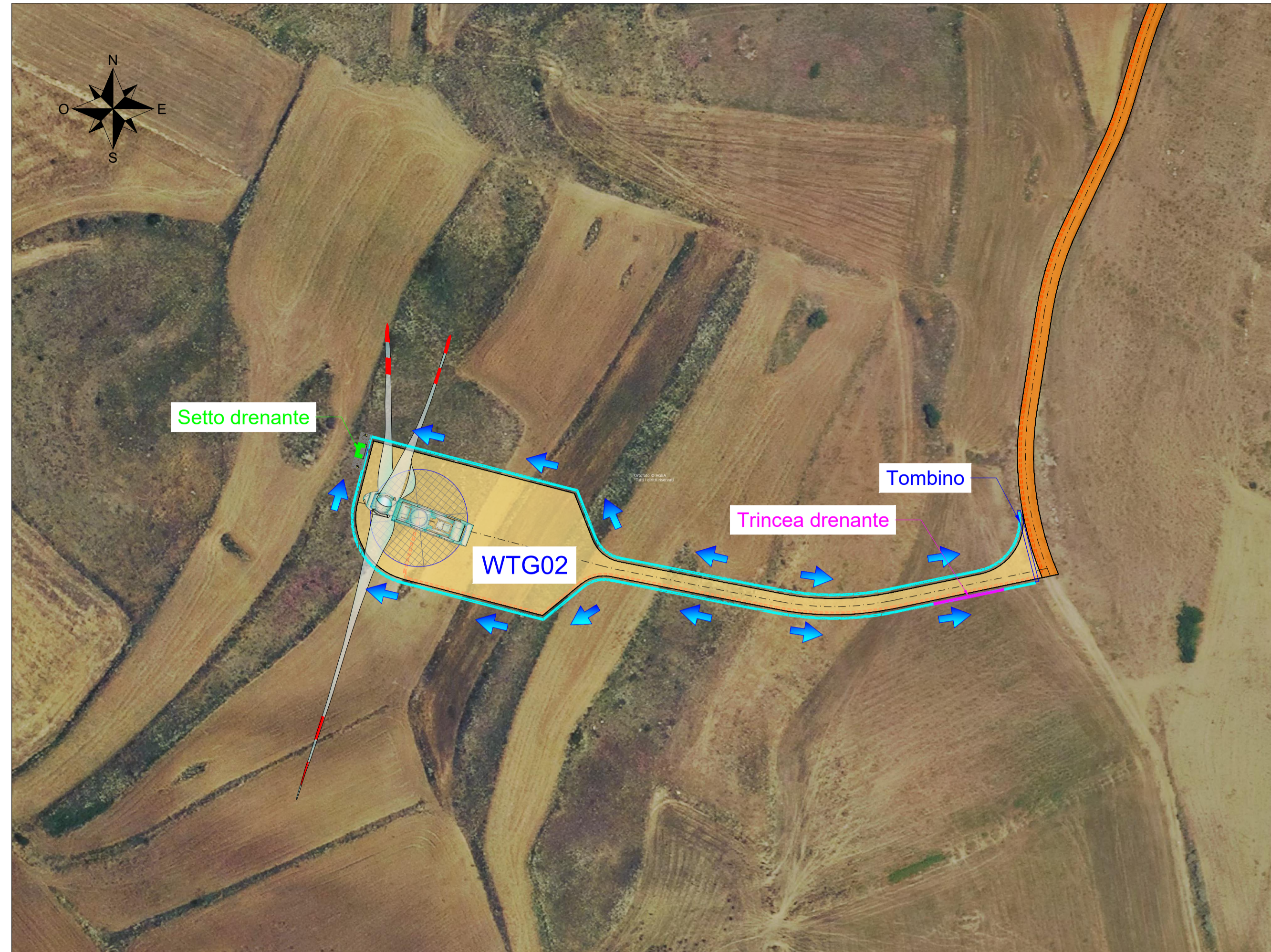


Vista A - Scala 1:1000



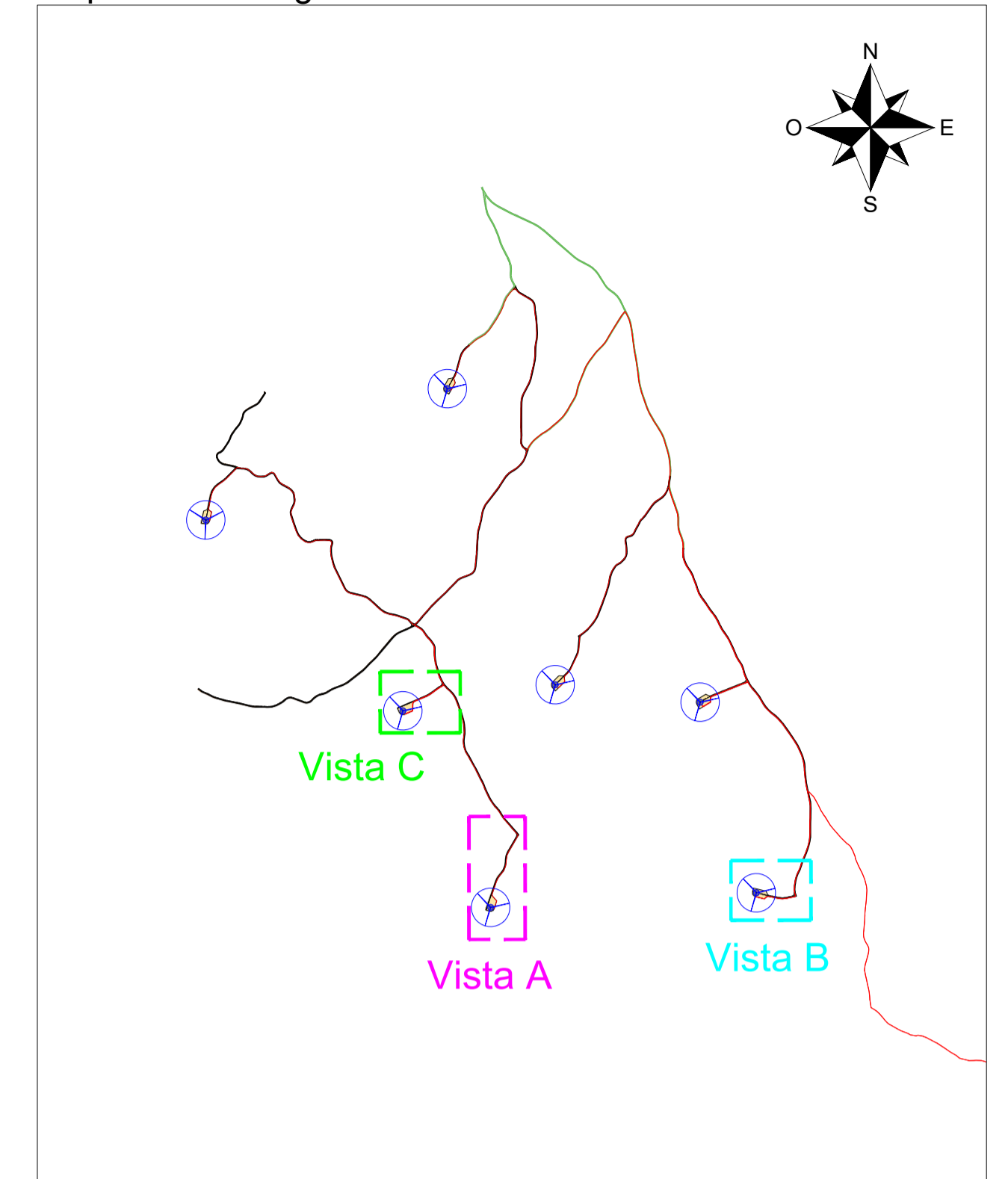
Vista B - Scala 1:1000



Vista C - Scala 1:1000



Inquadramento generale - Scala 1:25000



LEGENDA

- Aerogeneratore
- Strade e piazzole definitive in fase di esercizio - Nuova realizzazione
- Strade esistenti da adeguare
- Strade esistenti
- Limiti carreggiata
- Assi stradali
- Cunetta/Fosso di guardia in terra
- Trincee drenanti
- Setto drenante/monitoraggio ambientale
- Tombini
- Senso di deflusso acque

COMMITTENTE  
 ENGIE TREXENTA SRL  
 P.Iva: 12367510968  
 Via Chiese 72, Milano 20126

STUDIO DI PROGETTAZIONE  
 SCM Ingegneria S.r.l.  
 Via C. del Croix, 55 - 72022 - Latiano (BR)



REV.	DATE	DESCRIPTION	BY	CHKD	APP.
0	Apr-23	EMESSO PER ITER AUTORIZZATIVO			
REVISIONS					
<b>Impianto per la produzione di energia elettrica da fonte eolica di potenza pari a 42 MW denominato "Marmilla"</b> Comuni di Villanovafornu, Sardara, Sanluri e Furtei (SU) <b>PROGETTO DEFINITIVO IMPIANTO EOLICO ED OPERE CONNESSE</b>			APPROVED FOR CONSTRUCTION DWG. REV.      DATE SIGNATURE ORDER N° SUPPLIER CONTRACT N°		
OBJECT: <b>Tav.21a</b> <b>Planimetria con identificazione deflusso acque e pere idrauliche</b>			SUBPROJECT CODE: THIS DWG. SUPERSEDED BY      SCALE THIS DWG. SUPERSEDES      1:1000 FWI DWG N°      1:25000 SHEET      OF      REV.		
THIS DRAWING IS THE PROPERTY OF ENGIE TREXENTA SRL AND IS LOANED WITH-OUT CONSIDERATION OTHER THAN THE BORROWER'S AGREEMENT THAT IT SHALL NOT BE REPRODUCED COPIED LENT OR DISPOSED OF DIRECTLY OR INDIRECTLY, NOR USED FOR ANY PURPOSE OTHER THAN THAT FOR WHICH IT IS SPECIFICALLY FURNISHED THE APPARATUS SHOWN IN THE DRAWING IS COVERED BY PATENTS.					
CAD FILE NAME:					