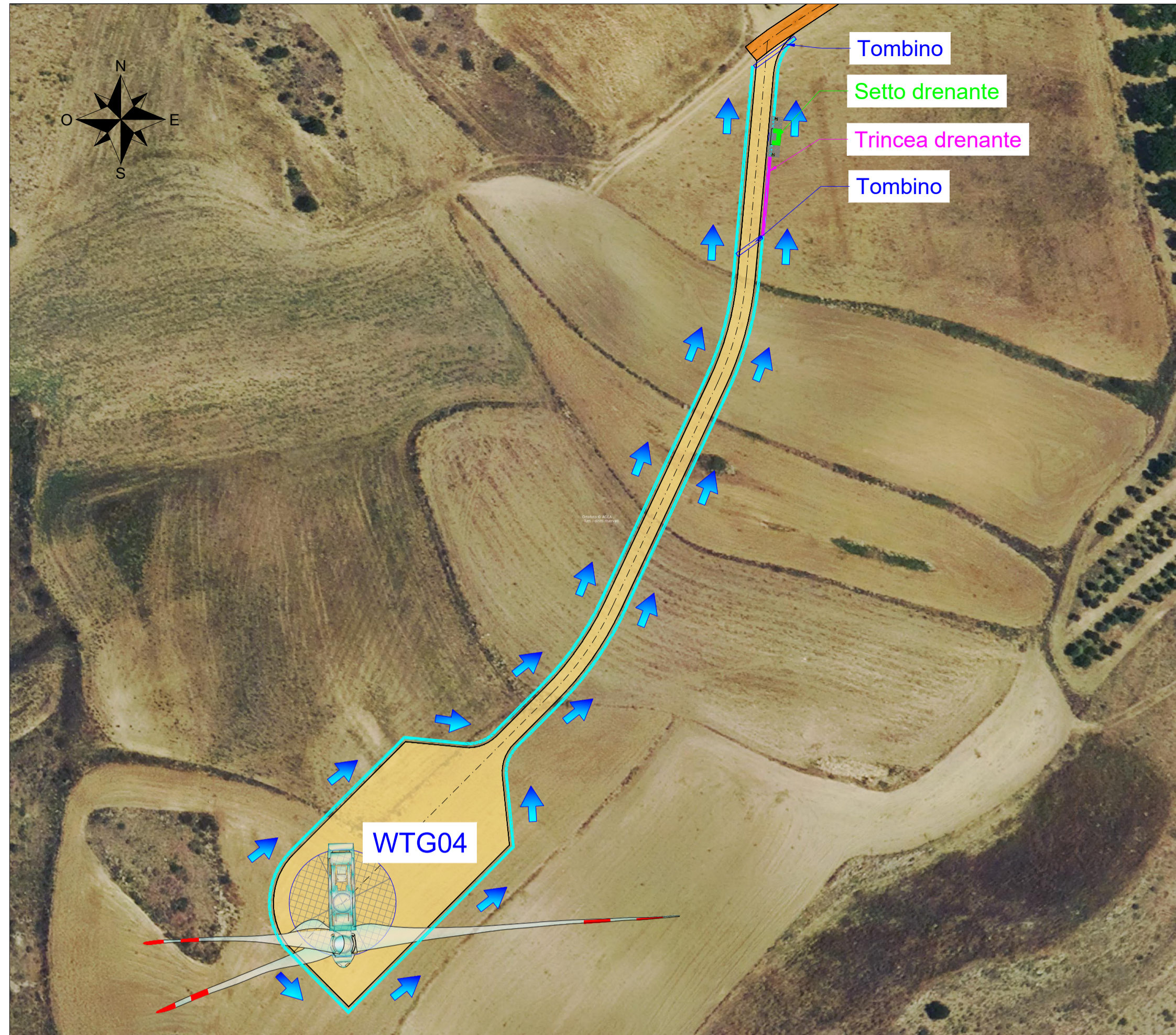
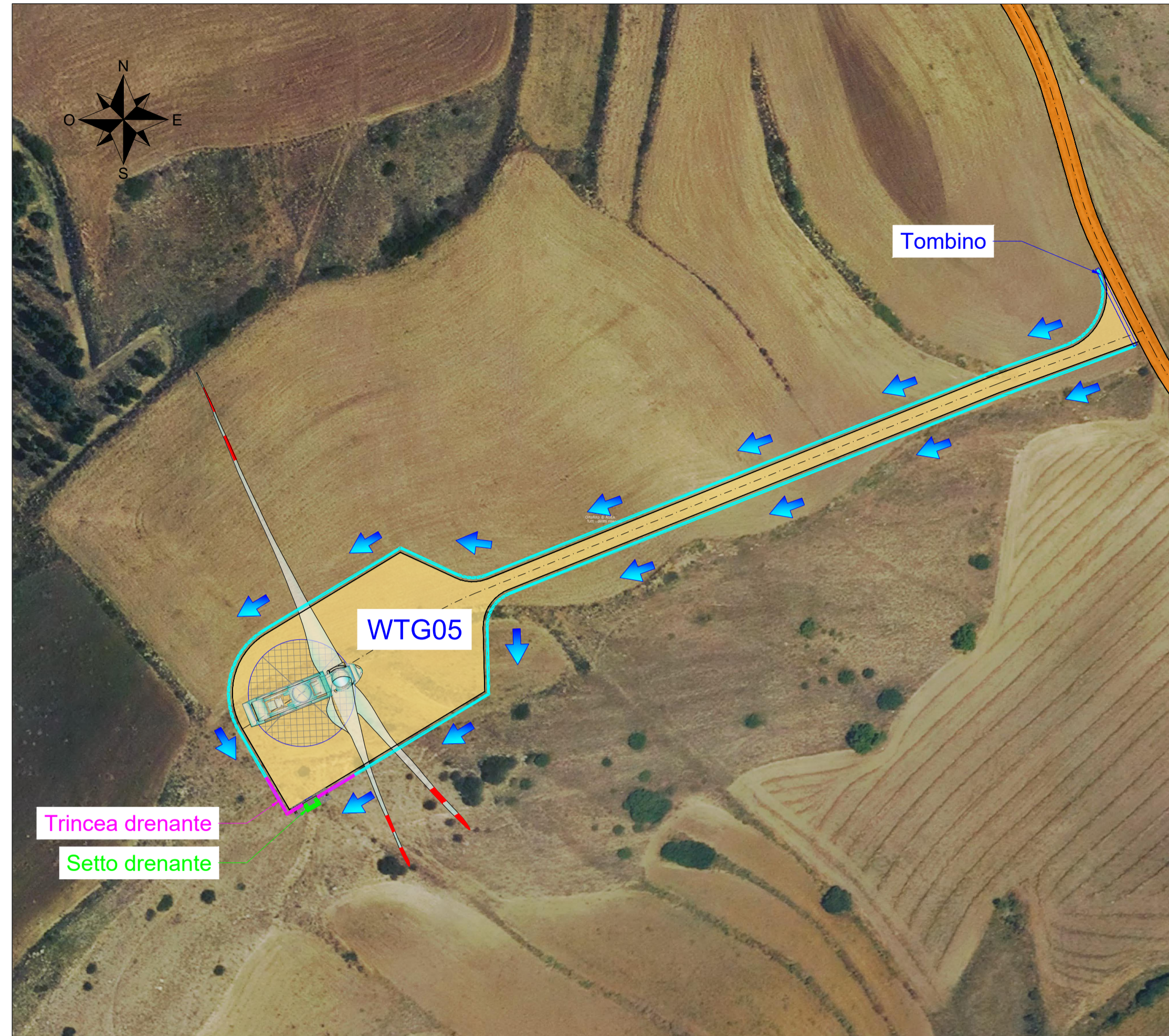


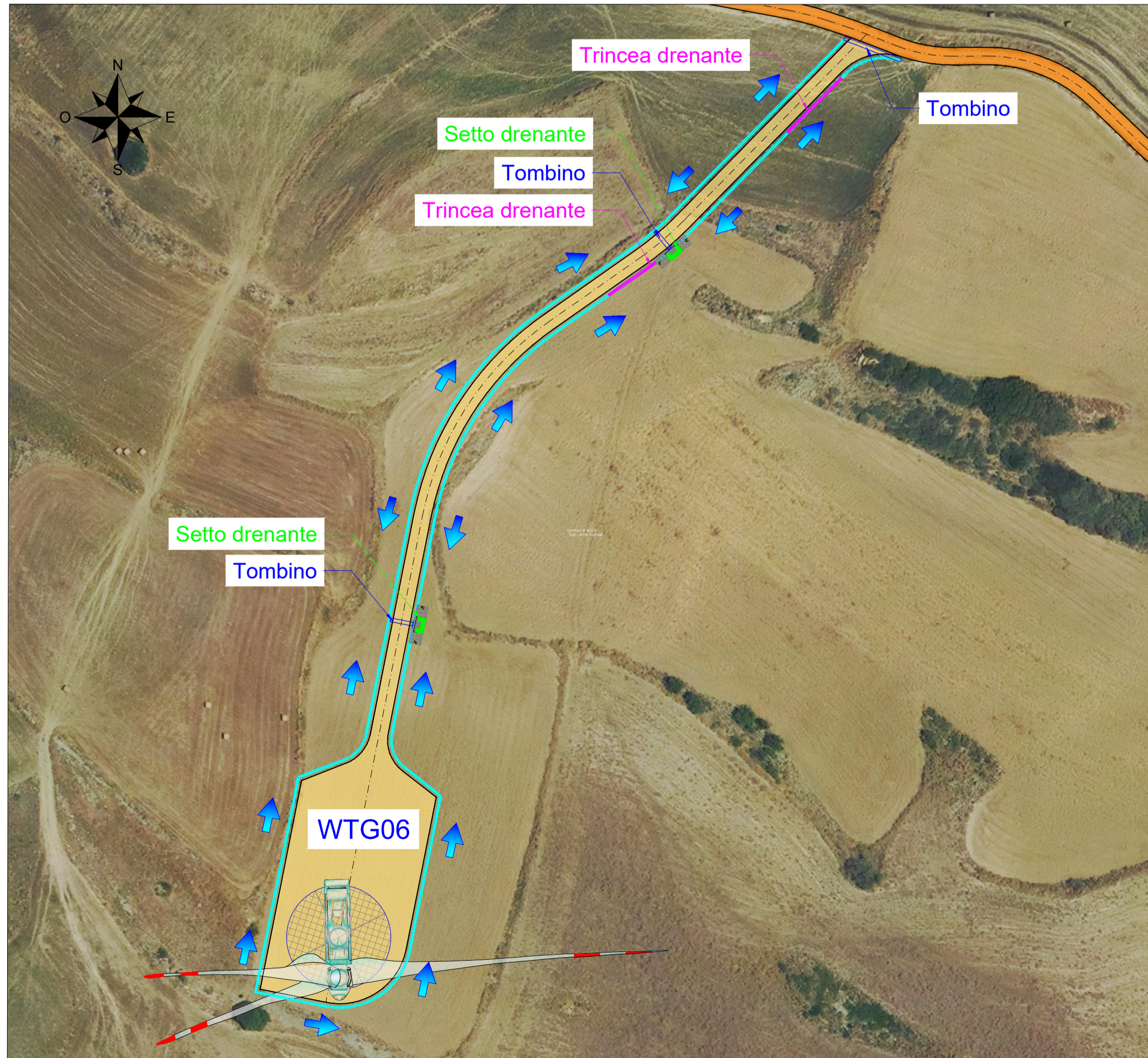
Vista D - Scala 1:1000



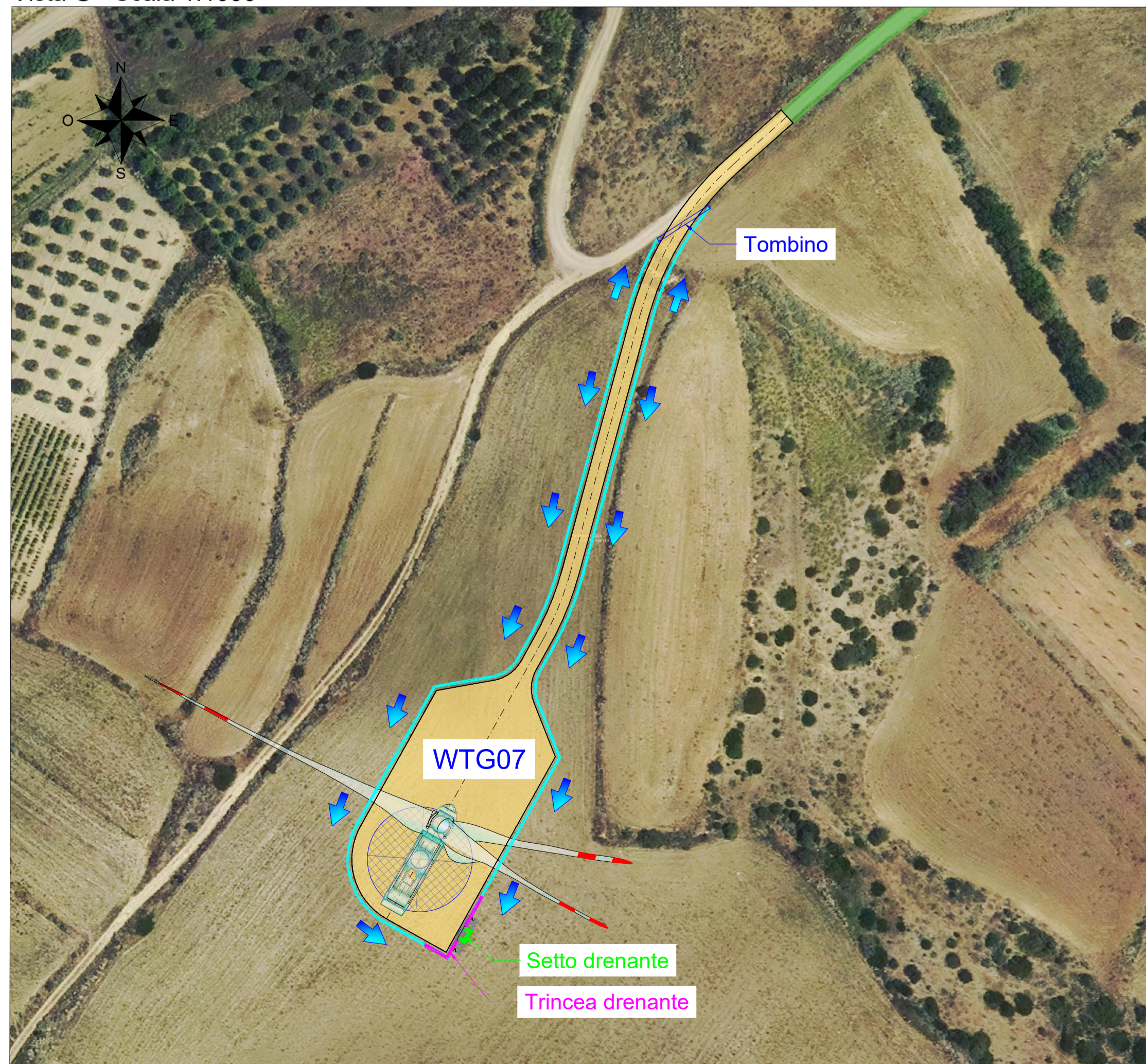
Vista E - Scala 1:1000



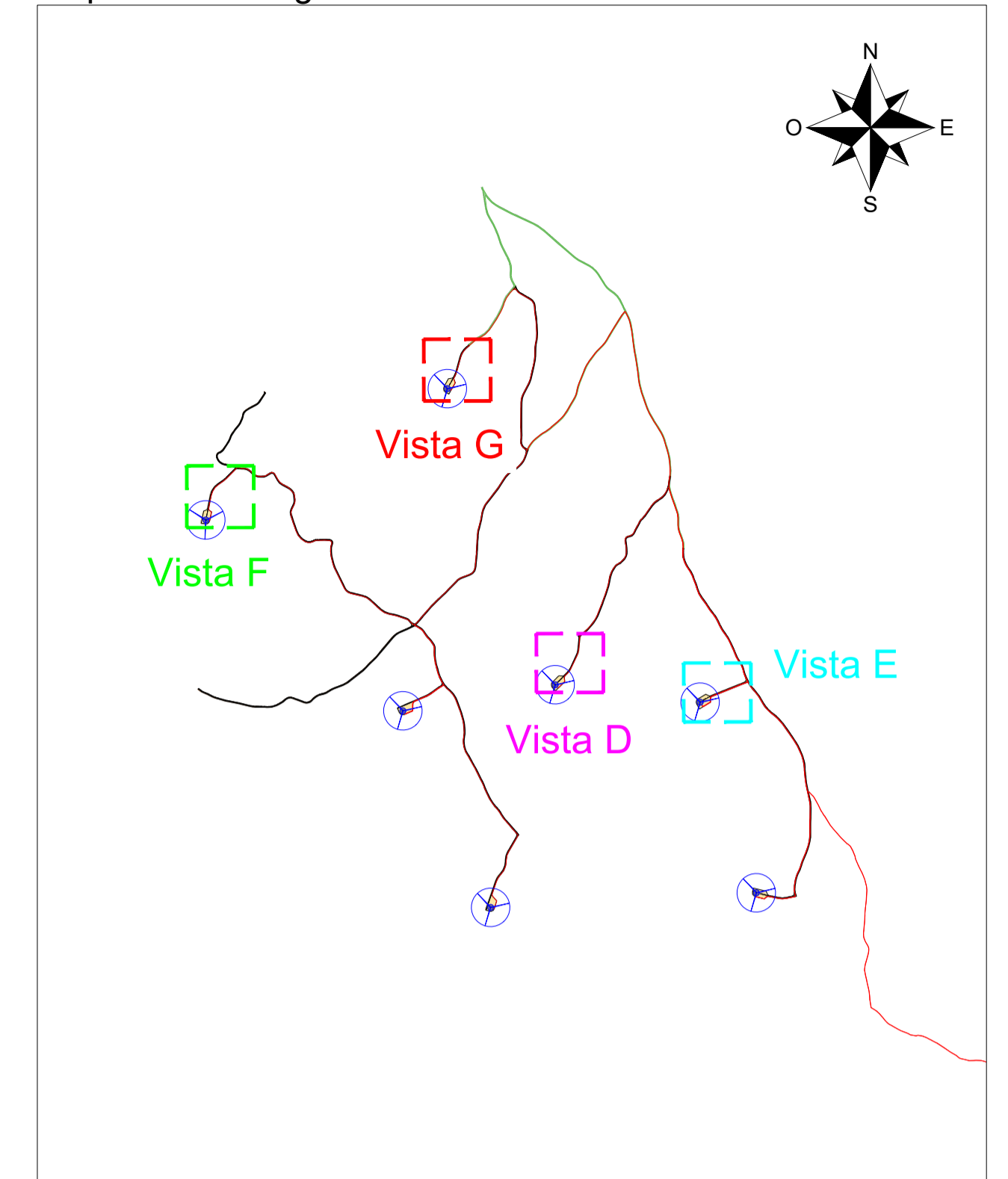
Vista F - Scala 1:1000



Vista G - Scala 1:1000



Inquadramento generale - Scala 1:25000



LEGENDA

- Aerogeneratore
- Strade e piazzole definitive in fase di esercizio - Nuova realizzazione
- Strade esistenti da adeguare
- Strade esistenti
- Limiti carreggiata
- Assi stradali
- Cunetta/Fosso di guardia in terra
- Trincee drenanti
- Setto drenante/monitoraggio ambientale
- Tombini
- Senso di deflusso acque

COMMITTENTE
 ENGIE TREXENTA SRL
 P.Iva: 12367510968
 Via Chiese 72, Milano 20126

STUDIO DI PROGETTAZIONE
 SCM Ingegneria S.r.l.
 Via C. del Croix, 55 - 72022 - Latiano (BR)



0	Apr-23	EMESSO PER ITER AUTORIZZATIVO	CC	DC	PL
REV.	DATE	DESCRIPTION	BY	CHD	APP.
REVISIONS					
Impianto per la produzione di energia elettrica da fonte eolica di potenza pari a 42 MW denominato "Marmilla" Comuni di Villanovafornu, Sardara, Sanluri e Furtui (SU) PROGETTO DEFINITIVO IMPIANTO EOLICO ED OPERE CONNESSE			APPROVED FOR CONSTRUCTION DWG. REV. DATE SIGNATURE ORDER N° SUPPLIER CONTRACT N°		
OBJECT: Tav.21b Planimetria con identificazione deflusso acque e pere idrauliche			SUBPROJECT CODE: THIS DWG. SUPERSEDED BY SCALE THIS DWG. SUPERSEDES 1:1000 FWI DWG N° 1:25000 SHEET OF REV.		
CAD FILE NAME:			A1		

THIS DRAWING IS THE PROPERTY OF ENGIE TREXENTA SRL AND IS LOANED WITH-OUT CONSIDERATION OTHER THAN THE BORROWER'S AGREEMENT THAT IT SHALL NOT BE REPRODUCED COPIED LENT OR DISPOSED OF DIRECTLY OR INDIRECTLY, NOR USED FOR ANY PURPOSE OTHER THAN THAT FOR WHICH IT IS SPECIFICALLY FURNISHED THE APPARATUS SHOWN IN THE DRAWING IS COVERED BY PATENTS.